

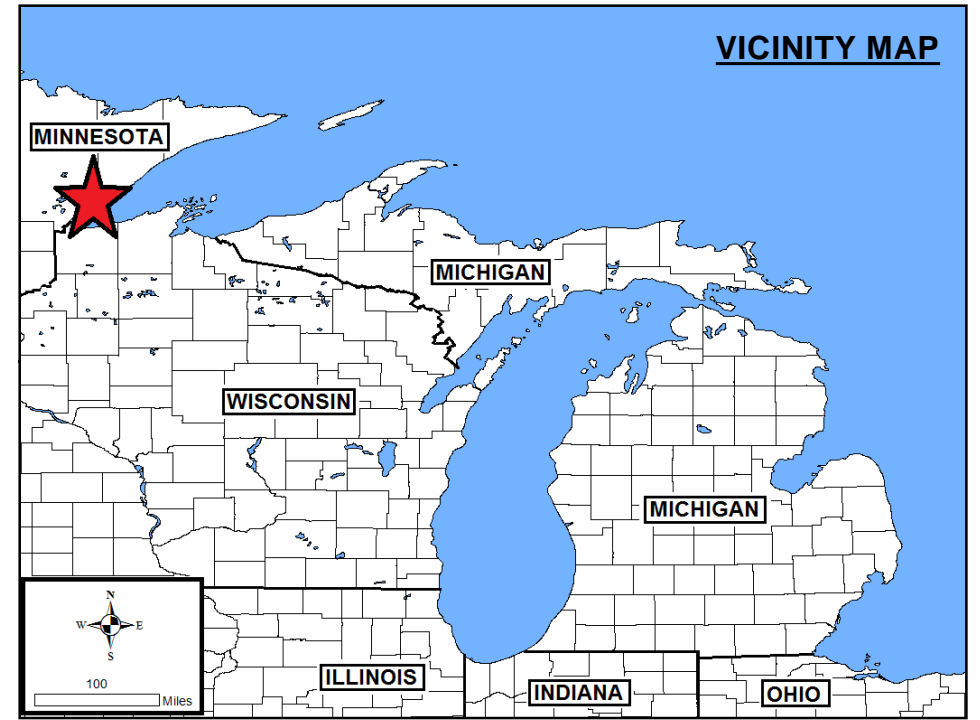
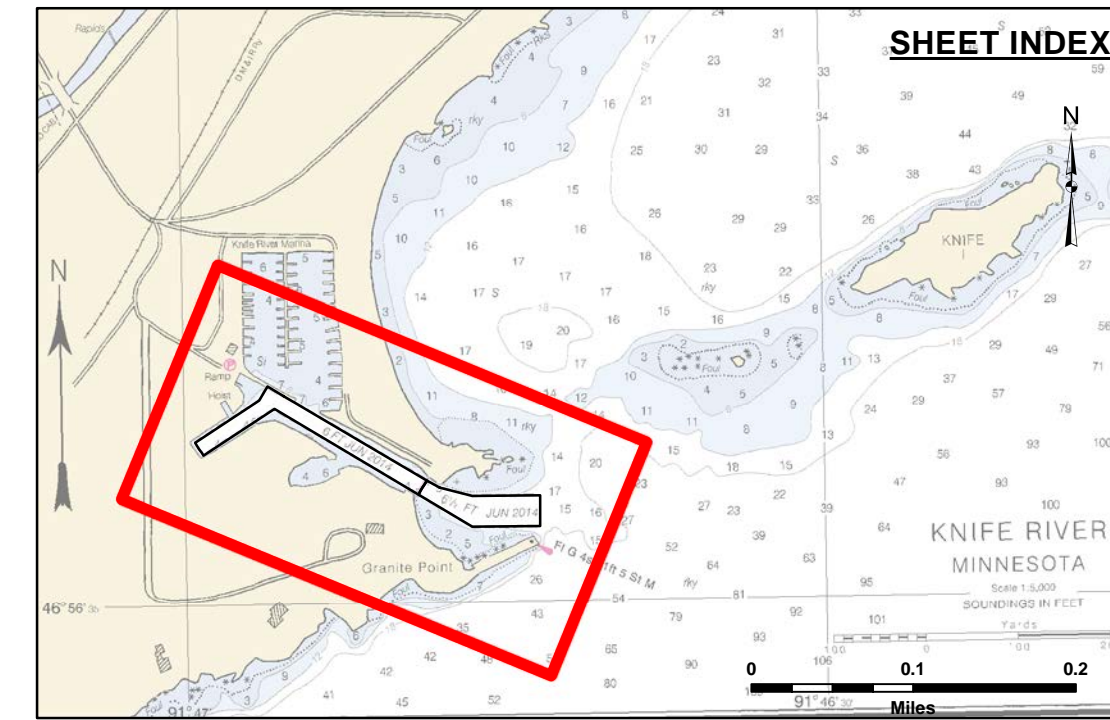
**Disclaimer:** The data represents the results of data collection/processing for a specific US Army Corps of Engineers activity and indicates the general existing conditions. The user is responsible for the results accuracy specifications. The user is responsible for the results of any of the application of the data for other than its intended purpose.

**DISCLAIMER:** The United States Government furnishes these data and the recipient accepts and uses them with the express understanding that the data are not to be used for any purpose other than that for which they were prepared, or implied concerning the accuracy, completeness, reliability, usability or suitability for any particular purpose of the recipient. The United States Government makes no warranty, express or implied, under any liability whatsoever to any person by reason of any use made thereof. These data belong to the Government. Therefore the recipient may not transfer these data to others without also transferring the Disclaimer.

U.S. ARMY CORPS OF ENGINEERS DETROIT DISTRICT		
Submitted:	Surveyed By:	
Recommended:	Plotted By:	
Approved:	Chief, Survey Section	Chief, Technical Services

**KNIFE RIVER, MN**  
**Knife River**  
**KN\_01\_IFE\_20230919\_CS**  
**19 September 2023**

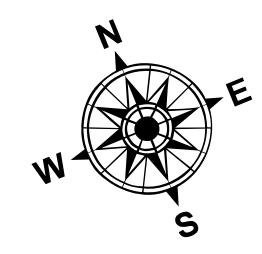
**Sheet Reference Number**  
**1 of 1**



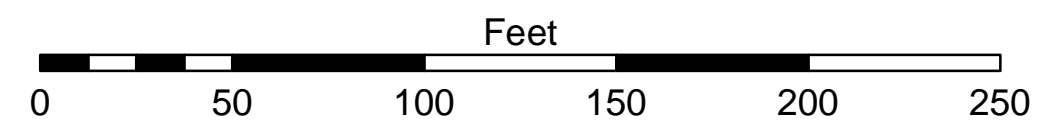
**LEGEND**  
 Contour Lines  
 Channel Limits

**SOUNDING LEGEND**

- LESS THAN PROJECT DEPTH
- PROJECT DEPTH
- PROJECT DEPTH +1'
- PROJECT DEPTH +2'
- PROJECT DEPTH +3'
- PROJECT DEPTH +4'
- PROJECT DEPTH +5'



1 inch = 50 feet



- NOTES:**
- 1) THE INFORMATION DEPICTED ON THIS CHART REPRESENTS THE RESULTS OF SURVEYS MADE ON THE DATE INDICATED AND CAN ONLY BE CONSIDERED AS INDICATING THE GENERAL CONDITIONS PRESENT AT THAT TIME.
  - 2) SOUNDING DEPTHS ARE REFERENCED TO INTERNATIONAL GREAT LAKES DATUM 1985 (IGLD85) LOW WATER DATUM ELEVATION 801.1 FEET ABOVE MEAN WATER LEVEL AT RIMOUSKI, QUEBEC. WATER LEVEL READINGS WERE OBTAINED WITH RTK GPS VALUES. DEPTHS ARE MEASURED USING A TELEDYNE ECHOTRAC E20 PORTABLE SURVEY SOUNDER.
  - 3) HORIZONTAL POSITIONING IS DETERMINED USING THE REAL TIME KINEMATIC (RTK) GLOBAL NAVIGATION SATELLITE SYSTEM (GNSS). CORRECTIONS ARE FROM A BASE STATION LOCATED AT NGS MONUMENT 909 9068 KNIFE, A CHISELED SQUARE ON A ROCK OUTCROP. THE GPS RECEIVERS ARE MANUFACTURED BY TRIMBLE, MODELS SP5751 AND R10.
  - 4) THE GRID COORDINATE SYSTEM IS MINNESOTA STATE PLANE, NORTH ZONE (2201), NORTH AMERICAN DATUM 1983 (NAD83), US SURVEY FOOT.
  - 5) THE PROJECT DEPTHS FOR THIS AREA ARE 8.0' AND 10.0'.