



DISCLAIMER: The United States Government furnishes these data and the recipient accepts and uses them with the express understanding that the data are not intended for any purpose other than that for which they were provided. The recipient may not transfer these data to others without also transferring this Disclaimer.

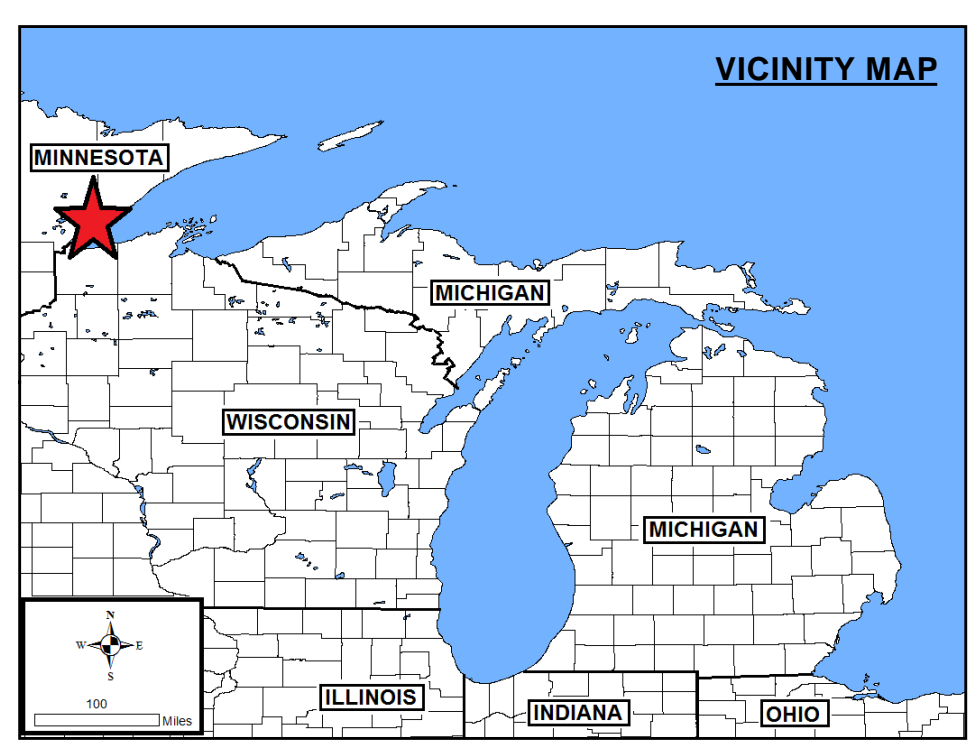
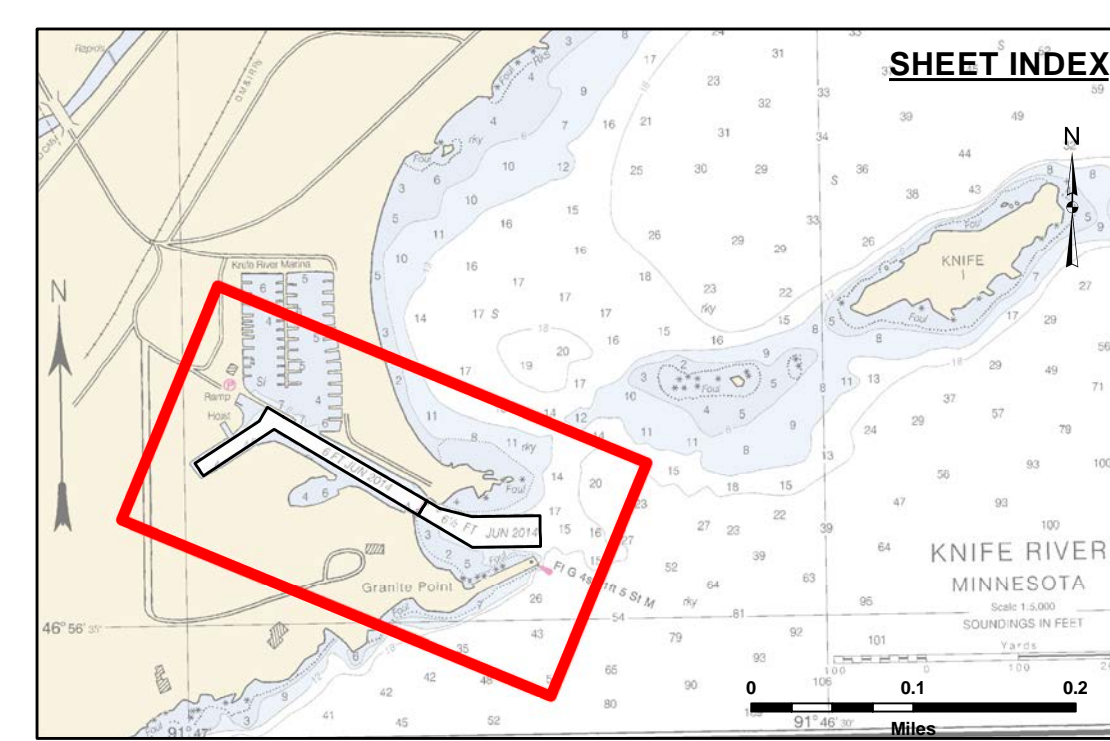
Access Constraints: The United States Government furnishes these data and the recipient accepts and uses them with the express understanding that the data are not intended for any purpose other than that for which they were provided. The recipient may not transfer these data to others without also transferring this Disclaimer.

Intellectual Property: The data represents the results of data collection/processing for a specific US Army Corps of Engineers activity and is not intended for any other purpose. The user is responsible for the results of any of the application of the data for other than its intended purpose.

U.S. ARMY CORPS OF ENGINEERS DETROIT DISTRICT		
Submitted:	Surveyed By:	
Recommended:	Plotted By:	
Approved:	Chief, Survey Section	Chief, Technical Services

KNIFE RIVER, MN
Knife River
KN_01_IFE_20220826_CS
26 August 2022

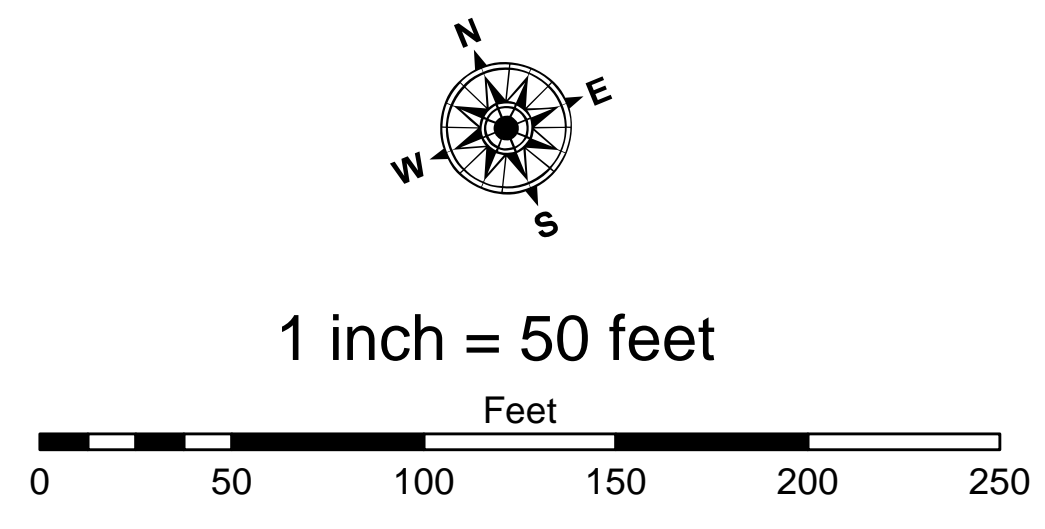
Sheet Reference Number
1 of 1



LEGEND
 Contour Lines
 Channel Limits

SOUNDING LEGEND

- LESS THAN PROJECT DEPTH
- PROJECT DEPTH
- PROJECT DEPTH +1'
- PROJECT DEPTH +2'
- PROJECT DEPTH +3'
- PROJECT DEPTH +4'
- PROJECT DEPTH +5'



- NOTES:**
- 1) THE INFORMATION DEPICTED ON THIS CHART REPRESENTS THE RESULTS OF SURVEYS MADE ON THE DATE INDICATED AND CAN ONLY BE CONSIDERED AS INDICATING THE GENERAL CONDITIONS PRESENT AT THAT TIME.
 - 2) SOUNDING DEPTHS ARE REFERENCED TO INTERNATIONAL GREAT LAKES DATUM 1985 (IGLD85) LOW WATER DATUM ELEVATION 601.1 FEET ABOVE MEAN WATER LEVEL AT RIMOUSKI, QUEBEC. WATER LEVEL READINGS WERE OBTAINED WITH RTK GPS VALUES. DEPTHS ARE MEASURED USING A TELEDYNE ECHOTRAC E20 PORTABLE SURVEY SOUNDER.
 - 3) HORIZONTAL POSITIONING IS DETERMINED USING THE REAL TIME KINEMATIC (RTK) GLOBAL NAVIGATION SATELLITE SYSTEM (GNSS). CORRECTIONS ARE FROM A BASE STATION LOCATED AT NGS MONUMENT 909 9068 KNIFE, A CHISELED SQUARE ON A ROCK OUTCROP. THE GPS RECEIVERS ARE MANUFACTURED BY TRIMBLE, MODELS SP5751 AND R10.
 - 4) THE GRID COORDINATE SYSTEM SHOWN IS REFERENCED TO THE MINNESOTA STATE PLANE COORDINATE SYSTEM, LAMBERT PROJECTION, NORTH ZONE (2201), NORTH AMERICAN DATUM OF 1983 (NAD83), US SURVEY FOOT.
 - 5) THE PROJECT DEPTHS FOR THIS AREA ARE 8.0' AND 10.0'.