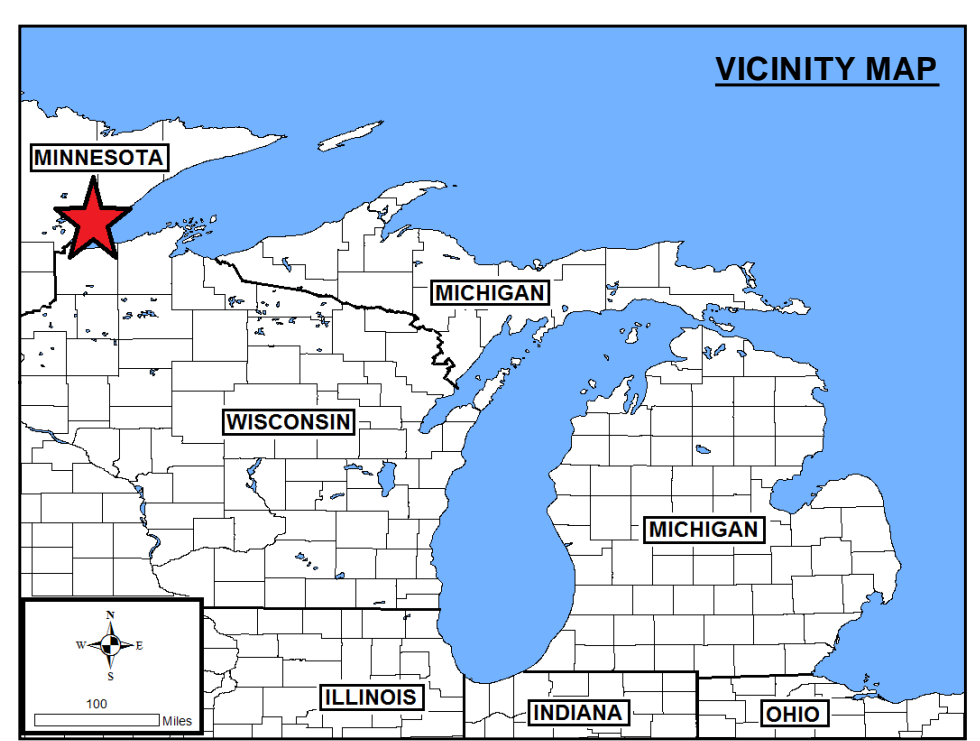
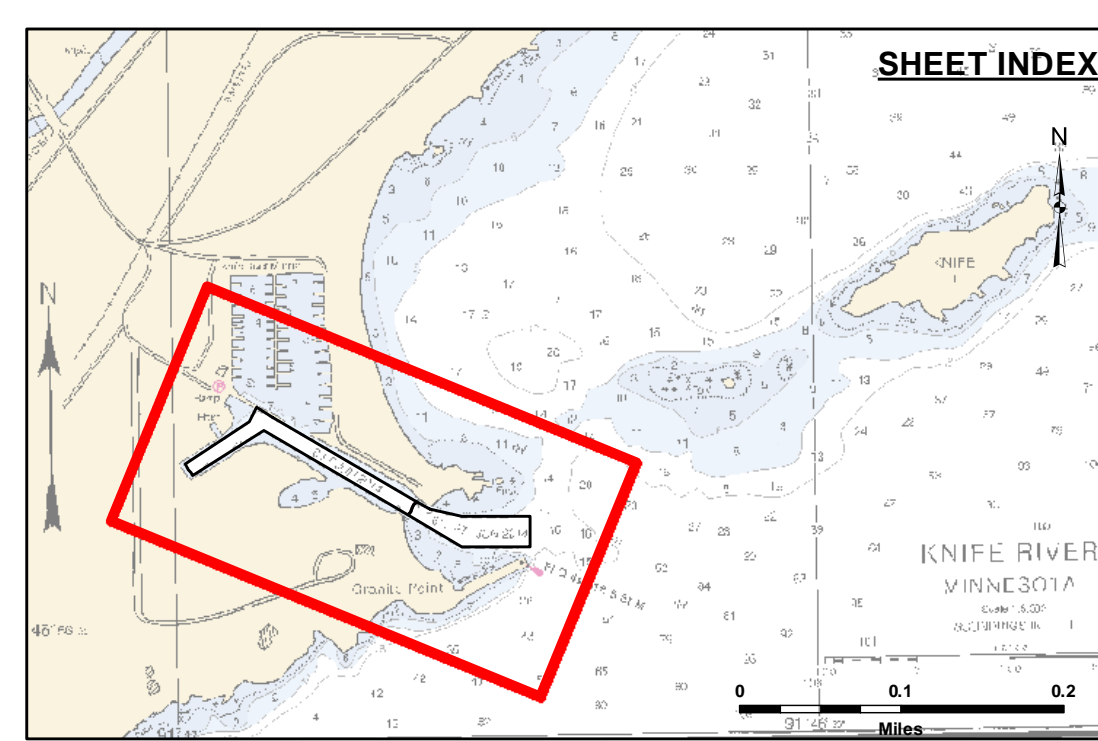


**Disclaimer:** The data represents the results of data collection and processing for a specific US Army Corps of Engineers activity and indicates the general existing conditions. Engineers assume no liability for the accuracy, completeness, or implied warranty of the data for other than its intended purpose. The user is responsible for the accuracy of the data for any application of the data for other than its intended purpose.

**DISCLAIMER:** The United States Government furnishes this data and the recipient accepts and uses them with the express understanding that the data is provided for informational purposes only, and is not intended for use in any legal proceeding, contract, or other legal obligation. The recipient may not transfer, disseminate, or otherwise use this data for purposes other than those intended by the United States Government. The recipient may not transfer these data to others without also transferring this disclaimer.

U.S. ARMY CORPS OF ENGINEERS DETROIT DISTRICT		
Submitted:	Surveyed By:	
Recommended:	Plotted By:	
Approved:	Chief, Survey Section	
	Chief, Technical Services	

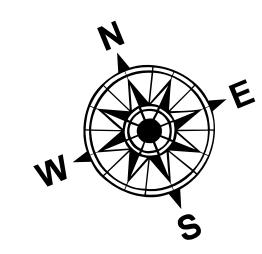
**KNIFE RIVER, MN**  
**Knife River**  
**KN\_01\_IFE\_20210322\_CS**  
**22 March 2021**



**LEGEND**  
 Contour Lines  
 Channel Limits

**SOUNDING LEGEND**

- LESS THAN PROJECT DEPTH
- PROJECT DEPTH
- PROJECT DEPTH +1'
- PROJECT DEPTH +2'
- PROJECT DEPTH +3'
- PROJECT DEPTH +4'
- PROJECT DEPTH +5'



1 inch = 50 feet  
 Feet  
 0 50 100 150 200 250

- NOTES:**
- 1) THE INFORMATION DEPICTED ON THIS CHART REPRESENTS THE RESULTS OF SURVEYS MADE ON THE DATE INDICATED AND CAN ONLY BE CONSIDERED AS INDICATING THE GENERAL CONDITIONS PRESENT AT THAT TIME.
  - 2) SOUNDING DEPTHS ARE REFERENCED TO INTERNATIONAL GREAT LAKES DATUM 1985 (IGLD85) LOW WATER DATUM ELEVATION 601.1 FEET ABOVE MEAN WATER LEVEL AT RIMOUSKI, QUEBEC. WATER LEVEL READINGS WERE OBTAINED WITH RTK GPS VALUES. DEPTHS ARE MEASURED USING A TELEDYNE ECHOTRAC E20 PORTABLE SURVEY SOUNDER.
  - 3) HORIZONTAL POSITIONING IS DETERMINED USING THE REAL TIME KINEMATIC (RTK) GLOBAL NAVIGATION SATELLITE SYSTEM (GNSS). CORRECTIONS ARE FROM A BASE STATION LOCATED AT NGS MONUMENT 909 9068 KNIFE, A CHISELED SQUARE ON A ROCK OUTCROP. THE GPS RECEIVERS ARE MANUFACTURED BY TRIMBLE, MODELS SP751 AND R10.
  - 4) THE GRID COORDINATE SYSTEM SHOWN IS REFERENCED TO THE MINNESOTA STATE PLANE COORDINATE SYSTEM, LAMBERT PROJECTION, NORTH ZONE (2201), NORTH AMERICAN DATUM OF 1983 (NAD83), US SURVEY FOOT.
  - 5) THE PROJECT DEPTHS FOR THIS AREA ARE 8.0' AND 10.0'.

**Sheet Reference Number**  
**1 of 1**