

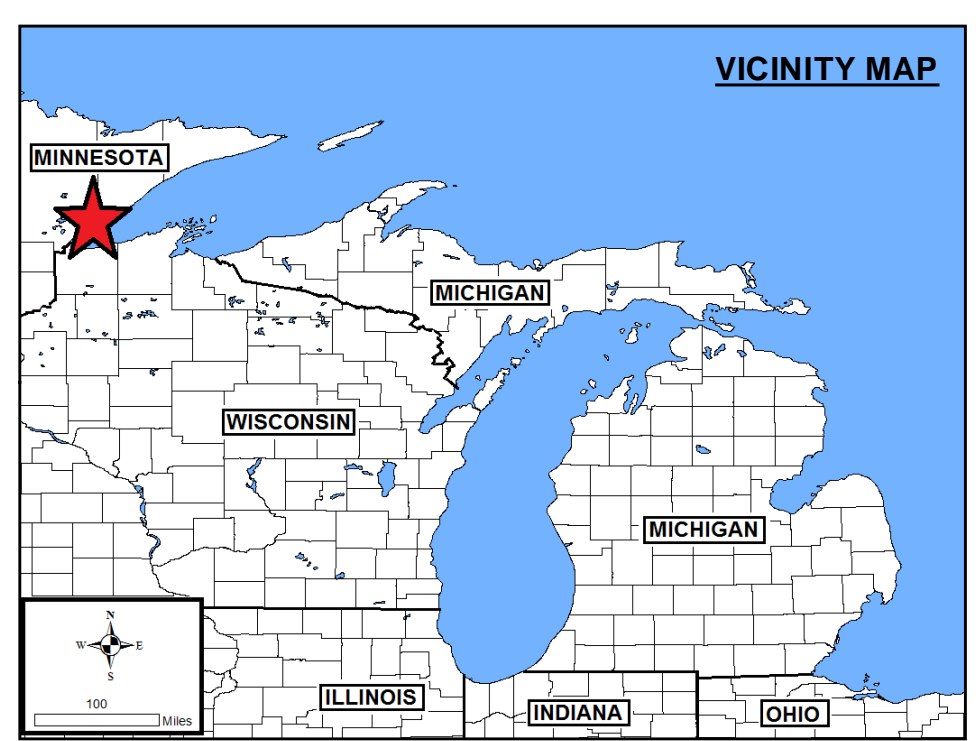
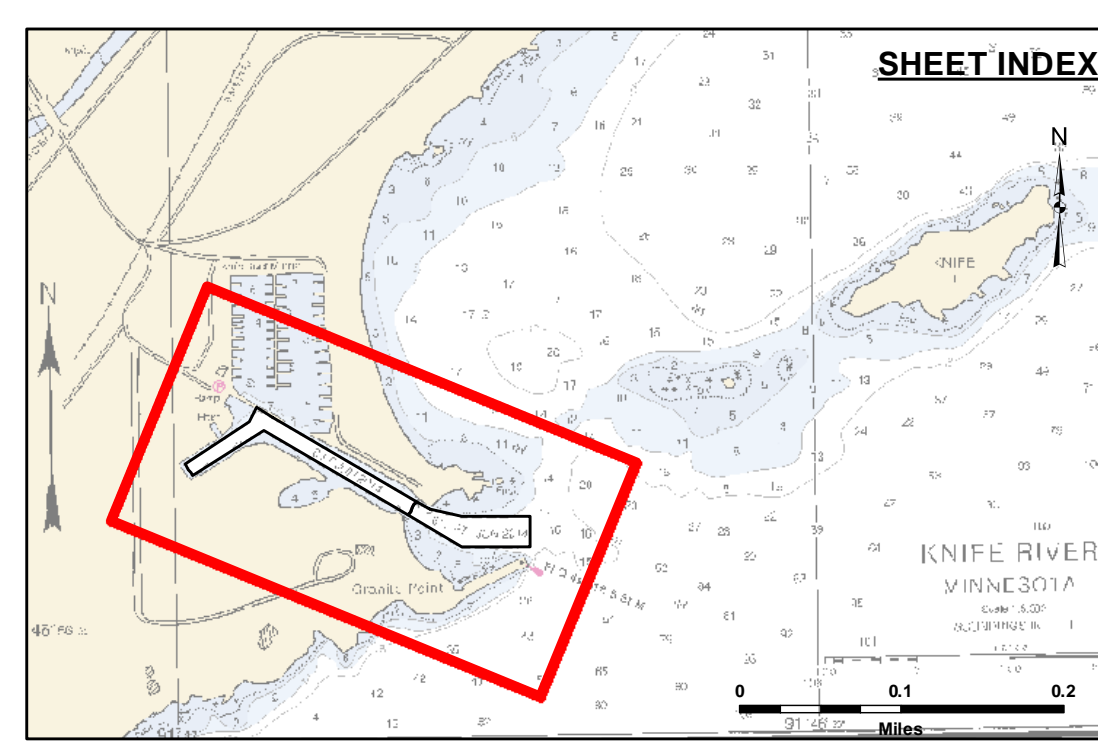
Disclaimer: The data represents the results of data collection and processing for a specific US Army Corps of Engineers activity and indicates the general existing conditions. The user is responsible for the accuracy, completeness, and reliability of the data for other than its intended purpose. The user is responsible for the accuracy, completeness, and reliability of the data for other than its intended purpose.

DISCLAIMER: The United States Government furnishes this data and the recipient accepts and uses them with the express understanding that the data is provided for informational purposes only. The data is not intended for use in any legal proceeding, contract, or other legal obligation. The recipient is responsible for the accuracy, completeness, and reliability of the data for other than its intended purpose. The data is not intended for use in any legal proceeding, contract, or other legal obligation. The recipient is responsible for the accuracy, completeness, and reliability of the data for other than its intended purpose.

U.S. ARMY CORPS OF ENGINEERS DETROIT DISTRICT		
Submitted:	Surveyed By:	
Recommended:	Plotted By:	
Approved:	Chief, Survey Section	Chief, Technical Services

KNIFE RIVER, MN
Knife River
KN_01_IFE_20201005_CS
05 October 2020

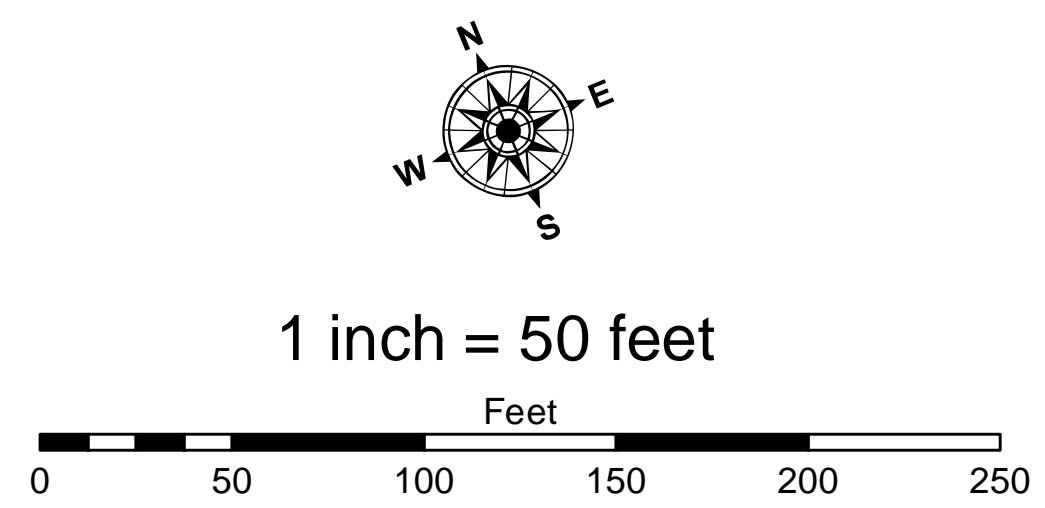
Sheet Reference Number
1 of 1



LEGEND
 Contour Lines
 Channel Limits

SOUNDING LEGEND

- LESS THAN PROJECT DEPTH
- PROJECT DEPTH
- PROJECT DEPTH +1'
- PROJECT DEPTH +2'
- PROJECT DEPTH +3'
- PROJECT DEPTH +4'
- PROJECT DEPTH +5'



- NOTES:**
- 1) THE INFORMATION DEPICTED ON THIS CHART REPRESENTS THE RESULTS OF SURVEYS MADE ON THE DATE INDICATED AND CAN ONLY BE CONSIDERED AS INDICATING THE GENERAL CONDITIONS PRESENT AT THAT TIME.
 - 2) SOUNDING DEPTHS ARE REFERENCED TO INTERNATIONAL GREAT LAKES DATUM 1985 (IGLD85) LOW WATER DATUM ELEVATION 601.1 FEET ABOVE MEAN WATER LEVEL AT RIMOUSKI QUEBEC. WATER LEVEL READINGS WERE OBTAINED WITH RTK GPS VALUES. DEPTHS ARE MEASURED USING A ROSS LABS 825B PORTABLE SURVEY SOUNDER.
 - 3) HORIZONTAL POSITIONING IS DETERMINED USING THE REAL TIME KINEMATIC (RTK) GLOBAL NAVIGATION SATELLITE SYSTEM (GNSS). CORRECTIONS ARE FROM A BASE STATION LOCATED AT NGS MONUMENT 989 9068 KNIFE, A CHISELED SQUARE ON A ROCK OUTCROP. THE GPS RECEIVERS ARE MANUFACTURED BY TRIMBLE, MODELS SPA751 AND R10.
 - 4) THE GRID COORDINATE SYSTEM SHOWN IS REFERENCED TO THE MINNESOTA STATE PLANE COORDINATE SYSTEM, LAMBERT REJECTION, NORTH ZONE (2201), NORTH AMERICAN DATUM OF 1983 (NAD83), US SURVEY FOOT.
 - 5) THE PROJECT DEPTHS FOR THIS AREA ARE 8.0' AND 10.0'.