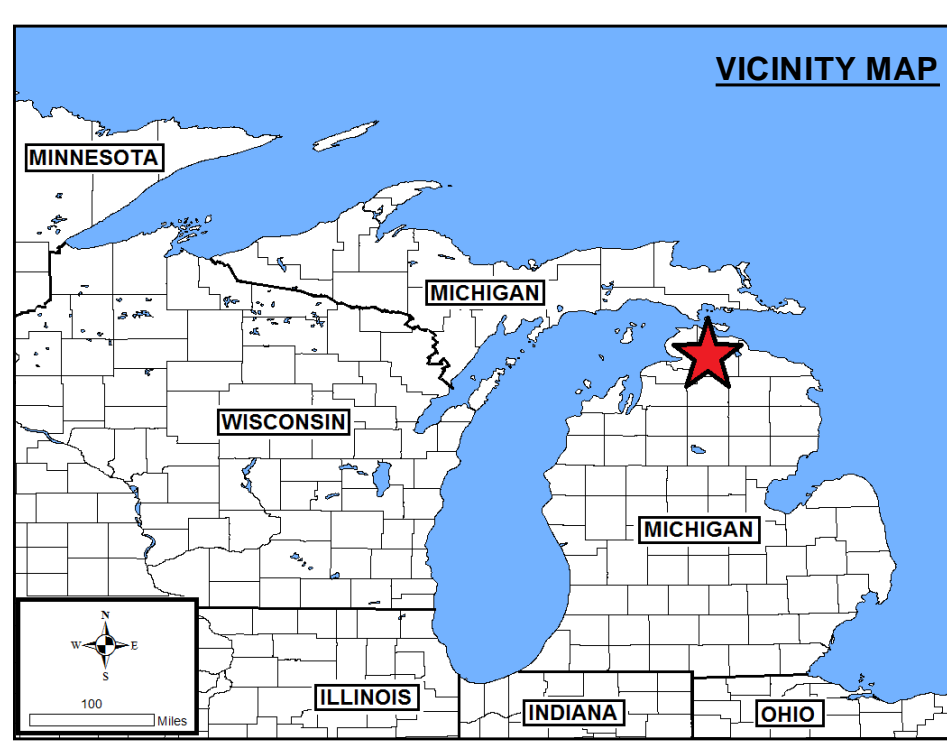
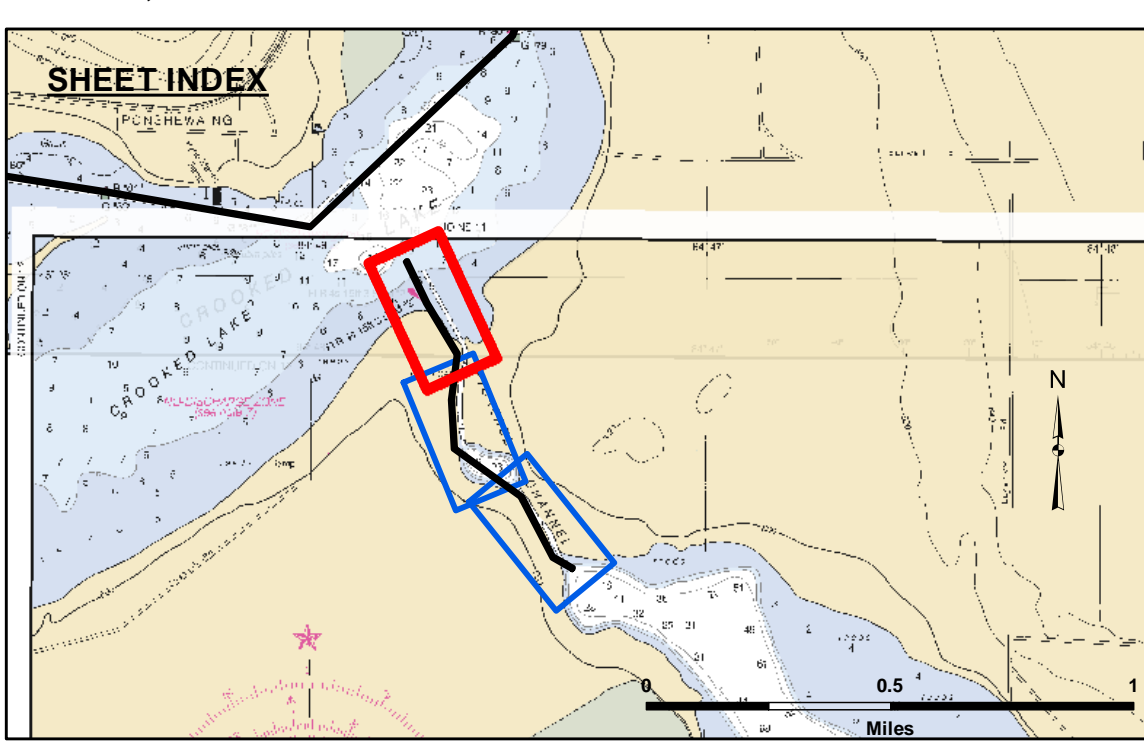


Disclaimer: The data represents the results of data collection and processing for a specific US Army Corps of Engineers activity and indicates the general existing conditions. Engineers assume no liability for the accuracy, completeness, reliability, usability, or suitability for any particular purpose of the data. The user is responsible for the accuracy, completeness, reliability, usability, or suitability for any particular purpose of the data. These data are provided for informational purposes only and are not intended for use in any other manner. These data are provided for informational purposes only and are not intended for use in any other manner. These data are provided for informational purposes only and are not intended for use in any other manner.

| | | |
|--|---------------------------|--|
| U.S. ARMY CORPS OF ENGINEERS DETROIT DISTRICT | | |
| Submitted: | Surveyed By: | |
| Recommended: | Plotted By: | |
| Approved: | Chief, Technical Services | |

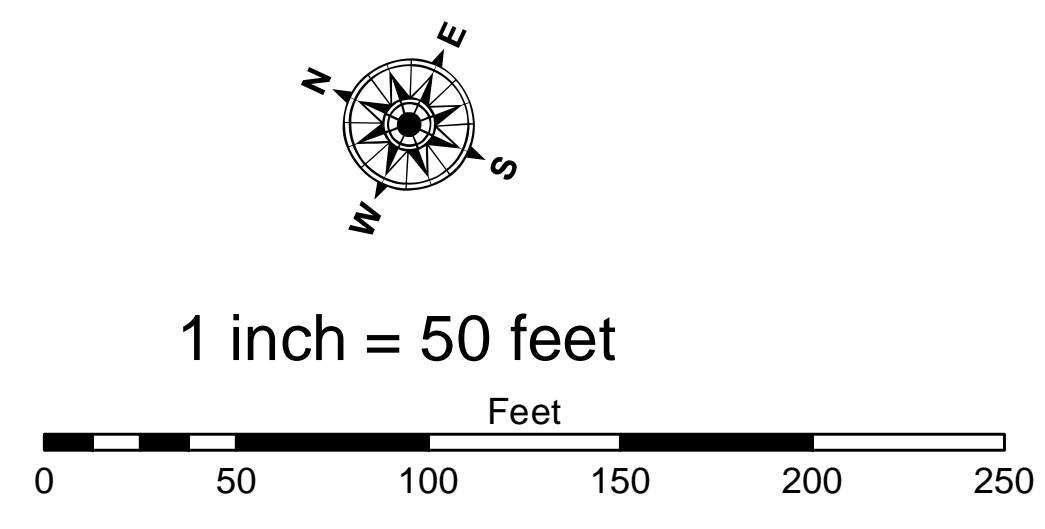
**Inland Route, MI
Pickerel Channel
IR_01_PCK_20210928_CS
28 September 2021**

**Sheet Reference Number
1 of 3**



- LEGEND**
- Cable Submarine
 - - - Cable Overhead
 - ▭ Channel_Limits
 - ⊥ Beacon, General
 - Contour Lines
 - ▭ Channel_Limits

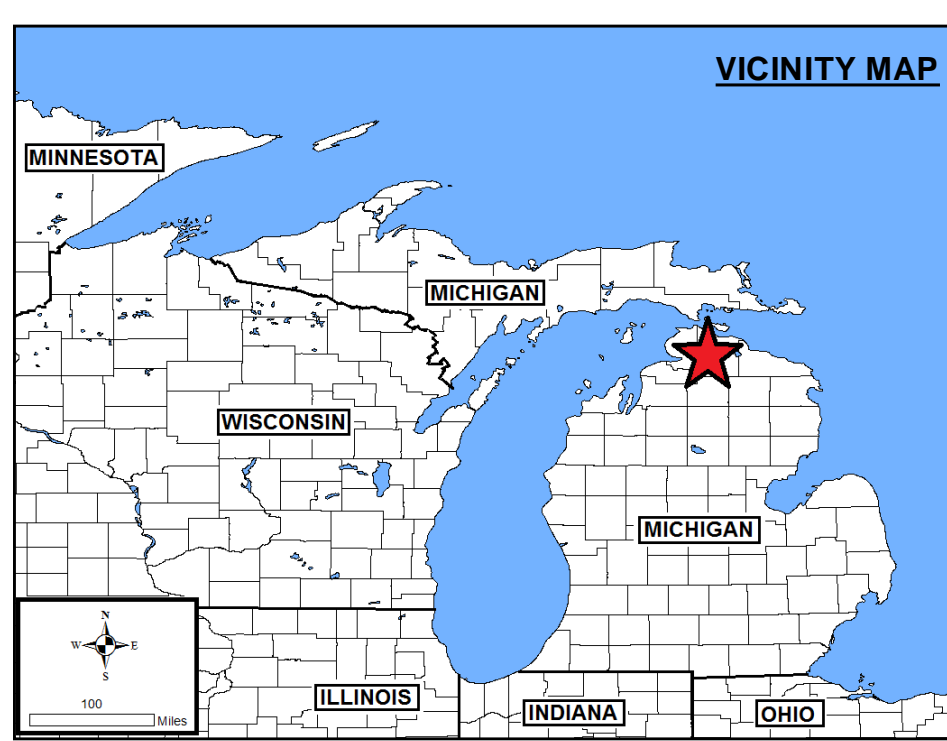
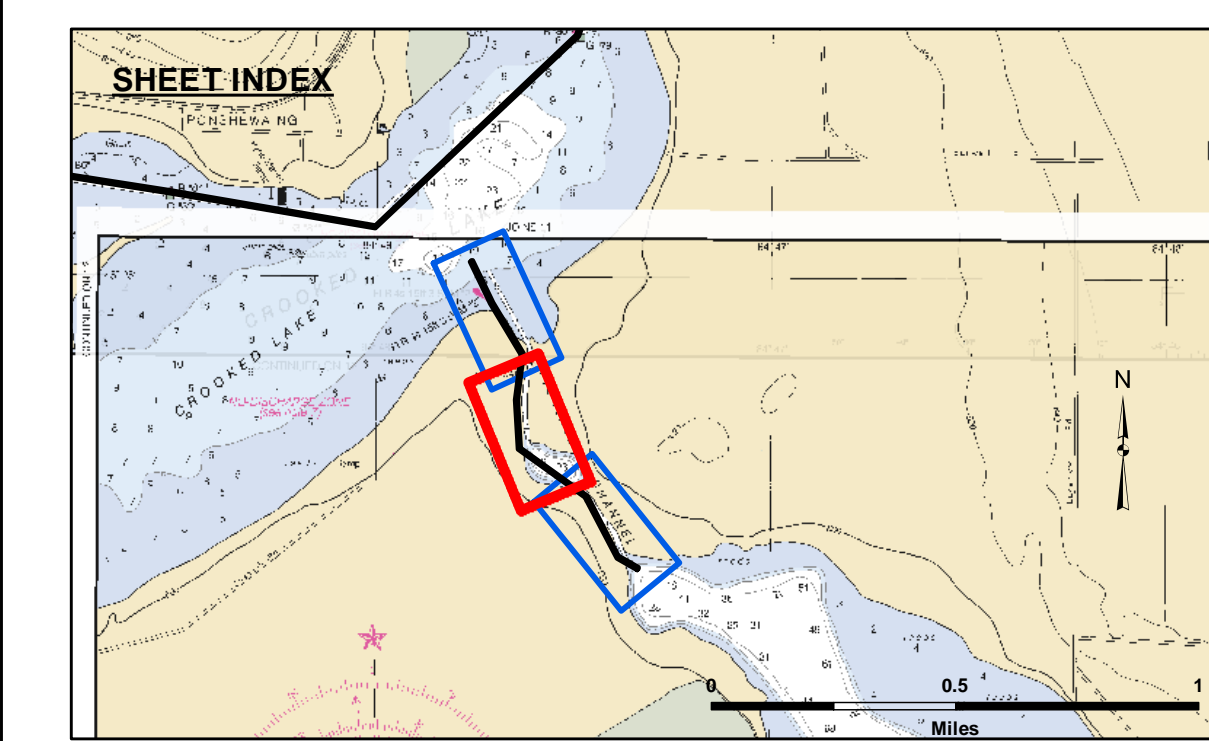
- SOUNDING LEGEND**
- LESS THAN PROJECT DEPTH
 - PROJECT DEPTH
 - PROJECT DEPTH +1'
 - PROJECT DEPTH +2'
 - PROJECT DEPTH +3'
 - PROJECT DEPTH +4'
 - PROJECT DEPTH +5'



NOTES:

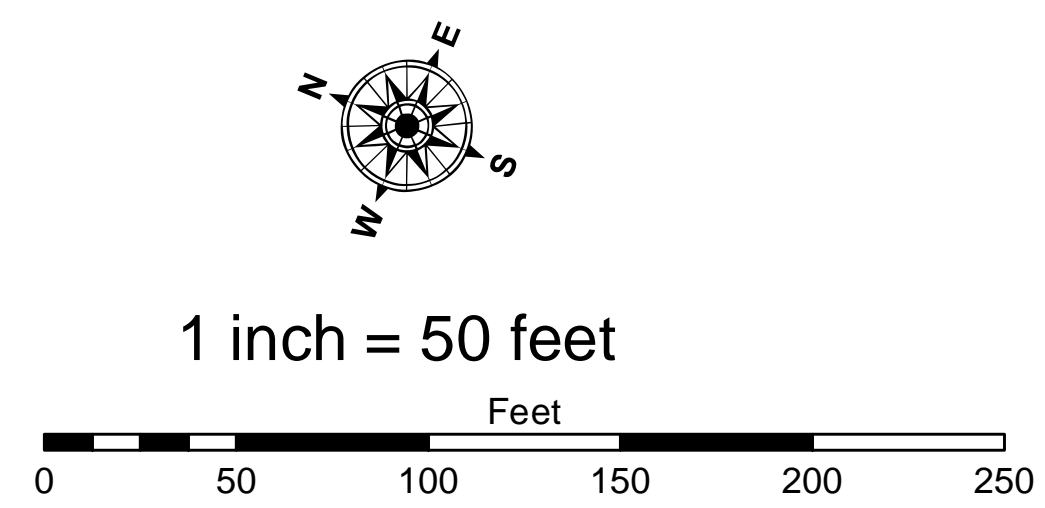
1. THE SOUNDINGS INDICATED HEREIN ARE GENERALIZED DEPTHS AND ARE NOT REPRESENTATIVE OF THE FULL DATASET.
2. ELEVATIONS AND SOUNDING DEPTHS ARE REFERRED TO INTERNATIONAL GREAT LAKES DATUM 1985 (IGLD 85). LOW WATER DATUM (LWD) ZERO IS THE MEAN WATER LEVEL AT FATHER POINT QUEBEC. WATER LEVEL READINGS ARE FROM RTK GPS COLLECTED THROUGHOUT THE RIVERS.
3. THE INFORMATION DEPICTED ON THIS MAP REPRESENTS THE RESULTS OF SURVEYS MADE ON DATES INDICATED AND CAN ONLY BE CONSIDERED AS INDICATING THE GENERAL CONDITIONS PRESENT AT THE TIME.
4. HORIZONTAL POSITIONING IS DETERMINED BY APPLANIX POS MV4 W/RTK OR MARINESTAR G2+.
5. GRID COORDINATES ARE BASED ON THE MICHIGAN STATE PLANE COORDINATE SYSTEM, LAMBERT PROJECTION, MICHIGAN CENTRAL ZONE (2112). NORTH AMERICAN DATUM (NAD83). ALL COORDINATES SHOWN ARE IN U.S. SURVEY FEET.
6. UNLESS OTHERWISE NOTED PROJECT DEPTHS ARE 5.0 FEET BELOW LWD

2012 AERIAL PHOTOGRAPHY DATA SOURCE: NAIP



- LEGEND**
- Cable Submarine
 - - - Cable Overhead
 - ▭ Channel_Limits
 - ⊥ Beacon, General
 - Contour Lines
 - ▭ Channel_Limits

- SOUNDING LEGEND**
- LESS THAN PROJECT DEPTH
 - PROJECT DEPTH
 - PROJECT DEPTH +1'
 - PROJECT DEPTH +2'
 - PROJECT DEPTH +3'
 - PROJECT DEPTH +4'
 - PROJECT DEPTH +5'



NOTES:

1. THE SOUNDINGS INDICATED HEREIN ARE GENERALIZED DEPTHS AND ARE NOT REPRESENTATIVE OF THE FULL DATASET.
2. ELEVATIONS AND SOUNDING DEPTHS ARE REFERRED TO INTERNATIONAL GREAT LAKES DATUM 1985 (IGLD 85). LOW WATER DATUM (LWD) ZERO IS THE MEAN WATER LEVEL AT FATHER POINT QUEBEC. WATER LEVEL READINGS ARE FROM RTK GPS COLLECTED THROUGHOUT THE RIVERS.
3. THE INFORMATION DEPICTED ON THIS MAP REPRESENTS THE RESULTS OF SURVEYS MADE ON DATES INDICATED AND CAN ONLY BE CONSIDERED AS INDICATING THE GENERAL CONDITIONS PRESENT AT THE TIME.
4. HORIZONTAL POSITIONING IS DETERMINED BY APPLANIX POS MV4 W/VR5-RTK OR MARINESTAR G2+.
5. GRID COORDINATES ARE BASED ON THE MICHIGAN STATE PLANE COORDINATE SYSTEM, LAMBERT PROJECTION, MICHIGAN CENTRAL ZONE (2112). NORTH AMERICAN DATUM (NAD83). ALL COORDINATES SHOWN ARE IN U.S. SURVEY FEET.
6. UNLESS OTHERWISE NOTED PROJECT DEPTHS ARE 5.0 FEET BELOW LWD

2012 AERIAL PHOTOGRAPHY DATA SOURCE: NAIP



DISCLAIMER: The data represents the results of data collection/processing for a specific US Army Corps of Engineers activity and indicates the general existing conditions. Engineers assume no liability for the accuracy, completeness, or implied warranty of the data for other than its intended purpose. The user is responsible for the accuracy of any of the application of the data for other than its intended purpose.

ACCESS CONSTRAINTS: The United States Government furnishes these data and the recipient accepts and uses them with the express understanding that the data are not to be used for any purpose other than that for which they were provided. The recipient may not transfer these data to others without also transferring this disclaimer.

| | | |
|--|---------------------------|--|
| U.S. ARMY CORPS OF ENGINEERS DETROIT DISTRICT | | |
| Submitted: | Surveyed By: | |
| Recommended: | Plotted By: | |
| Approved: | Chief, Technical Services | |

**Inland Route, MI
Pickerel Channel
IR_01_PCK_20210928_CS
28 September 2021**

**Sheet Reference Number
2 of 3**



Disclaimer: The data represents the results of data collection and processing for a specific US Army Corps of Engineers activity and indicates the general existing conditions. The user is responsible for the accuracy, completeness, and reliability of the data for other than its intended purpose.

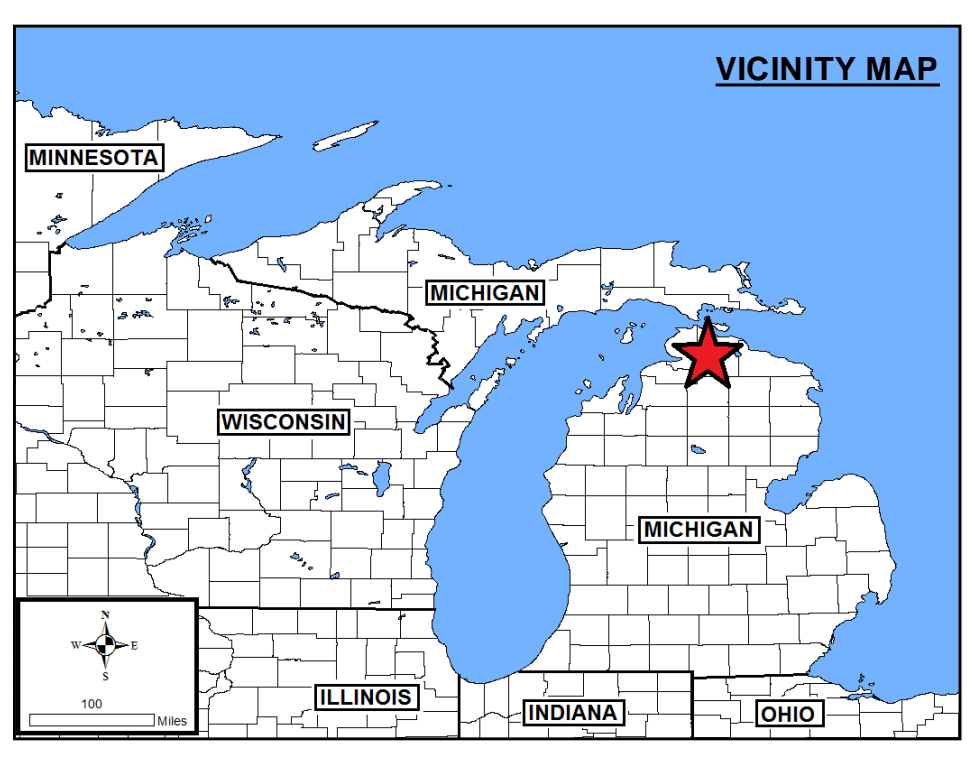
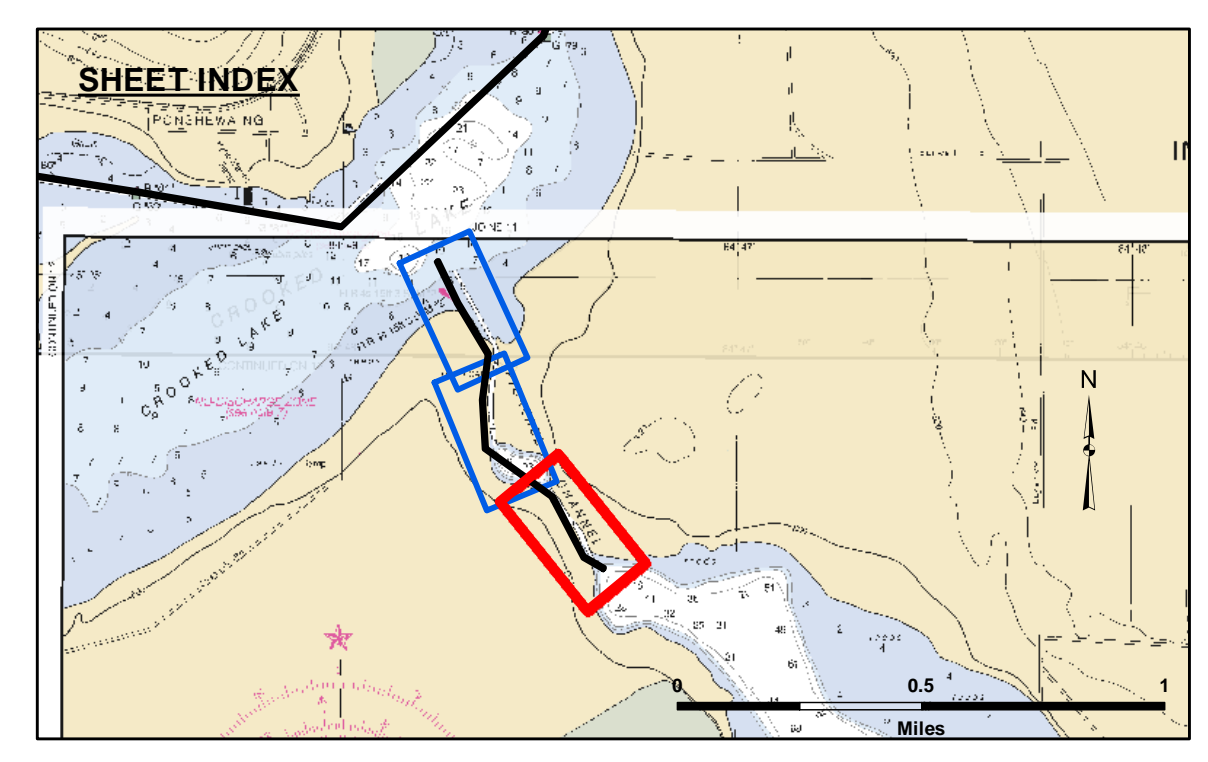
Access Constraints: The United States Government furnishes these data and the recipient accepts and uses them with the express understanding that the data are not to be used for any purpose other than that for which they were collected, and that the data are not to be used for any purpose other than that for which they were collected.

Accuracy: The data are not to be used for any purpose other than that for which they were collected.

Disclaimer: The data are not to be used for any purpose other than that for which they were collected.

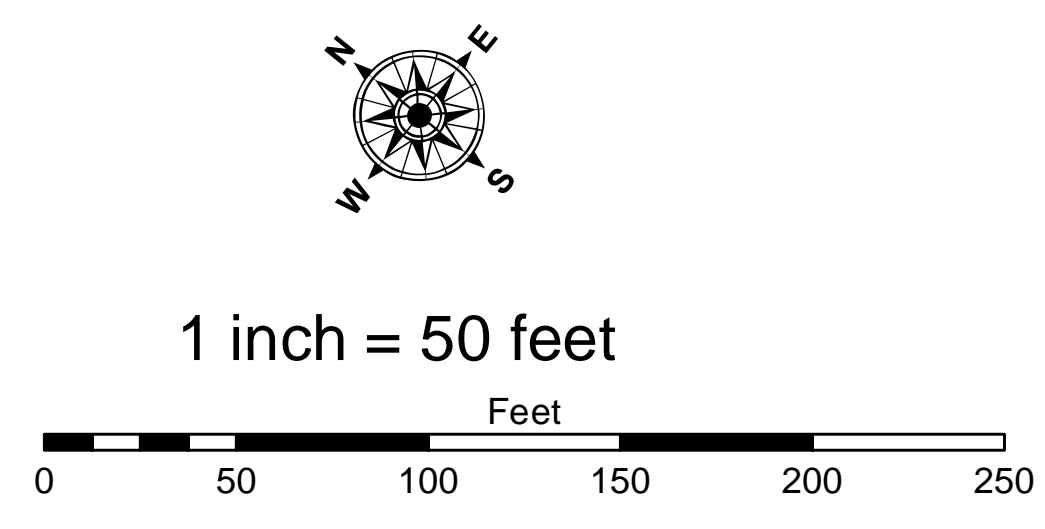
| | | |
|--|--------------|--|
| U.S. ARMY CORPS OF ENGINEERS DETROIT DISTRICT | | |
| Submitted By: | Surveyed By: | |
| Recommended By: Chief, Survey Section | Plotted By: | |
| Approved: | Checked By: | |

**Inland Route, MI
Pickerel Channel
IR_01_PCK_20210928_CS
28 September 2021**



- LEGEND**
- Cable Submarine
 - - - Cable Overhead
 - ▭ Channel Limits
 - ⊥ Beacon, General
 - Contour Lines
 - ▭ Channel Limits

- SOUNDING LEGEND**
- LESS THAN PROJECT DEPTH
 - PROJECT DEPTH
 - PROJECT DEPTH +1'
 - PROJECT DEPTH +2'
 - PROJECT DEPTH +3'
 - PROJECT DEPTH +4'
 - PROJECT DEPTH +5'



NOTES:

1. THE SOUNDINGS INDICATED HEREIN ARE GENERALIZED DEPTHS AND ARE NOT REPRESENTATIVE OF THE FULL DATASET.
2. ELEVATIONS AND SOUNDING DEPTHS ARE REFERRED TO INTERNATIONAL GREAT LAKES DATUM 1985 (IGLD 85). LOW WATER DATUM (LWD) ZERO IS THE MEAN WATER LEVEL AT FATHER POINT QUEBEC. WATER LEVEL READINGS ARE FROM RTK GPS COLLECTED THROUGHOUT THE RIVERS.
3. THE INFORMATION DEPICTED ON THIS MAP REPRESENTS THE RESULTS OF SURVEYS MADE ON DATES INDICATED AND CAN ONLY BE CONSIDERED AS INDICATING THE GENERAL CONDITIONS PRESENT AT THE TIME.
4. HORIZONTAL POSITIONING IS DETERMINED BY APPLANIX POS MV4 W/VRS-RTK OR MARINESTAR G2+.
5. GRID COORDINATES ARE BASED ON THE MICHIGAN STATE PLANE COORDINATE SYSTEM, LAMBERT PROJECTION, MICHIGAN CENTRAL ZONE (2112). NORTH AMERICAN DATUM (NAD83). ALL COORDINATES SHOWN ARE IN U.S. SURVEY FEET.
6. UNLESS OTHERWISE NOTED PROJECT DEPTHS ARE 5.0 FEET BELOW LWD

2012 AERIAL PHOTOGRAPHY DATA SOURCE: NAIP

**Sheet
Reference
Number
3 of 3**