

**NOTES:**

THE COORDINATE GRID SYSTEM SHOWN IS REFERENCED TO THE MICHIGAN STATE PLANE COORDINATE SYSTEM, LAMBERT PROJECTION, CENTRAL ZONE 2112, NORTH AMERICAN DATUM 1983 (NAD83), US SURVEY FOOT.

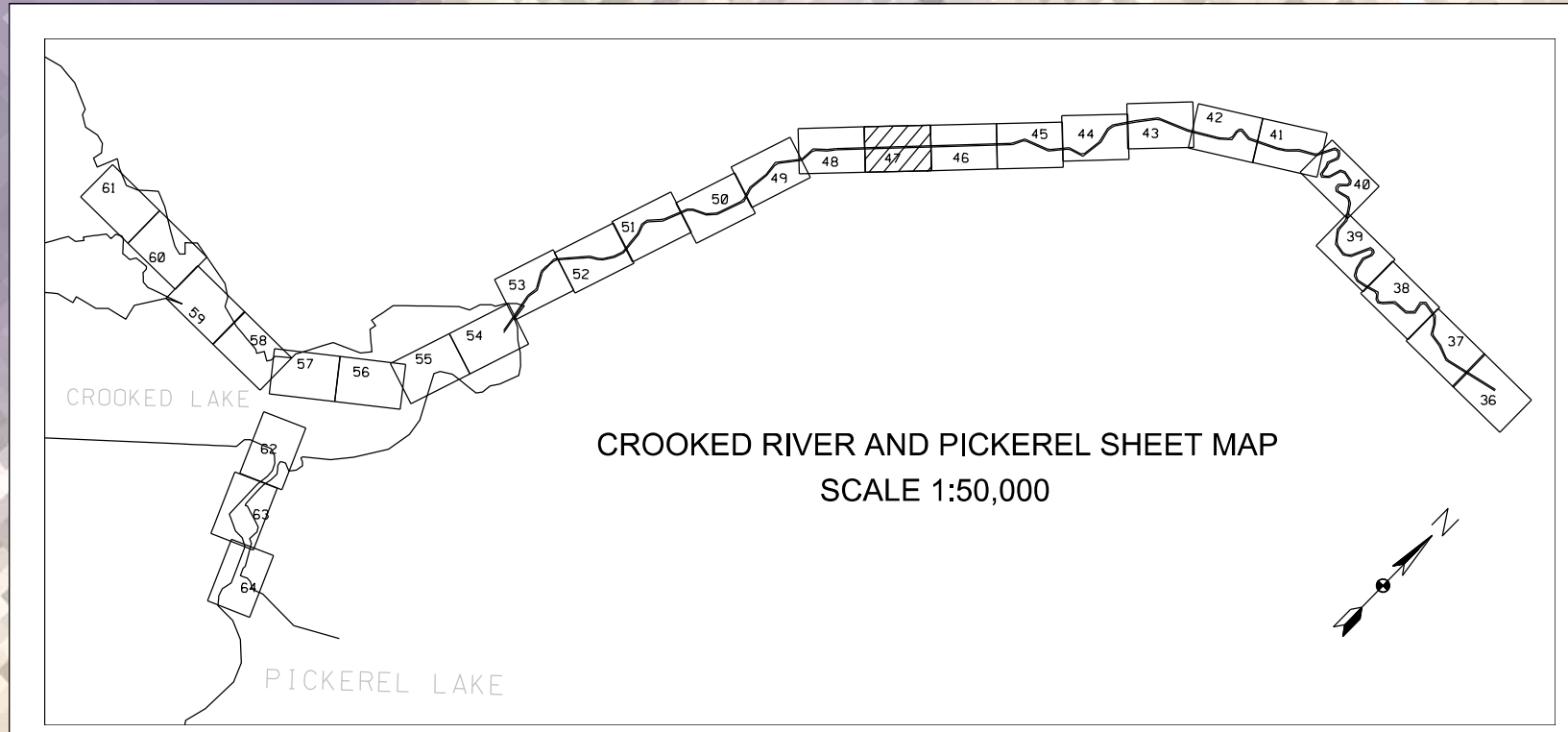
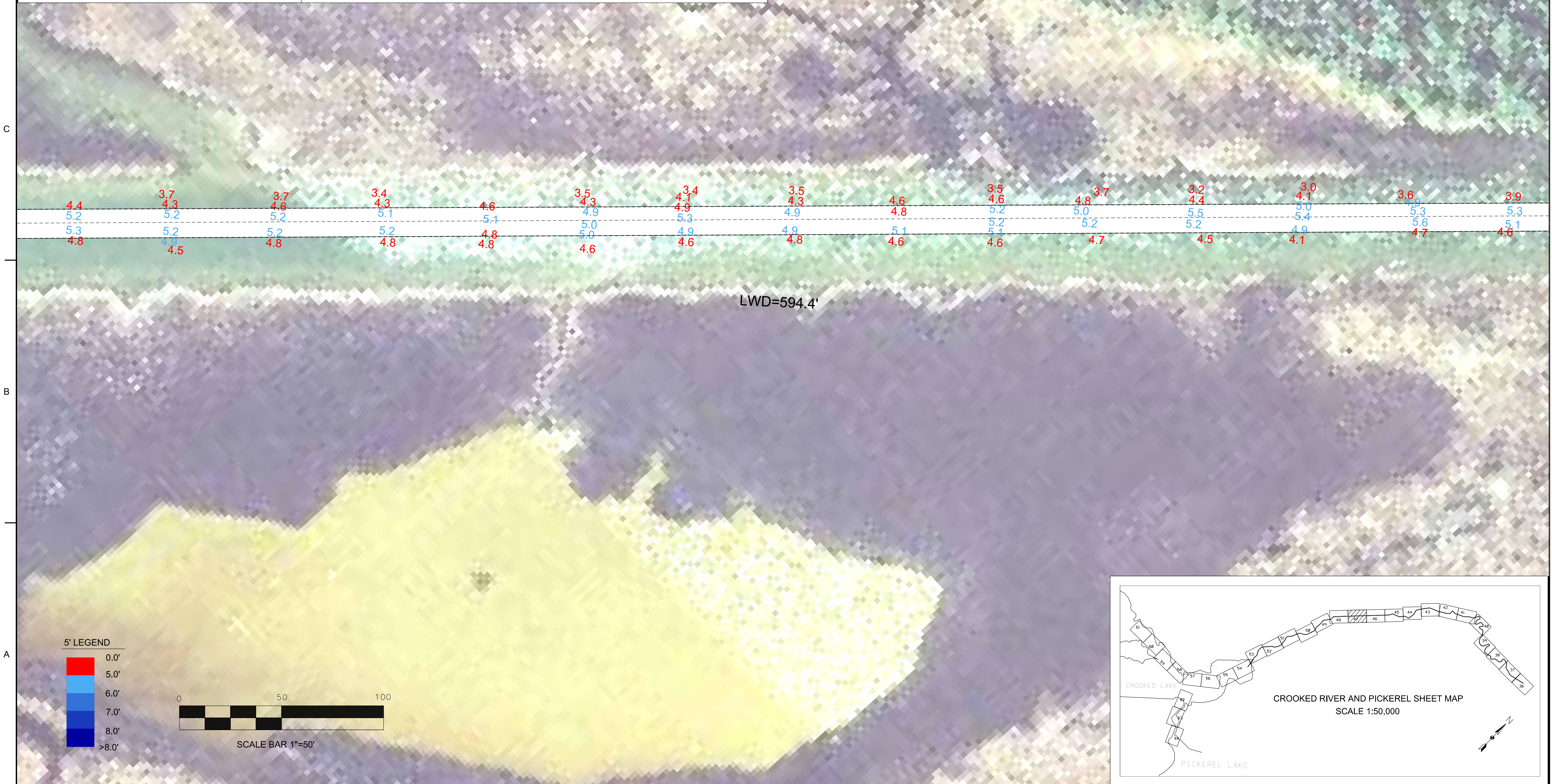
ALL SOUNDINGS ARE IN FEET AND ARE REFERENCED TO LOW WATER DATUM ELEVATIONS IN FEET ABOVE MEAN WATER LEVEL AT RIMOUSKI, QUEBEC (INTERNATIONAL GREAT LAKES DATUM 1985).

PROJECT DEPTH FOR THIS AREA IS 5.0'.

GAUGE WAS ESTABLISHED WITH RTK AT THE TIME OF THE SURVEY TO DETERMINE THE WATER LEVEL.

THE INFORMATION DEPICTED ON THIS MAP REPRESENTS THE RESULTS OF SURVEYS MADE ON THE DATES INDICATED AND CAN ONLY BE CONSIDERED AS INDICATING THE GENERAL CONDITIONS AT THAT TIME.

THE SURVEY SHOWN WAS CONDUCTED BY A DETROIT AREA OFFICE SURVEY PARTY ON 14-15 JUN 2017, USING TRIMBLE BLUE DGPS POSITIONING WITH CORRECTIONS FROM BECON FREQUENCY 292, AN ODOM CV300 SOUNDER (SINGLEBEAM), AND A HYPACK HYDROGRAPHIC SURVEY SYSTEM.



US Army Corps of Engineers Detroit District	
DATE	APPR.
DESCRIPTION	MARK
DATE	APPR.
DESCRIPTION	MARK
DATE	APPR.
DESCRIPTION	MARK

U.S. ARMY CORPS OF ENGINEERS DETROIT DISTRICT DETROIT, MICHIGAN	SURVEYOR: BARR DRAWN BY: ER REVIEWED BY: CY	DRAWING DATE: 2 OCT 2017 SUBMITTED BY: N/A CONTRACT NO.: N/A FILE NUMBER: N/A FILE NAME: N/A
	PLOT SCALE: 1"=50' SIZE: ANSI D	IMAGE DATE: AUG 2006 IMAGE SOURCE: USCS

INLAND ROUTE CHANNEL, MI  
CROOKED RIVER  
CONDITION OF CHANNEL

SHEET IDENTIFICATION  
VH101  
SHEET 47 OF 64