

1

2

3

4

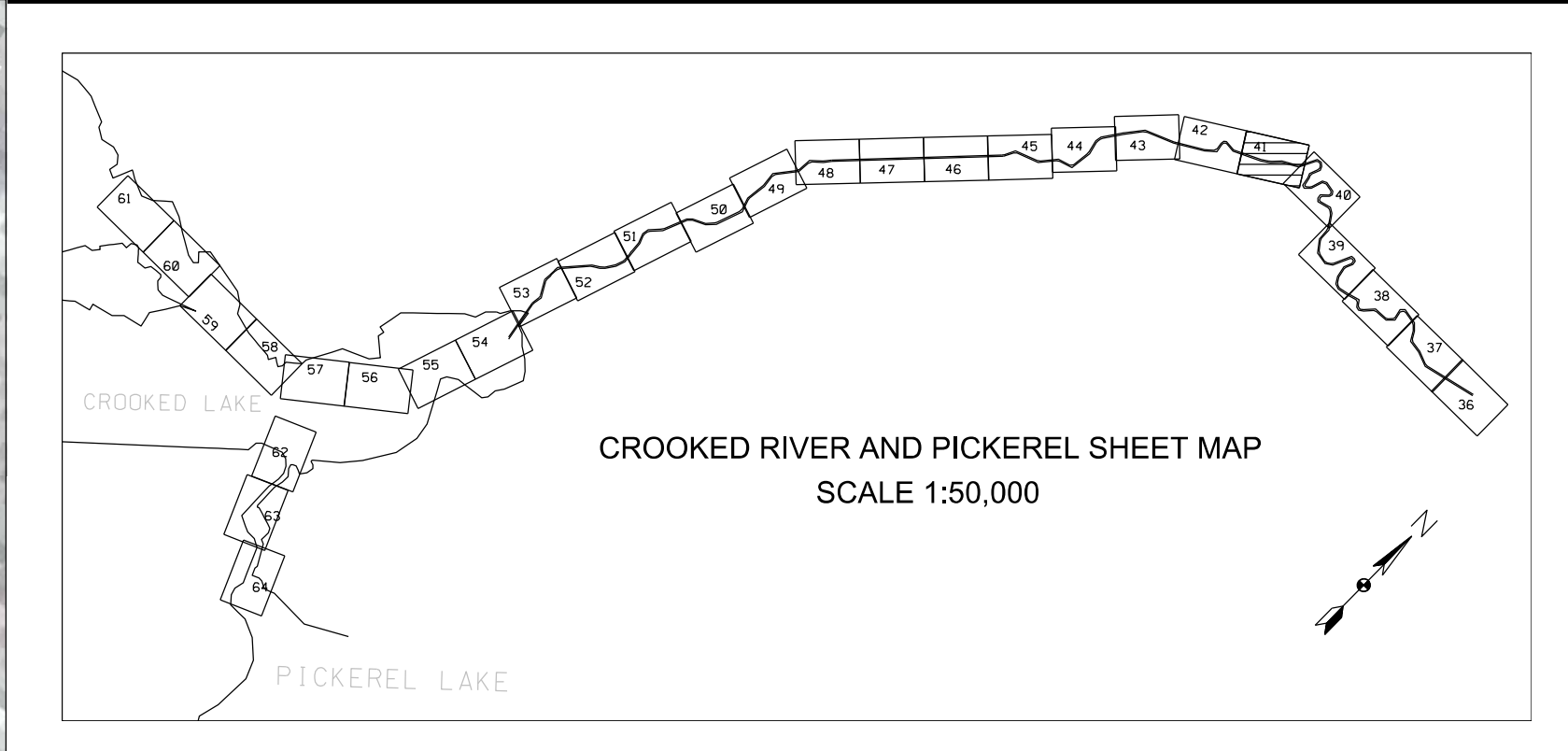
5

D

C

B

A



DATE	DESCRIPTION	MARK	DATE	DESCRIPTION	MARK

DRAWING DATE: 2 OCT 2017	DESIGNED BY: BR	APPROVED BY: CY	CONTRACT NO.:	FILE NUMBER:	FILE NAME:
			N/A	N/A	N/A

INLAND ROUTE CHANNEL, MI
CROOKED RIVER
CONDITION OF CHANNEL

SHEET IDENTIFICATION
VH101
SHEET 41 OF 64



NOTES:

THE COORDINATE GRID SYSTEM SHOWN IS REFERENCED TO THE MICHIGAN STATE PLANE COORDINATE SYSTEM, LAMBERT PROJECTION, CENTRAL ZONE 2112, NORTH AMERICAN DATUM 1983 (NAD83), US SURVEY FOOT.

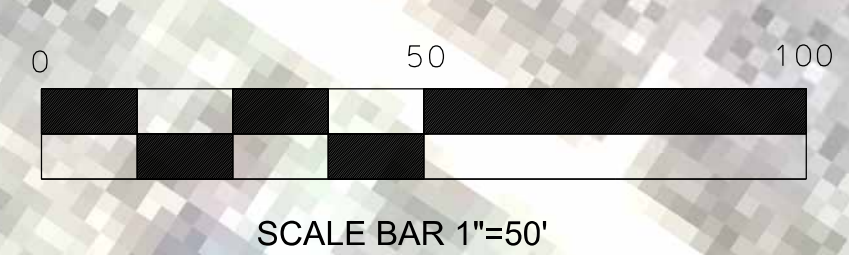
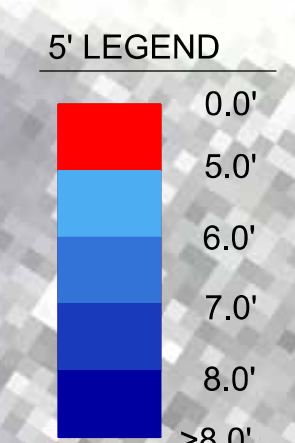
ALL SOUNDINGS ARE IN FEET AND ARE REFERENCED TO LOW WATER DATUM ELEVATIONS IN FEET ABOVE MEAN WATER LEVEL AT RIMOUSKI, QUEBEC (INTERNATIONAL GREAT LAKES DATUM 1985).

PROJECT DEPTH FOR THIS AREA IS 5.0'.

GAUGE WAS ESTABLISHED WITH RTK AT THE TIME OF THE SURVEY TO DETERMINE THE WATER LEVEL.

THE INFORMATION DEPICTED ON THIS MAP REPRESENTS THE RESULTS OF SURVEYS MADE ON THE DATES INDICATED AND CAN ONLY BE CONSIDERED AS INDICATING THE GENERAL CONDITIONS AT THAT TIME.

THE SURVEY SHOWN WAS CONDUCTED BY A DETROIT AREA OFFICE SURVEY PARTY ON 14-15 JUN 2017, USING TRIMBLE BLUE DGPS POSITIONING WITH CORRECTIONS FROM BECON FREQUENCY 292, AN ODOM CV300 SOUNDER (SINGLEBEAM), AND A HYPACK HYDROGRAPHIC SURVEY SYSTEM.



LWD=594.1' LWD=594.0'

