

**DISCLAIMER:** The United States Government furnishes these data and the recipient accepts and uses them with the express understanding that the United States Government makes no warranty, expressed or implied, concerning the accuracy, completeness, reliability, usability or suitability for any particular purpose of the data. The recipient shall be responsible for the accuracy of any of the application of the data for other than its intended purpose.

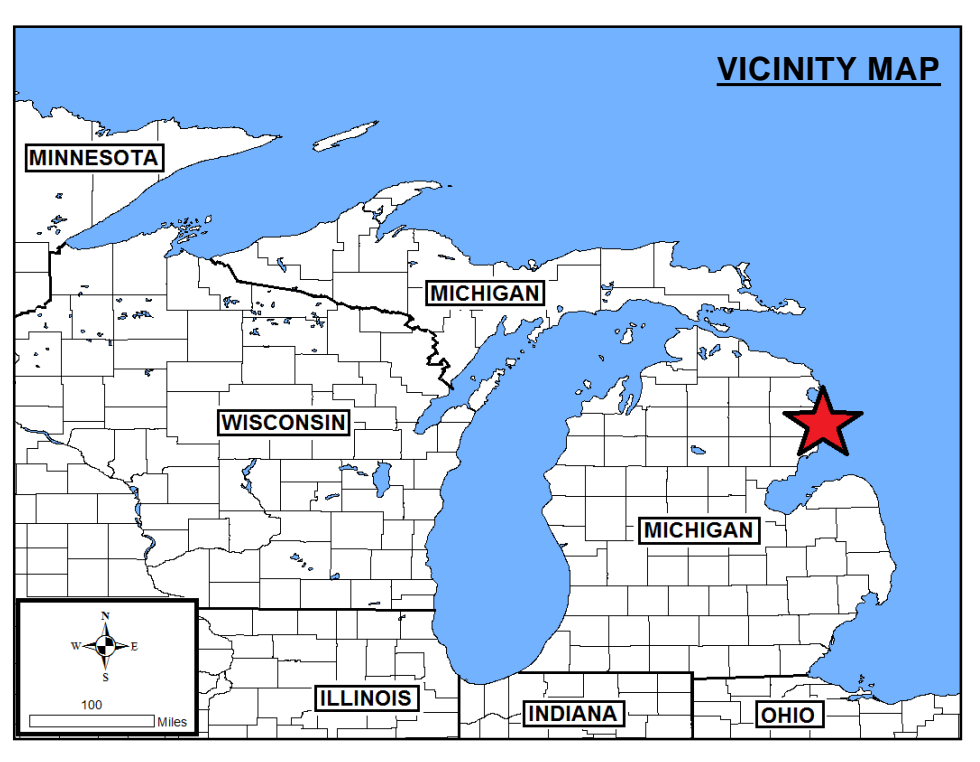
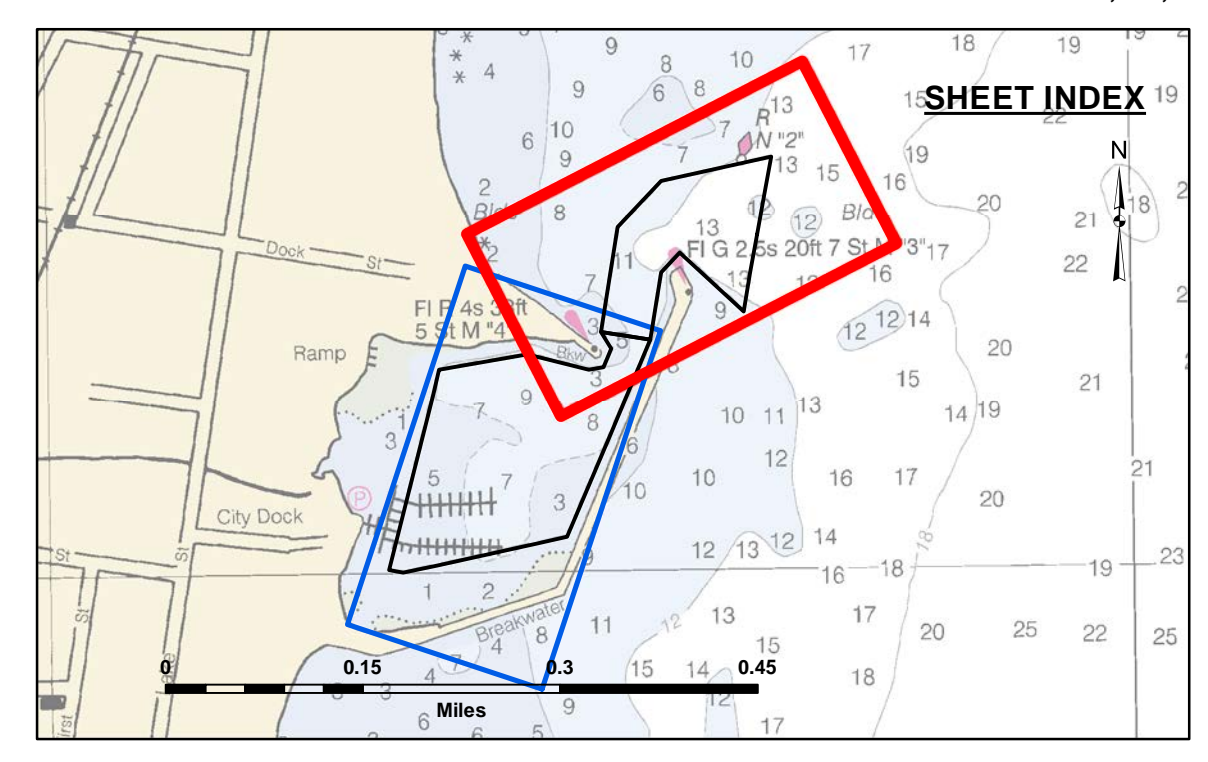
**Access Constraints:** The United States Government furnishes these data and the recipient accepts and uses them with the express understanding that the United States Government makes no warranty, expressed or implied, concerning the accuracy, completeness, reliability, usability or suitability for any particular purpose of the data. The recipient shall be responsible for the accuracy of any of the application of the data for other than its intended purpose.

U.S. ARMY CORPS OF ENGINEERS DETROIT DISTRICT		
Submitted:	Surveyed By:	
Recommended:	Plotted By:	
Approved:	Chief, Survey Section	
	Chief, Technical Services	

**Harrisville Harbor, MI**  
**Harrisville Harbor**  
**HR\_01\_SVL\_20220518\_CS**  
**18 May 2022**

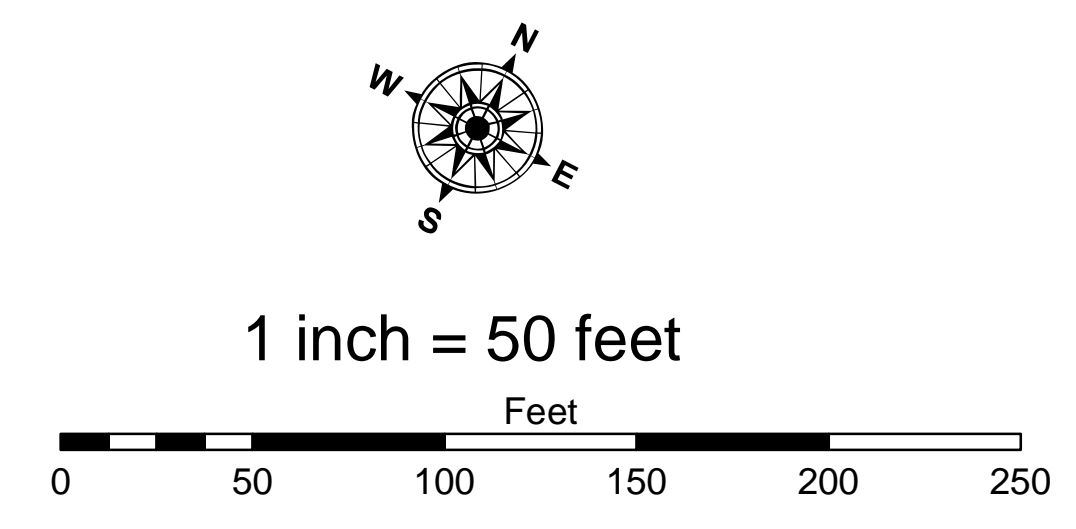
**Sheet Reference Number**  
**1 of 2**

Revision Number:  
4.2-20200320



- LEGEND**
- ..... Cable Submarine
  - - - Cable Overhead
  - ▭ Channel Limits
  - ⊥ Beacon, General
  - Contour Lines
  - ▭ Channel Limits

- SOUNDING LEGEND**
- LESS THAN PROJECT DEPTH
  - PROJECT DEPTH
  - PROJECT DEPTH +1'
  - PROJECT DEPTH +2'
  - PROJECT DEPTH +3'
  - PROJECT DEPTH +4'
  - PROJECT DEPTH +5'

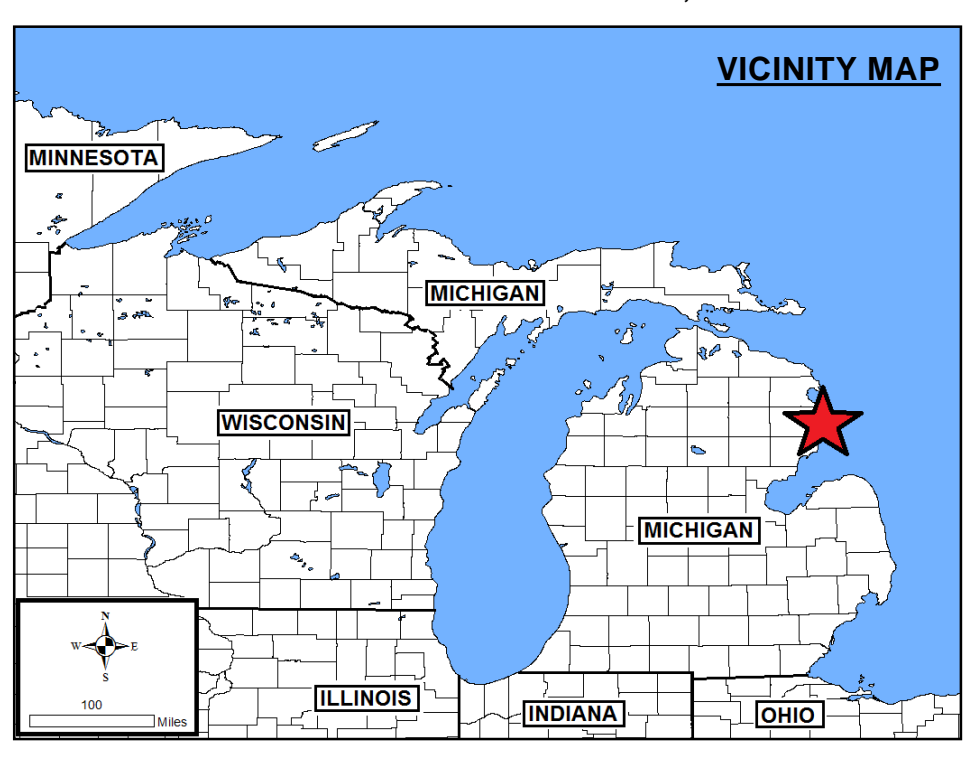
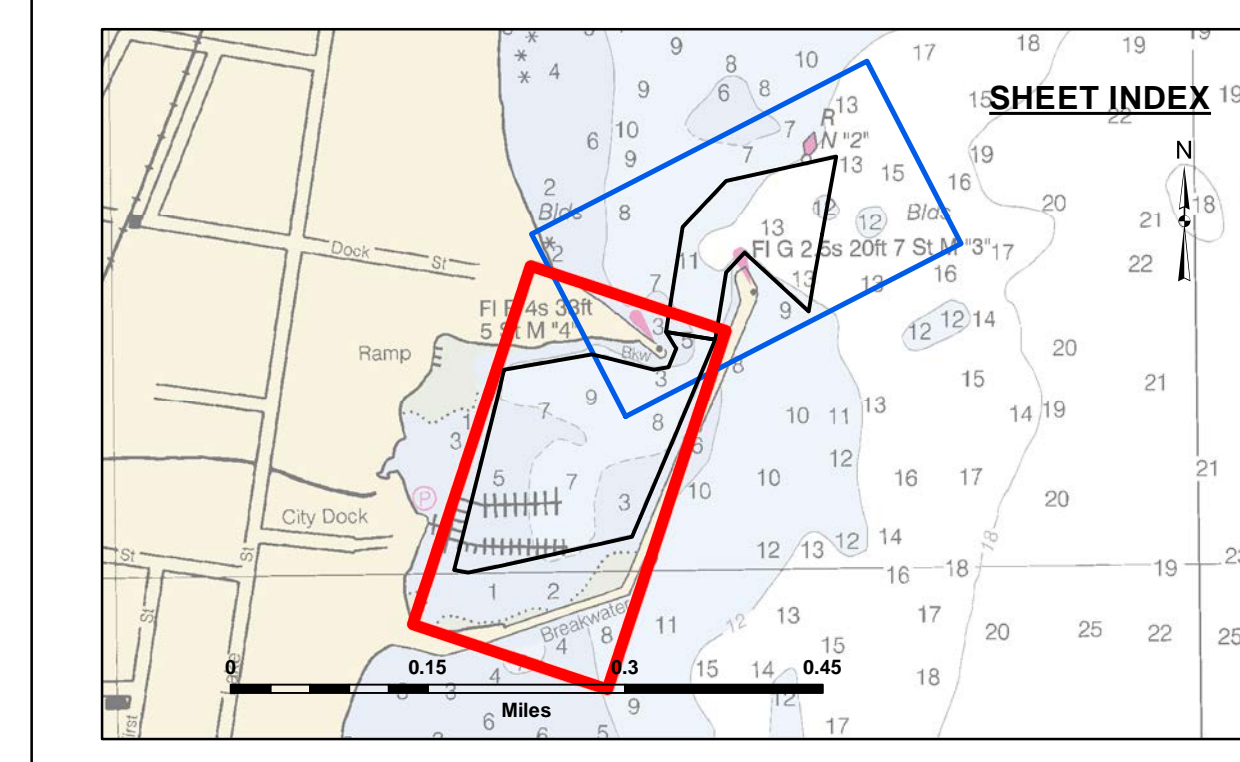


**NOTES:**

1. THE SOUNDINGS INDICATED HEREIN ARE GENERALIZED DEPTHS AND ARE NOT REPRESENTATIVE OF THE FULL DATASET.
2. ELEVATIONS AND SOUNDING DEPTHS ARE REFERRED TO INTERNATIONAL GREAT LAKES DATUM 1985 (IGLD 85). LOW WATER DATUM (LWD) ZERO IS 577.5 FEET ABOVE MEAN WATER LEVEL AT FATHER POINT QUEBEC. WATER LEVEL READINGS ARE FROM A TBM I BEAM WHICH WAS ESTABLISHED FROM NGS CONTROL POINT K306 (PID PK0230).
3. THE INFORMATION DEPICTED ON THIS MAP REPRESENTS THE RESULTS OF SURVEYS MADE ON DATES INDICATED AND CAN ONLY BE CONSIDERED AS INDICATING THE GENERAL CONDITIONS PRESENT AT THE TIME.
4. THE ABOVE SURVEY WAS CONDUCTED USING THE U.S.A.C.E. SURVEY SKIFF EMPLOYING THE FOLLOWING COMPONENTS:  
 POSITIONING: TRIMBLE BLEUWDGPS  
 SONAR: ODOM CV-300  
 SOFTWARE: HYPACK 2015
5. GRID COORDINATES ARE BASED ON THE MICHIGAN STATE PLANE COORDINATE SYSTEM, LAMBERT PROJECTION, MICHIGAN CENTRAL ZONE (2112). NORTH AMERICAN DATUM (NAD83). ALL COORDINATES SHOWN ARE IN U.S. SURVEY FEET.
6. UNLESS OTHERWISE NOTED PROJECT DEPTHS ARE 10.0 AND 12.0 FEET BELOW LWD

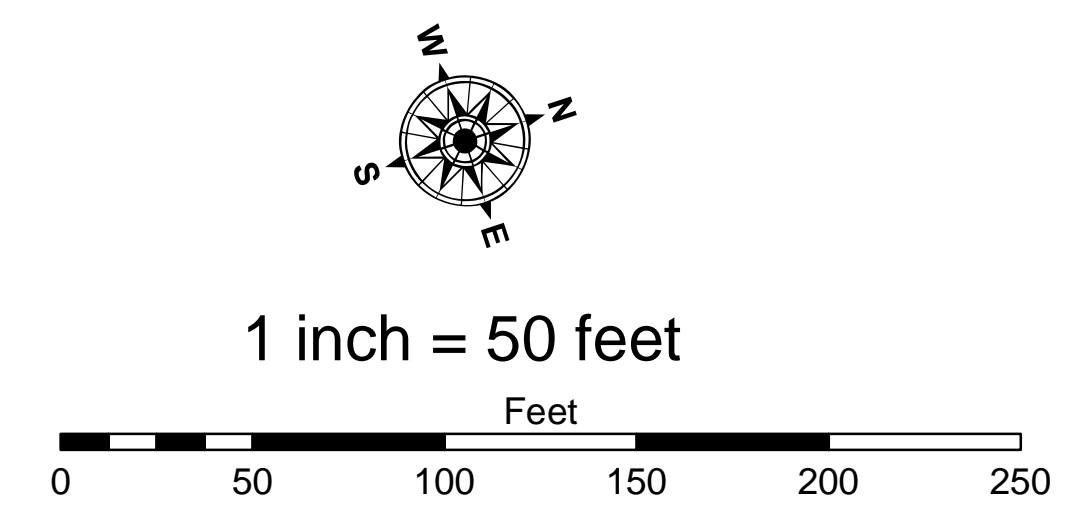
2012 AERIAL PHOTOGRAPHY DATA SOURCE: NAIP





- LEGEND**
- ..... Cable Submarine
  - - - Cable Overhead
  - ▭ Channel Limits
  - ⊥ Beacon, General
  - Contour Lines
  - ▭ Channel Limits

- SOUNDING LEGEND**
- LESS THAN PROJECT DEPTH
  - PROJECT DEPTH
  - PROJECT DEPTH +1'
  - PROJECT DEPTH +2'
  - PROJECT DEPTH +3'
  - PROJECT DEPTH +4'
  - PROJECT DEPTH +5'



**NOTES:**

1. THE SOUNDINGS INDICATED HEREIN ARE GENERALIZED DEPTHS AND ARE NOT REPRESENTATIVE OF THE FULL DATASET.
2. ELEVATIONS AND SOUNDING DEPTHS ARE REFERRED TO INTERNATIONAL GREAT LAKES DATUM 1985 (IGLD 85). LOW WATER DATUM (LWD) ZERO IS 577.5 FEET ABOVE MEAN WATER LEVEL AT FATHER POINT QUEBEC. WATER LEVEL READINGS ARE FROM A TBM I BEAM WHICH WAS ESTABLISHED FROM NGS CONTROL POINT K306 (PID PK0230).
3. THE INFORMATION DEPICTED ON THIS MAP REPRESENTS THE RESULTS OF SURVEYS MADE ON DATES INDICATED AND CAN ONLY BE CONSIDERED AS INDICATING THE GENERAL CONDITIONS PRESENT AT THE TIME.
4. THE ABOVE SURVEY WAS CONDUCTED USING THE U.S.A.C.E. SURVEY SKIFF EMPLOYING THE FOLLOWING COMPONENTS:  
 POSITIONING: TRIMBLE BLEUWDGPS  
 SONAR: ODOM CV-300  
 SOFTWARE: HYPACK 2015
5. GRID COORDINATES ARE BASED ON THE MICHIGAN STATE PLANE COORDINATE SYSTEM, LAMBERT PROJECTION, MICHIGAN CENTRAL ZONE (2112). NORTH AMERICAN DATUM (NAD83). ALL COORDINATES SHOWN ARE IN U.S. SURVEY FEET.
6. UNLESS OTHERWISE NOTED PROJECT DEPTHS ARE 10.0 AND 12.0 FEET BELOW LWD

2012 AERIAL PHOTOGRAPHY DATA SOURCE: NAIP



**DISCLAIMER:** The United States Government furnishes these data and the recipient accepts and uses them with the express understanding that the Government makes no warranty, representation, or implied concerning the accuracy, completeness, reliability, usability or suitability for any particular purpose of the data. The recipient shall be responsible for the accuracy of any of the application of the data for other than its intended purpose. The recipient may not transfer these data to others without also transferring this Disclaimer.

U.S. ARMY CORPS OF ENGINEERS DETROIT DISTRICT		
Submitted:	Surveyed By:	Checked By:
Recommended:	Plotted By:	
Chief, Survey Section		Chief, Technical Services

Harrisville Harbor, MI  
 Harrisville Harbor  
 HR\_01\_SVL\_20220518\_CS  
 18 May 2022

Sheet Reference Number  
 2 of 2