

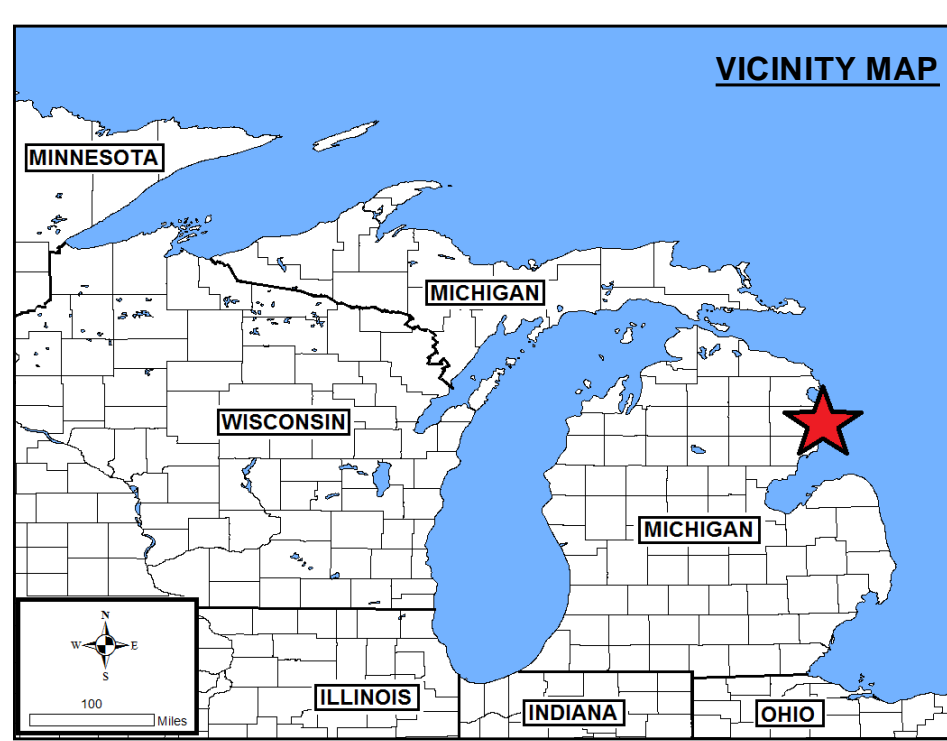
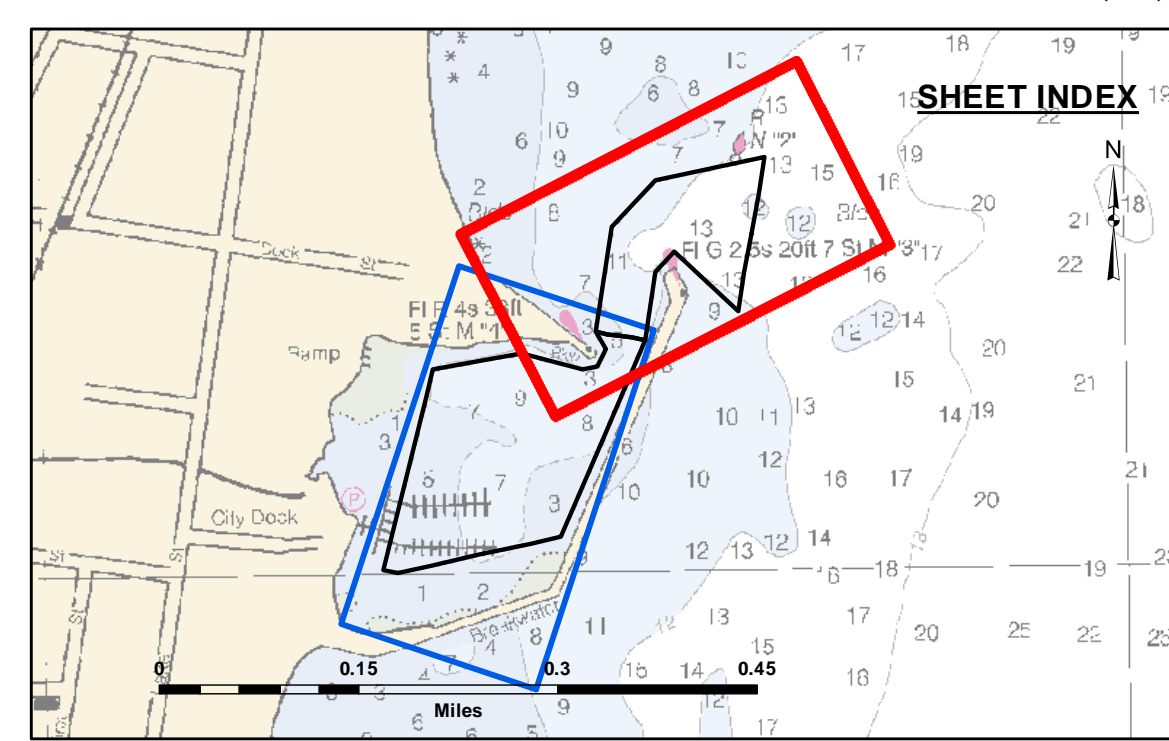
DISCLAIMER: The data represents the results of data collection/processing for a specific US Army Corps of Engineers activity and indicates the general existing conditions. Engineers assume no liability for the accuracy, completeness, reliability, usability, or suitability for any particular purpose of the information provided. The user is responsible for the accuracy of any of the application of the data for other than its intended purpose.

DISCLAIMER: The United States Government furnishes these data and the recipient accepts and uses them with the express understanding that the Government makes no warranty, expressed, implied, or otherwise, concerning the accuracy, completeness, reliability, usability, or suitability for any particular purpose of the information provided. The user is responsible for the accuracy of any of the application of the data for other than its intended purpose. These data belong to the Government. Therefore the recipient may not transfer these data to others without also transferring this Disclaimer.

U.S. ARMY CORPS OF ENGINEERS DETROIT DISTRICT		
Submitted By:	Surveyed By:	
Recommended By: Chief, Survey Section	Plotted By:	
Approved:	Checked By:	

Harrisville Harbor, MI
Harrisville Harbor
HR_01_SVL_20210715_CS
15 July 2021

Sheet Reference Number
1 of 2

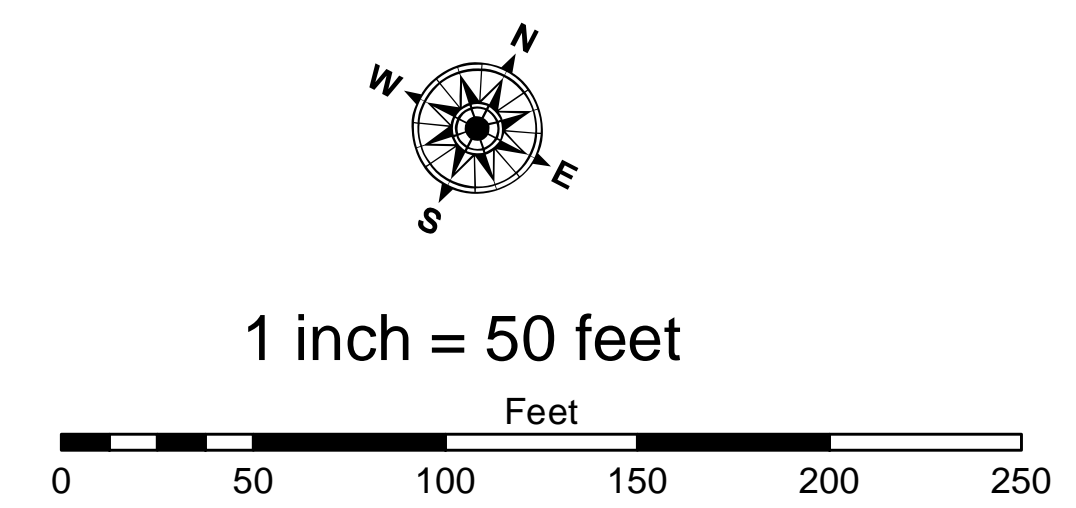


LEGEND

- Cable Submarine
- - - Cable Overhead
- ▭ Channel_Limits
- ⊥ Beacon, General
- Contour Lines
- ▭ Channel_Limits

SOUNDING LEGEND

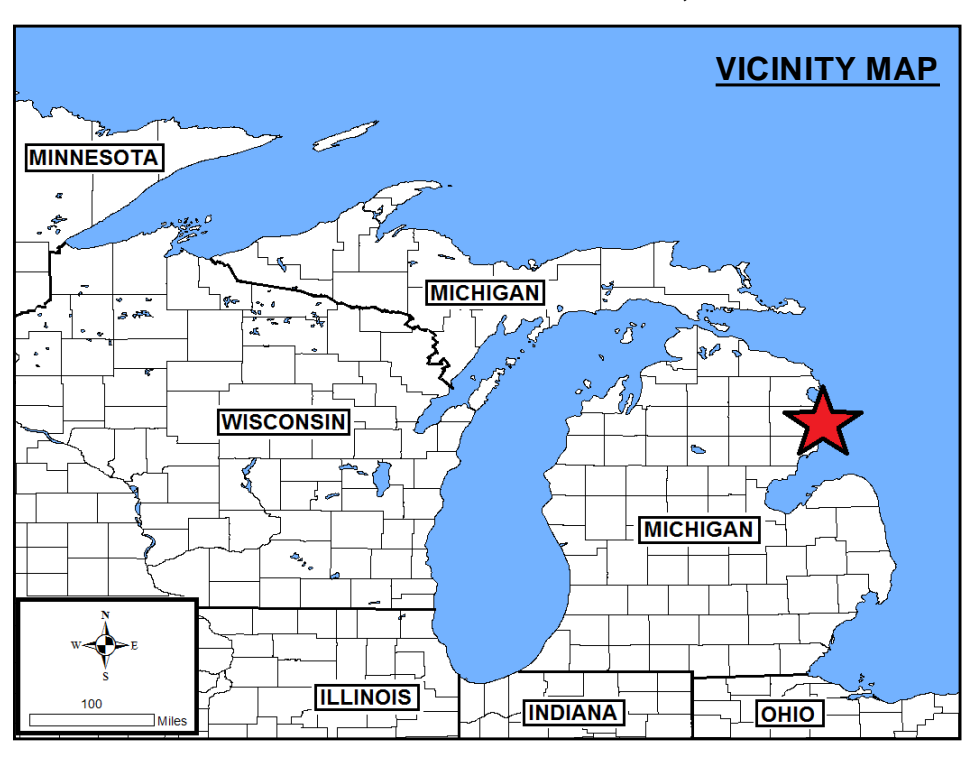
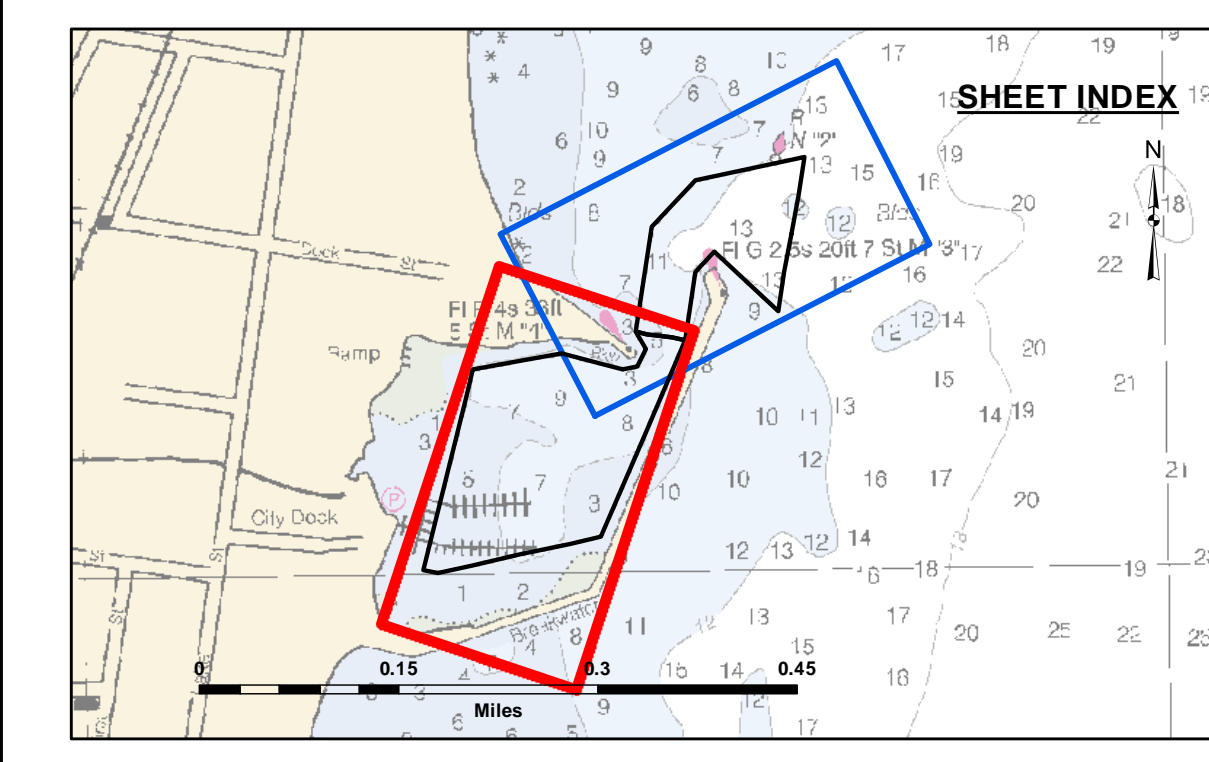
- LESS THAN PROJECT DEPTH
- PROJECT DEPTH
- PROJECT DEPTH +1'
- PROJECT DEPTH +2'
- PROJECT DEPTH +3'
- PROJECT DEPTH +4'
- PROJECT DEPTH +5'



NOTES:

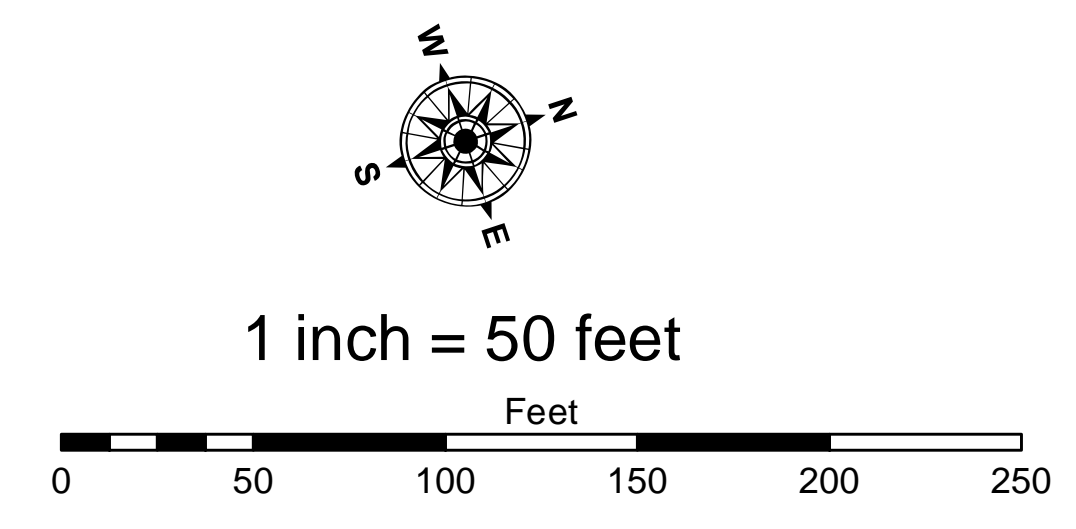
1. THE SOUNDINGS INDICATED HEREIN ARE GENERALIZED DEPTHS AND ARE NOT REPRESENTATIVE OF THE FULL DATASET.
2. ELEVATIONS AND SOUNDING DEPTHS ARE REFERRED TO INTERNATIONAL GREAT LAKES DATUM 1985 (IGLD 85). LOW WATER DATUM (LWD) ZERO IS 577.5 FEET ABOVE MEAN WATER LEVEL AT FATHER POINT QUEBEC. WATER LEVEL READINGS ARE FROM A TBM I BEAM WHICH WAS ESTABLISHED FROM NGS CONTROL POINT K306 (PID PK0230).
3. THE INFORMATION DEPICTED ON THIS MAP REPRESENTS THE RESULTS OF SURVEYS MADE ON DATES INDICATED AND CAN ONLY BE CONSIDERED AS INDICATING THE GENERAL CONDITIONS PRESENT AT THE TIME.
4. THE ABOVE SURVEY WAS CONDUCTED USING THE U.S.A.C.E. SURVEY SKIFF EMPLOYING THE FOLLOWING COMPONENTS:
POSITIONING: TRIMBLE BLUEW/DGPS
SONAR: ODOM CV-300
SOFTWARE: HYPACK 2015
5. GRID COORDINATES ARE BASED ON THE MICHIGAN STATE PLANE COORDINATE SYSTEM, LAMBERT PROJECTION, MICHIGAN CENTRAL ZONE (2112). NORTH AMERICAN DATUM (NAD83). ALL COORDINATES SHOWN ARE IN U.S. SURVEY FEET.
6. UNLESS OTHERWISE NOTED PROJECT DEPTHS ARE 10.0 AND 12.0 FEET BELOW LWD

2012 AERIAL PHOTOGRAPHY DATA SOURCE: NAIP



- LEGEND**
- Cable Submarine
 - - - Cable Overhead
 - ▭ Channel_Limits
 - ⊥ Beacon, General
 - Contour Lines
 - ▭ Channel_Limits

- SOUNDING LEGEND**
- LESS THAN PROJECT DEPTH
 - PROJECT DEPTH
 - PROJECT DEPTH +1'
 - PROJECT DEPTH +2'
 - PROJECT DEPTH +3'
 - PROJECT DEPTH +4'
 - PROJECT DEPTH +5'



NOTES:

1. THE SOUNDINGS INDICATED HEREIN ARE GENERALIZED DEPTHS AND ARE NOT REPRESENTATIVE OF THE FULL DATASET.
2. ELEVATIONS AND SOUNDING DEPTHS ARE REFERRED TO INTERNATIONAL GREAT LAKES DATUM 1985 (IGLD 85). LOW WATER DATUM (LWD) ZERO IS 577.5 FEET ABOVE MEAN WATER LEVEL AT FATHER POINT QUEBEC. WATER LEVEL READINGS ARE FROM A TBM I BEAM WHICH WAS ESTABLISHED FROM NGS CONTROL POINT K306 (PID PK0230).
3. THE INFORMATION DEPICTED ON THIS MAP REPRESENTS THE RESULTS OF SURVEYS MADE ON DATES INDICATED AND CAN ONLY BE CONSIDERED AS INDICATING THE GENERAL CONDITIONS PRESENT AT THE TIME.
4. THE ABOVE SURVEY WAS CONDUCTED USING THE U.S.A.C.E. SURVEY SKIFF EMPLOYING THE FOLLOWING COMPONENTS:
POSITIONING: TRIMBLE BLUEWDGPS
SONAR: ODOM CV-300
SOFTWARE: HYPACK 2015
5. GRID COORDINATES ARE BASED ON THE MICHIGAN STATE PLANE COORDINATE SYSTEM, LAMBERT PROJECTION, MICHIGAN CENTRAL ZONE (2112), NORTH AMERICAN DATUM (NAD83). ALL COORDINATES SHOWN ARE IN U.S. SURVEY FEET.
6. UNLESS OTHERWISE NOTED PROJECT DEPTHS ARE 10.0 AND 12.0 FEET BELOW LWD

2012 AERIAL PHOTOGRAPHY DATA SOURCE: NAIP



DISCLAIMER: The data represents the results of data collection and processing for a specific US Army Corps of Engineers activity and indicates the general existing conditions. The data is not intended for use for any other purpose than the intended purpose. The user is responsible for the accuracy, completeness, and reliability of the data for other than its intended purpose. The data is provided as a service to the user and is not intended to be used for any other purpose than the intended purpose. The user is responsible for the accuracy, completeness, and reliability of the data for other than its intended purpose. The data is provided as a service to the user and is not intended to be used for any other purpose than the intended purpose.

U.S. ARMY CORPS OF ENGINEERS
DETROIT DISTRICT

Submitted:	Surveyed By:
Recommended:	Plotted By:
Approved:	Checked By:

Harrisville Harbor, MI
Harrisville Harbor
HR_01_SVL_20210715_CS
15 July 2021

Sheet Reference Number
2 of 2