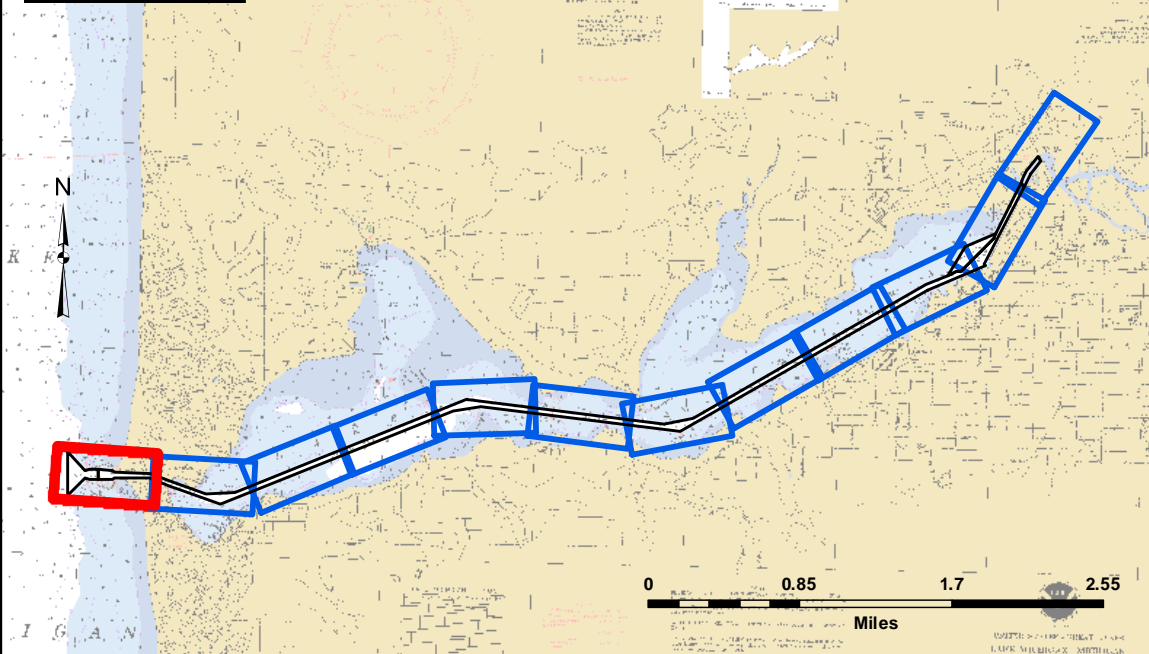




SHEET INDEX



VICINITY MAP



LEGEND

- Cable Submarine
- - Cable Overhead
- Placement Area
- Beacon, General
- Contour Lines
- Channel_Limits

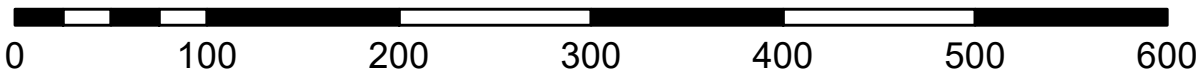
SOUNDING LEGEND

- LESS THAN PROJECT DEPTH
- PROJECT DEPTH
- PROJECT DEPTH +1'
- PROJECT DEPTH +2'
- PROJECT DEPTH +3'
- PROJECT DEPTH +4'
- PROJECT DEPTH +5'



1 inch = 100 feet

Feet



NOTES: THE INFORMATION DEPICTED ON THIS MAP REPRESENTS THE RESULTS OF SURVEYS MADE ON THE DATES INDICATED AND CAN ONLY BE CONSIDERED AS INDICATING THE GENERAL CONDITIONS EXISTING AT THAT TIME.

GRID SYSTEM BASED ON LAMBERT PROJECTION, MICHIGAN STATE PLANE COORDINATE SYSTEM, SOUTH ZONE (2113) 1983 NORTH AMERICAN DATUM, U.S. FOOT.

ALL SOUNDINGS ARE REFERENCED TO I.G.L.D. 1985 FOR LAKE MICHIGAN, ELEVATION 577.5 FT. ABOVE MEAN SEA LEVEL AT RIMOUSKI, QUEBEC, HYDRAULIC CORRECTOR OF 0.3 FT. APPLIED

VERTICAL WATER LEVEL READINGS WERE TAKEN FROM A FIXED GAGE MARK ALONG THE SHEET STEEL WALL NEAR CROSS SECTION 17+50E IN HOLLAND HARBOR, MI.

PROJECT DEPTHS FOR THIS HARBOR RANGE FROM 18.0' TO 23.0'

2010 AERIAL PHOTOGRAPHY DATA SOURCE: USGS

U.S. ARMY CORPS OF ENGINEERS

DETROIT DISTRICT

Submitted:

Surveyed By:

Recommended:

Plotted By:

Approved:

Checked By:

HOLLAND HARBOR, MI

Holland Harbor

HO_01_LND_20200921_AD

21 September 2020

Sheet
Reference
Number
1 of 12

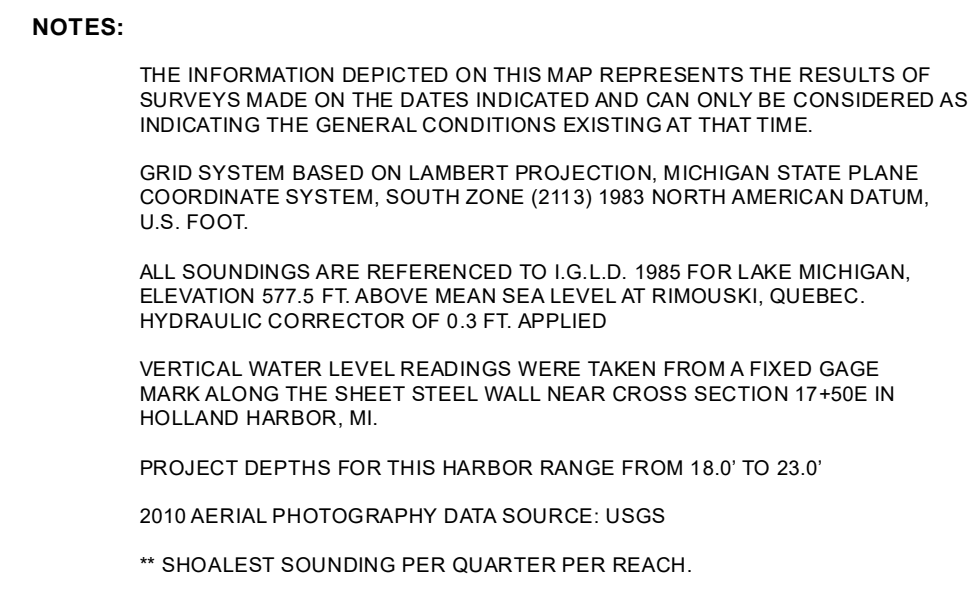
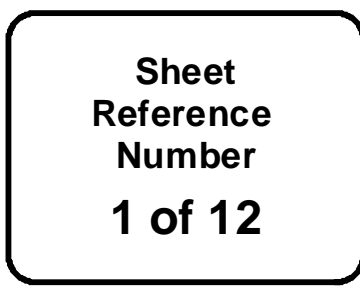
Revision Number:
4.1-20191105

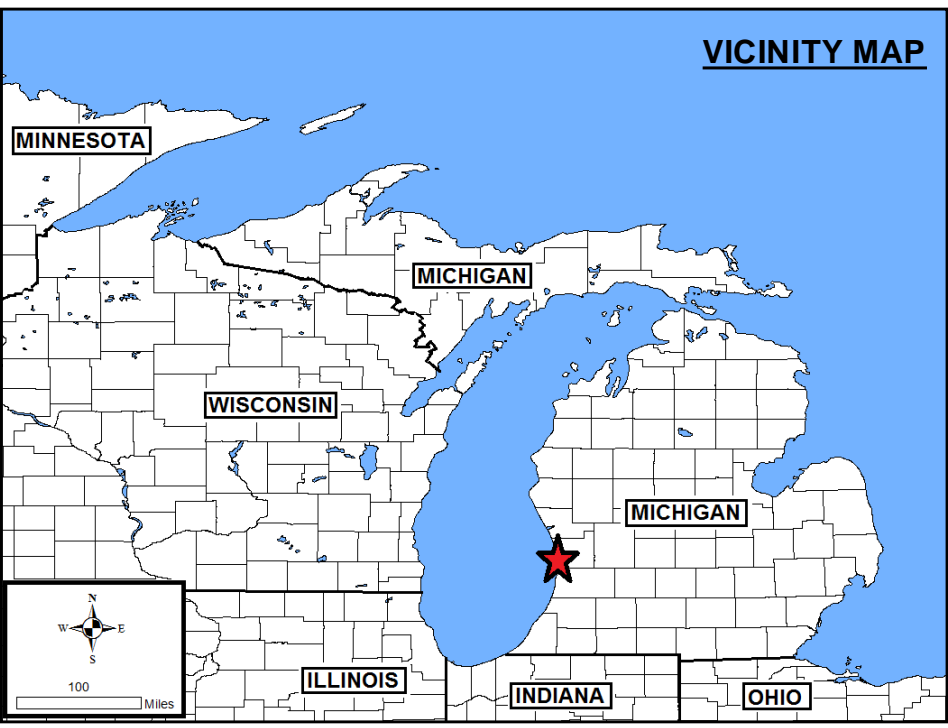
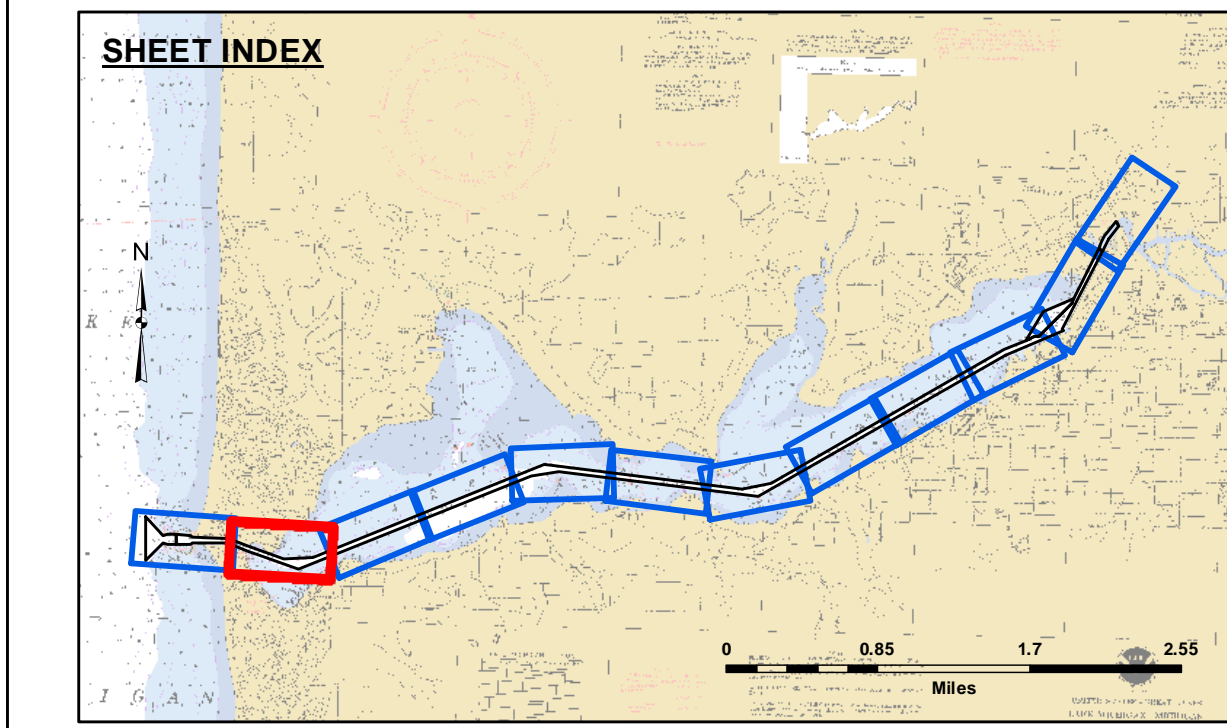
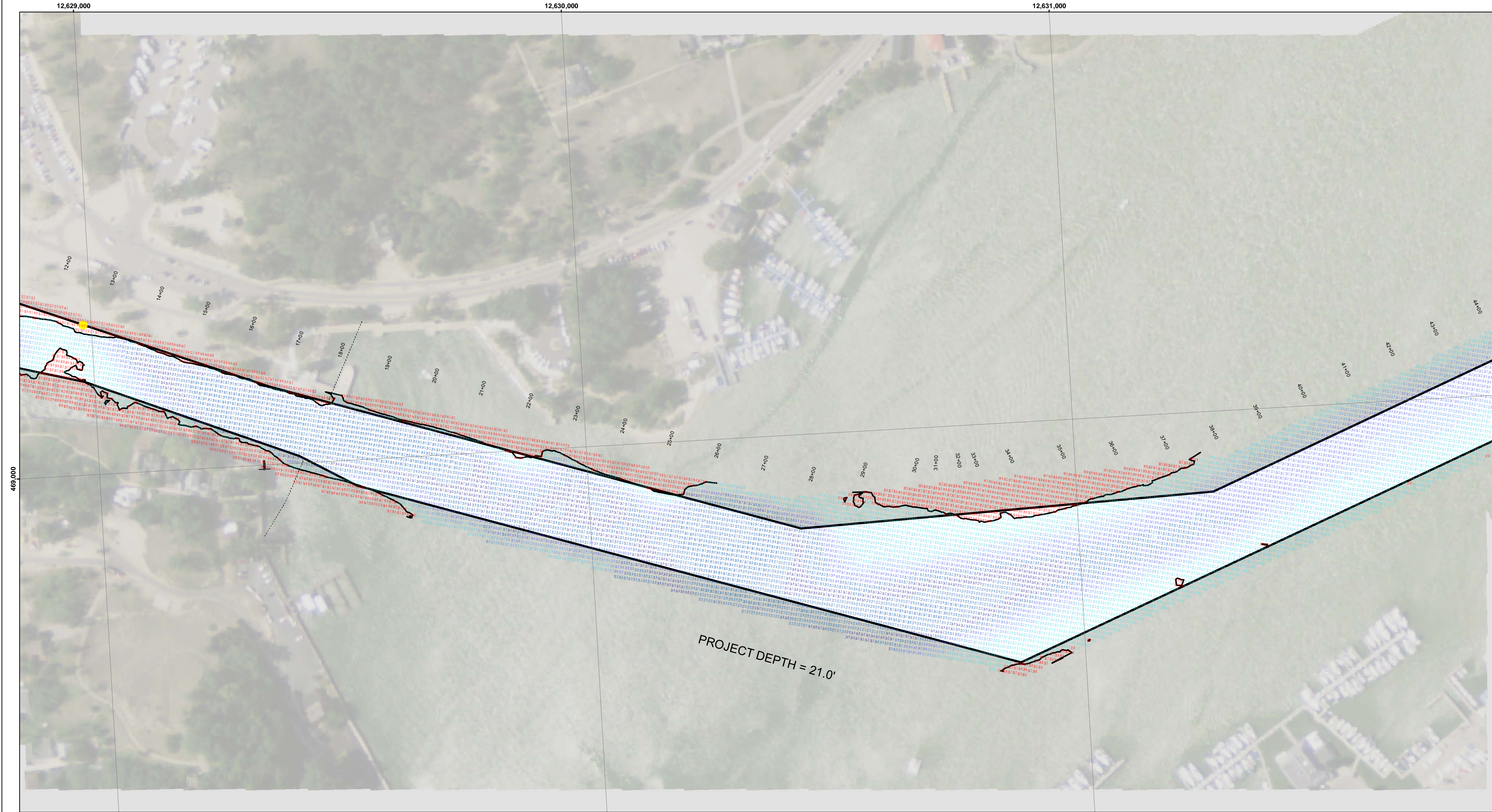


US Army Corps
of Engineers
District: CELRE

DISCLAIMER: The data represented by the results of data collection is for informational purposes only. The U.S. Army Corps of Engineers does not warrant the accuracy, completeness, or reliability of the data for any purpose other than its intended purpose. The user is responsible for the results of any application of the data for other than its intended purpose.

DISCLAIMER: The United States Government furnishes these data and the recipient accepts and uses them with the express understanding that the data are not to be used for any purpose other than that for which they were provided. The U.S. Army Corps of Engineers does not warrant the accuracy, completeness, or reliability of the data for any purpose other than its intended purpose. The user is responsible for the results of any application of the data for other than its intended purpose.





LEGEND

— Federal Navigation Channel	Shoaling Area
— Federal Navigation Center Line	Shoalest Sounding**
..... Cable Submarine	Beacon, General
- - Cable Overhead	Red Navigation Buoy
— Contour Line	Green Navigation Buoy
□ Placement Area	

NOTES:

THE INFORMATION DEPICTED ON THIS MAP REPRESENTS THE RESULTS OF SURVEYS MADE ON THE DATES INDICATED AND CAN ONLY BE CONSIDERED AS INDICATING THE GENERAL CONDITIONS EXISTING AT THAT TIME.

GRID SYSTEM BASED ON LAMBERT PROJECTION, MICHIGAN STATE PLANE COORDINATE SYSTEM, SOUTH ZONE (2113) 1983 NORTH AMERICAN DATUM, U.S. FOOT.

ALL SOUNDINGS ARE REFERENCED TO I.G.L.D. 1985 FOR LAKE MICHIGAN, ELEVATION 577.5 FT. ABOVE MEAN SEA LEVEL AT RIMOUSKI, QUEBEC. HYDRAULIC CORRECTOR OF 0.3 FT. APPLIED.

VERTICAL WATER LEVEL READINGS WERE TAKEN FROM A FIXED GAGE MARK ALONG THE SHEET STEEL WALL NEAR CROSS SECTION 17+50E IN HOLLAND HARBOR, MI.

PROJECT DEPTHS FOR THIS HARBOR RANGE FROM 18.0' TO 23.0'

2010 AERIAL PHOTOGRAPHY DATA SOURCE: USGS

** SHOALEST SOUNDING PER QUARTER PER REACH.

1 inch = 100 feet

Feet

0 200 400 600


US Army Corps of Engineers
District: CELRE

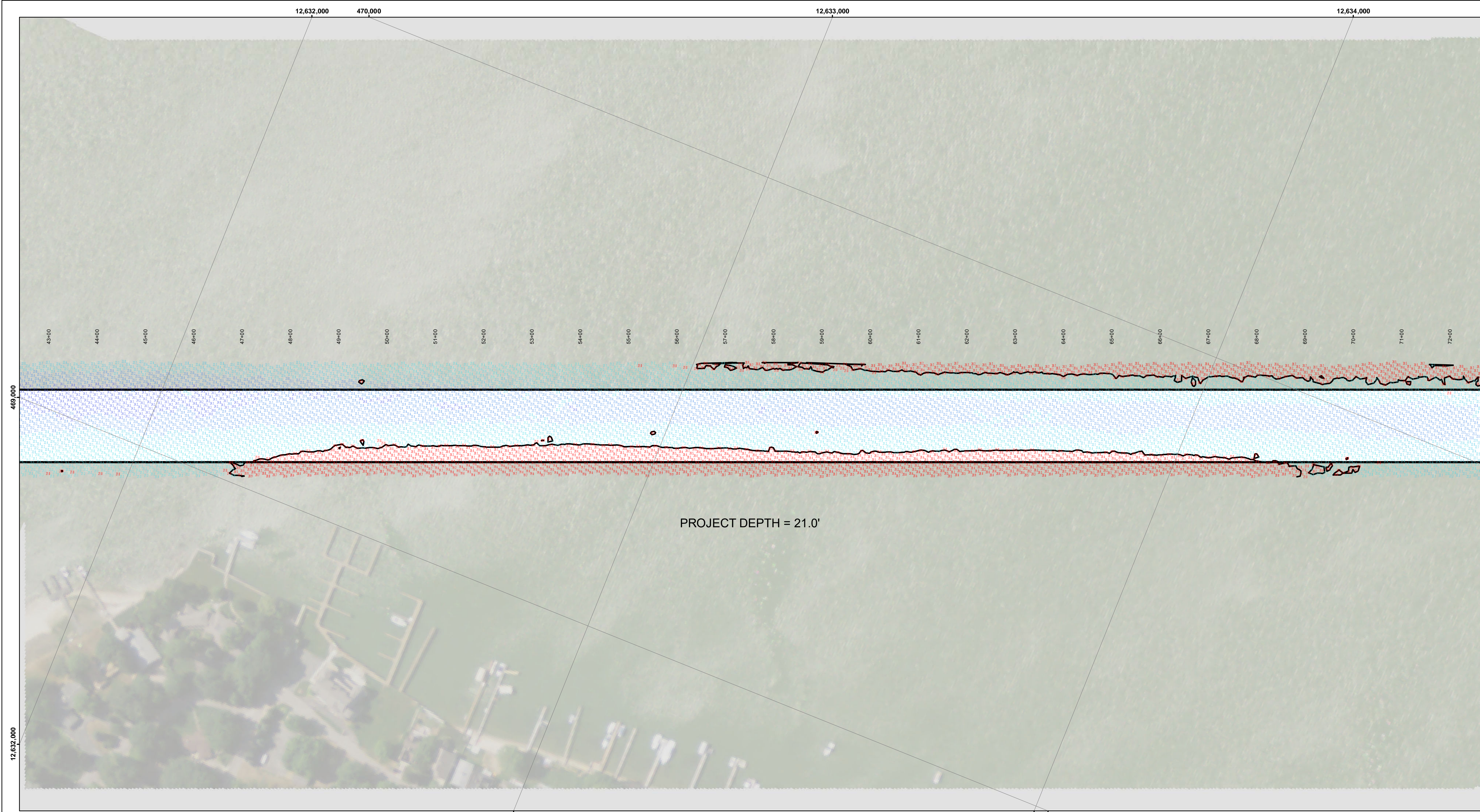
DISCLAIMER: The data represented by the results of data collection and processing for a specific US Army Corps of Engineers activity and indicates the general existing conditions, accuracy, and completeness. The user is responsible for the results of any of the application of the data for other than its intended purpose.

DISCLAIMER: The United States Government furnishes these data and the recipient accepts and uses them with the express understanding that the data are not to be used for any purpose other than that for which they were provided. The recipient may not transfer these data to others without also transferring this Disclaimer.

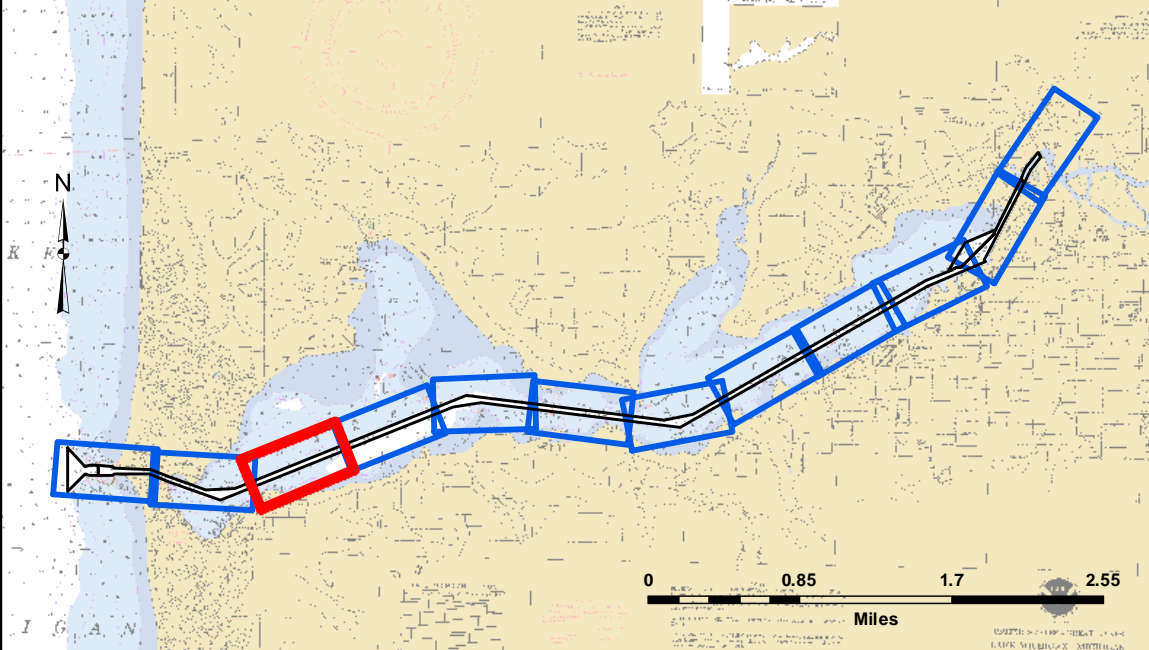
U.S. ARMY CORPS OF ENGINEERS DETROIT DISTRICT	Submitted:	Surveyed By:
	Recommended:	Plotted By:
	Approved:	Checked By:

HOLLAND HARBOR, MI
Holland Harbor
HO_01_LND_20200416_CS
16 April 2020

Sheet Reference Number
2 of 12



SHEET INDEX

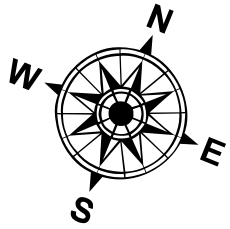


VICINITY MAP

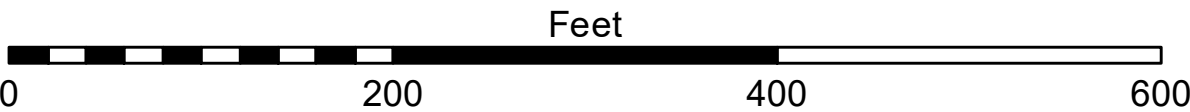


LEGEND

- Federal Navigation Channel
- Federal Navigation Center Line
- Cable Submarine
- - Cable Overhead
- Contour Line
- Placement Area
- Shoaling Area
- Shoalest Sounding**
- ⚓ Beacon, General
- ♦ Red Navigation Buoy
- ◇ Green Navigation Buoy



1 inch = 100 feet



NOTES:

THE INFORMATION DEPICTED ON THIS MAP REPRESENTS THE RESULTS OF SURVEYS MADE ON THE DATES INDICATED AND CAN ONLY BE CONSIDERED AS INDICATING THE GENERAL CONDITIONS EXISTING AT THAT TIME.

GRID SYSTEM BASED ON LAMBERT PROJECTION, MICHIGAN STATE PLANE COORDINATE SYSTEM, SOUTH ZONE (2113) 1983 NORTH AMERICAN DATUM, U.S. FOOT.

ALL SOUNDINGS ARE REFERENCED TO I.G.L.D. 1985 FOR LAKE MICHIGAN, ELEVATION 577.5 FT. ABOVE MEAN SEA LEVEL AT RIMOUSKI, QUEBEC. HYDRAULIC CORRECTOR OF 0.3 FT. APPLIED

VERTICAL WATER LEVEL READINGS WERE TAKEN FROM A FIXED GAGE MARK ALONG THE SHEET STEEL WALL NEAR CROSS SECTION 17+50E IN HOLLAND HARBOR, MI.

PROJECT DEPTHS FOR THIS HARBOR RANGE FROM 18.0' TO 23.0'

2010 AERIAL PHOTOGRAPHY DATA SOURCE: USGS

** SHOALEST SOUNDING PER QUARTER PER REACH.



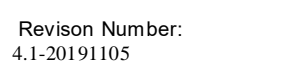
DISCLAIMER: The data represented by the results of data collection is for informational purposes only. The data is not to be used for any purpose other than the intended purpose of the collection. The user is responsible for the results of any application of the data for other than its intended purpose.

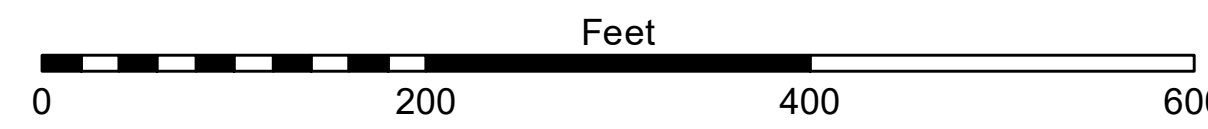
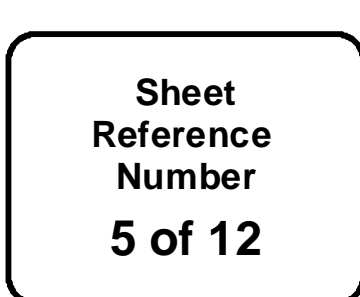
DISCLAIMER: The United States Government furnishes these data and the recipient accepts and uses them with the express understanding that the data are not to be used for any purpose other than the intended purpose of the collection. The user is responsible for the results of any application of the data for other than its intended purpose.

U.S. ARMY CORPS OF ENGINEERS DETROIT DISTRICT		
Submitted:	Surveyed By:	
Recommended:	Plotted By:	
Approved:	Chief, Survey Section	
	Chief, Technical Services	

HOLLAND HARBOR, MI
Holland Harbor
HO_01_LND_20200416_CS
16 April 2020

Sheet
Reference
Number
3 of 12





NOTES:

THE INFORMATION DEPICTED ON THIS MAP REPRESENTS THE RESULTS OF SURVEYS MADE ON THE DATES INDICATED AND CAN ONLY BE CONSIDERED AS INDICATING THE GENERAL CONDITIONS EXISTING AT THAT TIME.

GRID SYSTEM BASED ON LAMBERT PROJECTION, MICHIGAN STATE PLANE COORDINATE SYSTEM, SOUTH ZONE (2:11) 1983 NORTH AMERICAN DATUM, U.S. FOOT.

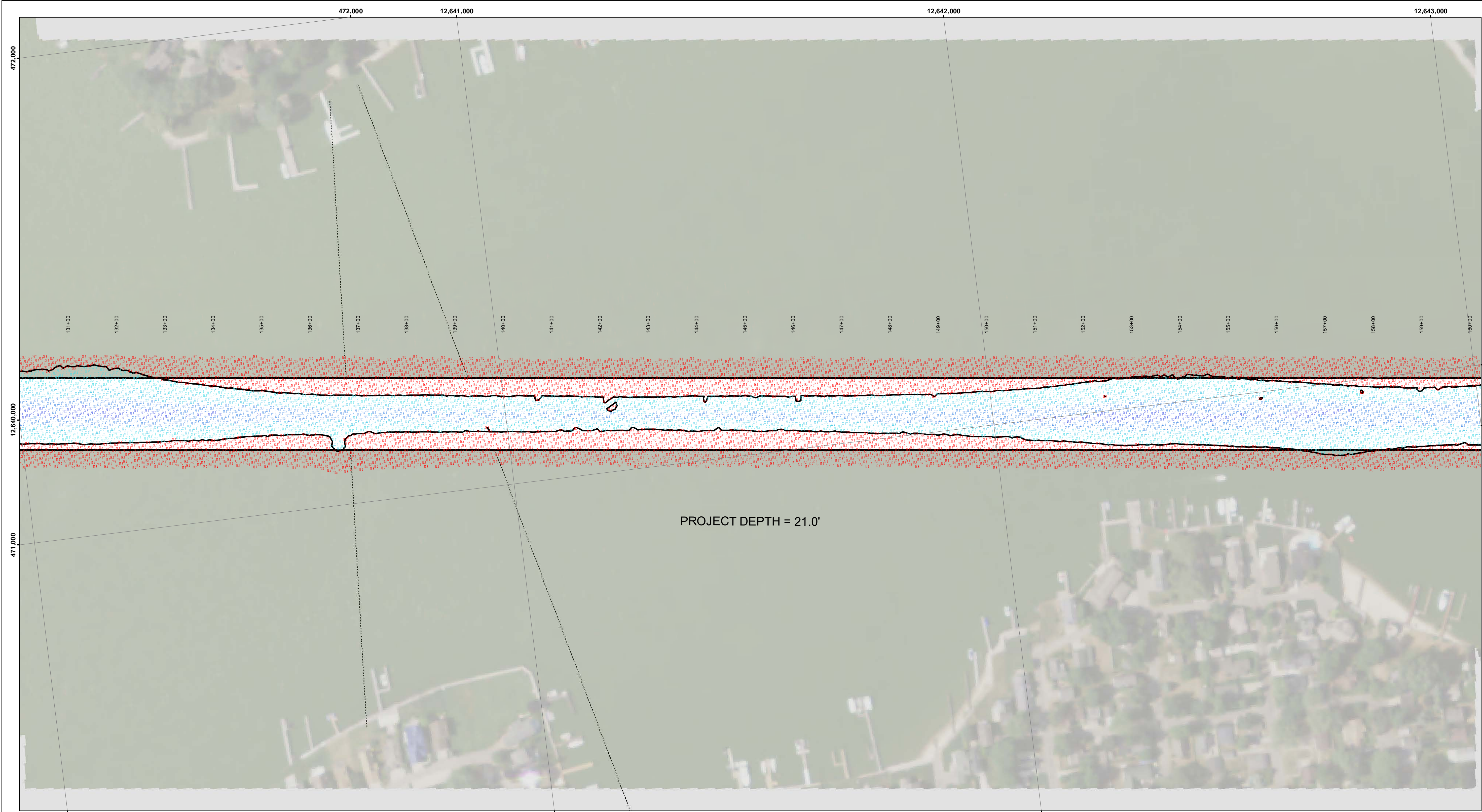
ALL SOUNDINGS ARE REFERENCED TO T.I.G.D. 1985 FOR LAKE MICHIGAN. ELEVATION 57.5 FT. ABOVE MEAN SEA LEVEL AT RIMOUSKI, QUEBEC. HYDRAULIC CORRECTOR OF 0.3 FT. APPLIED.

VERTICAL WATER LEVEL READINGS WERE TAKEN FROM A FIXED GAGE MARK ALONG THE SHARP STEEL WALL NEAR CROSS SECTION 17+50E IN HOLLAND HARBOR, MI.

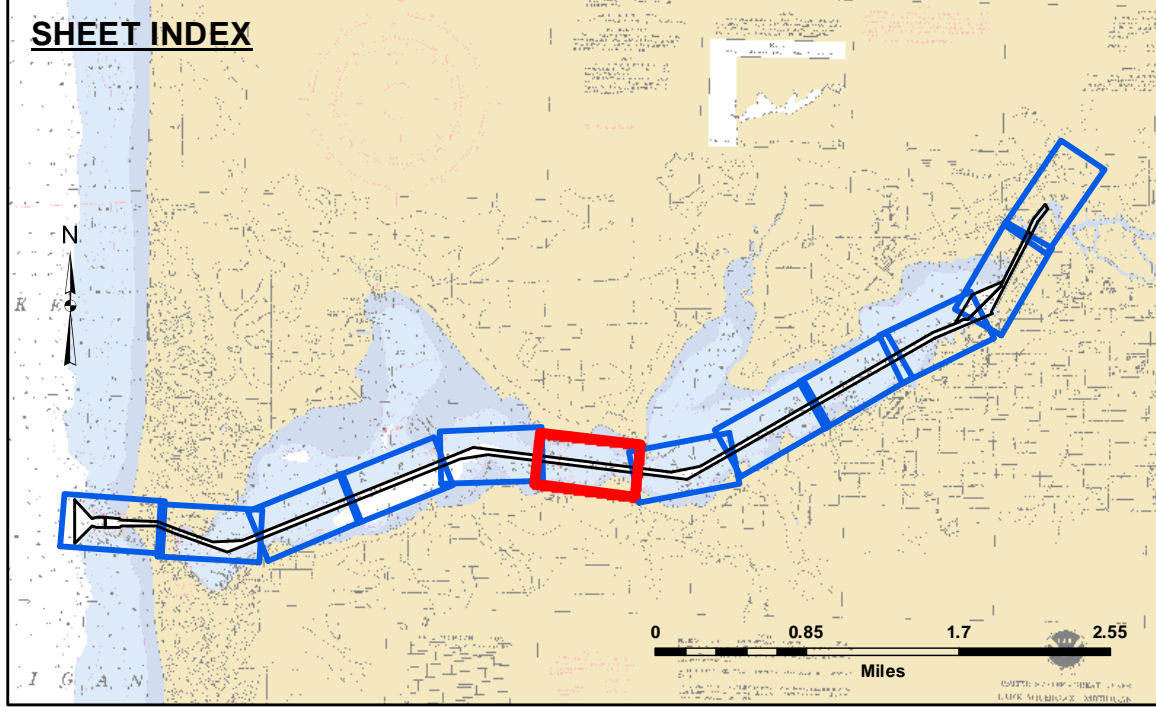
PROJECT DEPTHS FOR THIS HARBOR RANGE FROM 18.0' TO 23.0'

2010 AERIAL PHOTOGRAPHY DATA SOURCE: USGS

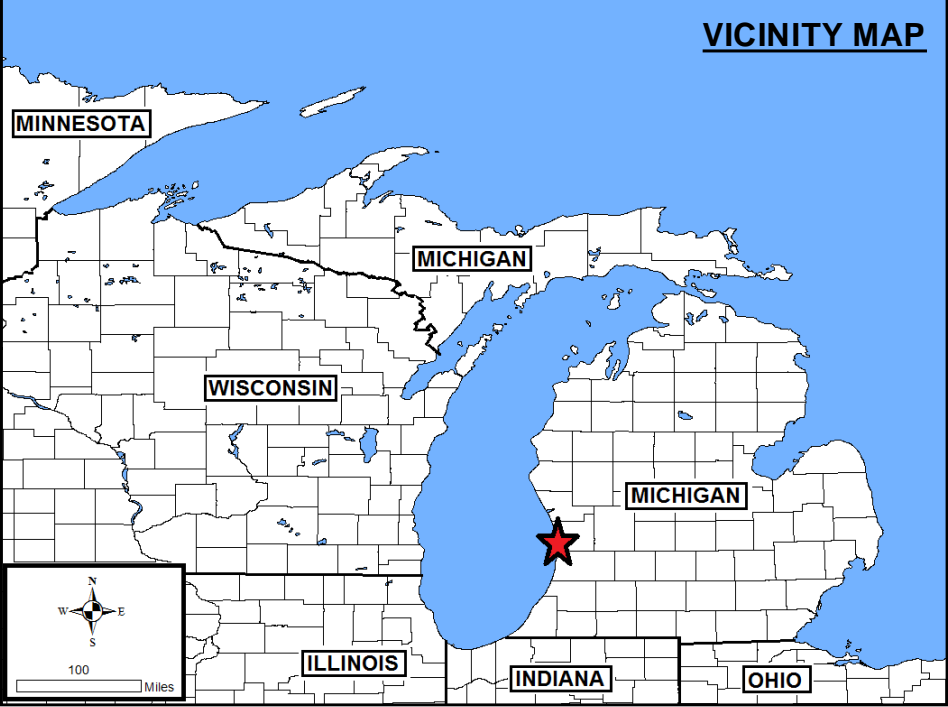
** SHORELEST SOUNDING PER QUARTER PER REACH.



SHEET INDEX

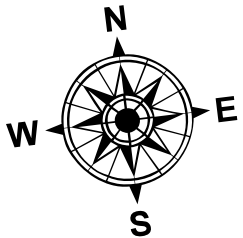


VICINITY MAP

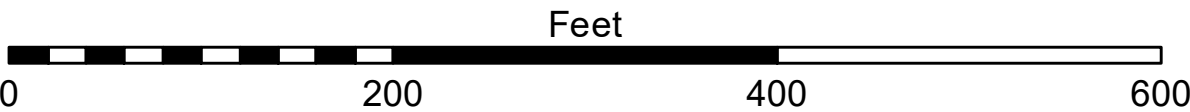


LEGEND

- Federal Navigation Channel
- Federal Navigation Center Line
- Cable Submarine
- - Cable Overhead
- Contour Line
- Placement Area
- Shoaling Area
- Shoalest Sounding**
- ⚓ Beacon, General
- ◆ Red Navigation Buoy
- ◇ Green Navigation Buoy



1 inch = 100 feet



NOTES:

THE INFORMATION DEPICTED ON THIS MAP REPRESENTS THE RESULTS OF SURVEYS MADE ON THE DATES INDICATED AND CAN ONLY BE CONSIDERED AS INDICATING THE GENERAL CONDITIONS EXISTING AT THAT TIME.

GRID SYSTEM BASED ON LAMBERT PROJECTION, MICHIGAN STATE PLANE COORDINATE SYSTEM, SOUTH ZONE (2113) 1983 NORTH AMERICAN DATUM, U.S. FOOT.

ALL SOUNDINGS ARE REFERENCED TO I.G.L.D. 1985 FOR LAKE MICHIGAN, ELEVATION 577.5 FT. ABOVE MEAN SEA LEVEL AT RIMOUSKI, QUEBEC. HYDRAULIC CORRECTOR OF 0.3 FT. APPLIED

VERTICAL WATER LEVEL READINGS WERE TAKEN FROM A FIXED GAGE MARK ALONG THE SHEET STEEL WALL NEAR CROSS SECTION 17+50E IN HOLLAND HARBOR, MI.

PROJECT DEPTHS FOR THIS HARBOR RANGE FROM 18.0' TO 23.0'

2010 AERIAL PHOTOGRAPHY DATA SOURCE: USGS

** SHOALEST SOUNDING PER QUARTER PER REACH.



US Army Corps
of Engineers
District: CELRE

The data is liability. The data represents the results of data collection and is not intended for use in any other manner. Engineers activity and indicates the general existing conditions. The user is responsible for the results of any of the application of the data for other than its intended purpose.

Access Constraints: The United States Government furnishes these data and the recipient accepts and uses them with the express understanding that the data are not to be used for any purpose other than that for which they were provided, and that the data are not to be used for any purpose other than that for which they were provided, and that the data are not to be used for any purpose other than that for which they were provided.

U.S. ARMY CORPS OF ENGINEERS
DETROIT DISTRICT

Submitted:

Surveyed By:

Plotted By:

Recommended:

Chief, Survey Section

Checked By:

Chief, Technical Services

HOLLAND HARBOR, MI

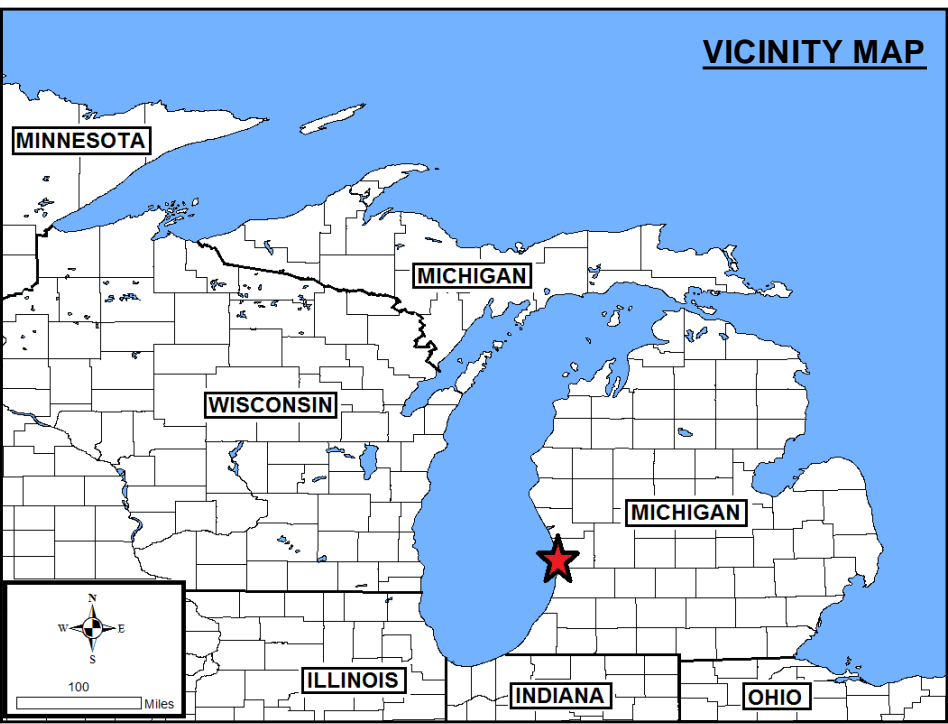
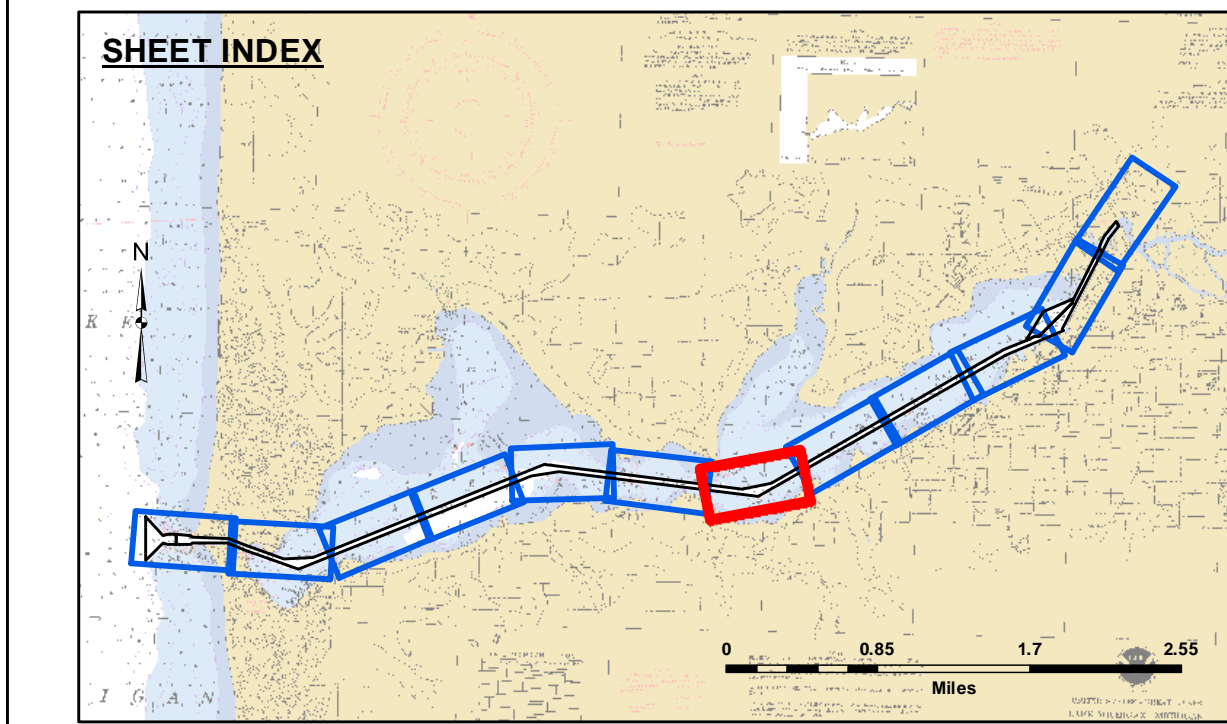
Holland Harbor

HO_01_LND_20200416_CS

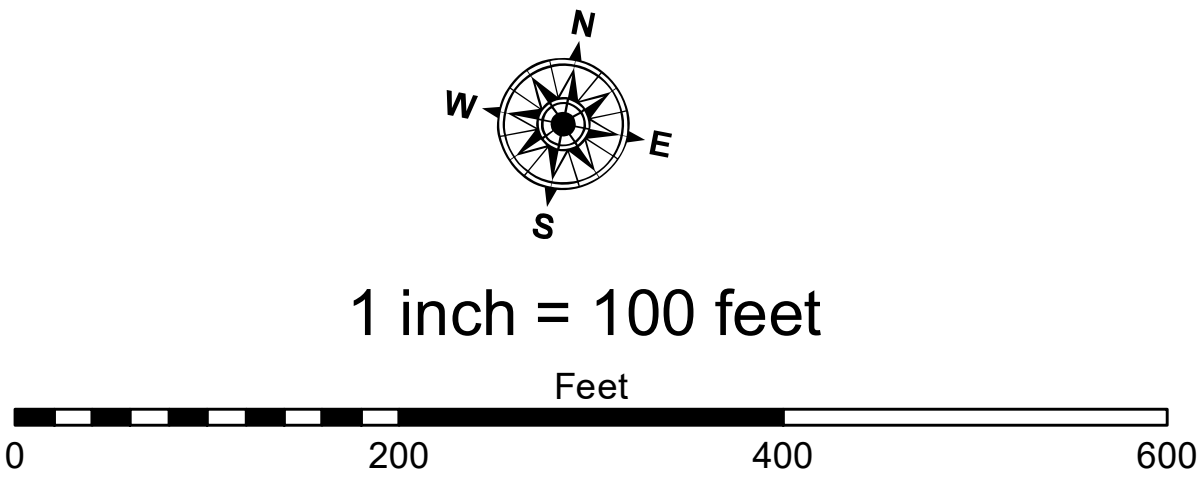
16 April 2020

Sheet
Reference
Number
6 of 12

Revision Number:
4.1-20191105



LEGEND	
	Federal Navigation Channel
	Federal Navigation Center Line
	Cable Submarine
	Cable Overhead
	Contour Line
	Placement Area
	Shoaling Area
	Shoalest Sounding**
	Beacon, General
	Red Navigation Buoy
	Green Navigation Buoy



NOTES:

THE INFORMATION DEPICTED ON THIS MAP REPRESENTS THE RESULTS OF SURVEYS MADE ON THE DATES INDICATED AND CAN ONLY BE CONSIDERED AS INDICATING THE GENERAL CONDITIONS EXISTING AT THAT TIME.

GRID SYSTEM BASED ON LAMBERT PROJECTION, MICHIGAN STATE PLANE COORDINATE SYSTEM, SOUTH ZONE (2113) 1983 NORTH AMERICAN DATUM, U.S. FOOT.

ALL SOUNDINGS ARE REFERENCED TO I.G.L.D. 1985 FOR LAKE MICHIGAN, ELEVATION 577.5 FT. ABOVE MEAN SEA LEVEL AT RIMOUSKI, QUEBEC. HYDRAULIC CORRECTOR OF 0.3 FT. APPLIED

VERTICAL WATER LEVEL READINGS WERE TAKEN FROM A FIXED GAGE MARK ALONG THE SHEET STEEL WALL NEAR CROSS SECTION 17+50E IN HOLLAND HARBOR, MI.

PROJECT DEPTHS FOR THIS HARBOR RANGE FROM 18.0' TO 23.0'

2010 AERIAL PHOTOGRAPHY DATA SOURCE: USGS

** SHOALEST SOUNDING PER QUARTER PER REACH.



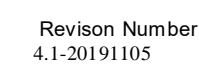
DISCLAIMER: The data represented by the results of data collection is provided for informational purposes only. The Corps of Engineers activity and indicates the general existing conditions. The user is responsible for the results of the data for other than its intended purpose.

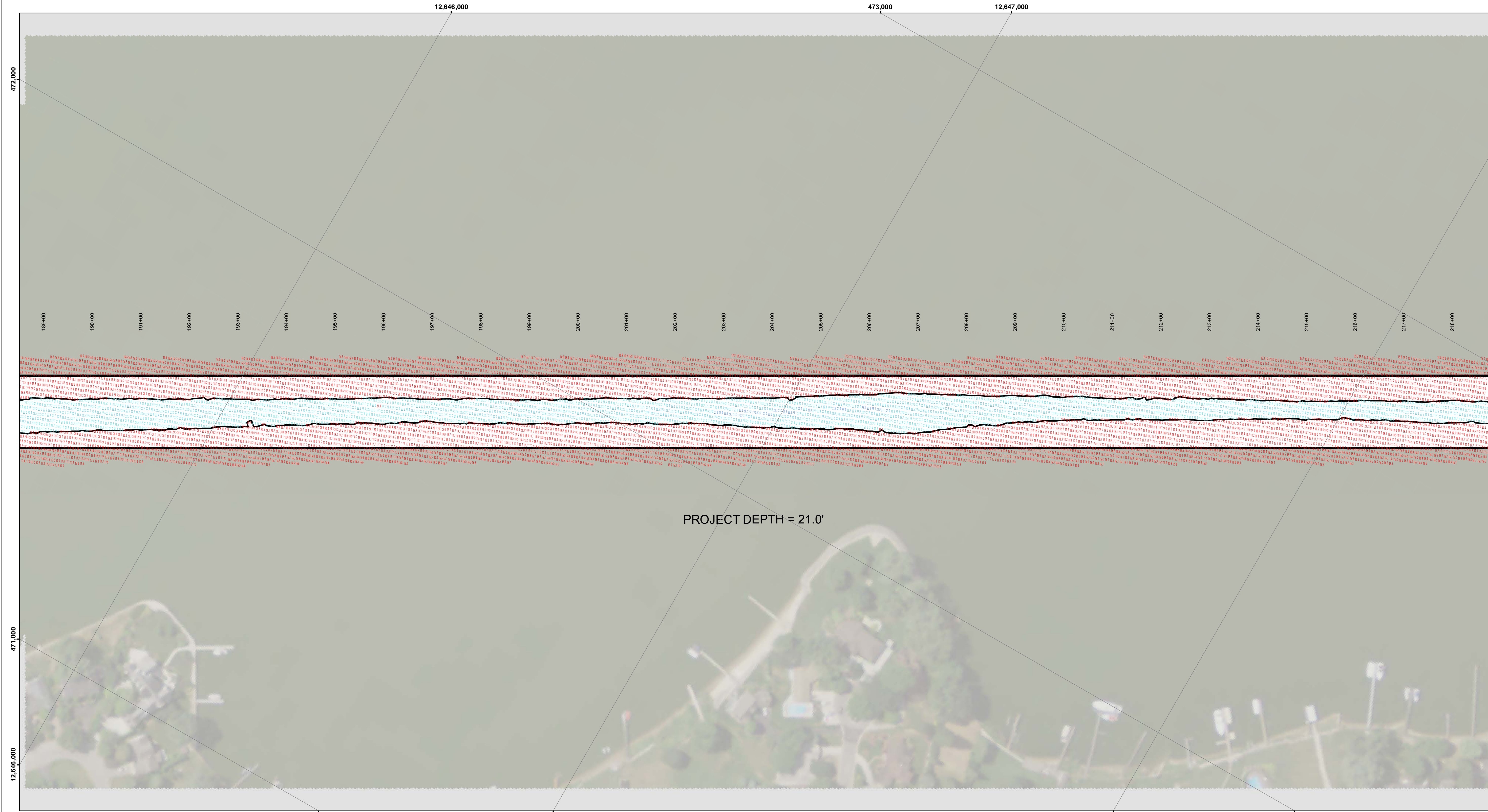
ACCESS: The United States Government furnishes these data and the recipient accepts and uses them with the express understanding that the data are not to be used for any purpose other than that for which they were originally collected, expressed, or implied concerning the accuracy, completeness, readability, usability or suitability for any particular purpose of the user. The recipient agrees to hold the Government harmless from any and all claims, damages, losses, or expenses, including reasonable attorneys' fees, that may be incurred by the Government or any other person by reason of any use of the data other than that for which they were originally collected, expressed, or implied. The recipient may not transfer these data to others without also transferring this Disclaimer.

U.S. ARMY CORPS OF ENGINEERS DETROIT DISTRICT	
Submitted:	Surveyed By:
Recommended:	Plotted By:
Approved:	Checked By:
Chief, Survey Section	
Chief, Technical Services	

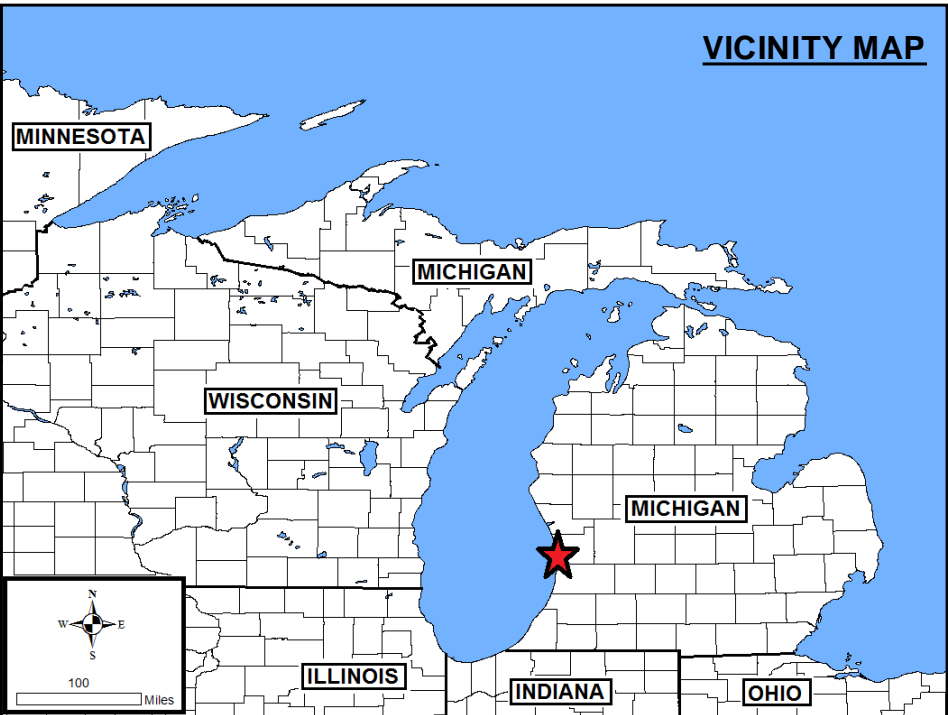
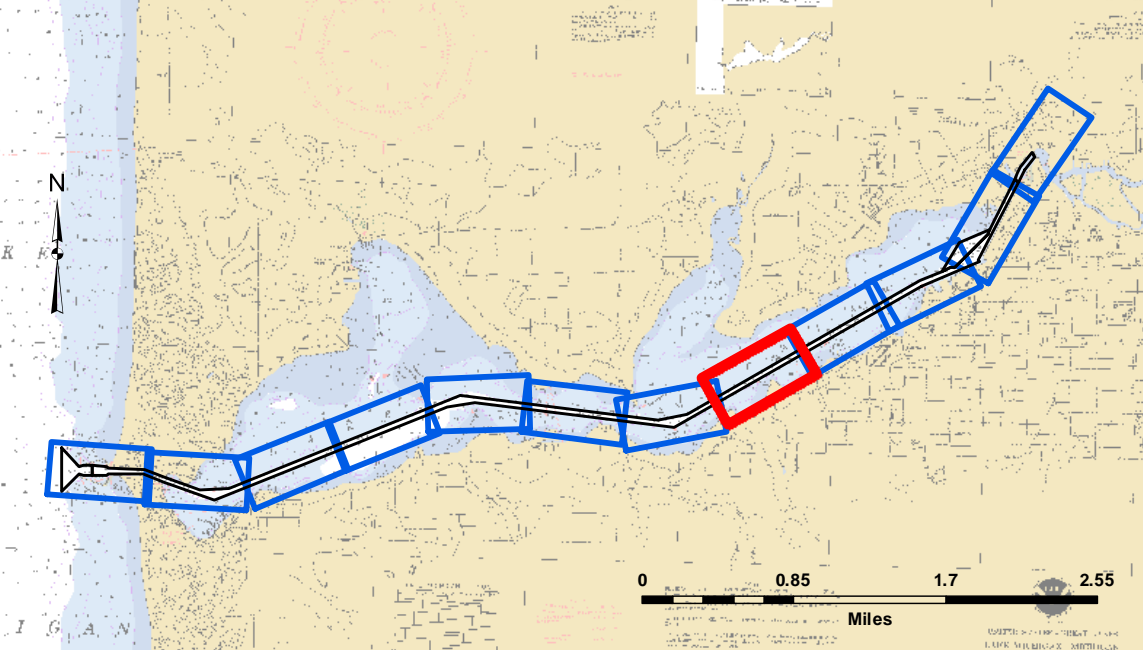
HOLLAND HARBOR, MI
Holland Harbor
HO_01_LND_20200416_CS
16 April 2020

Sheet
Reference
Number
7 of 12



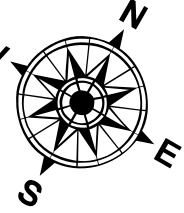


SHEET INDEX



LEGEND

- Federal Navigation Channel
- Federal Navigation Center Line
- Cable Submarine
- - Cable Overhead
- Contour Line
- Placement Area
- Shoaling Area
- Shoalest Sounding**
- ⚓ Beacon, General
- ◆ Red Navigation Buoy
- ◇ Green Navigation Buoy



1 inch = 100 feet



NOTES:

THE INFORMATION DEPICTED ON THIS MAP REPRESENTS THE RESULTS OF SURVEYS MADE ON THE DATES INDICATED AND CAN ONLY BE CONSIDERED AS INDICATING THE GENERAL CONDITIONS EXISTING AT THAT TIME.

GRID SYSTEM BASED ON LAMBERT PROJECTION, MICHIGAN STATE PLANE COORDINATE SYSTEM, SOUTH ZONE (2113) 1983 NORTH AMERICAN DATUM, U.S. FOOT.

ALL SOUNDINGS ARE REFERENCED TO I.G.L.D. 1985 FOR LAKE MICHIGAN, ELEVATION 577.5 FT. ABOVE MEAN SEA LEVEL AT RIMOUSKI, QUEBEC. HYDRAULIC CORRECTOR OF 0.3 FT. APPLIED

VERTICAL WATER LEVEL READINGS WERE TAKEN FROM A FIXED GAGE MARK ALONG THE SHEET STEEL WALL NEAR CROSS SECTION 17+50E IN HOLLAND HARBOR, MI.

PROJECT DEPTHS FOR THIS HARBOR RANGE FROM 18.0' TO 23.0'

2010 AERIAL PHOTOGRAPHY DATA SOURCE: USGS

** SHOALEST SOUNDING PER QUARTER PER REACH.



The data on this map represents the results of data collection and processing for a specific project. The Corps of Engineers actively and continuously maintains the accuracy of its data. The user is responsible for the results of any of the application of the data for other than its intended purpose.

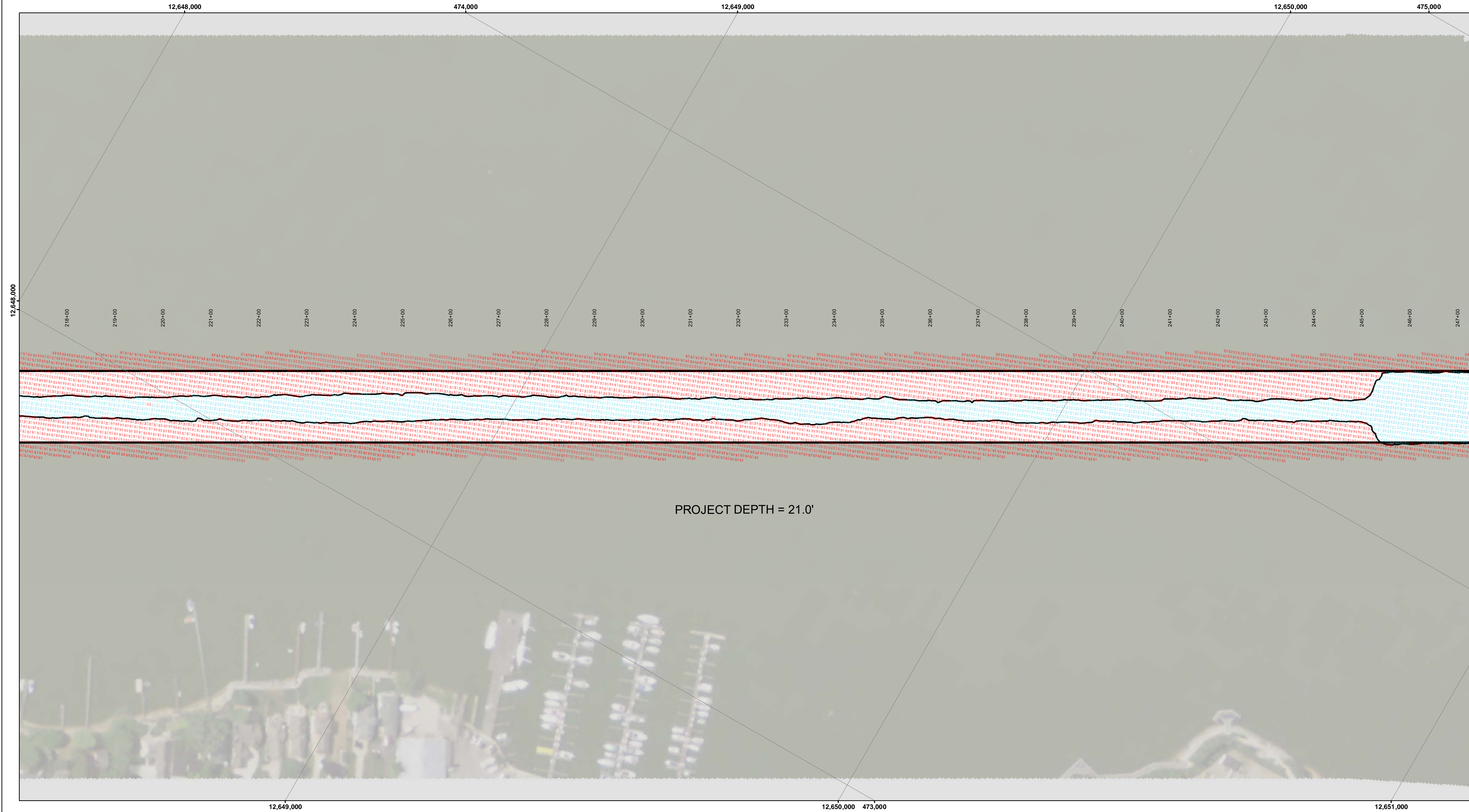
These data and the recipient accepts and uses them with the express understanding that the Corps of Engineers does not warrant the readability, usability or suitability for any particular purpose of the data. The Corps of Engineers does not assume any liability under the law, whether to any person by reason of any use made thereof. These data belong to the Government. The recipient may not transfer these data to others without also transferring this Disclaimer.

U.S. ARMY CORPS OF ENGINEERS DETROIT DISTRICT	
Submitted:	Surveyed By:
Recommended:	Plotted By:
Approved:	Checked By:
Chief, Survey Section	
Chief, Technical Services	

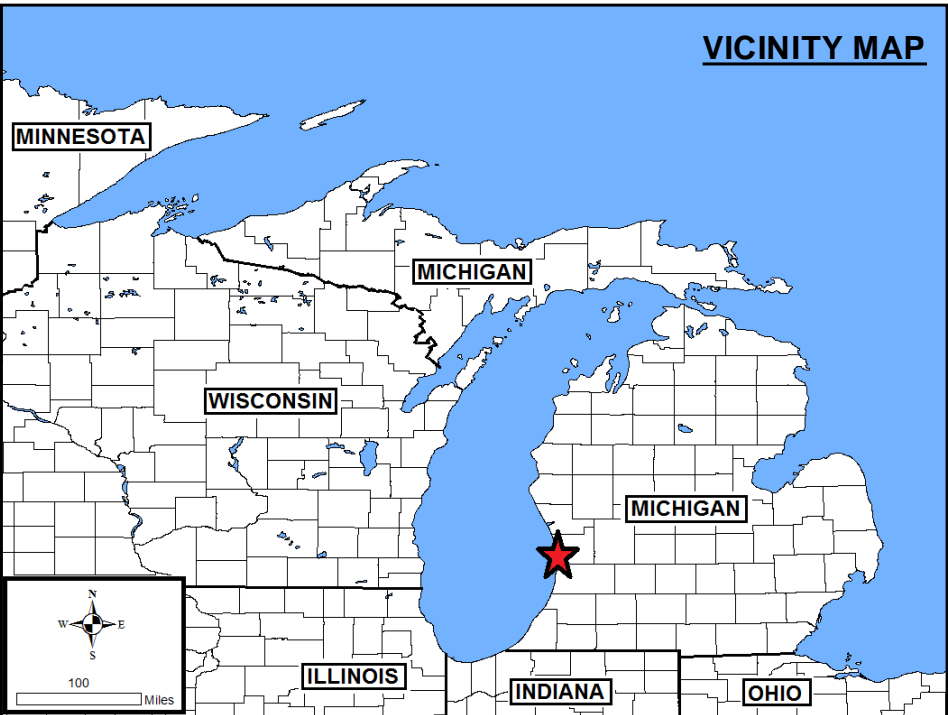
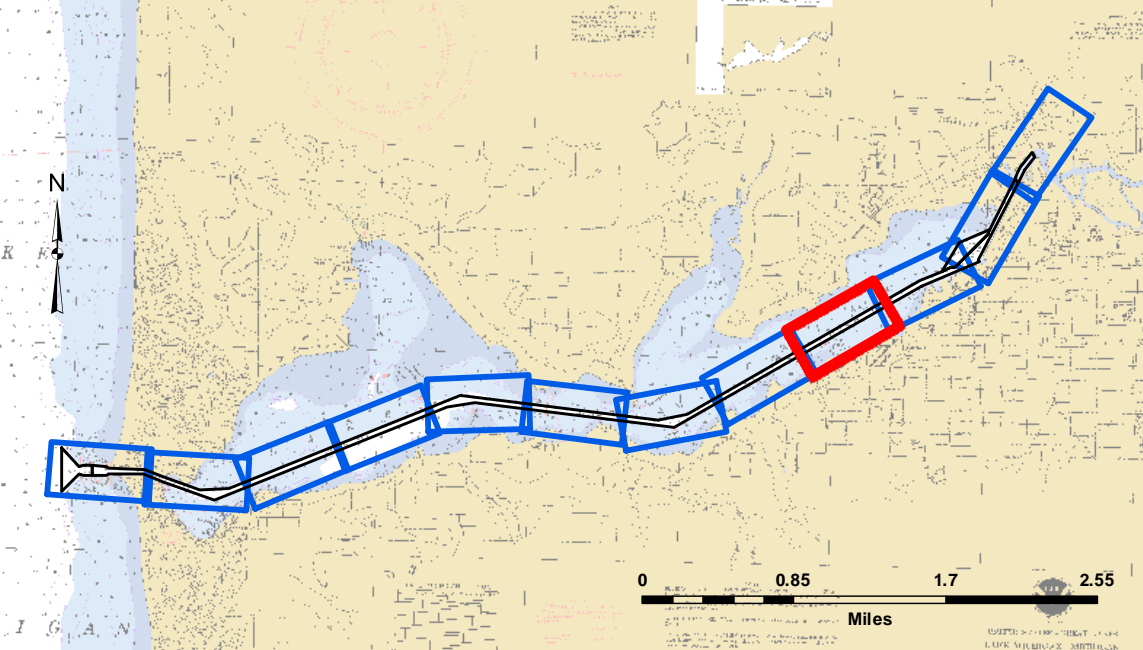
HOLLAND HARBOR, MI
Holland Harbor
HO_01_LND_20200422_CS
22 April 2020

Sheet
Reference
Number
8 of 12

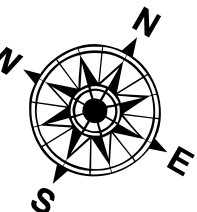
Revision Number:
4.1-20191105



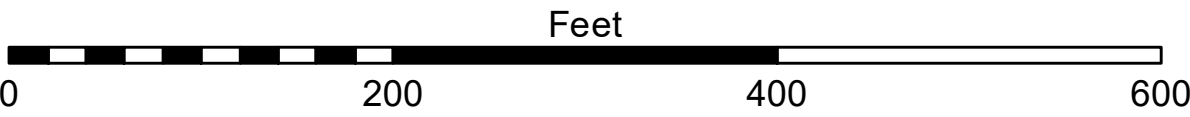
SHEET INDEX



LEGEND	
	Federal Navigation Channel
	Federal Navigation Center Line
	Cable Submarine
	Cable Overhead
	Contour Line
	Placement Area
	Shoaling Area
	Shoalest Sounding**
	Beacon, General
	Red Navigation Buoy
	Green Navigation Buoy



1 inch = 100 feet



NOTES:

THE INFORMATION DEPICTED ON THIS MAP REPRESENTS THE RESULTS OF SURVEYS MADE ON THE DATES INDICATED AND CAN ONLY BE CONSIDERED AS INDICATING THE GENERAL CONDITIONS EXISTING AT THAT TIME.

GRID SYSTEM BASED ON LAMBERT PROJECTION, MICHIGAN STATE PLANE COORDINATE SYSTEM, SOUTH ZONE (2113) 1983 NORTH AMERICAN DATUM, U.S. FOOT.

ALL SOUNDINGS ARE REFERENCED TO I.G.L.D. 1985 FOR LAKE MICHIGAN, ELEVATION 577.5 FT. ABOVE MEAN SEA LEVEL AT RIMOUSKI, QUEBEC. HYDRAULIC CORRECTOR OF 0.3 FT. APPLIED

VERTICAL WATER LEVEL READINGS WERE TAKEN FROM A FIXED GAGE MARK ALONG THE SHEET STEEL WALL NEAR CROSS SECTION 17+50E IN HOLLAND HARBOR, MI.

PROJECT DEPTHS FOR THIS HARBOR RANGE FROM 18.0' TO 23.0'

2010 AERIAL PHOTOGRAPHY DATA SOURCE: USGS

** SHOALEST SOUNDING PER QUARTER PER REACH.

U.S. ARMY CORPS OF ENGINEERS DETROIT DISTRICT	
Submitted: _____	Surveyed By: _____
Recommended: Chief, Survey Section	Plotted By: _____
Approved: _____	Checked By: _____

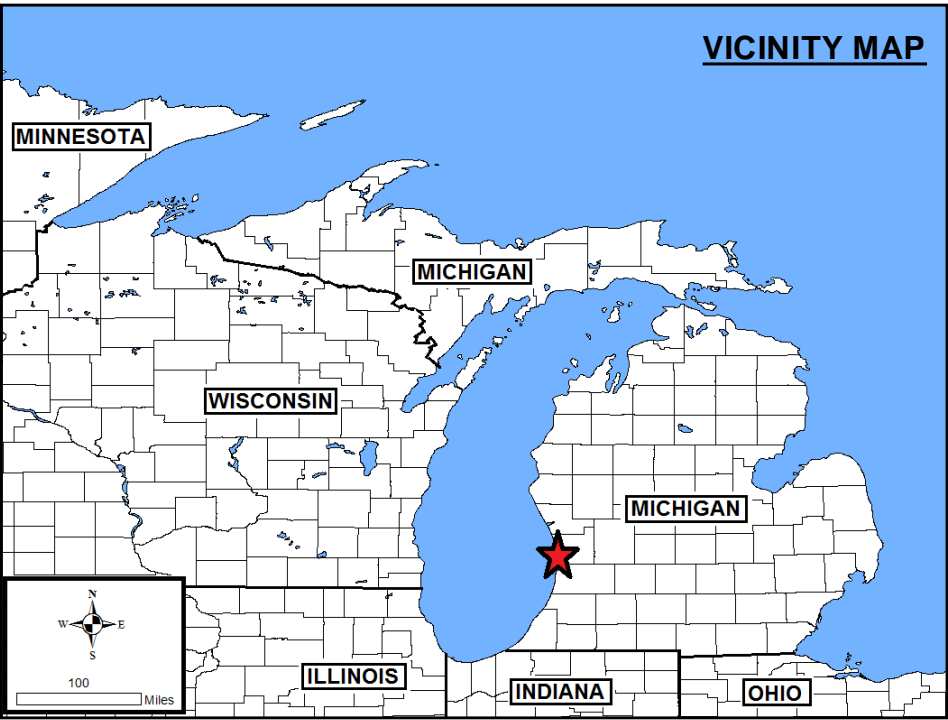
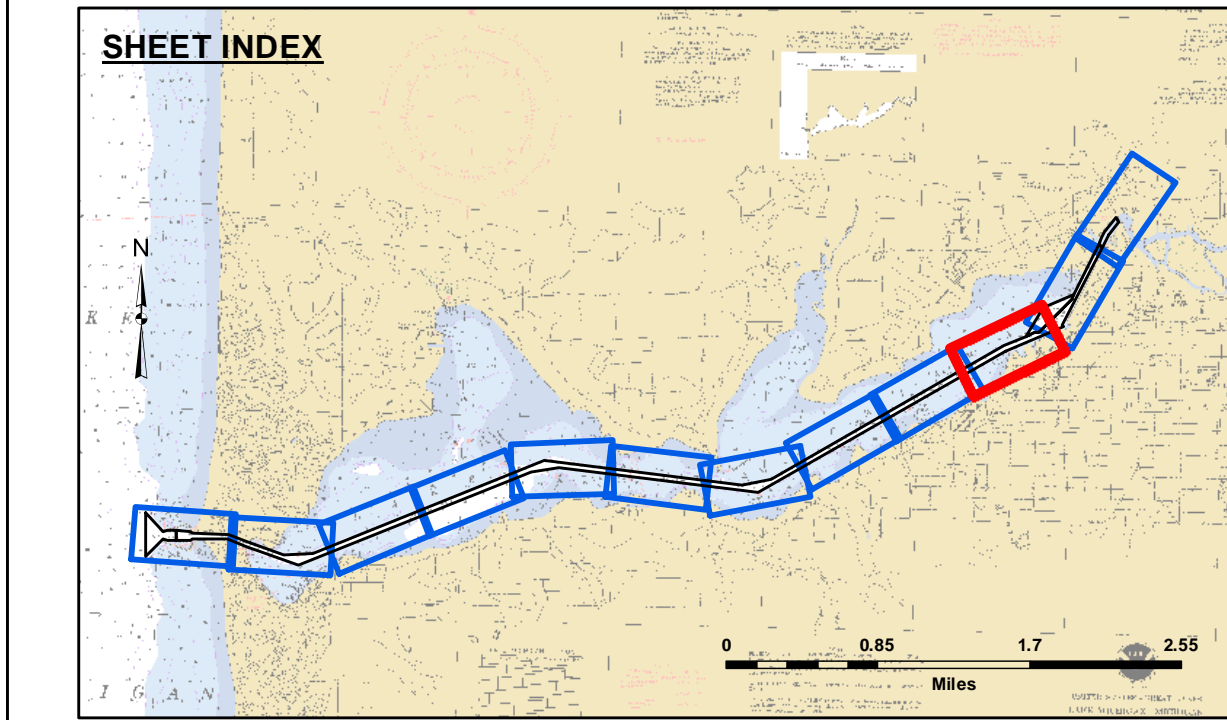
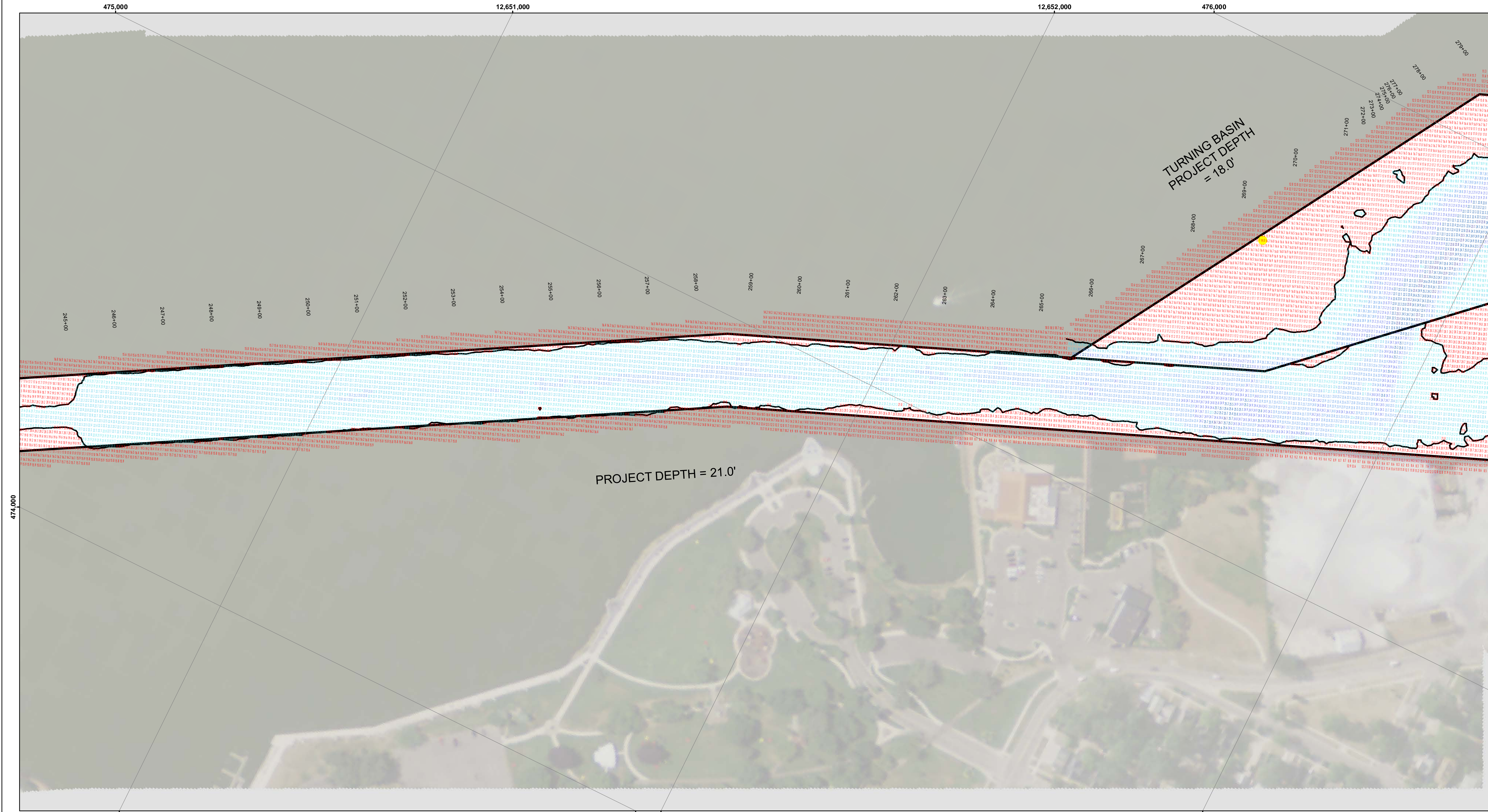
HOLLAND HARBOR, MI Holland Harbor HO_01_LND_20200422_CS 22 April 2020
--

Sheet Reference Number 9 of 12

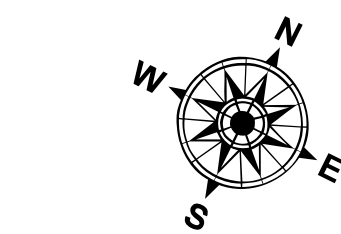


The data on this map represents the results of data collection and processing for a specific project. The U.S. Army Corps of Engineers actively and continuously monitors the general existing conditions of the project area and updates the data as needed. The user is responsible for the accuracy, completeness, and reliability of the data for the intended purpose of the application of the data for other than its intended purpose. The user is responsible for the accuracy, completeness, and reliability of the data for the intended purpose of the application of the data for other than its intended purpose.

Access Constraints: The United States Government furnishes these data and the recipient accepts and uses them with the express understanding that the data are not to be used for any purpose other than that for which they were provided. The recipient may not transfer these data to others without also transferring this Disclaimer.



- LEGEND**
- Federal Navigation Channel
 - Federal Navigation Center Line
 - Cable Submarine
 - - Cable Overhead
 - Contour Line
 - Placement Area
 - Shoaling Area
 - Shoalest Sounding**
 - ⚓ Beacon, General
 - ◆ Red Navigation Buoy
 - ◇ Green Navigation Buoy



1 inch = 100 feet



NOTES:

THE INFORMATION DEPICTED ON THIS MAP REPRESENTS THE RESULTS OF SURVEYS MADE ON THE DATES INDICATED AND CAN ONLY BE CONSIDERED AS INDICATING THE GENERAL CONDITIONS EXISTING AT THAT TIME.

GRID SYSTEM BASED ON LAMBERT PROJECTION, MICHIGAN STATE PLANE COORDINATE SYSTEM, SOUTH ZONE (2113) 1983 NORTH AMERICAN DATUM, U.S. FOOT.

ALL SOUNDINGS ARE REFERENCED TO I.G.L.D. 1985 FOR LAKE MICHIGAN, ELEVATION 577.5 FT. ABOVE MEAN SEA LEVEL AT RIMOUSKI, QUEBEC. HYDRAULIC CORRECTOR OF 0.3 FT. APPLIED

VERTICAL WATER LEVEL READINGS WERE TAKEN FROM A FIXED GAGE MARK ALONG THE SHEET STEEL WALL NEAR CROSS SECTION 17+50E IN HOLLAND HARBOR, MI.

PROJECT DEPTHS FOR THIS HARBOR RANGE FROM 18.0' TO 23.0'

2010 AERIAL PHOTOGRAPHY DATA SOURCE: USGS

** SHOALEST SOUNDING PER QUARTER PER REACH.



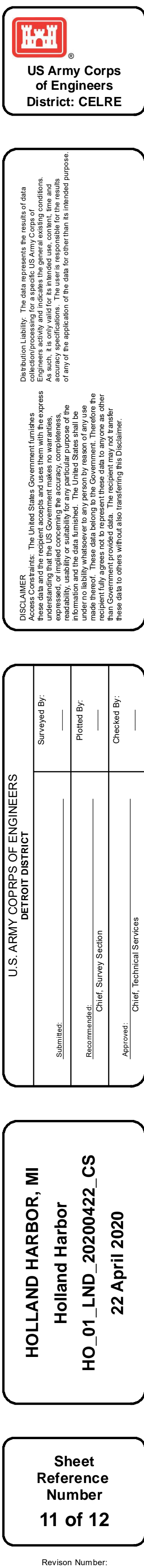
DISCLAIMER: The data represents the results of data collection and processing for a specific US Army Corps of Engineers activity and indicates the general existing conditions. The data is not intended to be used for any purpose other than its intended purpose. The user is responsible for the results of any application of the data for other than its intended purpose.

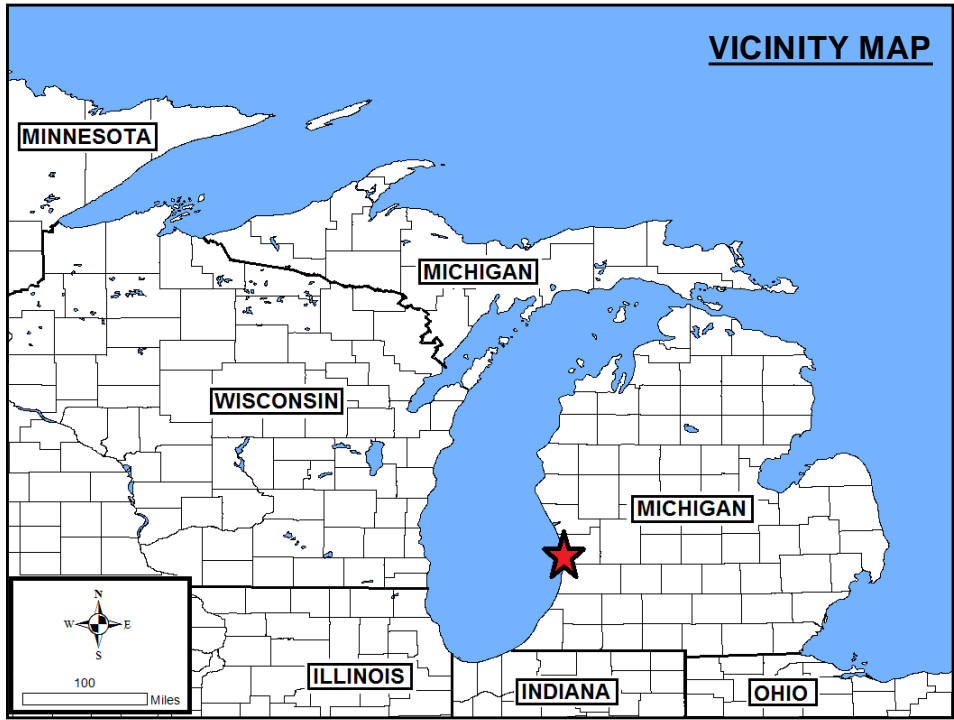
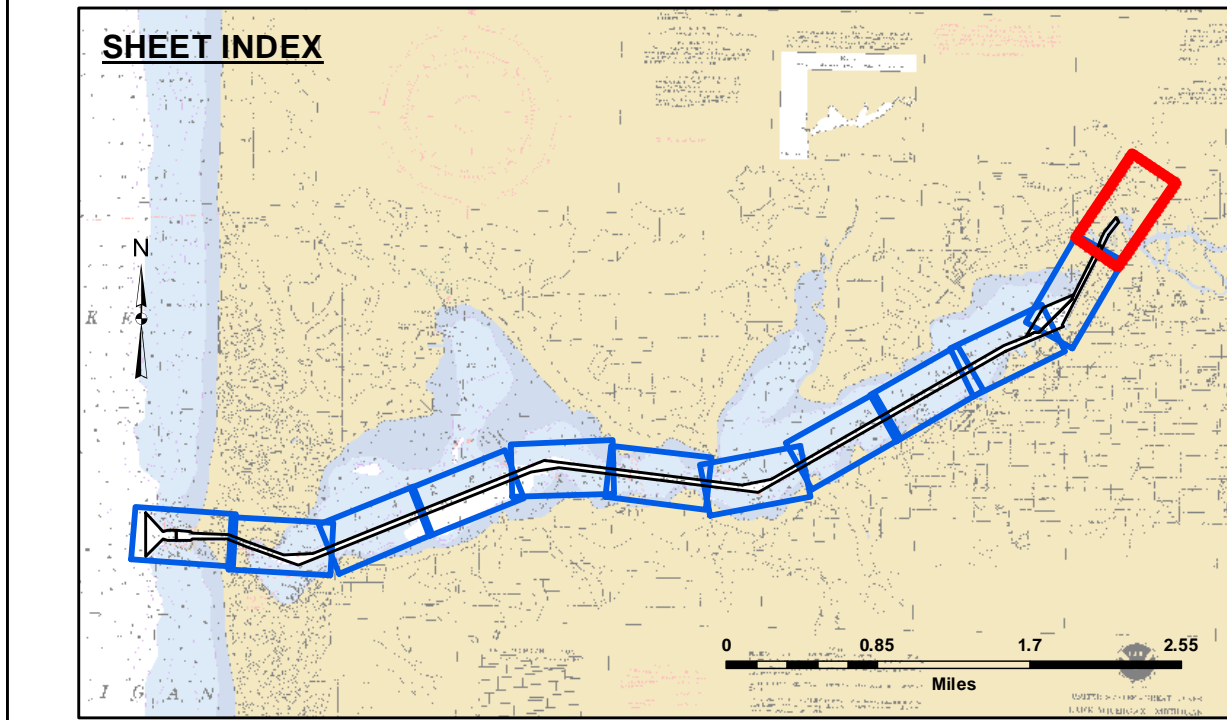
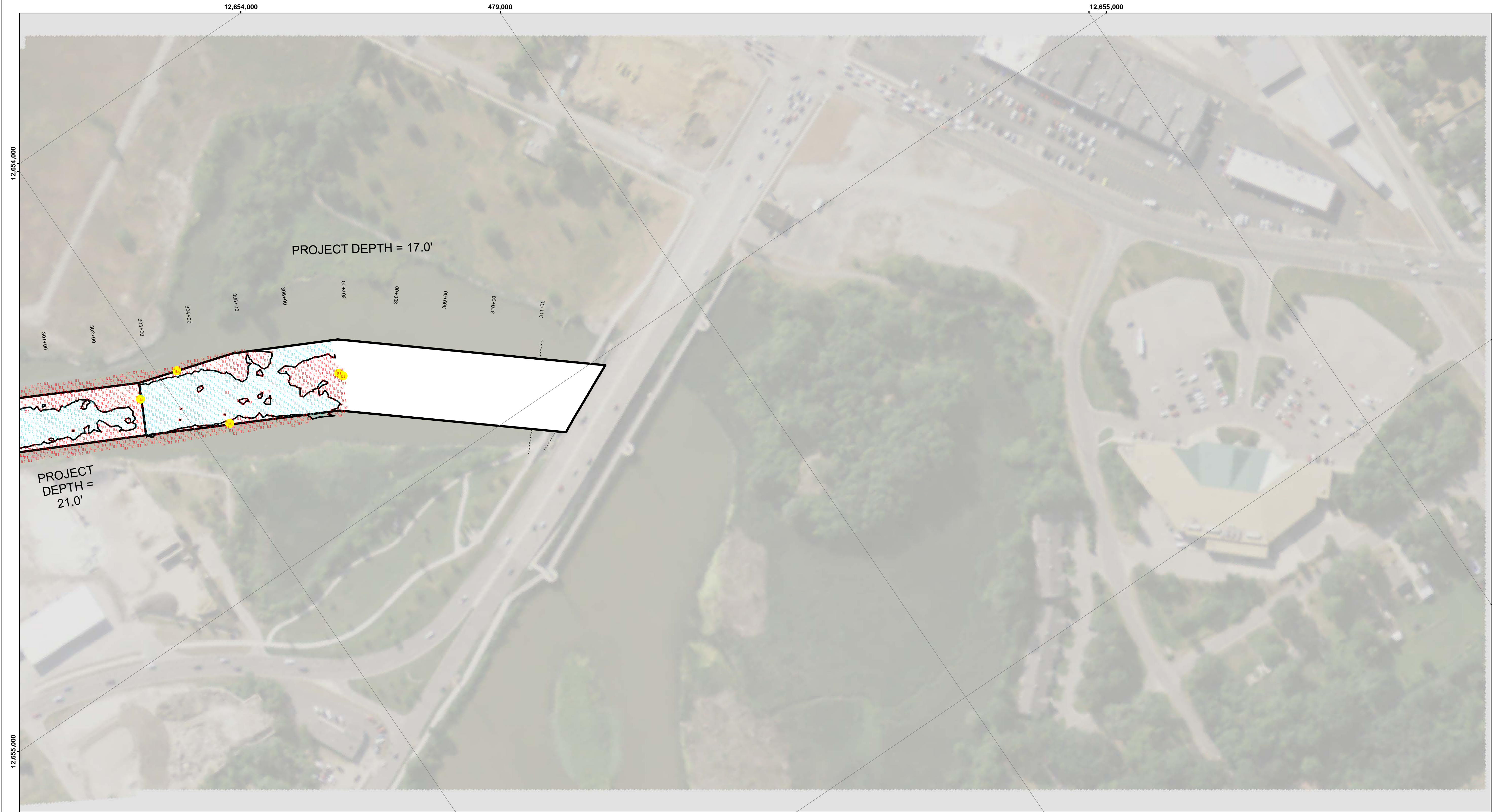
DISCLAIMER: The United States Government (hereinafter "the Government") does not warrant, endorse, or guarantee the accuracy, completeness, or reliability of the data. The data is provided "as is" and the user assumes all responsibility for its use. The data is not to be used for any purpose other than its intended purpose. The data is not to be used for any purpose other than its intended purpose.

U.S. ARMY CORPS OF ENGINEERS DETROIT DISTRICT	
Submitted:	Surveyed By:
Recommended:	Plotted By:
Approved:	Checked By:
Chief, Survey Section	
Chief, Technical Services	

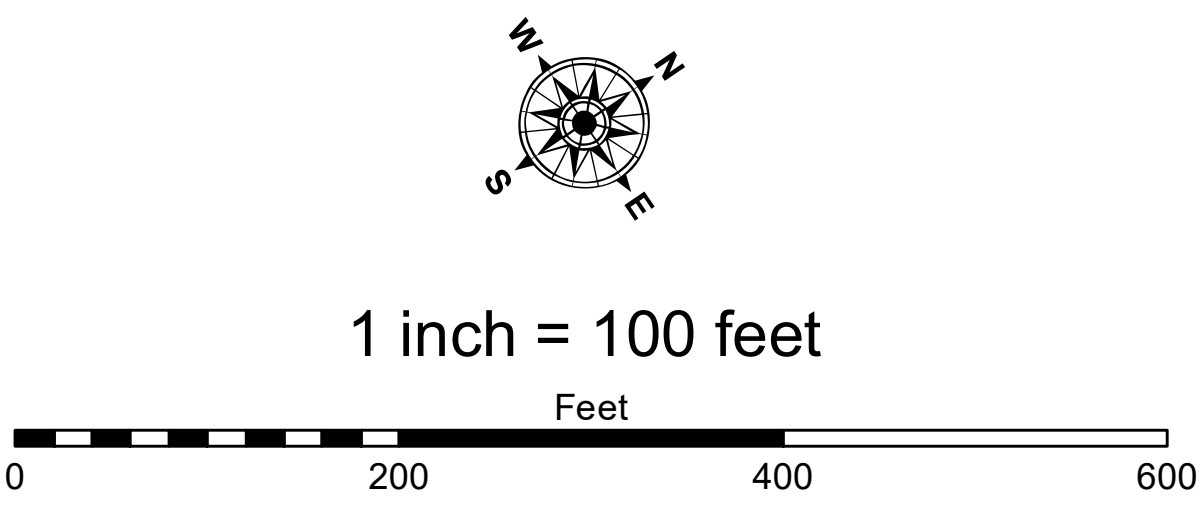
HOLLAND HARBOR, MI
Holland Harbor
HO_01_LND_20200422_CS
22 April 2020

Sheet Reference Number
10 of 12





- LEGEND**
- Federal Navigation Channel
 - Federal Navigation Center Line
 - Cable Submarine
 - - Cable Overhead
 - Contour Line
 - Placement Area
 - Shoaling Area
 - Shoalest Sounding**
 - ⚓ Beacon, General
 - ♦ Red Navigation Buoy
 - ◇ Green Navigation Buoy



NOTES:

THE INFORMATION DEPICTED ON THIS MAP REPRESENTS THE RESULTS OF SURVEYS MADE ON THE DATES INDICATED AND CAN ONLY BE CONSIDERED AS INDICATING THE GENERAL CONDITIONS EXISTING AT THAT TIME.

GRID SYSTEM BASED ON LAMBERT PROJECTION, MICHIGAN STATE PLANE COORDINATE SYSTEM, SOUTH ZONE (2113) 1983 NORTH AMERICAN DATUM, U.S. FOOT.

ALL SOUNDINGS ARE REFERENCED TO I.G.L.D. 1985 FOR LAKE MICHIGAN, ELEVATION 577.5 FT. ABOVE MEAN SEA LEVEL AT RIMOUSKI, QUEBEC. HYDRAULIC CORRECTOR OF 0.3 FT. APPLIED

VERTICAL WATER LEVEL READINGS WERE TAKEN FROM A FIXED GAGE MARK ALONG THE SHEET STEEL WALL NEAR CROSS SECTION 17+50E IN HOLLAND HARBOR, MI.

PROJECT DEPTHS FOR THIS HARBOR RANGE FROM 18.0' TO 23.0'

2010 AERIAL PHOTOGRAPHY DATA SOURCE: USGS

** SHOALEST SOUNDING PER QUARTER PER REACH.



DISCLAIMER: The data represented by the results of data collection is provided for informational purposes only. The data is not intended for use in any other manner. The user is responsible for the results of any application of the data for other than its intended purpose.

ACCESS RESTRICTIONS: The United States Government furnishes these data and the recipient accepts and uses them with the express understanding that the data are not to be used for any purpose other than that for which they were provided. The data are not to be used for any purpose other than that for which they were provided. The data are not to be used for any purpose other than that for which they were provided.

U.S. ARMY CORPS OF ENGINEERS DETROIT DISTRICT		
Submitted:	Surveyed By:	
Recommended:	Plotted By:	
Approved:	Checked By:	

HOLLAND HARBOR, MI
Holland Harbor
HO_01_LND_20200422_CS
22 April 2020

Sheet Reference Number
12 of 12