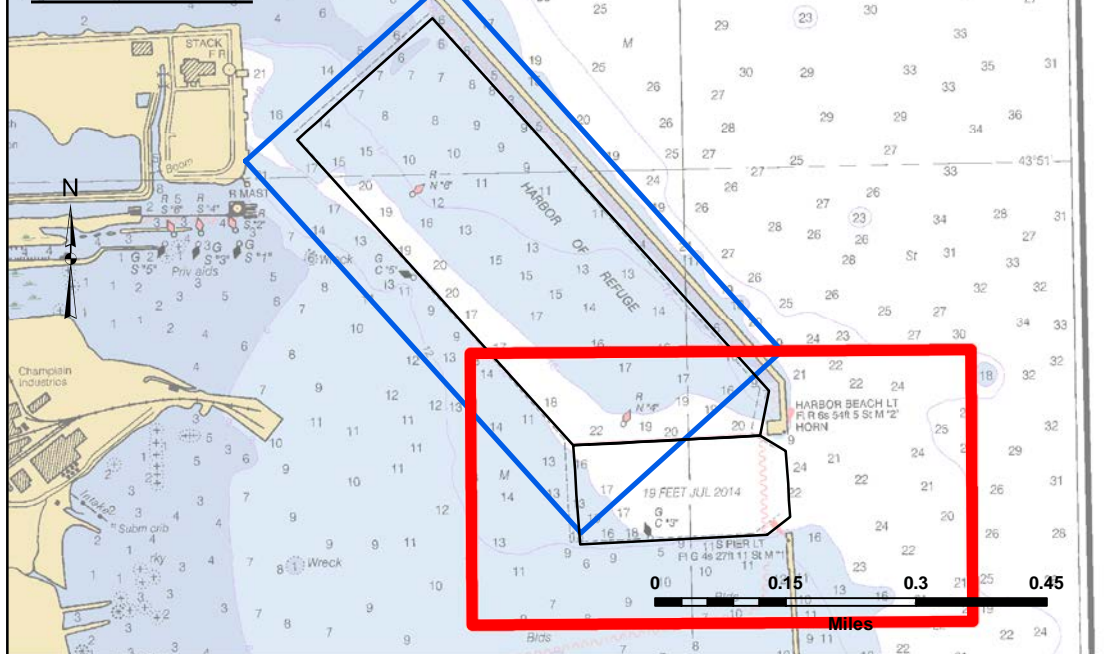


SHEET INDEX



VICINITY MAP

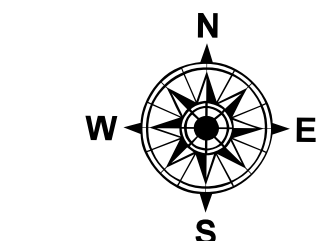


LEGEND

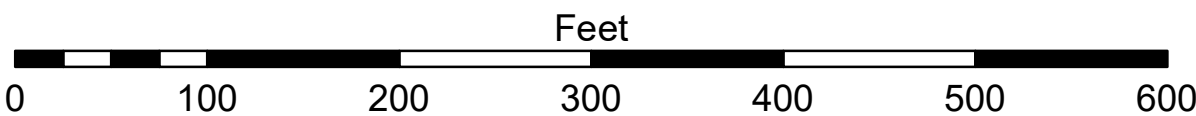
- Cable Submarine
- - Cable Overhead
- Placement Area
- Beacon, General
- Contour Lines
- Channel_Limits

SOUNDING LEGEND

- LESS THAN PROJECT DEPTH
- PROJECT DEPTH
- PROJECT DEPTH +1'
- PROJECT DEPTH +2'
- PROJECT DEPTH +3'
- PROJECT DEPTH +4'
- PROJECT DEPTH +5'



1 inch = 100 feet



NOTES:

THE SOUNDINGS AND ASSOCIATED INFORMATION REPRESENTED HEREIN ARE THE RESULT OF SURVEYS MADE ON THE DATE AS INDICATED AND CAN ONLY BE CONSIDERED REPRESENTATIVE OF THE GENERAL CONDITIONS EXISTING AT THE TIME OF SURVEY.

THE SOUNDINGS DEPICTED HEREIN ARE EXPRESSED IN U.S. SURVEY FEET AND TENTHS THEREOF AND ARE REFERENCED TO THE FOLLOWING DATUMS:
HORIZONTAL: MICHIGAN STATE PLANE COORDINATE SYSTEM, MICHIGAN SOUTH ZONE #2113, NORTH AMERICAN DATUM (NAD) OF 1983.
VERTICAL: INTERNATIONAL GREAT LAKES DATUM (IGLD) OF 1985.

THE ABOVE SURVEY WAS CONDUCTED USING THE U.S.A.C.E. SURVEY VESSEL LAUNCH 3053 EMPLOYING THE FOLLOWING COMPONENTS:

POSITIONING: APPLANIX POS-MV4 W/DGPS
MOTION COMPENSATION: APPLANIX POS-MV4
SONAR: ODOM CV-300
SOFTWARE: HYPACK 2015

WATER LEVELS WERE OBTAINED FROM THE NOAA TIDE GAGE "HARBOR BEACH" (#9075014) AND REFERENCED TO IGLD 85.

PROJECT DEPTHS FOR THIS HARBOR RANGE FROM 23.0' TO 21.0'

AERIAL PHOTOGRAPHY DATA SOURCE: ESRI

HARBOR BEACH, MI
Harbor Beach
HB_01_BCH_20230815_CS
15 August 2023

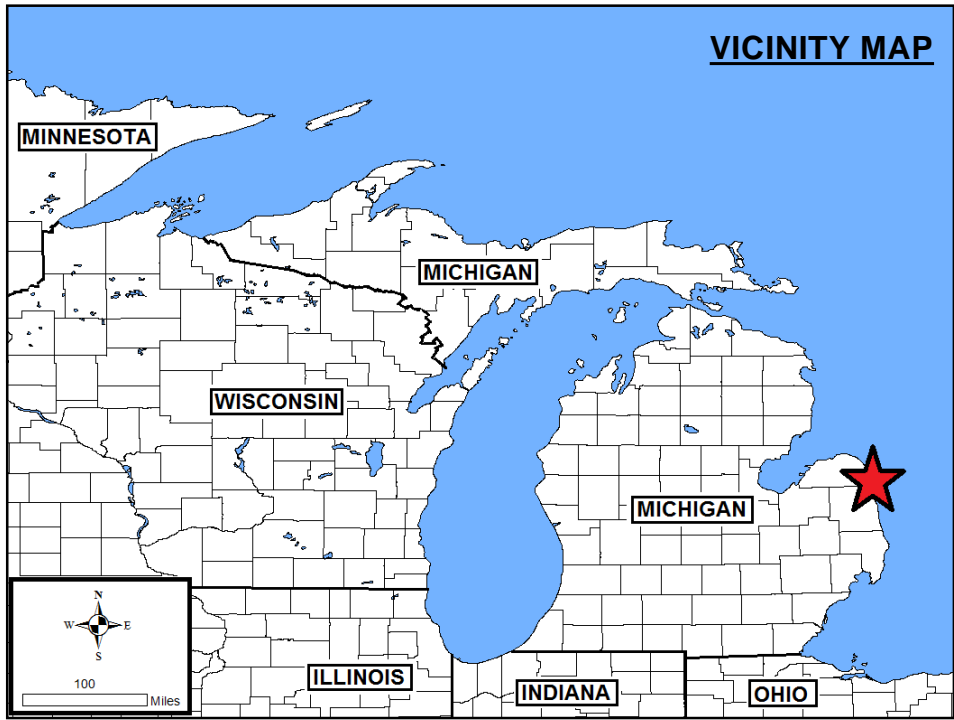
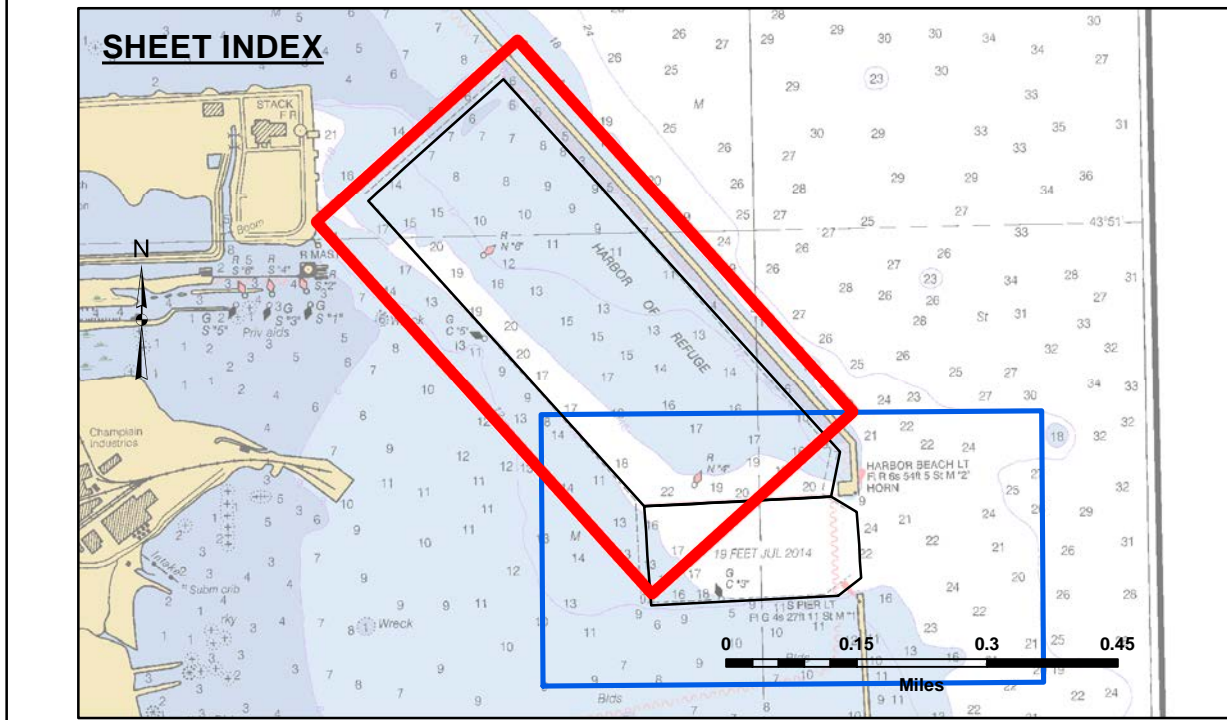
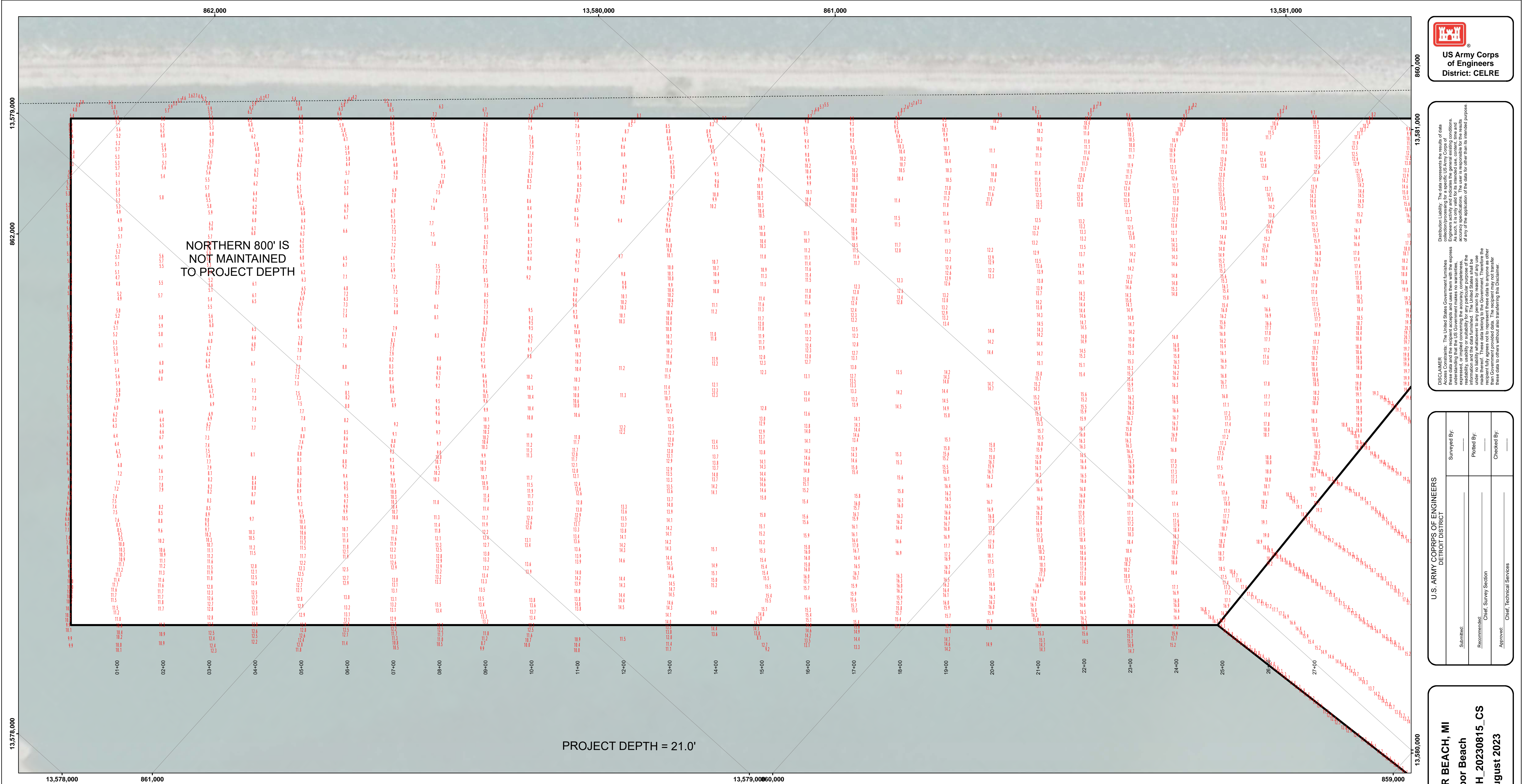
Sheet
Reference
Number
1 of 2

Revision Number:
4.2-20230815

U.S. ARMY CORPS OF ENGINEERS DETROIT DISTRICT			
Submitted:		Surveyed By:	
Recommended:		Plotted By:	
Approved:		Checked By:	

DISCLAIMER: The data represented in the results of data collection is for informational purposes only. The data is not intended for use in any other manner. The user is responsible for the accuracy of the data and its application. The user is responsible for the accuracy of the data and its application. The user is responsible for the accuracy of the data and its application.





LEGEND

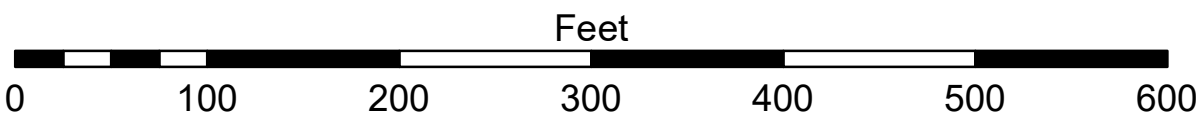
- Cable Submarine
- - - Cable Overhead
- Placement Area
- Beacon, General
- Contour Lines
- Channel_Limits

SOUNDING LEGEND

- LESS THAN PROJECT DEPTH
- PROJECT DEPTH
- PROJECT DEPTH +1'
- PROJECT DEPTH +2'
- PROJECT DEPTH +3'
- PROJECT DEPTH +4'
- PROJECT DEPTH +5'



1 inch = 100 feet



NOTES:

THE SOUNDINGS AND ASSOCIATED INFORMATION REPRESENTED HEREIN ARE THE RESULT OF SURVEYS MADE ON THE DATE AS INDICATED AND CAN ONLY BE CONSIDERED REPRESENTATIVE OF THE GENERAL CONDITIONS EXISTING AT THE TIME OF SURVEY.

THE SOUNDINGS DEPICTED HEREIN ARE EXPRESSED IN U.S. SURVEY FEET AND TENTHS THEREOF AND ARE REFERENCED TO THE FOLLOWING DATUMS:
HORIZONTAL: MICHIGAN STATE PLANE COORDINATE SYSTEM, MICHIGAN SOUTH ZONE #2113, NORTH AMERICAN DATUM (NAD) OF 1983.
VERTICAL: INTERNATIONAL GREAT LAKES DATUM (IGLD) OF 1985.

THE ABOVE SURVEY WAS CONDUCTED USING THE U.S.A.C.E. SURVEY VESSEL LAUNCH 3053 EMPLOYING THE FOLLOWING COMPONENTS:

POSITIONING: APPLANIX POS-MV4 W/DGPS
MOTION COMPENSATION: APPLANIX POS-MV4
SONAR: ODOM CV-300
SOFTWARE: HYPACK 2015

WATER LEVELS WERE OBTAINED FROM THE NOAA TIDE GAGE "HARBOR BEACH" (#9075014) AND REFERENCED TO IGLD 85.

PROJECT DEPTHS FOR THIS HARBOR RANGE FROM 23.0' TO 21.0'

AERIAL PHOTOGRAPHY DATA SOURCE: ESRI



DISCLAIMER: The data represented on this map is the result of data collection operations for a specific US Army Corps of Engineers activity and indicates the general existing conditions. The user is responsible for the results of any application of the data for other than its intended purpose.

DISCLAIMER: The United States Government furnishes these data and the recipient accepts and uses them with the express understanding that the data are not to be used for any purpose other than that for which they were furnished. The user is responsible for the results of any application of the data for other than its intended purpose.

DISCLAIMER: The United States Government furnishes these data and the recipient accepts and uses them with the express understanding that the data are not to be used for any purpose other than that for which they were furnished. The user is responsible for the results of any application of the data for other than its intended purpose.

U.S. ARMY CORPS OF ENGINEERS DETROIT DISTRICT		
Submitted:	Surveyed By:	
Recommended:	Plotted By:	
Approved:	Chief, Survey Section	
	Chief, Technical Services	

HARBOR BEACH, MI
Harbor Beach
HB_01_BCH_20230815_CS
15 August 2023

Sheet Reference Number
2 of 2

Revision Number:
4.2-20230815