

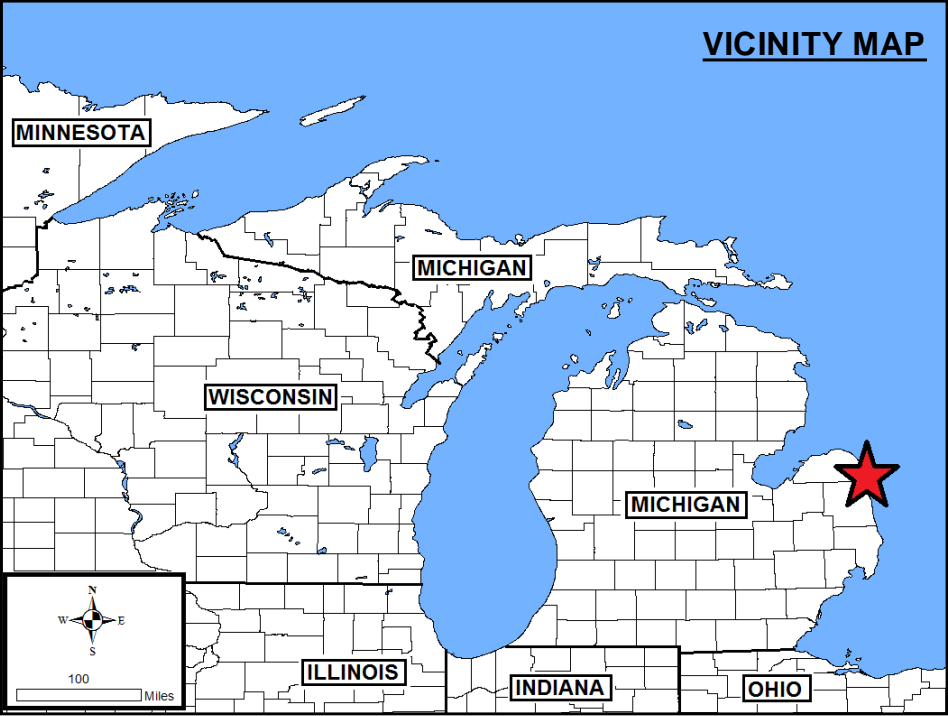
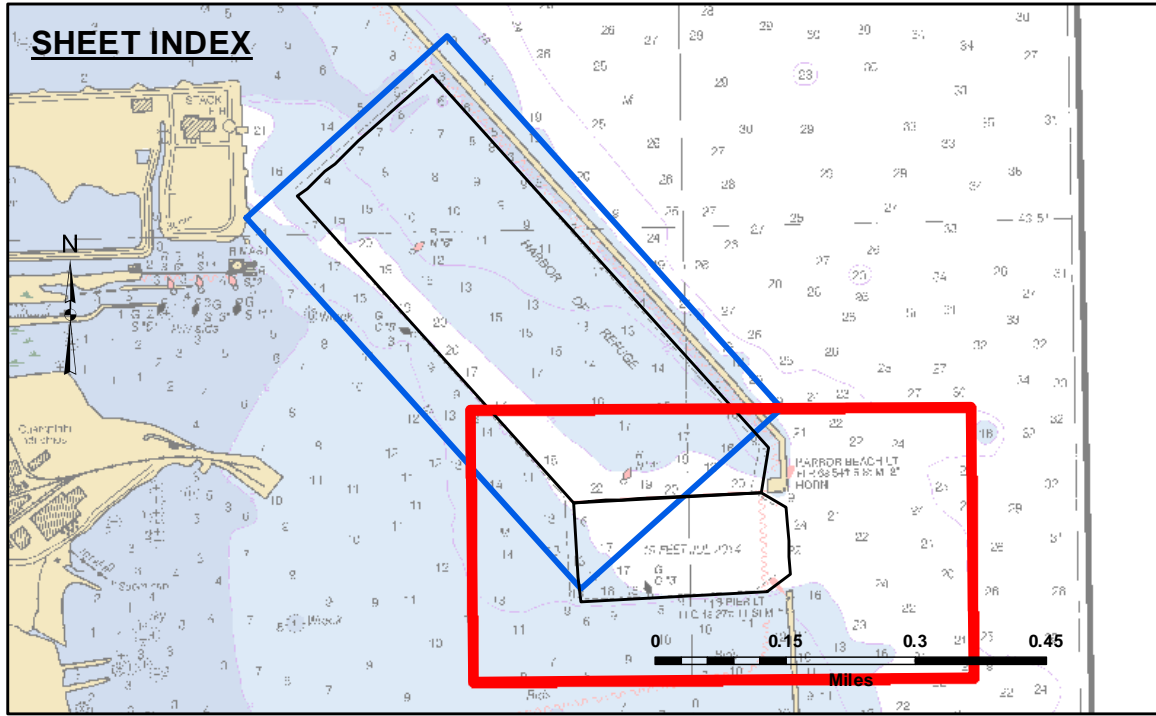
DISCLAIMER: The data represents the results of data collection and is not intended for use in any other manner. Engineers actively and indicates the general existing conditions. The user is responsible for the results of any of the application of the data for other than its intended purpose.

DISCLAIMER: The United States Government furnishes these data and the recipient accepts and uses them with the express understanding that the Government makes no warranty, expressed, or implied concerning the accuracy, completeness, readability, utility or suitability for any particular purpose of the data. The user is responsible for the results of any use of the data under no liability whatsoever to any person by reason of any use made thereof. These data belong to the Government. Therefore the recipient may not transfer these data to others without also transferring this Disclaimer.

U.S. ARMY CORPS OF ENGINEERS DETROIT DISTRICT	
Submitted:	Surveyed By:
Recommended:	Plotted By:
Approved:	Checked By:

HARBOR BEACH, MI  
Harbor Beach  
HB\_01\_BCH\_20210512\_CS  
12 May 2021

Sheet  
Reference  
Number  
1 of 2

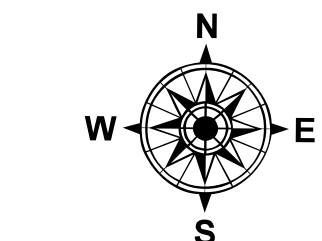


LEGEND

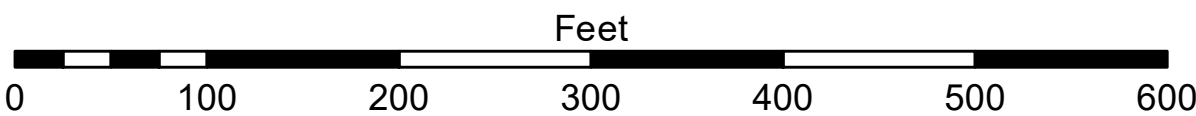
- ..... Cable Submarine
- - Cable Overhead
- Placement Area
- Beacon, General
- Contour Lines
- Channel\_Limits

SOUNDING LEGEND

- LESS THAN PROJECT DEPTH
- PROJECT DEPTH
- PROJECT DEPTH +1'
- PROJECT DEPTH +2'
- PROJECT DEPTH +3'
- PROJECT DEPTH +4'
- PROJECT DEPTH +5'



1 inch = 100 feet



NOTES:

THE SOUNDINGS AND ASSOCIATED INFORMATION REPRESENTED HEREIN ARE THE RESULT OF SURVEYS MADE ON THE DATE AS INDICATED AND CAN ONLY BE CONSIDERED REPRESENTATIVE OF THE GENERAL CONDITIONS EXISTING AT THE TIME OF SURVEY.

THE SOUNDINGS DEPICTED HEREIN ARE EXPRESSED IN U.S. SURVEY FEET AND TENTHS THEREOF AND ARE REFERENCED TO THE FOLLOWING DATUMS:  
HORIZONTAL: MICHIGAN STATE PLANE COORDINATE SYSTEM, MICHIGAN SOUTH ZONE #2113, NORTH AMERICAN DATUM (NAD) OF 1983.  
VERTICAL: INTERNATIONAL GREAT LAKES DATUM (IGLD) OF 1985.

THE ABOVE SURVEY WAS CONDUCTED USING THE U.S.A.C.E. SURVEY VESSEL LAUNCH 3053 EMPLOYING THE FOLLOWING COMPONENTS:

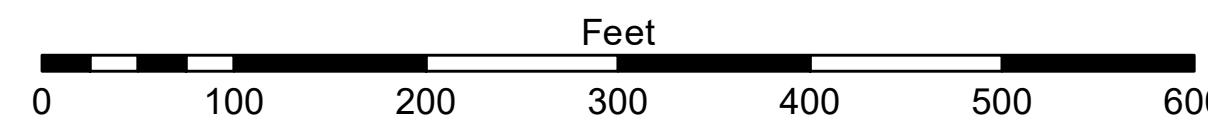
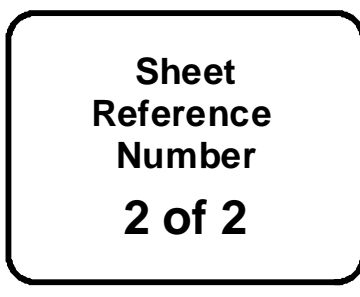
POSITIONING: APPLANIX POS-MV4 W/DGPS  
MOTION COMPENSATION: APPLANIX POS-MV4  
SONAR: ODOM CV-300  
SOFTWARE: HYPACK 2015

WATER LEVELS WERE OBTAINED FROM THE NOAA TIDE GAGE "HARBOR BEACH" (#9075014) AND REFERENCED TO IGLD 85.

PROJECT DEPTHS FOR THIS HARBOR BEACH FROM 23.0' TO 21.0'

AERIAL PHOTOGRAPHY DATA SOURCE: ESRI





Revision Number  
4.2-20200420