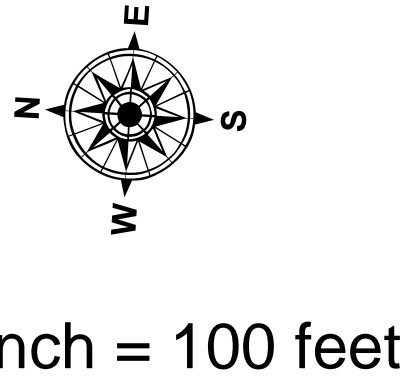
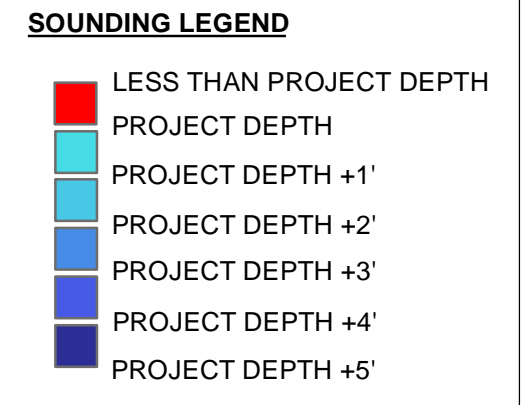


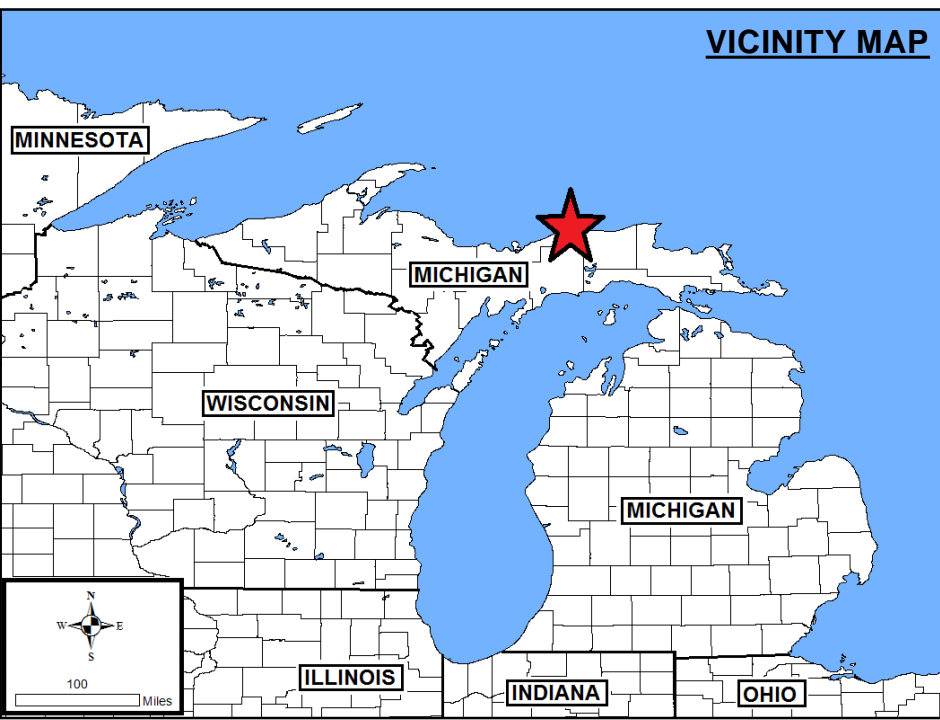
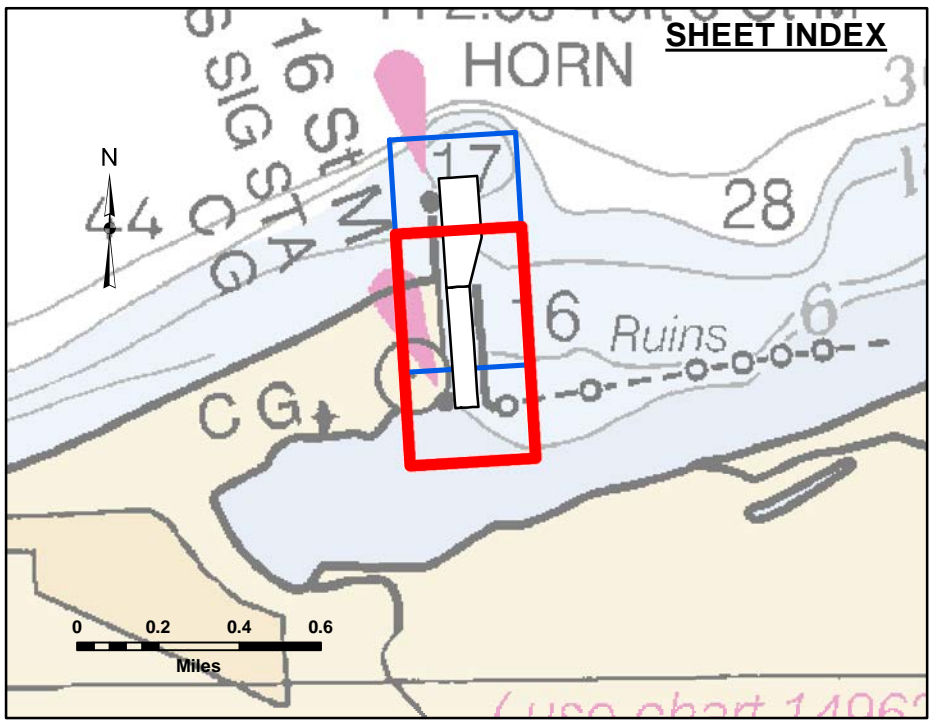
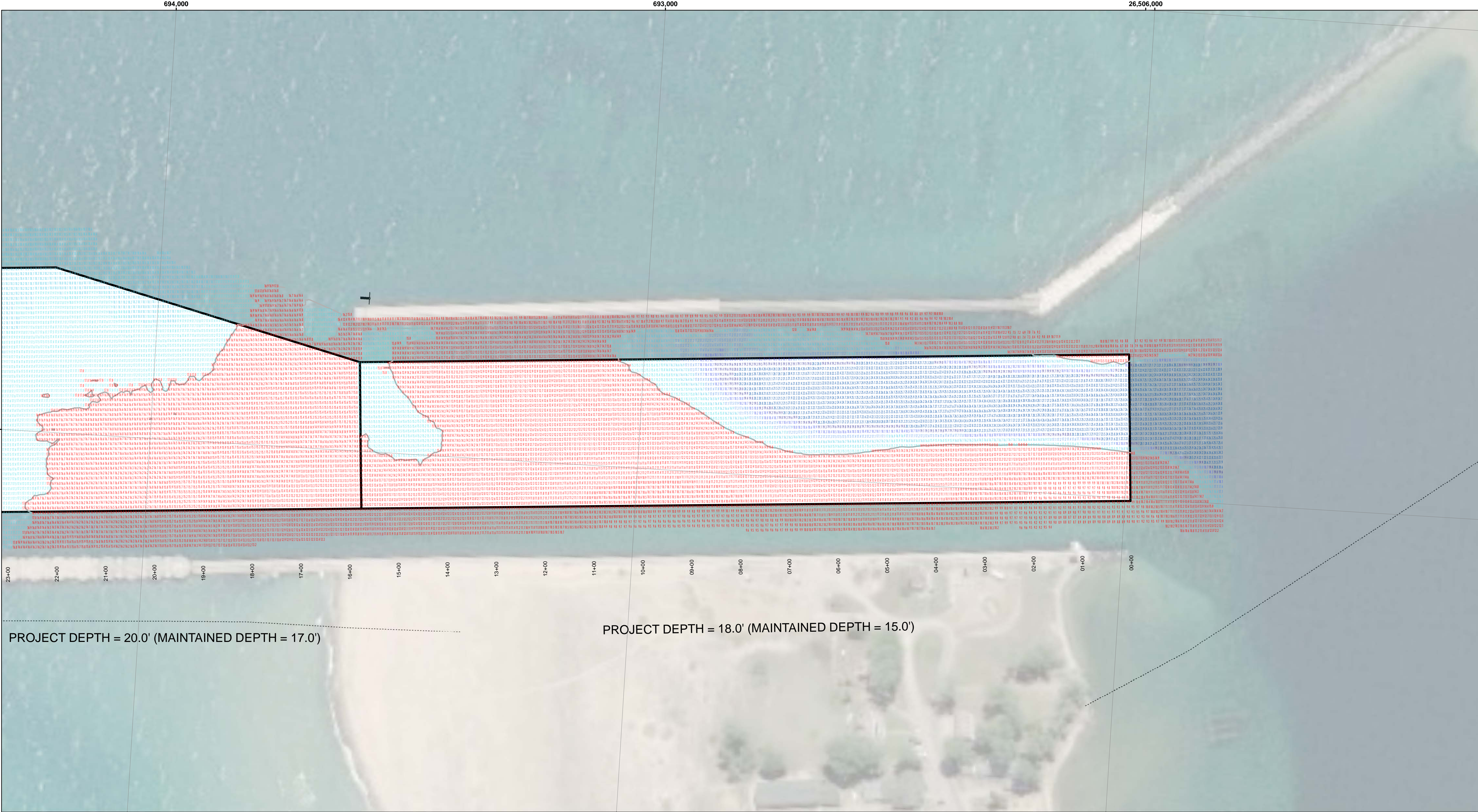
- LEGEND**
- Cable Submarine
 - Cable Overhead
 - Placement Area
 - ↓ Beacon, General
 - Contour Lines
 - Channel Limits



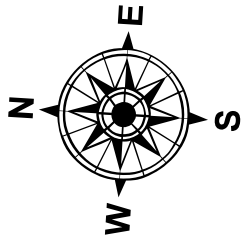
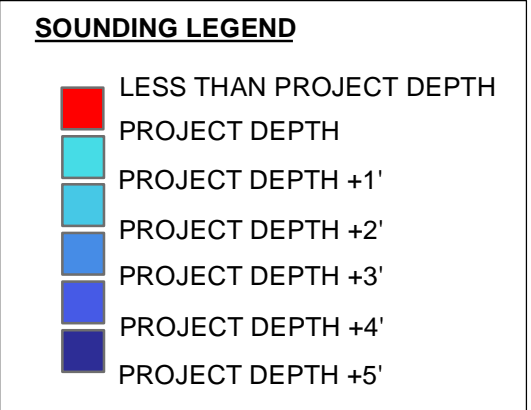
- NOTES:**
- 1) THE INFORMATION DEPICTED ON THIS MAP REPRESENTS THE RESULTS OF SURVEYS MADE ON DATED LISTED AND CAN ONLY BE CONSIDERED AS INDICATING THE GENERAL CONDITIONS PRESENT AT THAT TIME.
 - 2) ELEVATIONS AND SOUNDING DEPTHS ARE REFERRED TO INTERNATIONAL GREAT LAKES DATUM 1985 (IGLD 85). LOW WATER DATUM (LWD) ZERO IS 601.1 FEET ABOVE MEAN WATER LEVEL AT POINT RIMOUSKI QUEBEC. WATER LEVEL READINGS ARE FROM A GAUGE LOCATED AT GRAND MARAIS, MI. DEPTHS ARE MEASURED USING A TELEDYNE ECHOTRAC E20 SINGLE BEAM ECHOSOUNDER.
 - 3) HORIZONTAL POSITIONING IS DETERMINED BY USING A TRIMBLE SP5461 DGPS RECEIVER WITH MARINESTAR GPS CORRECTIONS.
 - 4) GRID COORDINATES ARE BASED ON THE MICHIGAN STATE PLANE COORDINATE SYSTEM, LAMBERT PROJECTION, MICHIGAN NORTH ZONE (211), NORTH AMERICAN DATUM 1983 (NAD83). ALL COORDINATES SHOWN ARE IN U.S. SURVEY FEET.
 - 5) THE LOCATION OF NAVIGATION AIDS REPRESENT THEIR GENERAL LOCATION AND CANNOT BE CONSIDERED FOR NAVIGATION.
- IMAGERY SOURCED : ESRI

Grand Marais Harbor, MI
Grand Marais Harbor
GR_01_MAS_20230531_CS
31 May 2023

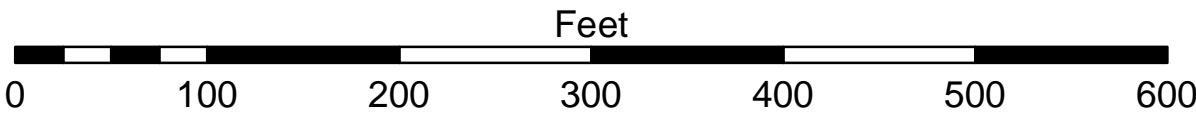
Sheet
Reference
Number
1 of 2



- LEGEND**
- Cable Submarine
 - Cable Overhead
 - Placement Area
 - ↓ Beacon, General
 - Contour Lines
 - ▭ Channel Limits



1 inch = 100 feet



- NOTES:**
- 1) THE INFORMATION DEPICTED ON THIS MAP REPRESENTS THE RESULTS OF SURVEYS MADE ON DATED LISTED AND CAN ONLY BE CONSIDERED AS INDICATING THE GENERAL CONDITIONS PRESENT AT THAT TIME.
 - 2) ELEVATIONS AND SOUNDING DEPTHS ARE REFERRED TO INTERNATIONAL GREAT LAKES DATUM 1985 (IGLD 85). LOW WATER DATUM (LWD) ZERO IS 601.1 FEET ABOVE MEAN WATER LEVEL AT PONT ROQUISSE QUEBEC. WATER LEVEL READINGS ARE FROM A GAUGE LOCATED AT GRAND MARAIS, MI. DEPTHS ARE MEASURED USING A TELEDYNE ECHOTRAC E20 SINGLE BEAM ECHOSOUNDER.
 - 3) HORIZONTAL POSITIONING IS DETERMINED BY USING A TRIMBLE SPS461 DGPS RECEIVER WITH MARINESTAR GPS CORRECTIONS.
 - 4) GRID COORDINATES ARE BASED ON THE MICHIGAN STATE PLANE COORDINATE SYSTEM, LAMBERT PROJECTION, MICHIGAN NORTH ZONE (211), NORTH AMERICAN DATUM 1983 (NAD83). ALL COORDINATES SHOWN ARE IN U.S. SURVEY FEET.
 - 5) THE LOCATION OF NAVIGATION AIDS REPRESENT THEIR GENERAL LOCATION AND CANNOT BE CONSIDERED FOR NAVIGATION.
- IMAGERY SOURCED : ESRI

Grand Marais Harbor, MI
Grand Marais Harbor
GR_01_MAS_20230531_CS
31 May 2023

Sheet
Reference
Number
2 of 2