

- NOTES:**
- 1) THE INFORMATION DEPICTED ON THIS MAP REPRESENTS THE RESULTS OF SURVEYS MADE ON DATES LISTED AND CAN ONLY BE CONSIDERED AS INDICATING THE GENERAL CONDITIONS PRESENT AT THAT TIME.
  - 2) ELEVATIONS AND SOUNDING DEPTHS ARE REFERRED TO INTERNATIONAL GREAT LAKES DATUM 1985 (IGLD 85). LOW WATER DATUM (LWD) ZERO IS 601.1 FEET ABOVE MEAN WATER LEVEL AT POINT ROYAL, QUEBEC. WATER LEVEL READINGS ARE FROM A GAUGE LOCATED AT GRAND MARAIS, MI. DEPTHS ARE MEASURED USING AN R230C 2024 MULTIBEAM SONAR.
  - 3) HORIZONTAL POSITIONING IS DETERMINED USING RTK GPS CORRECTIONS FROM A BASE STATION. THE GPS RECEIVER IS MANUFACTURED BY APPLANIX MARINE POSMV VER. 4.0.
  - 4) GRID COORDINATES ARE BASED ON THE MICHIGAN STATE PLANE COORDINATE SYSTEM, LAMBERT PROJECTION, MICHIGAN NORTH ZONE (211). NORTH AMERICAN DATUM 1983 (NAD83). ALL COORDINATES SHOWN ARE IN U.S. SURVEY FEET.
  - 5) THE LOCATION OF NAVIGATION AIDS REPRESENT THEIR GENERAL LOCATION AND CANNOT BE CONSIDERED FOR NAVIGATION.
- IMAGERY SOURCED : ESRI

Grand Marais Harbor, MI  
Grand Marais Harbor  
GR\_01\_MAS\_20220602\_CS  
02 June 2022

Sheet  
Reference  
Number  
1 of 2

U.S. ARMY CORPS OF ENGINEERS  
DETROIT DISTRICT

Submitted:  
Recommended:  
Approved:

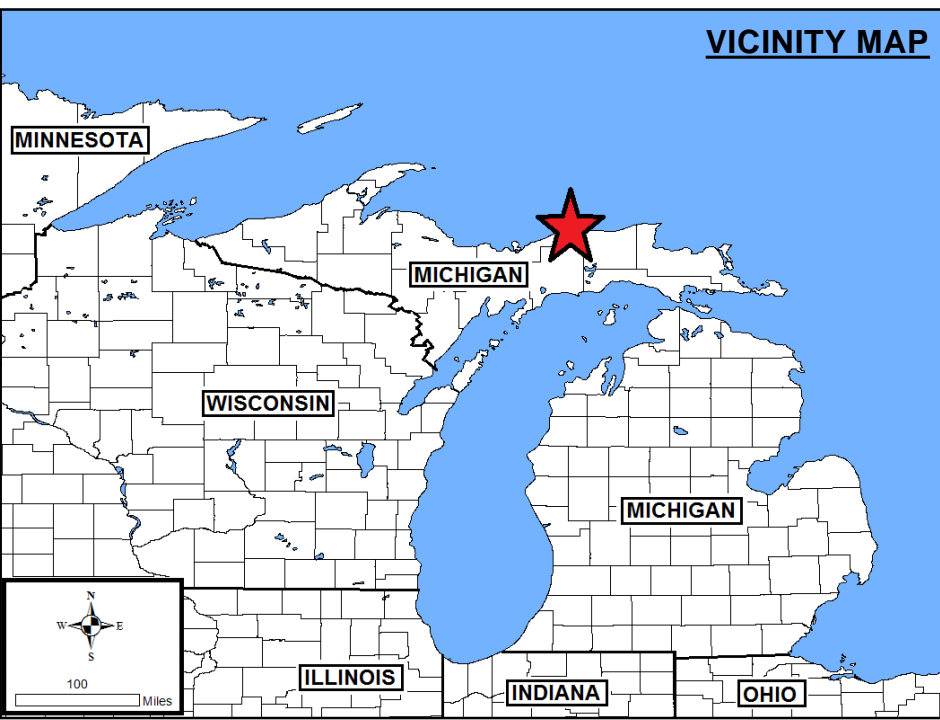
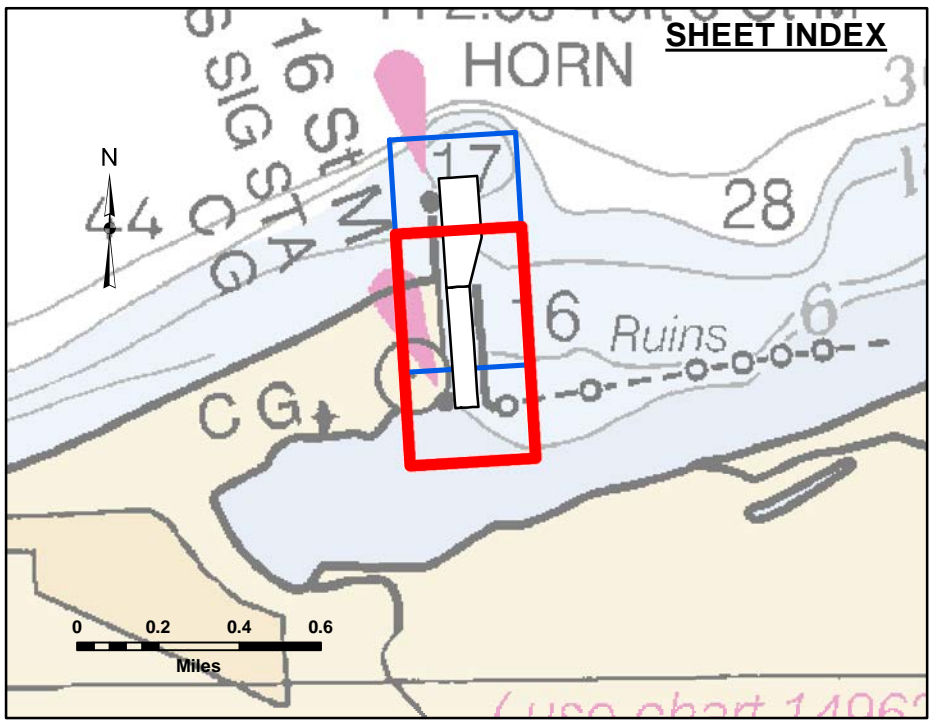
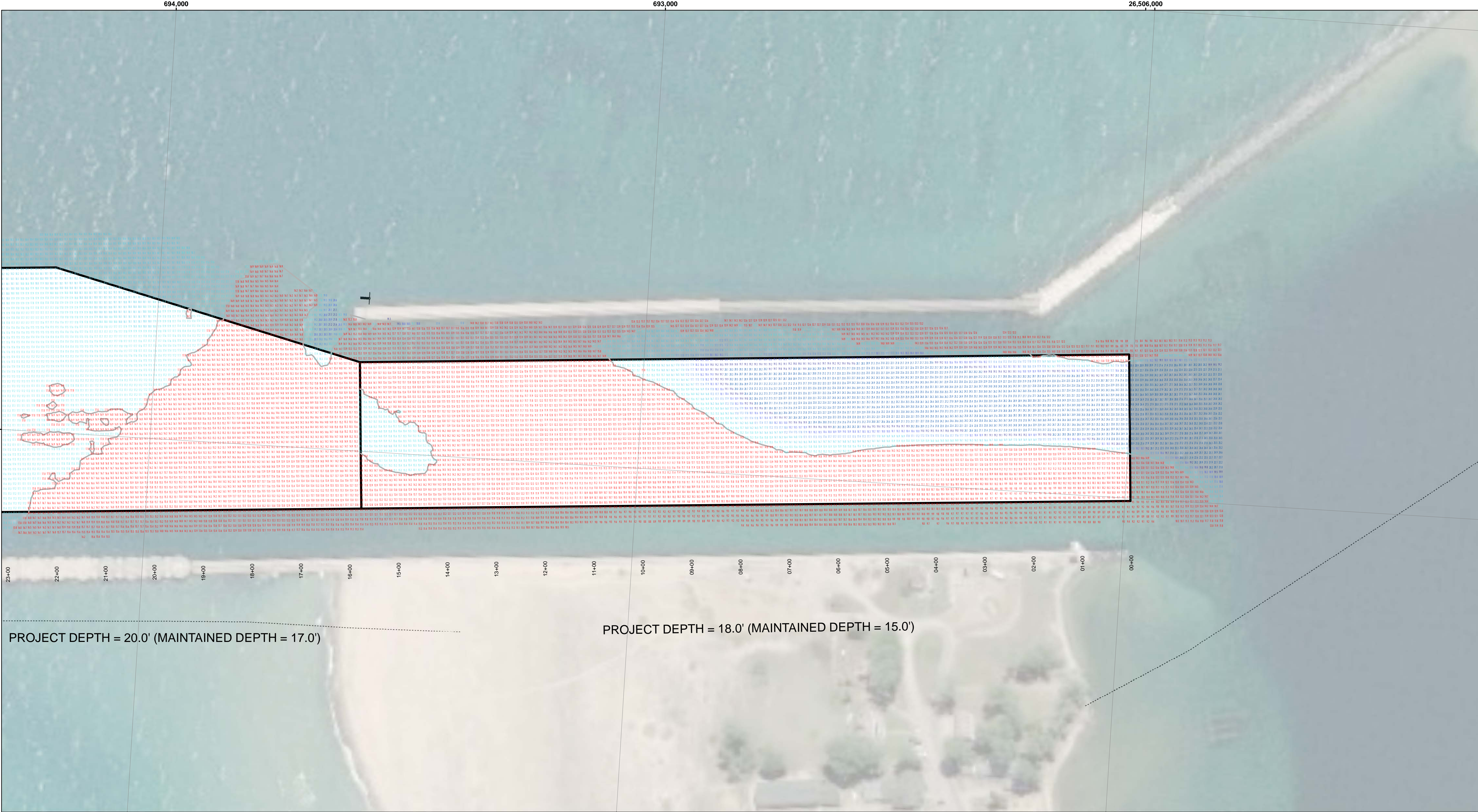
Surveyed By:  
Plotted By:  
Checked By:

Chief, Survey Section  
Chief, Technical Services

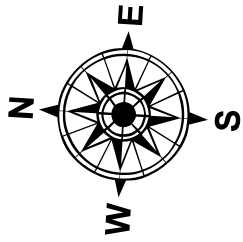
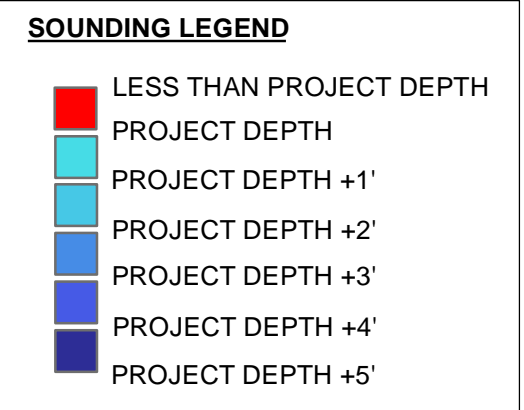
DISCLAIMER: The data presented on this map is the property of the U.S. Army Corps of Engineers and is provided for informational purposes only. The user is responsible for the accuracy and reliability of the data for any application of the data for other than its intended purpose. The user is responsible for the accuracy and reliability of the data for any application of the data for other than its intended purpose. The user is responsible for the accuracy and reliability of the data for any application of the data for other than its intended purpose.



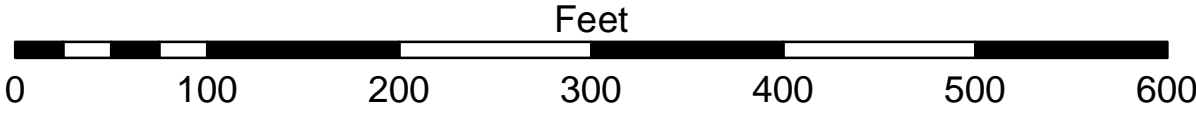




- LEGEND**
- ..... Cable Submarine
  - Cable Overhead
  - Placement Area
  - ⬇ Beacon, General
  - Contour Lines
  - ▭ Channel Limits



1 inch = 100 feet



- NOTES:**
- 1) THE INFORMATION DEPICTED ON THIS MAP REPRESENTS THE RESULTS OF SURVEYS MADE ON DATES LISTED AND CAN ONLY BE CONSIDERED AS INDICATING THE GENERAL CONDITIONS PRESENT AT THAT TIME.
  - 2) ELEVATIONS AND SOUNDING DEPTHS ARE REFERRED TO INTERNATIONAL GREAT LAKES DATUM 1985 (IGLD 85). LOW WATER DATUM (LWD) ZERO IS 601.1 FEET ABOVE MEAN WATER LEVEL AT POINT RIMOUSKI QUEBEC. WATER LEVEL READINGS ARE FROM A GAUGE LOCATED AT GRAND MARAIS, MI. DEPTHS ARE MEASURED USING AN RZSONIC 2024 MULTIBEAM SONAR.
  - 3) HORIZONTAL POSITIONING IS DETERMINED USING RTK GPS CORRECTIONS FROM A BASE STATION. THE GPS RECEIVER IS MANUFACTURED BY APPLANIX MARINE POSIMV VER. 4.0.
  - 4) GRID COORDINATES ARE BASED ON THE MICHIGAN STATE PLANE COORDINATE SYSTEM, LAMBERT PROJECTION, MICHIGAN NORTH ZONE (211). NORTH AMERICAN DATUM 1983 (NAD83). ALL COORDINATES SHOWN ARE IN U.S. SURVEY FEET.
  - 5) THE LOCATION OF NAVIGATION AIDS REPRESENT THEIR GENERAL LOCATION AND CANNOT BE CONSIDERED FOR NAVIGATION.
- IMAGERY SOURCED : ESRI

Grand Marais Harbor, MI  
Grand Marais Harbor  
GR\_01\_MAS\_20220602\_CS  
02 June 2022

Sheet  
Reference  
Number  
2 of 2