

26-505-000

26-505-000



Disclaimer: The data represents the results of data collection/processing for a specific US Army Corps of Engineers activity and indicates the general existing conditions. The user is responsible for the accuracy, completeness, and reliability of the data for other than its intended purpose.

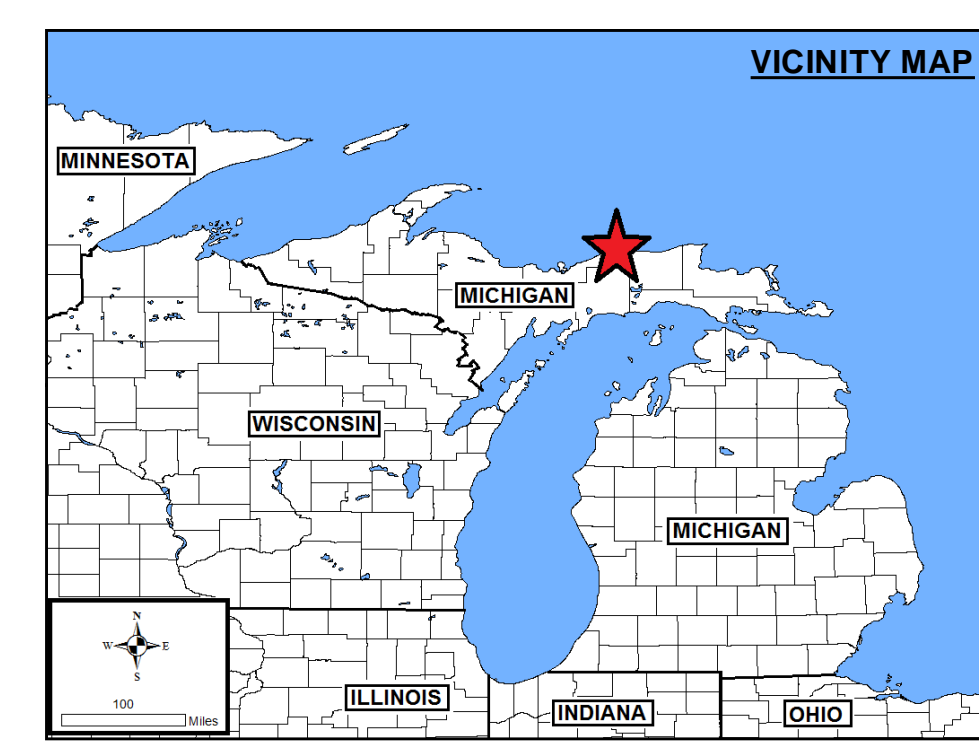
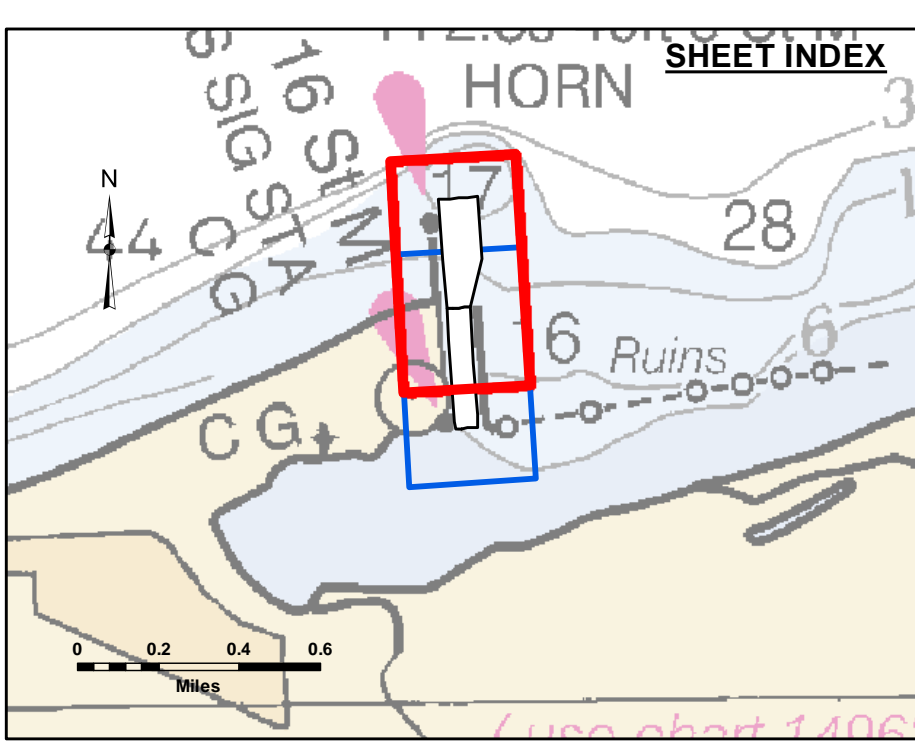
Access Constraints: The United States Government sponsors these data and the recipient accepts and uses them with the express understanding that they are provided for informational purposes only. The data is not intended for navigation, and the user is responsible for the accuracy, completeness, and reliability of the data for other than its intended purpose.

Access Constraints: The United States Government sponsors these data and the recipient accepts and uses them with the express understanding that they are provided for informational purposes only. The data is not intended for navigation, and the user is responsible for the accuracy, completeness, and reliability of the data for other than its intended purpose.

Submitted:	Surveyed By:
Recommended:	Plotted By:
Approved:	Checked By:

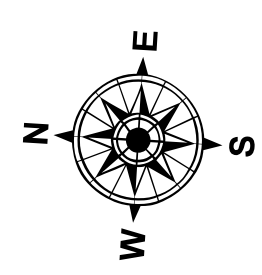
Grand Marais Harbor, MI
Grand Marais Harbor
GR_01_MAS_20210902_CS
02 September 2021

Sheet Reference Number
1 of 2

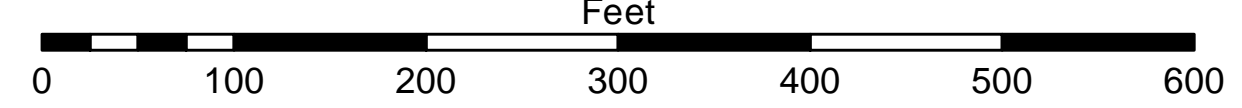


- LEGEND**
- Cable Submarine
 - - - Cable Overhead
 - Placement Area
 - ↓ Beacon, General
 - Contour Lines
 - ▭ Channel Limits

- SOUNDING LEGEND**
- LESS THAN PROJECT DEPTH
 - PROJECT DEPTH
 - PROJECT DEPTH +1'
 - PROJECT DEPTH +2'
 - PROJECT DEPTH +3'
 - PROJECT DEPTH +4'
 - PROJECT DEPTH +5'



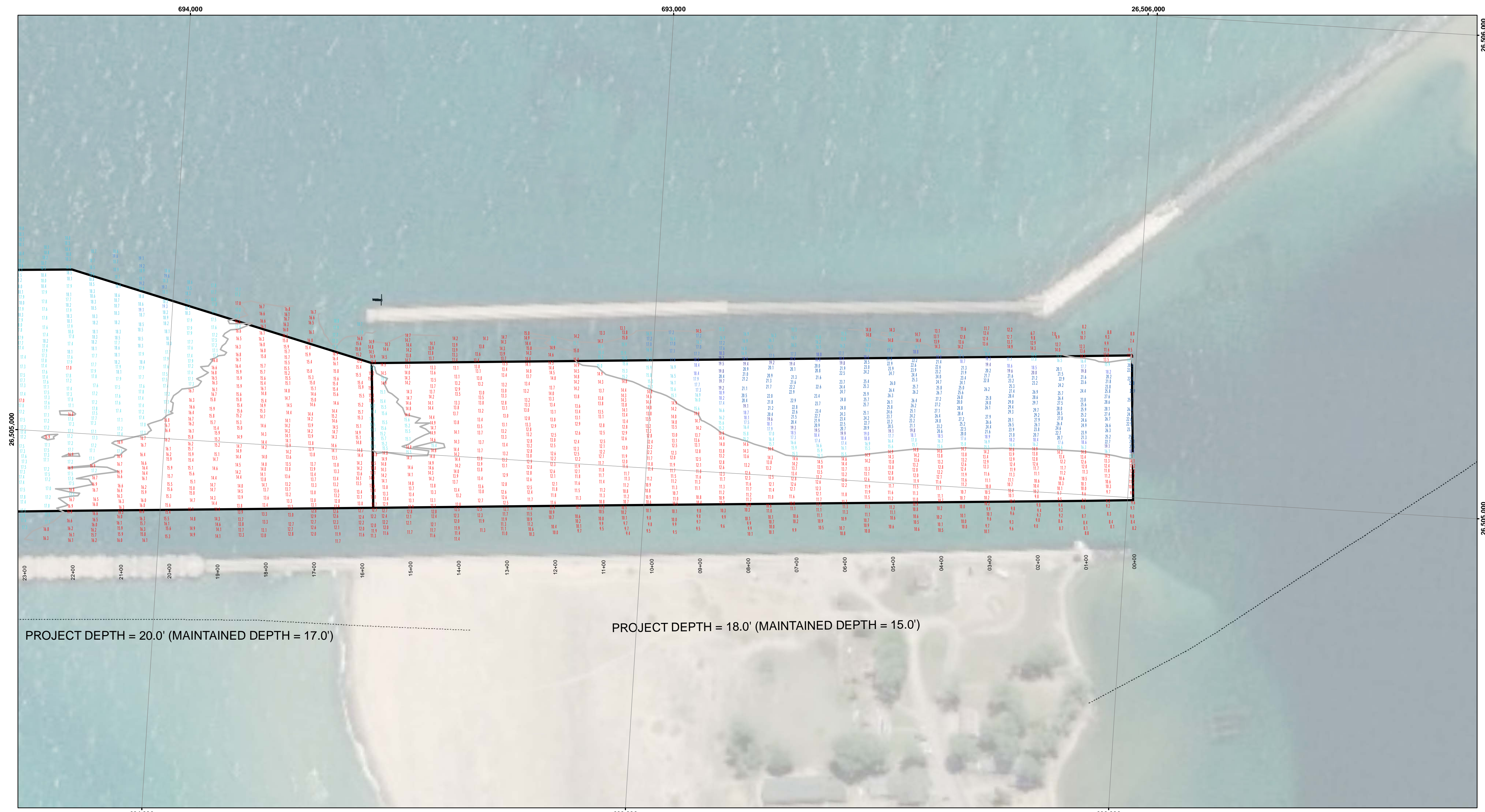
1 inch = 100 feet



NOTES:

- 1) THE INFORMATION DEPICTED ON THIS MAP REPRESENTS THE RESULTS OF SURVEYS MADE ON DATED LISTED AND CAN ONLY BE CONSIDERED AS INDICATING THE GENERAL CONDITIONS PRESENT AT THAT TIME.
- 2) ELEVATIONS AND SOUNDING DEPTHS ARE REFERRED TO INTERNATIONAL GREAT LAKES DATUM 1985 (IGLD 85). LOW WATER DATUM (LWD) ZERO IS 691.1 FEET ABOVE MEAN WATER LEVEL AT POINT RIMOUSKI QUEBEC. WATER LEVEL READINGS ARE FROM A GAUGE LOCATED AT GRAND MARAIS, MI. DEPTHS ARE MEASURED USING A TELETYPE ECHOTRAC E20 SINGLE BEAM ECHOSOUNDER.
- 3) HORIZONTAL POSITIONING IS DETERMINED BY USING A TRIMBLE SP5461 DGPS RECEIVER WITH MARINESTAR GPS CORRECTIONS.
- 4) GRID COORDINATES ARE BASED ON THE MICHIGAN STATE PLANE COORDINATE SYSTEM, LAMBERT PROJECTION, MICHIGAN NORTH ZONE (2111), NORTH AMERICAN DATUM 1983 (NAD83). ALL COORDINATES SHOWN ARE IN U.S. SURVEY FEET.
- 5) THE LOCATION OF NAVIGATION AIDS REPRESENT THEIR GENERAL LOCATION AND SHOULD BE CONSIDERED FOR NAVIGATION.

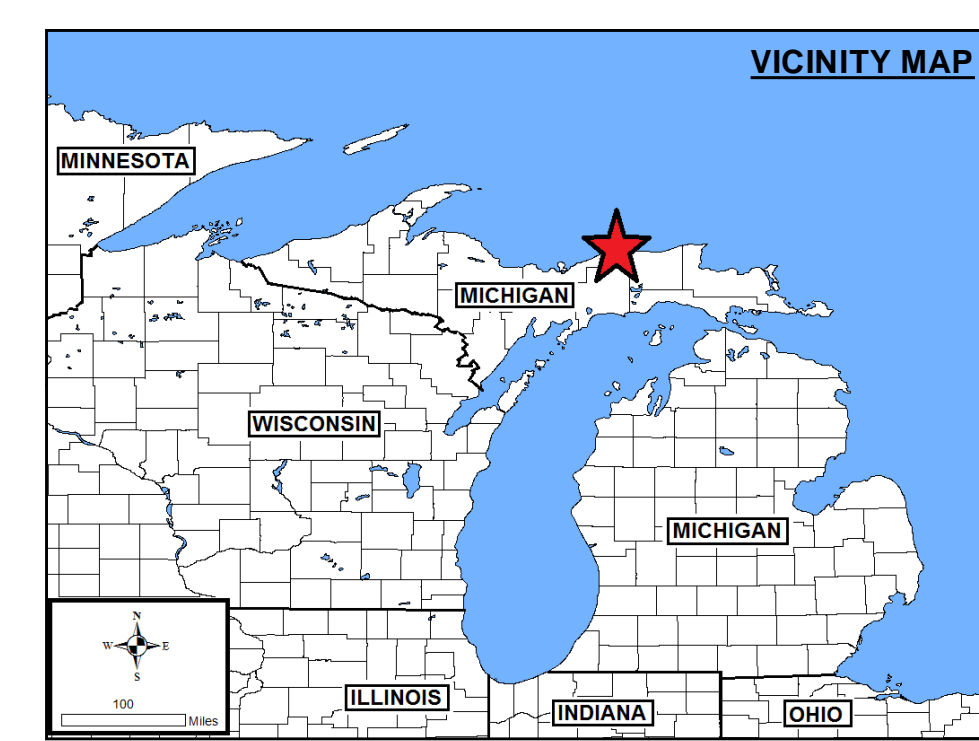
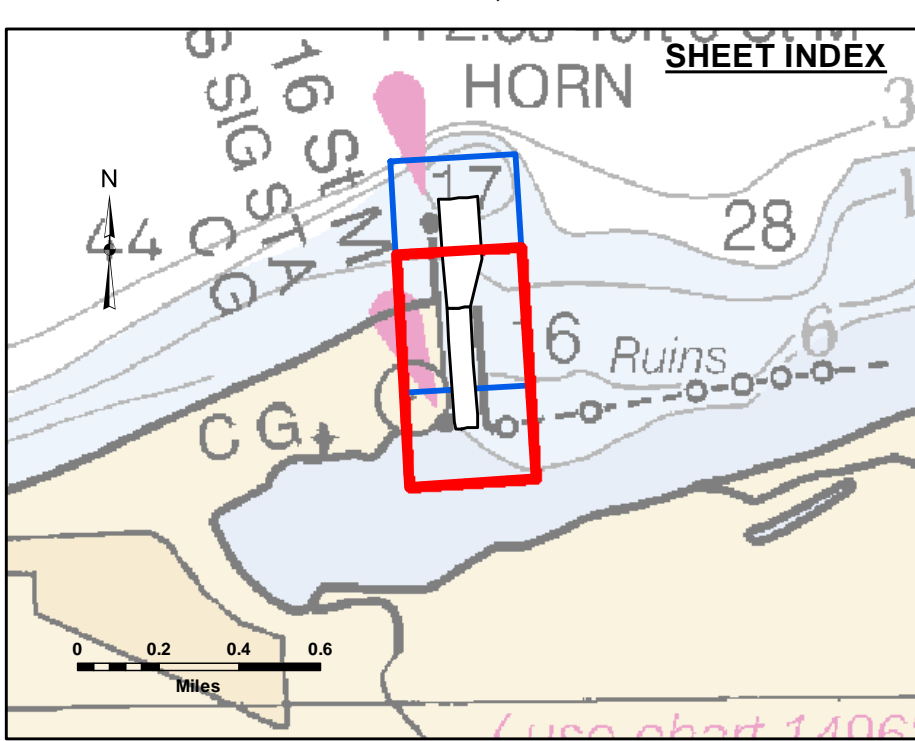
IMAGERY SOURCED : ESRI



Disclaimer: The data represents the results of data collection for a specific project. The data is not intended for use for any other purpose than that for which it was collected. The United States Government disclaims any liability for the use of this data for purposes not intended by the United States Government. The user is responsible for the accuracy, reliability, and availability of the data for any particular purpose of the user. These data are provided as a service to the user and are not intended to be used for any other purpose than that for which they were collected. The recipient may not transfer these data to others without transferring the Disclaimer.

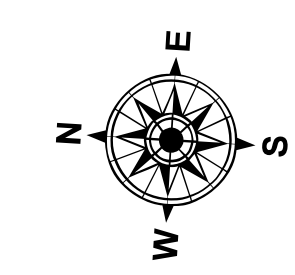
Submitted:	Surveyed By:
Recommended:	Plotted By:
Approved:	Checked By:

U.S. ARMY CORPS OF ENGINEERS
DETROIT DISTRICT

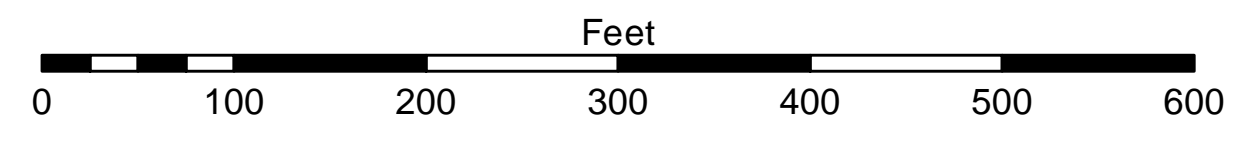


- LEGEND**
- Cable Submarine
 - - - Cable Overhead
 - Placement Area
 - ⊥ Beacon, General
 - Contour Lines
 - ▭ Channel Limits

- SOUNDING LEGEND**
- LESS THAN PROJECT DEPTH
 - PROJECT DEPTH
 - PROJECT DEPTH +1'
 - PROJECT DEPTH +2'
 - PROJECT DEPTH +3'
 - PROJECT DEPTH +4'
 - PROJECT DEPTH +5'



1 inch = 100 feet



NOTES:

- 1) THE INFORMATION DEPICTED ON THIS MAP REPRESENTS THE RESULTS OF SURVEYS MADE ON DATED LISTED AND CAN ONLY BE CONSIDERED AS INDICATING THE GENERAL CONDITIONS PRESENT AT THAT TIME.
- 2) ELEVATIONS AND SOUNDING DEPTHS ARE REFERRED TO INTERNATIONAL GREAT LAKES DATUM 1985 (IGLD 85). LOW WATER DATUM (LWD) ZERO IS 691.1 FEET ABOVE MEAN WATER LEVEL AT POINT RIMOUSKI QUEBEC. WATER LEVEL READINGS ARE FROM A GAUGE LOCATED AT GRAND MARAIS, MI. DEPTHS ARE MEASURED USING A TELEDYNE ECHOTRAC E20 SINGLE BEAM ECHOSOUNDER.
- 3) HORIZONTAL POSITIONING IS DETERMINED BY USING A TRIMBLE SP461 DGPS RECEIVER WITH MARINESTAR GPS CORRECTIONS.
- 4) GRID COORDINATES ARE BASED ON THE MICHIGAN STATE PLANE COORDINATE SYSTEM, LAMBERT PROJECTION, MICHIGAN NORTH ZONE (2111). NORTH AMERICAN DATUM 1983 (NAD83). ALL COORDINATES SHOWN ARE IN U.S. SURVEY FEET.
- 5) THE LOCATION OF NAVIGATION AIDS REPRESENT THEIR GENERAL LOCATION AND CANNOT BE CONSIDERED FOR NAVIGATION.

IMAGERY SOURCED : ESRI

Grand Marais Harbor, MI
Grand Marais Harbor
GR_01_MAS_20210902_CS
02 September 2021

Sheet Reference Number
2 of 2