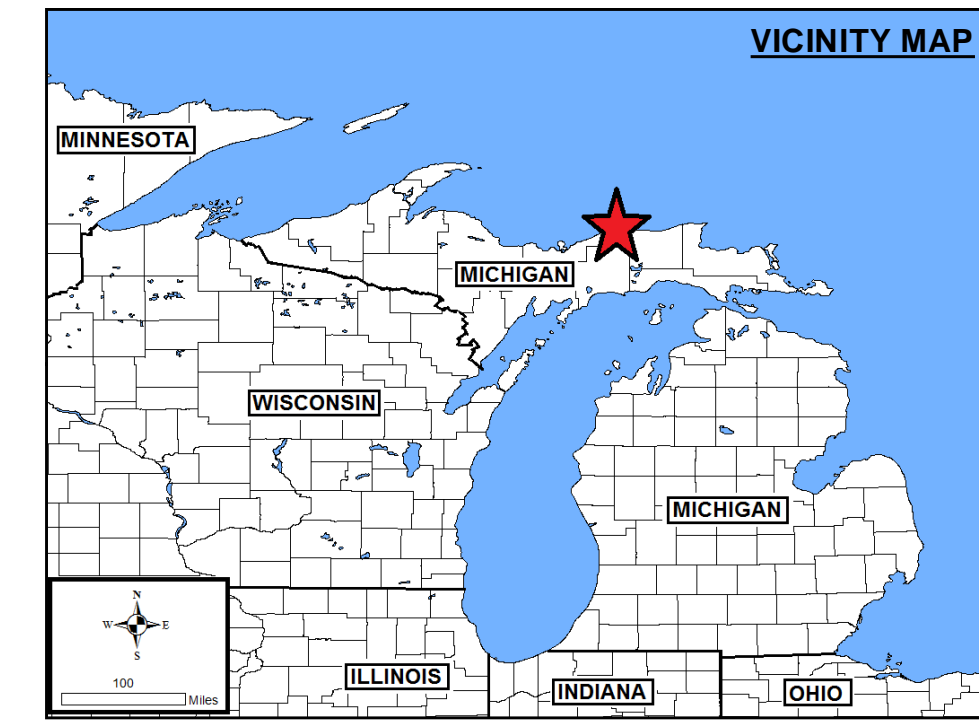
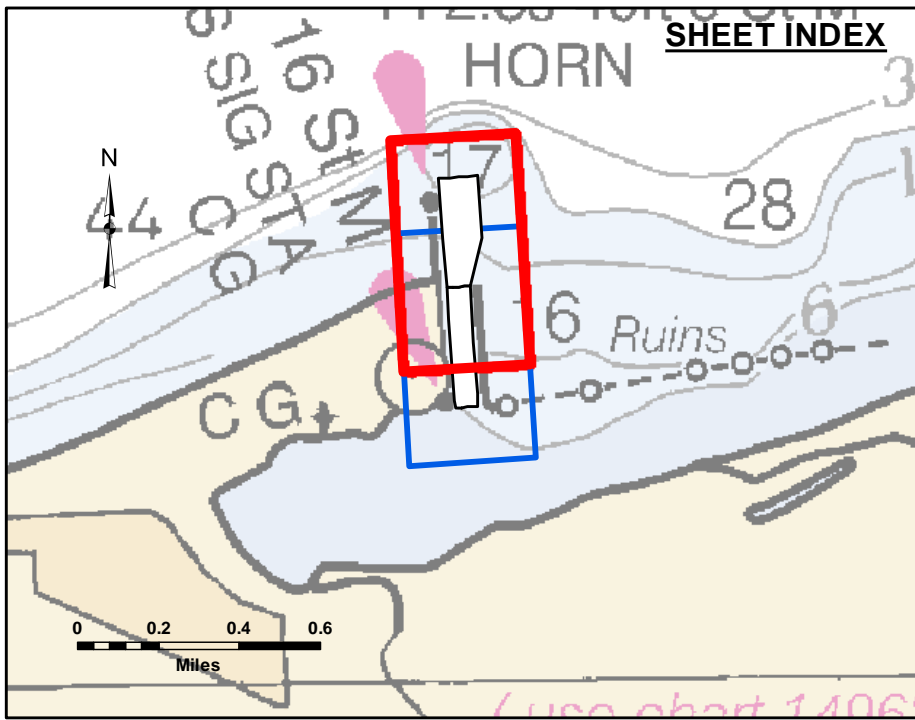


DISCLAIMER: The data represents the results of data collection and processing for a specific US Army Corps of Engineers activity and indicates the general existing conditions. The user is responsible for the accuracy, completeness, and reliability of the data for other than its intended purpose. The user is responsible for the accuracy, completeness, and reliability of the data for other than its intended purpose. These data are provided for informational purposes only and are not to be used for any purpose other than that for which they were collected. The user is responsible for the accuracy, completeness, and reliability of the data for other than its intended purpose. These data are provided for informational purposes only and are not to be used for any purpose other than that for which they were collected.

U.S. ARMY CORPS OF ENGINEERS DETROIT DISTRICT		
Submitted By:	Surveyed By:	
Recommended By: Chief, Survey Section	Plotted By:	
Approved:	Checked By:	

Grand Marais Harbor, MI
Grand Marais Harbor
GR_01_MAS_20200806_CS
06 August 2020

Sheet Reference Number
1 of 2

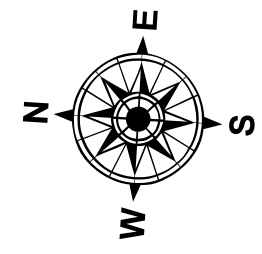


LEGEND

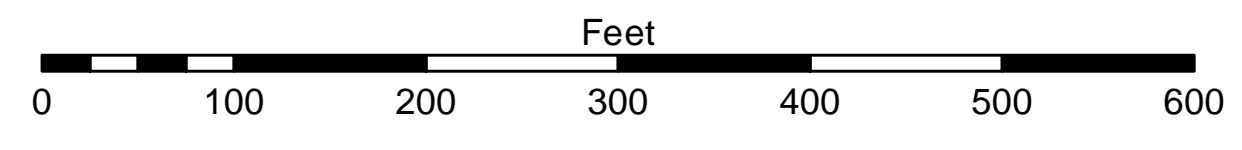
- Cable Submarine
- - - Cable Overhead
- Placement Area
- ⊥ Beacon, General
- Contour Lines
- ▭ Channel Limits

SOUNDING LEGEND

- LESS THAN PROJECT DEPTH
- PROJECT DEPTH
- PROJECT DEPTH +1'
- PROJECT DEPTH +2'
- PROJECT DEPTH +3'
- PROJECT DEPTH +4'
- PROJECT DEPTH +5'



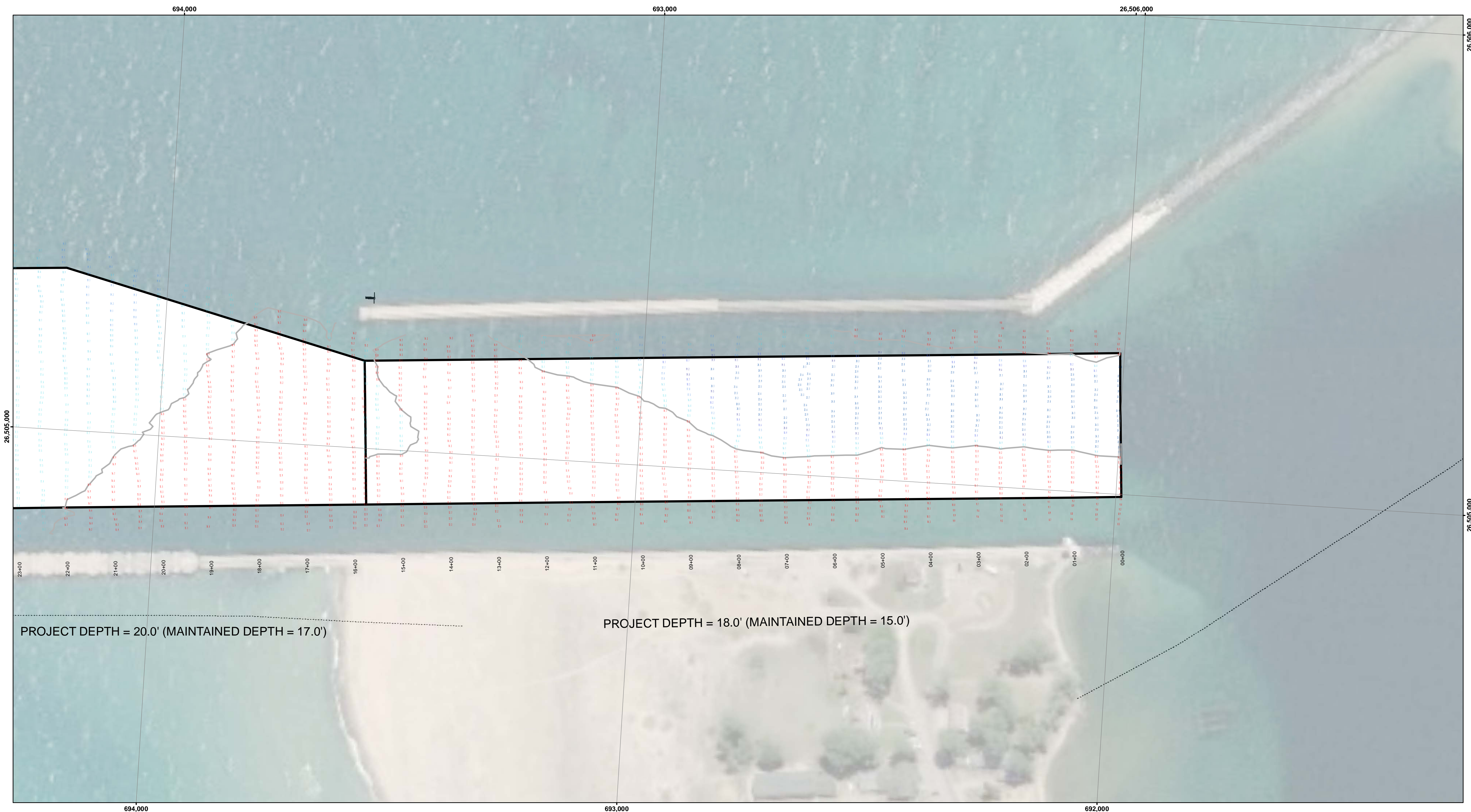
1 inch = 100 feet



NOTES:

- 1) THE INFORMATION DEPICTED ON THIS MAP REPRESENTS THE RESULTS OF SURVEYS MADE ON DATED LISTED AND CAN ONLY BE CONSIDERED AS INDICATING THE GENERAL CONDITIONS PRESENT AT THAT TIME.
- 2) ELEVATIONS AND SOUNDING DEPTHS ARE REFERRED TO INTERNATIONAL GREAT LAKES DATUM 1985 (IGLD 85). LOW WATER DATUM (LWD) ZERO IS 60.1 FEET ABOVE MEAN WATER LEVEL AT POINT RIMOUSKI QUEBEC. WATER LEVEL READINGS ARE FROM A GAUGE LOCATED AT GRAND MARAIS, MI. DEPTHS ARE MEASURED USING AN ODOM ECHOTRAC E20 SINGLEBEAM SOUNDER.
- 3) HORIZONTAL POSITIONING IS DETERMINED USING A TRIMBLE SPS461 SUB-METER DGPS RECEIVER.
- 4) GRID COORDINATES ARE BASED ON THE MICHIGAN STATE PLANE COORDINATE SYSTEM, LAMBERT PROJECTION, MICHIGAN NORTH ZONE (2111), NORTH AMERICAN DATUM 1983 (NAD83). ALL COORDINATES SHOWN ARE IN U.S. SURVEY FEET.
- 5) THE LOCATION OF NAVIGATION AIDS REPRESENT THEIR GENERAL LOCATION AND CANNOT BE CONSIDERED FOR NAVIGATION.

IMAGERY SOURCED : ESRI

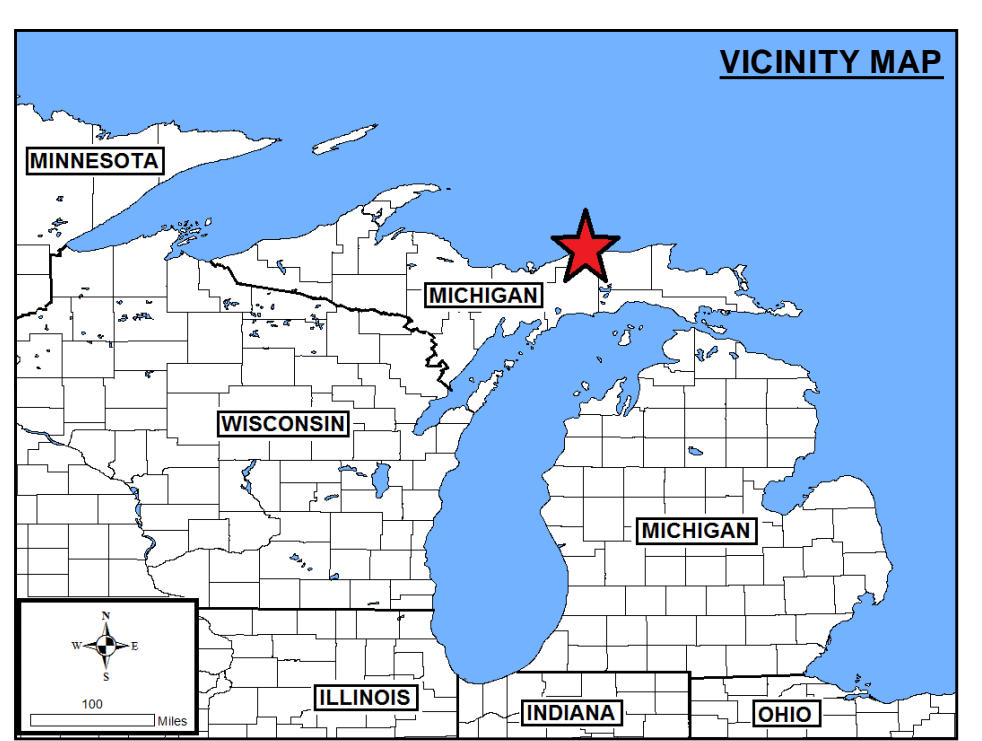
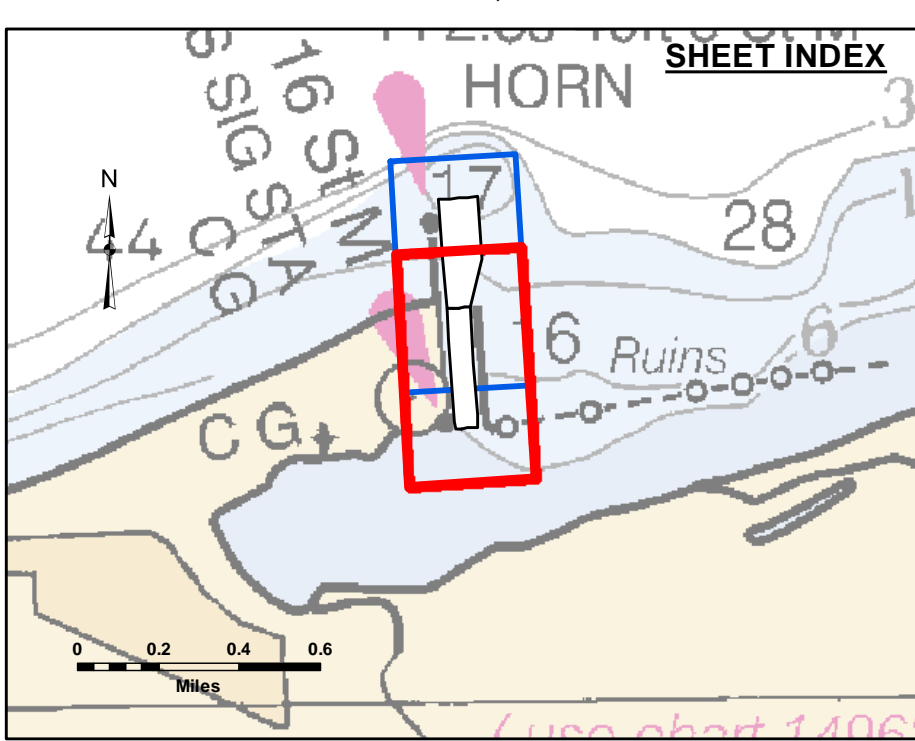


Disclaimer: The data represents the results of data collection and processing for a specific US Army Corps of Engineers activity and indicates the general existing conditions. Engineers assume and warrant the general existing conditions, readability, usability or suitability for any particular purpose of the data. The user is responsible for the accuracy, completeness, and reliability of the data for other than its intended purpose. The user is responsible for the accuracy, completeness, and reliability of the data for other than its intended purpose. These data are provided to the recipient for their use and are not to be used for any other purpose without the express written consent of the US Army Corps of Engineers. The recipient may not transfer these data to others without also transferring this Disclaimer.

U.S. ARMY CORPS OF ENGINEERS DETROIT DISTRICT		
Submitted:	Surveyed By:	
Recommended:	Plotted By:	
Approved:	Checked By:	
	Chief, Survey Section	
	Chief, Technical Services	

Grand Marais Harbor, MI
Grand Marais Harbor
GR_01_MAS_20200806_CS
06 August 2020

Sheet Reference Number
2 of 2

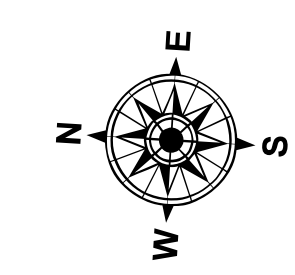


LEGEND

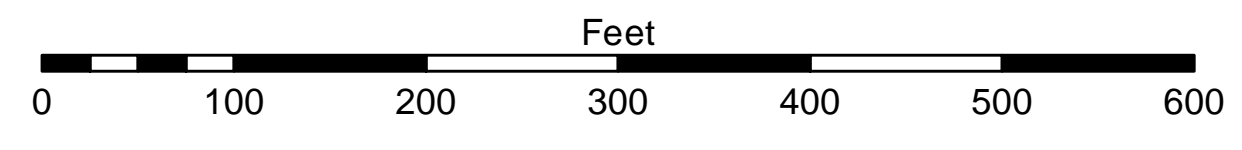
- Cable Submarine
- - - Cable Overhead
- Placement Area
- ⊥ Beacon, General
- Contour Lines
- ▭ Channel Limits

SOUNDING LEGEND

- LESS THAN PROJECT DEPTH
- PROJECT DEPTH
- PROJECT DEPTH +1'
- PROJECT DEPTH +2'
- PROJECT DEPTH +3'
- PROJECT DEPTH +4'
- PROJECT DEPTH +5'



1 inch = 100 feet



NOTES:

- 1) THE INFORMATION DEPICTED ON THIS MAP REPRESENTS THE RESULTS OF SURVEYS MADE ON DATED LISTED AND CAN ONLY BE CONSIDERED AS INDICATING THE GENERAL CONDITIONS PRESENT AT THAT TIME.
- 2) ELEVATIONS AND SOUNDING DEPTHS ARE REFERRED TO INTERNATIONAL GREAT LAKES DATUM 1985 (IGLD 85). LOW WATER DATUM (LWD) ZERO IS 691.1 FEET ABOVE MEAN WATER LEVEL AT POINT RIMOUSKI QUEBEC. WATER LEVEL READINGS ARE FROM A GAUGE LOCATED AT GRAND MARAIS, MI. DEPTHS ARE MEASURED USING AN ODOM ECHOTRAC E20 SINGLEBEAM SOUNDER.
- 3) HORIZONTAL POSITIONING IS DETERMINED USING A TRIMBLE SPS461 SUB-METER DGPS RECEIVER.
- 4) GRID COORDINATES ARE BASED ON THE MICHIGAN STATE PLANE COORDINATE SYSTEM, LAMBERT PROJECTION, MICHIGAN NORTH ZONE (2111), NORTH AMERICAN DATUM 1983 (NAD83). ALL COORDINATES SHOWN ARE IN U.S. SURVEY FEET.
- 5) THE LOCATION OF NAVIGATION AIDS REPRESENT THEIR GENERAL LOCATION AND CANNOT BE CONSIDERED FOR NAVIGATION.

IMAGERY SOURCED : ESRI