

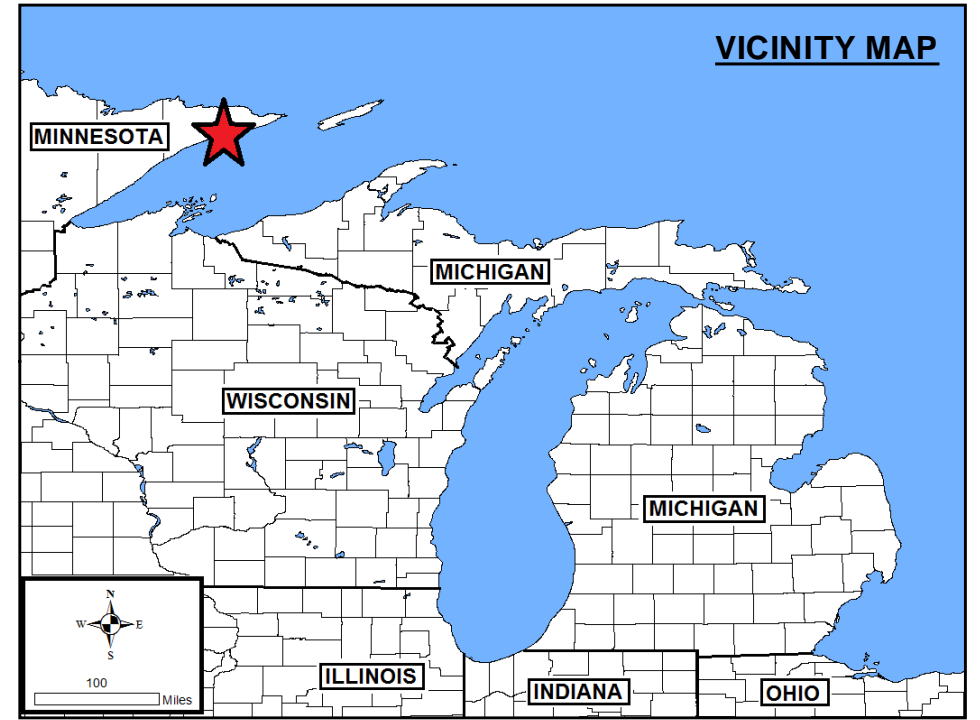
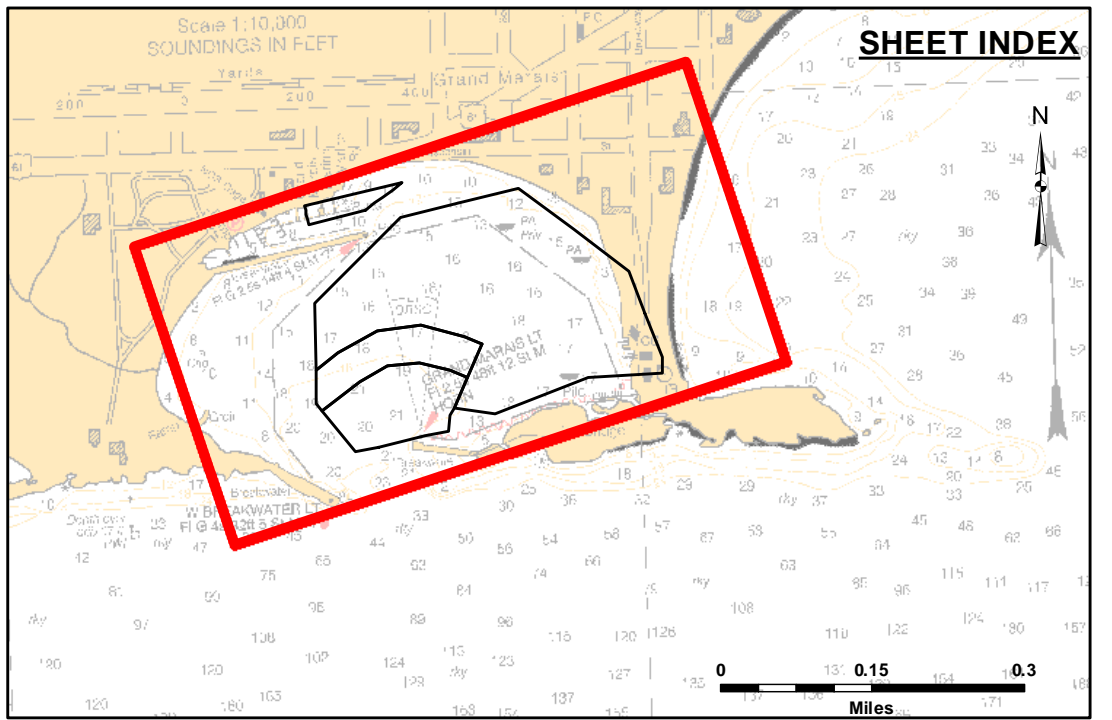
**Disclaimer:** The data represents the results of data collection processing for a specific US Army Corps of Engineers activity and indicates the general existing conditions. Engineers assume no liability for the accuracy, completeness, or implied concerning the accuracy, completeness, or reliability of the data for other than its intended purpose. The user is responsible for the accuracy of any of the application of the data for other than its intended purpose.

**Access Constraints:** The United States Government furnishes these data and the recipient accepts and uses them with the express understanding that they are not to be distributed, reproduced, expressed, or implied concerning the accuracy, completeness, or reliability of the data for other than its intended purpose of the recipient. These data belong to the Government. Therefore the recipient may not transfer, disseminate, or otherwise use these data to others without also transferring this Disclaimer.

U.S. ARMY CORPS OF ENGINEERS DETROIT DISTRICT		
Submitted:	Surveyed By:	
Recommended:	Plotted By:	
Approved:	Chief, Survey Section	Chief, Technical Services

**GRAND MARAIS HARBOR, MN**  
Grand Marais Harbor  
GD\_01\_MAS\_20210317\_CS  
17 March 2021

**Sheet Reference Number**  
1 of 1

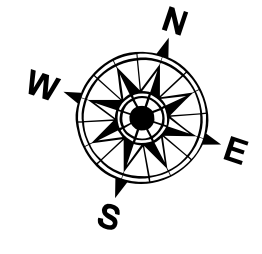


**LEGEND**

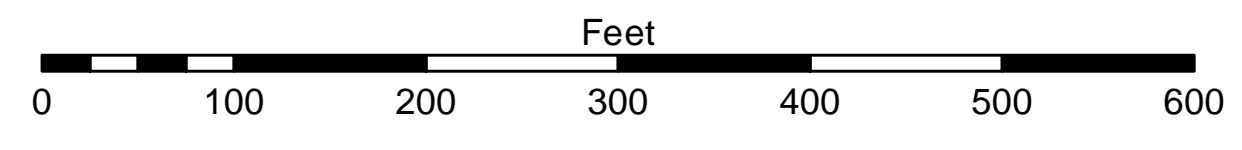
- ..... Cable Submarine
- - - Cable Overhead
- Placement Area
- Contour Lines
- ▭ Channel Limits

**SOUNDING LEGEND**

- LESS THAN PROJECT DEPTH
- PROJECT DEPTH
- PROJECT DEPTH +1'
- PROJECT DEPTH +2'
- PROJECT DEPTH +3'
- PROJECT DEPTH +4'
- PROJECT DEPTH +5'



1 inch = 100 feet



**NOTES:**

- 1) THE INFORMATION DEPICTED ON THIS CHART REPRESENTS THE RESULTS OF SURVEYS MADE ON THE DATE INDICATED AND CAN ONLY BE CONSIDERED AS INDICATING THE GENERAL CONDITIONS PRESENT AT THAT TIME.
- 2) SOUNDING DEPTHS ARE REFERENCED TO INTERNATIONAL GREAT LAKES DATUM 1985 (IGLD 85) LOW WATER DATUM ELEVATION 601.1 FEET ABOVE MEAN WATER LEVEL AT RIMOUSKI, QUEBEC. WATER LEVEL READINGS WERE OBTAINED WITH RTK GPS VALUES THAT HAVE BEEN VERIFIED TO MATCH AN AUTOMATED NOAA GAGE LOCATED AT GRAND MARAIS, MINNESOTA (9099090). DEPTHS ARE MEASURED USING A TELEDYNE ECHOTRAC E20 PORTABLE SURVEY SOUNDER.
- 3) HORIZONTAL POSITIONING IS DETERMINED USING REAL TIME KINEMATIC (RTK) GLOBAL NAVIGATION SATELLITE SYSTEM (GNSS) CORRECTIONS FROM A BASE STATION LOCATED AT USACE CONTROL POINT 614. A CHISELED 'X' ON THE EAST END OF A STEEL SHEET PILE WALL ALONG THE NORTH SIDE OF THE BOAT RAMP. THE GPS RECEIVER IS MANUFACTURED BY TRIMBLE, MODELS SPA751 AND R10.
- 4) THE GRID COORDINATE SYSTEM SHOWN IS REFERENCED TO THE MINNESOTA STATE PLANE COORDINATE SYSTEM, LAMBERT PROJECTION, NORTH ZONE (2201), NORTH AMERICAN DATUM 1983 (NAD 83), US SURVEY FOOT.
- 5) PROJECT DEPTHS FOR THIS AREA ARE 8', 16', 18' & 20'