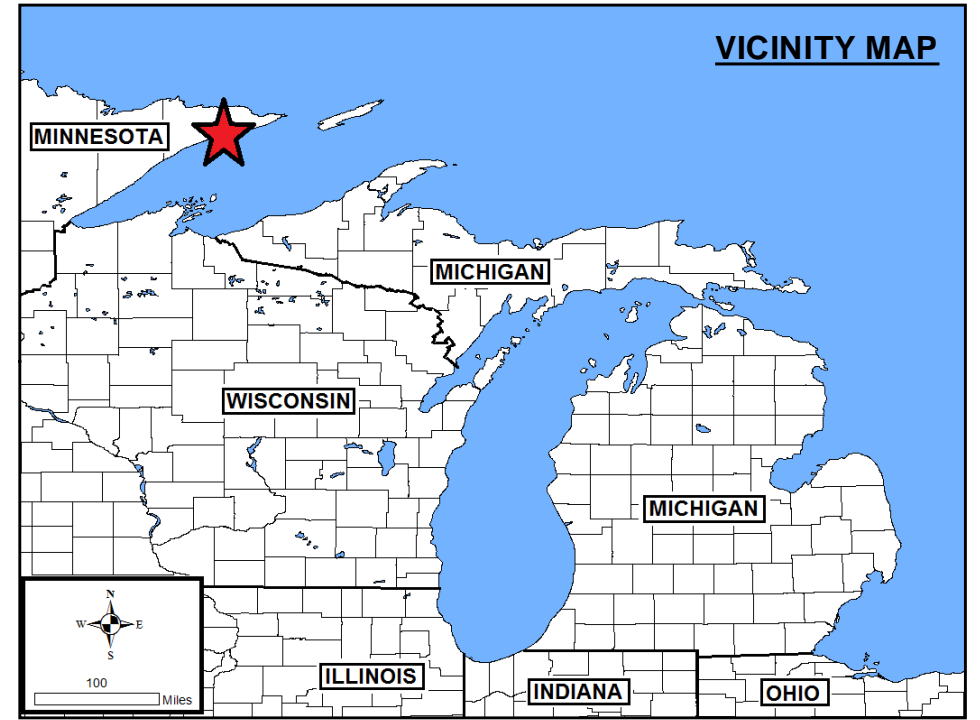
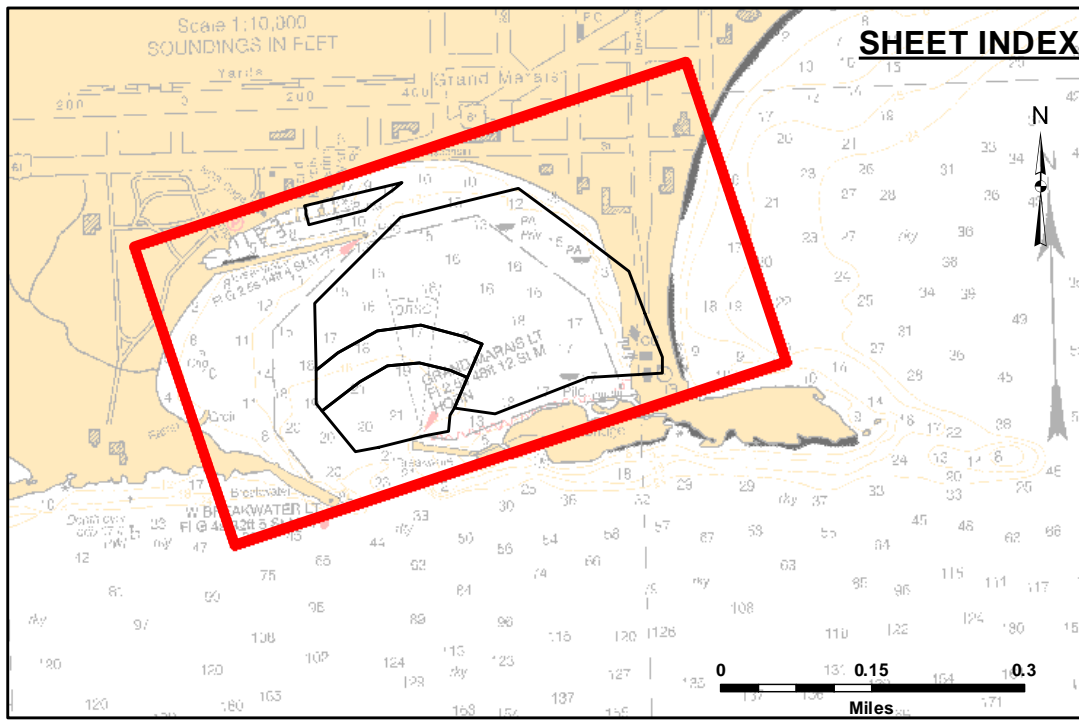


DISCLAIMER: The data represented by the symbols of data collection on this chart represents the results of data collection for a specific US Army Corps of Engineers project and is not intended for general use. The user is responsible for the accuracy of the data for other than its intended purpose. The United States Government disclaims any liability for the use of this data for any purpose other than that for which it was intended. These data are provided for informational purposes only and are not to be used for any other purpose. The user is responsible for the accuracy of the data for other than its intended purpose. The user is responsible for the accuracy of the data for other than its intended purpose.

U.S. ARMY CORPS OF ENGINEERS DETROIT DISTRICT		
Submitted:	Surveyed By:	
Recommended:	Plotted By:	
Approved:	Chief, Survey Section	
	Chief, Technical Services	

GRAND MARAIS HARBOR, MN
Grand Marais Harbor
GD_01_MAS_20201014_CS
14 October 2020

Sheet Reference Number
1 of 1

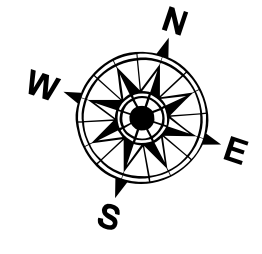


LEGEND

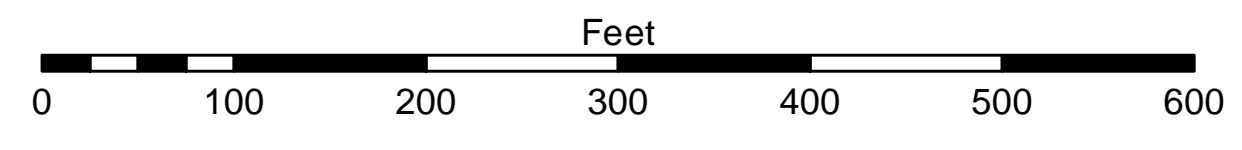
- Cable Submarine
- - - Cable Overhead
- Placement Area
- Contour Lines
- ▭ Channel Limits

SOUNDING LEGEND

- LESS THAN PROJECT DEPTH
- PROJECT DEPTH
- PROJECT DEPTH +1'
- PROJECT DEPTH +2'
- PROJECT DEPTH +3'
- PROJECT DEPTH +4'
- PROJECT DEPTH +5'



1 inch = 100 feet



- NOTES:**
- 1) THE INFORMATION DEPICTED ON THIS CHART REPRESENTS THE RESULTS OF SURVEYS MADE ON THE DATE INDICATED AND CAN ONLY BE CONSIDERED AS INDICATING THE GENERAL CONDITIONS PRESENT AT THAT TIME.
 - 2) SOUNDING DEPTHS ARE REFERENCED TO INTERNATIONAL GREAT LAKES DATUM 1985 (IGLD 85) LOW WATER DATUM ELEVATION 601.1 FEET ABOVE MEAN WATER LEVEL AT RIMOUSKI QUEBEC. WATER LEVEL READINGS WERE OBTAINED WITH RTK GPS VALUES THAT HAVE BEEN VERIFIED TO MATCH AN AUTOMATED NOAA GAGE LOCATED AT GRAND MARAIS, MINNESOTA (9099090). DEPTHS ARE MEASURED USING A ROSS LABORATORIES MODEL 825C PORTABLE SURVEY SOUNDING.
 - 3) HORIZONTAL POSITIONING IS DETERMINED USING REAL TIME KINEMATIC (RTK) GLOBAL NAVIGATION SATELLITE SYSTEM (GNSS) CORRECTIONS FROM A BASE STATION LOCATED AT USAGE CONTROL POINT 614. A CHISELED "X" ON THE EAST END OF A STEEL SHEET PILE WALL ALONG THE NORTH SIDE OF THE BOAT RAMP. THE GPS RECEIVER IS MANUFACTURED BY TRIMBLE, MODELS SPA751 AND R10.
 - 4) THE GRID COORDINATE SYSTEM SHOWN IS REFERENCED TO THE MINNESOTA STATE PLANE COORDINATE SYSTEM, LAMBERT PROJECTION, NORTH ZONE (2201), NORTH AMERICAN DATUM 1983 (NAD 83), US SURVEY FOOT.
 - 5) PROJECT DEPTHS FOR THIS AREA ARE 6', 16', 18' & 20'.