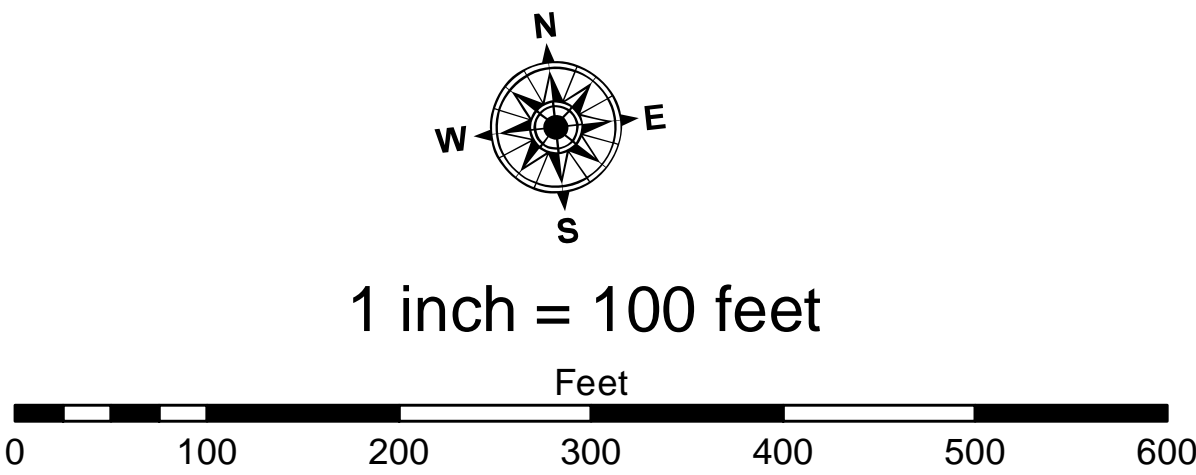


- LEGEND**
- ..... Cable Submarine
  - - - Cable Overhead
  - ⊥ Beacon, General
  - Contour Lines
  - ▭ Channel Limits

- SOUNDING LEGEND**
- LESS THAN PROJECT DEPTH
  - PROJECT DEPTH
  - PROJECT DEPTH +1'
  - PROJECT DEPTH +2'
  - PROJECT DEPTH +3'
  - PROJECT DEPTH +4'
  - PROJECT DEPTH +5'



- NOTES:**
1. ALL SOUNDINGS ARE REFERENCED TO I.G.L.D. 1985 FOR LAKE MICHIGAN. ELEVATION 577.5 FT. ABOVE MEAN SEA LEVEL AT RIMOUSKI, QUEBEC.
  2. GRID SYSTEM BASED ON LAMBERT PROJECTION, MICHIGAN STATE PLANE COORDINATE SYSTEM, CENTRAL ZONE (2112) 1983 NORTH AMERICAN DATUM, U.S. FOOT.
  3. THE INFORMATION DEPICTED ON THIS MAP REPRESENTS THE RESULTS OF SURVEYS MADE ON THE DATES INDICATED AND CAN ONLY BE CONSIDERED AS INDICATING THE GENERAL CONDITIONS EXISTING AT THAT TIME.
  4. VERTICAL WATER LEVEL READINGS WERE TAKEN FROM A FIXED GAUGE MARK ALONG THE SHEET STEEL WALL NEAR CROSS SECTION 12+00E IN FRANKFORT HARBOR, MI.
  5. PROJECT DEPTH = 24.0-18.0 FEET
  6. POSITIONING METHOD: APPLANIX POS M/V WITH MARINESTAR GNSS G2 MOTION COMPENSATION: APPLANIX OCEAN MASTER POS M/V EQUIPMENT: R2SONIC 2024 MULTIBEAM SOUNDER SOFTWARE: HYPACK VESSEL: 3058

Frankfort Harbor, MI  
Frankfort Harbor  
FR\_01\_ANK\_20221003\_CS  
03 October 2022

Sheet  
Reference  
Number  
1 of 2

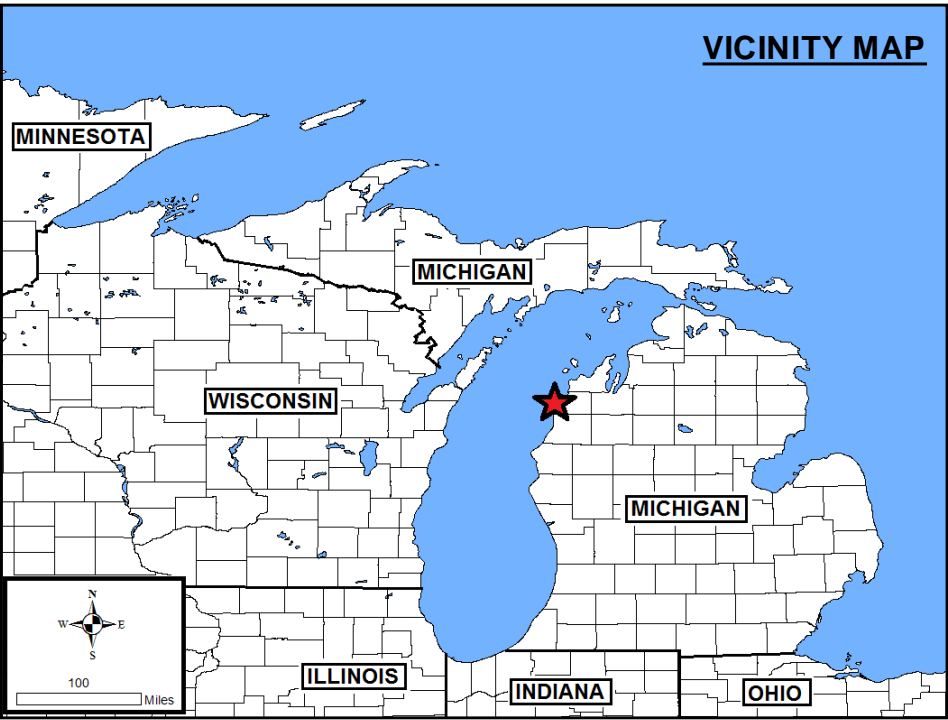
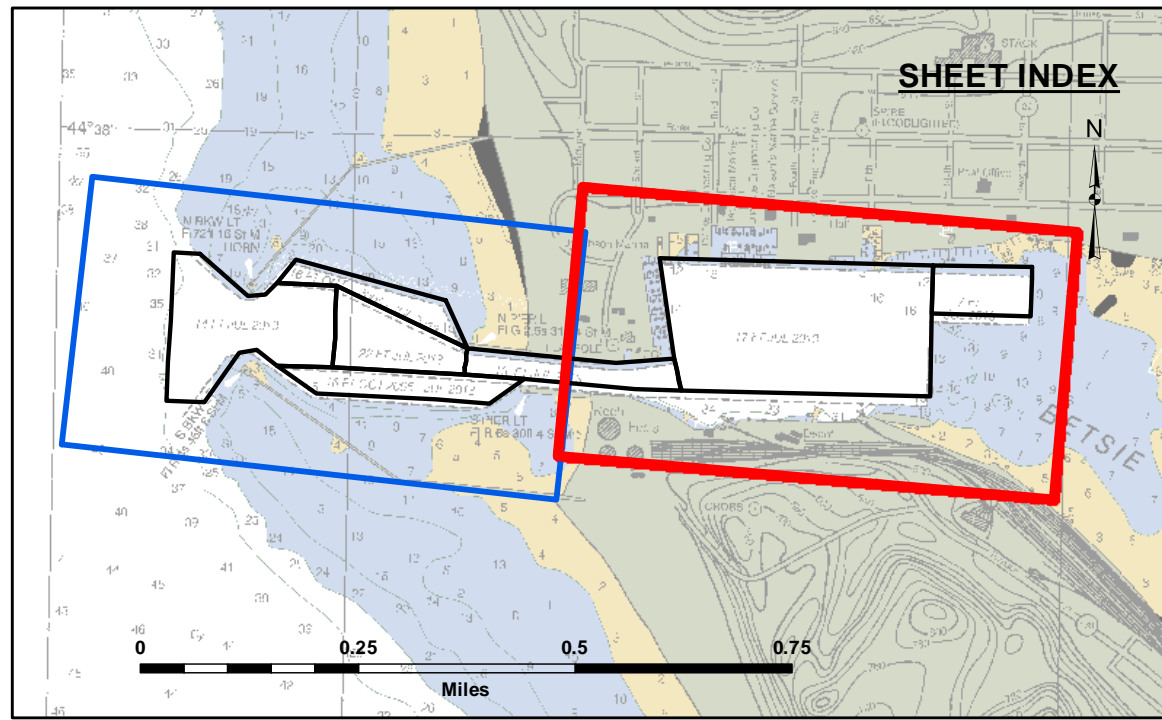
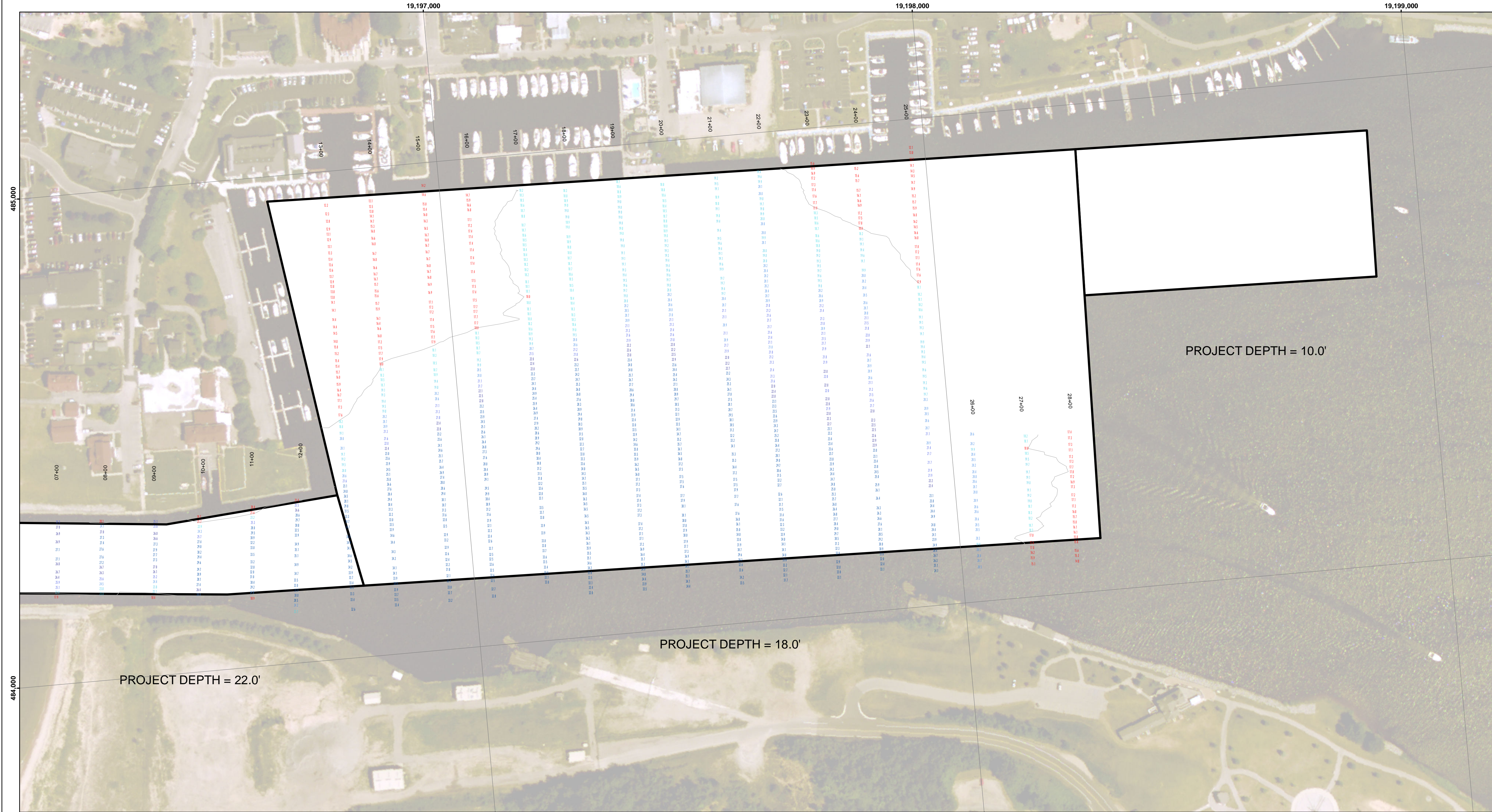
Revision Number:  
4.2-202004030



DISCLAIMER: The data represents the results of data collection and processing for a specific project. The data is provided for informational purposes only and is not intended for use in any other manner. The data is not to be used for any purpose other than that for which it was collected. The data is not to be used for any purpose other than that for which it was collected. The data is not to be used for any purpose other than that for which it was collected.

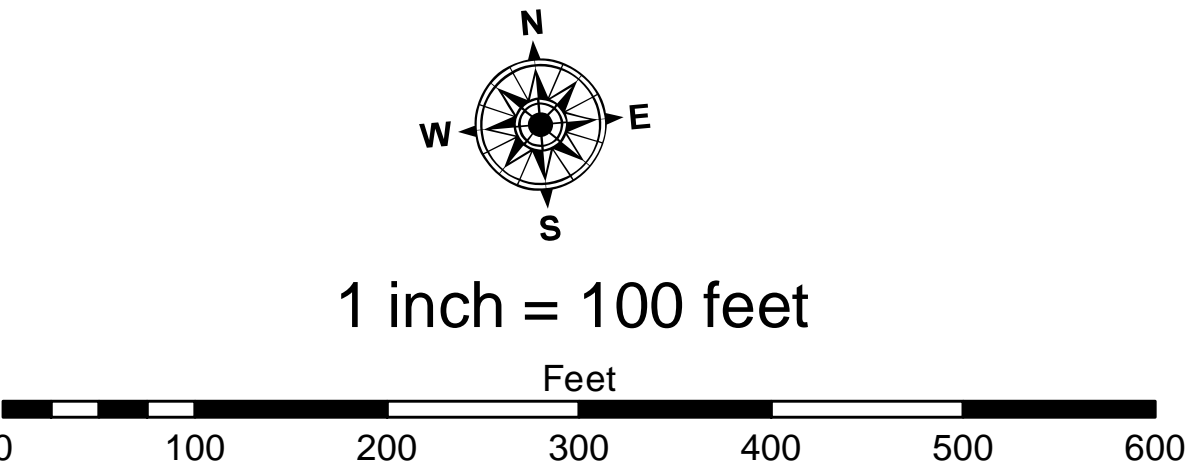
U.S. ARMY CORPS OF ENGINEERS DETROIT DISTRICT	Surveyed By:
	Plotted By:
	Checked By:





- LEGEND**
- ..... Cable Submarine
  - - - Cable Overhead
  - └ Beacon, General
  - Contour Lines
  - ▭ Channel Limits

- SOUNDING LEGEND**
- LESS THAN PROJECT DEPTH
  - PROJECT DEPTH
  - PROJECT DEPTH +1'
  - PROJECT DEPTH +2'
  - PROJECT DEPTH +3'
  - PROJECT DEPTH +4'
  - PROJECT DEPTH +5'



- NOTES:**
1. ALL SOUNDINGS ARE REFERENCED TO I.G.L.D. 1985 FOR LAKE MICHIGAN. ELEVATION 577.5 FT. ABOVE MEAN SEA LEVEL AT RIMOUSKI, QUEBEC.
  2. GRID SYSTEM BASED ON LAMBERT PROJECTION, MICHIGAN STATE PLANE COORDINATE SYSTEM, CENTRAL ZONE (2112) 1983 NORTH AMERICAN DATUM, U.S. FOOT.
  3. THE INFORMATION DEPICTED ON THIS MAP REPRESENTS THE RESULTS OF SURVEYS MADE ON THE DATES INDICATED AND CAN ONLY BE CONSIDERED AS INDICATING THE GENERAL CONDITIONS EXISTING AT THAT TIME.
  4. VERTICAL WATER LEVEL READINGS WERE TAKEN FROM A FIXED GAUGE MARK ALONG THE SHEET STEEL WALL NEAR CROSS SECTION 12+00E IN FRANKFORT HARBOR, MI.
  5. PROJECT DEPTH = 24.0-18.0 FEET
  6. POSITIONING METHOD: APPLANIX POS M/V WITH MARINESTAR GNSS G2 MOTION COMPENSATION: APPLANIX OCEAN MASTER POS M/V EQUIPMENT: R2SONIC 2024 MULTIBEAM SOUNDER SOFTWARE: HYPACK VESSEL: 3058

Frankfort Harbor, MI  
Frankfort Harbor  
FR\_01\_ANK\_20221003\_CS  
03 October 2022

Sheet  
Reference  
Number  
2 of 2

Revision Number:  
4.2-2020/04/20

U.S. ARMY CORPS OF ENGINEERS  
DETROIT DISTRICT

Submitted:

Surveyed By:

Recommended:

Plotted By:

Approved:

Checked By:

DISCLAIMER: The data on this map represents the results of data collection and processing for a specific project. The U.S. Army Corps of Engineers actively and continuously monitors the general existing conditions of the project area. The data on this map is not intended to be used for any purpose other than that for which it was collected. The user is responsible for the results of any application of the data for other than its intended purpose.

US Army Corps of Engineers  
District: CELRE