

**LEGEND**

- ..... Cable Submarine
- - - Cable Overhead
- └ Beacon, General
- Contour Lines
- ▭ Channel\_Limits

**SOUNDING LEGEND**

- LESS THAN PROJECT DEPTH
- PROJECT DEPTH
- PROJECT DEPTH +1'
- PROJECT DEPTH +2'
- PROJECT DEPTH +3'
- PROJECT DEPTH +4'
- PROJECT DEPTH +5'

**1 inch = 100 feet**

Feet

0 100 200 300 400 500 600

North Arrow

- NOTES:**
- 1) ALL SOUNDINGS ARE REFERENCED TO I.G.L.D. 1985 FOR LAKE MICHIGAN, ELEVATION 577.5 FT. ABOVE MEAN SEA LEVEL AT RIMOUSKI, QUEBEC. HYDRAULIC CORRECTOR OF 0.3 APPLIED
  - 2) GRID SYSTEM BASED ON LAMBERT PROJECTION, MICHIGAN STATE PLANE COORDINATE SYSTEM, CENTRAL ZONE (2112) 1983 NORTH AMERICAN DATUM, U.S. FOOT.
  - 3) THE INFORMATION DEPICTED ON THIS MAP REPRESENTS THE RESULTS OF SURVEYS MADE ON THE DATES INDICATED AND CAN ONLY BE CONSIDERED AS INDICATING THE GENERAL CONDITIONS EXISTING AT THAT TIME.
  - 4) VERTICAL WATER LEVEL READINGS WERE TAKEN FROM A FIXED GAUGE MARK ALONG THE SHEET STEEL WALL NEAR CROSS SECTION 12+00E IN FRANKFORT HARBOR, MI.
  - 5) POSITIONING METHOD: APPLANIX POS M/V WITH MARINESTAR GNSS G2 MOTION COMPENSATION; APPLANIX OCEAN MASTER POS M/V EQUIPMENT: ODOM CV III SINGLE BEAM SOUNDER SOFTWARE: HYPACK VESSEL: 3058

**US Army Corps of Engineers District: CELRE**

The data is liability. The data represents the results of data collection and is not a guarantee of accuracy. The data is for informational purposes only and is not to be used for any other purpose. Engineers actively and indicates the general existing conditions. The data is not a guarantee of accuracy. The data is for informational purposes only and is not to be used for any other purpose. The data is liability. The data represents the results of data collection and is not a guarantee of accuracy. The data is for informational purposes only and is not to be used for any other purpose. The data is liability. The data represents the results of data collection and is not a guarantee of accuracy. The data is for informational purposes only and is not to be used for any other purpose.

**U.S. ARMY CORPS OF ENGINEERS DETROIT DISTRICT**

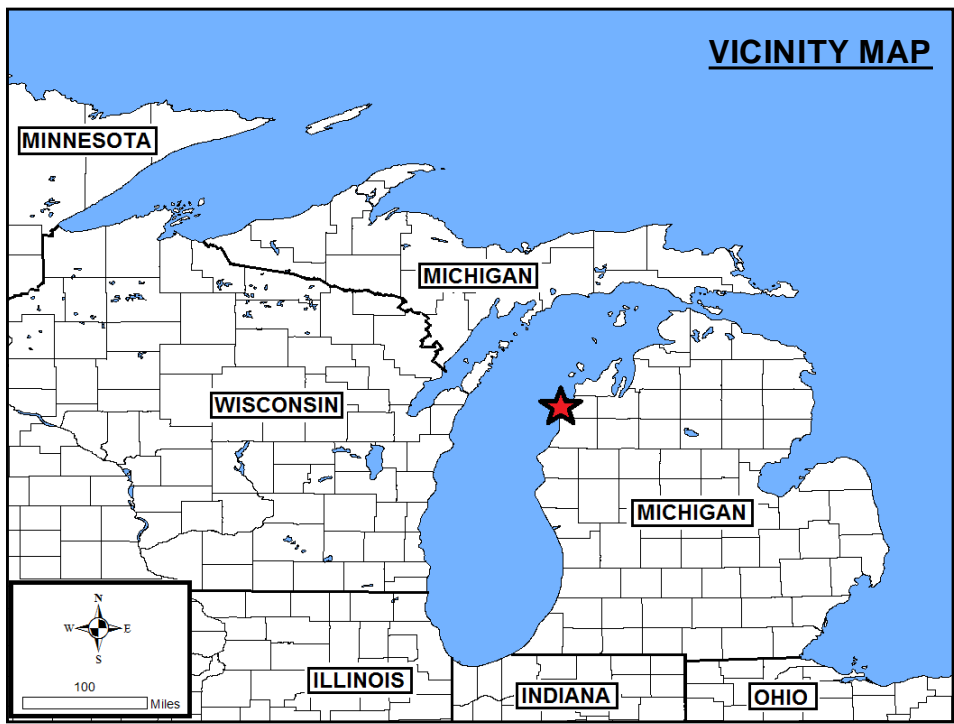
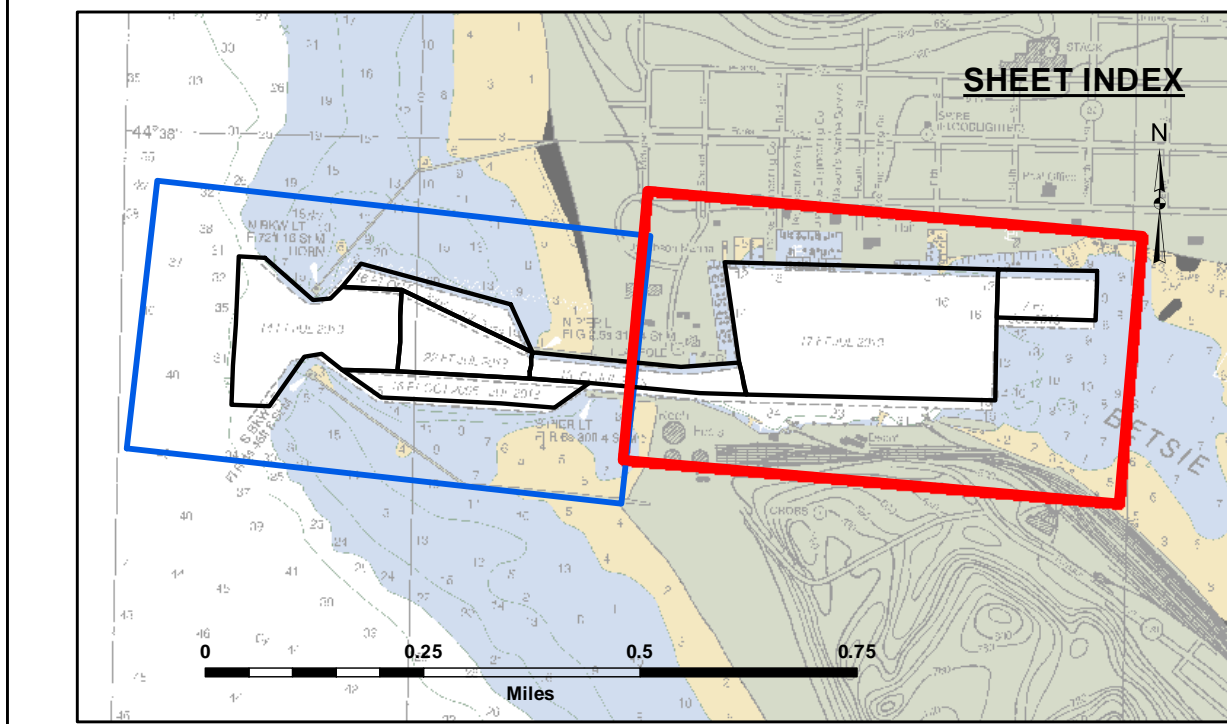
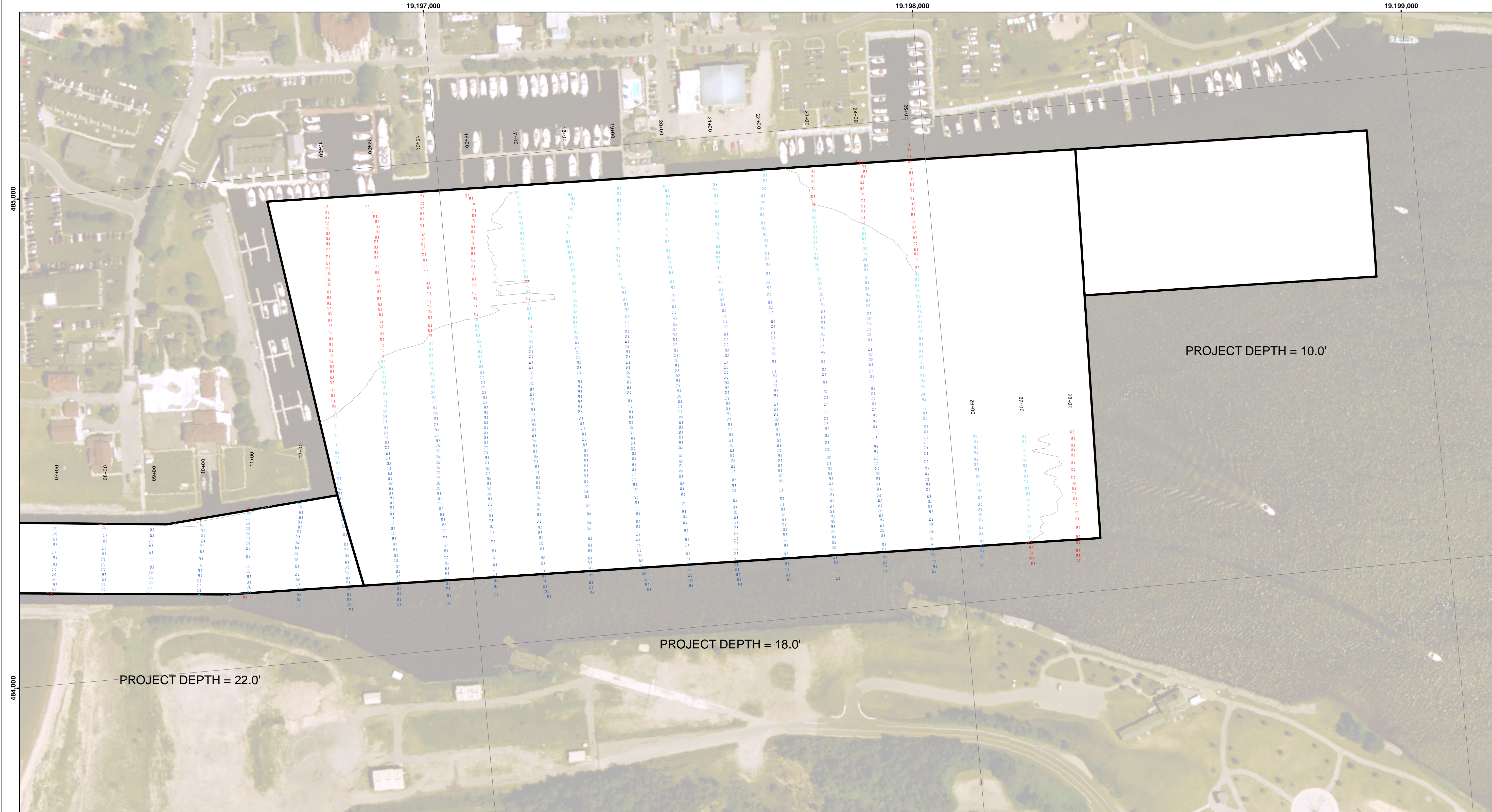
Submitted:	Surveyed By:
Recommended:	Plotted By:
Approved:	Checked By:

Chief, Survey Section  
Chief, Technical Services

**Frankfort Harbor, MI  
Frankfort Harbor  
FR\_01\_ANK\_20200925\_CS  
25 September 2020**

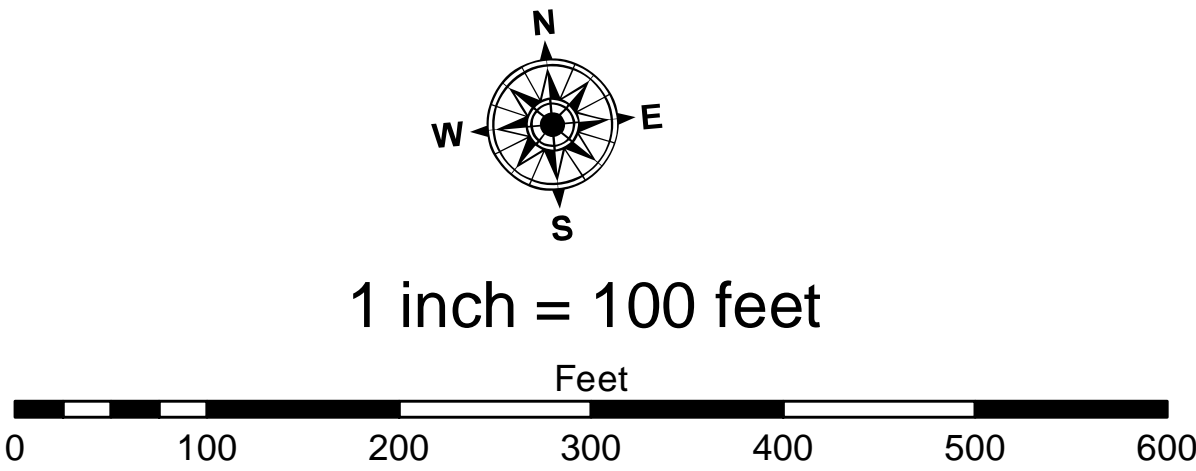
**Sheet Reference Number  
1 of 2**





- LEGEND**
- ..... Cable Submarine
  - - - Cable Overhead
  - └ Beacon, General
  - Contour Lines
  - ▭ Channel Limits

- SOUNDING LEGEND**
- LESS THAN PROJECT DEPTH
  - PROJECT DEPTH
  - PROJECT DEPTH +1'
  - PROJECT DEPTH +2'
  - PROJECT DEPTH +3'
  - PROJECT DEPTH +4'
  - PROJECT DEPTH +5'



- NOTES:**
- 1) ALL SOUNDINGS ARE REFERENCED TO I.G.L.D. 1985 FOR LAKE MICHIGAN, ELEVATION 577.5 FT. ABOVE MEAN SEA LEVEL AT RIMOUSKI, QUEBEC. HYDRAULIC CORRECTOR OF 0.3 APPLIED
  - 2) GRID SYSTEM BASED ON LAMBERT PROJECTION, MICHIGAN STATE PLANE COORDINATE SYSTEM, CENTRAL ZONE (2112) 1983 NORTH AMERICAN DATUM, U.S. FOOT.
  - 3) THE INFORMATION DEPICTED ON THIS MAP REPRESENTS THE RESULTS OF SURVEYS MADE ON THE DATES INDICATED AND CAN ONLY BE CONSIDERED AS INDICATING THE GENERAL CONDITIONS EXISTING AT THAT TIME.
  - 4) VERTICAL WATER LEVEL READINGS WERE TAKEN FROM A FIXED GAUGE MARK ALONG THE SHEET STEEL WALL NEAR CROSS SECTION 12+00E IN FRANKFORT HARBOR, MI.
  - 5) POSITIONING METHOD: APPLANIX POS M/V WITH MARINESTAR GNSS G2 MOTION COMPENSATION; APPLANIX OCEAN MASTER POS M/V EQUIPMENT: ODOM CV III SINGLE BEAM SOUNDER SOFTWARE: HYPACK VESSEL: 3058

Frankfort Harbor, MI  
Frankfort Harbor  
FR\_01\_ANK\_20200925\_CS  
25 September 2020

Sheet  
Reference  
Number  
2 of 2

Revision Number:  
4.1-20191105

U.S. ARMY CORPS OF ENGINEERS DETROIT DISTRICT			
Submitted:	Surveyed By:		
Recommended:	Plotted By:		
Approved:	Checked By:		

**DISCLAIMER:** The data represents the results of data collection and is not intended for use in any other manner than that for which it was collected. The data is not intended for use in any other manner than that for which it was collected. The data is not intended for use in any other manner than that for which it was collected.

