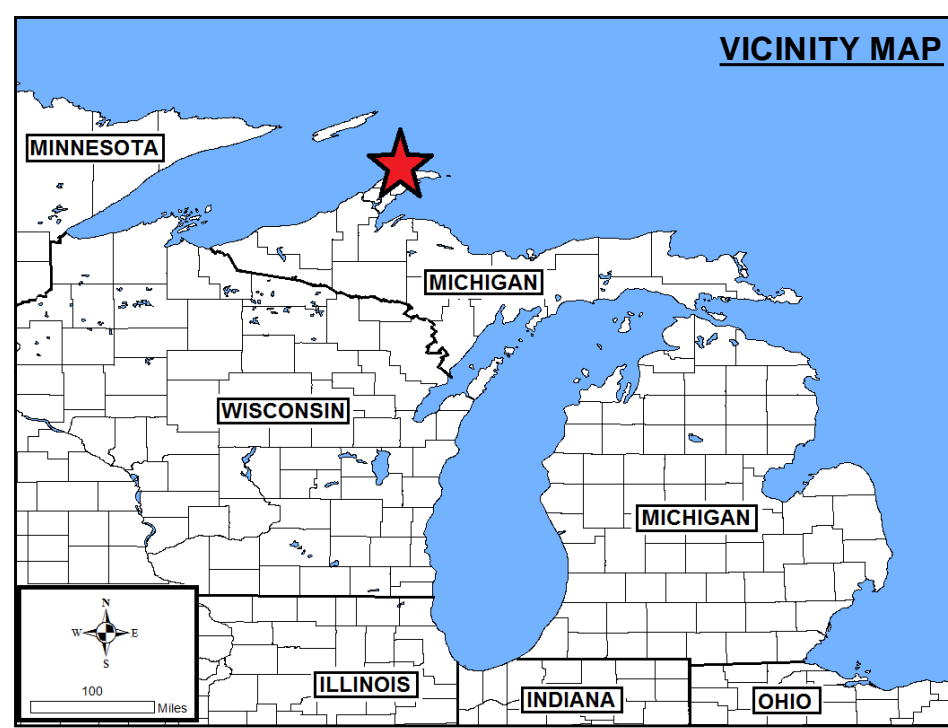
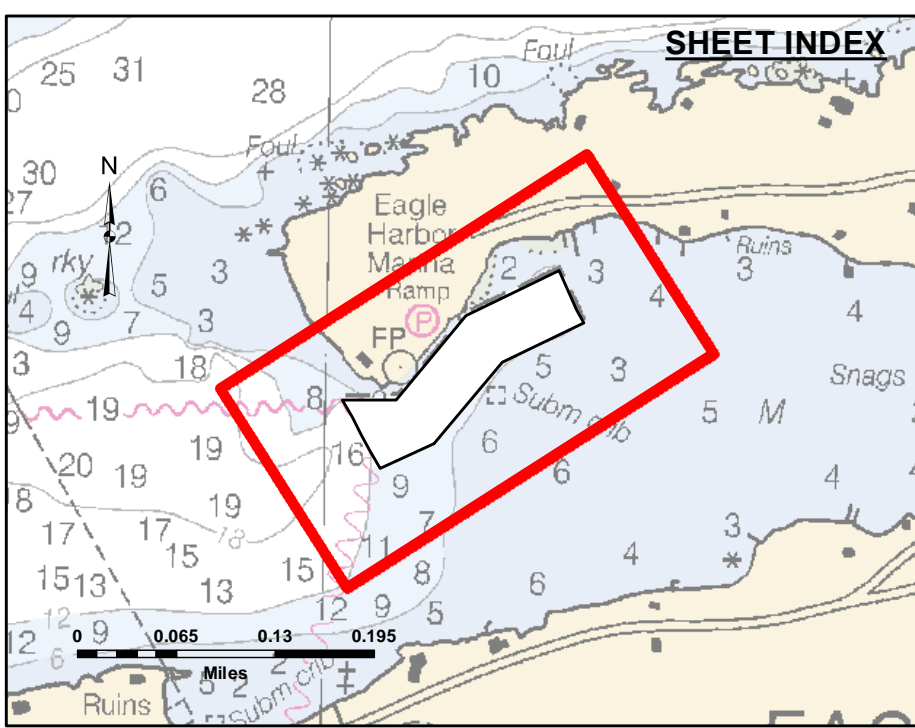


**DISCLAIMER:** The data represents the results of data collection and processing for a specific US Army Corps of Engineers activity and indicates the general existing conditions, as of the date of collection. The user is responsible for the accuracy, reliability, or suitability for any particular purpose of the data. The user is responsible for the accuracy, reliability, or suitability for any particular purpose of the data. The user is responsible for the accuracy, reliability, or suitability for any particular purpose of the data. The user is responsible for the accuracy, reliability, or suitability for any particular purpose of the data.

U.S. ARMY CORPS OF ENGINEERS DETROIT DISTRICT		
Submitted By:	Surveyed By:	
Recommended By: Chief, Survey Section	Plotted By:	
Approved By:	Checked By:	

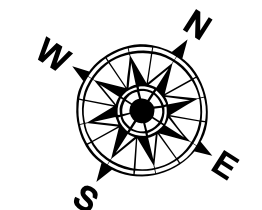
Eagle Harbor, MI  
Eagle Harbor  
EA\_01\_GLE\_20210728\_CS  
28 July 2021

Sheet Reference Number  
1 of 1

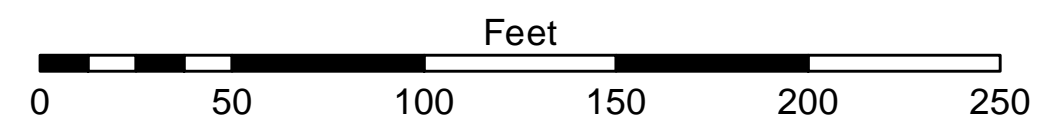


**LEGEND**  
— Contour Lines  
▭ Channel Limits

**SOUNDING LEGEND**  
■ LESS THAN PROJECT DEPTH  
■ PROJECT DEPTH  
■ PROJECT DEPTH +1'  
■ PROJECT DEPTH +2'  
■ PROJECT DEPTH +3'  
■ PROJECT DEPTH +4'  
■ PROJECT DEPTH +5'



1 inch = 50 feet



**NOTES:**  
 1) THE INFORMATION DEPICTED ON THIS MAP REPRESENTS THE RESULTS OF SURVEYS MADE ON THE DATE INDICATED AND CAN ONLY BE CONSIDERED AS INDICATING THE GENERAL CONDITIONS PRESENT AT THAT TIME.  
 2) SOUNDING DEPTHS ARE REFERENCED TO INTERNATIONAL GREAT LAKES DATUM 1985 (IGLD85) LOW WATER DATUM ELEVATION 601.1 FEET ABOVE MEAN WATER LEVEL AT RIMOUSKI, QUEBEC. WATER LEVEL READINGS WERE OBTAINED WITH RTK GPS VALUES. DEPTHS ARE MEASURED USING A TELEDYNE ECHOTRAC E20 PORTABLE SURVEY SOUNDER.  
 3) HORIZONTAL POSITIONING IS DETERMINED USING THE REAL TIME KINEMATIC (RTK) GLOBAL NAVIGATION SATELLITE SYSTEM (GNSS). CORRECTIONS ARE FROM A BASE STATION LOCATED AT USACE CONTROL POINT 1802. THE GPS RECEIVERS ARE MANUFACTURED BY TRIMBLE, MODELS SPA751 AND R10.  
 4) THE GRID COORDINATE SYSTEM SHOWN IS REFERENCED TO THE MICHIGAN STATE PLANE COORDINATE SYSTEM, LAMBERT PROJECTION, NORTH ZONE (2111), NORTH AMERICAN DATUM 1983 (NAD 83), US SURVEY FOOT.  
 5) THE PROJECT DEPTHS FOR THIS AREA ARE 8.0' AND 10.0'.