

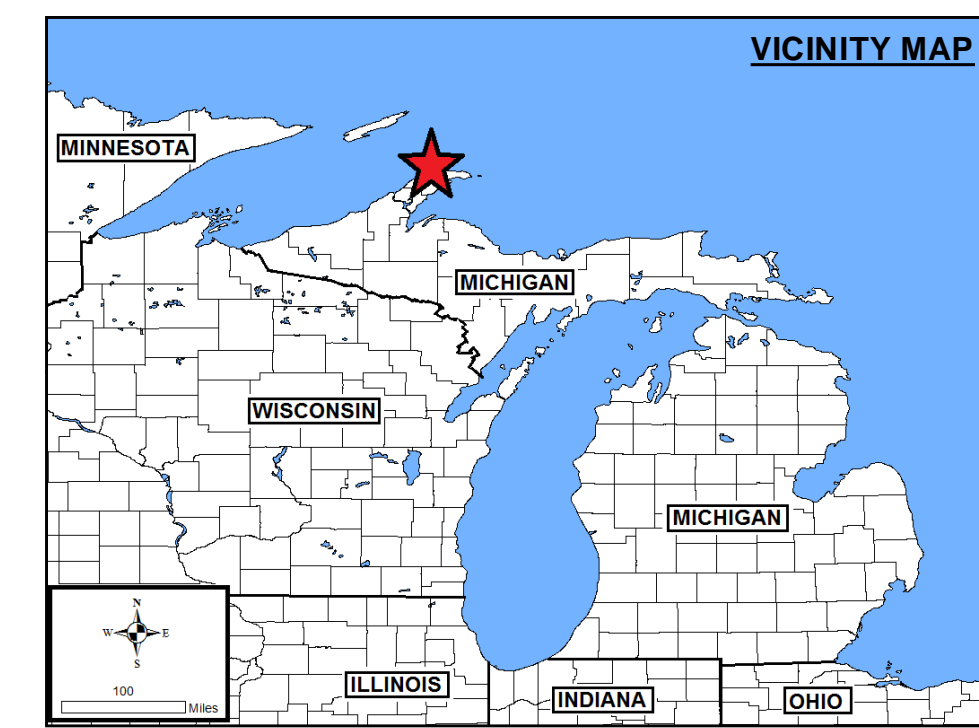
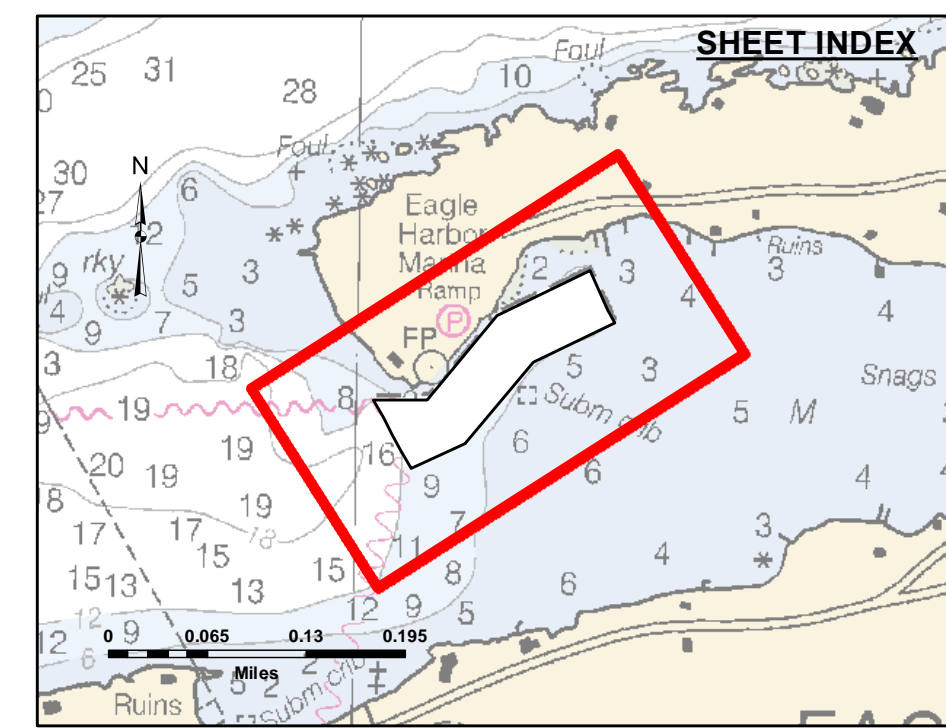
Disclaimer: The data represents the results of data collection for a specific project. The US Army Corps of Engineers does not warrant the accuracy, completeness, or reliability of the data for other than its intended purpose. The user is responsible for the accuracy of the data for any application of the data for other than its intended purpose.

Access Constraints: The United States Government furnishes this data and the recipient accepts and uses them with the express understanding that the data is provided for informational purposes only. The data is not to be used for any purpose other than that for which it was provided. The recipient may not transfer, disseminate, or otherwise use the data for any purpose other than that for which it was provided. The recipient may not transfer, disseminate, or otherwise use the data for any purpose other than that for which it was provided.

U.S. ARMY CORPS OF ENGINEERS DETROIT DISTRICT		
Submitted:	Surveyed By:	
Recommended:	Plotted By:	
Approved:	Chief, Survey Section	
	Chief, Technical Services	

Eagle Harbor, MI
Eagle Harbor
EA_01_GLE_20201028_CS
28 October 2020

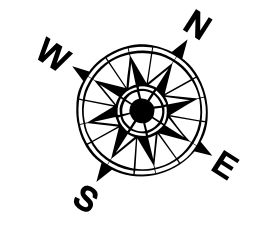
Sheet
Reference
Number
1 of 1



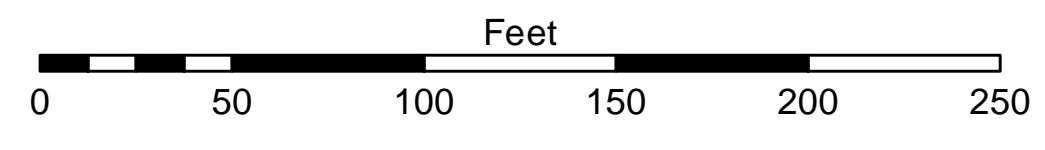
LEGEND
— Contour Lines
▭ Channel Limits

SOUNDING LEGEND

- LESS THAN PROJECT DEPTH
- PROJECT DEPTH
- PROJECT DEPTH +1'
- PROJECT DEPTH +2'
- PROJECT DEPTH +3'
- PROJECT DEPTH +4'
- PROJECT DEPTH +5'



1 inch = 50 feet



- NOTES:**
- 1) THE INFORMATION DEPICTED ON THIS MAP REPRESENTS THE RESULTS OF SURVEYS MADE ON THE DATE INDICATED AND CAN ONLY BE CONSIDERED AS INDICATING THE GENERAL CONDITIONS PRESENT AT THAT TIME.
 - 2) SOUNDING DEPTHS ARE REFERENCED TO INTERNATIONAL GREAT LAKES DATUM 1985 (IGLD85) LOW WATER DATUM ELEVATION 601.1 FEET ABOVE MEAN WATER LEVEL AT RIMOUSKI QUEBEC. WATER LEVEL READINGS WERE OBTAINED WITH RTK GPS VALUES. DEPTHS ARE MEASURED USING A ROSS LABS 825C PORTABLE SURVEY SOUNDING.
 - 3) HORIZONTAL POSITIONING IS DETERMINED USING THE REAL TIME KINEMATIC (RTK) GLOBAL NAVIGATION SATELLITE SYSTEM (GNSS). CORRECTIONS ARE FROM A BASE STATION LOCATED AT USACE CONTROL POINT 1602. THE GPS RECEIVERS ARE MANUFACTURED BY TRIMBLE, MODELS SPA751 AND R10.
 - 4) THE GRID COORDINATE SYSTEM SHOWN IS REFERENCED TO THE MICHIGAN STATE PLANE COORDINATE SYSTEM, LAMBERT PROJECTION, NORTH ZONE (2111), NORTH AMERICAN DATUM 1983 (NAD 83), US SURVEY FOOT.
 - 5) THE PROJECT DEPTHS FOR THIS AREA ARE 8.0' AND 10.0'.
 - 6) IMAGERY SOURCED - ESRI