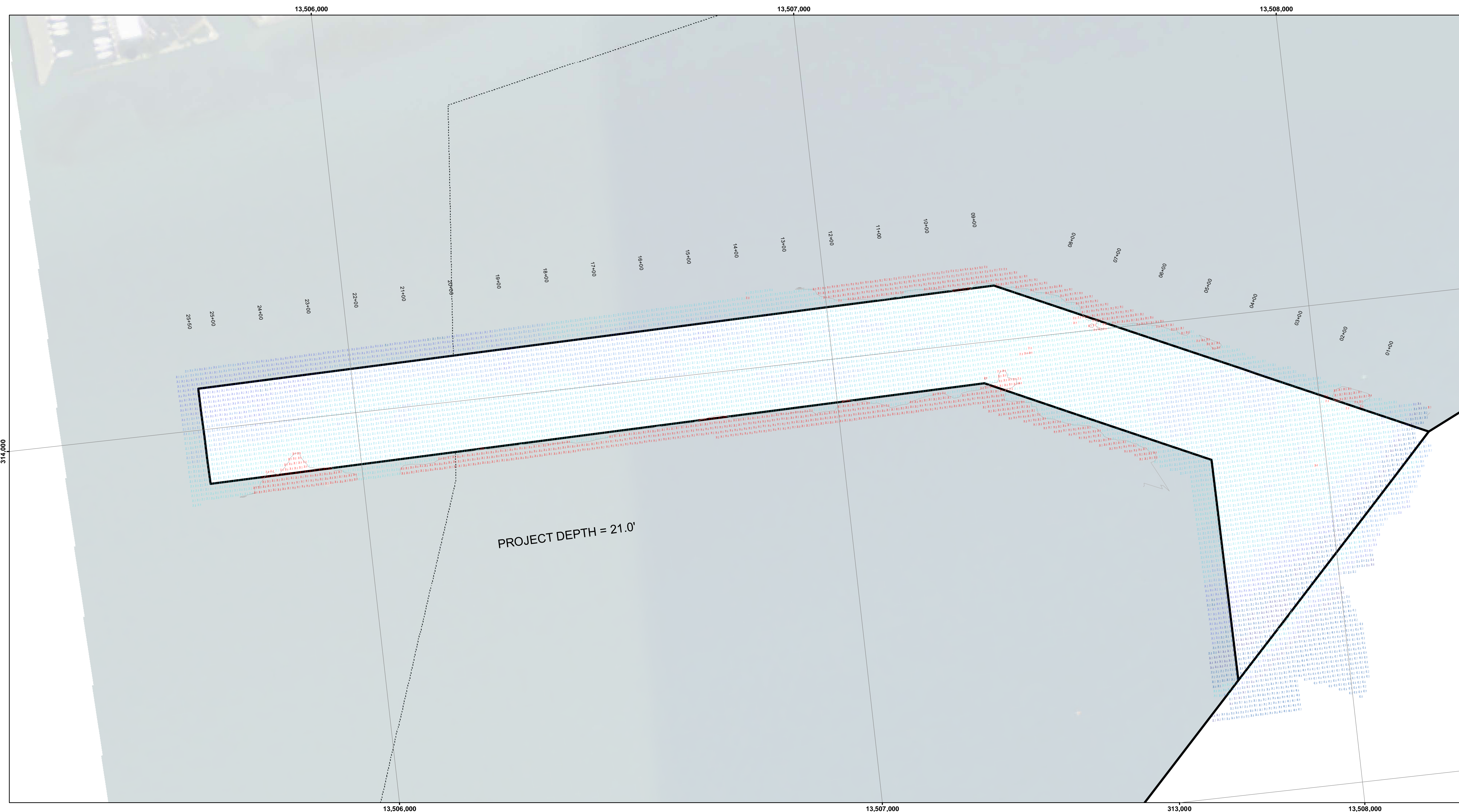


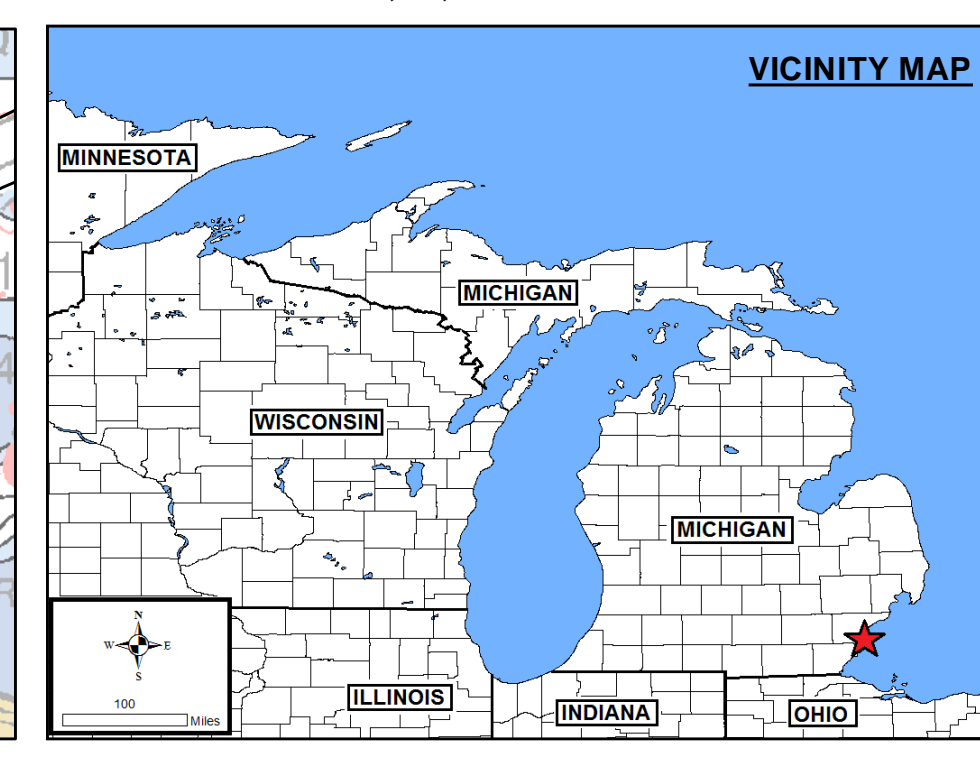
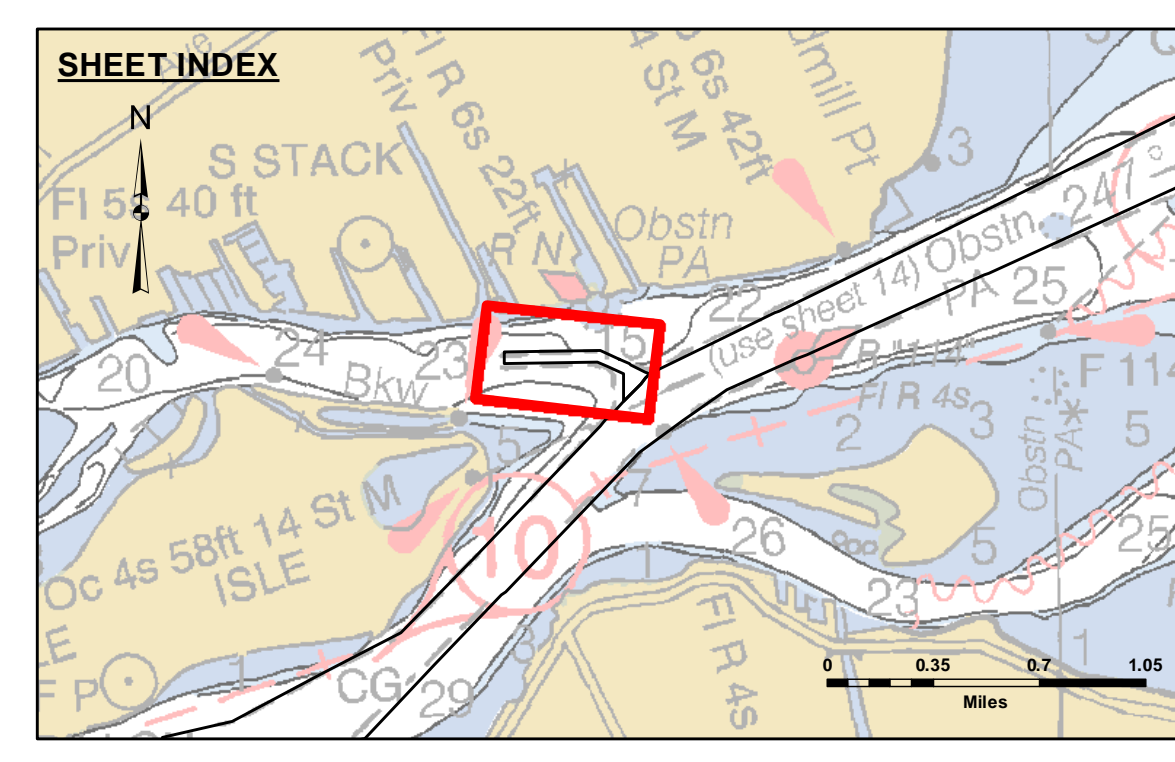


DISCLAIMER: The data represents the results of data collection and processing for a specific US Army Corps of Engineers activity and does not represent the general existing conditions, accuracy, or reliability for any particular purpose of the user. The user is responsible for the accuracy, completeness, and reliability of the data for other than its intended purpose. The United States Government furnishes these data and the recipient accepts and uses them with the express understanding that the Government makes no warranty, either expressed or implied, concerning the accuracy, completeness, or reliability of the data. The recipient may not transfer these data to others without also transferring the Disclaimer.



U.S. ARMY CORPS OF ENGINEERS DETROIT DISTRICT		
Submitted:	Surveyed By:	Checked By:
Recommended:	Chief, Survey Section	
Approved:	Chief, Technical Services	

DR_01_BIN_20211013_CS
13 October 2021

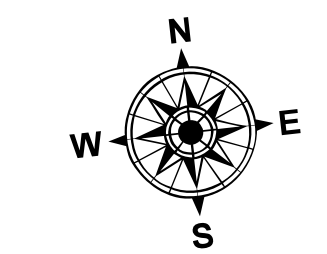


LEGEND

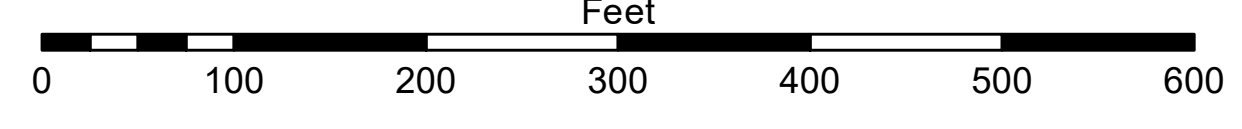
- Cable Submarine
- - - Cable Overhead
- Placement Area
- ⊥ Beacon, General
- Contour Lines
- ▭ Channel Limits

SOUNDING LEGEND

- Red: LESS THAN PROJECT DEPTH
- Light Blue: PROJECT DEPTH
- Light Blue: PROJECT DEPTH +1'
- Medium Blue: PROJECT DEPTH +2'
- Dark Blue: PROJECT DEPTH +3'
- Dark Blue: PROJECT DEPTH +4'
- Dark Blue: PROJECT DEPTH +5'



1 inch = 100 feet



NOTES: THE SOUNDINGS INDICATED HEREIN ARE GENERALIZED DEPTHS AND ARE NOT REPRESENTATIVE OF THE FULL DATASET. THE SOUNDINGS REPRESENT THE MINIMUM DEPTH FOUND WITHIN THE 10X10 FOOT AREA CENTERED ON THE TEXT, DERIVED FROM A 1X1 FOOT AVERAGE DATASET AT CELL CENTER. THIS MAP SHOULD NOT BE USED FOR CHANNEL CLEARANCE OR VOLUME COMPUTATIONS. MINIMUM DEPTH DATA IS PRODUCED FOR STRIKE/SOAL REMOVAL OPERATIONS AND NOTICE TO NAVIGATION INTERESTS.

HORIZONTAL GRID DATUM BASED ON MICHIGAN STATE PLANE COORDINATE SYSTEM, LAMBERT PROJECTION, SOUTH ZONE (2113), NORTH AMERICAN DATUM 1983, U.S. SURVEY FOOT.

ALL SOUNDINGS ARE REFERENCED TO INTERNATIONAL GREAT LAKES DATUM OF 1985 (IGLD85).

PROJECT DEPTHS FOR THE BELLE ISLE NORTH CHANNEL = 21.0'

TIDE VALUES ARE DERIVED FROM THE NATIONAL OCEANIC AND ATMOSPHERIC ADMINISTRATION (NOAA) WATER LEVEL STATIONS.

FORT WAYNE, MI 9044036
WINDMILL POINT, MI 9044049

POSITIONING: APPLANIX POS-MV4 W/ VRS/RTK OR MARINESTAR GNSS.
MOTION COMPENSATION: APPLANIX POS-MV4
SONAR: R2SONIC 2024 (MULTIBEAM TRANSDUCER)
SOFTWARE: HYPACK

2010 AERIAL PHOTOGRAPHY DATA SOURCE: USGS

ALL COORDINATES ARE IN US SURVEY FEET.

Sheet Reference Number
1 of 1