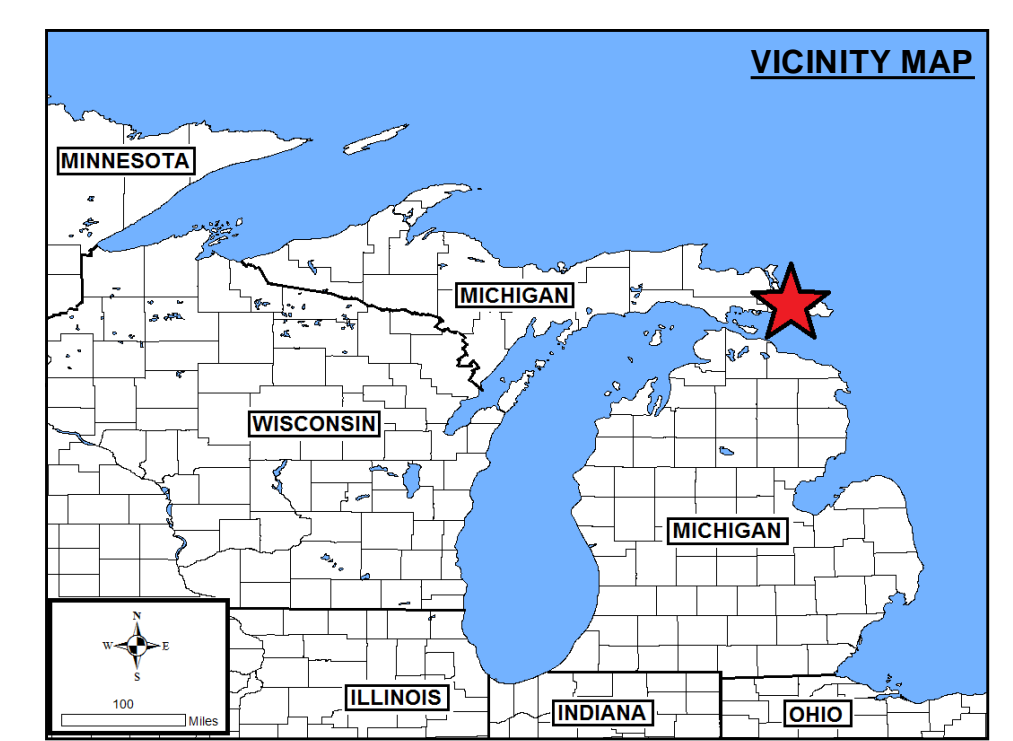
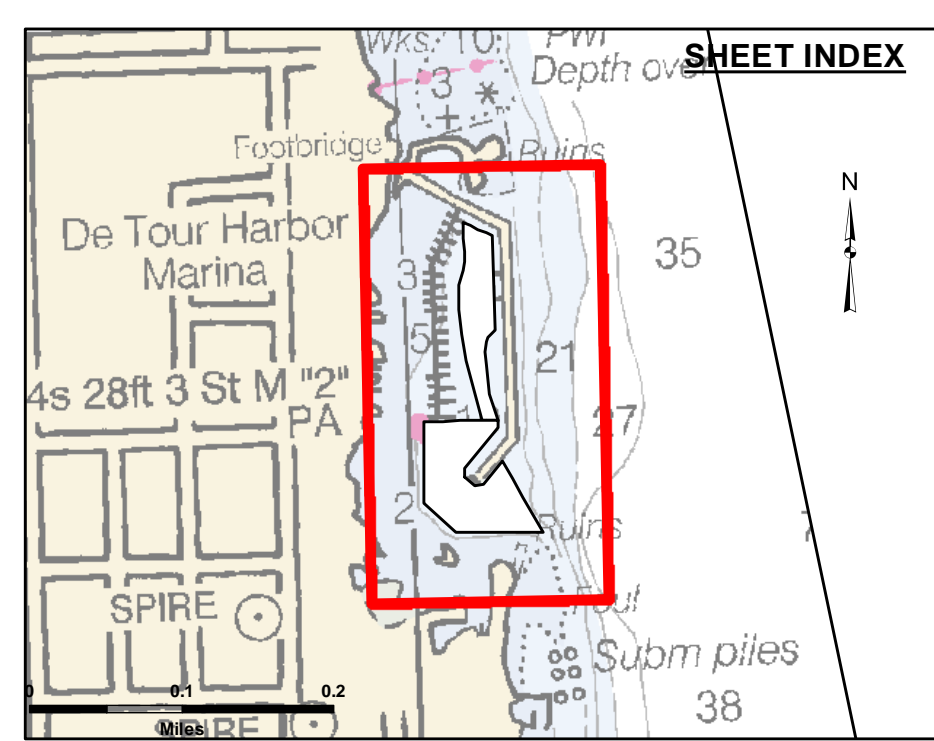


**Disclaimer:** The data represents the results of data collection and processing for a specific US Army Corps of Engineers activity and indicates the general existing conditions. The user is responsible for the accuracy, completeness, and reliability of the data for other than its intended purpose. The user is responsible for the accuracy, completeness, and reliability of the data for other than its intended purpose. The user is responsible for the accuracy, completeness, and reliability of the data for other than its intended purpose.

U.S. ARMY CORPS OF ENGINEERS DETROIT DISTRICT		
Submitted:	Surveyed By:	
Recommended:	Checked By:	
Chief, Survey Section	Chief, Technical Services	

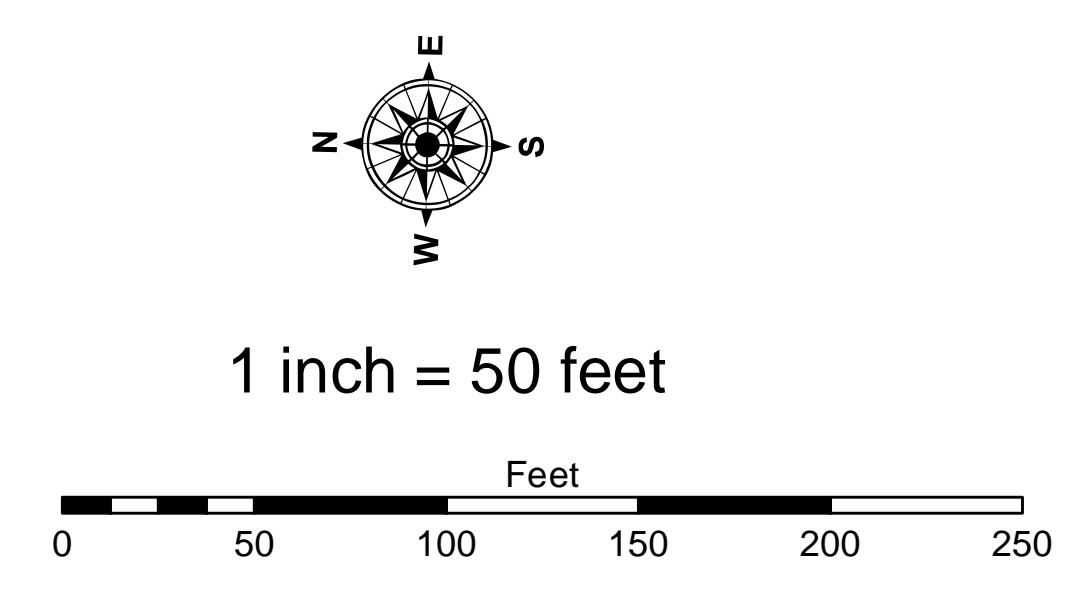


**LEGEND**

- ..... Cable Submarine
- Cable Overhead
- Placement Area
- ⊥ Beacon, General
- Contour Lines
- ▭ Channel\_Limits

**SOUNDING LEGEND**

- LESS THAN PROJECT DEPTH
- PROJECT DEPTH
- PROJECT DEPTH +1'
- PROJECT DEPTH +2'
- PROJECT DEPTH +3'
- PROJECT DEPTH +4'
- PROJECT DEPTH +5'



**NOTES:**

- 1) SURVEY CONTROL AND BENCH MARK DATA IS AVAILABLE FROM THE DETROIT DISTRICT.
- 2) THE COORDINATE GRID SYSTEM SHOWN IS REFERENCED TO THE MICHIGAN STATE PLANE COORDINATE SYSTEM, LAMBERT PROJECTION, NORTH ZONE 2111, NORTH AMERICAN DATUM 1983 (NAD83), US SURVEY FOOT.
- 3) ELEVATIONS AND SOUNDING DEPTHS ARE REFERRED TO INTERNATIONAL GREAT LAKES DATUM 1985 (IGLD 85). LOW WATER DATUM ZERO IS 577.5 FEET ABOVE MEAN WATER LEVEL AT POINT RINGOLSKI QUEBEC. WATER LEVEL READINGS ARE FROM AN AUTOMATED NOAA GAUGE LOCATED AT DETROIT HARBOR (5089). DEPTHS ARE MEASURED USING AN ODOM ECHOTRAC E20 ECHOSOUNDER SINGLEBEAM SOUNDER.
- 4) PROJECT DEPTH FOR THIS AREA IS 8.0' and 10.0'.
- 5) THE INFORMATION DEPICTED ON THIS MAP REPRESENTS THE RESULTS OF SURVEYS MADE ON THE DATES INDICATED AND CAN ONLY BE CONSIDERED AS INDICATING THE GENERAL CONDITIONS AT THAT TIME.
- 6) HORIZONTAL POSITIONING IS DETERMINED BY USING A TRIMBLE MPS865 WITH OMNISTAR CORRECTIONS.

IMAGERY SOURCED : ESRI

Detour Harbor, MI  
 Detour Harbor  
 DE\_01\_TUR\_20230530\_CS  
 30 May 2023

Sheet Reference Number  
 1 of 1