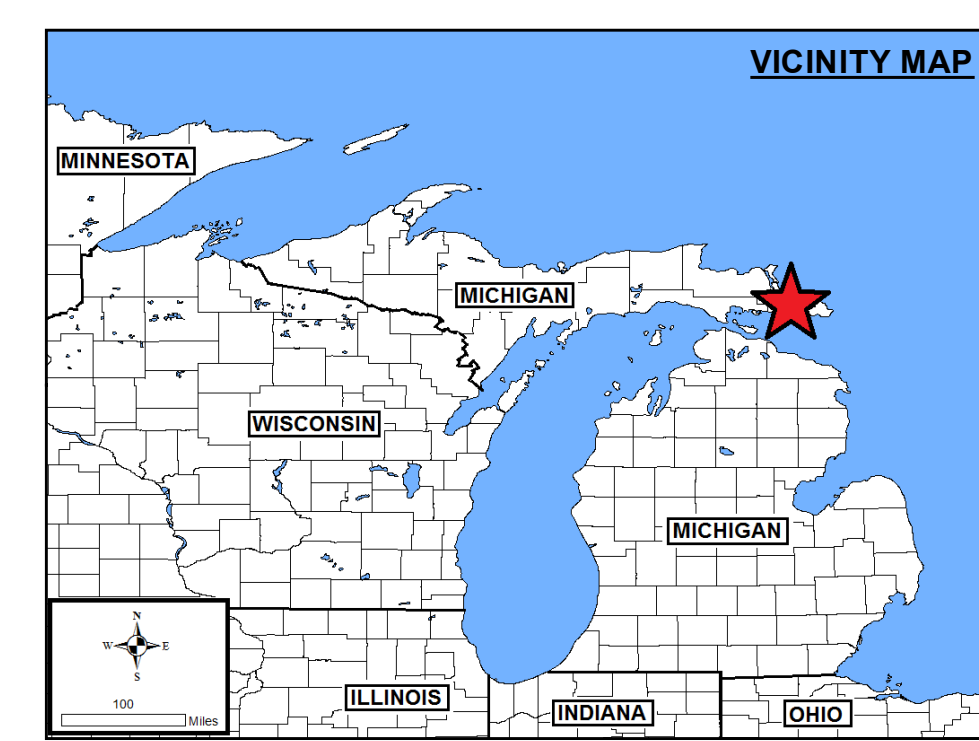
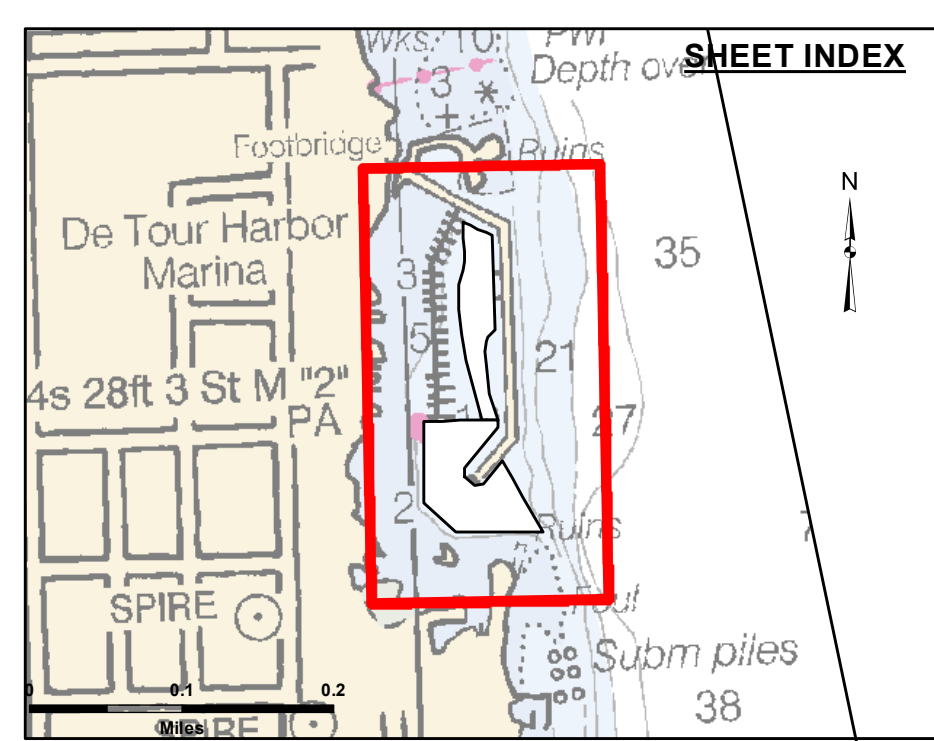


**DISCLAIMER:** The United States Government furnishes these data and the recipient accepts and uses them with the express understanding that the United States Government makes no warranty, expressed or implied, concerning the accuracy, completeness, reliability, usability or suitability for any particular purpose of the data. The United States Government is not responsible for the results of any of the application of the data for other than its intended purpose.

**Access Constraints:** The United States Government furnishes these data and the recipient accepts and uses them with the express understanding that the United States Government makes no warranty, expressed or implied, concerning the accuracy, completeness, reliability, usability or suitability for any particular purpose of the data. The United States Government is not responsible for the results of any of the application of the data for other than its intended purpose.

U.S. ARMY CORPS OF ENGINEERS DETROIT DISTRICT		
Submitted:	Surveyed By:	
Recommended:	Plotted By:	
Approved:	Chief, Survey Section	Chief, Technical Services

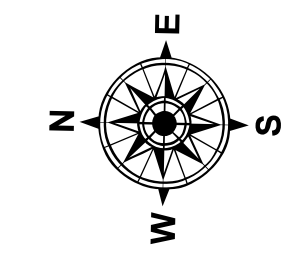


**LEGEND**

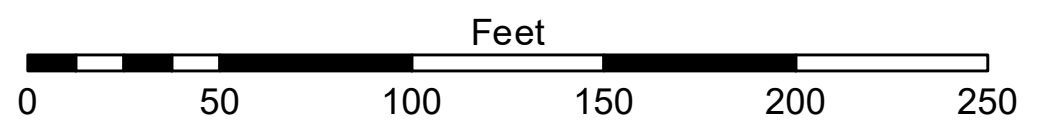
- ..... Cable Submarine
- Cable Overhead
- Placement Area
- ⊥ Beacon, General
- Contour Lines
- ▭ Channel\_Limits

**SOUNDING LEGEND**

- LESS THAN PROJECT DEPTH
- PROJECT DEPTH
- PROJECT DEPTH +1'
- PROJECT DEPTH +2'
- PROJECT DEPTH +3'
- PROJECT DEPTH +4'
- PROJECT DEPTH +5'



1 inch = 50 feet



- NOTES:**
- 1) SURVEY CONTROL AND BENCH MARK DATA IS AVAILABLE FROM THE DETROIT DISTRICT.
  - 2) THE COORDINATE GRID SYSTEM SHOWN IS REFERENCED TO THE MICHIGAN STATE PLANE COORDINATE SYSTEM, LAMBERT PROJECTION, NORTH ZONE 2-11, NORTH AMERICAN DATUM 1983 (NAD83), US SURVEY FOOT.
  - 3) ELEVATIONS AND SOUNDING DEPTHS ARE REFERRED TO INTERNATIONAL GREAT LAKES DATUM 1985 (IGLD 85). LOW WATER DATUM ZERO IS 577.5 FEET ABOVE MEAN WATER LEVEL AT POINT RIMOUSKI QUEBEC. WATER LEVEL READINGS ARE FROM AN AUTOMATED NOAA GAUGE LOCATED AT DETOUR HARBOR (5099). DEPTHS ARE MEASURED USING AN ODOM ECHOTRAC E20 ECHOSOUNDER SINGLEBEAM SOUNDER.
  - 4) PROJECT DEPTH FOR THIS AREA IS 8.0' and 10.0'.
  - 5) THE INFORMATION DEPICTED ON THIS MAP REPRESENTS THE RESULTS OF SURVEYS MADE ON THE DATES INDICATED AND CAN ONLY BE CONSIDERED AS INDICATING THE GENERAL CONDITIONS AT THAT TIME.
  - 6) HORIZONTAL POSITIONING IS DETERMINED BY USING A TRIMBLE MPS865 WITH OMNISTAR CORRECTIONS.
- IMAGERY SOURCED : ESRI

**Detour Harbor, MI**  
**Detour Harbor**  
**DE\_01\_TUR\_20220614\_CS**  
**14 June 2022**

**Sheet Reference Number**  
**1 of 1**