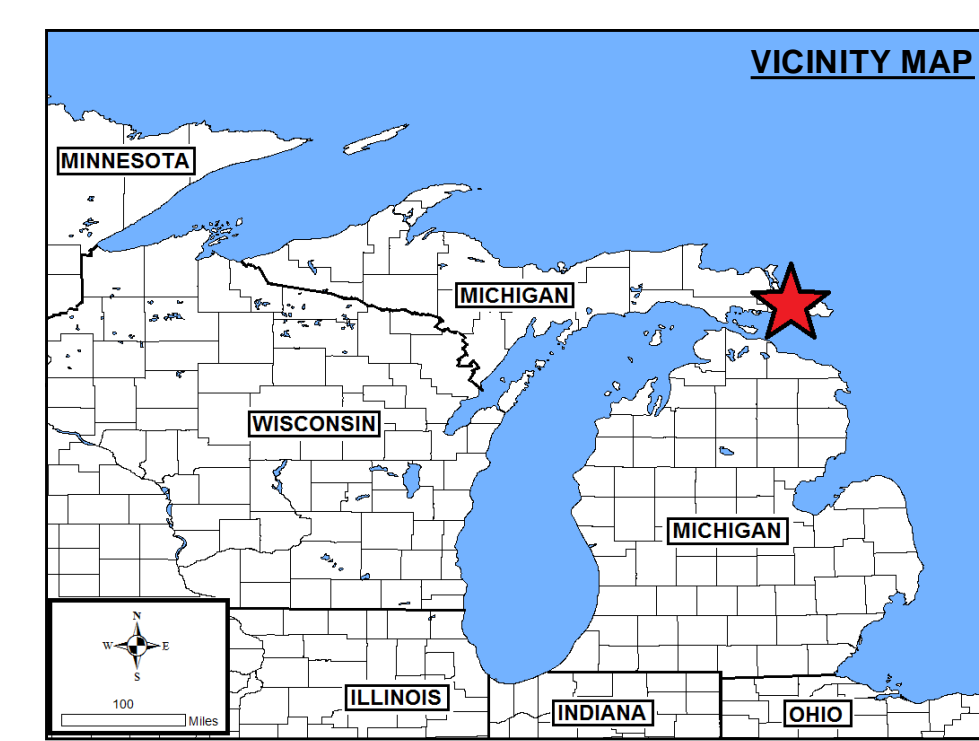
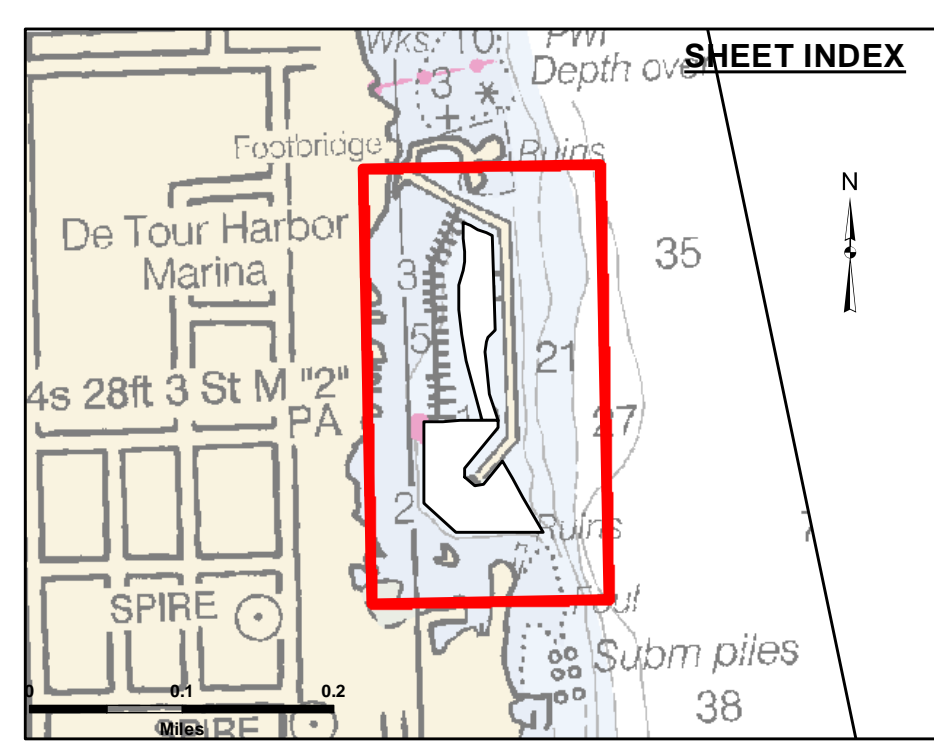


Disclaimer: The data represents the results of data collection and processing for a specific US Army Corps of Engineers activity and indicates the general existing conditions. The user is responsible for the accuracy, completeness, and reliability of the data for other than its intended purpose. The United States Government assumes no liability for any use of this data other than that for which it was prepared, or implied concerning the accuracy, completeness, or reliability of the data for any particular purpose of the user. These data belong to the Government. Therefore, the recipient may not transfer, disseminate, or use these data to others without also transferring this Disclaimer.

U.S. ARMY CORPS OF ENGINEERS DETROIT DISTRICT		
Submitted:	Surveyed By:	
Recommended:	Chief, Survey Section	Printed By:
Approved:	Chief, Technical Services	Checked By:

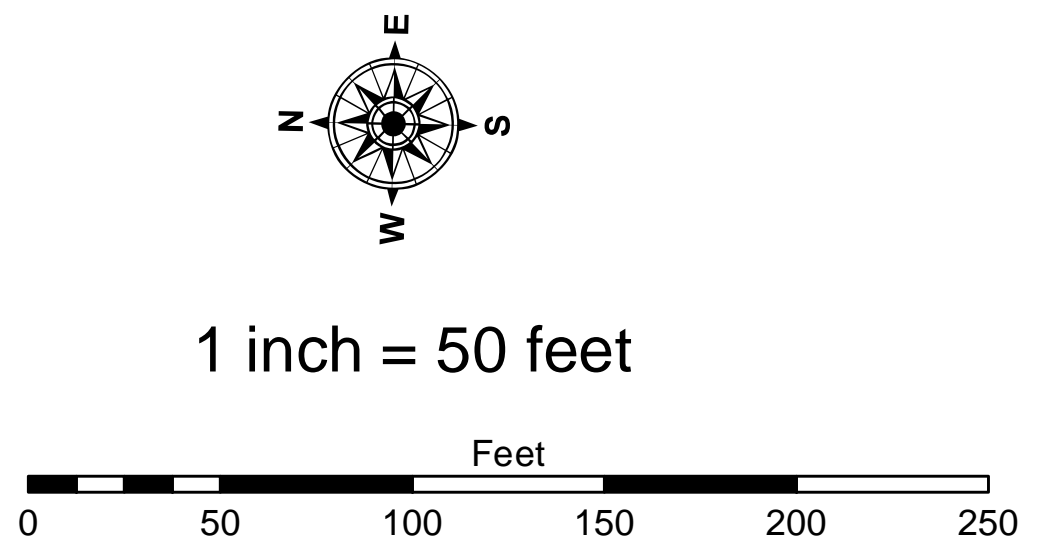


LEGEND

- Cable Submarine
- Cable Overhead
- Placement Area
- ⊥ Beacon, General
- Contour Lines
- ▭ Channel_Limits

SOUNDING LEGEND

- LESS THAN PROJECT DEPTH
- PROJECT DEPTH
- PROJECT DEPTH +1'
- PROJECT DEPTH +2'
- PROJECT DEPTH +3'
- PROJECT DEPTH +4'
- PROJECT DEPTH +5'



- NOTES:**
- 1) SURVEY CONTROL AND BENCH MARK DATA IS AVAILABLE FROM THE DETROIT DISTRICT.
 - 2) THE COORDINATE GRID SYSTEM SHOWN IS REFERENCED TO THE MICHIGAN STATE PLANE COORDINATE SYSTEM, LAMBERT PROJECTION, NORTH ZONE 2111, NORTH AMERICAN DATUM 1983 (NAD83), US SURVEY FOOT.
 - 3) ELEVATIONS AND SOUNDING DEPTHS ARE REFERRED TO INTERNATIONAL GREAT LAKES DATUM 1985 (IGLD 85). LOW WATER DATUM ZERO IS 577.5 FEET ABOVE MEAN WATER LEVEL AT POINT RIMOUSKI QUEBEC. WATER LEVEL READINGS ARE FROM AN AUTOMATED NOAA GAUGE LOCATED AT DETOUR HARBOR (5089). DEPTHS ARE MEASURED USING AN ODOM ECHOTRAC E20 ECHOSOUNDER SINGLEBEAM SOUNDER.
 - 4) PROJECT DEPTH FOR THIS AREA IS 8.0' and 10.0'.
 - 5) THE INFORMATION DEPICTED ON THIS MAP REPRESENTS THE RESULTS OF SURVEYS MADE ON THE DATES INDICATED AND CAN ONLY BE CONSIDERED AS INDICATING THE GENERAL CONDITIONS AT THAT TIME.
 - 6) HORIZONTAL POSITIONING IS DETERMINED USING A TRIMBLE SPS481 SUB-METER DGPS RECEIVER. IMAGERY SOURCED - ESRI

Detour Harbor, MI
 Detour Harbor
 DE_01_TUR_20210602_CS
 02 June 2021

Sheet Reference Number
 1 of 1