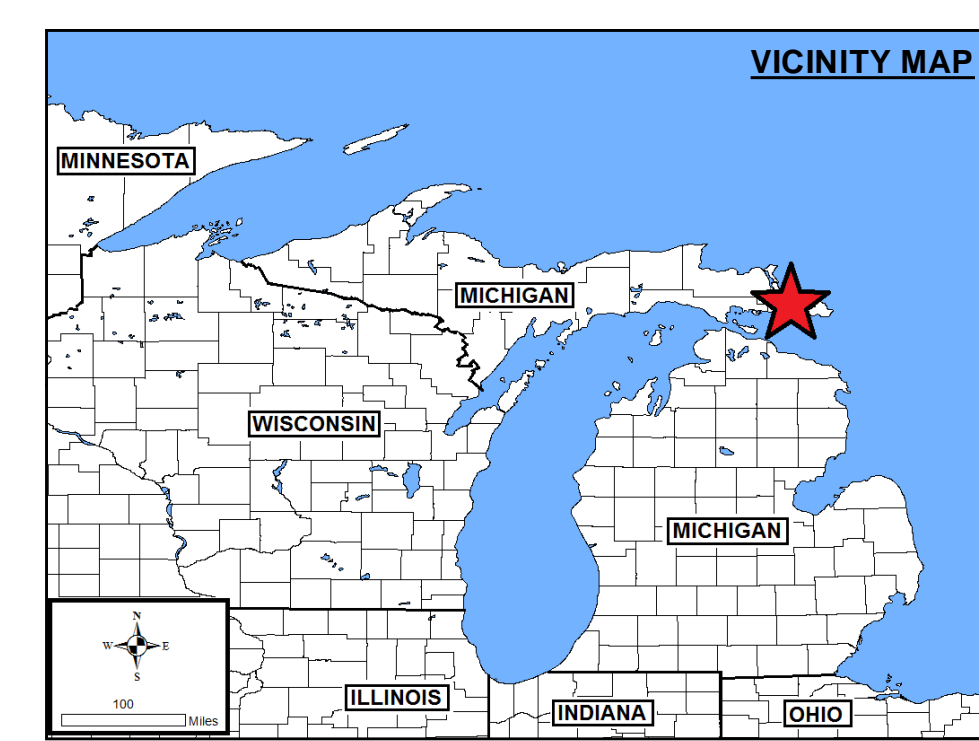
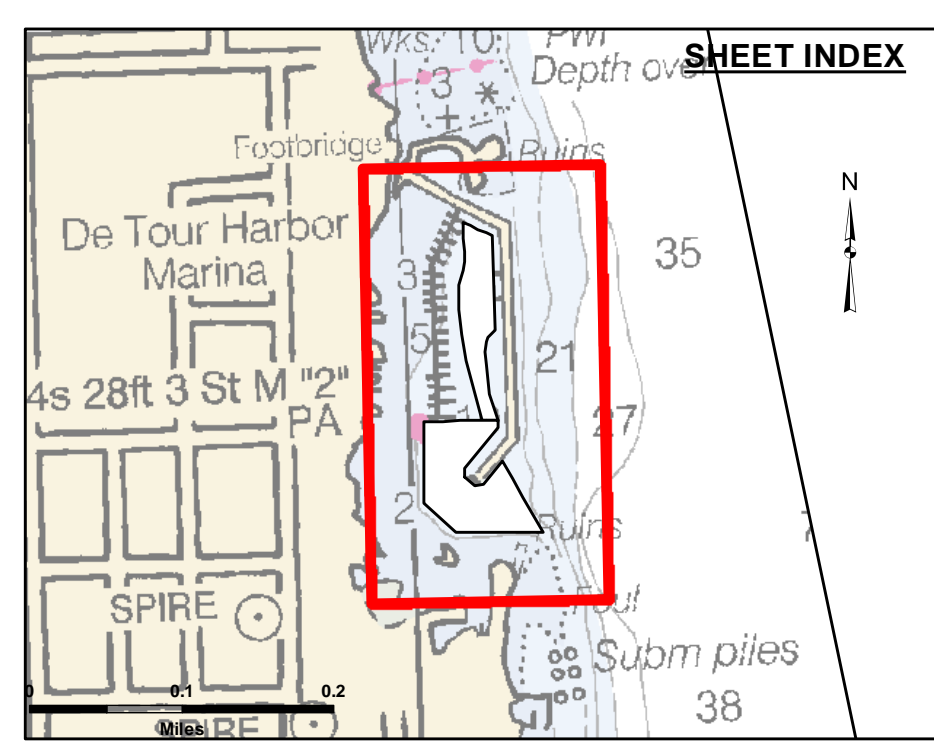


Disclaimer: The data represents the results of data collection and processing for a specific US Army Corps of Engineers activity and indicates the general existing conditions. The user is responsible for the accuracy, completeness, and reliability of the data for other than its intended purpose. The user is responsible for the accuracy, completeness, and reliability of the data for other than its intended purpose. These data are provided to the recipient for their use and are not to be used for any other purpose. The user is responsible for the accuracy, completeness, and reliability of the data for other than its intended purpose. These data are provided to the recipient for their use and are not to be used for any other purpose.

U.S. ARMY CORPS OF ENGINEERS DETROIT DISTRICT		
Submitted:	Surveyed By:	
Recommended:	Plotted By:	
Chief, Survey Section	Chief, Technical Services	
Approved:	Checked By:	

Detour Harbor, MI
Detour Harbor
DE_01_TUR_20200624_CS
24 June 2020

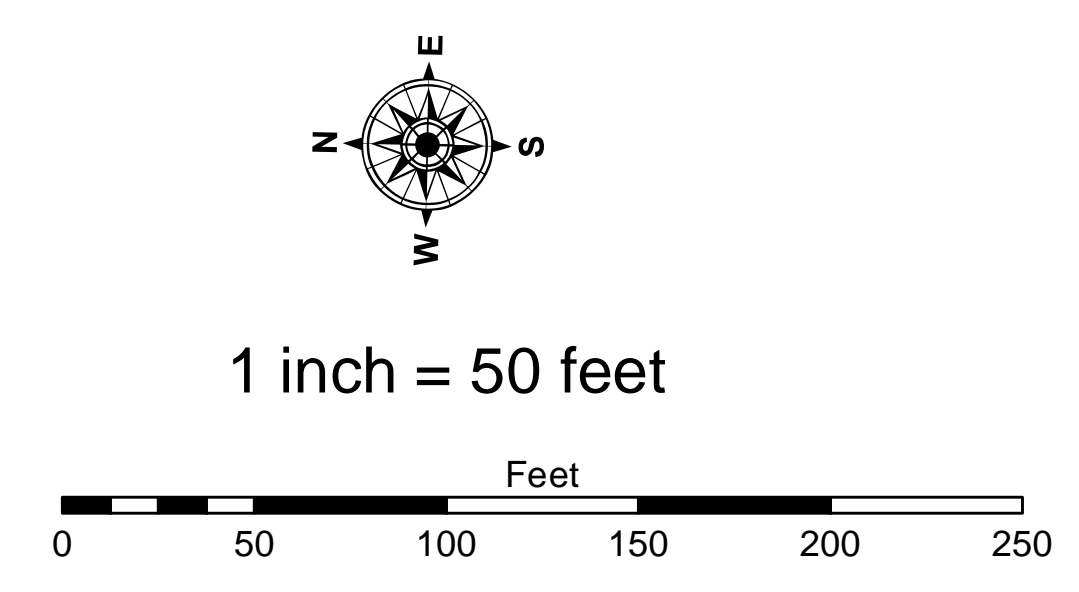


LEGEND

- Cable Submarine
- - - Cable Overhead
- Placement Area
- ⊥ Beacon, General
- Contour Lines
- ▭ Channel Limits

SOUNDING LEGEND

- LESS THAN PROJECT DEPTH
- PROJECT DEPTH
- PROJECT DEPTH +1'
- PROJECT DEPTH +2'
- PROJECT DEPTH +3'
- PROJECT DEPTH +4'
- PROJECT DEPTH +5'



NOTES:

- 1) SURVEY CONTROL AND BENCH MARK DATA IS AVAILABLE FROM THE DETROIT DISTRICT, ENGINEERING & TECHNICAL SERVICES, OPERATIONS TECHNICAL SUPPORT BRANCH, LAKE MICHIGAN AREA OFFICE, KEWAUNEE SUB-OFFICE.
- 2) THE COORDINATE GRID SYSTEM SHOWN IS REFERENCED TO THE MICHIGAN STATE PLANE COORDINATE SYSTEM, LAMBERT PROJECTION, NORTH ZONE 2 111, NORTH AMERICAN DATUM 1983 (NAD83), US SURVEY FOOT.
- 3) ELEVATIONS AND SOUNDING DEPTHS ARE REFERRED TO INTERNATIONAL GREAT LAKES DATUM 1985 (IGLD 85). LOW WATER DATUM ZERO IS 577.5 FEET ABOVE MEAN WATER LEVEL AT POINT RIMOUSKI QUEBEC. WATER LEVEL READINGS ARE FROM AN AUTOMATED NOAA GAUGE LOCATED AT DETOUR HARBOR (5099). DEPTHS ARE MEASURED USING AN ODOM ECHOTRAC E20 ECHOSOUNDER SINGLEBEAM SOUNDER.
- 4) PROJECT DEPTH FOR THIS AREA IS 8.0' and 10.0'.
- 5) THE INFORMATION DEPICTED ON THIS MAP REPRESENTS THE RESULTS OF SURVEYS MADE ON THE DATES INDICATED AND CAN ONLY BE CONSIDERED AS INDICATING THE GENERAL CONDITIONS AT THAT TIME.
- 6) HORIZONTAL POSITIONING IS DETERMINED USING A TRIMBLE SPS461 SUB-METER DGPS RECEIVER. IMAGERY SOURCED : ESRI.

Sheet Reference Number
1 of 1