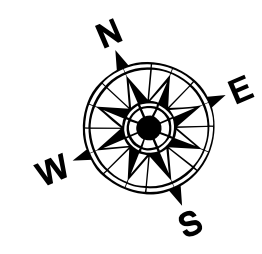


- LEGEND**
- Cable Submarine
 - - - Cable Overhead
 - Placement Area
 - ⊥ Beacon, General
 - Contour Lines
 - ▭ Channel Limits

- SOUNDING LEGEND**
- LESS THAN PROJECT DEPTH
 - PROJECT DEPTH
 - PROJECT DEPTH +1'
 - PROJECT DEPTH +2'
 - PROJECT DEPTH +3'
 - PROJECT DEPTH +4'
 - PROJECT DEPTH +5'



1 inch = 100 feet



NOTES: THE SOUNDINGS AND ASSOCIATED INFORMATION REPRESENTED HEREIN ARE THE RESULT OF SURVEYS MADE ON THE DATE AS INDICATED AND CAN ONLY BE CONSIDERED REPRESENTATIVE OF THE GENERAL CONDITIONS EXISTING AT THE TIME OF SURVEY.

THE SOUNDINGS DEPICTED HEREIN ARE EXPRESSED IN U.S. SURVEY FEET AND TENTHS THEREOF AND ARE REFERENCED TO THE FOLLOWING DATUMS:
 HORIZONTAL: MICHIGAN STATE PLANE COORDINATE SYSTEM, MICHIGAN SOUTH ZONE #2113, NORTH AMERICAN DATUM (NAD) OF 1983
 VERTICAL: INTERNATIONAL GREAT LAKES DATUM (IGLD) OF 1985.

THE ABOVE SURVEY WAS CONDUCTED USING THE U.S.A.C.E. SURVEY VESSEL LAUNCH 3053 EMPLOYING THE FOLLOWING COMPONENTS:
 POSITIONING: APPLANIX POS-MV 4 MARINESTAR G2+ GNSS
 MOTION COMPENSATION: APPLANIX POS-MV 4
 SONAR: ODOM CV-300
 SOFTWARE: HYPACK 2018

TIDE VALUES ARE DERIVED FROM THE NATIONAL OCEANIC AND ATMOSPHERIC ADMINISTRATION (NOAA) WATER LEVEL STATION: ESSEXVILLE, MI 1 (#9075035)

IMAGERY SOURCED FROM: 2014 MICHIGAN NAIP IMAGERY



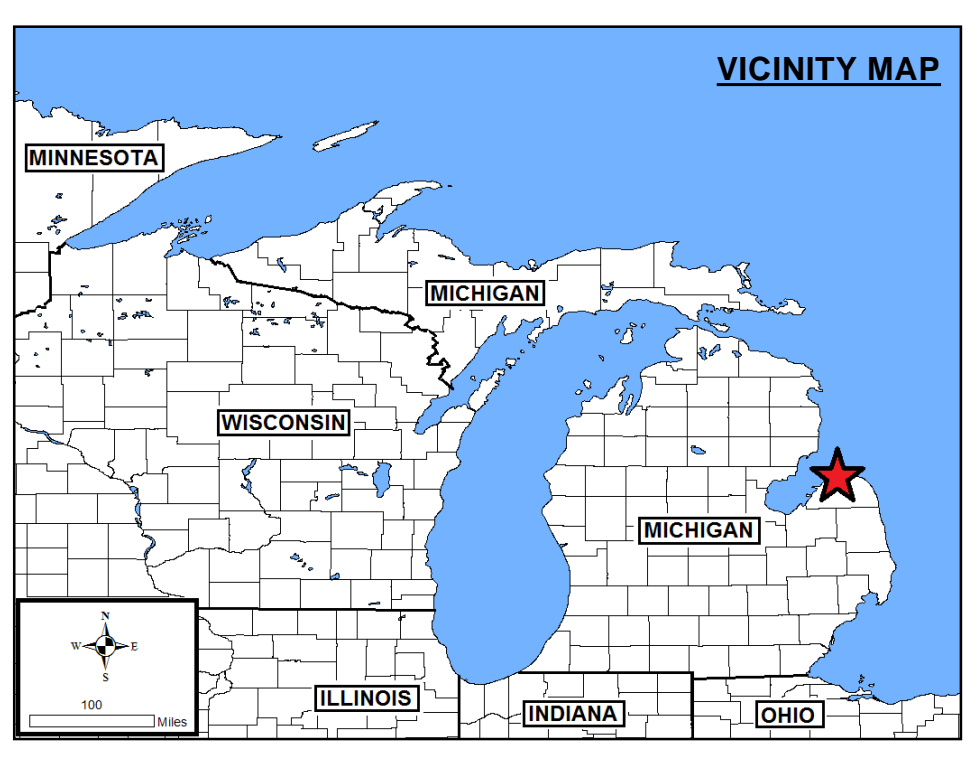
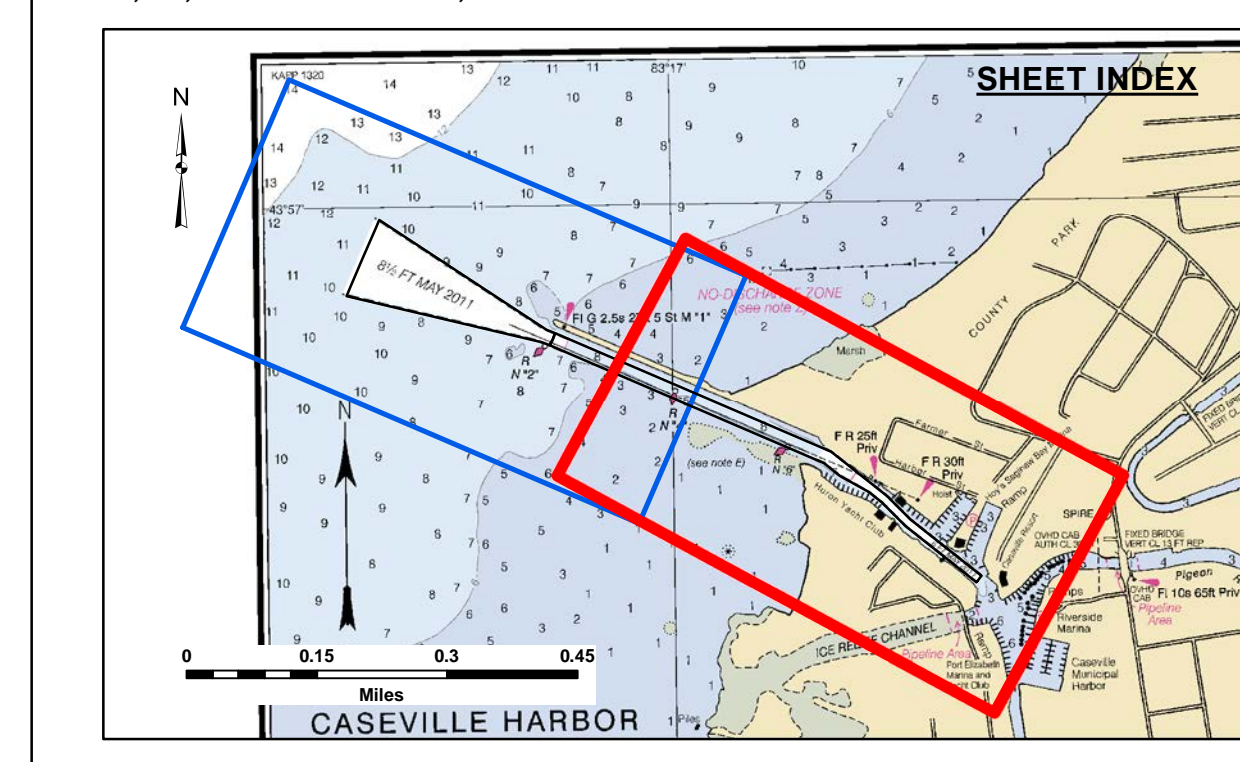
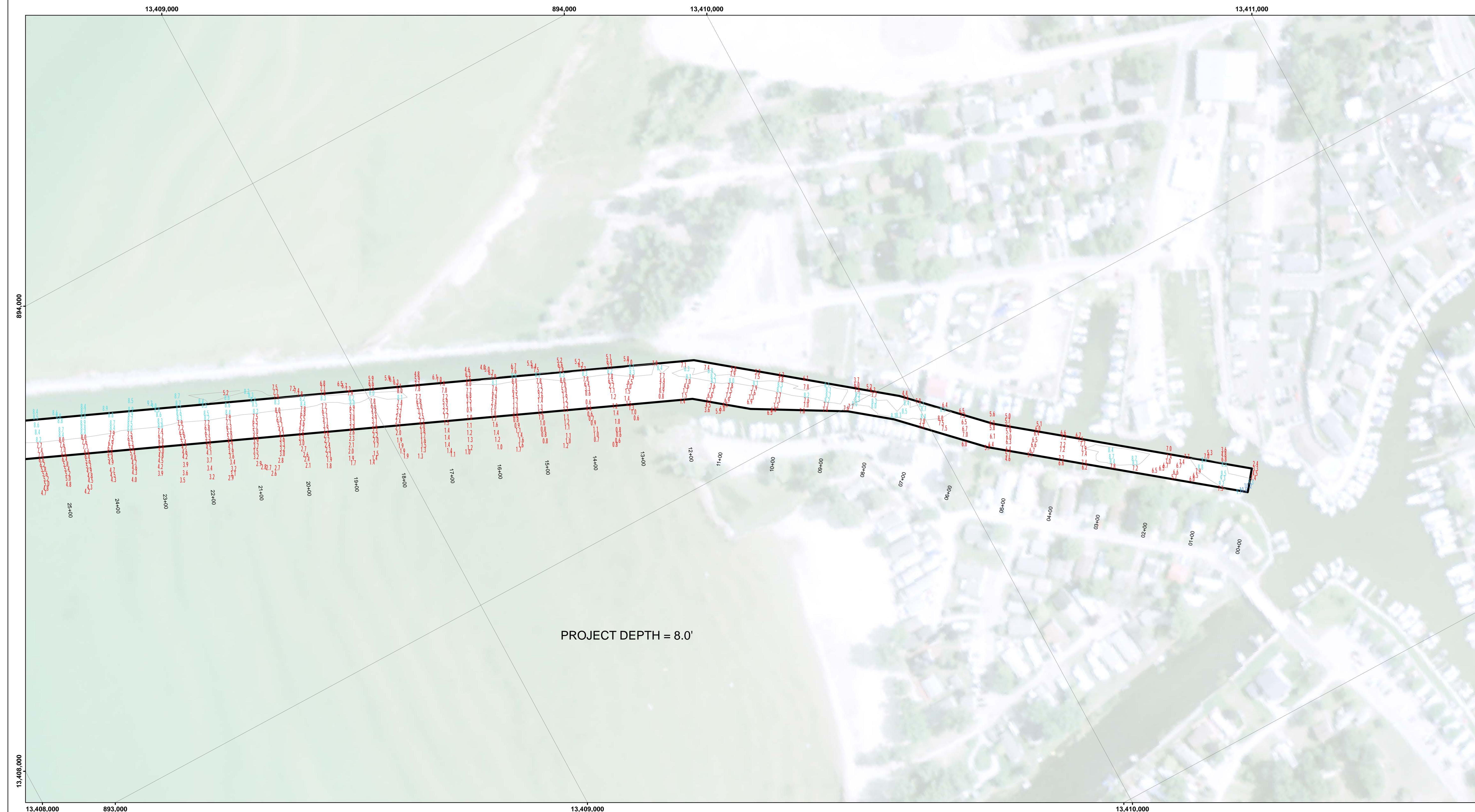
DISCLAIMER: The United States Government furnishes these data and the recipient accepts and uses them with the express understanding that the United States Government makes no warranty, expressed or implied concerning the accuracy, completeness, reliability, usability or suitability for any particular purpose of the data. The recipient shall be responsible for the accuracy of any of the application of the data for other than its intended purpose.

ACCESS RESTRICTIONS: The United States Government furnishes these data and the recipient accepts and uses them with the express understanding that the United States Government makes no warranty, expressed or implied concerning the accuracy, completeness, reliability, usability or suitability for any particular purpose of the data. The recipient shall be responsible for the accuracy of any of the application of the data for other than its intended purpose.

U.S. ARMY CORPS OF ENGINEERS DETROIT DISTRICT		
Submitted:	Surveyed By:	
Recommended:	Plotted By:	
Approved:	Chief, Survey Section	
	Chief, Technical Services	

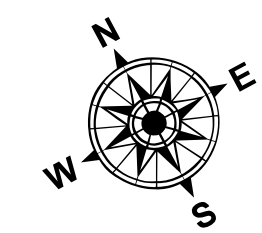
Caseville Harbor, MI
 Caseville Harbor
 CS_01_EVL_20230613_CS
 13 June 2023

Sheet Reference Number
 1 of 2



- LEGEND**
- Cable Submarine
 - - - Cable Overhead
 - Placement Area
 - ⊥ Beacon, General
 - Contour Lines
 - ▭ Channel Limits

- SOUNDING LEGEND**
- Red: LESS THAN PROJECT DEPTH
 - Cyan: PROJECT DEPTH +1'
 - Blue: PROJECT DEPTH +2'
 - Dark Blue: PROJECT DEPTH +3'
 - Purple: PROJECT DEPTH +4'
 - Dark Purple: PROJECT DEPTH +5'



1 inch = 100 feet



NOTES: THE SOUNDINGS AND ASSOCIATED INFORMATION REPRESENTED HEREIN ARE THE RESULT OF SURVEYS MADE ON THE DATE AS INDICATED AND CAN ONLY BE CONSIDERED REPRESENTATIVE OF THE GENERAL CONDITIONS EXISTING AT THE TIME OF SURVEY.

THE SOUNDINGS DEPICTED HEREIN ARE EXPRESSED IN U.S. SURVEY FEET AND TENTHS THEREOF AND ARE REFERENCED TO THE FOLLOWING DATUMS:
 HORIZONTAL: MICHIGAN STATE PLANE COORDINATE SYSTEM, MICHIGAN SOUTH ZONE #2113, NORTH AMERICAN DATUM (NAD) OF 1983
 VERTICAL: INTERNATIONAL GREAT LAKES DATUM (IGLD) OF 1985.

THE ABOVE SURVEY WAS CONDUCTED USING THE U.S.A.C.E. SURVEY VESSEL LAUNCH 3053 EMPLOYING THE FOLLOWING COMPONENTS:
 POSITIONING: APPLANIX POS-MV 4 MARINESTAR G2+ GNSS
 MOTION COMPENSATION: APPLANIX POS-MV 4
 SONAR: ODOM CV-300
 SOFTWARE: HYPACK 2018

TIDE VALUES ARE DERIVED FROM THE NATIONAL OCEANIC AND ATMOSPHERIC ADMINISTRATION (NOAA) WATER LEVEL STATION: ESSEXVILLE, MI 1 (#9075035)

IMAGERY SOURCED FROM: 2014 MICHIGAN NAIP IMAGERY



DISCLAIMER: The data represented by the results of data collection/processing for a specific US Army Corps of Engineers activity and indicates the general existing conditions, expressed, or implied concerning the accuracy, completeness, reliability, usability or suitability for any particular purpose of the user. The user is responsible for the results of any of the application of the data for other than its intended purpose.

Access Constraints: The United States Government furnishes these data and the recipient accepts and uses them with the express understanding that the data are not to be used for any purpose other than that for which they were provided. The recipient may not transfer these data to others without also transferring this Disclaimer.

Submitted:	Surveyed By:
Recommended:	Plotted By:
Approved:	Checked By:

U.S. ARMY CORPS OF ENGINEERS
DETROIT DISTRICT

Chief, Survey Section
Chief, Technical Services

Caseville Harbor, MI
Caseville Harbor
CS_01_EVL_20230613_CS
13 June 2023

Sheet Reference Number
2 of 2