

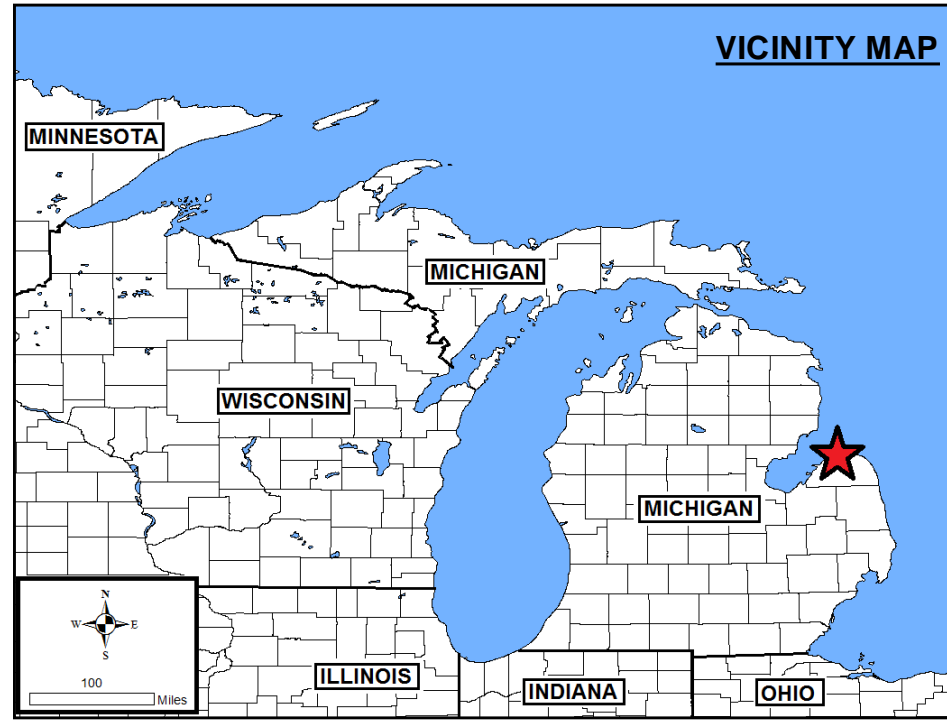
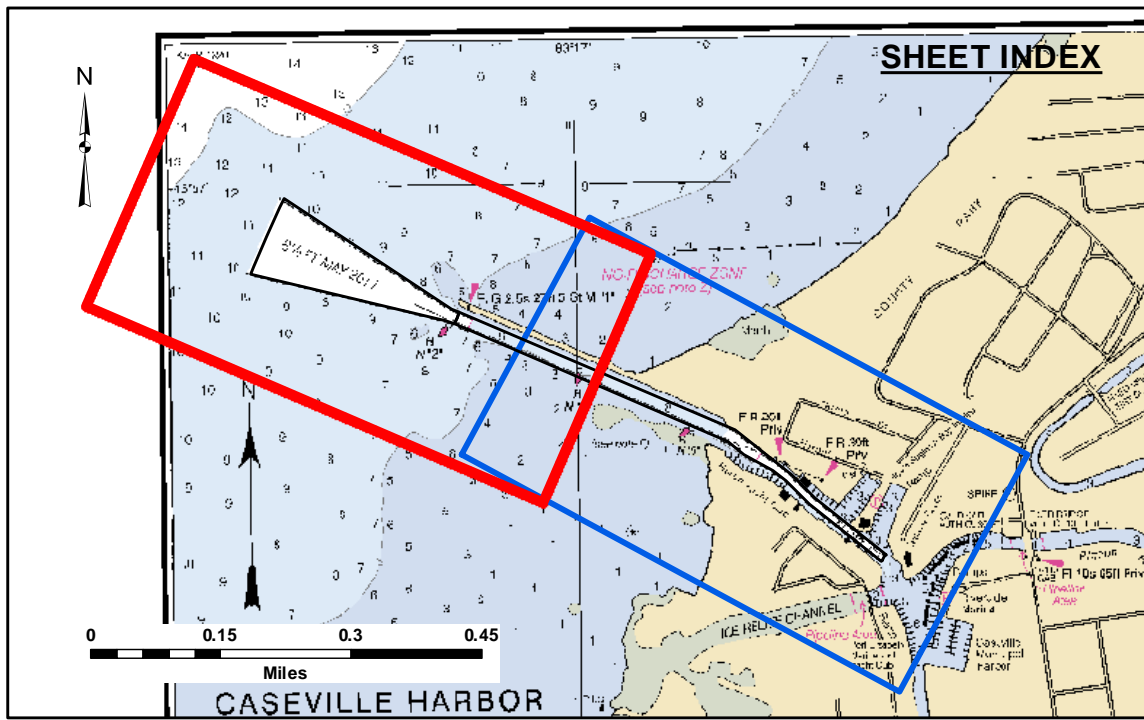
DISCLAIMER: The data represents the results of data collection/processing for a specific US Army Corps of Engineers activity and indicates the general existing conditions. The data is not intended to be used for any other purpose, accuracy, or implied concerning the accuracy, completeness, readability, usability, or suitability for any particular purpose of the user. The user is responsible for the results of any of the application of the data for other than its intended purpose.

ACCESS CONSTRAINTS: The United States Government furnishes these data and the recipient accepts and uses them with the express understanding that the data are not to be used for any purpose other than that for which they were provided. The recipient may not transfer these data to others without also transferring this disclaimer.

U.S. ARMY CORPS OF ENGINEERS DETROIT DISTRICT		
Submitted:	Surveyed By:	
Recommended:	Plotted By:	
Approved:	Chief, Technical Services	

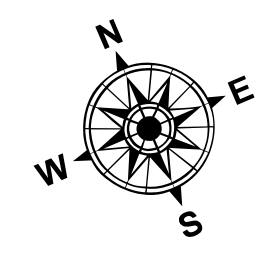
Caseville Harbor, MI
Caseville Harbor
CS_01_EVL_20210713_CS
13 July 2021

Sheet Reference Number
1 of 2



- LEGEND**
- Cable Submarine
 - - - Cable Overhead
 - Placement Area
 - ⊥ Beacon, General
 - Contour Lines
 - ▭ Channel Limits

- SOUNDING LEGEND**
- LESS THAN PROJECT DEPTH
 - PROJECT DEPTH
 - PROJECT DEPTH +1'
 - PROJECT DEPTH +2'
 - PROJECT DEPTH +3'
 - PROJECT DEPTH +4'
 - PROJECT DEPTH +5'



1 inch = 100 feet



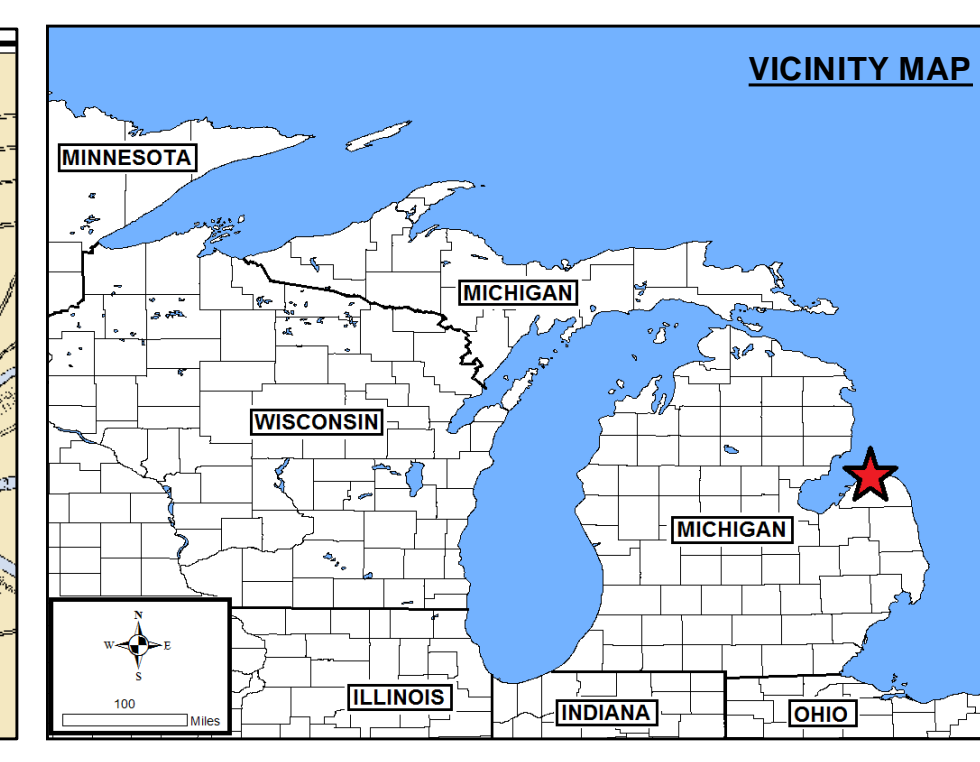
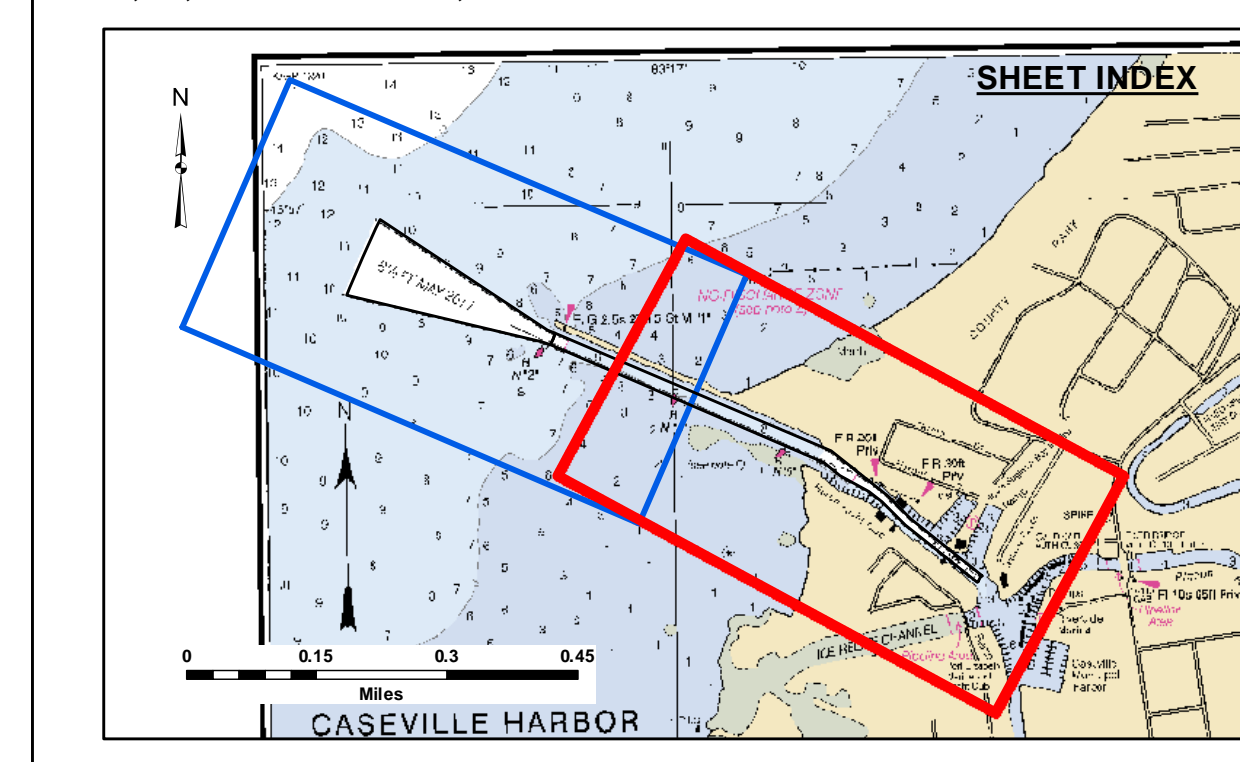
NOTES: THE SOUNDINGS AND ASSOCIATED INFORMATION REPRESENTED HEREIN ARE THE RESULT OF SURVEYS MADE ON THE DATE AS INDICATED AND CAN ONLY BE CONSIDERED REPRESENTATIVE OF THE GENERAL CONDITIONS EXISTING AT THE TIME OF SURVEY.

THE SOUNDINGS DEPICTED HEREIN ARE EXPRESSED IN U.S. SURVEY FEET AND TENTHS THEREOF AND ARE REFERENCED TO THE FOLLOWING DATUMS:
 HORIZONTAL: MICHIGAN STATE PLANE COORDINATE SYSTEM, MICHIGAN SOUTH ZONE #2113, NORTH AMERICAN DATUM (NAD) OF 1983.
 VERTICAL: INTERNATIONAL GREAT LAKES DATUM (IGLD) OF 1985.

THE ABOVE SURVEY WAS CONDUCTED USING THE U.S.A.C.E. SURVEY VESSEL SKIFF EMPLOYING THE FOLLOWING COMPONENTS:
 POSITIONING: TRIMBLE BLUE W/DGPS
 SONAR: ODOM CV-300
 SOFTWARE: HYPACK 2013

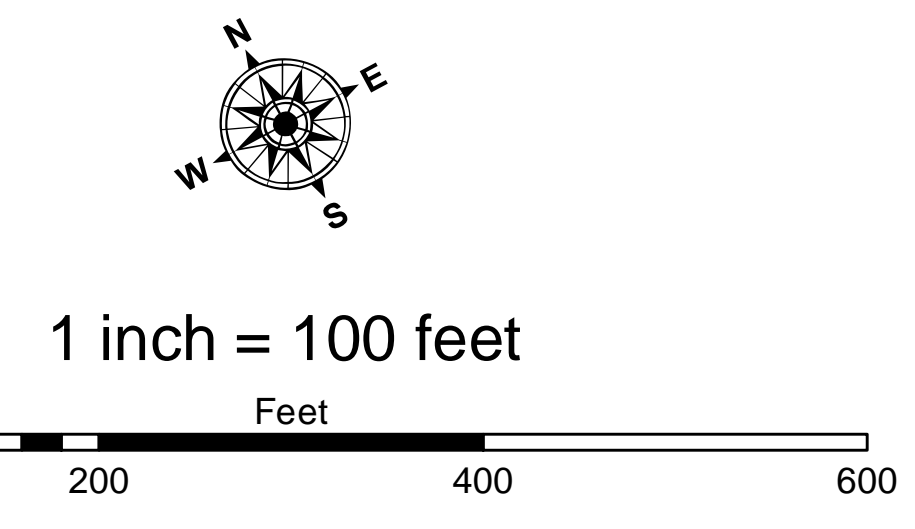
GAGES USED WERE REFERENCED FROM THE TOP OF A STEEL WALL CORNER AT THE CASEVILLE HARBOR BOAT RAMP WITH AN IGLD85 ELEVATION OF 583.591 FT.

IMAGERY SOURCED FROM: 2014 MICHIGAN NAIP IMAGERY



- LEGEND**
- Cable Submarine
 - - - Cable Overhead
 - Placement Area
 - ⊥ Beacon, General
 - Contour Lines
 - ▭ Channel Limits

- SOUNDING LEGEND**
- Red: LESS THAN PROJECT DEPTH
 - Light Blue: PROJECT DEPTH
 - Medium Blue: PROJECT DEPTH +1'
 - Dark Blue: PROJECT DEPTH +2'
 - Very Dark Blue: PROJECT DEPTH +3'
 - Black: PROJECT DEPTH +4'
 - Dark Purple: PROJECT DEPTH +5'



NOTES: THE SOUNDINGS AND ASSOCIATED INFORMATION REPRESENTED HEREIN ARE THE RESULT OF SURVEYS MADE ON THE DATE AS INDICATED AND CAN ONLY BE CONSIDERED REPRESENTATIVE OF THE GENERAL CONDITIONS EXISTING AT THE TIME OF SURVEY.

THE SOUNDINGS DEPICTED HEREIN ARE EXPRESSED IN U.S. SURVEY FEET AND TENTHS THEREOF AND ARE REFERENCED TO THE FOLLOWING DATUMS:
 HORIZONTAL: MICHIGAN STATE PLANE COORDINATE SYSTEM, MICHIGAN SOUTH ZONE #2113, NORTH AMERICAN DATUM (NAD) OF 1983.
 VERTICAL: INTERNATIONAL GREAT LAKES DATUM (IGLD) OF 1985.

THE ABOVE SURVEY WAS CONDUCTED USING THE U.S.A.C.E. SURVEY VESSEL SKIFF EMPLOYING THE FOLLOWING COMPONENTS:
 POSITIONING: TRIMBLE BLUE WDGPS
 SONAR: ODOM CV-300
 SOFTWARE: HYPACK 2013

GAGES USED WERE REFERENCED FROM THE TOP OF A STEEL WALL CORNER AT THE CASEVILLE HARBOR BOAT RAMP WITH AN IGLD85 ELEVATION OF 583.591 FT.

IMAGERY SOURCED FROM: 2014 MICHIGAN NAIP IMAGERY



DISCLAIMER: The data represents the results of data collection and processing for a specific US Army Corps of Engineers activity and indicates the general existing conditions, expressed, or implied concerning the accuracy, completeness, reliability, usability, or suitability for any particular purpose of the data. The user is responsible for the accuracy, completeness, reliability, usability, or suitability of the data for other than its intended purpose. These data are provided to the recipient for their use and are not to be used for any other purpose without the express written consent of the US Army Corps of Engineers. The recipient may not transfer these data to others without also transferring this Disclaimer.

U.S. ARMY CORPS OF ENGINEERS DETROIT DISTRICT		
Submitted By: _____	Surveyed By: _____	
Recommended By: Chief, Survey Section	Plotted By: _____	
Approved: _____	Checked By: _____	

Caseville Harbor, MI
Caseville Harbor
CS_01_EVL_20210713_CS
13 July 2021

Sheet Reference Number
2 of 2