



Distribution Liability. The data represents the results of data collection/processing for a specific US Army Corps of Engineers project and is intended for use under the same conditions. As such, it is only valid for its intended use, content, time and accuracy specifications. The user is responsible for the results of any of the application of the data for other than its intended purpose.

DISCLAIMER

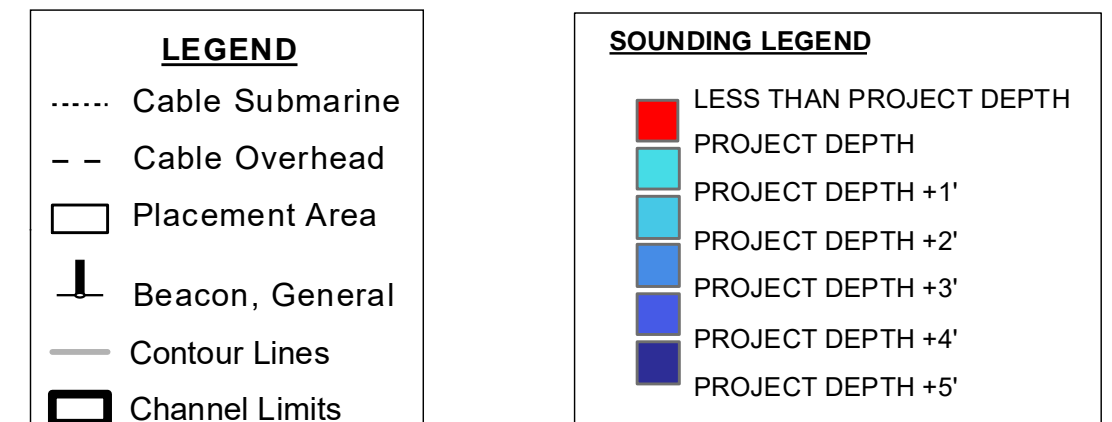
Access Constraints: The United States Government furnishes this information as is without making any warranties, expressed or implied concerning the accuracy, completeness, readability, usability or suitability for any particular purpose of the information and the data furnished. The United States shall be under no liability whatsoever to any person by reason of any use made thereof. These data belong to the Government, therefore they are not to be distributed outside the Government, nor are they to be transferred from Government provided data. The recipient may not transfer these data to others without also transferring this Disclaimer.

U.S. ARMY CORPS OF ENGINEERS DETROIT DISTRICT	
Submitted:	_____
Recommended:	_____
	Chief, Survey Section
Approved:	_____
	Chief, Technical Services

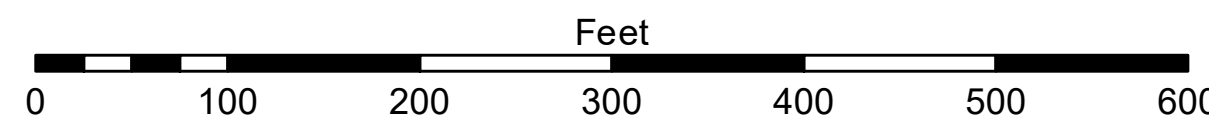
St. Clair River, MI
St Clair River
CR_01_SCR_20231018_CS_TS
18 October 2023

Sheet
Reference
Number
4 of 69

Revision Number:
4.2-20200420



1 inch = 100 feet



NOTES: THE INFORMATION DEPICTED ON THIS MAP REPRESENTS THE RESULTS OF SURVEYS MADE ON THE DATES INDICATED AND CAN ONLY BE CONSIDERED AS INDICATING THE GENERAL CONDITIONS AT THE TIME.

FOR MULTIBEAM SURVEYS: THE SOUNDINGS INDICATED HEREIN ARE GENERALIZED DEPTHS AND ARE NOT REPRESENTATIVE OF THE FULL DATASET. THE SOUNDINGS REPRESENT THE MINIMUM DEPTH FOUND WITHIN THE 10X10 FOOT AREA CENTERED ON THE TEXT, DERIVED FROM A 1X1 FOOT AVERAGE DATASET AT CELL CENTER. THIS MAP SHOULD NOT BE USED FOR CHANNEL CLEARANCE OR VOLUME COMPUTATIONS. MINIMUM DEPTH DATA IS PRODUCED FOR STRIKE/SOAL REMOVAL OPERATIONS AND NOTICE TO NAVIGATION INTERESTS.

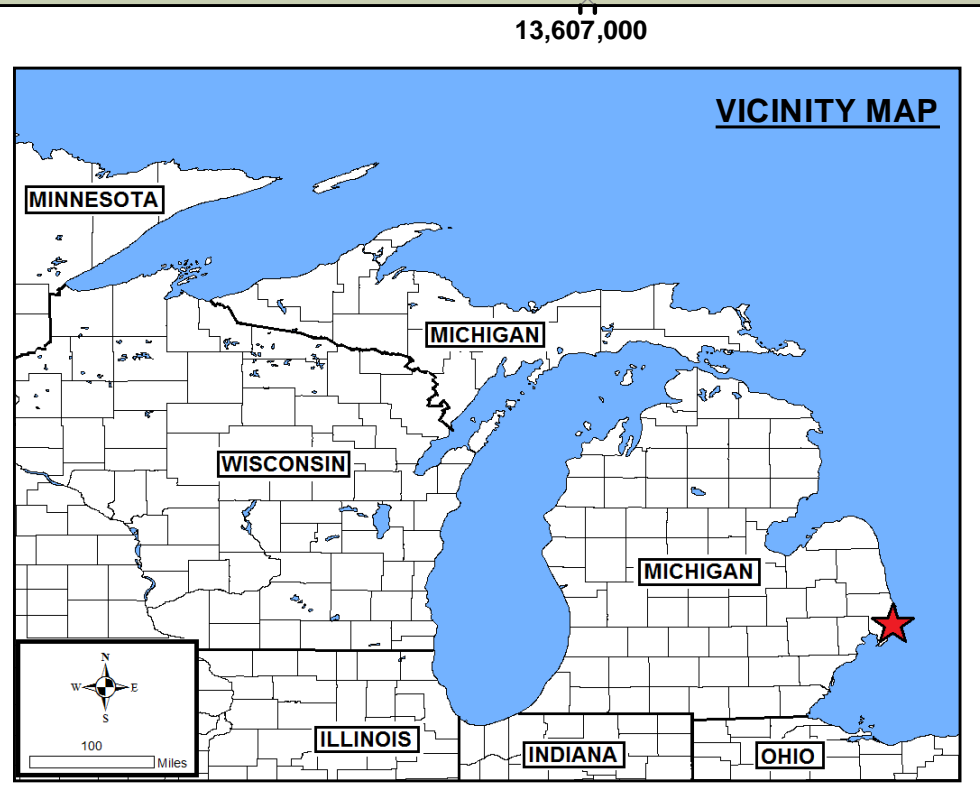
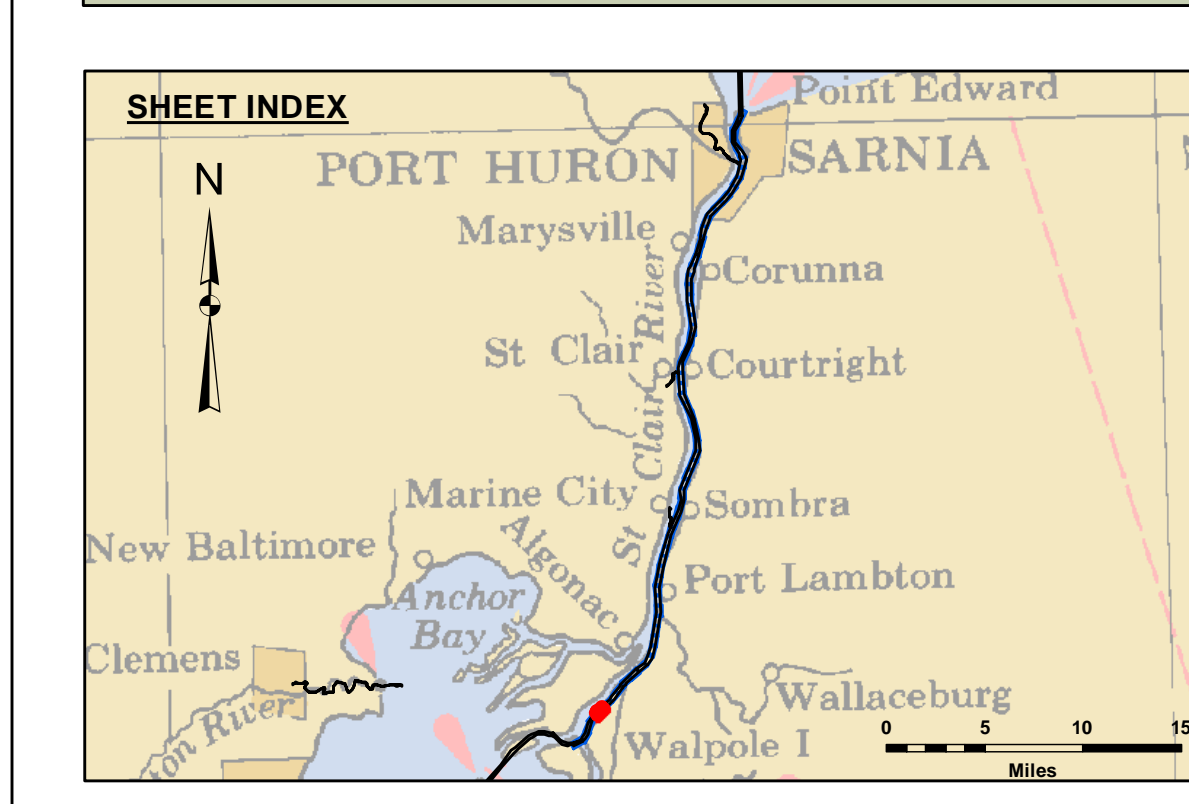
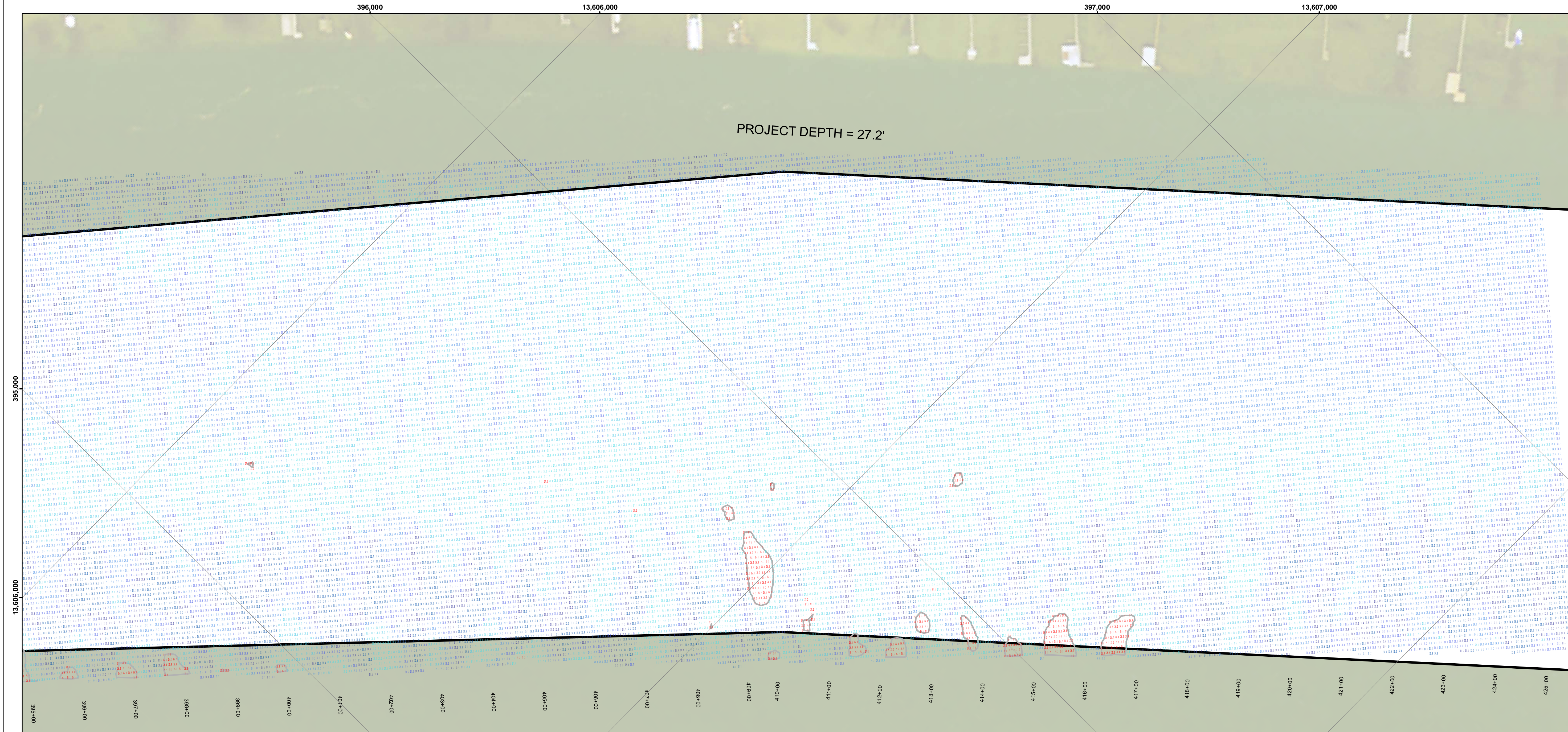
HORIZONTAL GRID DATUM BASED ON MICHIGAN STATE PLANE COORDINATE SYSTEM, LAMBERT PROJECTION, SOUTH ZONE (2113), NORTH AMERICAN DATUM 1983, U.S. SURVEY FOOT.

POSITIONING: APPLANIX POS-MV4 W/ VRS/RTK OR MARINESTAR GNSS.
MOTION COMPENSATION: APPLANIX POS-MV4
SONAR: R2SONIC 2024 (MULTIBEAM) OR ODOM CV-300 (SINGLEBEAM)
SOFTWARE: HYPACK

ALL SOUNDINGS ARE REFERENCED TO INTERNATIONAL GREAT LAKES DATUM OF 1985 (IGLD85). L.W.D. AS INDICATED. PROJECT DEPTHS FOR THIS RIVER RANGE FROM 27.1' TO 30.0'

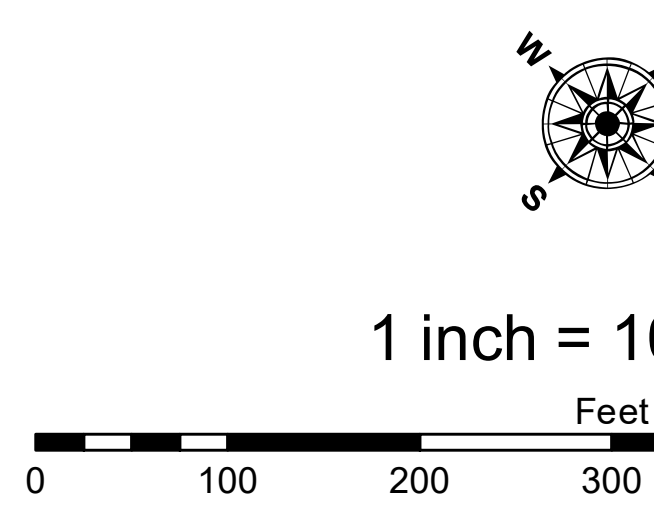
TIDE VALUES ARE DERIVED FROM THE NATIONAL OCEANIC AND ATMOSPHERIC ADMINISTRATION (NOAA)
WATER LEVEL STATIONS:
ST CLAIR SHOES □(#9034052)
ALGONAC, MI □(#9014070)
ST CLAIR POLICE, MI □(#9014080)
BLACK RIVER, MI □(#9014090)
DRY DOCK, MI □(#9014087)
DUNN PAPER, MI □(#9014096)

2010 AERIAL PHOTOGRAPHY DATA SOURCE: USGS. ALL COORDINATES ARE IN U.S. SURVEY FEET.



- LEGEND**
- Cable Submarine
 - - - Cable Overhead
 - Placement Area
 - ⊥ Beacon, General
 - Contour Lines
 - Channel Limits

- SOUNDING LEGEND**
- LESS THAN PROJECT DEPTH
 - PROJECT DEPTH
 - PROJECT DEPTH + 1'
 - PROJECT DEPTH + 2'
 - PROJECT DEPTH + 3'
 - PROJECT DEPTH + 4'
 - PROJECT DEPTH + 5'



1 inch = 100 feet

NOTES: THE INFORMATION DEPICTED ON THIS MAP REPRESENTS THE RESULTS OF SURVEYS MADE ON THE DATES INDICATED AND CAN ONLY BE CONSIDERED AS INDICATING THE GENERAL CONDITIONS AT THE TIME.

FOR MULTIBEAM SURVEYS: THE SOUNDINGS INDICATED HEREIN ARE GENERALIZED DEPTHS AND ARE NOT REPRESENTATIVE OF THE MINIMUM DEPTH FOUND WITHIN THE 10X10 FOOT AREA CENTERED ON THE TEXT. DERIVED FROM A 1X1 FOOT AVERAGE DATASET AT CELL CENTER. THIS MAP SHOULD NOT BE USED FOR CHANNEL CLEARANCE OR VOLUME COMPUTATIONS. MINIMUM DEPTH DATA IS PRODUCED FOR STRIKE/SOAL REMOVAL OPERATIONS AND NOTICE TO NAVIGATION INTERESTS.

HORIZONTAL GRID DATUM BASED ON MICHIGAN STATE PLANE COORDINATE SYSTEM, LAMBERT PROJECTION, SOUTH ZONE (2113), NORTH AMERICAN DATUM 1983, U.S. SURVEY FOOT.

POSITIONING: APPLANIX POS-MV4 W/ VRS/RTK OR MARINESTAR GNSS
MOTION COMPENSATION: APPLANIX POS-MV4
SONAR: R2SONIC 2024 (MULTIBEAM) OR ODOM CV-300 (SINGLEBEAM)
SOFTWARE: HYPAACK

ALL SOUNDINGS ARE REFERENCED TO INTERNATIONAL GREAT LAKES DATUM OF 1985 (IGLD85). L.W.D. AS INDICATED. PROJECT DEPTHS FOR THIS RIVER RANGE FROM 27.1' TO 30.0'.

TIDE VALUES ARE DERIVED FROM THE NATIONAL OCEANIC AND ATMOSPHERIC ADMINISTRATION (NOAA) WATER LEVEL STATIONS:
ST CLAIR SHORES (19034052)
ST CLAIR SHORES (19034050)
ST CLAIR POLICE, MI (19014080)
BLACK RIVER, MI (19014090)
DRY DOCK, MI (19014090)
DUNN PAPER, MI (19014090)

2010 AERIAL PHOTOGRAPHY DATA SOURCE: USGS. ALL COORDINATES ARE IN U.S. SURVEY FEET.



The user assumes the responsibility of data collection, interpretation, and use. The Corps of Engineers is not responsible for the results of any application of the data for other than its intended purpose. The user is responsible for the results of any application of the data for other than its intended purpose.

DISCLAIMER: The United States Government (USG) and its agencies and the recipient accept and use them with the express understanding that the data are not to be used for any purpose other than that for which they were provided. The USG makes no warranty, expressed or implied concerning the accuracy, completeness, reliability, or suitability of the data for any particular purpose. The data are provided "as is" and the recipient is responsible for the results of any application of the data for other than its intended purpose. These data are not to be used for any purpose other than that for which they were provided. The recipient may not transfer these data to others without also transferring this disclaimer.

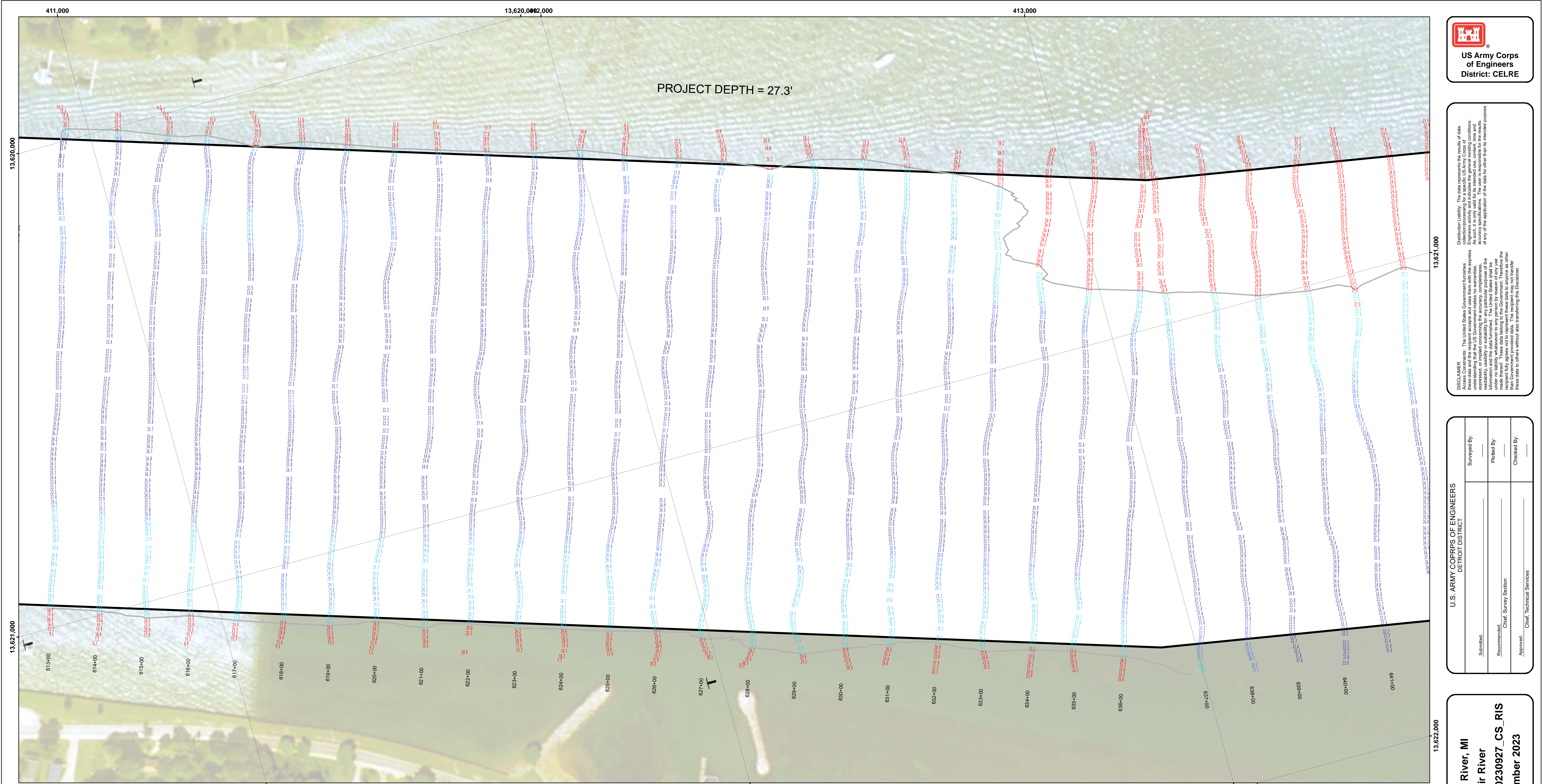
Surveyed By: _____
Plotted By: _____
Checked By: _____
Submitted: _____
Recommended: _____
Approved: _____

U.S. ARMY CORPS OF ENGINEERS
DETROIT DISTRICT

St. Clair River, MI
St. Clair River
CR_01_SCR_20231018_CS_TS
18 October 2023

Sheet
Reference
Number
5 of 69

Revision Number:
4.2 3/2016/2020



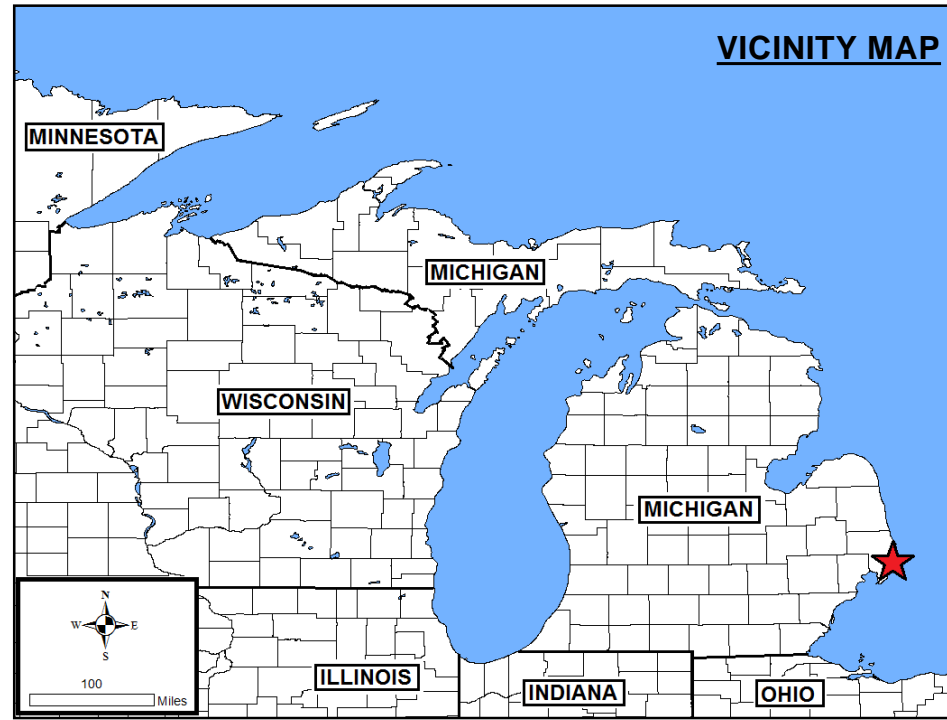
DISCLAIMER: The data presented in this map is the result of data collection operations for a specific US Army Corps of Engineers activity and indicates the general existing conditions. The user is responsible for the results of any of the application of the data for other than its intended purpose.

DISCLAIMER: The United States Government furnishes these data and the recipient accepts and uses them with the express understanding that the data are not to be used for any purpose other than that for which they were prepared, and that the Government makes no warranty, expressed, or implied concerning the accuracy, completeness, reliability, usability or suitability for any particular purpose of the data. The user is responsible for the results of any of the application of the data for other than its intended purpose. These data are not to be used for any purpose other than that for which they were prepared, and that the Government makes no warranty, expressed, or implied concerning the accuracy, completeness, reliability, usability or suitability for any particular purpose of the data. The user is responsible for the results of any of the application of the data for other than its intended purpose. These data are not to be used for any purpose other than that for which they were prepared, and that the Government makes no warranty, expressed, or implied concerning the accuracy, completeness, reliability, usability or suitability for any particular purpose of the data. The user is responsible for the results of any of the application of the data for other than its intended purpose.

U.S. ARMY CORPS OF ENGINEERS DETROIT DISTRICT	
Submitted:	Surveyed By:
Recommended:	Plotted By:
Approved:	Checked By:

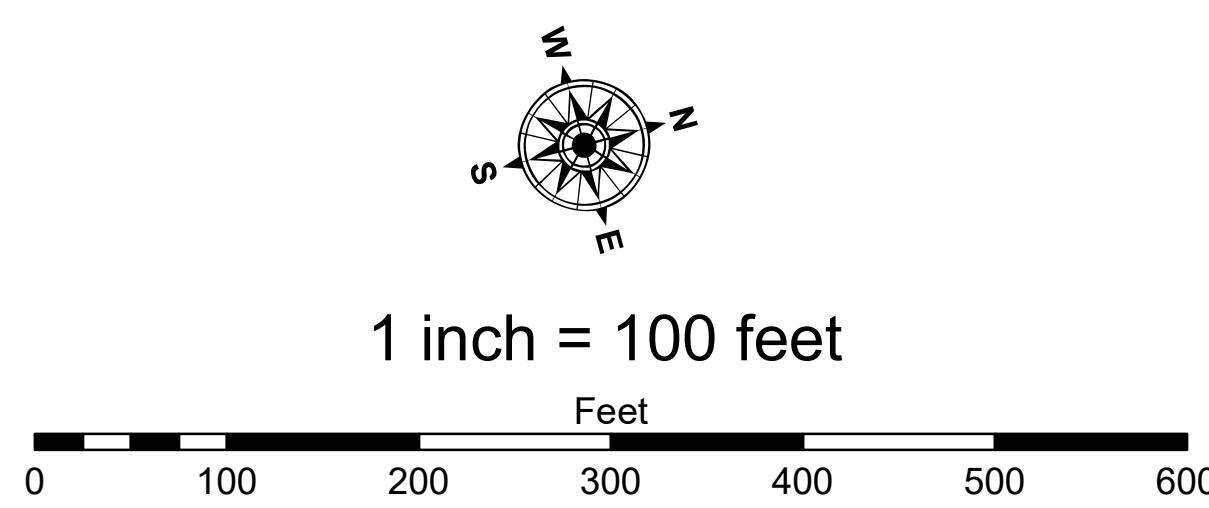
St. Clair River, MI
St Clair River
CR_01_SCR_20230927_CS_RIS
27 September 2023

Sheet
Reference
Number
13 of 69



- LEGEND**
- Cable Submarine
 - - - Cable Overhead
 - Placement Area
 - ⊥ Beacon, General
 - Contour Lines
 - Channel Limits

- SOUNDING LEGEND**
- LESS THAN PROJECT DEPTH
 - PROJECT DEPTH
 - PROJECT DEPTH +1'
 - PROJECT DEPTH +2'
 - PROJECT DEPTH +3'
 - PROJECT DEPTH +4'
 - PROJECT DEPTH +5'



NOTES:

THE INFORMATION DEPICTED ON THIS MAP REPRESENTS THE RESULTS OF SURVEYS MADE ON THE DATES INDICATED AND CAN ONLY BE CONSIDERED AS INDICATING THE GENERAL CONDITIONS AT THE TIME.

FOR MULTIBEAM SURVEYS: THE SOUNDINGS INDICATED HEREIN ARE GENERALIZED DEPTHS AND ARE NOT REPRESENTATIVE OF THE FULL DATASET. THE SOUNDINGS REPRESENT THE MINIMUM DEPTH FOUND WITHIN THE 10X10 FOOT AREA CENTERED ON THE TEXT, DERIVED FROM A 1X1 FOOT AVERAGE DATASET AT CELL CENTER. THIS MAP SHOULD NOT BE USED FOR CHANNEL CLEARANCE OR VOLUME COMPUTATIONS. MINIMUM DEPTH DATA IS PRODUCED FOR STRIKE/SOAL REMOVAL OPERATIONS AND NOTICE TO NAVIGATION INTERESTS.

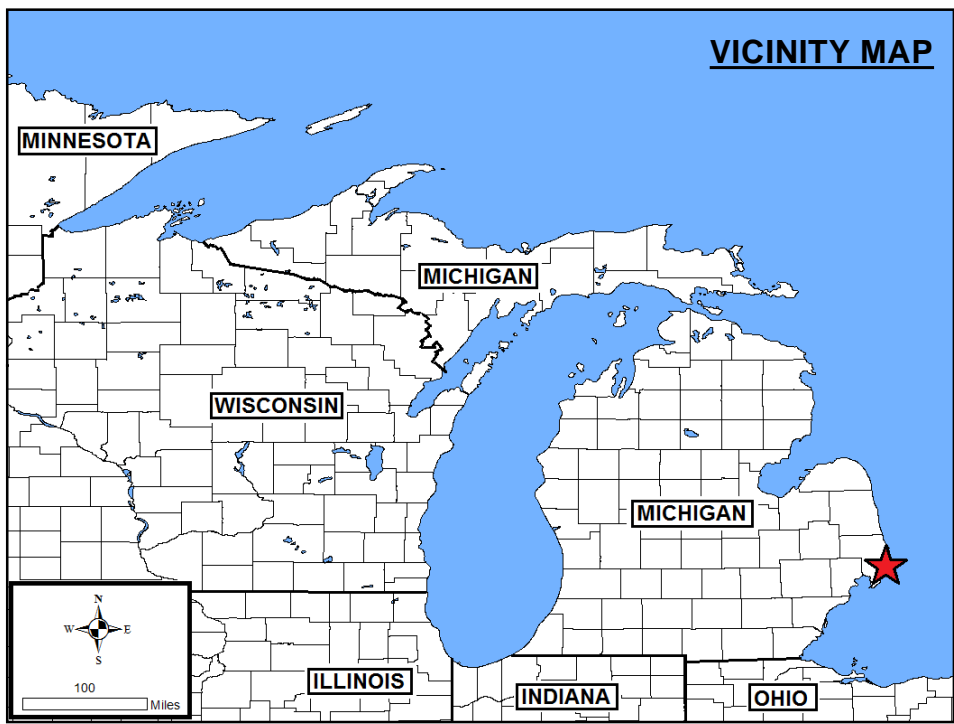
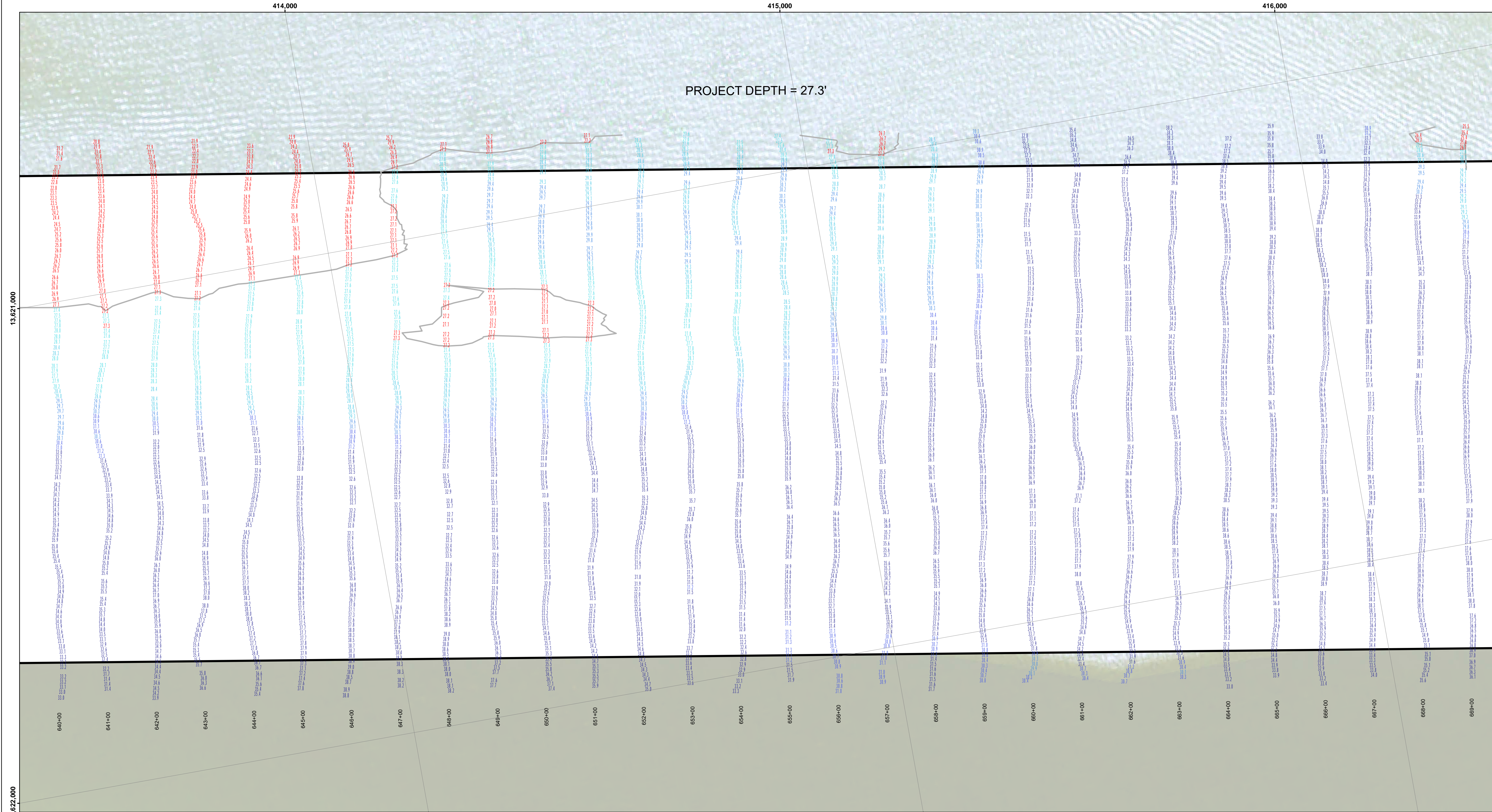
HORIZONTAL GRID DATUM BASED ON MICHIGAN STATE PLANE COORDINATE SYSTEM, LAMBERT PROJECTION, SOUTH ZONE (2113), NORTH AMERICAN DATUM 1983, U.S. SURVEY FOOT.

POSITIONING: APPLANIX POS-MV4 W/ VRS/RTK OR MARINESTAR GNSS.
MOTION COMPENSATION: APPLANIX POS-MV4
SONAR: R2SONIC 2024 (MULTIBEAM) OR ODOM CV-300 (SINGLEBEAM)
SOFTWARE: HYPACK

ALL SOUNDINGS ARE REFERENCED TO INTERNATIONAL GREAT LAKES DATUM OF 1985 (IGLD85). L.W.D. AS INDICATED. PROJECT DEPTHS FOR THIS RIVER RANGE FROM 27.1' TO 30.0'

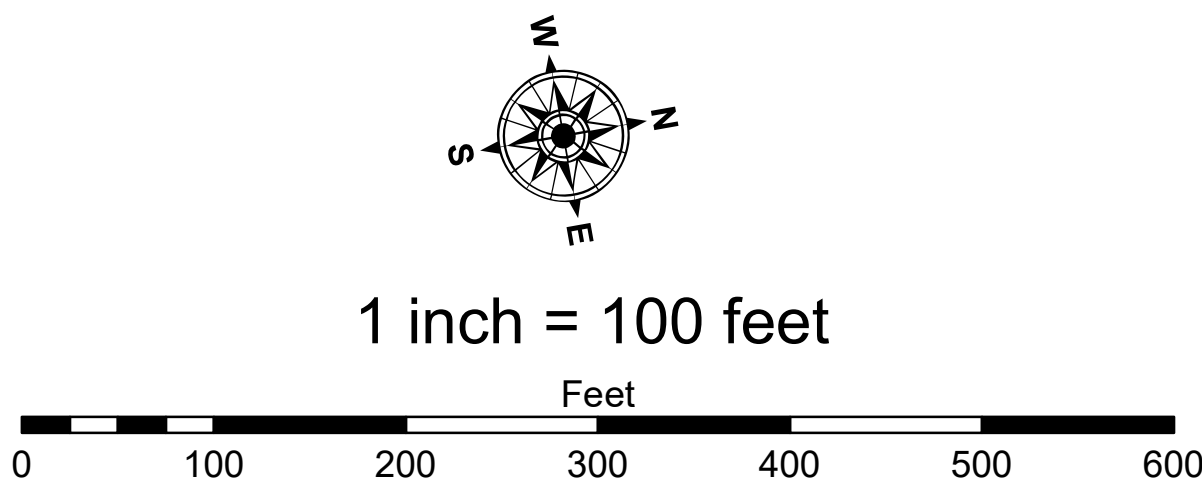
TIDE VALUES ARE DERIVED FROM THE NATIONAL OCEANIC AND ATMOSPHERIC ADMINISTRATION (NOAA) WATER LEVEL STATIONS:
ST CLAIR SHORES, MI (#9034052)
ALCONAC, MI (#9014070)
ST CLAIR POLICE, MI (#9014080)
BLACK RIVER, MI (#9014090)
DRY DOCK, MI (#9014087)
DUNN PAPER, MI (#9014096)

2010 AERIAL PHOTOGRAPHY DATA SOURCE: USGS. ALL COORDINATES ARE IN U.S. SURVEY FEET.



- LEGEND**
- Cable Submarine
 - - - Cable Overhead
 - Placement Area
 - ⊥ Beacon, General
 - Contour Lines
 - Channel Limits

- SOUNDING LEGEND**
- LESS THAN PROJECT DEPTH
 - PROJECT DEPTH
 - PROJECT DEPTH +1'
 - PROJECT DEPTH +2'
 - PROJECT DEPTH +3'
 - PROJECT DEPTH +4'
 - PROJECT DEPTH +5'



NOTES:

THE INFORMATION DEPICTED ON THIS MAP REPRESENTS THE RESULTS OF SURVEYS MADE ON THE DATES INDICATED AND CAN ONLY BE CONSIDERED AS INDICATING THE GENERAL CONDITIONS AT THE TIME.

FOR MULTIBEAM SURVEYS: THE SOUNDINGS INDICATED HEREIN ARE GENERALIZED DEPTHS AND ARE NOT REPRESENTATIVE OF THE FULL DATASET. THE SOUNDINGS REPRESENT THE MINIMUM DEPTH FOUND WITHIN THE 10X10 FOOT AREA CENTERED ON THE TEXT, DERIVED FROM A 1X1 FOOT AVERAGE DATASET AT CELL CENTER. THIS MAP SHOULD NOT BE USED FOR CHANNEL CLEARANCE OR VOLUME COMPUTATIONS. MINIMUM DEPTH DATA IS PRODUCED FOR STRIKE/SOAL REMOVAL OPERATIONS AND NOTICE TO NAVIGATION INTERESTS.

HORIZONTAL GRID DATUM BASED ON MICHIGAN STATE PLANE COORDINATE SYSTEM, LAMBERT PROJECTION, SOUTH ZONE (2113), NORTH AMERICAN DATUM 1983, U.S. SURVEY FOOT.

POSITIONING: APPLANIX POS-MV4 W/ VRS/RTK OR MARINESTAR GNSS.
MOTION COMPENSATION: APPLANIX POS-MV4
SONAR: R2SONIC 2024 (MULTIBEAM) OR ODOM CV-300 (SINGLEBEAM)
SOFTWARE: HYPACK

ALL SOUNDINGS ARE REFERENCED TO INTERNATIONAL GREAT LAKES DATUM OF 1985 (IGLD85). L.W.D. AS INDICATED. PROJECT DEPTHS FOR THIS RIVER RANGE FROM 27.1' TO 30.0'.

TIDE VALUES ARE DERIVED FROM THE NATIONAL OCEANIC AND ATMOSPHERIC ADMINISTRATION (NOAA) WATER LEVEL STATIONS:
ST CLAIR SHORES, MI (#9034052)
ALGONAC, MI (#9014070)
ST CLAIR POLICE, MI (#9014080)
BLACK RIVER, MI (#9014090)
DRY DOCK, MI (#9014087)
DUNN PAPER, MI (#9014096)

2010 AERIAL PHOTOGRAPHY DATA SOURCE: USGS. ALL COORDINATES ARE IN U.S. SURVEY FEET.

Submitted:	Surveyed By:
Recommended:	Plotted By:
Approved:	Checked By:

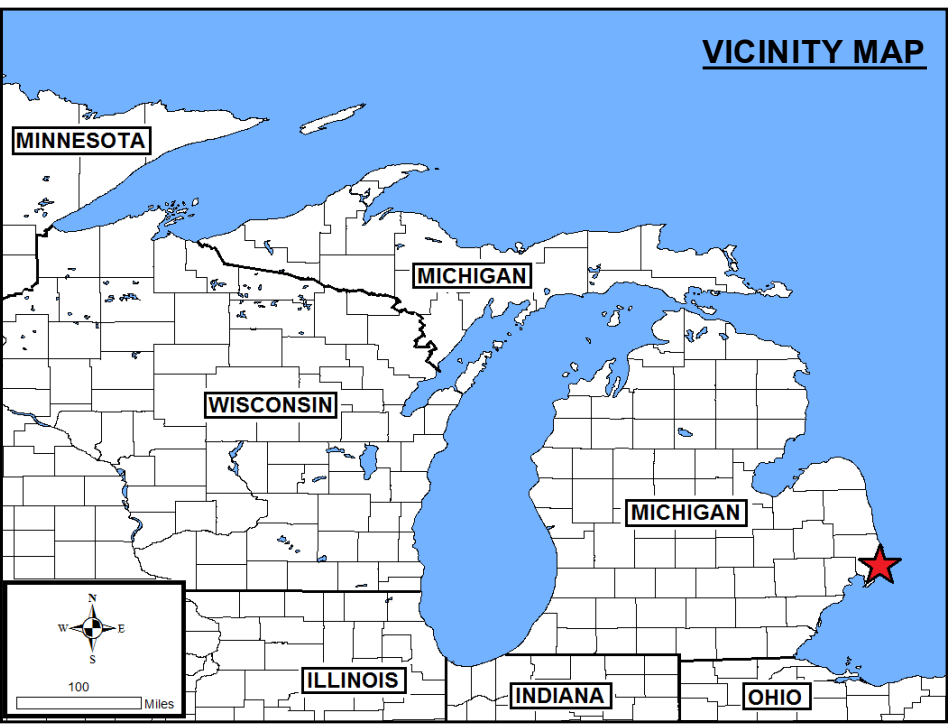
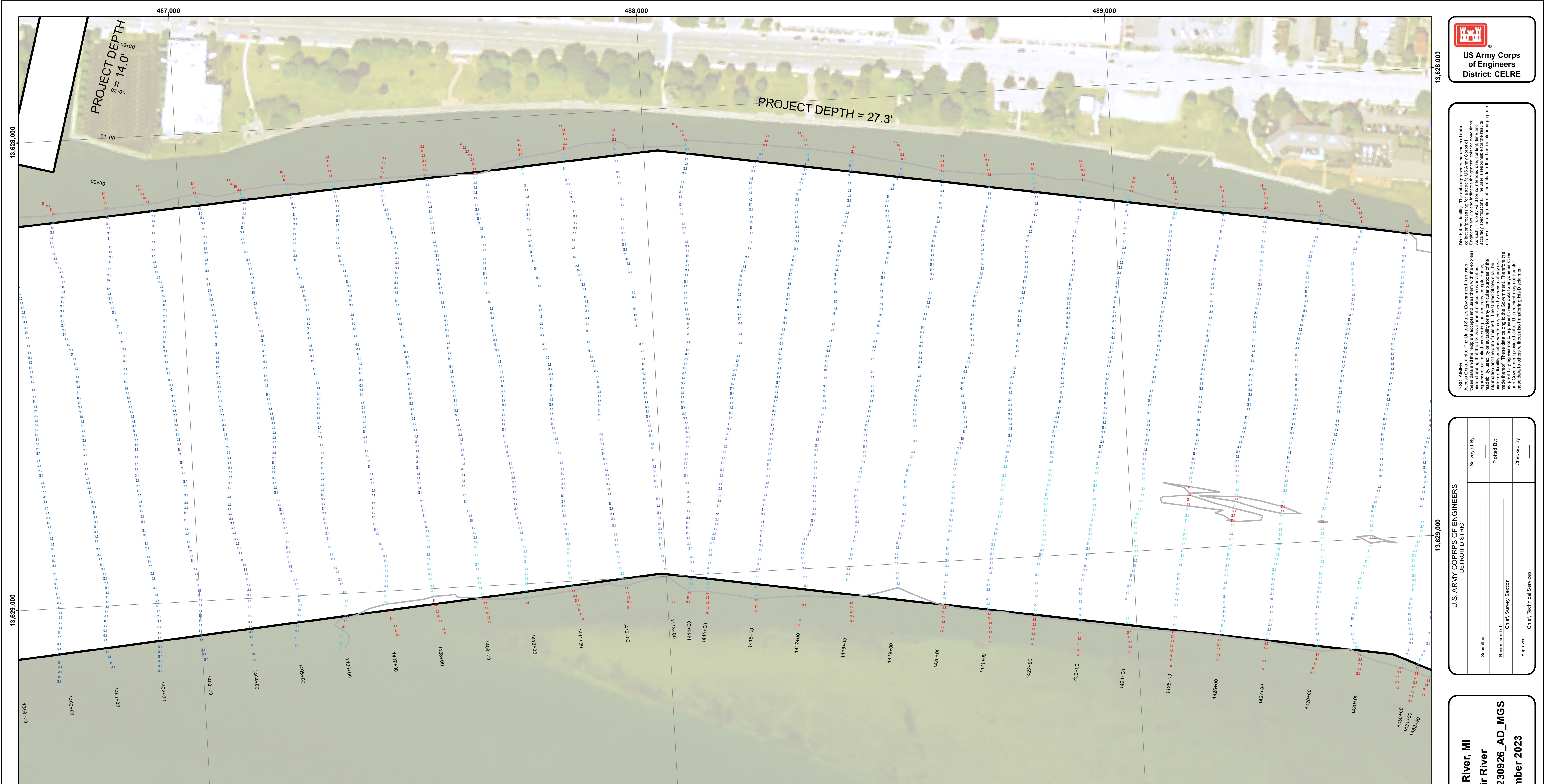
St. Clair River, MI
St. Clair River
CR_01_SCR_20230927_CS_RIS
27 September 2023

Sheet
Reference
Number
14 of 69

Revision Number:
4.2-2023MAY20

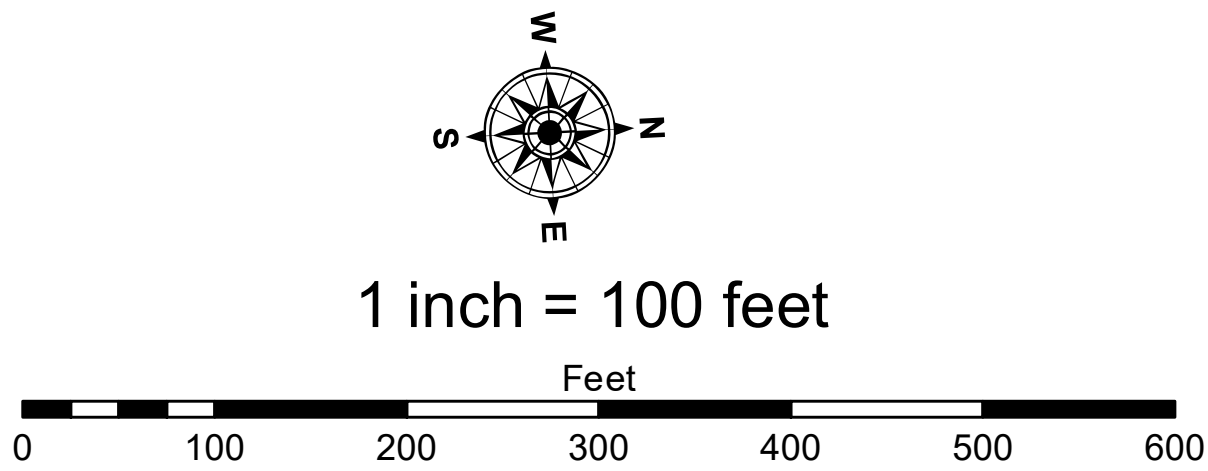


DISCLAIMER: The data represented on this map is the result of data collection operations for a specific US Army Corps of Engineers activity and indicates the general existing conditions. The user is responsible for the results of any application of the data for other than its intended purpose. The user is responsible for the results of any application of the data for other than its intended purpose.



- LEGEND**
- Cable Submarine
 - - - Cable Overhead
 - Placement Area
 - ⊥ Beacon, General
 - Contour Lines
 - ▭ Channel Limits

- SOUNDING LEGEND**
- LESS THAN PROJECT DEPTH
 - PROJECT DEPTH
 - PROJECT DEPTH +1'
 - PROJECT DEPTH +2'
 - PROJECT DEPTH +3'
 - PROJECT DEPTH +4'
 - PROJECT DEPTH +5'



NOTES:

THE INFORMATION DEPICTED ON THIS MAP REPRESENTS THE RESULTS OF SURVEYS MADE ON THE DATES INDICATED AND CAN ONLY BE CONSIDERED AS INDICATING THE GENERAL CONDITIONS AT THE TIME.

FOR MULTIBEAM SURVEYS: THE SOUNDINGS INDICATED HEREIN ARE GENERALIZED DEPTHS AND ARE NOT REPRESENTATIVE OF THE FULL DATASET. THE SOUNDINGS REPRESENT THE MINIMUM DEPTH FOUND WITHIN THE 10X10 FOOT AREA CENTERED ON THE TEXT, DERIVED FROM A 1X1 FOOT AVERAGE DATASET AT CELL CENTER. THIS MAP SHOULD NOT BE USED FOR CHANNEL CLEARANCE OR VOLUME COMPUTATIONS. MINIMUM DEPTH DATA IS PRODUCED FOR STRIKE/SOAL REMOVAL OPERATIONS AND NOTICE TO NAVIGATION INTERESTS.

HORIZONTAL GRID DATUM BASED ON MICHIGAN STATE PLANE COORDINATE SYSTEM, LAMBERT PROJECTION, SOUTH ZONE (2113), NORTH AMERICAN DATUM 1983, U.S. SURVEY FOOT.

POSITIONING: APPLANIX POS-MV4 W/ VRS/RTK OR MARINESTAR GNSS.
MOTION COMPENSATION: APPLANIX POS-MV4
SONAR: R2SONIC 2024 (MULTIBEAM) OR ODOM CV-300 (SINGLEBEAM)
SOFTWARE: HYPACK

ALL SOUNDINGS ARE REFERENCED TO INTERNATIONAL GREAT LAKES DATUM OF 1985 (IGLD85). L.W.D. AS INDICATED. PROJECT DEPTHS FOR THIS RIVER RANGE FROM 27.1' TO 30.0'

TIDE VALUES ARE DERIVED FROM THE NATIONAL OCEANIC AND ATMOSPHERIC ADMINISTRATION (NOAA)

WATER LEVEL STATIONS:
ST CLAIR SHORES (#9034052)
ALGONAC, MI (#9014070)
ST CLAIR POLICE, MI (#9014080)
BLACK RIVER, MI (#9014090)
DRY DOCK, MI (#9014087)
DUNN PAPER, MI (#9014096)

2010 AERIAL PHOTOGRAPHY DATA SOURCE: USGS. ALL COORDINATES ARE IN U.S. SURVEY FEET.



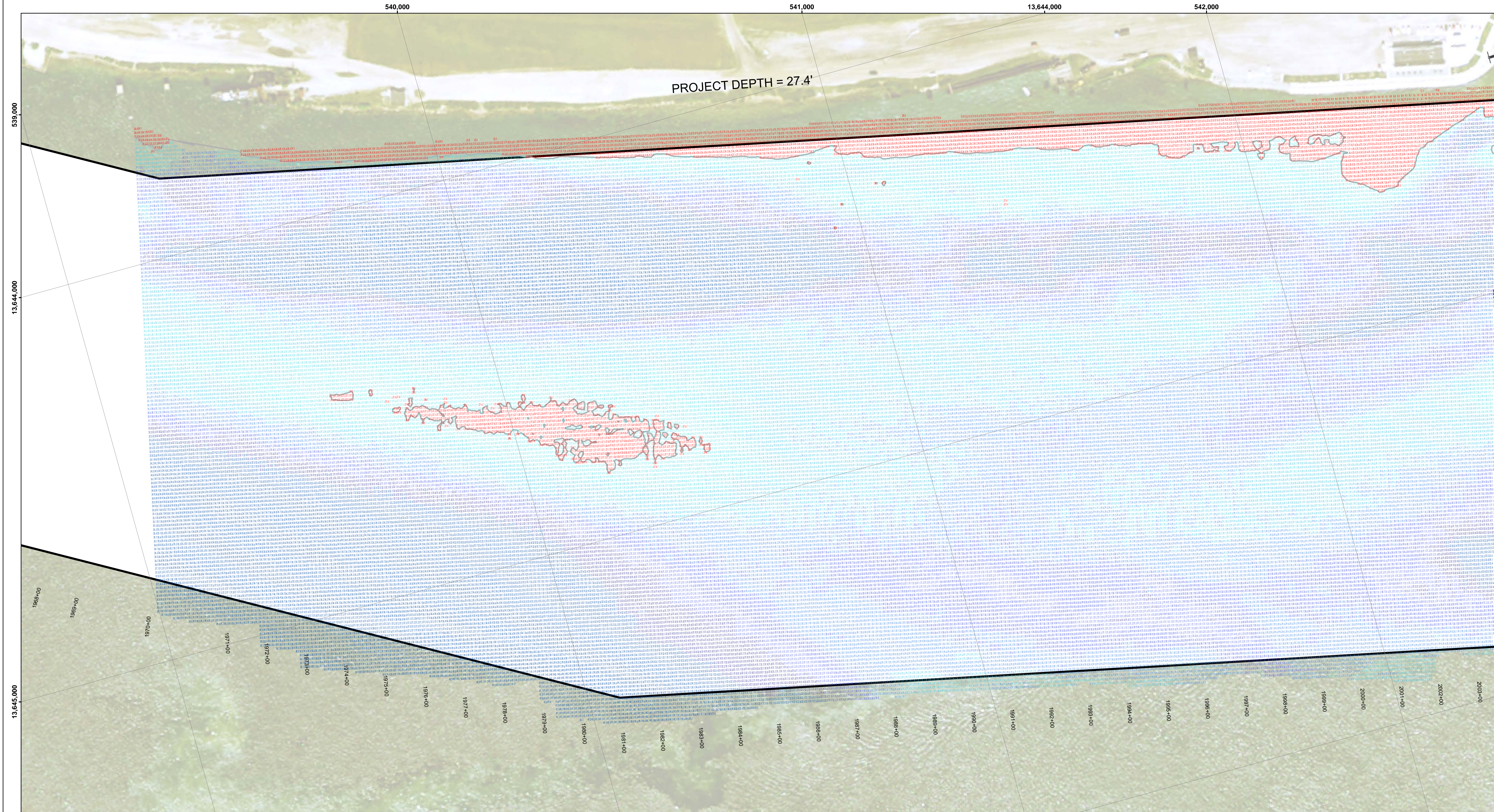
This data is for informational purposes only. The data represents the results of data collection and is not intended for use in any legal proceeding. The user is responsible for the accuracy, completeness, and reliability of the data. The user is responsible for the results of any application of the data for other than its intended purpose.

DISCLAIMER: The United States Government furnishes these data and the recipient accepts and uses them with the express understanding that the data are not intended for use in any legal proceeding, or implied concerning the accuracy, completeness, or reliability of the data for any particular purpose of the user. The data are provided "as is" without warranty of any kind, under no liability whatsoever to any person by reason of any use made thereof. These data belong to the Government. No part of these data shall be reproduced or transmitted in any form or by any means electronic or mechanical, including photocopying and recording, or by any information storage or retrieval system, except as may be permitted in writing by the Government. The recipient may not transfer these data to others without also transferring this disclaimer.

Submitted:	Surveyed By:
Recommended:	Plotted By:
Approved:	Checked By:
U.S. ARMY CORPS OF ENGINEERS DETROIT DISTRICT	

St. Clair River, MI
St. Clair River
CR_01_SCR_20230926_AD_MGS
26 September 2023

Sheet
Reference
Number
42 of 69



SHEET INDEX

VICINITY MAP

LEGEND

- Cable Submarine
- - - Cable Overhead
- Placement Area
- ⊥ Beacon, General
- Contour Lines
- Channel Limits

SOUNDING LEGEND

- LESS THAN PROJECT DEPTH
- PROJECT DEPTH
- PROJECT DEPTH +1'
- PROJECT DEPTH +2'
- PROJECT DEPTH +3'
- PROJECT DEPTH +4'
- PROJECT DEPTH +5'

NOTES:

THE INFORMATION DEPICTED ON THIS MAP REPRESENTS THE RESULTS OF SURVEYS MADE ON THE DATES INDICATED AND CAN ONLY BE CONSIDERED AS INDICATING THE GENERAL CONDITIONS AT THE TIME.

FOR MULTIBEAM SURVEYS: THE SOUNDINGS INDICATED HEREIN ARE GENERALIZED DEPTHS AND ARE NOT REPRESENTATIVE OF THE FULL DATASET. THE SOUNDINGS REPRESENT THE MINIMUM DEPTH FOUND WITHIN THE 10X10 FOOT AREA CENTERED ON THE TEXT, DERIVED FROM A 1X1 FOOT AVERAGE DATASET AT CELL CENTER. THIS MAP SHOULD NOT BE USED FOR CHANNEL CLEARANCE OR VOLUME COMPUTATIONS. MINIMUM DEPTH DATA IS PRODUCED FOR STRIKE/SOAL REMOVAL OPERATIONS AND NOTICE TO NAVIGATION INTERESTS.

HORIZONTAL GRID DATUM BASED ON MICHIGAN STATE PLANE COORDINATE SYSTEM, LAMBERT PROJECTION, SOUTH ZONE (2113), NORTH AMERICAN DATUM 1983, U.S. SURVEY FOOT.

POSITIONING: APPLANIX POS-MV4 W/ VRS/RTK OR MARINESTAR GNSS
MOTION COMPENSATION: APPLANIX POS-MV4
SONAR: R2SONIC 2024 (MULTIBEAM) OR ODOM CV-300 (SINGLEBEAM)
SOFTWARE: HYPAACK

ALL SOUNDINGS ARE REFERENCED TO INTERNATIONAL GREAT LAKES DATUM OF 1985 (IGLD85). L.W.D. AS INDICATED. PROJECT DEPTHS FOR THIS RIVER RANGE FROM 27.1 TO 30.0'

TIDE VALUES ARE DERIVED FROM THE NATIONAL OCEANIC AND ATMOSPHERIC ADMINISTRATION (NOAA) WATER LEVEL STATIONS:
ST CLAIR SHORES (19034052)
ALCONA, MI (1903070)
ST CLAIR POLICE, MI (19014080)
BLACK ROCK, MI (19014090)
DRY DOCK, MI (19014087)
DUNN PAPER, MI (19014096)

2010 AERIAL PHOTOGRAPHY DATA SOURCE: USGS. ALL COORDINATES ARE IN U.S. SURVEY FEET.

1 inch = 125 feet

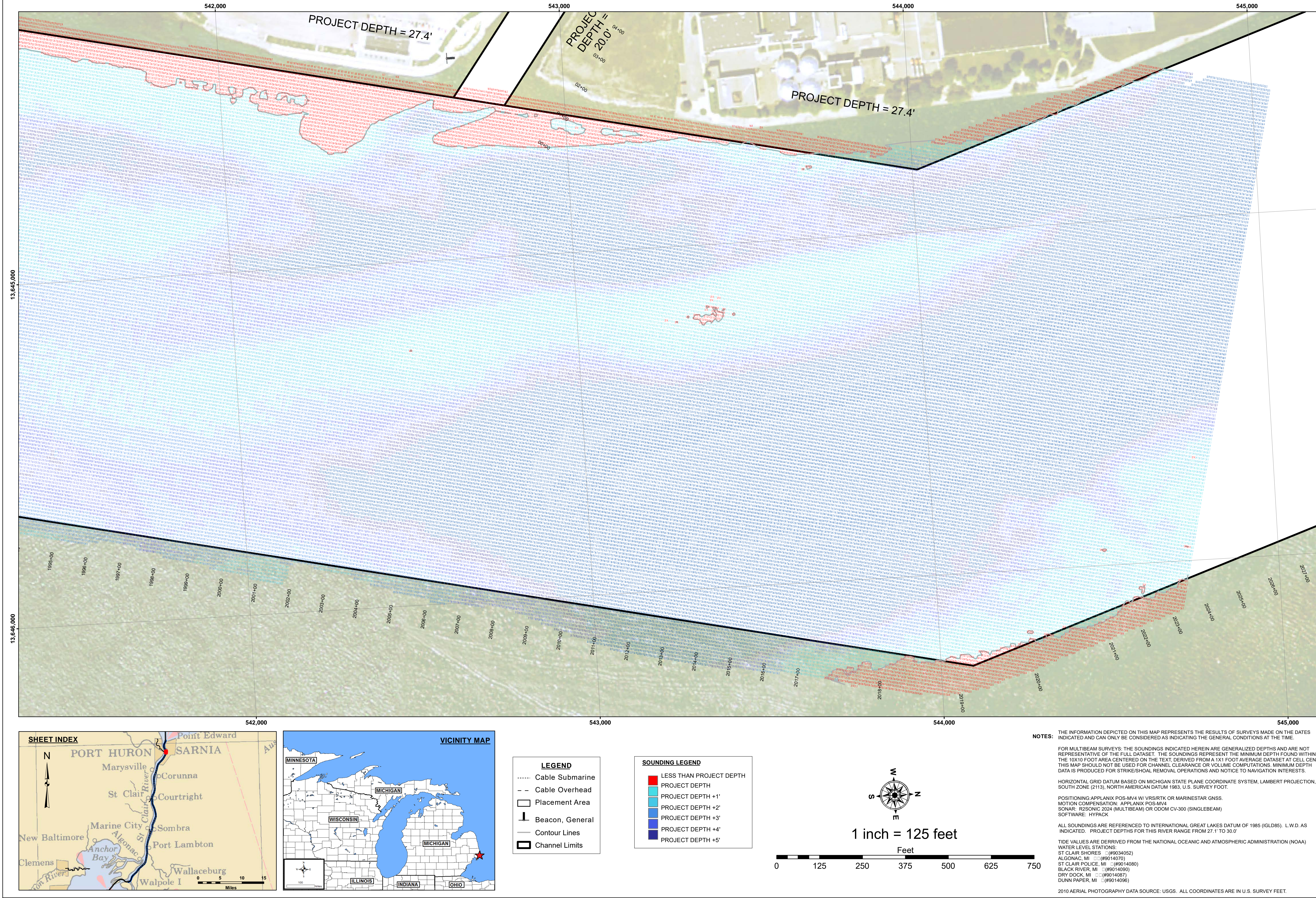


DISCLAIMER: The Corps of Engineers is not responsible for the use of the data for any purpose other than its intended purpose. Engineers activity and indicates the general existing conditions. The user is responsible for the use of the data for any purpose other than its intended purpose. If any of the application of the data for other than its intended purpose.

Surveyed By: _____
Plotted By: _____
Checked By: _____
Submitted: _____
Recommended: _____
Approved: _____

St. Clair River, MI
St. Clair River
CR_01_SCR_20231010_CS_BRS
10 October 2023

Sheet
Reference
Number
63 of 69



DISCLAIMER: The data and information on this map were collected using a variety of data sources. The data is not guaranteed to be accurate. The user is responsible for the results of any application of the data for other than its intended purpose.

DISCLAIMER: The United States Government furnishes this information as a service to the public. The data is not guaranteed to be accurate. The user is responsible for the results of any application of the data for other than its intended purpose.

Surveyed By: _____

Plotted By: _____

Checked By: _____

Submitted: _____

Recommended: _____

Approved: _____

U.S. ARMY CORPS OF ENGINEERS
DETROIT DISTRICT

St. Clair River, MI
St. Clair River

CR_01_SCR_20231010_CS_BRS

10 October 2023

Sheet
Reference
Number
64 of 69