

The data shown on this map is the result of data collected using the following equipment and methods. Engineers assume no responsibility for the accuracy of the data shown on this map. The user is responsible for the results of any application of the data for other than its intended purpose.

These data are to be used for informational purposes only. They are not to be used for legal or financial purposes. The user is responsible for the results of any application of the data for other than its intended purpose.

These data are to be used for informational purposes only. They are not to be used for legal or financial purposes. The user is responsible for the results of any application of the data for other than its intended purpose.

U.S. ARMY CORPS OF ENGINEERS
DETROIT DISTRICT

Surveyed By: _____

Plotted By: _____

Checked By: _____

Submitted: _____

Recommended: _____

Approved: _____

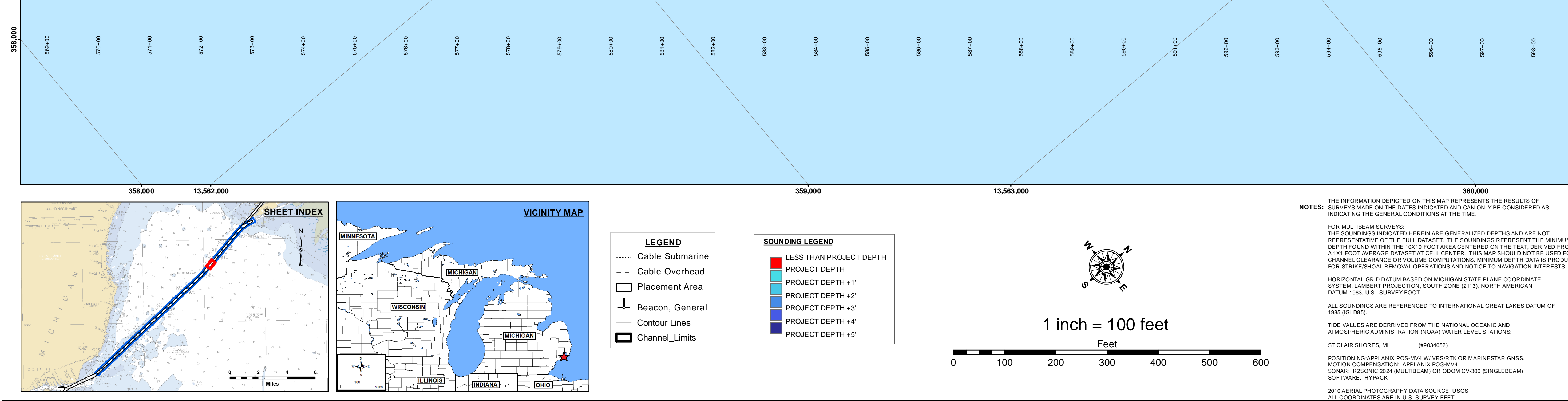
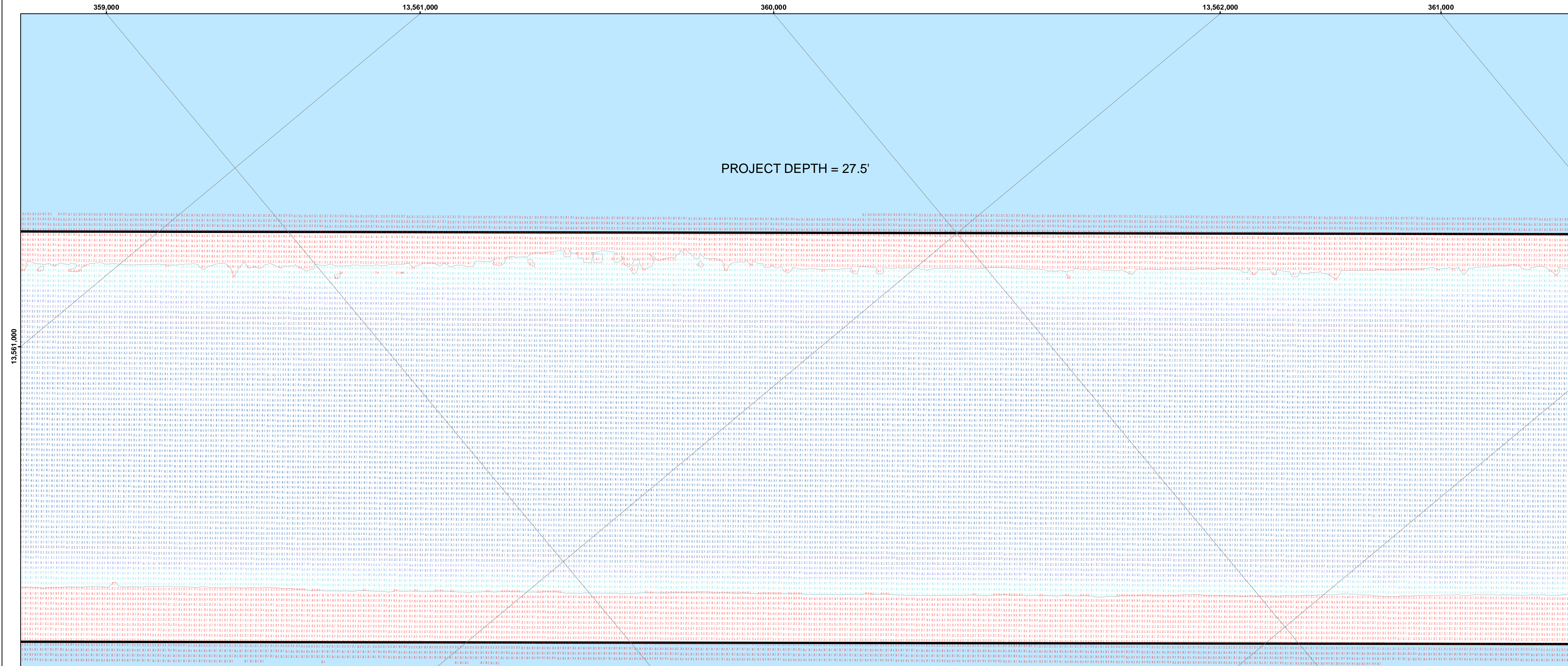
Chief, Survey Section

Chief, Technical Services

Channels in Lake St. Clair, MI
Channels of Lake St Clair
CL_01_LSC_20220929_BD
29 September 2022

Sheet
Reference
Number
21 of 30

Revision Number:
4.2 202406130



The data presented on this map represents the results of data collection conducted by the U.S. Army Corps of Engineers. The Corps of Engineers is not responsible for the accuracy, completeness, or reliability of the data for any purpose other than its intended purpose. The user is responsible for the application of the data for other than its intended purpose.

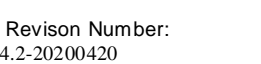
These data and the required acceptance and use of them with the greatest care and responsibility. The United States Government (including its agencies, departments, and commissions) does not warrant, represent, or guarantee the accuracy, completeness, or reliability of the data for any purpose other than its intended purpose. The user is responsible for the application of the data for other than its intended purpose.

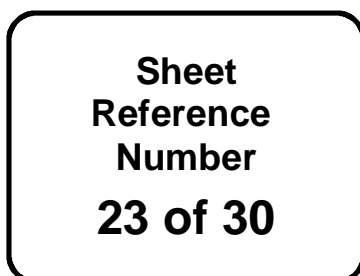
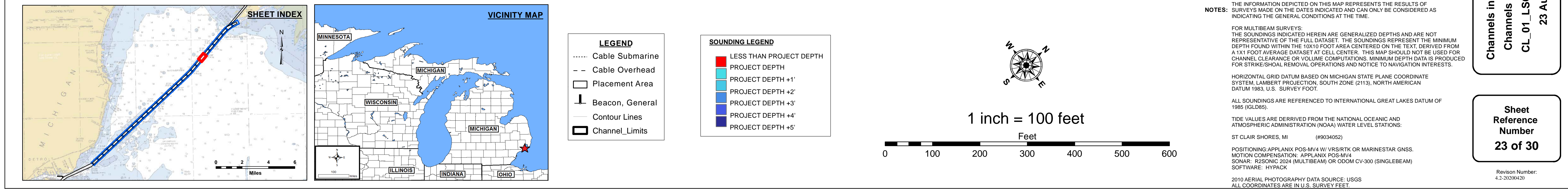
Surveyed By: _____
Plotted By: _____
Checked By: _____

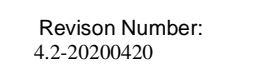
Submitted: _____
Recommended: _____
Approved: _____

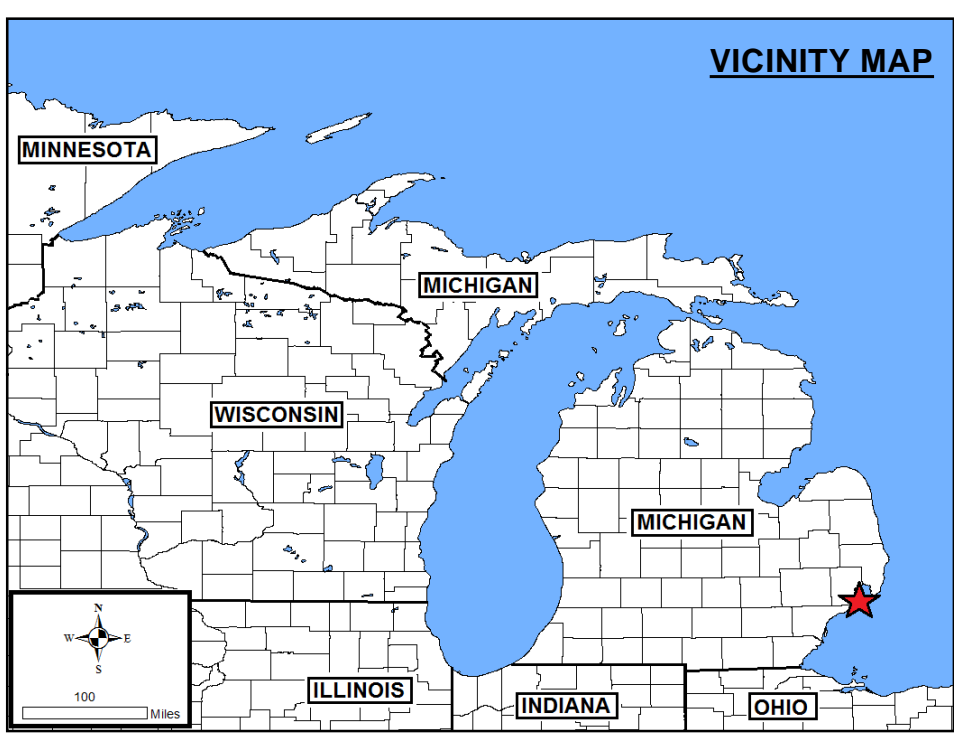
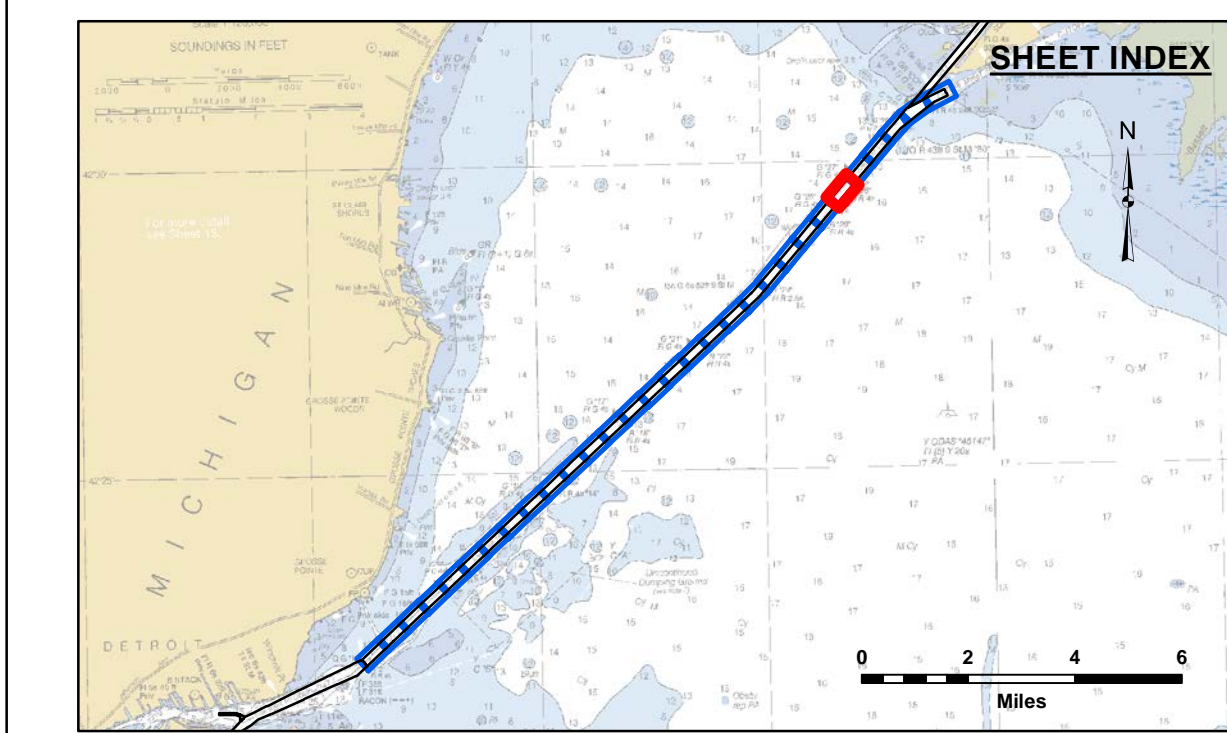
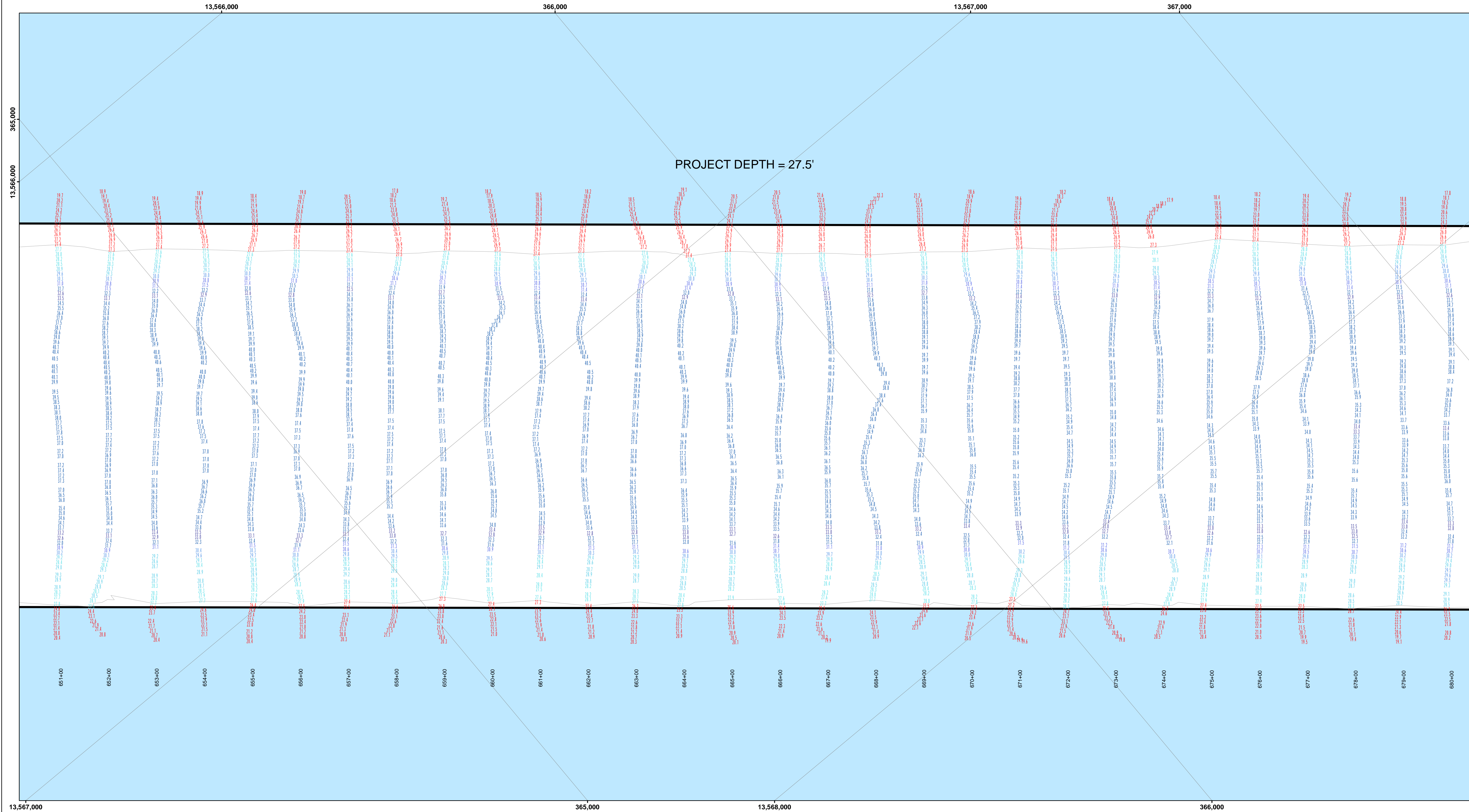
U.S. ARMY CORPS OF ENGINEERS
DETROIT DISTRICT

Channels in Lake St. Clair, MI
Channels of Lake St Clair
CL_01_LSC_20220929_BD
29 September 2022
Sheet Reference Number
22 of 30
Positioning: APPLINK POS-MV4 w/ VRS/RTK or MARINESTAR GNSS.
Motion Compensation: APPLINK POS-MV4.
Sonar: RSONIC 2024 (MULTIBeam) OR OMV CQ-300 (SINGLEBeam).
Software: HYACK.
Revision Number: 4.2 3/2006(20)







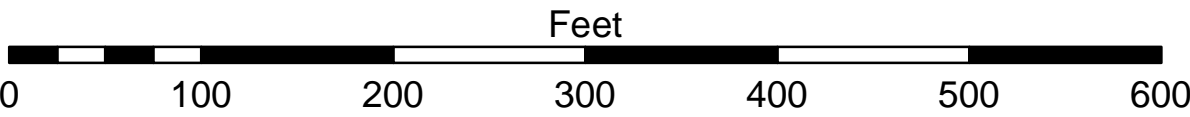


- LEGEND**
- Cable Submarine
 - - Cable Overhead
 - Placement Area
 - Beacon, General
 - Contour Lines
 - Channel_Limits

- SOUNDING LEGEND**
- LESS THAN PROJECT DEPTH
 - PROJECT DEPTH
 - PROJECT DEPTH +1'
 - PROJECT DEPTH +2'
 - PROJECT DEPTH +3'
 - PROJECT DEPTH +4'
 - PROJECT DEPTH +5'



1 inch = 100 feet



NOTES:

THE INFORMATION DEPICTED ON THIS MAP REPRESENTS THE RESULTS OF SURVEYS MADE ON THE DATES INDICATED AND CAN ONLY BE CONSIDERED AS INDICATING THE GENERAL CONDITIONS AT THE TIME.

FOR MULTIBEAM SURVEYS:
THE SOUNDINGS INDICATED HEREIN ARE GENERALIZED DEPTHS AND ARE NOT REPRESENTATIVE OF THE FULL DATASET. THE SOUNDINGS REPRESENT THE MINIMUM DEPTH FOUND WITHIN THE 10X10 FOOT AREA CENTERED ON THE TEXT. DERIVED FROM A 1X1 FOOT AVERAGE DATASET AT CELL CENTER. THIS MAP SHOULD NOT BE USED FOR CHANNEL CLEARANCE OR VOLUME COMPUTATIONS. MINIMUM DEPTH DATA IS PRODUCED FOR STRIKE/SOAL REMOVAL OPERATIONS AND NOTICE TO NAVIGATION INTERESTS.

HORIZONTAL GRID DATUM BASED ON MICHIGAN STATE PLANE COORDINATE SYSTEM, LAMBERT PROJECTION, SOUTH ZONE (2113), NORTH AMERICAN DATUM 1983, U.S. SURVEY FOOT.

ALL SOUNDINGS ARE REFERENCED TO INTERNATIONAL GREAT LAKES DATUM OF 1985 (IGLD85).

TIDE VALUES ARE DERIVED FROM THE NATIONAL OCEANIC AND ATMOSPHERIC ADMINISTRATION (NOAA) WATER LEVEL STATIONS.

ST CLAIR SHORES, MI (#9034052)

POSITIONING:APPLANIX POS-MV4 W/ VRS/RTK OR MARINESTAR GNSS.
MOTION COMPENSATION: APPLANIX POS-MV4
SONAR: POSNOIC 2024 (MULTIBEAM) OR ODOM CV-300 (SINGLEBEAM)
SOFTWARE: HYPACK

2010 AERIAL PHOTOGRAPHY DATA SOURCE: USGS
ALL COORDINATES ARE IN U.S. SURVEY FEET.

Channels in Lake St. Clair, MI
Channels of Lake St Clair
CL_01_LSC_20220823_CS
23 August 2022

Sheet
Reference
Number
25 of 30

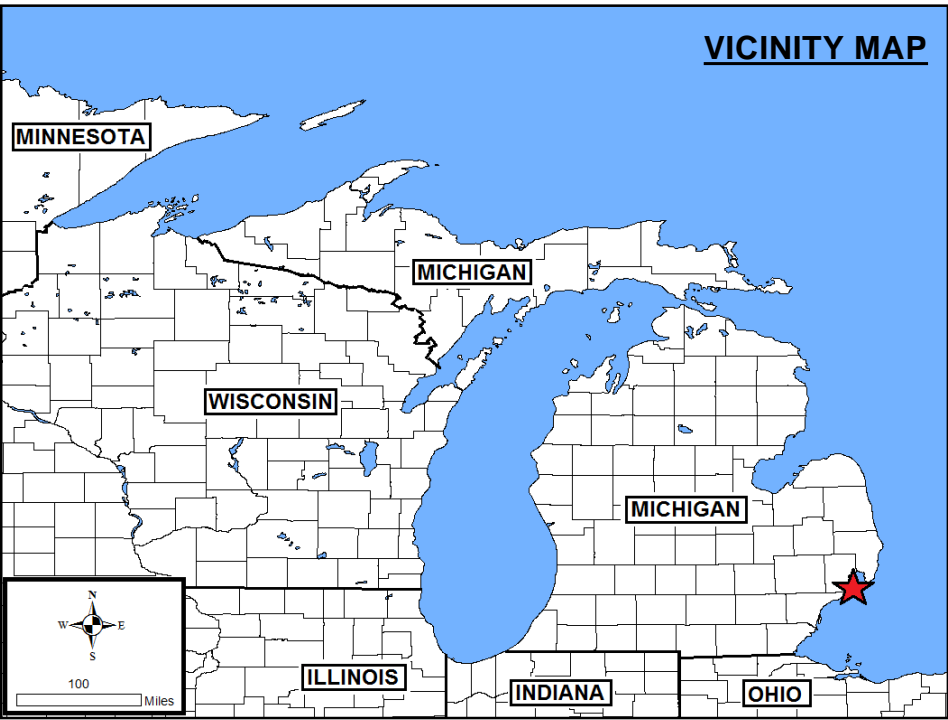
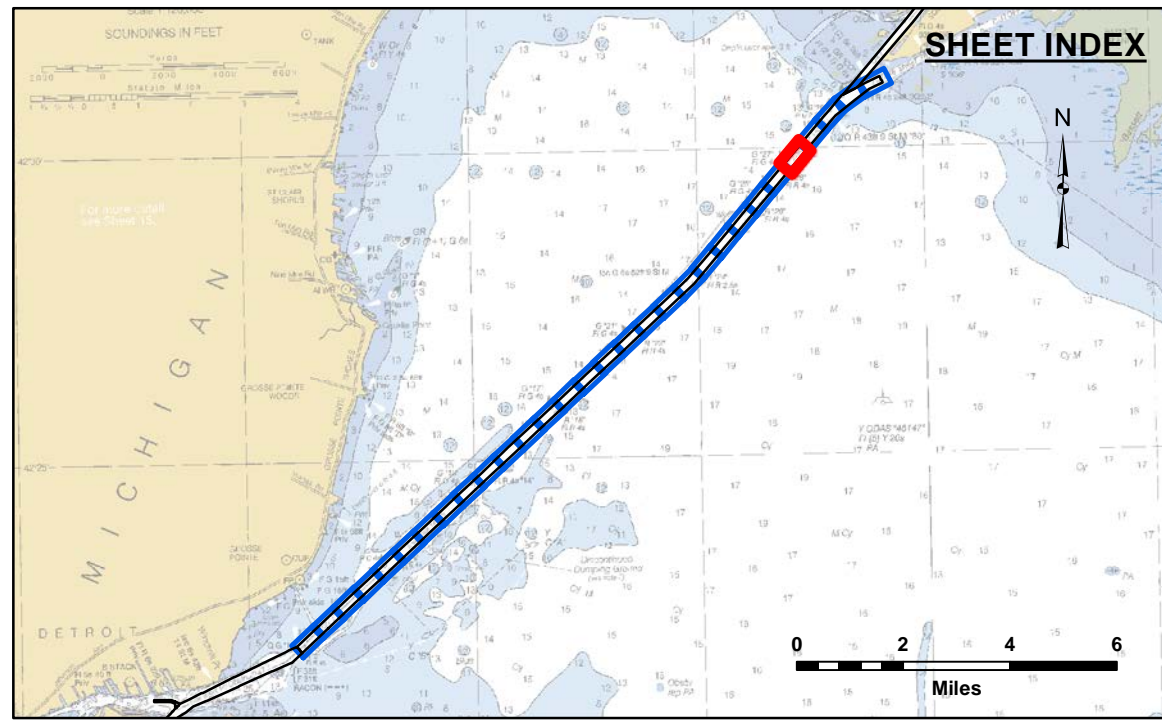
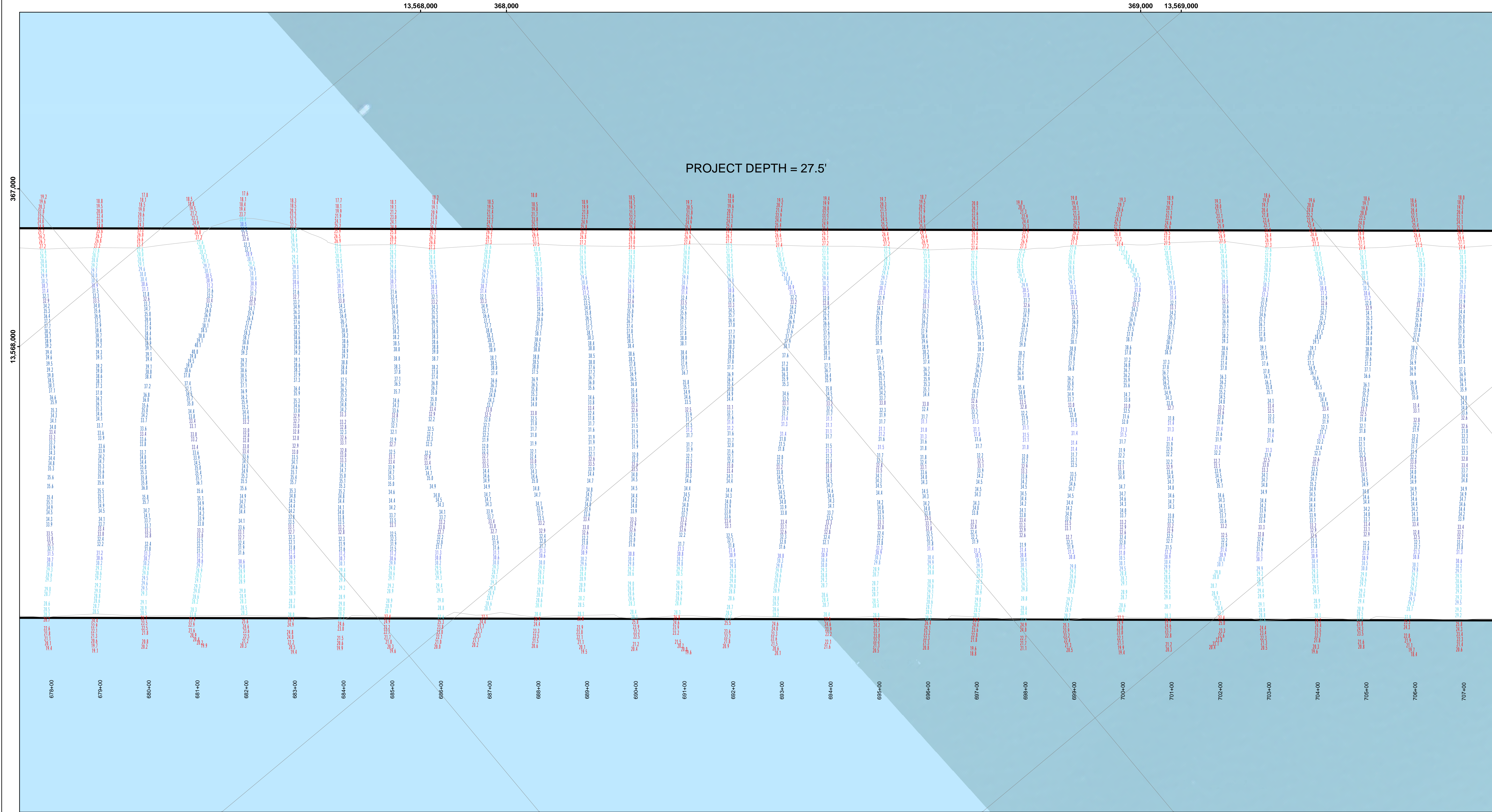
Revision Number:
4.2-2020MAY20



Disclaimer: Liability. The data represents the results of data collection operations for a specific US Army Corps of Engineers activity and indicates the general existing conditions. The user is responsible for the results of any of the application of the data for other than its intended purpose.

DISCLAIMER: The United States Government furnishes these data and the recipient accepts and uses them with the express understanding that the Government makes no warranty, expressed, or implied concerning the accuracy, completeness, reliability, utility or suitability for any particular purpose of the data. The data are provided "as is" and the Government makes no under no liability whatsoever to any person by reason of any use made thereof. These data belong to the Government. Therefore the recipient agrees to indemnify and hold the Government harmless from all claims, damages, losses, and expenses, including reasonable attorneys' fees, that the Government may incur as a result of the use of these data by others without also transferring the Disclaimer.

U.S. ARMY CORPS OF ENGINEERS DETROIT DISTRICT			
Submitted: _____	Surveyed By: _____		
Recommended: _____	Plotted By: _____		
Approved: _____	Checked By: _____		
Chief, Technical Services			

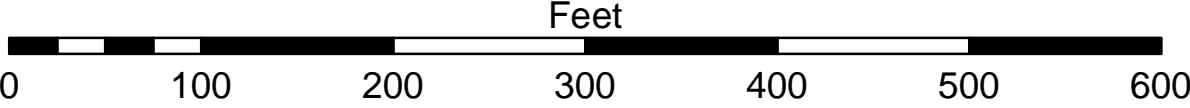


- LEGEND**
- Cable Submarine
 - - Cable Overhead
 - Placement Area
 - Beacon, General
 - Contour Lines
 - Channel Limits

- SOUNDING LEGEND**
- LESS THAN PROJECT DEPTH
 - PROJECT DEPTH
 - PROJECT DEPTH +1'
 - PROJECT DEPTH +2'
 - PROJECT DEPTH +3'
 - PROJECT DEPTH +4'
 - PROJECT DEPTH +5'



1 inch = 100 feet



NOTES:

THE INFORMATION DEPICTED ON THIS MAP REPRESENTS THE RESULTS OF SURVEYS MADE ON THE DATES INDICATED AND CAN ONLY BE CONSIDERED AS INDICATING THE GENERAL CONDITIONS AT THE TIME.

FOR MULTIBEAM SURVEYS:
THE SOUNDINGS INDICATED HEREIN ARE GENERALIZED DEPTHS AND ARE NOT REPRESENTATIVE OF THE FULL DATASET. THE SOUNDINGS REPRESENT THE MINIMUM DEPTH FOUND WITHIN THE 10X10 FOOT AREA CENTERED ON THE TEXT. DERIVED FROM A 1X1 FOOT AVERAGE DATASET AT CELL CENTER. THIS MAP SHOULD NOT BE USED FOR CHANNEL CLEARANCE OR VOLUME COMPUTATIONS. MINIMUM DEPTH DATA IS PRODUCED FOR STRIKE/SOAL REMOVAL OPERATIONS AND NOTICE TO NAVIGATION INTERESTS.

HORIZONTAL GRID DATUM BASED ON MICHIGAN STATE PLANE COORDINATE SYSTEM, LAMBERT PROJECTION, SOUTH ZONE (2113), NORTH AMERICAN DATUM 1983, U.S. SURVEY FOOT.

ALL SOUNDINGS ARE REFERENCED TO INTERNATIONAL GREAT LAKES DATUM OF 1985 (IGLD85).

TIDE VALUES ARE DERIVED FROM THE NATIONAL OCEANIC AND ATMOSPHERIC ADMINISTRATION (NOAA) WATER LEVEL STATIONS.

ST CLAIR SHORES, MI (#9034052)

POSITIONING: APPLANIX POS-MV4 W/ VRS/RTK OR MARINESTAR GNSS.
MOTION COMPENSATION: APPLANIX POS-MV4
SONAR: POSNOIC 2024 (MULTIBEAM) OR ODOM CV-300 (SINGLEBEAM)
SOFTWARE: HYPACK

2010 AERIAL PHOTOGRAPHY DATA SOURCE: USGS
ALL COORDINATES ARE IN U.S. SURVEY FEET.

Channels in Lake St. Clair, MI
Channels of Lake St Clair
CL_01_LSC_20220823_CS
23 August 2022

Sheet
Reference
Number
26 of 30

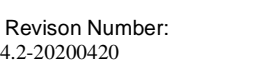
Revision Number:
4.2-20200420

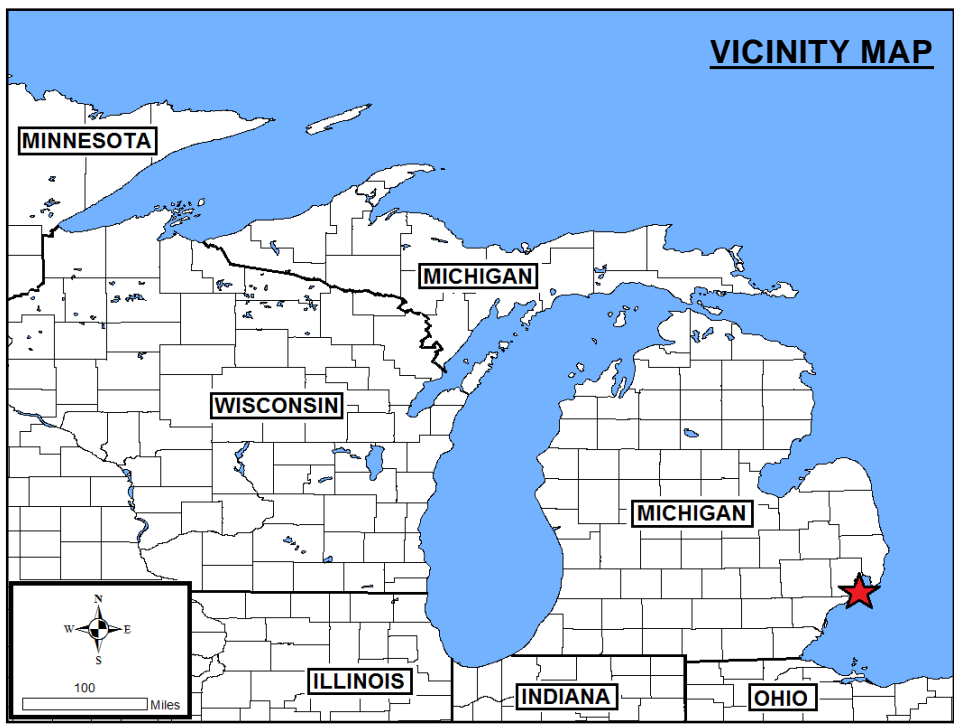
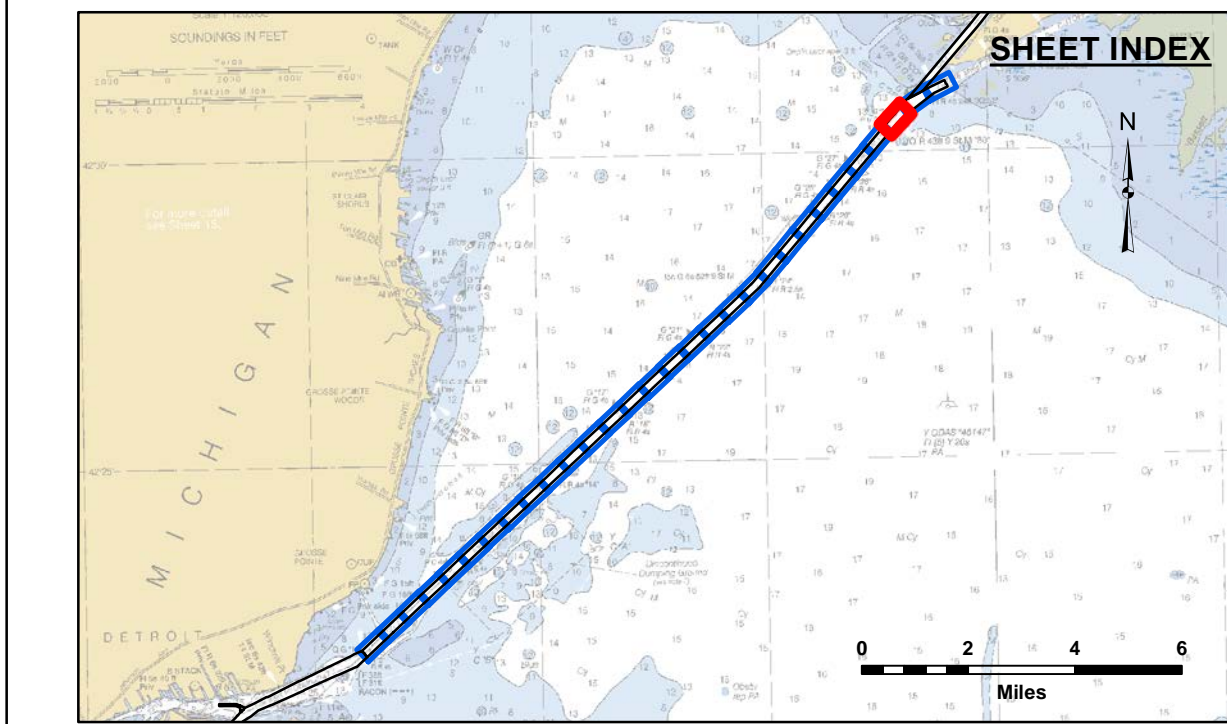
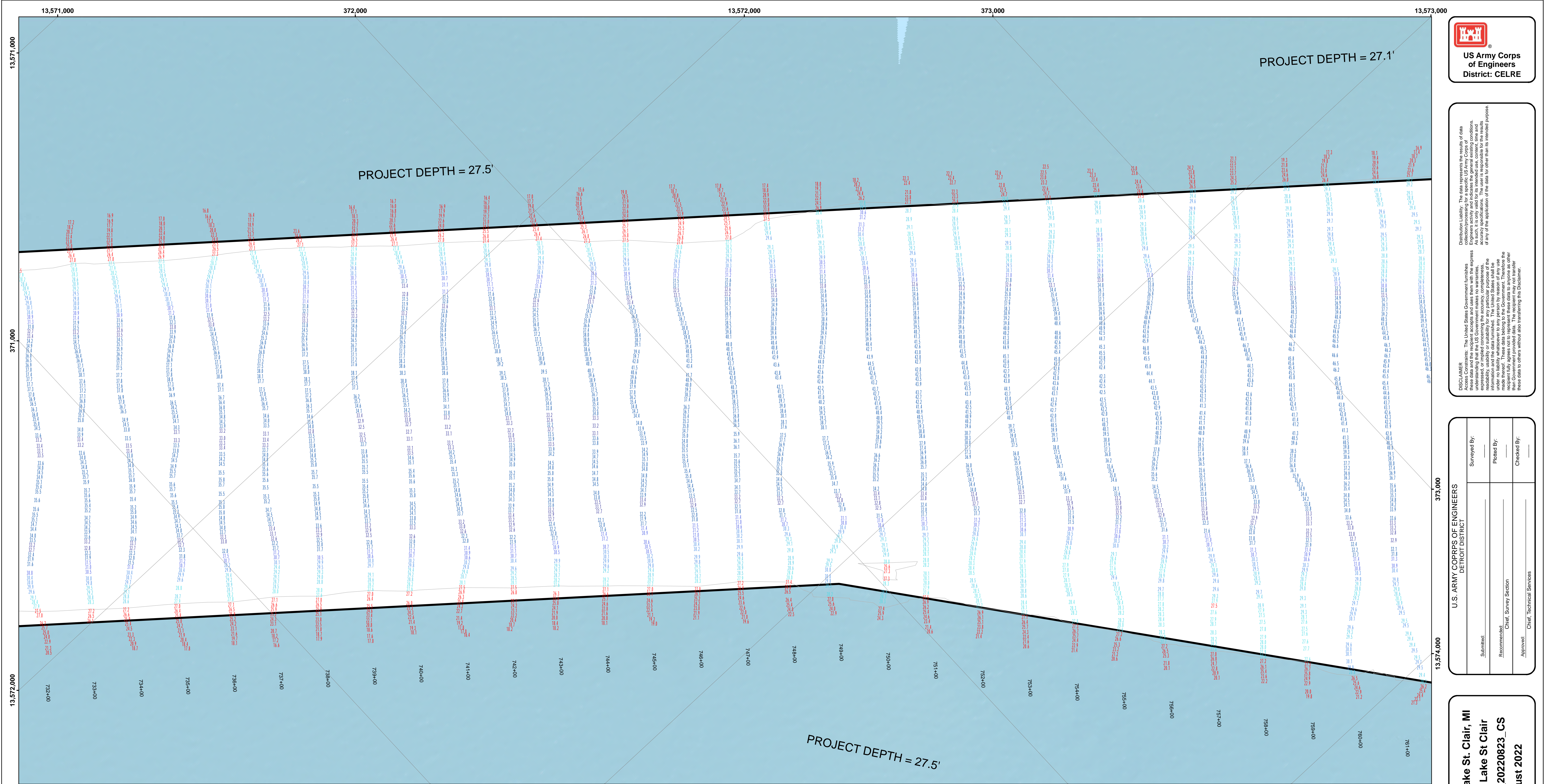


Disclaimer: The data represented on this map is the property of the United States Government. The data is provided for informational purposes only and does not constitute a warranty of accuracy. The user is responsible for the results of any application of the data for other than its intended purpose. The user is responsible for the results of any application of the data for other than its intended purpose.

Accession: The United States Government furnishes these data and the recipient accepts and uses them with the express understanding that the data are not to be used for any purpose other than that for which they were provided. The user is responsible for the results of any application of the data for other than its intended purpose. The user is responsible for the results of any application of the data for other than its intended purpose.

Submitted:	Surveyed By:	
	Plotted By:	
	Checked By:	
Recommended:	Chief, Survey Section	
Approved:	Chief, Technical Services	



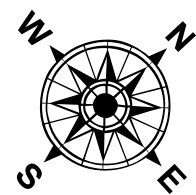


LEGEND

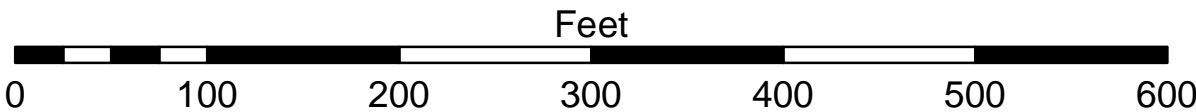
- Cable Submarine
- - - Cable Overhead
- Placement Area
- └ Beacon, General
- Contour Lines
- ▭ Channel_Limits

SOUNDING LEGEND

- LESS THAN PROJECT DEPTH
- PROJECT DEPTH
- PROJECT DEPTH +1'
- PROJECT DEPTH +2'
- PROJECT DEPTH +3'
- PROJECT DEPTH +4'
- PROJECT DEPTH +5'



1 inch = 100 feet



NOTES:

THE INFORMATION DEPICTED ON THIS MAP REPRESENTS THE RESULTS OF SURVEYS MADE ON THE DATES INDICATED AND CAN ONLY BE CONSIDERED AS INDICATING THE GENERAL CONDITIONS AT THE TIME.

FOR MULTIBEAM SURVEYS:
THE SOUNDINGS INDICATED HEREIN ARE GENERALIZED DEPTHS AND ARE NOT REPRESENTATIVE OF THE FULL DATASET. THE SOUNDINGS REPRESENT THE MINIMUM DEPTH FOUND WITHIN THE 10X10 FOOT AREA CENTERED ON THE TEXT. DERIVED FROM A 1X1 FOOT AVERAGE DATASET AT CELL CENTER. THIS MAP SHOULD NOT BE USED FOR CHANNEL CLEARANCE OR VOLUME COMPUTATIONS. MINIMUM DEPTH DATA IS PRODUCED FOR STRIKE/SOAL REMOVAL OPERATIONS AND NOTICE TO NAVIGATION INTERESTS.

HORIZONTAL GRID DATUM BASED ON MICHIGAN STATE PLANE COORDINATE SYSTEM, LAMBERT PROJECTION, SOUTH ZONE (2113), NORTH AMERICAN DATUM 1983, U.S. SURVEY FOOT.

ALL SOUNDINGS ARE REFERENCED TO INTERNATIONAL GREAT LAKES DATUM OF 1985 (IGLD85).

TIDE VALUES ARE DERIVED FROM THE NATIONAL OCEANIC AND ATMOSPHERIC ADMINISTRATION (NOAA) WATER LEVEL STATIONS.

ST CLAIR SHORES, MI (#9034052)

POSITIONING:APPLANIX POS-MV4 W/ VRS/RTK OR MARINESTAR GNSS.
MOTION COMPENSATION: APPLANIX POS-MV4
SONAR: ROSINOC 2024 (MULTIBEAM) OR ODOM CV-300 (SINGLEBEAM)
SOFTWARE: HYPACK

2010 AERIAL PHOTOGRAPHY DATA SOURCE: USGS
ALL COORDINATES ARE IN U.S. SURVEY FEET.

Channels in Lake St. Clair, MI
Channels of Lake St Clair
CL_01_LSC_20220823_CS
23 August 2022

Sheet
Reference
Number
28 of 30

Revision Number:
4.2-2020MAY20

**US Army Corps
of Engineers**
District: CELRE

DISCLAIMER: The data represents the results of data collection operations for a specific US Army Corps of Engineers activity and indicates the general existing conditions. The user is responsible for the results of any of the application of the data for other than its intended purpose.

DISCLAIMER: The United States Government furnishes these data and the recipient accepts and uses them with the express understanding that the United States Government makes no warranty, expressed or implied concerning the accuracy, completeness, reliability, usability or suitability for any particular purpose of the data. The recipient agrees to hold the United States Government harmless under no liability whatsoever to any person by reason of any use made thereof. These data belong to the Government. Therefore the recipient may not transfer, reproduce, or otherwise use these data for other than the intended purpose.

U.S. ARMY CORPS OF ENGINEERS DETROIT DISTRICT		
Submitted:	Surveyed By:	
Recommended: Chief, Survey Section	Plotted By:	
Approved: Chief, Technical Services	Checked By:	

