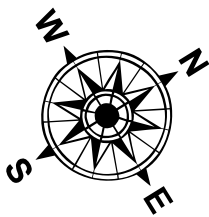
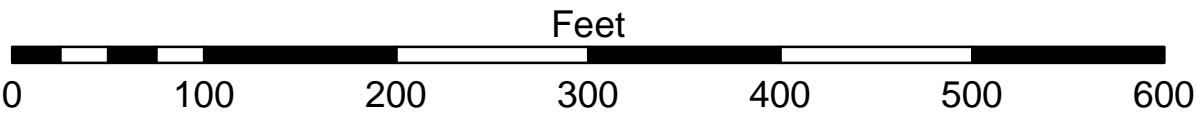


- LEGEND**
- ..... Cable Submarine
  - - - Cable Overhead
  - ⊥ Beacon, General
  - ▭ Channel Limits
  - Contour Lines

- SOUNDING LEGEND**
- LESS THAN PROJECT DEPTH
  - PROJECT DEPTH
  - PROJECT DEPTH +1'
  - PROJECT DEPTH +2'
  - PROJECT DEPTH +3'
  - PROJECT DEPTH +4'
  - PROJECT DEPTH +5'



1 inch = 100 feet



- NOTES:**
- 1) THE SOUNDINGS AND ASSOCIATED INFORMATION REPRESENTED HEREIN ARE THE RESULT OF SURVEYS MADE ON THE DATE AS INDICATED AND CAN ONLY BE CONSIDERED REPRESENTATIVE OF THE GENERAL CONDITIONS EXISTING AT THE TIME OF SURVEY.
  - 2) THE SOUNDINGS DEPICTED HEREIN ARE EXPRESSED IN U.S. SURVEY FEET AND TENTHS THEREOF AND ARE REFERENCED TO THE FOLLOWING DATUMS:  
HORIZONTAL: MICHIGAN STATE PLANE COORDINATE SYSTEM,  
MICHIGAN CENTRAL ZONE #2112, NORTH AMERICAN DATUM (NAD) OF 1983.  
VERTICAL: INTERNATIONAL GREAT LAKES DATUM (IGLD) OF 1985.
  - 3) THE ABOVE SURVEY WAS CONDUCTED USING THE U.S.A.C.E. SURVEY VESSEL LAUNCH 3053 EMPLOYING THE FOLLOWING COMPONENTS:  
POSITIONING: APPLANIX POS-MV4 WIMARINESTAR GPS CORRECTIONS.  
MOTION COMPENSATION: APPLANIX POS-MV4  
SONAR: ODOM CV-300 (SINGLEBEAM TRANSDUCER)  
SOFTWARE: HYPACK 2018
  - 4) WATER LEVEL ELEVATIONS WERE OBTAINED FROM TBM STEEL CORNER WHICH WAS ESTABLISHED FROM NGS VERTICAL CONTROL POINT BM RANGE (PID QK0021).
  - 5) THE EDITED SINGLEBEAM DATA WAS SORTED INTO A 10 FT. DATA SET WITH THE RESULTING POINTS POSTED.

**CHEBOYGAN HARBOR, MI**  
**Cheboygan Harbor**  
**CH\_01\_BOY\_20230920\_CS**  
**20 September 2023**

**Sheet**  
**Reference**  
**Number**  
**1 of 6**

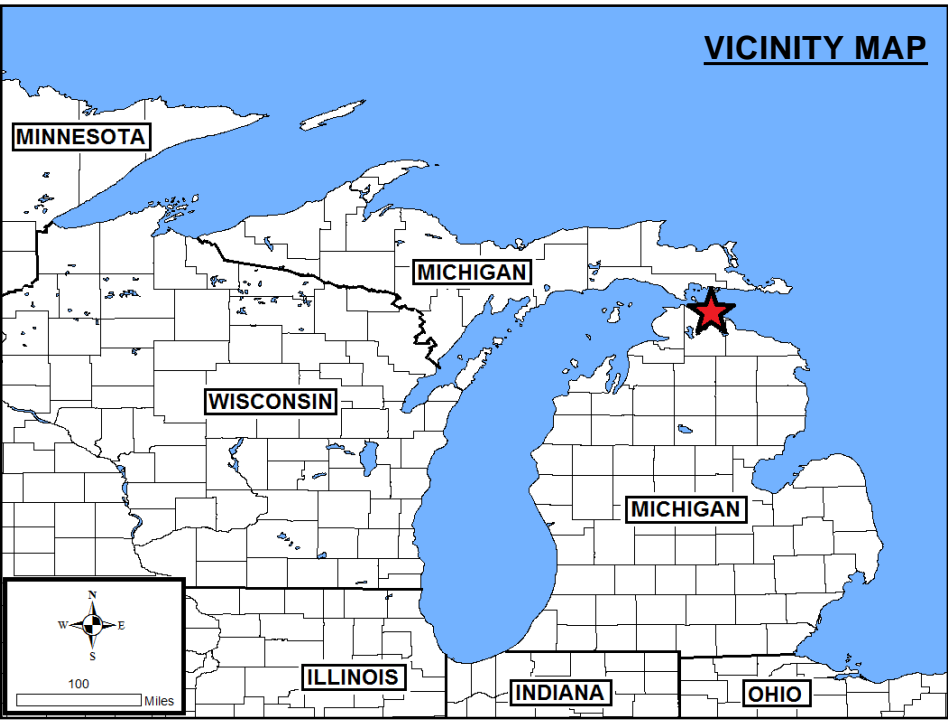
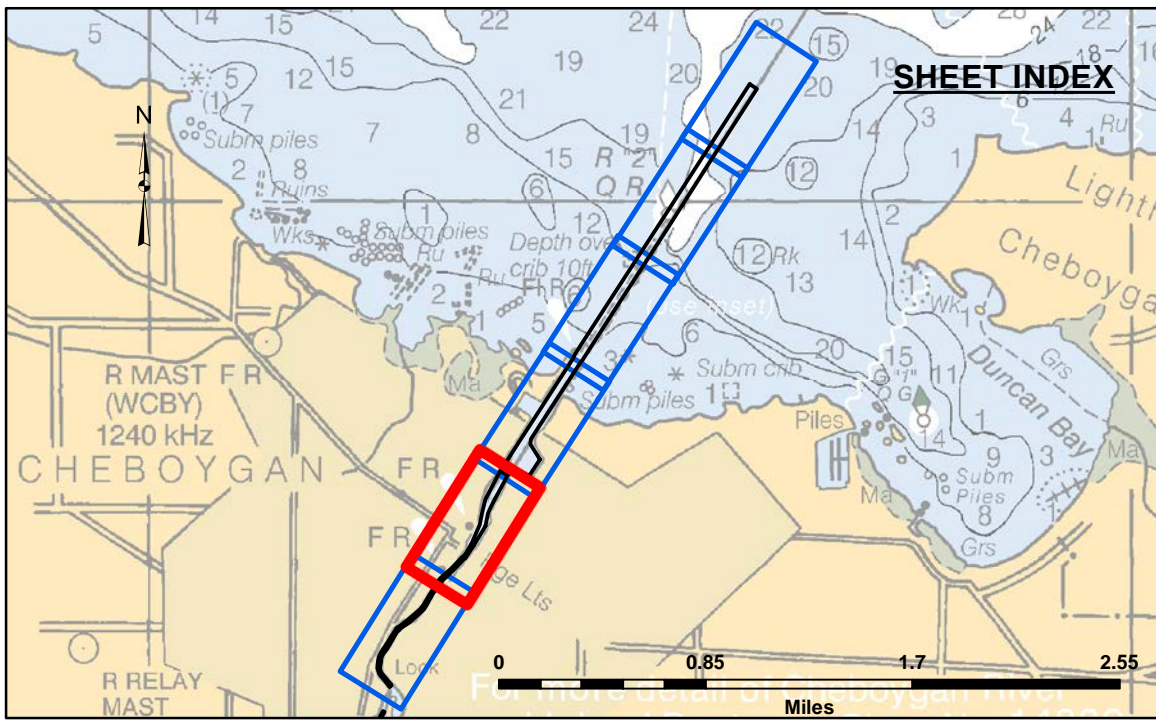
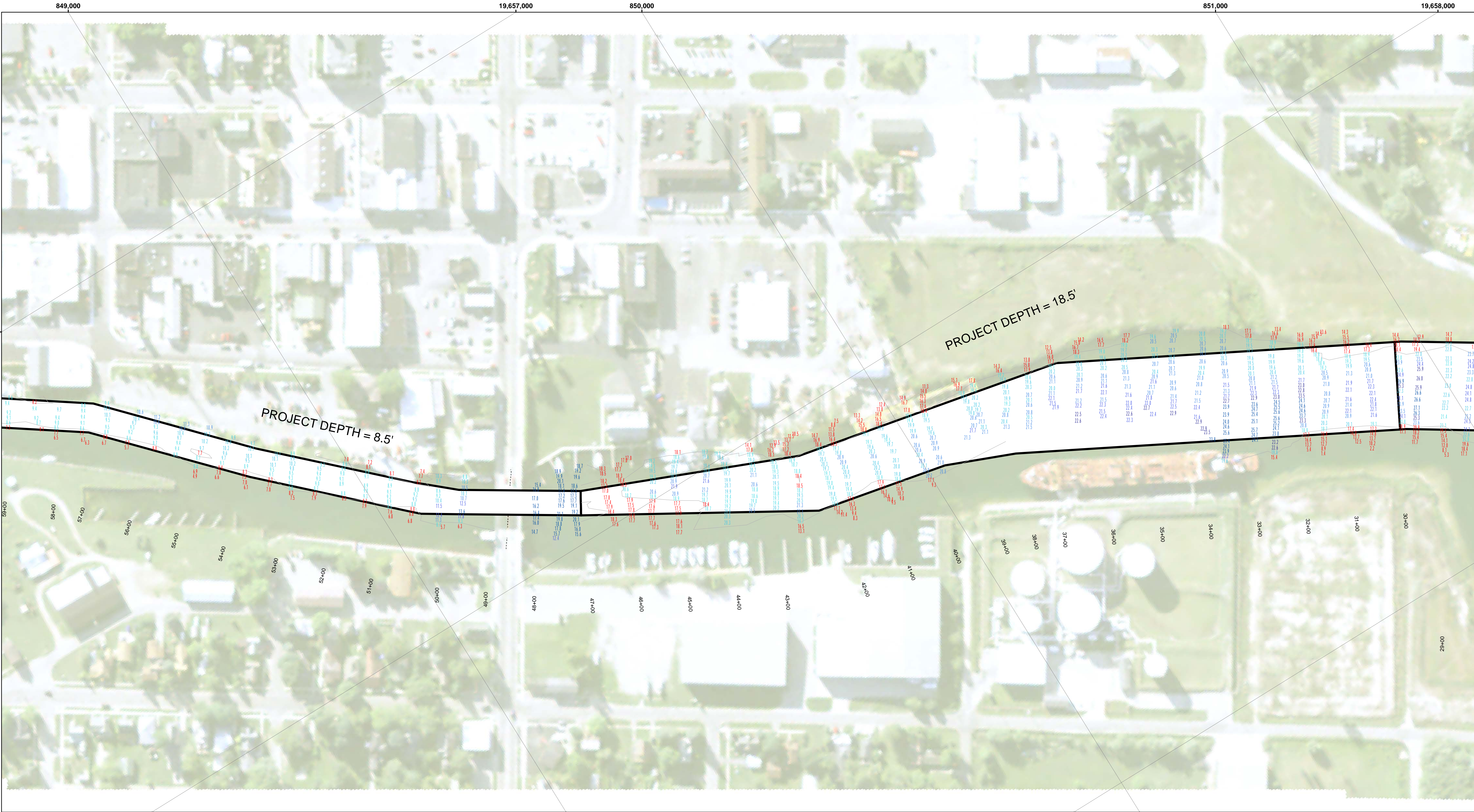
Revision Number:  
4.2-20230920

U.S. ARMY CORPS OF ENGINEERS DETROIT DISTRICT			
Submitted:	Surveyed By:	Plotted By:	Checked By:
Recommended:	Chief, Survey Section		
Approved:	Chief, Technical Services		

**DISCLAIMER:** The data presented in this map is the property of the U.S. Army Corps of Engineers and is provided for informational purposes only. The data is not to be used for any purpose other than that for which it was collected. The user is responsible for the results of any application of the data for other than its intended purpose. The U.S. Army Corps of Engineers does not warrant the accuracy, completeness, or reliability of the data for any particular purpose of the user. The user is responsible for the results of any application of the data for other than its intended purpose. The U.S. Army Corps of Engineers does not warrant the accuracy, completeness, or reliability of the data for any particular purpose of the user. The user is responsible for the results of any application of the data for other than its intended purpose.







**LEGEND**

- ..... Cable Submarine
- - Cable Overhead
- ⊥ Beacon, General
- ▭ Channel Limits
- Contour Lines

**SOUNDING LEGEND**

- LESS THAN PROJECT DEPTH
- PROJECT DEPTH
- PROJECT DEPTH +1'
- PROJECT DEPTH +2'
- PROJECT DEPTH +3'
- PROJECT DEPTH +4'
- PROJECT DEPTH +5'

1 inch = 100 feet

Feet

0 100 200 300 400 500 600

**NOTES:**

1) THE SOUNDINGS AND ASSOCIATED INFORMATION REPRESENTED HEREIN ARE THE RESULT OF SURVEYS MADE ON THE DATE AS INDICATED AND CAN ONLY BE CONSIDERED REPRESENTATIVE OF THE GENERAL CONDITIONS EXISTING AT THE TIME OF SURVEY.

2) THE SOUNDINGS DEPICTED HEREIN ARE EXPRESSED IN U.S. SURVEY FEET AND TENTHS THEREOF AND ARE REFERENCED TO THE FOLLOWING DATUMS: HORIZONTAL: MICHIGAN STATE PLANE COORDINATE SYSTEM, MICHIGAN CENTRAL ZONE #2112, NORTH AMERICAN DATUM (NAD) OF 1983. VERTICAL: INTERNATIONAL GREAT LAKES DATUM (IGLD) OF 1985.

3) THE ABOVE SURVEY WAS CONDUCTED USING THE U.S.A.C.E. SURVEY VESSEL LAUNCH 3053 EMPLOYING THE FOLLOWING COMPONENTS: POSITIONING: APPLANIX POS-MV4 WIMARINESTAR GPS CORRECTIONS. MOTION COMPENSATION: APPLANIX POS-MV4. SONAR: ODOM CV-300 (SINGLEBEAM TRANSDUCER). SOFTWARE: HYPACK 2018.

4) WATER LEVEL ELEVATIONS WERE OBTAINED FROM TBM STEEL CORNER WHICH WAS ESTABLISHED FROM NGS VERTICAL CONTROL POINT BM RANGE (PID QK0021).

5) THE EDITED SINGLEBEAM DATA WAS SORTED INTO A 10 FT. DATA SET WITH THE RESULTING POINTS POSTED.

**CHEBOYGAN HARBOR, MI**  
Cheboygan Harbor  
CH\_01\_BOY\_20230920\_CS  
20 September 2023

**Sheet Reference Number**  
2 of 6

**U.S. ARMY CORPS OF ENGINEERS**  
DETROIT DISTRICT

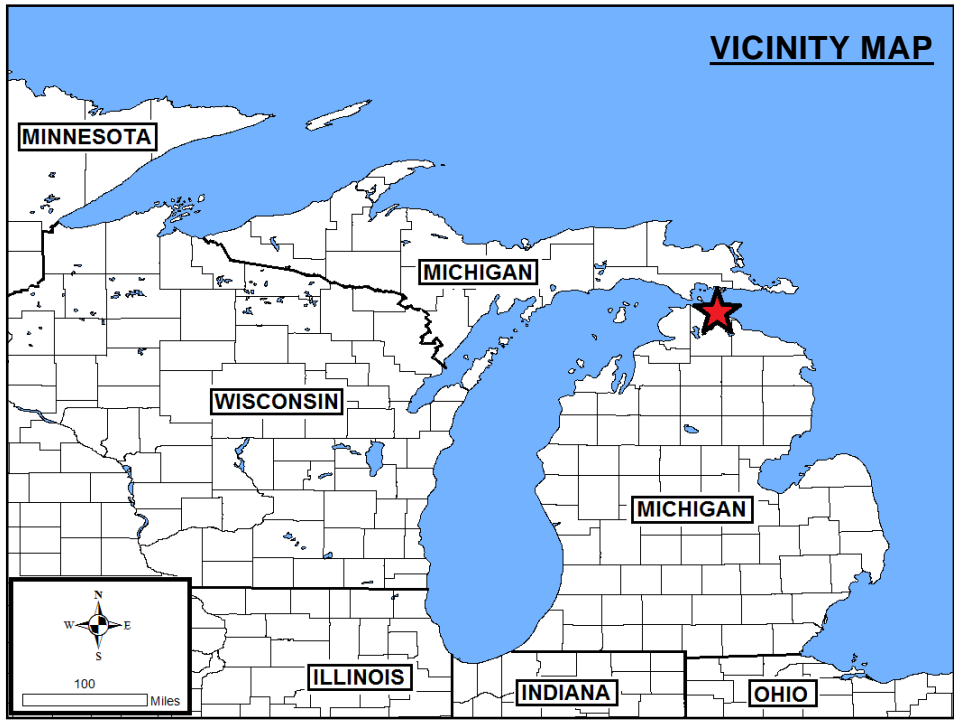
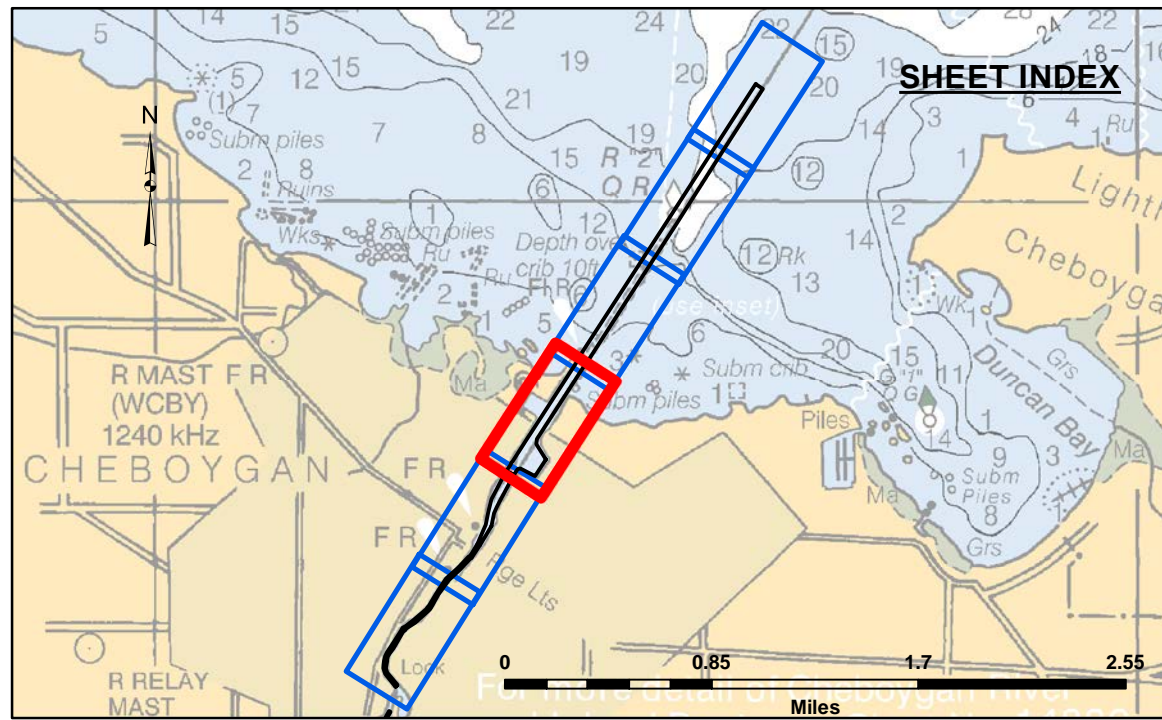
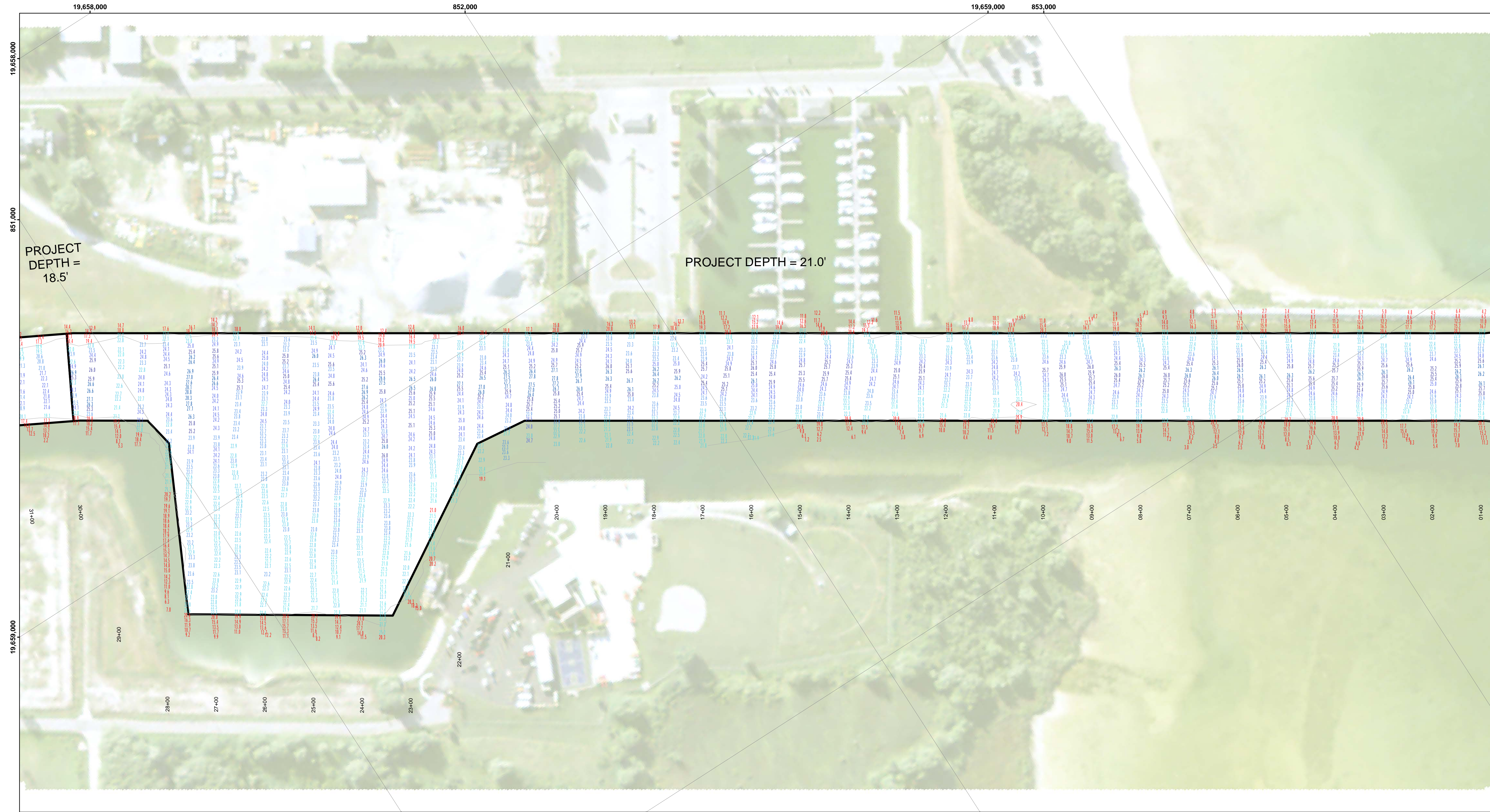
Submitted:	Surveyed By:
Recommended:	Plotted By:
Approved:	Checked By:

Chief, Survey Section  
Chief, Technical Services

**DISCLAIMER:** The data represented by the symbols of data collection are not intended to be used for any purpose other than the intended purpose. The user is responsible for the results of any application of the data for other than its intended purpose. The user is responsible for the results of any application of the data for other than its intended purpose. The user is responsible for the results of any application of the data for other than its intended purpose.

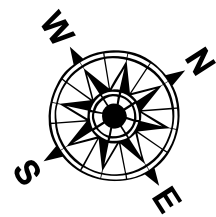




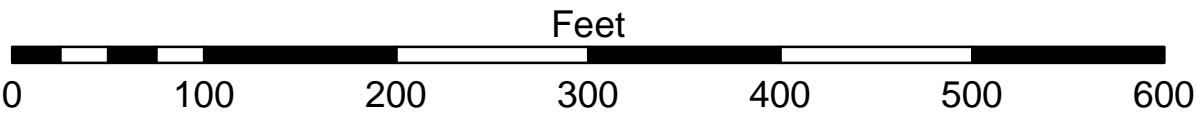


- LEGEND**
- ..... Cable Submarine
  - - - Cable Overhead
  - ⊥ Beacon, General
  - ▭ Channel Limits
  - Contour Lines

- SOUNDING LEGEND**
- LESS THAN PROJECT DEPTH
  - PROJECT DEPTH
  - PROJECT DEPTH +1'
  - PROJECT DEPTH +2'
  - PROJECT DEPTH +3'
  - PROJECT DEPTH +4'
  - PROJECT DEPTH +5'



1 inch = 100 feet



- NOTES:**
- 1) THE SOUNDINGS AND ASSOCIATED INFORMATION REPRESENTED HEREIN ARE THE RESULT OF SURVEYS MADE ON THE DATE AS INDICATED AND CAN ONLY BE CONSIDERED REPRESENTATIVE OF THE GENERAL CONDITIONS EXISTING AT THE TIME OF SURVEY.
  - 2) THE SOUNDINGS DEPICTED HEREIN ARE EXPRESSED IN U.S. SURVEY FEET AND TENTHS THEREOF AND ARE REFERENCED TO THE FOLLOWING DATUMS:  
HORIZONTAL: MICHIGAN STATE PLANE COORDINATE SYSTEM,  
MICHIGAN CENTRAL ZONE #2112, NORTH AMERICAN DATUM (NAD) OF 1983.  
VERTICAL: INTERNATIONAL GREAT LAKES DATUM (IGLD) OF 1985.
  - 3) THE ABOVE SURVEY WAS CONDUCTED USING THE U.S.A.C.E. SURVEY VESSEL LAUNCH 3053 EMPLOYING THE FOLLOWING COMPONENTS:  
POSITIONING: APPLANIX POS-MV4 WIMARINESTAR GPS CORRECTIONS.  
MOTION COMPENSATION: APPLANIX POS-MV4  
SONAR: ODOM CV-300 (SINGLEBEAM TRANSDUCER)  
SOFTWARE: HYPACK 2018
  - 4) WATER LEVEL ELEVATIONS WERE OBTAINED FROM TBM STEEL CORNER WHICH WAS ESTABLISHED FROM NGS VERTICAL CONTROL POINT BM RANGE (PID QK0021).
  - 5) THE EDITED SINGLEBEAM DATA WAS SORTED INTO A 10 FT. DATA SET WITH THE RESULTING POINTS POSTED.

**CHEBOYGAN HARBOR, MI**  
Cheboygan Harbor  
CH\_01\_BOY\_20230920\_CS  
20 September 2023

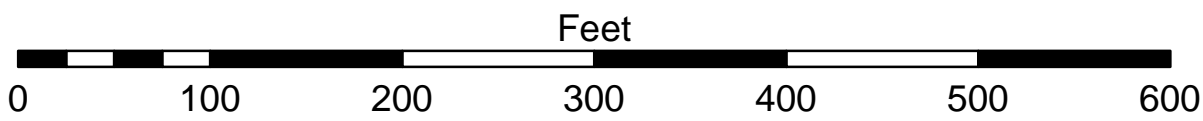
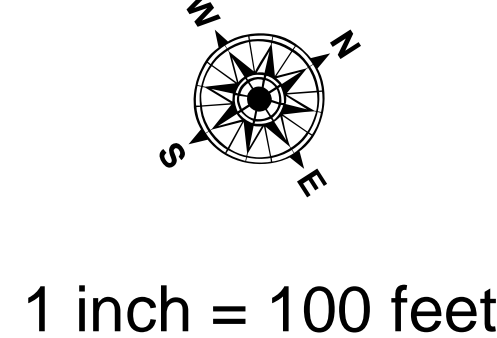
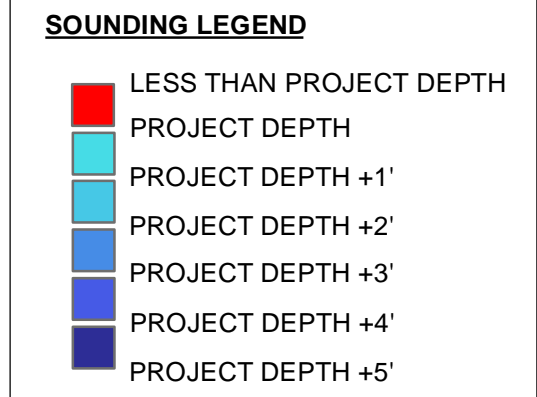
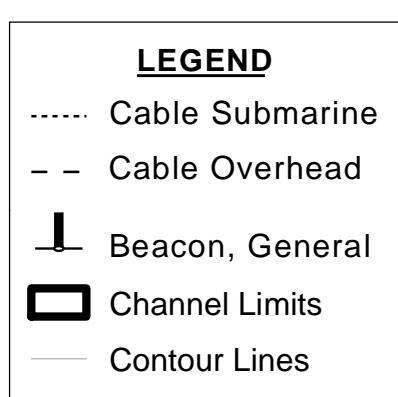
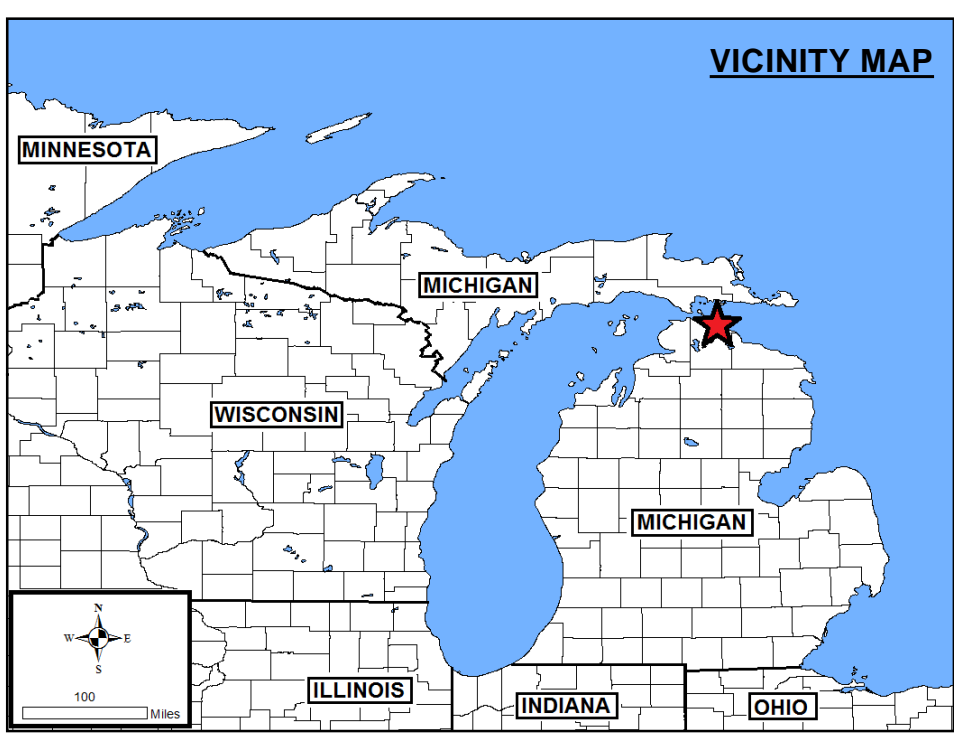
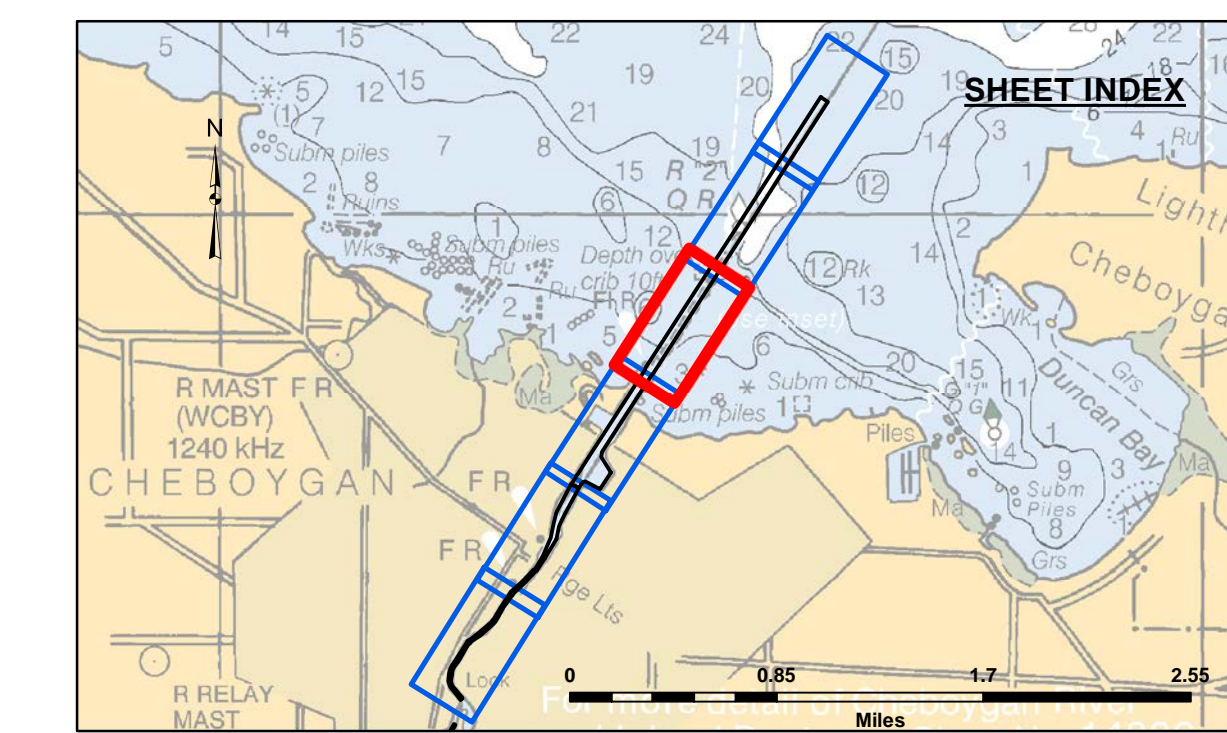
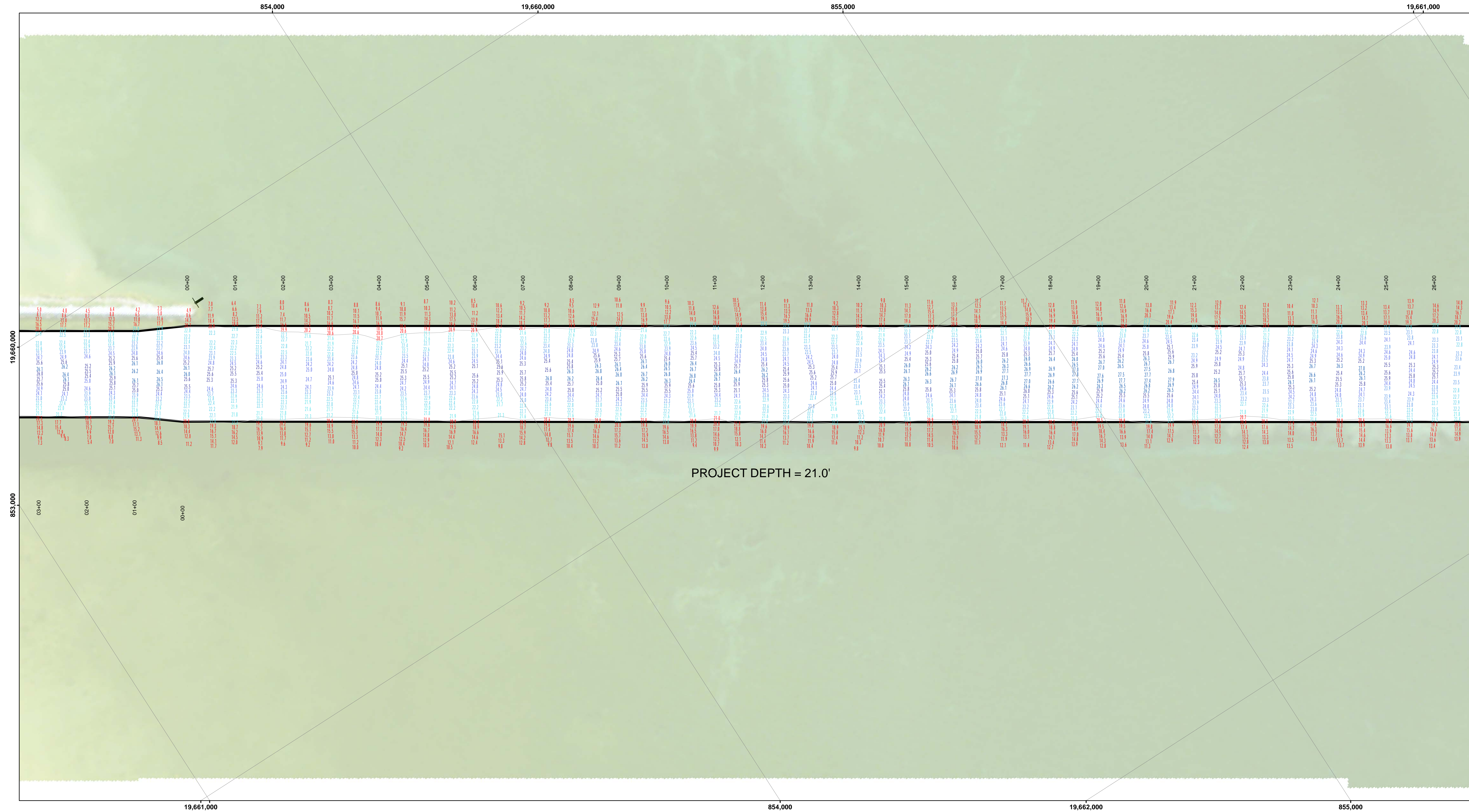
**Sheet Reference Number**  
3 of 6

U.S. ARMY CORPS OF ENGINEERS DETROIT DISTRICT		
Submitted:	Surveyed By:	
Recommended:	Plotted By:	
Chief, Survey Section		
Approved:	Chief, Technical Services	

**DISCLAIMER:** The data represented on this map of data collection was obtained from a specific US Army Corps of Engineers activity and indicates the general existing conditions. The user is responsible for the accuracy, completeness, and reliability of the data for other than its intended purpose. The user is responsible for the accuracy, completeness, and reliability of the data for other than its intended purpose. The user is responsible for the accuracy, completeness, and reliability of the data for other than its intended purpose. The user is responsible for the accuracy, completeness, and reliability of the data for other than its intended purpose.







**NOTES:**

1) THE SOUNDINGS AND ASSOCIATED INFORMATION REPRESENTED HEREIN ARE THE RESULT OF SURVEYS MADE ON THE DATE AS INDICATED AND CAN ONLY BE CONSIDERED REPRESENTATIVE OF THE GENERAL CONDITIONS EXISTING AT THE TIME OF SURVEY.

2) THE SOUNDINGS DEPICTED HEREIN ARE EXPRESSED IN U.S. SURVEY FEET AND TENTHS THEREOF AND ARE REFERENCED TO THE FOLLOWING DATUMS: HORIZONTAL: MICHIGAN STATE PLANE COORDINATE SYSTEM, MICHIGAN CENTRAL ZONE #2112, NORTH AMERICAN DATUM (NAD) OF 1983. VERTICAL: INTERNATIONAL GREAT LAKES DATUM (IGLD) OF 1985.

3) THE ABOVE SURVEY WAS CONDUCTED USING THE U.S.A.C.E. SURVEY VESSEL LAUNCH 3053 EMPLOYING THE FOLLOWING COMPONENTS: POSITIONING: APPLANIX POS-MV4 WIMARINESTAR GPS CORRECTIONS. MOTION COMPENSATION: APPLANIX POS-MV4. SONAR: ODOM CV-300 (SINGLEBEAM TRANSDUCER). SOFTWARE: HYPACK 2018

4) WATER LEVEL ELEVATIONS WERE OBTAINED FROM TBM STEEL CORNER WHICH WAS ESTABLISHED FROM NGS VERTICAL CONTROL POINT BM RANGE (PID QK0021).

5) THE EDITED SINGLEBEAM DATA WAS SORTED INTO A 10 FT. DATA SET WITH THE RESULTING POINTS POSTED.

**CHEBOYGAN HARBOR, MI**  
**Cheboygan Harbor**  
**CH\_01\_BOY\_20230920\_CS**  
**20 September 2023**

**Sheet Reference Number**  
**4 of 6**

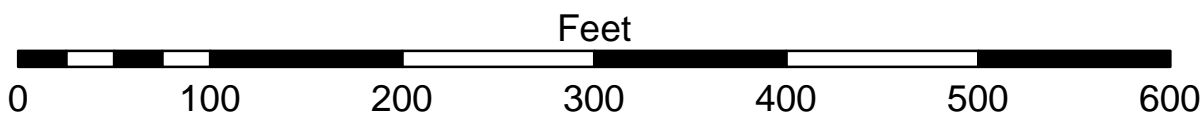
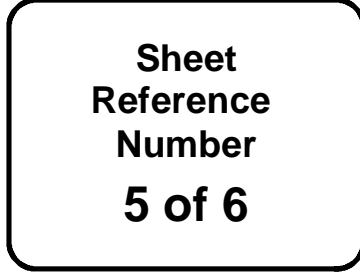
U.S. ARMY CORPS OF ENGINEERS DETROIT DISTRICT	
Submitted: _____	Surveyed By: _____
Recommended: _____	Plotted By: _____
Approved: _____	Checked By: _____
Chief, Survey Section	
Chief, Technical Services	

**DISCLAIMER:** The data represented in this chart is the property of the U.S. Army Corps of Engineers and is provided for informational purposes only. The user is responsible for the accuracy of the data and for the application of the data for other than its intended purpose. The user is responsible for the accuracy of the data and for the application of the data for other than its intended purpose.

**DISCLAIMER:** The United States Government furnishes this data and the recipient accepts and uses them with the express understanding that the data is provided for informational purposes only. The data is not to be used for any purpose other than that for which it was provided. The user is responsible for the accuracy of the data and for the application of the data for other than its intended purpose.



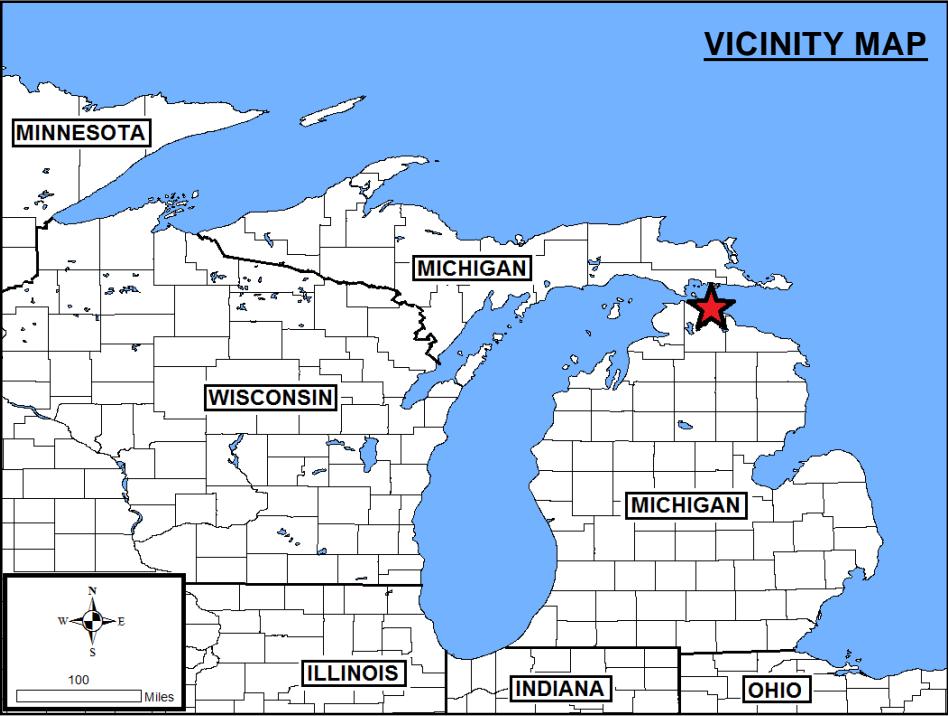
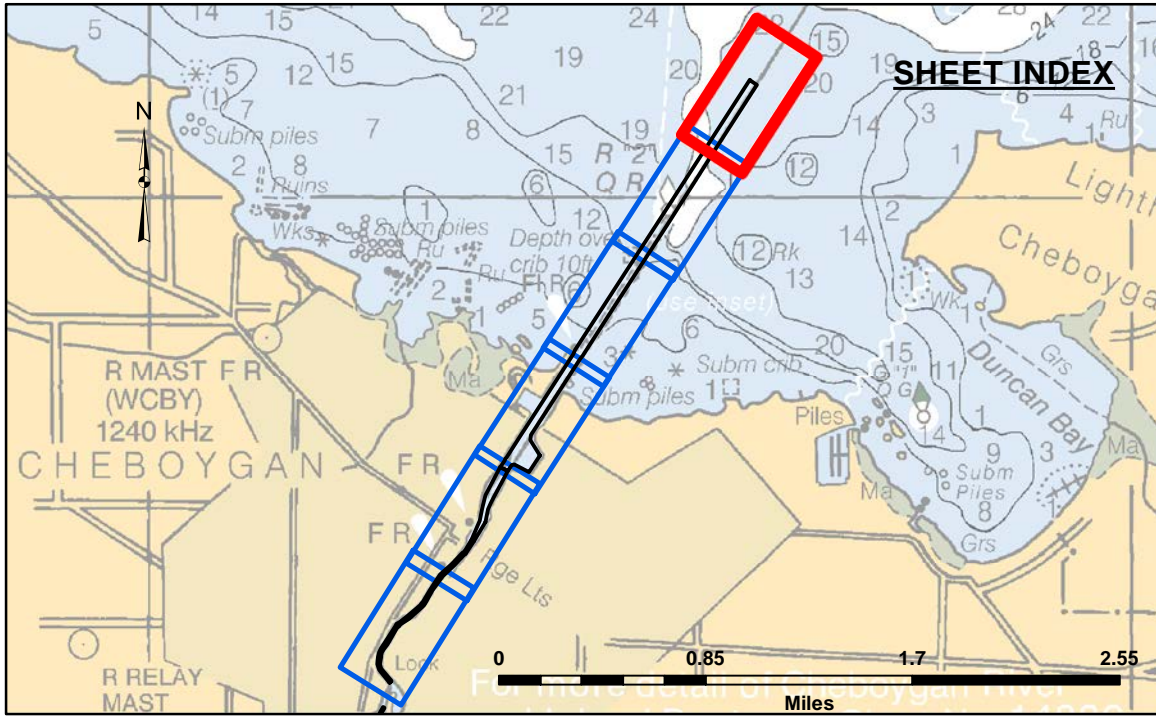
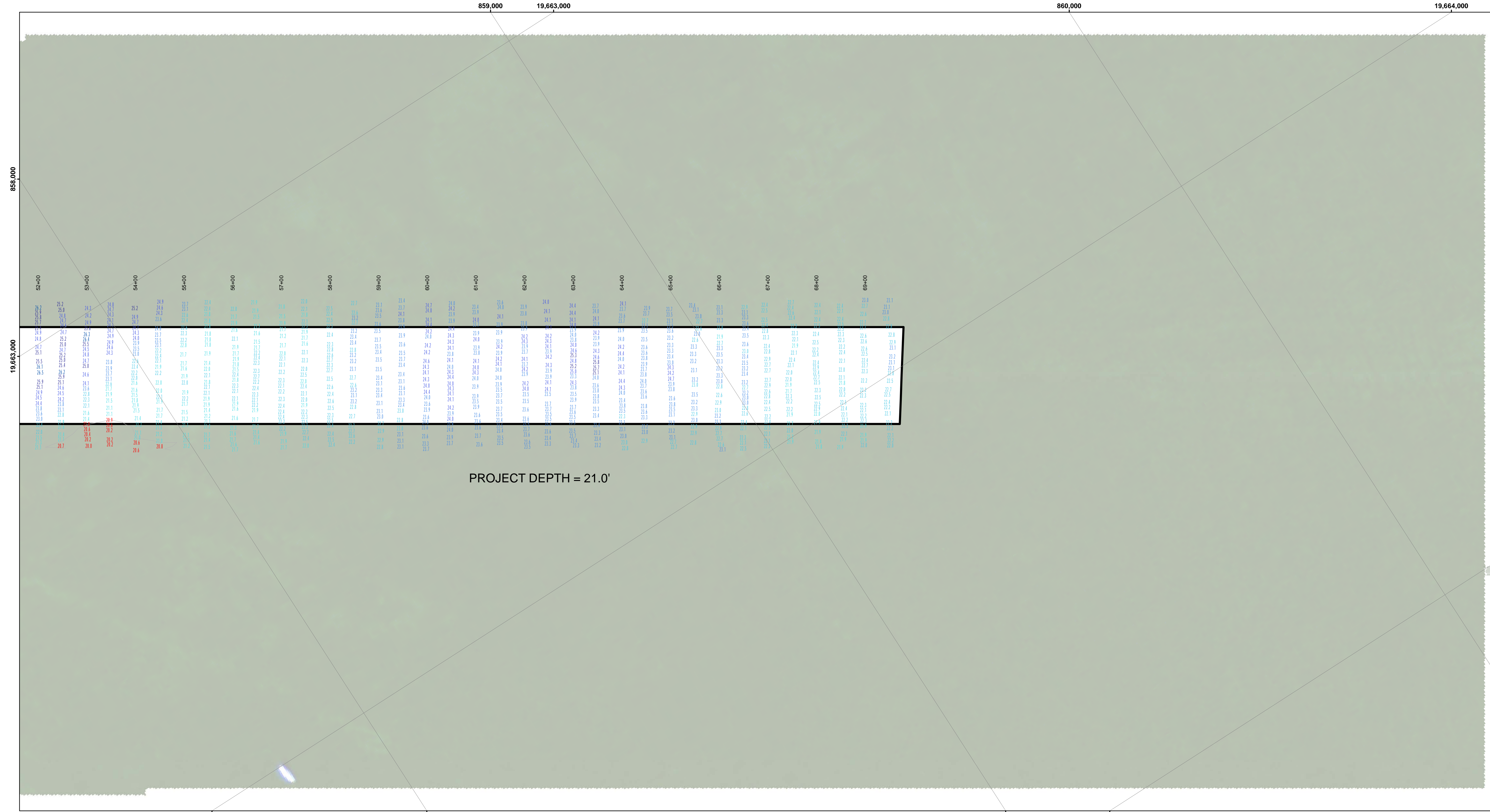




**NOTES:**

- 1) THE SOUNDINGS AND ASSOCIATED INFORMATION REPRESENTED HEREIN ARE THE RESULT OF SURVEYS MADE ON THE DATE AS INDICATED HEREIN AND CAN ONLY BE CONSIDERED REPRESENTATIVE OF THE GENERAL CONDITIONS EXISTING AT THE TIME OF SURVEY.
- 2) THE SOUNDINGS DEPICTED HEREIN ARE EXPRESSED IN U.S. SURVEY FEET AND TENTHS THEREOF AND ARE REFERENCED TO THE FOLLOWING DATUMS:  
HORIZONTAL: MICHIGAN STATE PLANE COORDINATE SYSTEM,  
MICHIGAN CENTRAL ZONE #2112, NORTH AMERICAN DATUM (NAD) OF 1983.  
VERTICAL: INTERNATIONAL GREAT LAKES DATUM (IGLD) OF 1985.
- 3) THE ABOVE SURVEY WAS CONDUCTED USING THE U.S.A.C.E. SURVEY VESSEL LAUNCH 3053 EMPLOYING THE FOLLOWING COMPONENTS:  
POSITIONING: APPLINK POS-MV4 W/MARINESTAR GPS CORRECTIONS.  
MOTION COMPENSATION: APPLINK POS-MV4  
SONAR: ODOM CV-300 (SINGLEBEAM TRANSDUCER)  
SOFTWARE: HYPAACK 2018
- 4) WATER LEVEL ELEVATIONS WERE OBTAINED FROM TBM STEEL CORNER WHICH WAS ESTABLISHED FROM NGS VERTICAL CONTROL POINT BM RANGE (PID QK0021).
- 5) THE EDITED SINGLEBEAM DATA WAS SORTED INTO A 10 FT. DATA SET WITH THE RESULTING POINTS POSTED.





**LEGEND**

- ..... Cable Submarine
- - Cable Overhead
- ⊥ Beacon, General
- ▭ Channel Limits
- Contour Lines

**SOUNDING LEGEND**

- LESS THAN PROJECT DEPTH
- PROJECT DEPTH
- PROJECT DEPTH +1'
- PROJECT DEPTH +2'
- PROJECT DEPTH +3'
- PROJECT DEPTH +4'
- PROJECT DEPTH +5'

1 inch = 100 feet

Feet

0 100 200 300 400 500 600

**NOTES:**

1) THE SOUNDINGS AND ASSOCIATED INFORMATION REPRESENTED HEREIN ARE THE RESULT OF SURVEYS MADE ON THE DATE AS INDICATED AND CAN ONLY BE CONSIDERED REPRESENTATIVE OF THE GENERAL CONDITIONS EXISTING AT THE TIME OF SURVEY.

2) THE SOUNDINGS DEPICTED HEREIN ARE EXPRESSED IN U.S. SURVEY FEET AND TENTHS THEREOF AND ARE REFERENCED TO THE FOLLOWING DATUMS: HORIZONTAL: MICHIGAN STATE PLANE COORDINATE SYSTEM, MICHIGAN CENTRAL ZONE #2112, NORTH AMERICAN DATUM (NAD) OF 1983. VERTICAL: INTERNATIONAL GREAT LAKES DATUM (IGLD) OF 1985.

3) THE ABOVE SURVEY WAS CONDUCTED USING THE U.S.A.C.E. SURVEY VESSEL LAUNCH 3053 EMPLOYING THE FOLLOWING COMPONENTS: POSITIONING: APPLANIX POS-MV4 WIMARINESTAR GPS CORRECTIONS. MOTION COMPENSATION: APPLANIX POS-MV4. SONAR: ODOM CV-300 (SINGLEBEAM TRANSDUCER). SOFTWARE: HYPACK 2018.

4) WATER LEVEL ELEVATIONS WERE OBTAINED FROM TBM STEEL CORNER WHICH WAS ESTABLISHED FROM NGS VERTICAL CONTROL POINT BM RANGE (PID QK0021).

5) THE EDITED SINGLEBEAM DATA WAS SORTED INTO A 10 FT. DATA SET WITH THE RESULTING POINTS POSTED.

**CHEBOYGAN HARBOR, MI**  
**Cheboygan Harbor**  
**CH\_01\_BOY\_20230920\_CS**  
**20 September 2023**

**Sheet Reference Number**  
**6 of 6**

U.S. ARMY CORPS OF ENGINEERS DETROIT DISTRICT	
Submitted: _____	Surveyed By: _____
Recommended: _____	Plotted By: _____
Approved: _____	Checked By: _____

**DISCLAIMER:** The data represented by the symbols of data collection is for informational purposes only and is not intended for use in any engineering or construction project. The user is responsible for the results of any application of the data for other than its intended purpose.

**DISCLAIMER:** The United States Government furnishes these data and the recipient accepts and uses them with the express understanding that the data are not to be used for any purpose other than that for which they were provided. The user is responsible for the results of any application of the data for other than its intended purpose.

