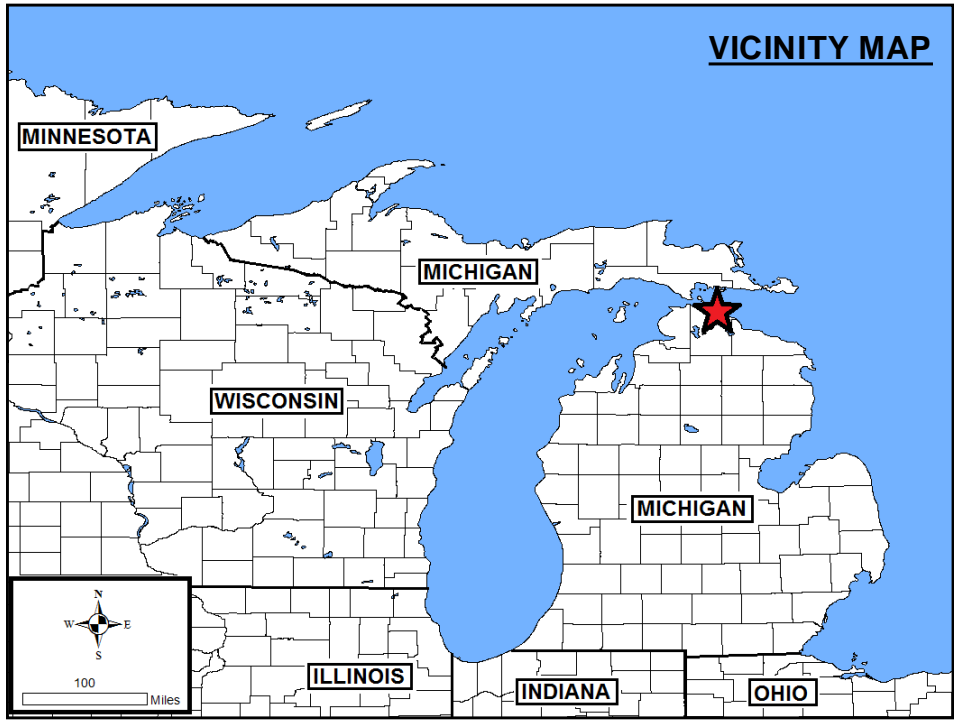
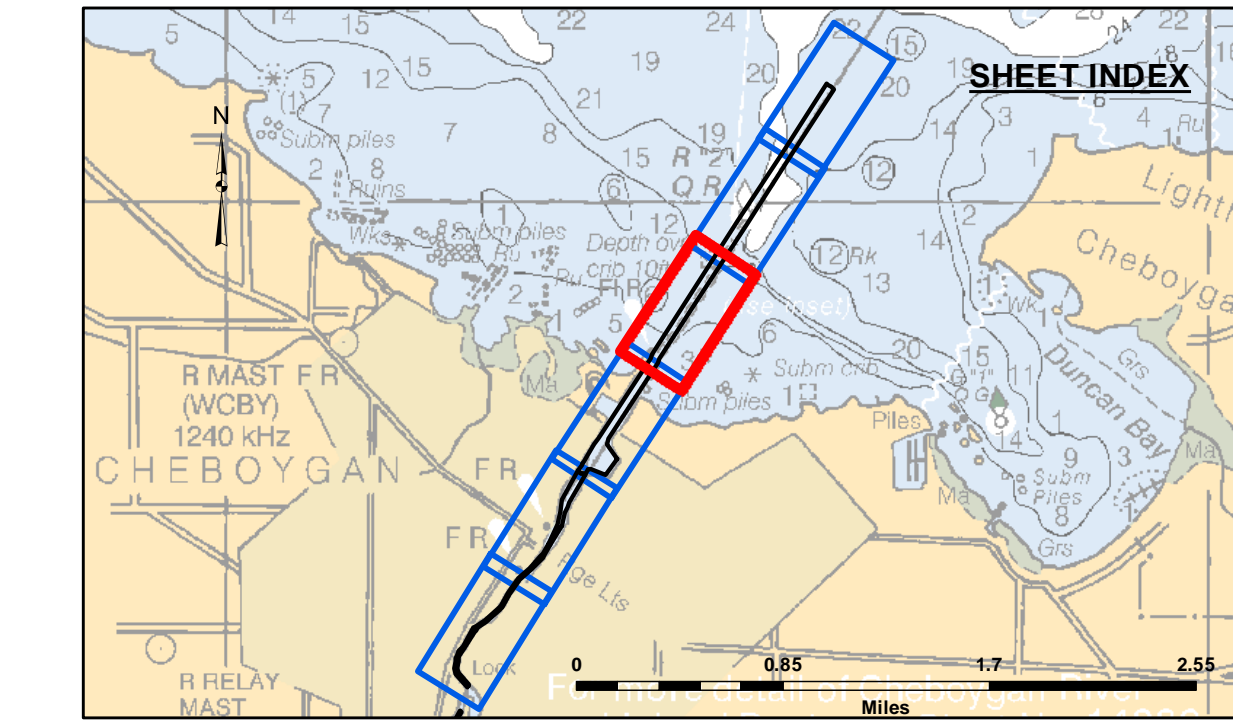
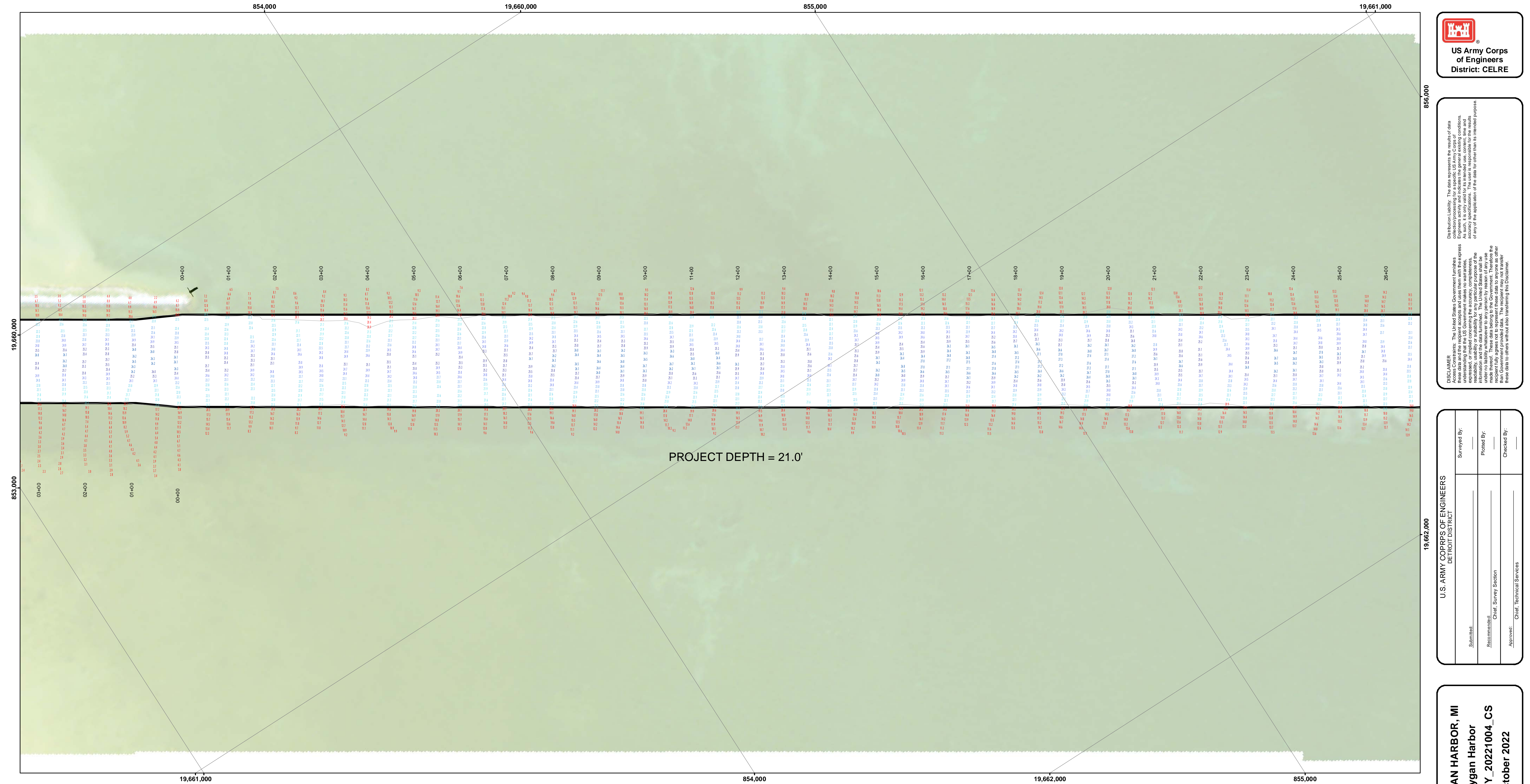


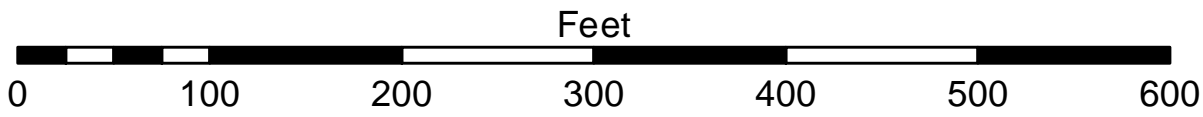
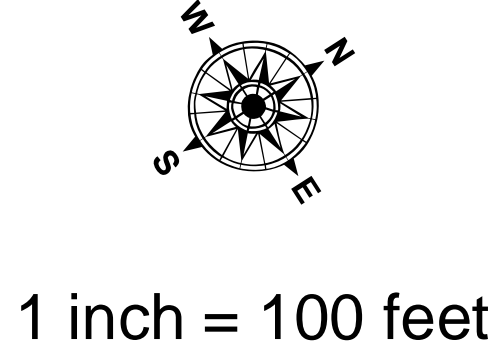
NOTES:

- 1) THE SOUNDINGS AND ASSOCIATED INFORMATION REPRESENTED HEREIN ARE THE RESULT OF SURVEYS MADE ON THE DATE AS INDICATED AND CAN ONLY BE CONSIDERED REPRESENTATIVE OF THE GENERAL CONDITIONS EXISTING AT THE TIME OF SURVEY.
- 2) THE SOUNDINGS DEPICTED HEREIN ARE EXPRESSED IN U.S. SURVEY FEET AND TENTHS THEREOF AND ARE REFERENCED TO THE FOLLOWING DATUMS:
HORIZONTAL: MICHIGAN STATE PLANE COORDINATE SYSTEM
MICHIGAN CENTRAL ZONE #2112, NORTH AMERICAN DATUM (NAD) OF 1983.
VERTICAL: INTERNATIONAL GREAT LAKES DATUM (GLD) OF 1985.
- 3) THE ABOVE SURVEY WAS CONDUCTED USING THE U.S.A.C.E. SURVEY VESSEL LAUNCH 3053 EMPLOYING THE FOLLOWING COMPONENTS:
POSITIONING: APPLINX POS-MV4 /WMARINESTAR GPS CORRECTIONS.
POSITION COMPENSATION: APPLINX POS-MV4 /WMARINESTAR GPS CORRECTIONS.
SONAR: ODOM CV-300 (SINGLEBEAM TRANSDUCER)
SOFTWARE: HYPAACK 2018
- 4) WATER LEVEL ELEVATIONS WERE OBTAINED FROM TBM STEEL CORNER WHICH WAS ESTABLISHED FROM NGS VERTICAL CONTROL POINT BM RANGE (PID QK0021).
- 5) THE EDITED SINGLEBEAM DATA WAS SORTED INTO A 10 FT. DATA SET WITH THE RESULTING POINTS POSTED.



- LEGEND**
- Cable Submarine
 - Cable Overhead
 - ⊥ Beacon, General
 - ▭ Channel Limits
 - Contour Lines

- SOUNDING LEGEND**
- LESS THAN PROJECT DEPTH
 - PROJECT DEPTH
 - PROJECT DEPTH +1'
 - PROJECT DEPTH +2'
 - PROJECT DEPTH +3'
 - PROJECT DEPTH +4'
 - PROJECT DEPTH +5'



- NOTES:**
- 1) THE SOUNDINGS AND ASSOCIATED INFORMATION REPRESENTED HEREIN ARE THE RESULT OF SURVEYS MADE ON THE DATE AS INDICATED AND CAN ONLY BE CONSIDERED REPRESENTATIVE OF THE GENERAL CONDITIONS EXISTING AT THE TIME OF SURVEY.
 - 2) THE SOUNDINGS DEPICTED HEREIN ARE EXPRESSED IN U.S. SURVEY FEET AND TENTHS THEREOF AND ARE REFERENCED TO THE FOLLOWING DATUMS:
HORIZONTAL: MICHIGAN STATE PLANE COORDINATE SYSTEM,
MICHIGAN CENTRAL ZONE #2112, NORTH AMERICAN DATUM (NAD) OF 1983.
VERTICAL: INTERNATIONAL GREAT LAKES DATUM (IGLD) OF 1985.
 - 3) THE ABOVE SURVEY WAS CONDUCTED USING THE U.S.A.C.E. SURVEY VESSEL LAUNCH 3053 EMPLOYING THE FOLLOWING COMPONENTS:
POSITIONING: APPLINX POS-MV4 WIMARINESTAR GPS CORRECTIONS.
MOTION COMPENSATION: APPLINX POS-MV4
SONAR: ODOM CV-300 (SINGLEBEAM TRANSDUCER)
SOFTWARE: HYPACK 2018
 - 4) WATER LEVEL ELEVATIONS WERE OBTAINED FROM TBM STEEL CORNER WHICH WAS ESTABLISHED FROM NGS VERTICAL CONTROL POINT BM RANGE (PID QK0021).
 - 5) THE EDITED SINGLEBEAM DATA WAS SORTED INTO A 10 FT. DATA SET WITH THE RESULTING POINTS POSTED.

CHEBOYGAN HARBOR, MI
Cheboygan Harbor
CH_01_BOY_20221004_CS
04 October 2022

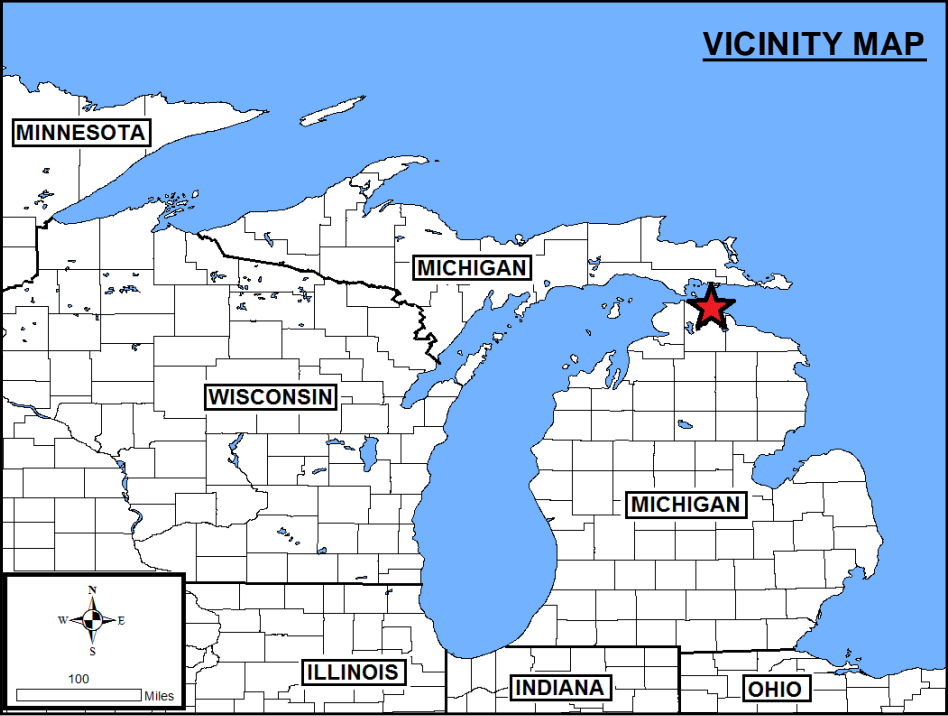
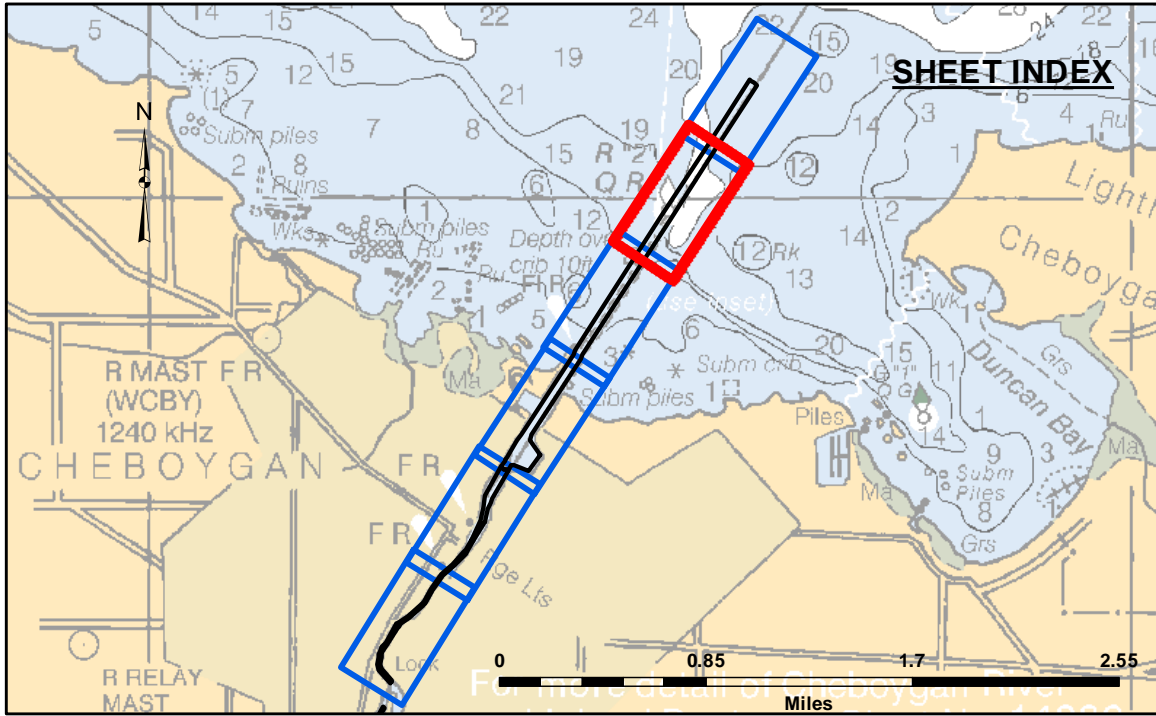
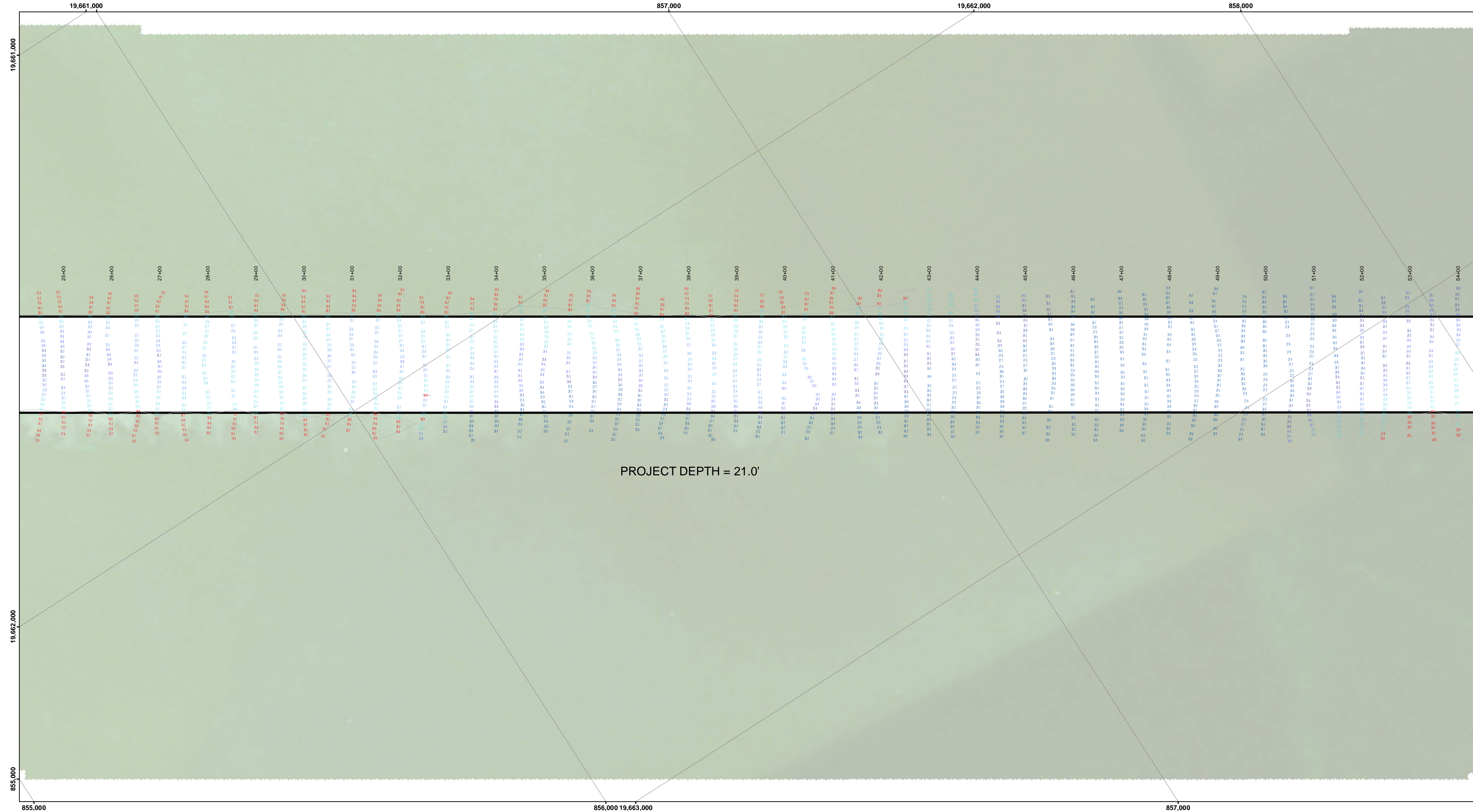
Sheet
Reference
Number
4 of 6

U.S. ARMY CORPS OF ENGINEERS DETROIT DISTRICT	Submitted:	Surveyed By:
	Recommended:	Plotted By:
	Chief, Survey Section	
	Approved:	Checked By:
Chief, Technical Services		

DISCLAIMER: The United States Government furnishes these data and the recipient accepts and uses them with the express understanding that the United States Government makes no warranty, expressed or implied concerning the accuracy, completeness, reliability, utility or suitability for any particular purpose of the data. The recipient shall be responsible for the accuracy, completeness, reliability, utility or suitability of the data for other than its intended purpose. The data are not to be used for any purpose other than that for which they were provided. The recipient may not transfer these data to others without the written consent of the United States Government.

DISCLAIMER: The data are not to be used for any purpose other than that for which they were provided. The recipient may not transfer these data to others without the written consent of the United States Government.



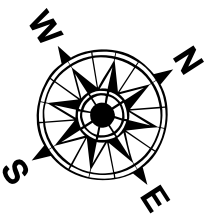


LEGEND

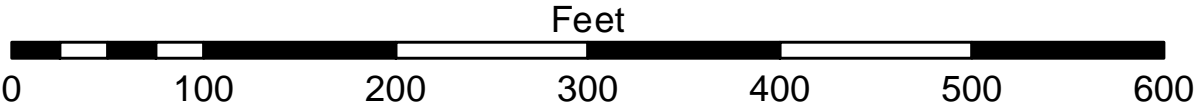
- Cable Submarine
- - - Cable Overhead
- ⊥ Beacon, General
- ▭ Channel Limits
- Contour Lines

SOUNDING LEGEND

- LESS THAN PROJECT DEPTH
- PROJECT DEPTH
- PROJECT DEPTH +1'
- PROJECT DEPTH +2'
- PROJECT DEPTH +3'
- PROJECT DEPTH +4'
- PROJECT DEPTH +5'



1 inch = 100 feet



- NOTES:**
- 1) THE SOUNDINGS AND ASSOCIATED INFORMATION REPRESENTED HEREIN ARE THE RESULT OF SURVEYS MADE ON THE DATE AS INDICATED AND CAN ONLY BE CONSIDERED REPRESENTATIVE OF THE GENERAL CONDITIONS EXISTING AT THE TIME OF SURVEY.
 - 2) THE SOUNDINGS DEPICTED HEREIN ARE EXPRESSED IN U.S. SURVEY FEET AND TENTHS THEREOF AND ARE REFERENCED TO THE FOLLOWING DATUMS:
HORIZONTAL: MICHIGAN STATE PLANE COORDINATE SYSTEM,
MICHIGAN CENTRAL ZONE #2112, NORTH AMERICAN DATUM (NAD) OF 1983.
VERTICAL: INTERNATIONAL GREAT LAKES DATUM (IGLD) OF 1985.
 - 3) THE ABOVE SURVEY WAS CONDUCTED USING THE U.S.A.C.E. SURVEY VESSEL LAUNCH 3053 EMPLOYING THE FOLLOWING COMPONENTS:
POSITIONING: APPLINX POS-MV4 WIMARINESTAR GPS CORRECTIONS.
MOTION COMPENSATION: APPLINX POS-MV4
SONAR: ODOM CV-300 (SINGLEBEAM TRANSDUCER)
SOFTWARE: HYPACK 2018
 - 4) WATER LEVEL ELEVATIONS WERE OBTAINED FROM TBM STEEL CORNER WHICH WAS ESTABLISHED FROM NGS VERTICAL CONTROL POINT BM RANGE (PID QK0021).
 - 5) THE EDITED SINGLEBEAM DATA WAS SORTED INTO A 10 FT. DATA SET WITH THE RESULTING POINTS POSTED.

U.S. ARMY CORPS OF ENGINEERS
DETROIT DISTRICT

Submitted: _____

Reviewed By: _____

Recommended: _____

Chief, Survey Section

Plotted By: _____

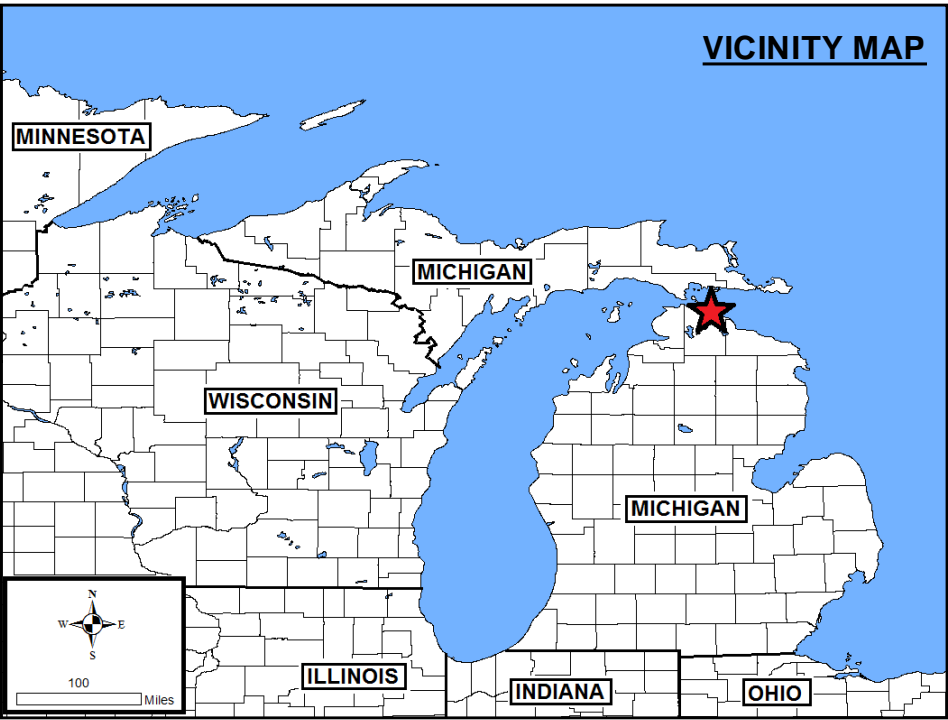
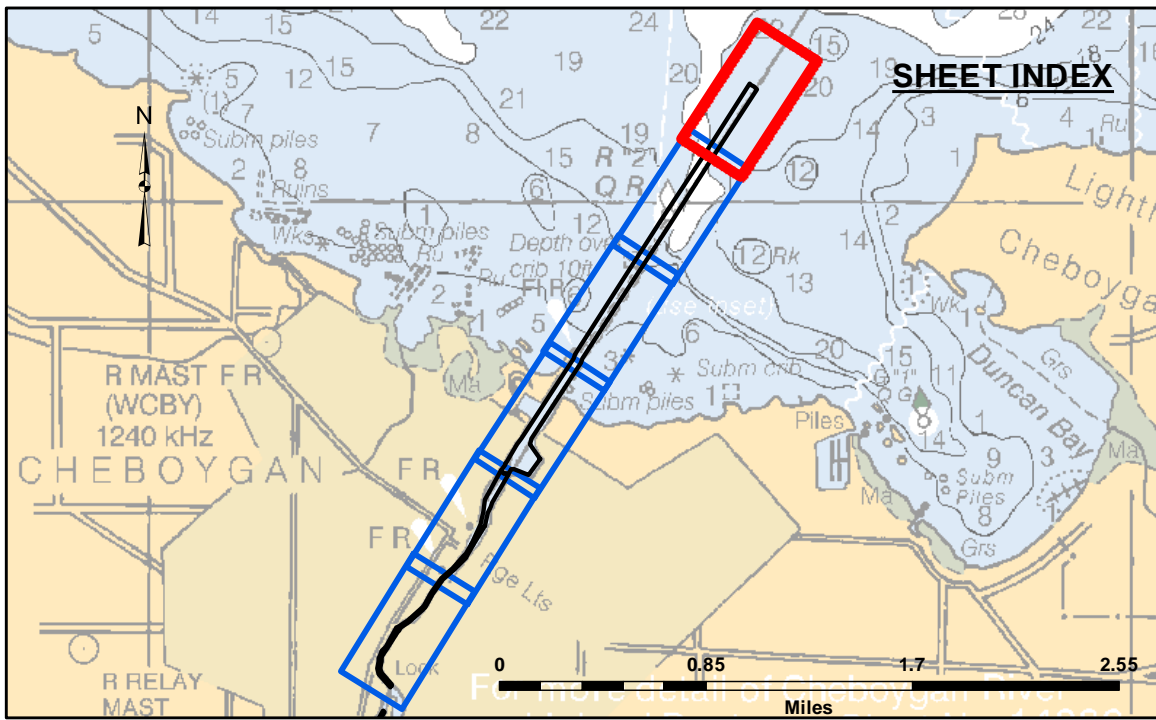
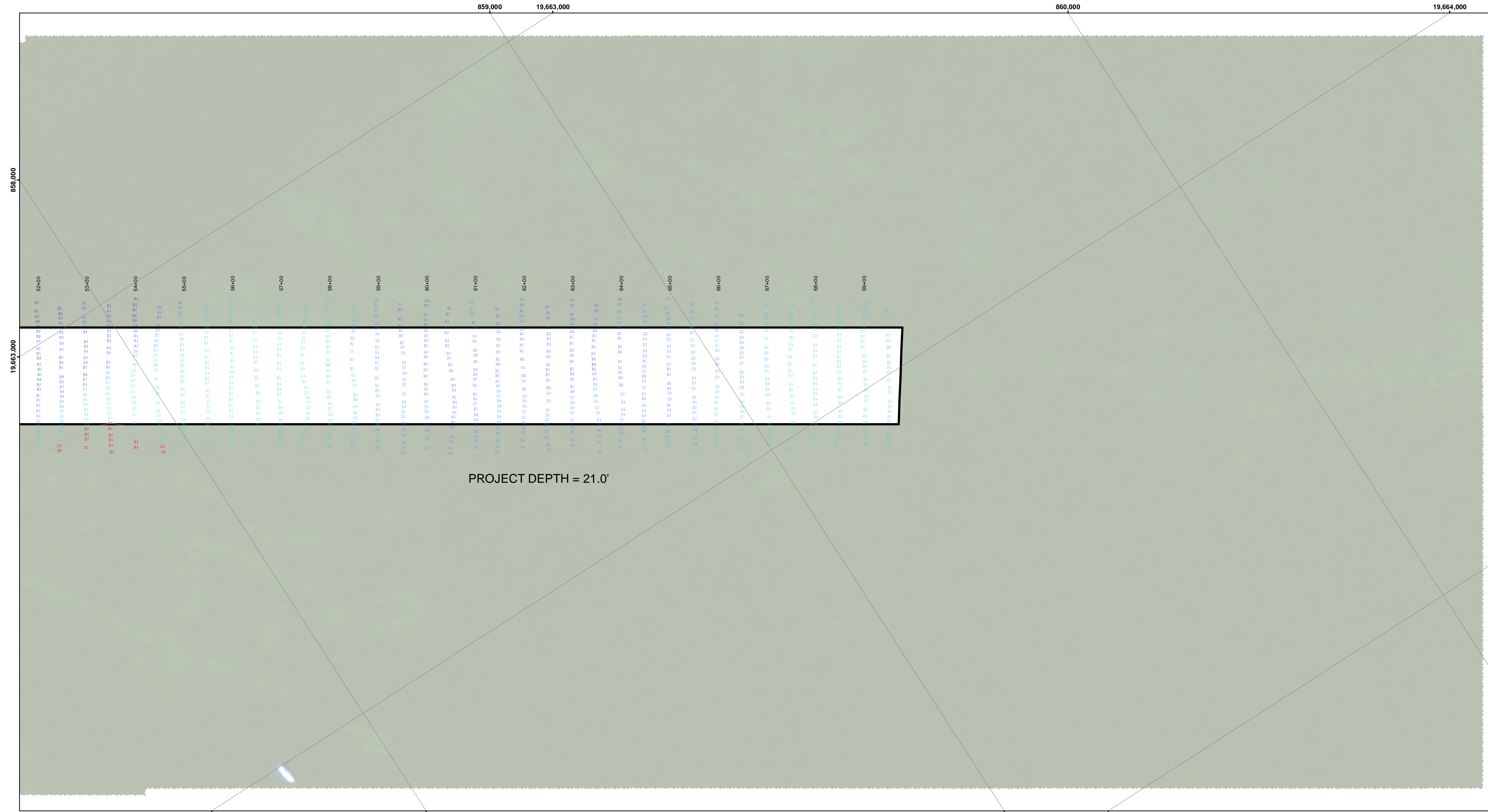
Checked By: _____

Approved: _____

Chief, Technical Services

CHEBOYGAN HARBOR, MI
Cheboygan Harbor
CH_01_BOY_20221004_CS
04 October 2022

Sheet Reference Number
5 of 6

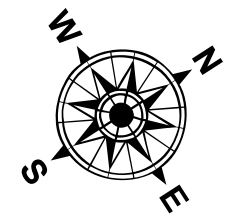


LEGEND

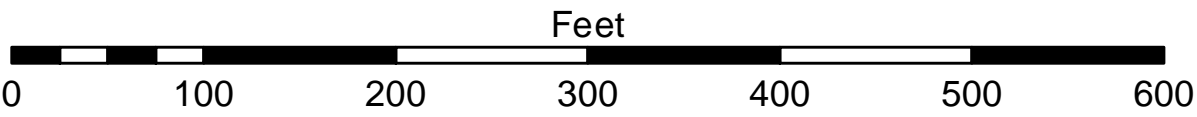
- Cable Submarine
- - - Cable Overhead
- ⊥ Beacon, General
- ▭ Channel Limits
- Contour Lines

SOUNDING LEGEND

- LESS THAN PROJECT DEPTH
- PROJECT DEPTH
- PROJECT DEPTH +1'
- PROJECT DEPTH +2'
- PROJECT DEPTH +3'
- PROJECT DEPTH +4'
- PROJECT DEPTH +5'



1 inch = 100 feet



- NOTES:**
- 1) THE SOUNDINGS AND ASSOCIATED INFORMATION REPRESENTED HEREIN ARE THE RESULT OF SURVEYS MADE ON THE DATE AS INDICATED AND CAN ONLY BE CONSIDERED REPRESENTATIVE OF THE GENERAL CONDITIONS EXISTING AT THE TIME OF SURVEY.
 - 2) THE SOUNDINGS DEPICTED HEREIN ARE EXPRESSED IN U.S. SURVEY FEET AND TENTHS THEREOF AND ARE REFERENCED TO THE FOLLOWING DATUMS:
HORIZONTAL: MICHIGAN STATE PLANE COORDINATE SYSTEM,
MICHIGAN CENTRAL ZONE #2112, NORTH AMERICAN DATUM (NAD) OF 1983.
VERTICAL: INTERNATIONAL GREAT LAKES DATUM (IGLD) OF 1985.
 - 3) THE ABOVE SURVEY WAS CONDUCTED USING THE U.S.A.C.E. SURVEY VESSEL LAUNCH 3053 EMPLOYING THE FOLLOWING COMPONENTS:
POSITIONING: APPLANIX POS-MV4 WIMARINESTAR GPS CORRECTIONS.
MOTION COMPENSATION: APPLANIX POS-MV4
SONAR: ODOM CV-300 (SINGLEBEAM TRANSDUCER)
SOFTWARE: HYPACK 2018
 - 4) WATER LEVEL ELEVATIONS WERE OBTAINED FROM TBM STEEL CORNER WHICH WAS ESTABLISHED FROM NGS VERTICAL CONTROL POINT BM RANGE (PID QK0021).
 - 5) THE EDITED SINGLEBEAM DATA WAS SORTED INTO A 10 FT. DATA SET WITH THE RESULTING POINTS POSTED.

CHEBOYGAN HARBOR, MI
Cheboygan Harbor
CH_01_BOY_20221004_CS
04 October 2022

Sheet
Reference
Number
6 of 6

U.S. ARMY CORPS OF ENGINEERS DETROIT DISTRICT	
Submitted: _____	Surveyed By: _____
Recommended: _____ Chief, Survey Section	Plotted By: _____
Approved: _____ Chief, Technical Services	Checked By: _____

DISCLAIMER: The data represents the results of data collection operations for a specific US Army Corps of Engineers activity and indicates the general existing conditions. The data is not intended to be used for any purpose other than the intended purpose of the application of the data for other than its intended purpose. The user is responsible for the results of any of the application of the data for other than its intended purpose.

ACCESS CONSTRAINTS: The United States Government furnishes these data and the recipient accepts and uses them with the express understanding that the data are not to be used for any purpose other than the purpose for which they were provided, and that the data are not to be used for any purpose other than the purpose for which they were provided.

WARRANTY: The data are not to be used for any purpose other than the purpose for which they were provided, and that the data are not to be used for any purpose other than the purpose for which they were provided.

