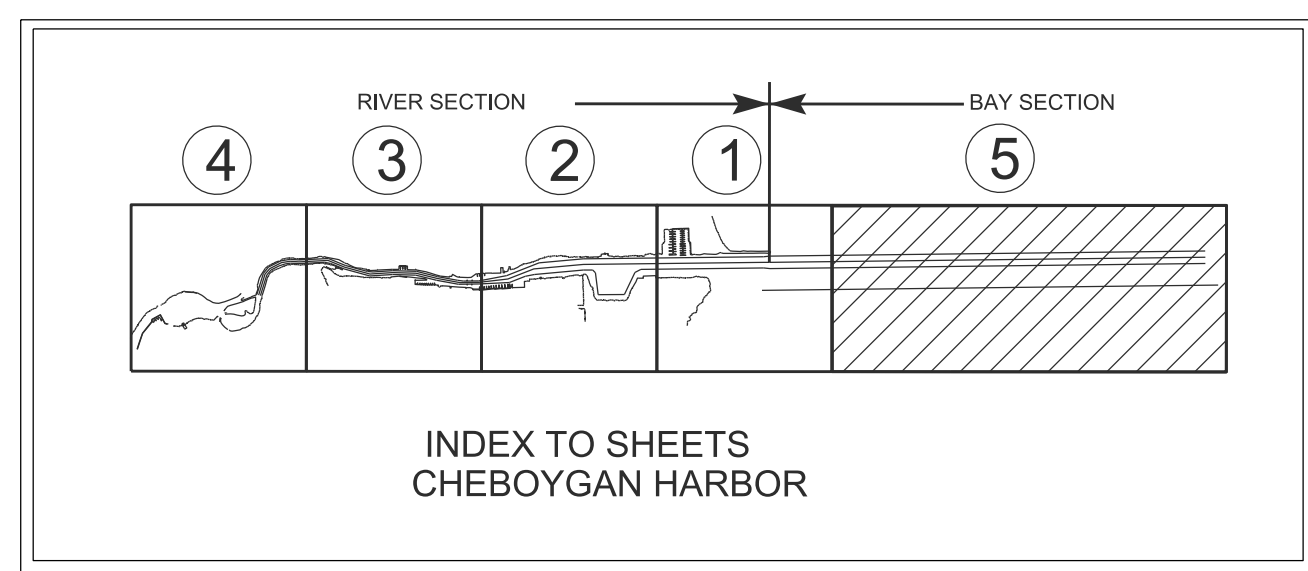
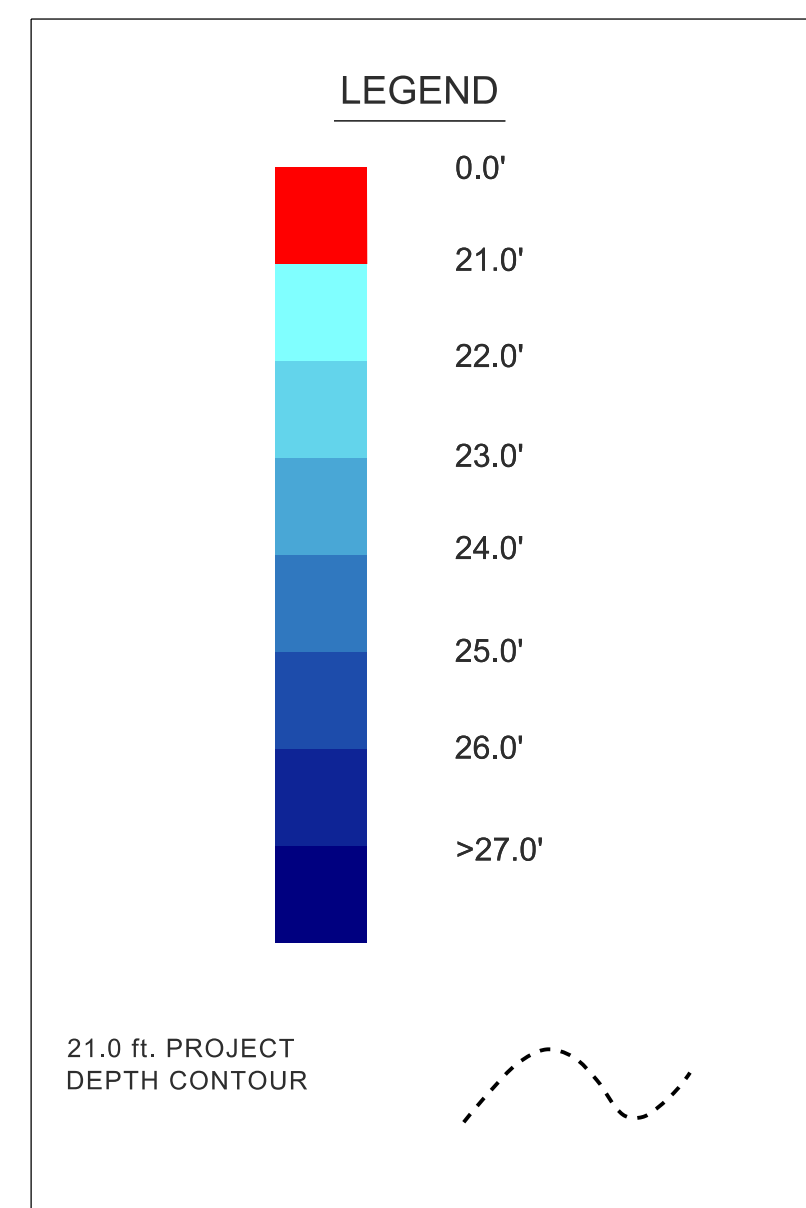
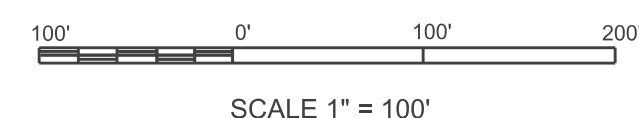
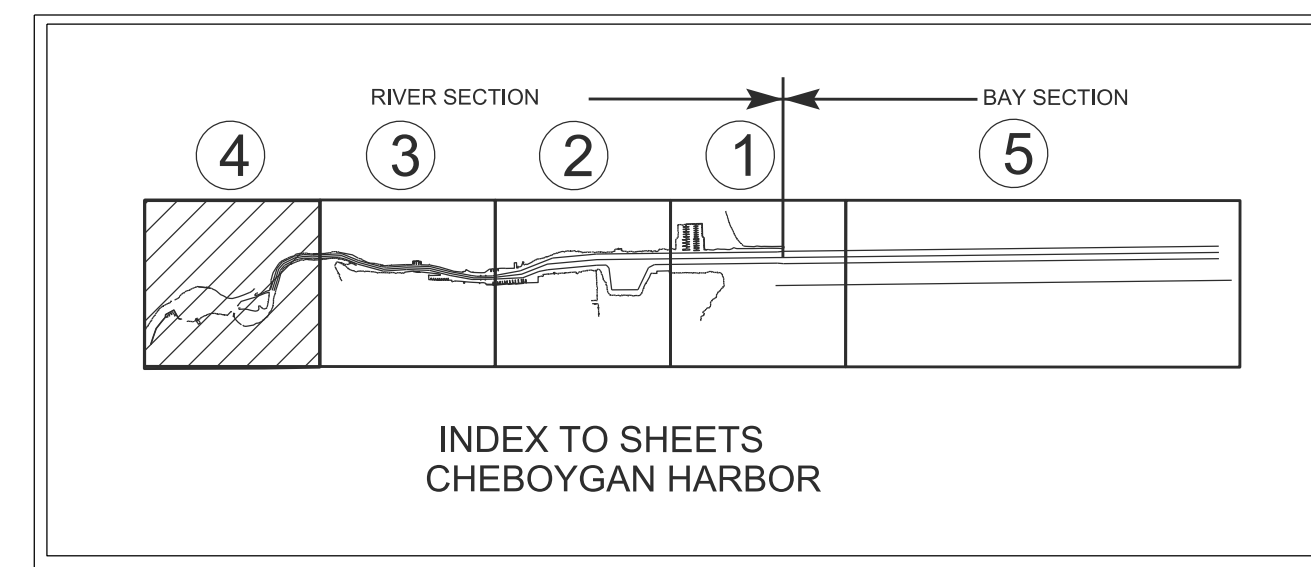
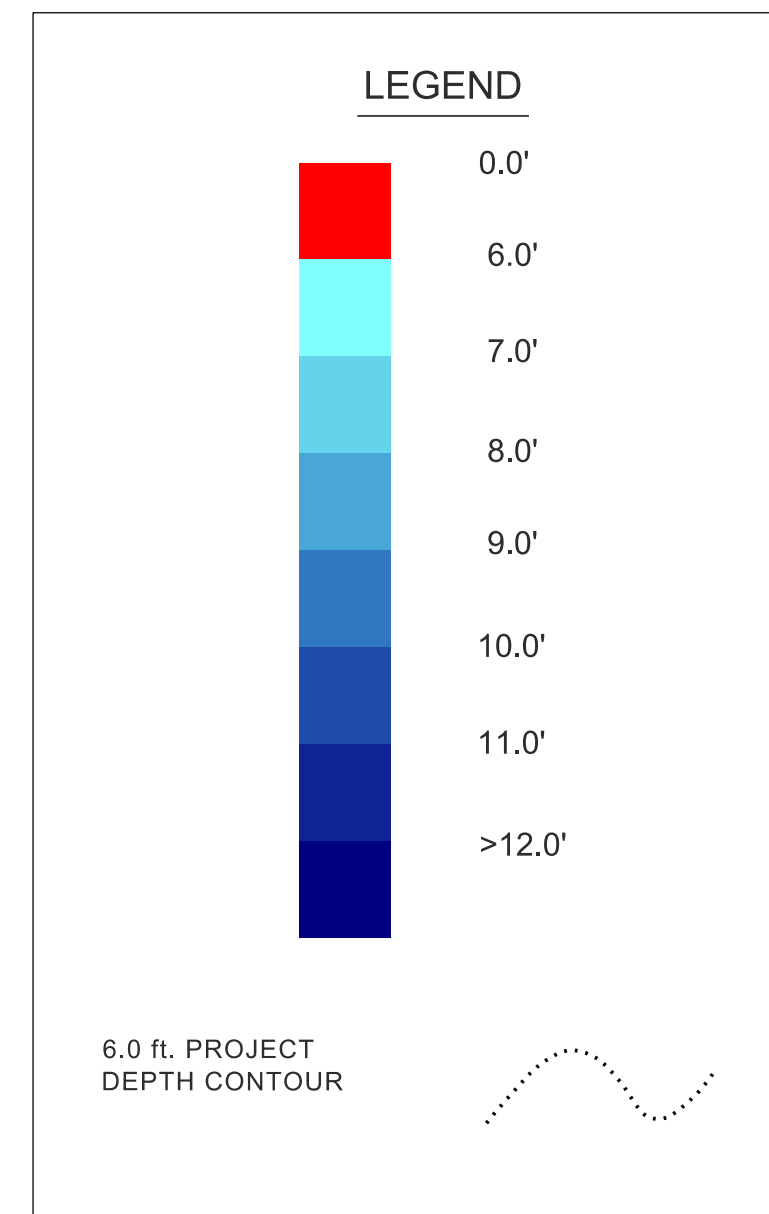
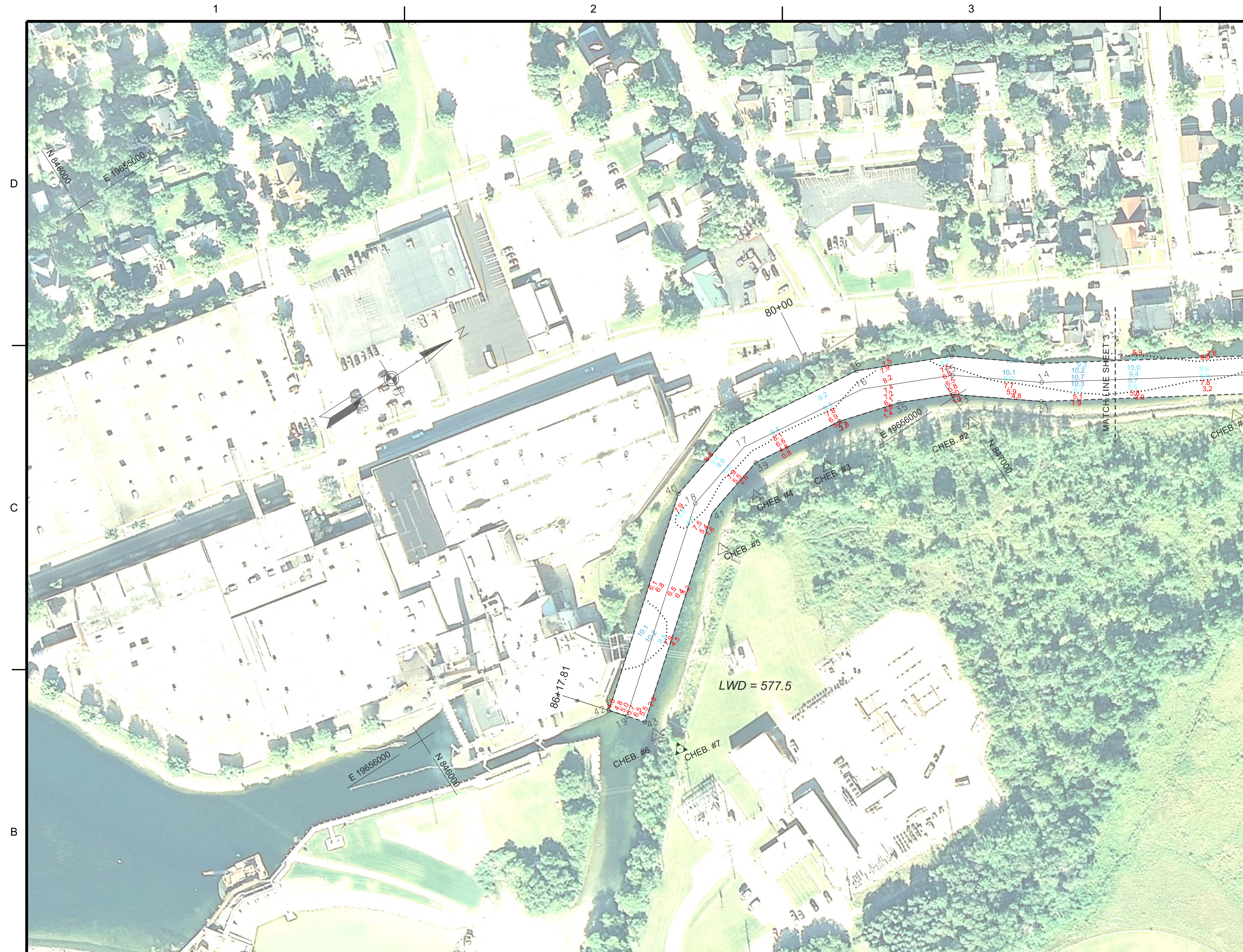


NOTES:

- 1) THE SOUNDINGS AND ASSOCIATED INFORMATION REPRESENTED HEREIN ARE THE RESULT OF SURVEYS MADE ON THE DATE AS INDICATED AND CAN ONLY BE CONSIDERED REPRESENTATIVE OF THE GENERAL CONDITIONS EXISTING AT THE TIME OF SURVEY.
- 2) THE SOUNDINGS DEPICTED HEREIN ARE EXPRESSED IN U.S. SURVEY FEET AND TENTHS THEREOF AND ARE REFERENCED TO THE FOLLOWING DATUMS:
HORIZONTAL: MICHIGAN STATE PLANE COORDINATE SYSTEM, MICHIGAN CENTRAL ZONE #2112, NORTH AMERICAN DATUM (NAD) OF 1983.
VERTICAL: INTERNATIONAL GREAT LAKES DATUM (IGLD) OF 1985.
- 3) THE ABOVE SURVEY WAS CONDUCTED USING THE U.S.A.C.E. SURVEY VESSEL BULTON EMPLOYING THE FOLLOWING COMPONENTS:
POSITIONING: APPLANIX POS-MV4 W/VRS/RTK
MOTION COMPENSATION: APPLANIX POS-MV4
SONAR: ODOM CV-300 (SINGLEBEAM TRANSDUCER)
SOFTWARE: HYPACK 2015
- 4) WATER LEVEL ELEVATIONS WERE OBTAINED FROM NOAA STATIONS, MACKINAW CITY (80%) AND ALPENA (20%)
- 5) THE EDITED SINGLEBEAM DATA WAS SORTED INTO A 10 FT. DATA SET WITH THE RESULTING POINTS POSTED.







CONTROL POINTS (G.P.S.)		
STATION	EAST	NORTH
CHEB. #7	19,656,233.01	846,335.90


CENTERLINE TURNING POINTS		
STATION	EAST	NORTH
14 76+52.37	19,656,055.58	847,130.74
15 77+94.19	19,655,969.55	847,017.99
16 79+38.29	19,655,910.69	846,886.46
17 81+46.93	19,655,886.50	846,679.23
18 82+64.38	19,655,919.49	846,566.51
19 86+17.81	19,656,143.89	846,293.46

CONTROL POINTS (CORPSCON)		
STATION	EAST	NORTH
16	19,656,579.75	846,070.61
17	19,656,561.06	845,122.34
CHEB.#1	19,656,266.23	847,360.40
CHEB.#2	19,656,050.03	847,003.60
CHEB.#3	19,655,983.04	846,774.11
CHEB.#4	19,655,963.38	846,654.01
CHEB.#5	19,656,003.33	846,563.13
CHEB.#6	19,656,193.80	846,316.16

CHANNEL LIMITS TURNING POINTS		
STATION	EAST	NORTH
31	19,656,080.49	847,113.93
32	19,656,030.67	847,147.54
33	19,655,995.51	847,002.56
34	19,655,943.59	847,033.42
35	19,655,960.37	846,924.04
36	19,655,881.42	846,894.51
37	19,655,934.16	846,828.75
38	19,655,855.99	846,676.65
39	19,655,917.00	846,681.80
40	19,655,892.42	846,552.20
41	19,655,946.56	846,580.82
42	19,656,120.71	846,274.41
43	19,656,167.06	846,312.50

NOTES:

- 1) THE SOUNDINGS AND ASSOCIATED INFORMATION REPRESENTED HEREIN ARE THE RESULT OF SURVEYS MADE ON THE DATE AS INDICATED AND CAN ONLY BE CONSIDERED REPRESENTATIVE OF THE GENERAL CONDITIONS EXISTING AT THE TIME OF SURVEY.
- 2) THE SOUNDINGS DEPICTED HEREIN ARE EXPRESSED IN U.S. SURVEY FEET AND TENTHS THEREOF AND ARE REFERENCED TO THE FOLLOWING DATUMS:
HORIZONTAL: MICHIGAN STATE PLANE COORDINATE SYSTEM, MICHIGAN CENTRAL ZONE #2112, NORTH AMERICAN DATUM (NAD) OF 1983.
VERTICAL: INTERNATIONAL GREAT LAKES DATUM (IGLD) OF 1985.
- 3) THE ABOVE SURVEY WAS CONDUCTED USING THE U.S.A.C.E. SURVEY VESSEL BULTON EMPLOYING THE FOLLOWING COMPONENTS:
POSITIONING: APPLANIX POS-MV4 W/VRS/RTK
MOTION COMPENSATION: APPLANIX POS-MV4
SONAR: ODOM CV-300 (SINGLEBEAM TRANSDUCER)
SOFTWARE: HYPACK 2015
- 4) WATER LEVEL ELEVATIONS WERE OBTAINED FROM NOAA STATIONS, MACKINAW CITY (80%) AND ALPENA (20%)
- 5) THE EDITED SINGLEBEAM DATA WAS SORTED INTO A 10 FT. DATA SET WITH THE RESULTING POINTS POSTED.



US Army Corps
of Engineers®

[illegible]

U.S. ARMY CORPS OF ENGINEERS					
DETROIT DISTRICT					
DETROIT, MI					
REVIEWED BY:		APPROVED BY:		SUBMITTED BY:	
KUKAMES,		KUKAMES,		UNIVERSITY,	
		B.R.		28AUG2008	
		CONTRACT NO.:			
		C.V.L.			
DETROIT AREA OFFICE		IMAGE DATE:		FILE NUMBER:	
6307 WEST JEFFERSON AVE.		1"=100'		AUG2008	
DETROIT, MICHIGAN 48209		SIZE:		IMAGE SOURCE:	
		ANSI D		FILE NAME:	
		U.S.G.S.			

CHEBOYGAN HARBOR
MICHIGAN
CONDITION SURVEY
23 JULY 2018

SHEET
IDENTIFICATION