

**LEGEND**

- ..... Cable Submarine
- - - Cable Overhead
- Placement Area
- ⌏ Beacon, General
- Contour Lines
- ▭ Channel Limits

**SOUNDING LEGEND**

- LESS THAN PROJECT DEPTH
- PROJECT DEPTH
- PROJECT DEPTH +1'
- PROJECT DEPTH +2'
- PROJECT DEPTH +3'
- PROJECT DEPTH +4'
- PROJECT DEPTH +5'

1 inch = 51 feet

- NOTES:**
1. THE INFORMATION DEPICTED ON THIS MAP REPRESENTS THE RESULTS OF SURVEYS CONDUCTED ON DATE LISTED AND CAN ONLY BE CONSIDERED AS INDICATING THE GENERAL CONDITIONS PRESENT AT THE TIME.
  2. ALL SOUNDINGS ARE IN FEET AND ARE REFERENCED TO LOW WATER DATUM ELEVATION, 577.5 FEET ABOVE MEAN WATER LEVEL AT RIMOUSKI, QUEBEC (INTERNATIONAL GREAT LAKES DATUM 1985). DEPTHS ARE MEASURED USING AN ODOM ECHOTRAC E20 SINGLEBEAM ECHOSOUNDER FOR THE HYDROGRAPHIC SOUNDINGS.
  3. HORIZONTAL POSITIONING IS DETERMINED USING A TRIMBLE MPS 865 GPS RECEIVER WITH OMNISTAR GPS CORRECTIONS.
  4. GRID COORDINATES ARE BASED ON THE MICHIGAN STATE PLANE COORDINATE SYSTEM, LAMBERT PROJECTION, MICHIGAN NORTH ZONE (211), NORTH AMERICAN DATUM 1983 (NAD83). ALL COORDINATES SHOWN ARE IN U.S. SURVEY FEET.
  5. THE LOCATION OF NAVIGATION AIDS REPRESENT THEIR GENERAL LOCATION AND CANNOT BE CONSIDERED FOR NAVIGATION.
  6. PROJECT DEPTH FOR THIS AREA IS 8.0' AND 10.0'.
- IMAGERY SOURCE: ESRI

  
**US Army Corps  
of Engineers**  
District: CELRE

**DISCLAIMER:** The data presented on this map represents the results of data collected by the U.S. Army Corps of Engineers for a specific purpose. The Corps does not warrant the accuracy, completeness, or reliability of the data for any other purpose. The user is responsible for the results of any application of the data for other than its intended purpose.

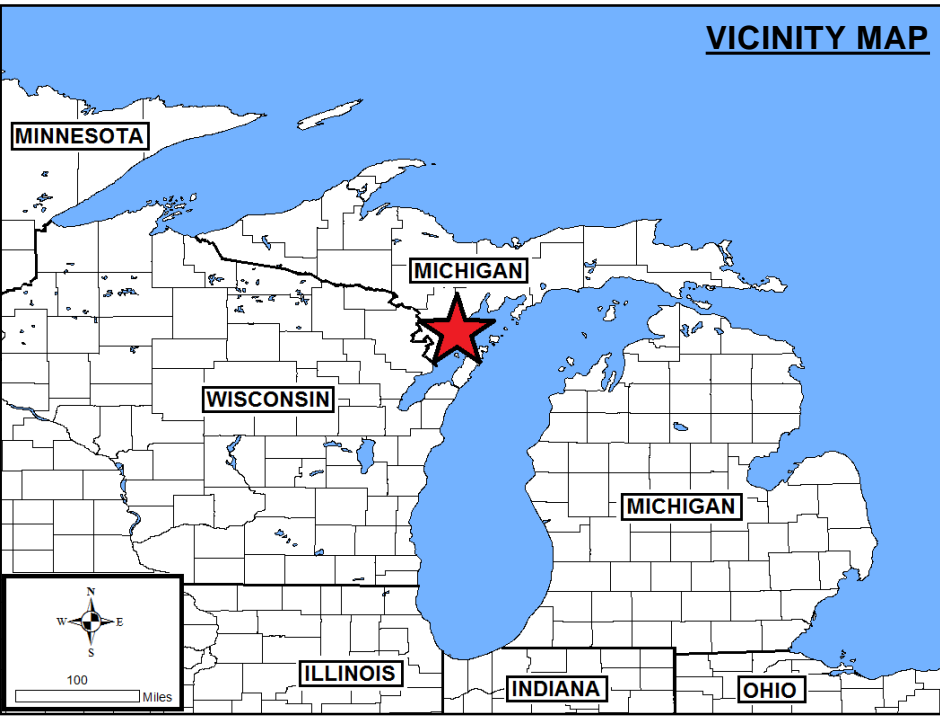
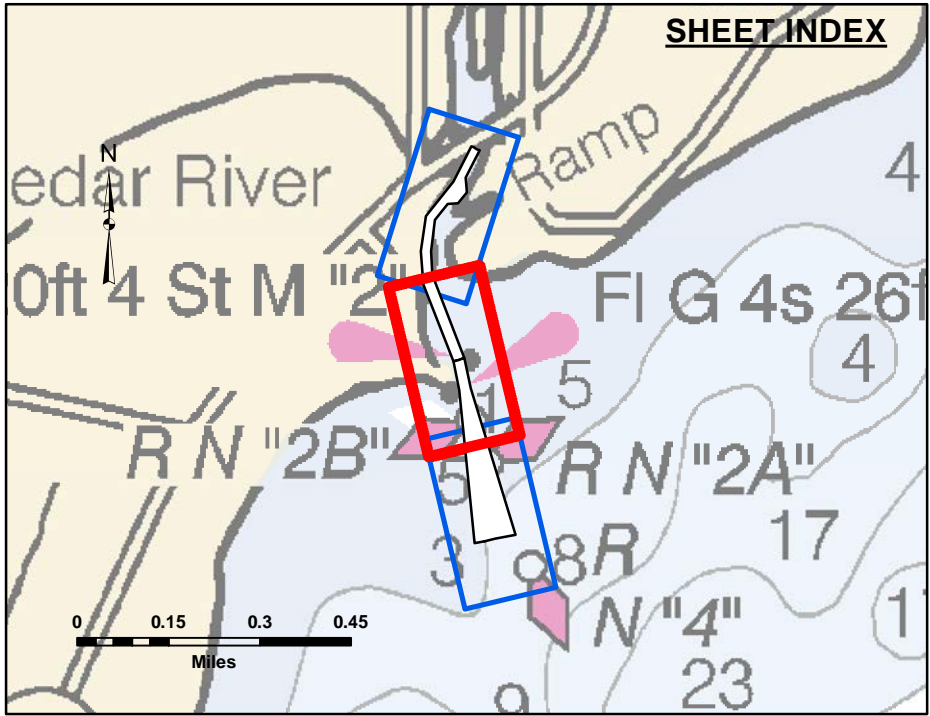
**ACCESS:** The United States Government furnishes these data and the recipient accepts and uses them with the express understanding that the data are not to be used for any other purpose, expressed, or implied, without the express written consent of the U.S. Army Corps of Engineers. The recipient agrees to indemnify the U.S. Army Corps of Engineers from and against all claims, damages, losses, and expenses, including reasonable attorneys' fees, under no liability whatsoever to any person by reason of any use made thereof. These data belong to the Government. Therefore, the recipient agrees to return the data to the U.S. Army Corps of Engineers upon request and to not transfer these data to others without also transferring the Disclaimer.

U.S. ARMY CORPS OF ENGINEERS DETROIT DISTRICT		
Submitted:	Surveyed By:	
Recommended:	Plotted By:	
Approved:	Chief, Survey Section	
	Chief, Technical Services	

**Cedar River, MI**  
**Cedar River**  
**CE\_01\_DAR\_20230511\_CS**  
**11 May 2023**

**Sheet  
Reference  
Number**  
**1 of 3**





**LEGEND**

- ..... Cable Submarine
- - - Cable Overhead
- Placement Area
- ⌋ Beacon, General
- Contour Lines
- ▭ Channel Limits

**SOUNDING LEGEND**

- LESS THAN PROJECT DEPTH
- PROJECT DEPTH
- PROJECT DEPTH +1'
- PROJECT DEPTH +2'
- PROJECT DEPTH +3'
- PROJECT DEPTH +4'
- PROJECT DEPTH +5'

1 inch = 51 feet

0 50 100 150 200 250 300 Feet

- NOTES:**
1. THE INFORMATION DEPICTED ON THIS MAP REPRESENTS THE RESULTS OF SURVEYS CONDUCTED ON DATE LISTED AND CAN ONLY BE CONSIDERED AS INDICATING THE GENERAL CONDITIONS PRESENT AT THE TIME.
  2. ALL SOUNDINGS ARE IN FEET AND ARE REFERENCED TO LOW WATER DATUM ELEVATION, 577.5 FEET ABOVE MEAN WATER LEVEL AT RIMOUSKI, QUEBEC (INTERNATIONAL GREAT LAKES DATUM 1985). DEPTHS ARE MEASURED USING AN ODOM ECHOTRAC E20 SINGLEBEAM ECHOSOUNDER FOR THE HYDROGRAPHIC SOUNDINGS.
  3. HORIZONTAL POSITIONING IS DETERMINED USING A TRIMBLE MPS 865 GPS RECEIVER WITH OMNISTAR GPS CORRECTIONS.
  4. GRID COORDINATES ARE BASED ON THE MICHIGAN STATE PLANE COORDINATE SYSTEM, LAMBERT PROJECTION, MICHIGAN NORTH ZONE (2111), NORTH AMERICAN DATUM 1983 (NAD83). ALL COORDINATES SHOWN ARE IN U.S. SURVEY FEET.
  5. THE LOCATION OF NAVIGATION AIDS REPRESENT THEIR GENERAL LOCATION AND CANNOT BE CONSIDERED FOR NAVIGATION.
  6. PROJECT DEPTH FOR THIS AREA IS 8.0' AND 10.0'.
- IMAGERY SOURCE: ESRI

**US Army Corps  
of Engineers**  
District: CELRE

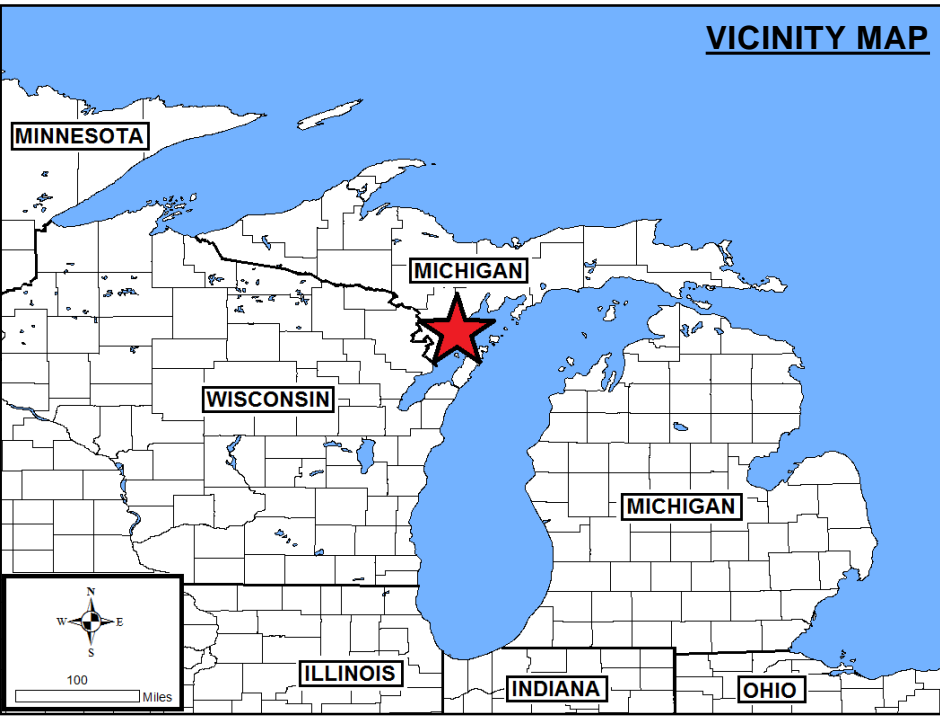
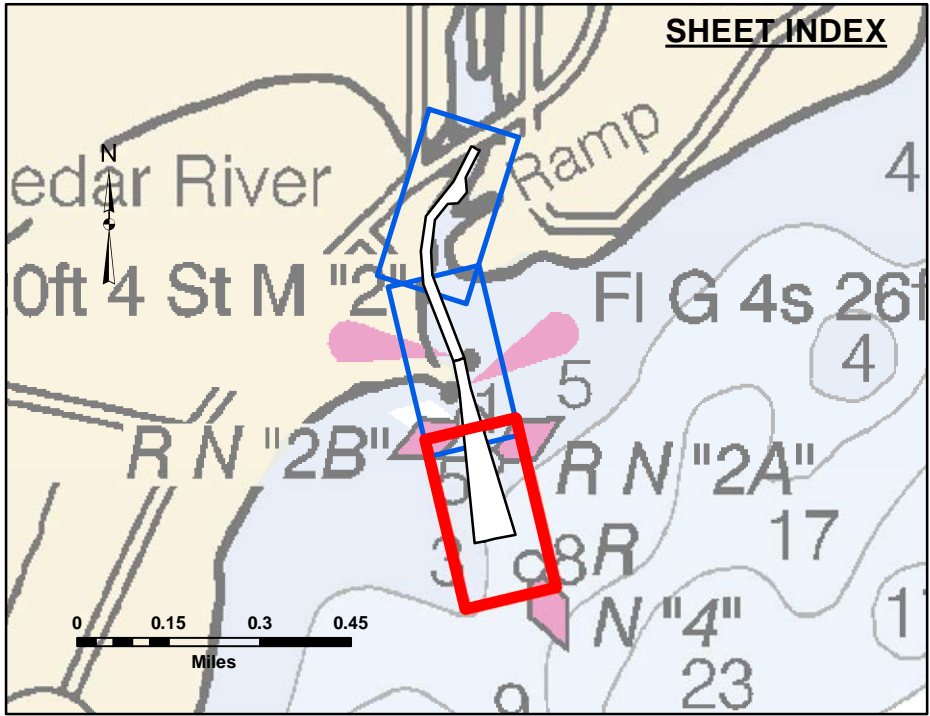
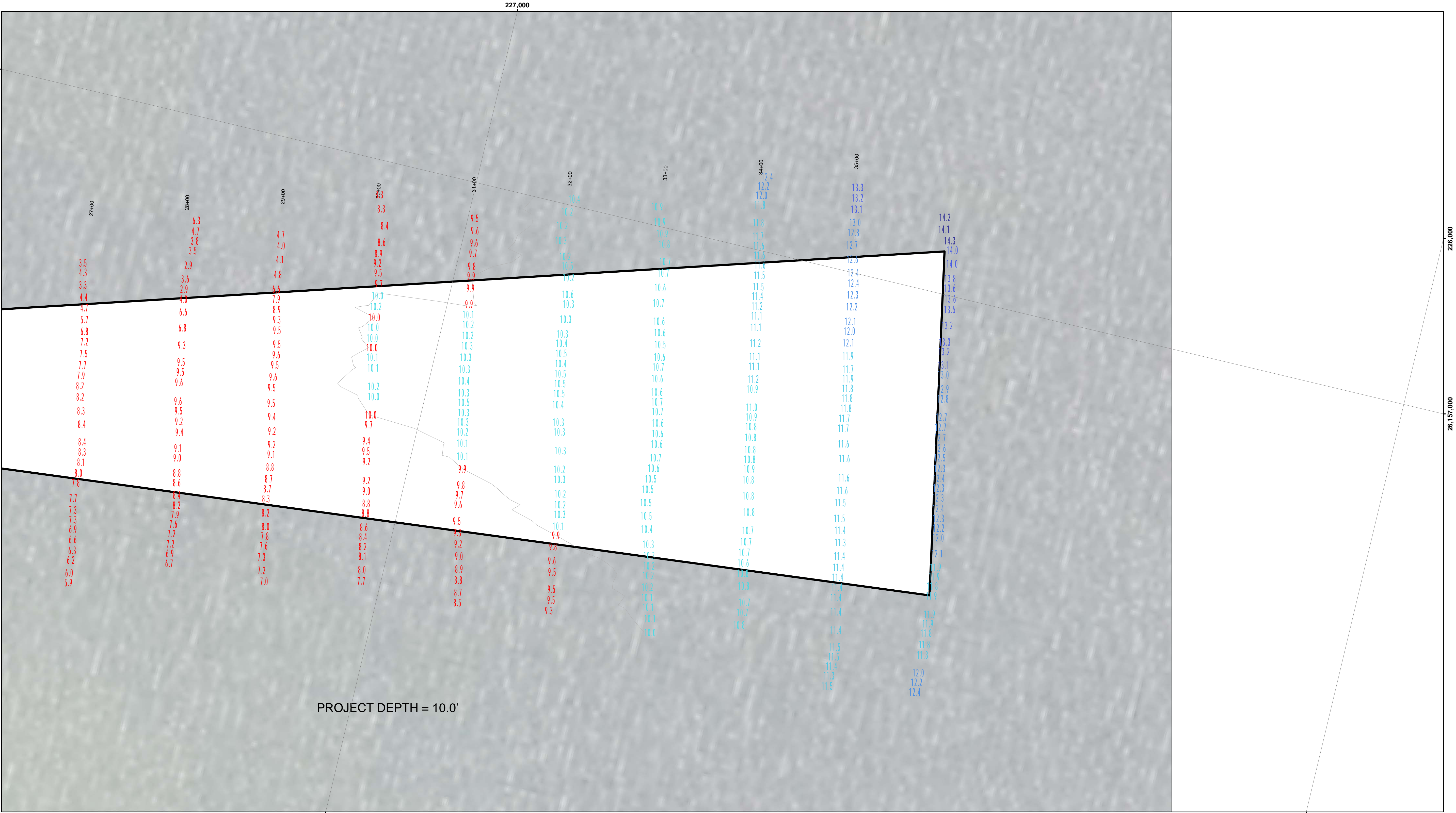
DISCLAIMER: The data represented on this map is the result of data collected for a specific purpose and is not intended for use in any other manner. The user is responsible for the results of any application of the data for other than its intended purpose. The United States Government furnishes these data and the recipient accepts and uses them with the express understanding that the data are not to be used for any purpose other than that for which they were collected. The user is responsible for the results of any application of the data for other than its intended purpose. The user is responsible for the results of any application of the data for other than its intended purpose. The user is responsible for the results of any application of the data for other than its intended purpose.

U.S. ARMY CORPS OF ENGINEERS DETROIT DISTRICT	
Submitted: _____	Surveyed By: _____
Recommended: _____ Chief, Survey Section	Plotted By: _____
Approved: _____ Chief, Technical Services	Checked By: _____

**Cedar River, MI**  
**Cedar River**  
**CE\_01\_DAR\_20230511\_CS**  
**11 May 2023**

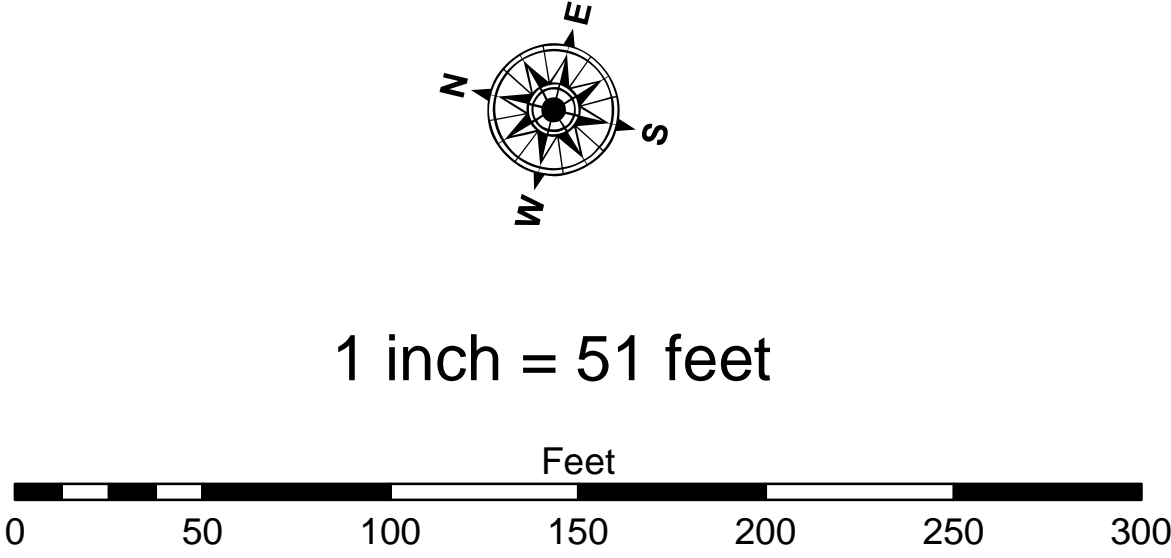
**Sheet  
Reference  
Number**  
**2 of 3**





LEGEND	
.....	Cable Submarine
- - -	Cable Overhead
□	Placement Area
⌋	Beacon, General
—	Contour Lines
▭	Channel Limits

SOUNDING LEGEND	
■	LESS THAN PROJECT DEPTH
■	PROJECT DEPTH
■	PROJECT DEPTH +1'
■	PROJECT DEPTH +2'
■	PROJECT DEPTH +3'
■	PROJECT DEPTH +4'
■	PROJECT DEPTH +5'



- NOTES:**
1. THE INFORMATION DEPICTED ON THIS MAP REPRESENTS THE RESULTS OF SURVEYS CONDUCTED ON DATE LISTED AND CAN ONLY BE CONSIDERED AS INDICATING THE GENERAL CONDITIONS PRESENT AT THE TIME.
  2. ALL SOUNDINGS ARE IN FEET AND ARE REFERENCED TO LOW WATER DATUM ELEVATION, 577.5 FEET ABOVE MEAN WATER LEVEL AT RIMOUSKI, QUEBEC (INTERNATIONAL GREAT LAKES DATUM 1985). DEPTHS ARE MEASURED USING AN ODOM ECHOTRAC E20 SINGLEBEAM ECHOSOUNDER FOR THE HYDROGRAPHIC SOUNDINGS.
  3. HORIZONTAL POSITIONING IS DETERMINED USING A TRIMBLE MPS 865 GPS RECEIVER WITH OMNISTAR GPS CORRECTIONS.
  4. GRID COORDINATES ARE BASED ON THE MICHIGAN STATE PLANE COORDINATE SYSTEM, LAMBERT PROJECTION, MICHIGAN NORTH ZONE (211), NORTH AMERICAN DATUM 1983 (NAD83). ALL COORDINATES SHOWN ARE IN U.S. SURVEY FEET.
  5. THE LOCATION OF NAVIGATION AIDS REPRESENT THEIR GENERAL LOCATION AND CANNOT BE CONSIDERED FOR NAVIGATION.
  6. PROJECT DEPTH FOR THIS AREA IS 8.0' AND 10.0'.
- IMAGERY SOURCE: ESRI

Cedar River, MI  
Cedar River  
CE\_01\_DAR\_20230511\_CS  
11 May 2023

Sheet  
Reference  
Number  
3 of 3

U.S. ARMY CORPS OF ENGINEERS DETROIT DISTRICT			
Submitted:	_____	Surveyed By:	_____
Recommended:	_____	Plotted By:	_____
Approved:	_____	Checked By:	_____

**DISCLAIMER:** The data presented on this map represents the results of data collection operations for a specific US Army Corps of Engineers activity and indicates the general existing conditions. The data is not intended to be used for any purpose other than the intended purpose. The user is responsible for the results of any application of the data for other than its intended purpose.

**ACCESS AGREEMENT:** The United States Government furnishes these data and the recipient accepts and uses them with the express understanding that the data are not to be used for any purpose other than the intended purpose. The data are not to be used for any purpose other than the intended purpose. The data are not to be used for any purpose other than the intended purpose. The data are not to be used for any purpose other than the intended purpose.

