

LEGEND

- Cable Submarine
- - - Cable Overhead
- Placement Area
- ┆ Beacon, General
- Contour Lines
- ▭ Channel Limits

SOUNDING LEGEND

- LESS THAN PROJECT DEPTH
- PROJECT DEPTH
- PROJECT DEPTH +1'
- PROJECT DEPTH +2'
- PROJECT DEPTH +3'
- PROJECT DEPTH +4'
- PROJECT DEPTH +5'

1 inch = 50 feet

Feet

0 50 100 150 200 250 300

- NOTES:**
1. THE INFORMATION DEPICTED ON THIS MAP REPRESENTS THE RESULTS OF SURVEYS CONDUCTED ON DATE LISTED AND CAN ONLY BE CONSIDERED AS INDICATING THE GENERAL CONDITIONS PRESENT AT THE TIME.
 2. ALL SOUNDINGS ARE IN FEET AND ARE REFERENCED TO LOW WATER DATUM ELEVATION, 577.5 FEET ABOVE MEAN WATER LEVEL AT RIMOUSKI, QUEBEC (INTERNATIONAL GREAT LAKES DATUM 1985). DEPTHS ARE MEASURED USING AN ODOM ECHOTRAC E20 SINGLEBEAM ECHOSOUNDER FOR THE HYDROGRAPHIC SOUNDINGS.
 3. HORIZONTAL POSITIONING IS DETERMINED USING A TRIMBLE MPS 865 GPS RECEIVER WITH OMNISTAR GPS CORRECTIONS.
 4. GRID COORDINATES ARE BASED ON THE MICHIGAN STATE PLANE COORDINATE SYSTEM, LAMBERT PROJECTION, MICHIGAN NORTH ZONE (2111), NORTH AMERICAN DATUM 1983 (NAD83). ALL COORDINATES SHOWN ARE IN U.S. SURVEY FEET.
 5. THE LOCATION OF NAVIGATION AIDS REPRESENT THEIR GENERAL LOCATION AND CANNOT BE CONSIDERED FOR NAVIGATION.
 6. PROJECT DEPTH FOR THIS AREA IS 8.0' AND 10.0'.
- IMAGERY SOURCE: ESRI


**US Army Corps
of Engineers**
District: CELRE

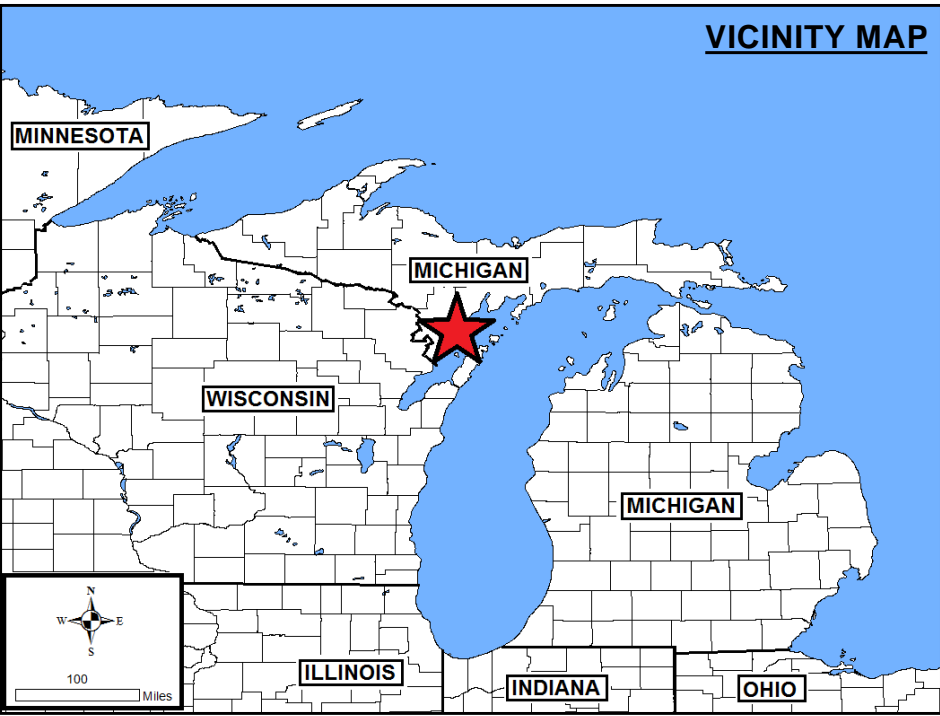
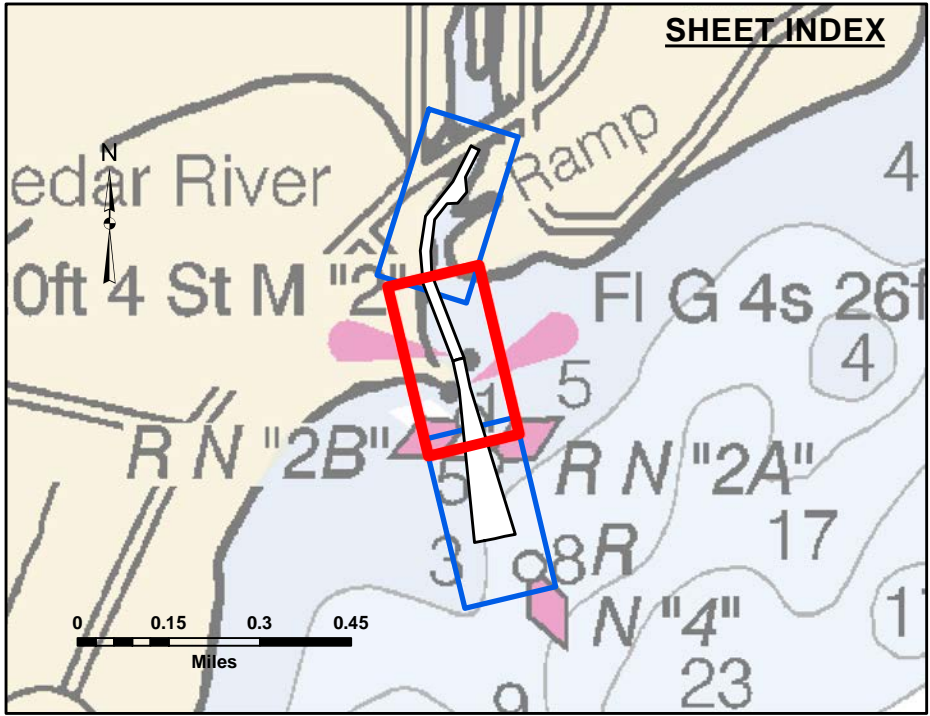
Product Liability: The data represents the results of data collection/processing for a specific US Army Corps of Engineers activity and indicates the general existing conditions. The user is responsible for the results accuracy, specifications. The user is responsible for the results of any of the application of the data for other than its intended purpose.

DISCLAIMER: The United States Government furnishes these data and the recipient accepts and uses them with the express understanding that the data are not to be used for any purpose other than that for which they were provided. The recipient may not transfer these data to others without also transferring the Disclaimer.

U.S. ARMY CORPS OF ENGINEERS DETROIT DISTRICT			
Submitted:	Surveyed By:	Plotted By:	Checked By:
Recommended:	Chief, Survey Section		
Approved:	Chief, Technical Services		

Cedar River, MI
Cedar River
CE_01_DAR_20220831_CS
31 August 2022

**Sheet
Reference
Number**
1 of 3



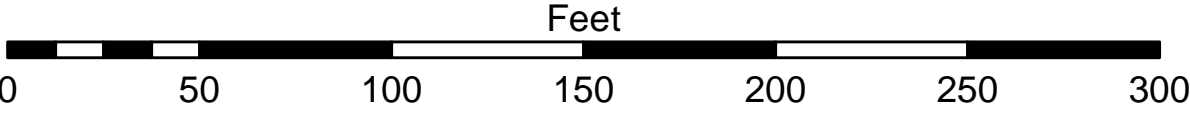
LEGEND

- Cable Submarine
- - - Cable Overhead
- Placement Area
- ┆ Beacon, General
- Contour Lines
- ▭ Channel Limits

SOUNDING LEGEND

- LESS THAN PROJECT DEPTH
- PROJECT DEPTH
- PROJECT DEPTH +1'
- PROJECT DEPTH +2'
- PROJECT DEPTH +3'
- PROJECT DEPTH +4'
- PROJECT DEPTH +5'

1 inch = 50 feet



- NOTES:**
1. THE INFORMATION DEPICTED ON THIS MAP REPRESENTS THE RESULTS OF SURVEYS CONDUCTED ON DATE LISTED AND CAN ONLY BE CONSIDERED AS INDICATING THE GENERAL CONDITIONS PRESENT AT THE TIME.
 2. ALL SOUNDINGS ARE IN FEET AND ARE REFERENCED TO LOW WATER DATUM ELEVATION, 577.5 FEET ABOVE MEAN WATER LEVEL AT RIMOUSKI, QUEBEC (INTERNATIONAL GREAT LAKES DATUM 1985). DEPTHS ARE MEASURED USING AN ODOM ECHOTRAC E20 SINGLEBEAM ECHOSOUNDER FOR THE HYDROGRAPHIC SOUNDINGS.
 3. HORIZONTAL POSITIONING IS DETERMINED USING A TRIMBLE MPS 865 GPS RECEIVER WITH OMNISTAR GPS CORRECTIONS.
 4. GRID COORDINATES ARE BASED ON THE MICHIGAN STATE PLANE COORDINATE SYSTEM, LAMBERT PROJECTION, MICHIGAN NORTH ZONE (2111), NORTH AMERICAN DATUM 1983 (NAD83). ALL COORDINATES SHOWN ARE IN U.S. SURVEY FEET.
 5. THE LOCATION OF NAVIGATION AIDS REPRESENT THEIR GENERAL LOCATION AND CANNOT BE CONSIDERED FOR NAVIGATION.
 6. PROJECT DEPTH FOR THIS AREA IS 8.0' AND 10.0'.
- IMAGERY SOURCE: ESRI


**US Army Corps
of Engineers**
District: CELRE

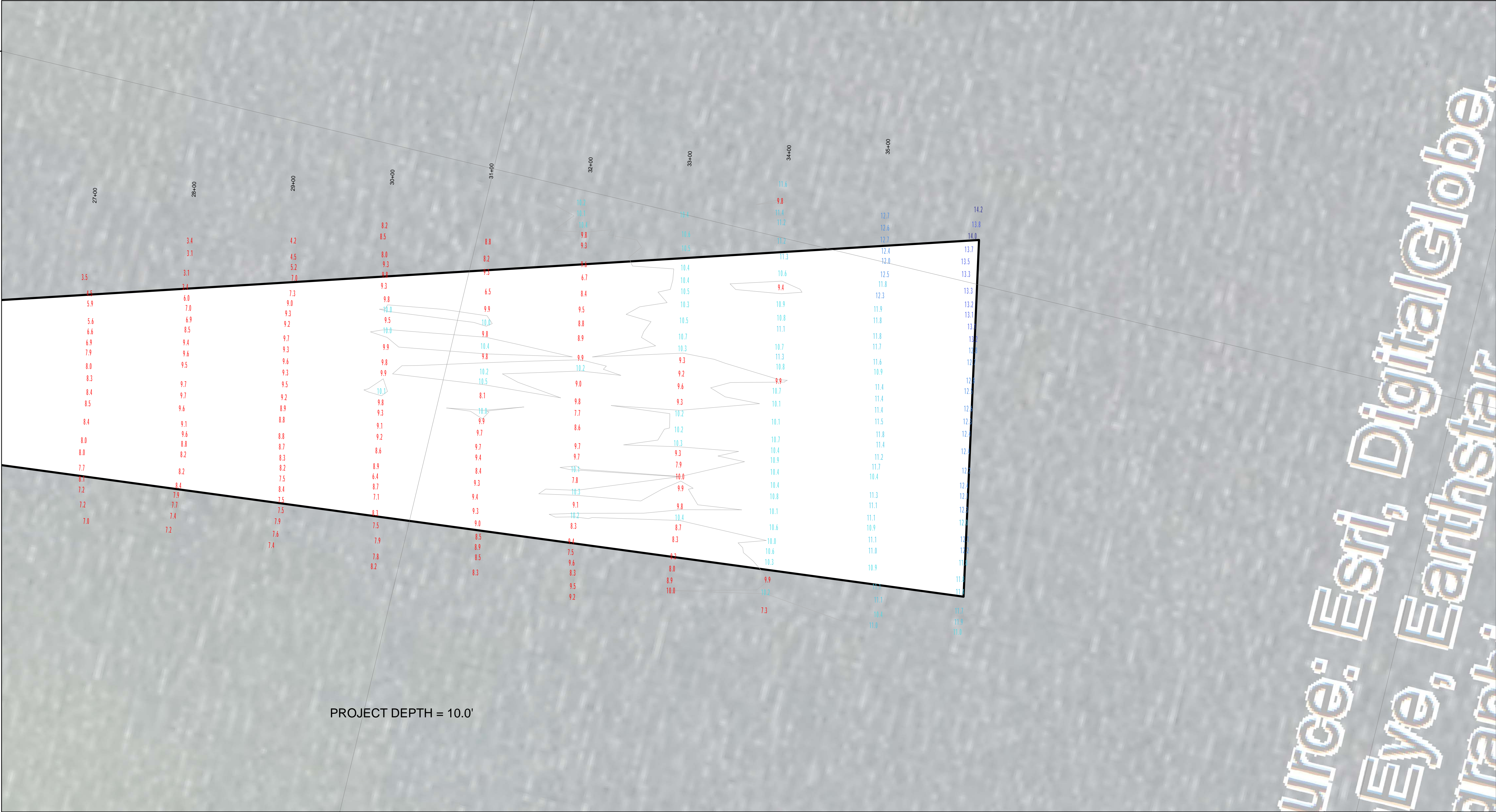
Product Liability: The data represents the results of data collection and processing for a specific US Army Corps of Engineers activity and indicates the general existing conditions. The user is responsible for the results of the application of the data for other than its intended purpose.

Access: The United States Government furnishes these data and the recipient accepts and uses them with the express understanding that the data are not to be used for any purpose other than that for which they were provided, and that the data are not to be used for any purpose other than that for which they were provided. The recipient may not transfer these data to others without transferring the Disclaimer.

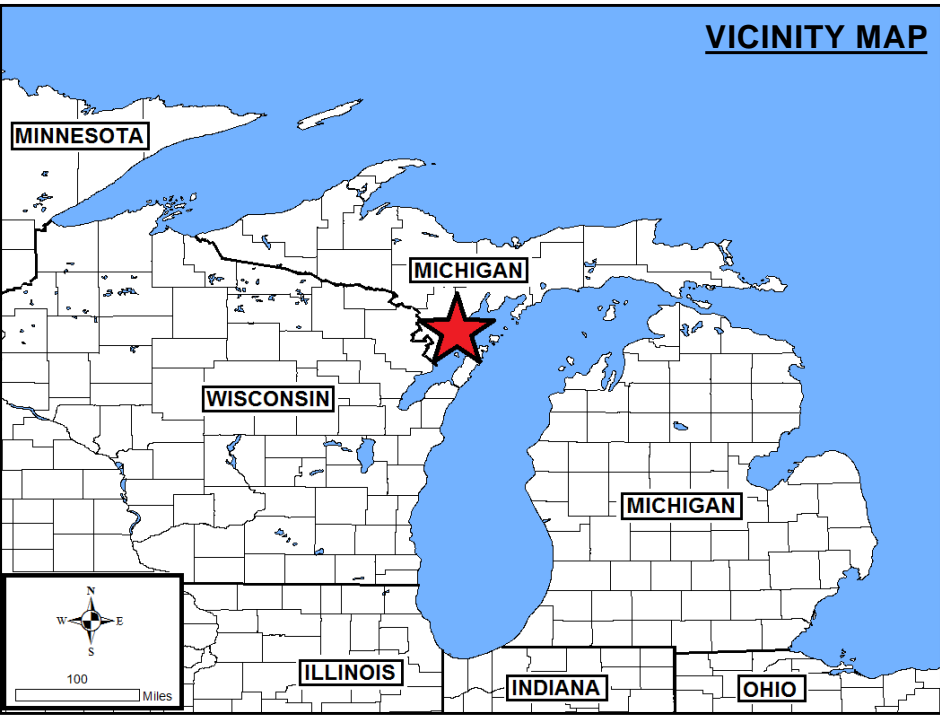
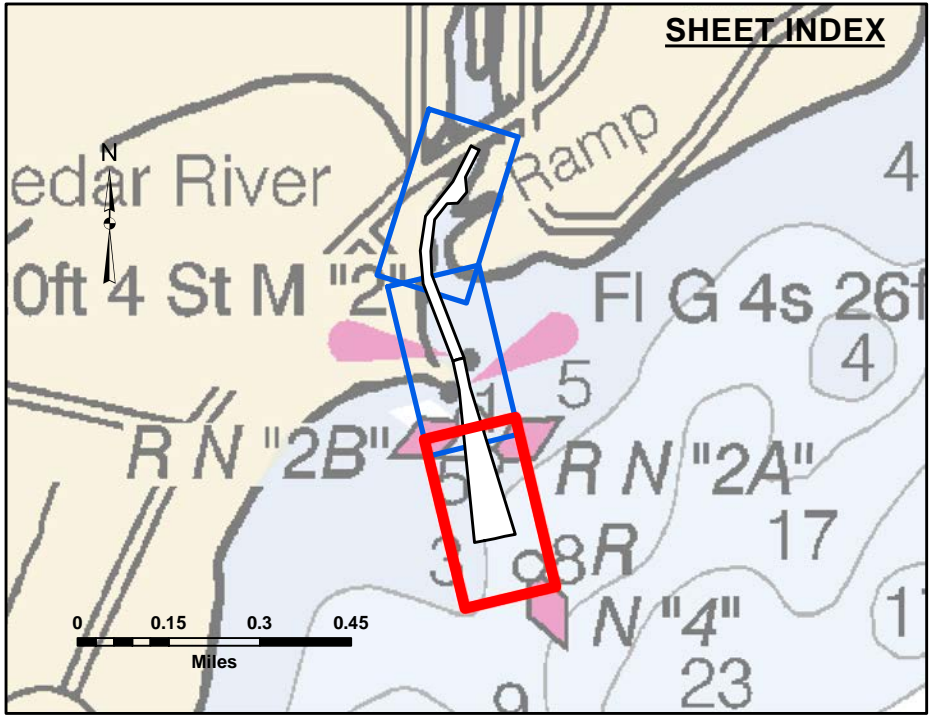
U.S. ARMY CORPS OF ENGINEERS DETROIT DISTRICT		
Submitted:	Surveyed By:	
Recommended:	Plotted By:	
Approved:	Chief, Survey Section	Chief, Technical Services

Cedar River, MI
Cedar River
CE_01_DAR_20220831_CS
31 August 2022

**Sheet
Reference
Number**
2 of 3



PROJECT DEPTH = 10.0'



LEGEND

.....

Cable Submarine

--

Cable Overhead

Placement Area

Beacon, General

Contour Lines

Channel Limits

SOUNDING LEGEND

LESS THAN PROJECT DEPTH

PROJECT DEPTH

PROJECT DEPTH +1'

PROJECT DEPTH +2'

PROJECT DEPTH +3'

PROJECT DEPTH +4'

PROJECT DEPTH +5'

N

E

S

W

1 inch = 50 feet

0

50

100

150

200

250

300

Feet

- NOTES:
1. THE INFORMATION DEPICTED ON THIS MAP REPRESENTS THE RESULTS OF SURVEYS CONDUCTED ON DATE LISTED AND CAN ONLY BE CONSIDERED AS INDICATING THE GENERAL CONDITIONS PRESENT AT THE TIME.

2. ALL SOUNDINGS ARE IN FEET AND ARE REFERENCED TO LOW WATER DATUM ELEVATION, 577.5 FEET ABOVE MEAN WATER LEVEL AT RIMOUSKI, QUEBEC (INTERNATIONAL GREAT LAKES DATUM 1985). DEPTHS ARE MEASURED USING AN ODOM ECHOTRAC E20 SINGLEBEAM ECHOSOUNDER FOR THE HYDROGRAPHIC SOUNDINGS.

3. HORIZONTAL POSITIONING IS DETERMINED USING A TRIMBLE MPS 865 GPS RECEIVER WITH OMNISTAR GPS CORRECTIONS.

4. GRID COORDINATES ARE BASED ON THE MICHIGAN STATE PLANE COORDINATE SYSTEM, LAMBERT PROJECTION, MICHIGAN NORTH ZONE (2111), NORTH AMERICAN DATUM 1983 (NAD83). ALL COORDINATES SHOWN ARE IN U.S. SURVEY FEET.

5. THE LOCATION OF NAVIGATION AIDS REPRESENT THEIR GENERAL LOCATION AND CANNOT BE CONSIDERED FOR NAVIGATION.

6. PROJECT DEPTH FOR THIS AREA IS 8.0' AND 10.0'.
- IMAGERY SOURCE: ESRI

US Army Corps of Engineers District: CELRE

DISCLAIMER: The data represents the results of data collection/processing for a specific US Army Corps of Engineers activity and indicates the general existing conditions. The user is responsible for the results of any of the application of the data for other than its intended purpose.

Access: Components: The United States Government furnishes these data and the recipient accepts and uses them with the express understanding that the data are not to be used for any purpose other than that for which they were provided. The user is responsible for the results of any of the application of the data for other than its intended purpose.

U.S. ARMY CORPS OF ENGINEERS
DETROIT DISTRICT

Submitted: _____

Recommended: _____

Approved: _____

Surveyed By: _____

Plotted By: _____

Checked By: _____

Cedar River, MI
Cedar River
CE_01_DAR_20220831_CS
31 August 2022

Sheet Reference Number
3 of 3