



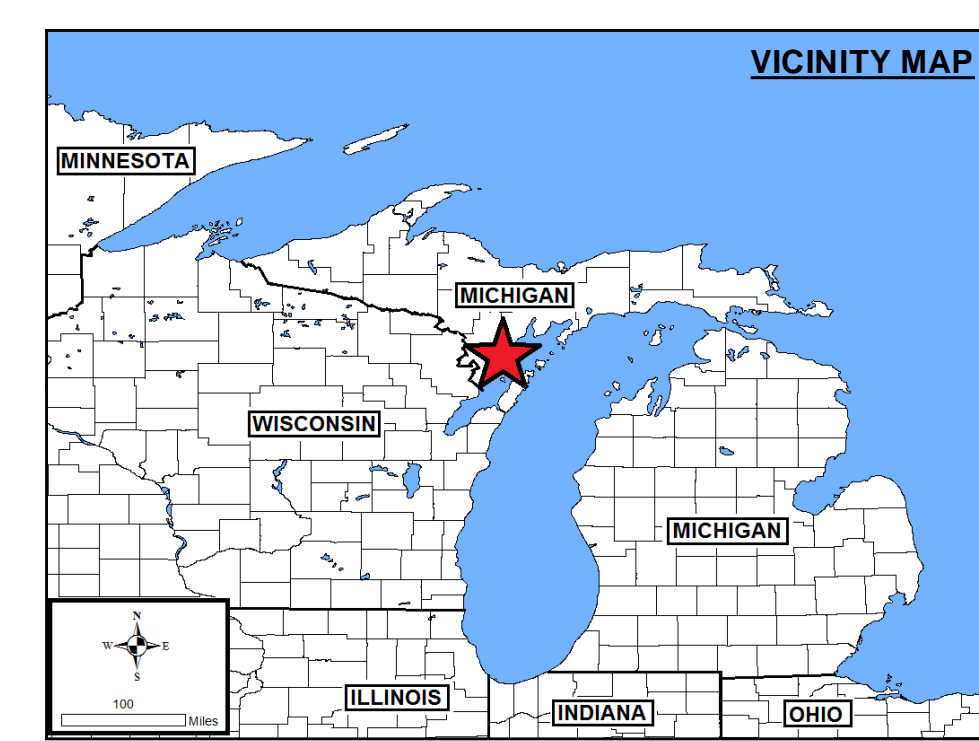
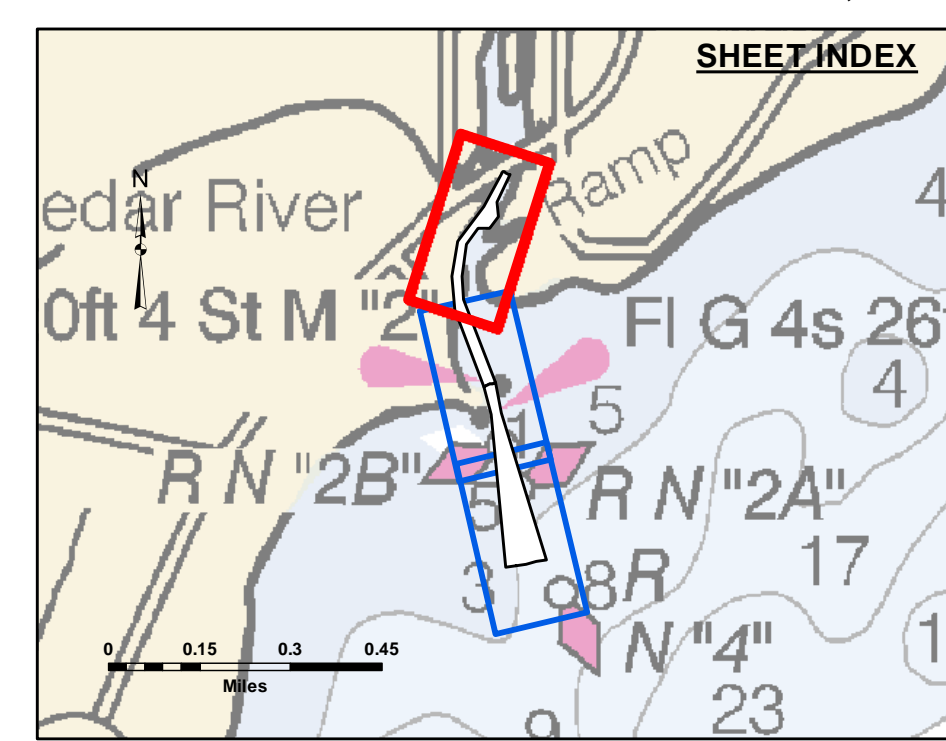
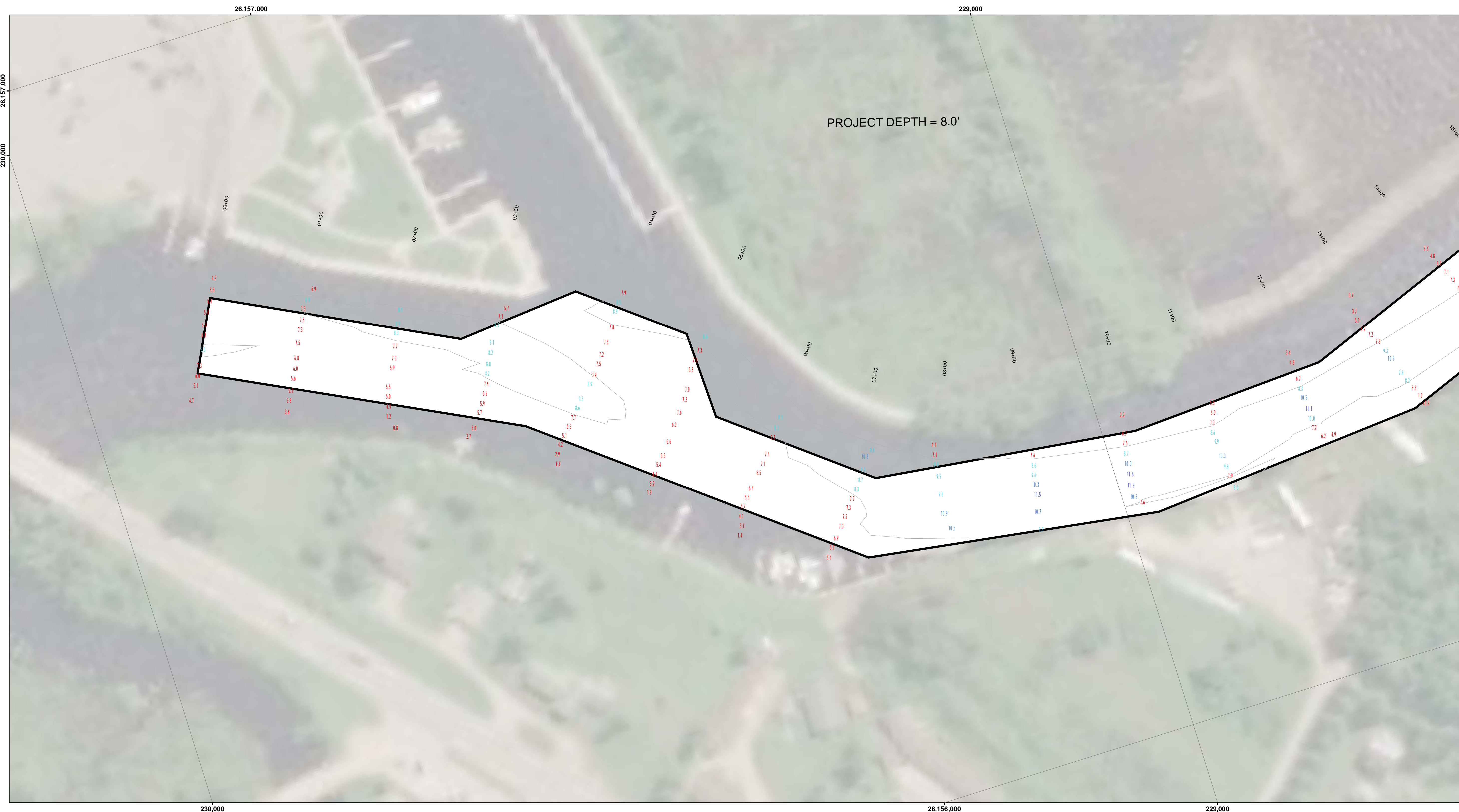
**Disclaimer:** The data represents the results of data collection and processing for a specific US Army Corps of Engineers activity and indicates the general existing conditions. The user is responsible for the accuracy, completeness, and reliability of the data for other than its intended purpose.

**Access Constraints:** The United States Government furnishes these data and the recipient accepts and uses them with the express understanding that they are not to be distributed, reproduced, expressed, or implied concerning the accuracy, completeness, readability, usability, or suitability for any particular purpose of the recipient. These data belong to the Government. Therefore the recipient may not transfer, disseminate, or use these data for other than its intended purpose.

U.S. ARMY CORPS OF ENGINEERS DETROIT DISTRICT		
Submitted By:	Surveyed By:	
Recommended By: Chief, Survey Section	Plotted By:	
Approved:	Checked By:	

**Cedar River, MI**  
Cedar River  
CE\_01\_DAR\_20200914\_CS  
14 September 2020

**Sheet Reference Number**  
1 of 3

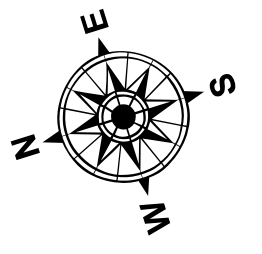


**LEGEND**

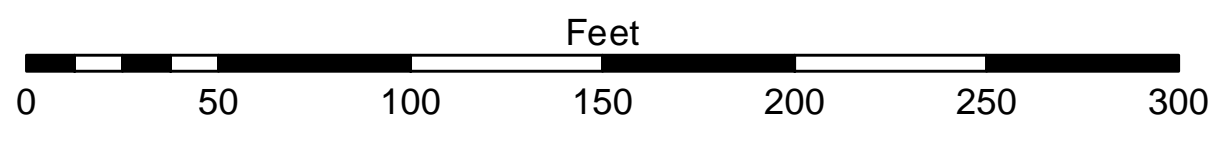
- ..... Cable Submarine
- - - Cable Overhead
- Placement Area
- ⊥ Beacon, General
- Contour Lines
- ▭ Channel Limits

**SOUNDING LEGEND**

- LESS THAN PROJECT DEPTH
- PROJECT DEPTH
- PROJECT DEPTH +1'
- PROJECT DEPTH +2'
- PROJECT DEPTH +3'
- PROJECT DEPTH +4'
- PROJECT DEPTH +5'



1 inch = 50 feet



- NOTES:**
1. THE INFORMATION DEPICTED ON THIS MAP REPRESENTS THE RESULTS OF SURVEYS CONDUCTED ON DATE LISTED AND CAN ONLY BE CONSIDERED AS INDICATING THE GENERAL CONDITIONS PRESENT AT THE TIME.
  2. ALL SOUNDINGS ARE IN FEET AND ARE REFERENCED TO LOW WATER DATUM ELEVATION, 577.5 FEET ABOVE MEAN WATER LEVEL AT RIMOUSKI, QUEBEC (INTERNATIONAL GREAT LAKES DATUM 1985). DEPTHS ARE MEASURED USING AN ODOM ECHOTRAC E20 SINGLEBEAM ECHOSOUNDER FOR THE HYDROGRAPHIC SOUNDINGS.
  3. HORIZONTAL POSITIONING IS DETERMINED USING A TRIMBLE SPS461 SUB-METER DGPS RECEIVER FOR HYDROGRAPHIC SOUNDINGS.
  4. GRID COORDINATES ARE BASED ON THE MICHIGAN STATE PLANE COORDINATE SYSTEM, LAMBERT PROJECTION, MICHIGAN NORTH ZONE (2111), NORTH AMERICAN DATUM 1983 (NAD83). ALL COORDINATES SHOWN ARE IN U.S. SURVEY FEET.
  5. THE LOCATION OF NAVIGATION AIDS REPRESENT THEIR GENERAL LOCATION AND CANNOT BE CONSIDERED FOR NAVIGATION.
  6. PROJECT DEPTH FOR THIS AREA IS 8.0' AND 10.0'.
- IMAGERY SOURCE: ESRI



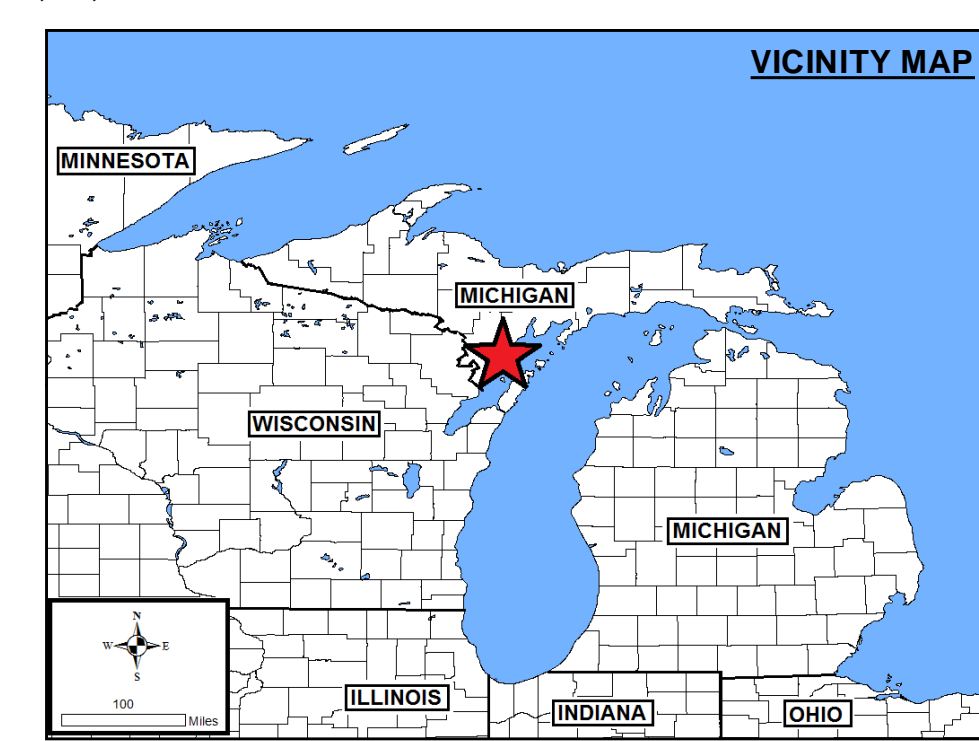
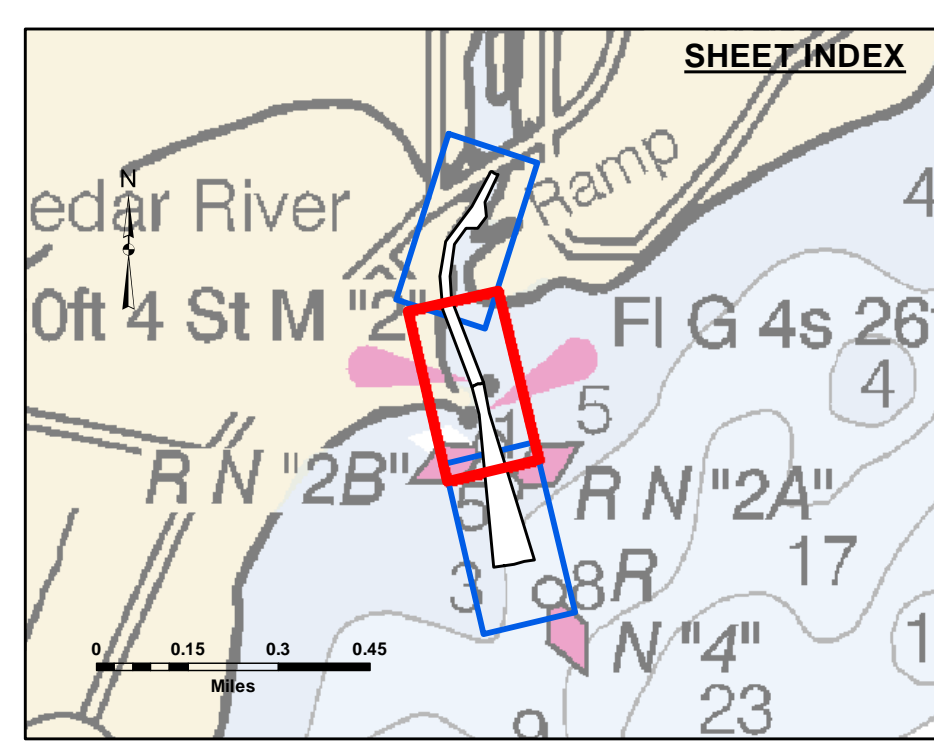


**Disclaimer:** The data represents the results of data collection and processing for a specific US Army Corps of Engineers activity and indicates the general existing conditions. The user is responsible for the accuracy, completeness, and reliability of the data for other than its intended purpose. The user is responsible for the accuracy, completeness, and reliability of the data for other than its intended purpose. The user is responsible for the accuracy, completeness, and reliability of the data for other than its intended purpose.

**DISCLAIMER:** The United States Government furnishes this data and the recipient accepts and uses them with the express understanding that the data is provided for informational purposes only. The data is not intended for navigation, and the user is responsible for the accuracy, completeness, and reliability of the data for other than its intended purpose. The user is responsible for the accuracy, completeness, and reliability of the data for other than its intended purpose.

U.S. ARMY CORPS OF ENGINEERS DETROIT DISTRICT		
Submitted By:	Surveyed By:	
Recommended By:	Plotted By:	
Approved:	Chief, Technical Services	

**Cedar River, MI**  
**Cedar River**  
**CE\_01\_DAR\_20200914\_CS**  
**14 September 2020**

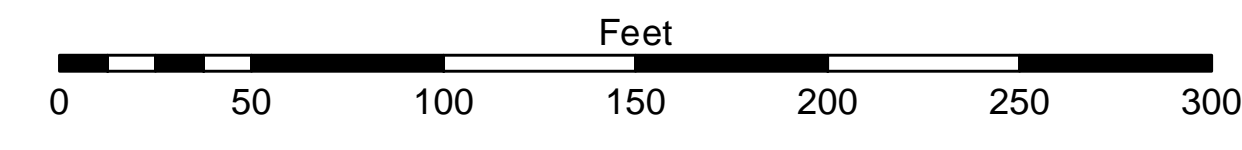
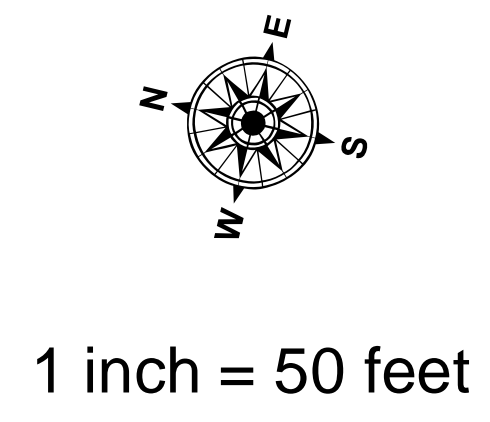


**LEGEND**

- ..... Cable Submarine
- - - Cable Overhead
- Placement Area
- ⊥ Beacon, General
- Contour Lines
- ▭ Channel Limits

**SOUNDING LEGEND**

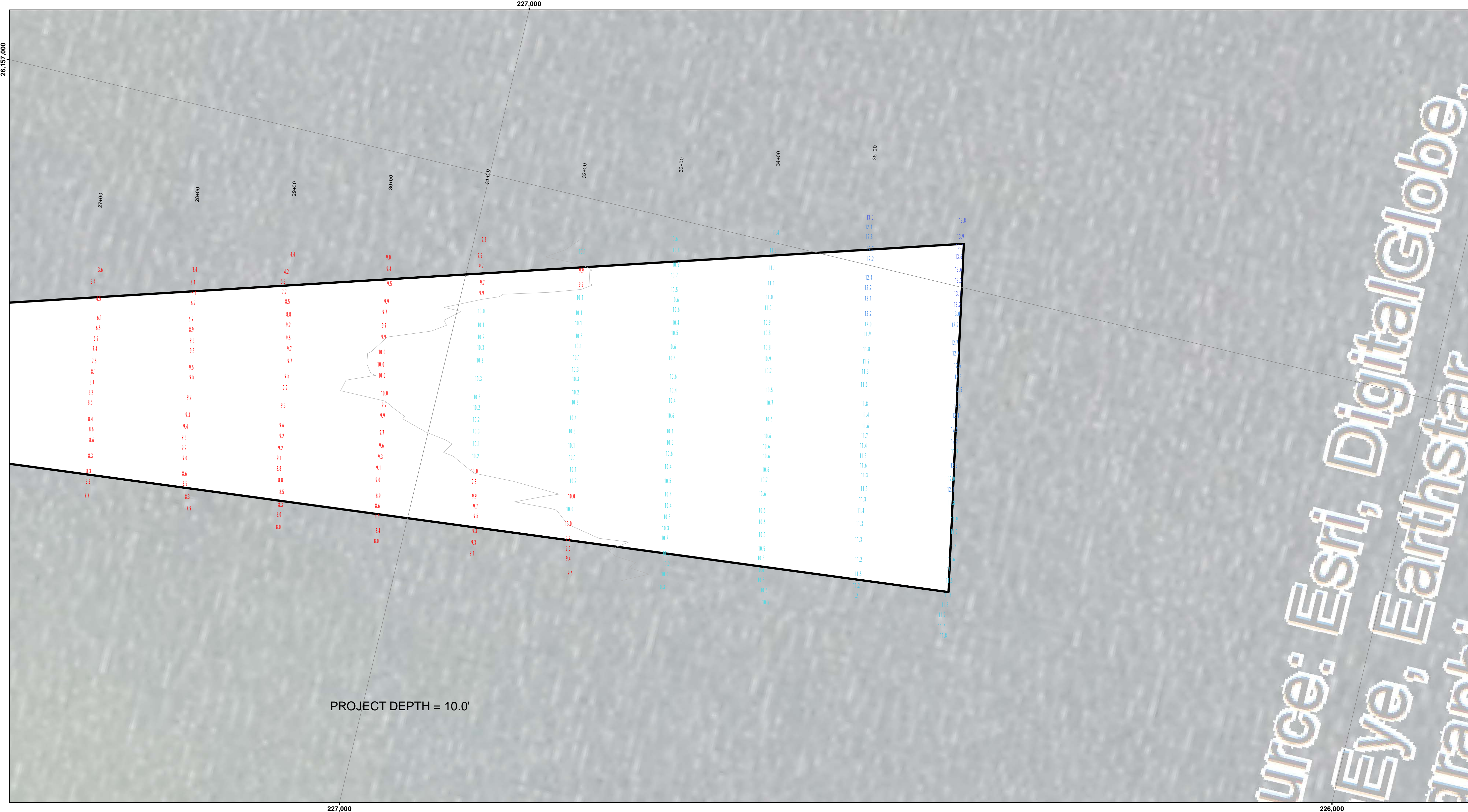
- Red: LESS THAN PROJECT DEPTH
- Light Blue: PROJECT DEPTH
- Medium Blue: PROJECT DEPTH +1'
- Dark Blue: PROJECT DEPTH +2'
- Very Dark Blue: PROJECT DEPTH +3'
- Black: PROJECT DEPTH +4'
- Dark Purple: PROJECT DEPTH +5'



- NOTES:**
1. THE INFORMATION DEPICTED ON THIS MAP REPRESENTS THE RESULTS OF SURVEYS CONDUCTED ON DATE LISTED AND CAN ONLY BE CONSIDERED AS INDICATING THE GENERAL CONDITIONS PRESENT AT THE TIME.
  2. ALL SOUNDINGS ARE IN FEET AND ARE REFERENCED TO LOW WATER DATUM ELEVATION, 577.5 FEET ABOVE MEAN WATER LEVEL AT RIMOUSKI, QUEBEC (INTERNATIONAL GREAT LAKES DATUM 1985). DEPTHS ARE MEASURED USING AN ODOM ECHOTRAC E20 SINGLEBEAM ECHOSOUNDER FOR THE HYDROGRAPHIC SOUNDINGS.
  3. HORIZONTAL POSITIONING IS DETERMINED USING A TRIMBLE SPS461 SUB-METER DGPS RECEIVER FOR HYDROGRAPHIC SOUNDINGS.
  4. GRID COORDINATES ARE BASED ON THE MICHIGAN STATE PLANE COORDINATE SYSTEM, LAMBERT PROJECTION, MICHIGAN NORTH ZONE (2111), NORTH AMERICAN DATUM 1983 (NAD83). ALL COORDINATES SHOWN ARE IN U.S. SURVEY FEET.
  5. THE LOCATION OF NAVIGATION AIDS REPRESENT THEIR GENERAL LOCATION AND CANNOT BE CONSIDERED FOR NAVIGATION.
  6. PROJECT DEPTH FOR THIS AREA IS 8.0' AND 10.0'.
- IMAGERY SOURCE: ESRI

**Sheet Reference Number**  
**2 of 3**



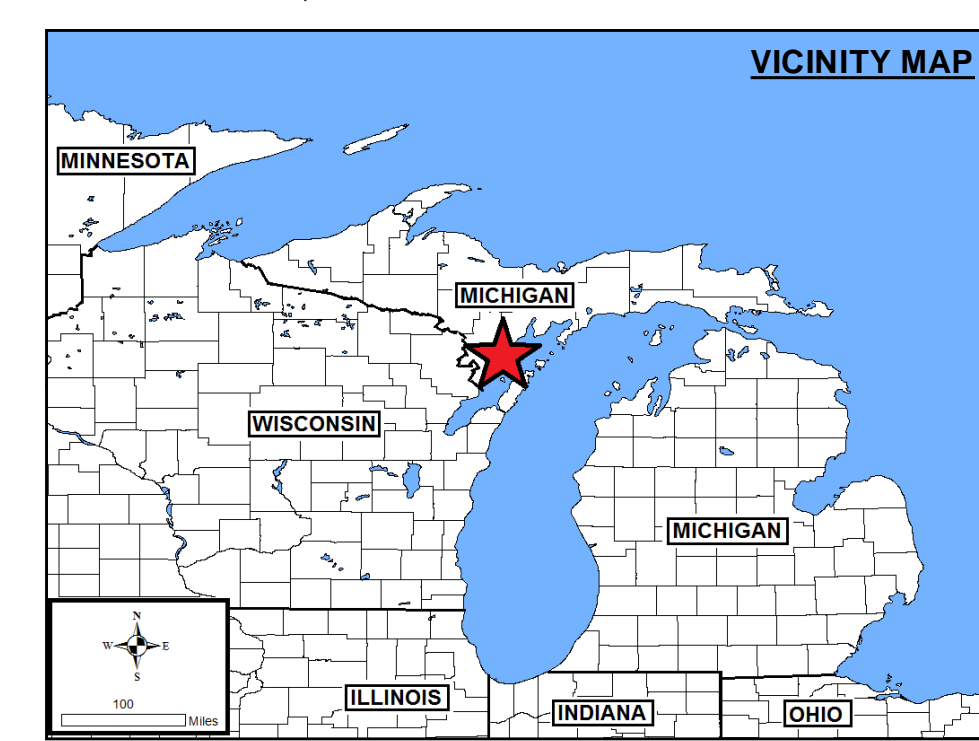
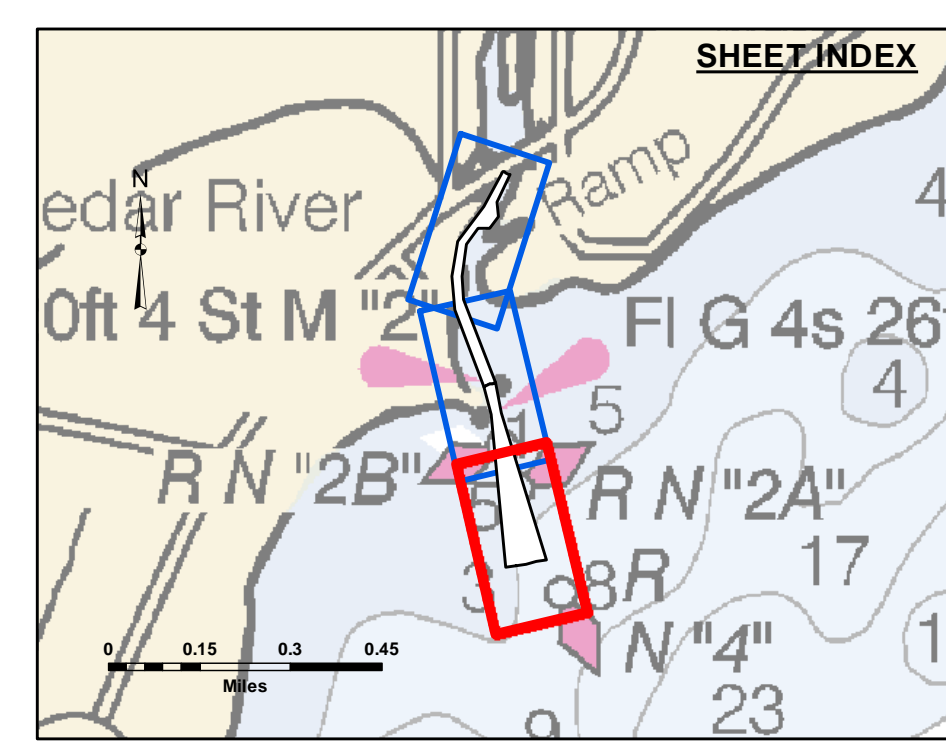


**DISCLAIMER:** The data represents the results of data collection and processing for a specific US Army Corps of Engineers activity and indicates the general existing conditions. The user is responsible for the accuracy, completeness, and reliability of the data for other than its intended purpose. The user is responsible for the accuracy, completeness, and reliability of the data for other than its intended purpose. The user is responsible for the accuracy, completeness, and reliability of the data for other than its intended purpose.

U.S. ARMY CORPS OF ENGINEERS DETROIT DISTRICT		
Submitted:	Surveyed By:	
Recommended:	Plotted By:	
Approved:	Chief, Technical Services	

Cedar River, MI  
Cedar River  
CE\_01\_DAR\_20200914\_CS  
14 September 2020

Sheet Reference Number  
3 of 3

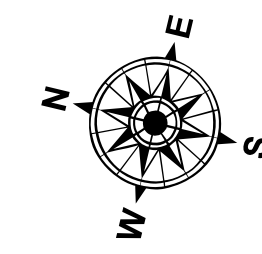


**LEGEND**

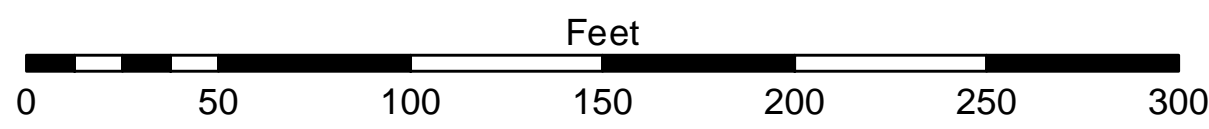
- ..... Cable Submarine
- - - Cable Overhead
- Placement Area
- ⊥ Beacon, General
- Contour Lines
- ▭ Channel Limits

**SOUNDING LEGEND**

- Red: LESS THAN PROJECT DEPTH
- Cyan: PROJECT DEPTH
- Light Green: PROJECT DEPTH +1'
- Green: PROJECT DEPTH +2'
- Dark Green: PROJECT DEPTH +3'
- Blue-Green: PROJECT DEPTH +4'
- Blue: PROJECT DEPTH +5'



1 inch = 50 feet



- NOTES:**
1. THE INFORMATION DEPICTED ON THIS MAP REPRESENTS THE RESULTS OF SURVEYS CONDUCTED ON DATE LISTED AND CAN ONLY BE CONSIDERED AS INDICATING THE GENERAL CONDITIONS PRESENT AT THE TIME.
  2. ALL SOUNDINGS ARE IN FEET AND ARE REFERENCED TO LOW WATER DATUM ELEVATION, 577.5 FEET ABOVE MEAN WATER LEVEL AT RIMOUSKI, QUEBEC (INTERNATIONAL GREAT LAKES DATUM 1985). DEPTHS ARE MEASURED USING AN ODOM ECHOTRAC E20 SINGLEBEAM ECHOSOUNDER FOR THE HYDROGRAPHIC SOUNDINGS.
  3. HORIZONTAL POSITIONING IS DETERMINED USING A TRIMBLE SPS461 SUB-METER DGPS RECEIVER FOR HYDROGRAPHIC SOUNDINGS.
  4. GRID COORDINATES ARE BASED ON THE MICHIGAN STATE PLANE COORDINATE SYSTEM, LAMBERT PROJECTION, MICHIGAN NORTH ZONE (2111), NORTH AMERICAN DATUM 1983 (NAD83). ALL COORDINATES SHOWN ARE IN U.S. SURVEY FEET.
  5. THE LOCATION OF NAVIGATION AIDS REPRESENT THEIR GENERAL LOCATION AND CANNOT BE CONSIDERED FOR NAVIGATION.
  6. PROJECT DEPTH FOR THIS AREA IS 8.0' AND 10.0'.
- IMAGERY SOURCE: ESRI