



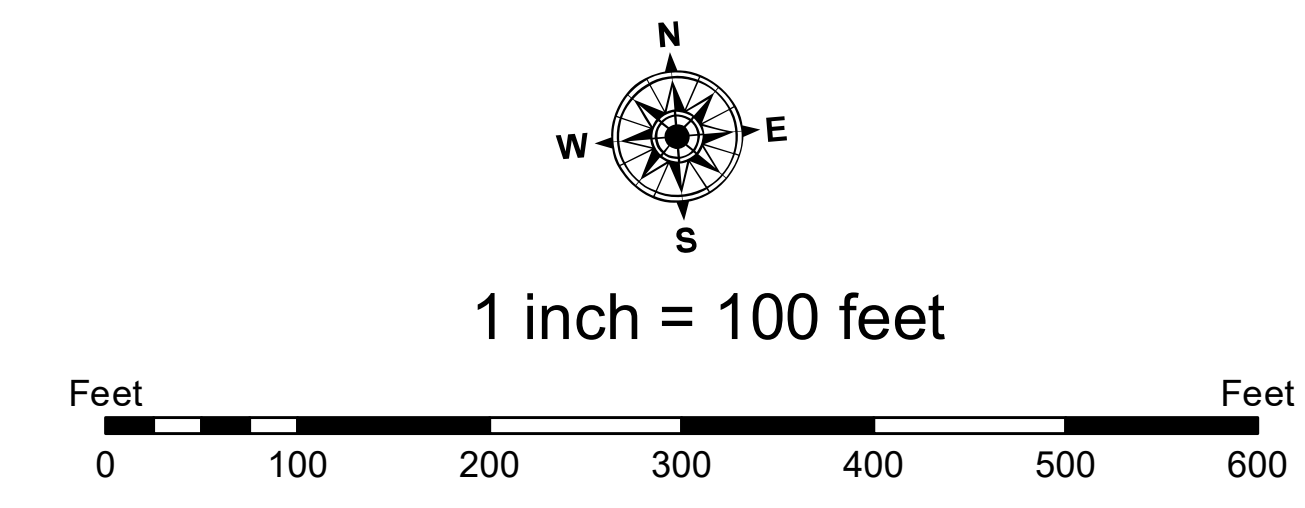
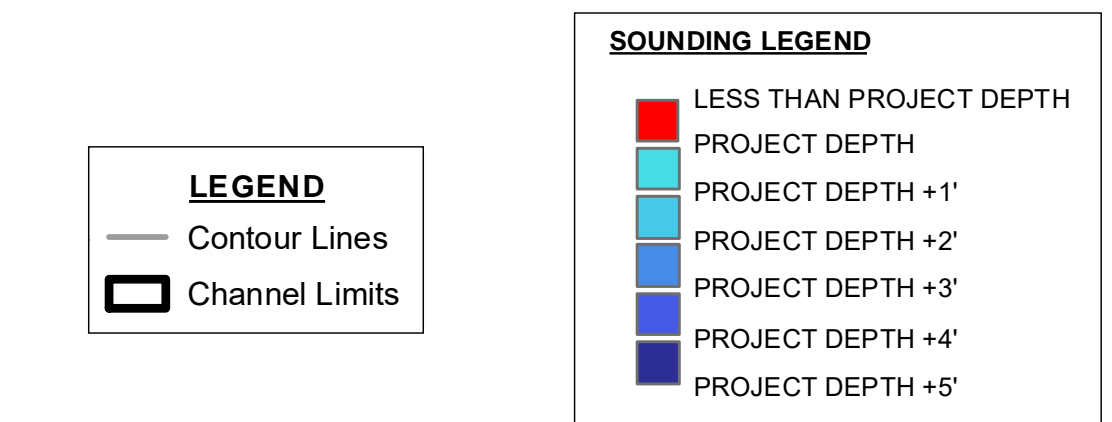
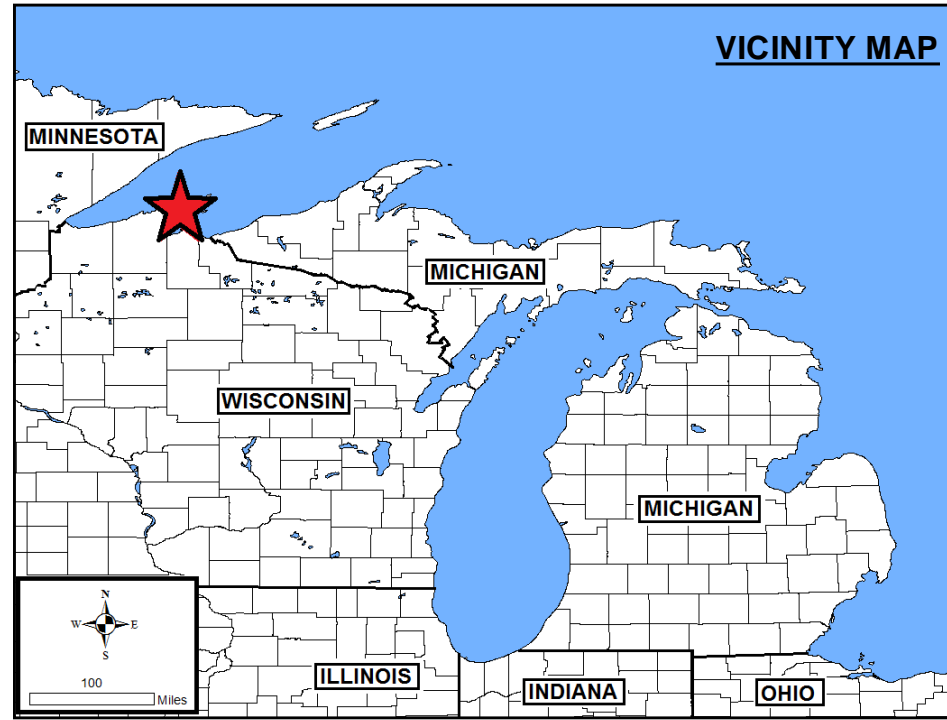
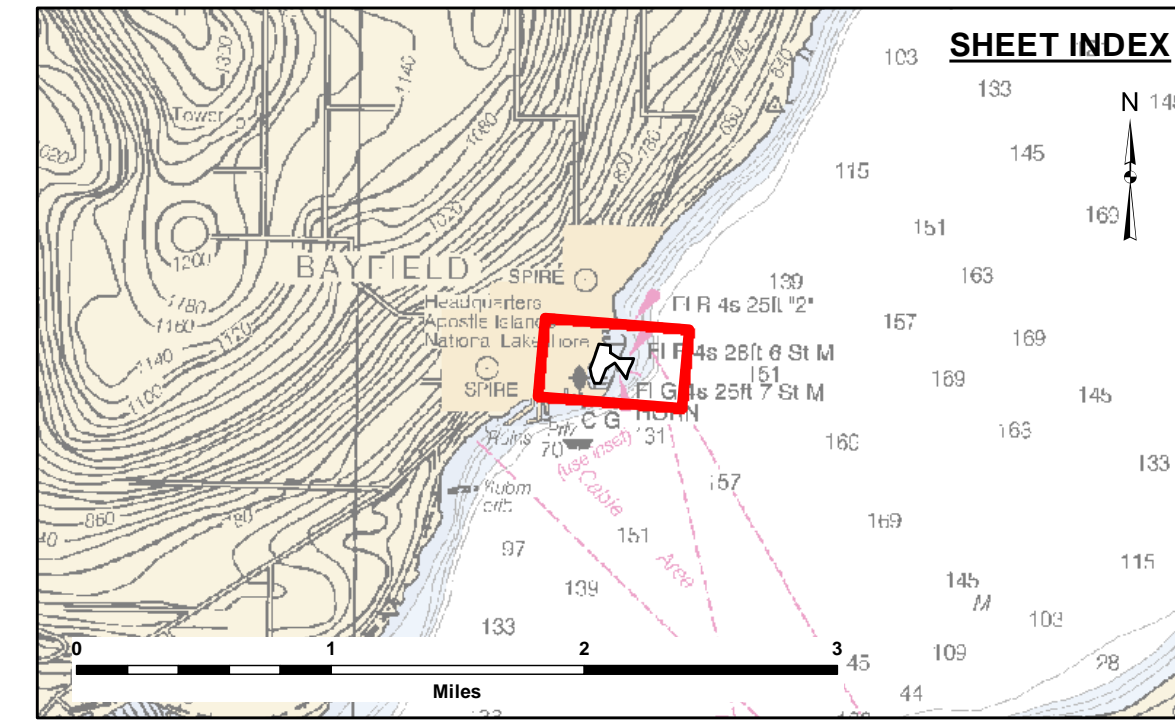
DISCLAIMER: The data represents the results of data collection/processing for a specific US Army Corps of Engineers activity and indicates the general existing conditions, as of the date of collection. The user is responsible for the accuracy, completeness, and reliability of the data for other than its intended purpose.

DISCLAIMER: The United States Government furnishes these data and the recipient accepts and uses them with the express understanding that the Government makes no warranty, expressed, implied, or otherwise, concerning the accuracy, completeness, or reliability of the data for any purpose other than that for which they were prepared. These data belong to the Government. Therefore, the recipient may not transfer, disseminate, or otherwise use these data for purposes other than those intended by the Government without also transferring the Disclaimer.

U.S. ARMY CORPS OF ENGINEERS DETROIT DISTRICT		
Submitted:	Surveyed By:	
Recommended:	Plotted By:	
Approved:	Checked By:	
	Chief, Survey Section	
	Chief, Technical Services	

BAYFIELD HARBOR, WI
 Bayfield Harbor
 BY_01_FLD_20210413_CS
 13 April 2021

Sheet Reference Number
 1 of 1



NOTES:

- 1) THE CHARTED SOUNDINGS REPRESENT THE MINIMUM DEPTH MEASURED AT THE TIME OF THE SURVEY WITHIN THE 10' X 10' AREA CENTERED ON THE TEXT. DERIVED FROM A 1' X 1' AVERAGE DATASET AT CELL CENTER. THIS CHART SHOULD NOT BE USED FOR CHANNEL CLEARANCE OR VOLUME COMPUTATIONS. MINIMUM DEPTH DATA IS PRODUCED FOR STRIKE/SOAL REMOVAL OPERATIONS AND NOTICE TO NAVIGATION INTERESTS.
- 2) ALL SOUNDING DEPTHS ARE REFERENCED TO INTERNATIONAL GREAT LAKES DATUM 1985 (IGLD 85) LOW WATER DATUM ELEVATION 601.1 FEET ABOVE MEAN WATER LEVEL AT RIMOUSKI, QUEBEC. WATER LEVEL READINGS WERE OBTAINED WITH REAL TIME KINEMATIC (RTK) GLOBAL POSITIONING SYSTEM (GPS) VALUES. DEPTHS ARE MEASURED USING AN R2SONIC 2024 MULTIBEAM SONAR.
- 3) HORIZONTAL POSITIONING IS DETERMINED USING REAL TIME KINEMATIC (RTK) GLOBAL NAVIGATION SATELLITE SYSTEM (GNSS) CORRECTIONS FROM A BASE STATION LOCATED AT US ARMY CORPS OF ENGINEERS (USACE) CONTROL POINT 910, A PK NAIL SET NEAR THE NORTHEAST CORNER OF THE PARKING LOT AT THE DNR BOAT RAMP, BAYFIELD, WI. THE GPS RECEIVER IS MANUFACTURED BY APPLANIX MARINE POSIMV VER. 4.0.
- 4) THE GRID COORDINATE SYSTEM IS WISCONSIN STATE PLANE, NORTH ZONE (4801), NORTH AMERICAN DATUM 1983 (NAD83), US SURVEY FOOT.
- 5) THE PROJECT DEPTH FOR THIS AREA IS 10.0'.
- 6) AERIAL PHOTOGRAPHY DATA SOURCE: ESRI