



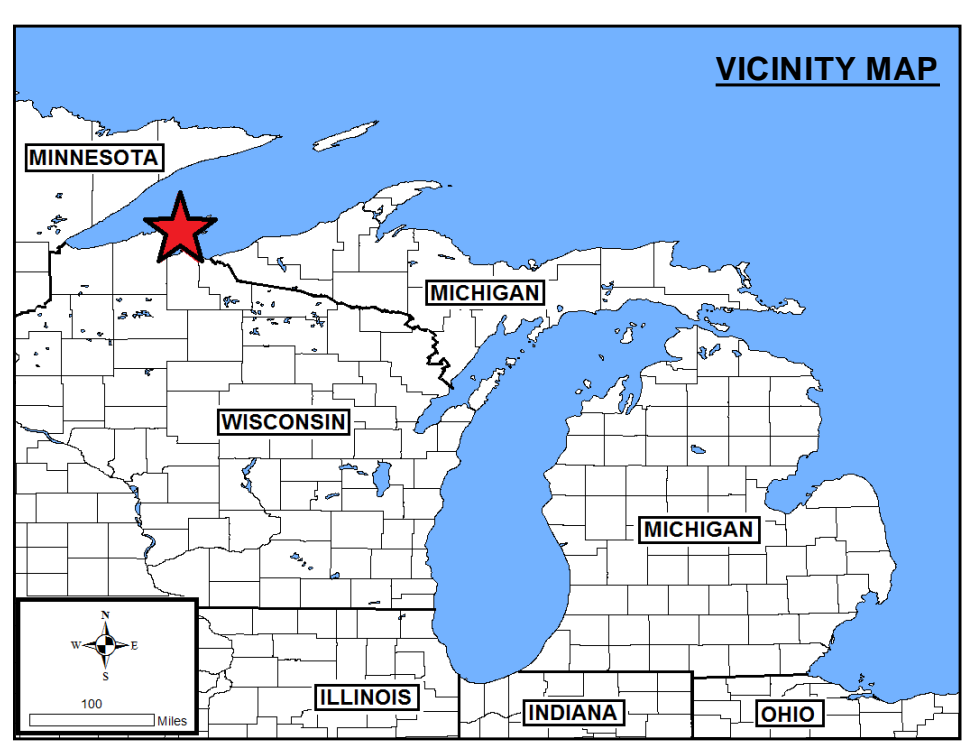
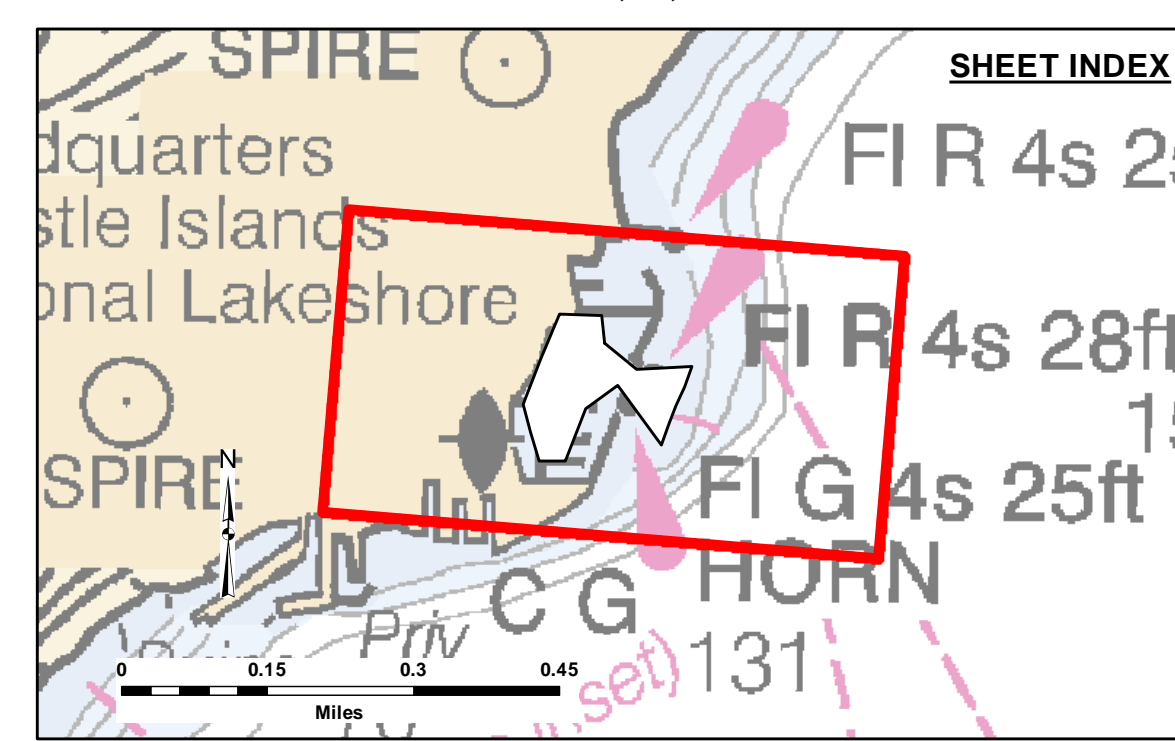
**Disclaimer:** The data represents the results of data collection and processing for a specific US Army Corps of Engineers activity and indicates the general existing conditions. The user is responsible for the accuracy, completeness, and reliability of the data for other than its intended purpose. The user is responsible for the accuracy, completeness, and reliability of the data for other than its intended purpose.

**DISCLAIMER:** The United States Government furnishes this data and the recipient accepts and uses them with the express understanding that the data is provided for informational purposes only. The recipient is responsible for the accuracy, completeness, and reliability of the data for other than its intended purpose. These data belong to the Government. Therefore, the recipient may not transfer, reproduce, or disseminate these data to others without transferring the Disclaimer.

U.S. ARMY CORPS OF ENGINEERS DETROIT DISTRICT		
Submitted:	Surveyed By:	
Recommended:	Plotted By:	
Approved:	Chief, Technical Services	

**BAYFIELD HARBOR, WI**  
**Bayfield Harbor**  
**BY\_01\_FLD\_20201008\_CS**  
**08 October 2020**

**Sheet Reference Number**  
**1 of 1**

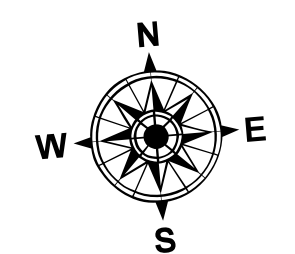


**LEGEND**

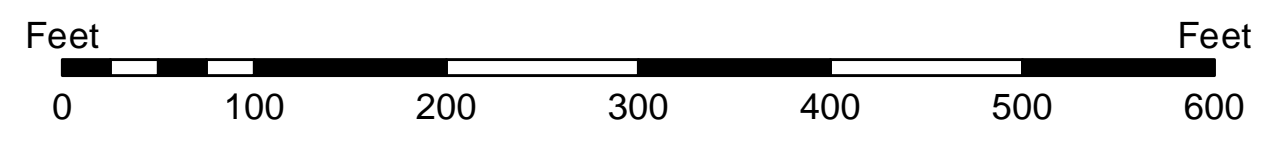
—	Contour Lines
▭	Channel Limits

**SOUNDING LEGEND**

Red	LESS THAN PROJECT DEPTH
Light Blue	PROJECT DEPTH
Light Cyan	PROJECT DEPTH +1'
Medium Cyan	PROJECT DEPTH +2'
Dark Cyan	PROJECT DEPTH +3'
Blue	PROJECT DEPTH +4'
Dark Blue	PROJECT DEPTH +5'



1 inch = 100 feet



**NOTES:**

- 1) THE INFORMATION DEPICTED ON THIS CHART REPRESENTS THE RESULTS OF SURVEYS MADE ON THE DATE INDICATED AND CAN ONLY BE CONSIDERED AS INDICATING THE GENERAL CONDITIONS PRESENT AT THAT TIME.
- 2) SOUNDING DEPTHS ARE REFERENCED TO INTERNATIONAL GREAT LAKES DATUM 1985 (IGLD85) LOW WATER DATUM ELEVATION 601.1 FEET ABOVE MEAN WATER LEVEL AT RIMOUSKI QUEBEC. WATER LEVEL READINGS WERE OBTAINED WITH RTK GPS VALUES. DEPTHS ARE MEASURED USING A ROSS LABS 8258 PORTABLE SURVEY SOUNDER.
- 3) HORIZONTAL POSITIONING IS DETERMINED USING THE REAL TIME KINEMATIC (RTK) GLOBAL NAVIGATION SATELLITE SYSTEM (GNSS). CORRECTIONS ARE FROM A BASE STATION LOCATED AT U.S. ARMY CORPS OF ENGINEERS (USACE) CONTROL POINT 910, A PK NAIL SET IN THE PARKING LOT OF THE BOAT RAMP IN BAYFIELD. THE GPS RECEIVERS ARE MANUFACTURED BY TRIMBLE, MODELS SPA751 AND R10.
- 4) THE GRID COORDINATE SYSTEM SHOWN IS REFERENCED TO THE WISCONSIN STATE PLANE COORDINATE SYSTEM, LAMBERT REJECTION, NORTH ZONE (4801), NORTH AMERICAN DATUM OF 1983 (NAD83), US SURVEY FOOT.
- 5) THE PROJECT DEPTH FOR THIS AREA IS 10.0'.
- 6) 2010 AERIAL PHOTOGRAPHY DATA SOURCE: USGS