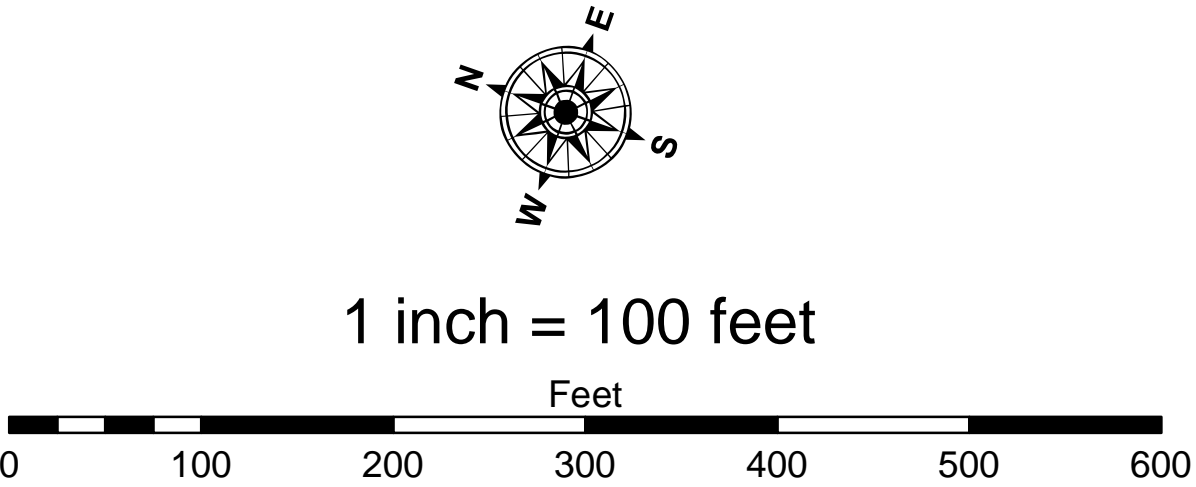


- LEGEND**
- Cable Submarine
 - - Cable Overhead
 - Placement Area
 - Beacon, General
 - Contour Lines
 - Channel_Limits

- SOUNDING LEGEND**
- LESS THAN PROJECT DEPTH
 - PROJECT DEPTH
 - PROJECT DEPTH +1'
 - PROJECT DEPTH +2'
 - PROJECT DEPTH +3'
 - PROJECT DEPTH +4'
 - PROJECT DEPTH +5'



NOTES: THE SOUNDINGS AND ASSOCIATED INFORMATION REPRESENTED HEREIN ARE THE RESULT OF SURVEYS MADE ON THE DATE AS INDICATED AND CAN ONLY BE CONSIDERED REPRESENTATIVE OF THE GENERAL CONDITIONS EXISTING AT THE TIME OF SURVEY.

THE SOUNDINGS DEPICTED HEREIN ARE EXPRESSED IN U.S. SURVEY FEET AND TENTHS THEREOF AND ARE REFERENCED TO THE FOLLOWING DATUMS:
HORIZONTAL: MICHIGAN STATE PLANE COORDINATE SYSTEM, MICHIGAN SOUTH ZONE #2113, NORTH AMERICAN DATUM (NAD) OF 1983.
VERTICAL: INTERNATIONAL GREAT LAKES DATUM (IGLD) OF 1985.

THE ABOVE SURVEY WAS CONDUCTED USING THE U.S.A.C.E. SURVEY LAUNCH #3053 EMPLOYING THE FOLLOWING COMPONENTS:
POSITIONING: APPLANIX POS-MV4, MARINESTAR GNSS
MOTION COMPENSATION: APPLANIX POS-MV4, SONAR: ODOM CV-300
SOFTWARE: HYPACK 2018

TIDE GAGE USED FOR RIVER WERE REFERENCED FROM A CHISELED MARK ON STEEL WALL LOCATED ACROSS FROM BOLLES HARBOR DNR BOAT RAMP, AT APPROXIMATELY C.S. 2+00N, SET OFF NGS B.M. 14DTSRR, PID -- MC0305.

TIDE GAGE USED FOR LAKE WERE DERIVED FROM THE NATIONAL OCEANIC AND ATMOSPHERIC ADMINISTRATION (NOAA) WATER LEVEL STATION(S) AS FOLLOWS: FERRI POWER PLANT, MI (#9063090) L.W.D.-569.2

IMAGERY SOURCED FROM: 2014 MICHIGAN NAIP IMAGERY



DISCLAIMER: The data represents the results of data collection operations for a specific US Army Corps of Engineers activity and indicates the general existing conditions. The data is not intended to be used for any purpose other than the intended purpose. The user is responsible for the results of any application of the data for other than its intended purpose.

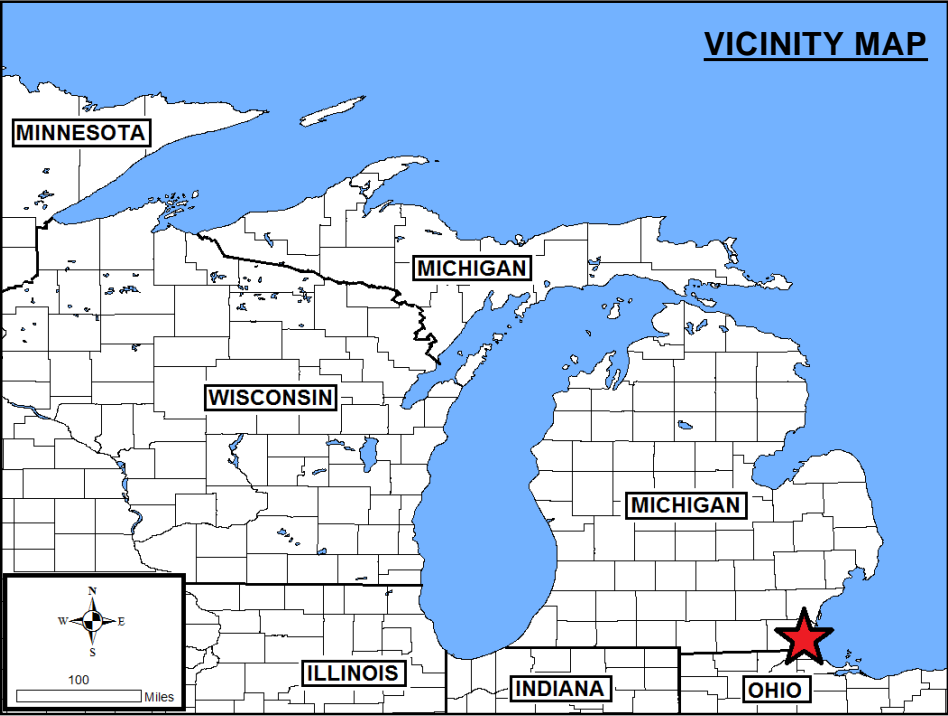
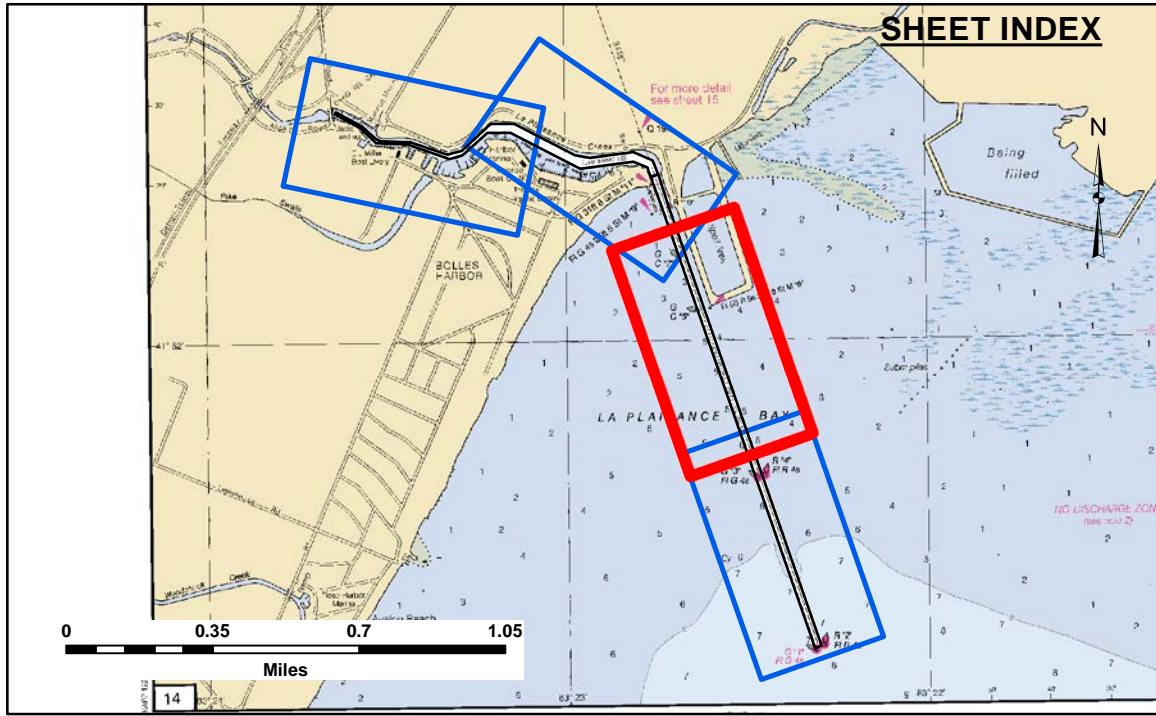
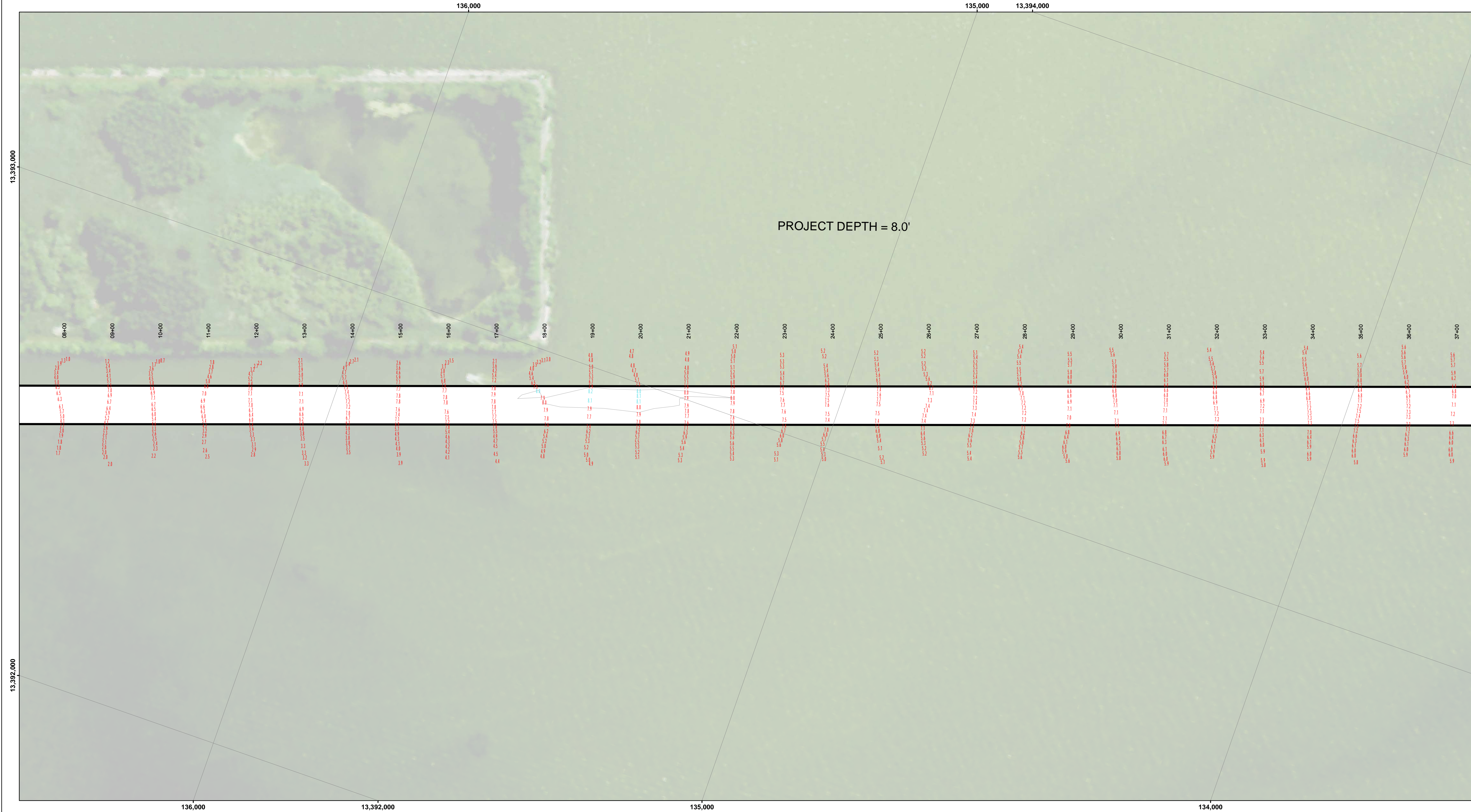
DISCLAIMER: The United States Government furnishes these data and the recipient accepts and uses them with the express understanding that the data are not to be used for any purpose other than the intended purpose. The data are not to be used for any purpose other than the intended purpose. The data are not to be used for any purpose other than the intended purpose.

U.S. ARMY CORPS OF ENGINEERS DETROIT DISTRICT	
Submitted By:	Surveyed By:
Recommended By:	Plotted By:
Approved By:	Checked By:

Bolles Harbor, MI
Bolles Harbor
BO_01_LES_20230413_CS
13 April 2023

Sheet Reference Number
1 of 4

Revision Number:
4.2-20230413



LEGEND

- Cable Submarine
- - Cable Overhead
- Placement Area
- Beacon, General
- Contour Lines
- Channel_Limits

SOUNDING LEGEND

- LESS THAN PROJECT DEPTH
- PROJECT DEPTH
- PROJECT DEPTH +1'
- PROJECT DEPTH +2'
- PROJECT DEPTH +3'
- PROJECT DEPTH +4'
- PROJECT DEPTH +5'

1 inch = 100 feet

Feet

0 100 200 300 400 500 600

NOTES: THE SOUNDINGS AND ASSOCIATED INFORMATION REPRESENTED HEREIN ARE THE RESULT OF SURVEYS MADE ON THE DATE AS INDICATED AND CAN ONLY BE CONSIDERED REPRESENTATIVE OF THE GENERAL CONDITIONS EXISTING AT THE TIME OF SURVEY.

THE SOUNDINGS DEPICTED HEREIN ARE EXPRESSED IN U.S. SURVEY FEET AND TENTHS THEREOF AND ARE REFERENCED TO THE FOLLOWING DATUMS:
HORIZONTAL: MICHIGAN STATE PLANE COORDINATE SYSTEM, MICHIGAN SOUTH ZONE #2113, NORTH AMERICAN DATUM (NAD) OF 1983.
VERTICAL: INTERNATIONAL GREAT LAKES DATUM (IGLD) OF 1985.

THE ABOVE SURVEY WAS CONDUCTED USING THE U.S.A.C.E. SURVEY LAUNCH #3053 EMPLOYING THE FOLLOWING COMPONENTS:
POSITIONING: APPLANIX POS-MV4, MARINESTAR GNSS
MOTION COMPENSATION: APPLANIX POS-MV4, SONAR: ODOM CV-300
SOFTWARE: HYPACK 2018

TIDE GAGE USED FOR RIVER WERE REFERENCED FROM A CHISELED MARK ON STEEL WALL LOCATED ACROSS FROM BOLLES HARBOR DNR BOAT RAMP, AT APPROXIMATELY C.S. 2+00N, SET OFF NGS B.M. 14DTSRR, PID -- MC0305.

TIDE GAGE USED FOR LAKE WERE DERIVED FROM THE NATIONAL OCEANIC AND ATMOSPHERIC ADMINISTRATION (NOAA) WATER LEVEL STATION(S) AS FOLLOWS:
FERMI POWER PLANT, MI (#9063090) L.W.D.-569.2

IMAGERY SOURCED FROM: 2014 MICHIGAN NAIP IMAGERY

U.S. ARMY CORPS OF ENGINEERS DETROIT DISTRICT	
Submitted: _____	Surveyed By: _____
Recommended: _____	Plotted By: _____
Approved: _____	Checked By: _____
Chief, Technical Services	

Bolles Harbor, MI
Bolles Harbor
BO_01_LES_20230413_CS
13 April 2023

Sheet Reference Number
2 of 4

Revision Number:
4.2-20230413

US Army Corps of Engineers
District: CELRE

DISCLAIMER: The data represented by the results of data collection is for informational purposes only. The data is not intended for use in any other manner. The user is responsible for the results of any application of the data for other than its intended purpose. The user is responsible for the results of any application of the data for other than its intended purpose.

DISCLAIMER: The United States Government furnishes these data and the recipient accepts and uses them with the express understanding that the data are not intended for use in any other manner. The user is responsible for the results of any application of the data for other than its intended purpose. The user is responsible for the results of any application of the data for other than its intended purpose.

