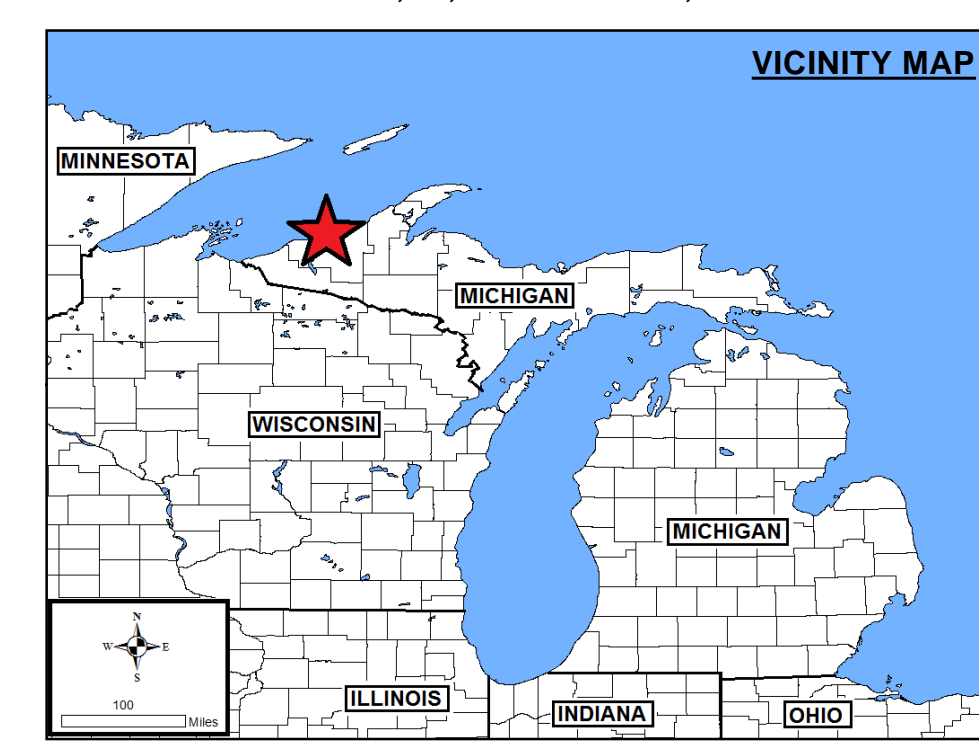
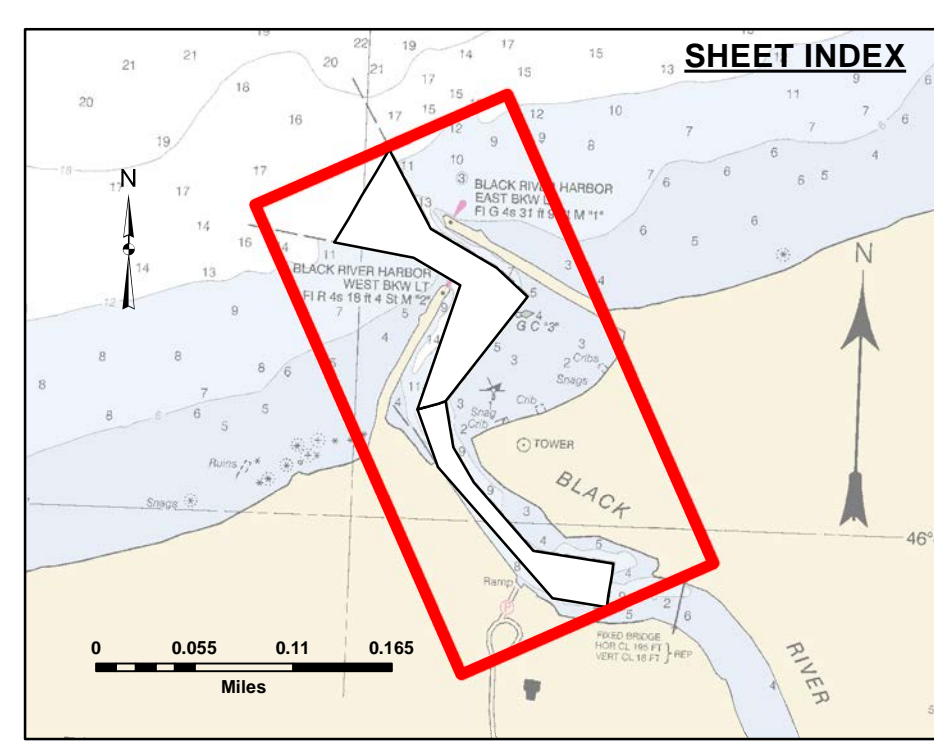


Disclaimer: The data represented on this map is the result of data collection and processing for a specific project. The US Army Corps of Engineers activity and does not constitute a general engineering or surveying activity. The user is responsible for the accuracy and reliability of the data for other than its intended purpose. The US Army Corps of Engineers does not warrant the accuracy, completeness, or reliability of the data for any particular purpose of the user. These data are provided to the user for their use under no liability whatsoever to any person by reason of any use made thereof. These data belong to the Government. Therefore the recipient may not transfer, disseminate, or otherwise use these data to others without also transferring the Disclaimer.

U.S. ARMY CORPS OF ENGINEERS DETROIT DISTRICT		
Submitted:	Surveyed By:	
Recommended:	Plotted By:	
Approved:	Chief, Survey Section	
	Chief, Technical Services	

Black River, Upper Peninsula, MI
Black River (UP)
BK_01_RIV_20230601_CS
01 June 2023

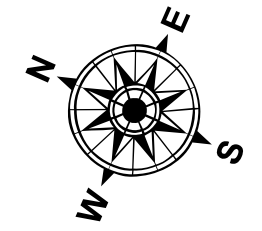


LEGEND

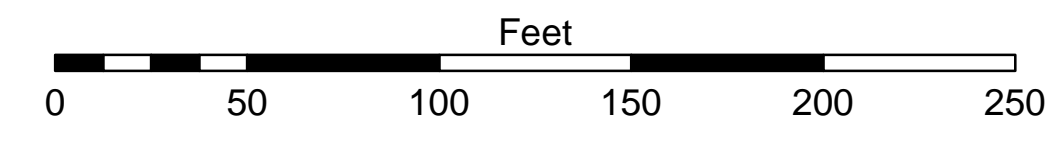
- Cable Submarine
- - - Cable Overhead
- Placement Area
- ⊥ Beacon, General
- Contour Lines
- ▭ Channel_Limits

SOUNDING LEGEND

- LESS THAN PROJECT DEPTH
- PROJECT DEPTH
- PROJECT DEPTH +1'
- PROJECT DEPTH +2'
- PROJECT DEPTH +3'
- PROJECT DEPTH +4'
- PROJECT DEPTH +5'



1 inch = 50 feet



NOTES:

- 1) THE INFORMATION DEPICTED ON THIS MAP REPRESENTS THE RESULTS OF SURVEYS MADE ON THE DATE INDICATED AND CAN ONLY BE CONSIDERED AS INDICATING THE GENERAL CONDITIONS PRESENT AT THAT TIME.
- 2) SOUNDING DEPTHS ARE REFERENCED TO INTERNATIONAL GREAT LAKES DATUM 1985 (IGLD85) LOW WATER DATUM ELEVATION 801.1 FEET ABOVE MEAN WATER LEVEL AT RIMOUSKI, QUEBEC. WATER LEVEL READINGS WERE OBTAINED WITH RTK GPS VALUES. DEPTHS ARE MEASURED USING A TELEDYNE ECHOTRAC E20 PORTABLE SURVEY SOUNDER.
- 3) HORIZONTAL POSITIONING IS DETERMINED USING THE REAL TIME KINEMATIC (RTK) GLOBAL NAVIGATION SATELLITE SYSTEM (GNSS). CORRECTIONS ARE FROM A BASE STATION LOCATED AT USACE CONTROL POINT 1311. THE GPS RECEIVERS ARE MANUFACTURED BY TRIMBLE, MODELS SPA751 AND R10.
- 4) THE GRID COORDINATE SYSTEM IS MICHIGAN STATE PLANE, NORTH ZONE (2111), NORTH AMERICAN DATUM 1983 (NAD83), US SURVEY FOOT.
- 5) THE PROJECT DEPTHS FOR THIS AREA ARE 8.0' AND 12.0'.

IMAGERY SOURCED : ESRI

Sheet Reference Number
1 of 1