

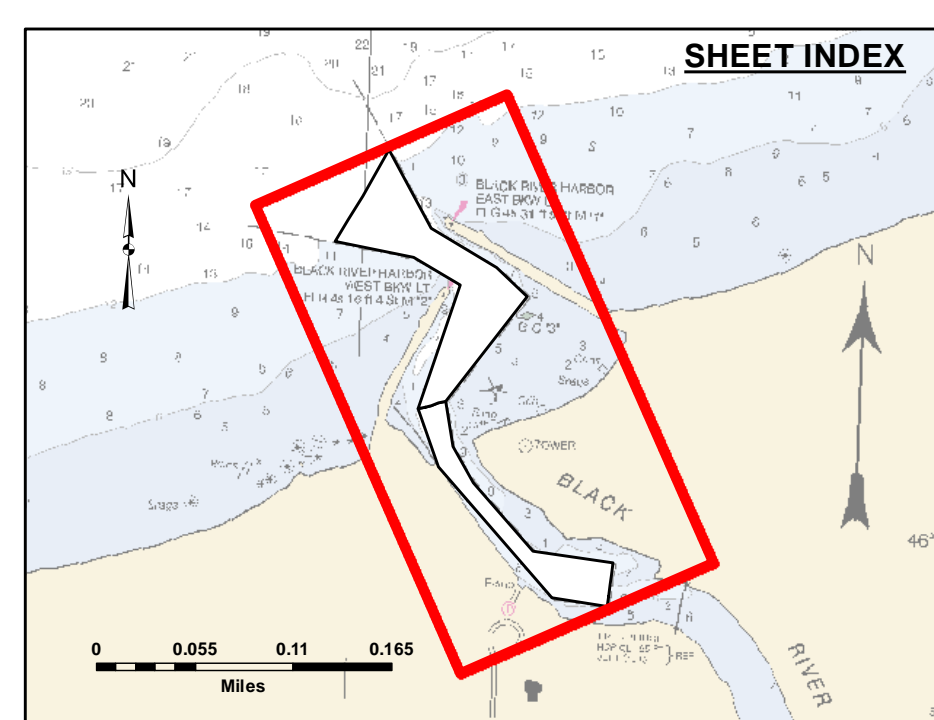


DISCLAIMER: The data represents the results of data collection/processing for a specific US Army Corps of Engineers activity and indicates the general existing conditions. Engineers are advised to verify the accuracy, completeness, reliability, usability, or suitability for any particular purpose of the data before using it. The user is responsible for the results of any of the application of the data for other than its intended purpose.

ACCESS CONSTRAINTS: The United States Government furnishes this data and the recipient accepts and uses them with the express understanding that the data is provided for informational purposes only, and is not to be used for any purpose other than that for which it was intended. These data belong to the Government. Therefore the recipient may not transfer, disseminate, or otherwise use these data for other than the intended purpose without the prior written approval of the Chief, Technical Services.

| | | |
|--|---------------------------|--|
| U.S. ARMY CORPS OF ENGINEERS DETROIT DISTRICT | | |
| Submitted: | Surveyed By: | |
| Recommended: | Plotted By: | |
| Approved: | Chief, Survey Section | |
| | Chief, Technical Services | |

**Black River, Upper Peninsula, MI
Black River (UP)
BK_01_RV_20220526_CS
26 May 2022**

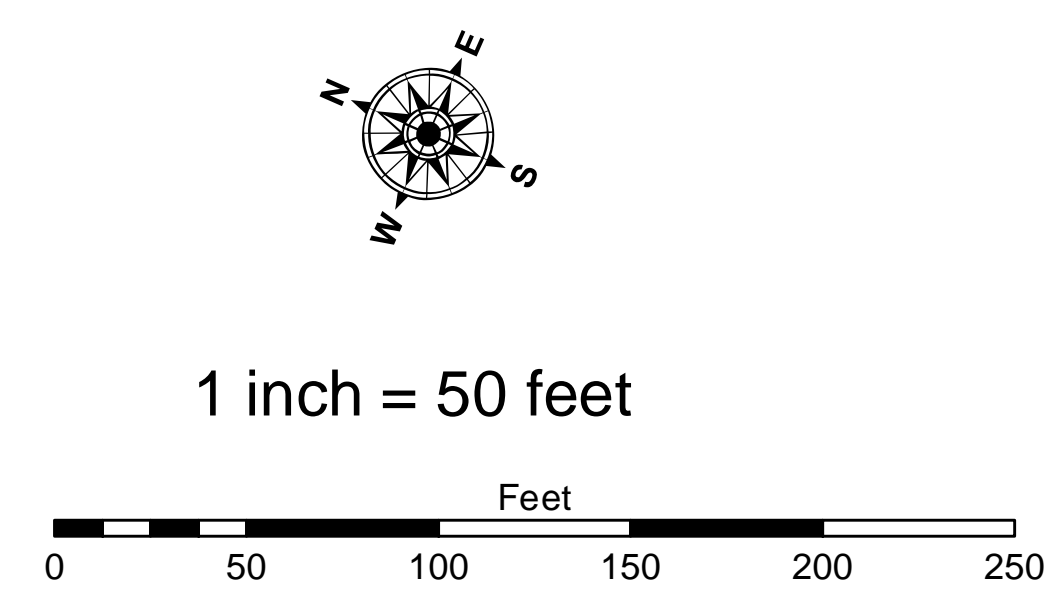


LEGEND

- Cable Submarine
- Cable Overhead
- Placement Area
- ⊥ Beacon, General
- Contour Lines
- ▭ Channel_Limits

SOUNDING LEGEND

- LESS THAN PROJECT DEPTH
- PROJECT DEPTH
- PROJECT DEPTH +1'
- PROJECT DEPTH +2'
- PROJECT DEPTH +3'
- PROJECT DEPTH +4'
- PROJECT DEPTH +5'



NOTES:

- 1) THE INFORMATION DEPICTED ON THIS MAP REPRESENTS THE RESULTS OF SURVEYS MADE ON THE DATE INDICATED AND CAN ONLY BE CONSIDERED AS INDICATING THE GENERAL CONDITIONS PRESENT AT THAT TIME.
- 2) SOUNDING DEPTHS ARE REFERENCED TO INTERNATIONAL GREAT LAKES DATUM 1985 (IGLD85) LOW WATER DATUM ELEVATION 801.1 FEET ABOVE MEAN WATER LEVEL AT RIMOUSKI, QUEBEC. WATER LEVEL READINGS WERE OBTAINED WITH RTK GPS VALUES. DEPTHS ARE MEASURED USING A TELEDYNE ECHOTRAC E20 PORTABLE SURVEY SOUNDER.
- 3) HORIZONTAL POSITIONING IS DETERMINED USING THE REAL TIME KINEMATIC (RTK) GLOBAL NAVIGATION SATELLITE SYSTEM (GNSS). CORRECTIONS ARE FROM A BASE STATION LOCATED AT USACE CONTROL POINT 1309. THE GPS RECEIVERS ARE MANUFACTURED BY TRIMBLE, MODELS SPA751 AND R10.
- 4) THE GRID COORDINATE SYSTEM IS MICHIGAN STATE PLANE, NORTH ZONE (2111), NORTH AMERICAN DATUM 1983 (NAD83), US SURVEY FOOT.
- 5) THE PROJECT DEPTHS FOR THIS AREA ARE 8.0' AND 12.0'.

IMAGERY SOURCED : ESRI

**Sheet Reference Number
1 of 1**