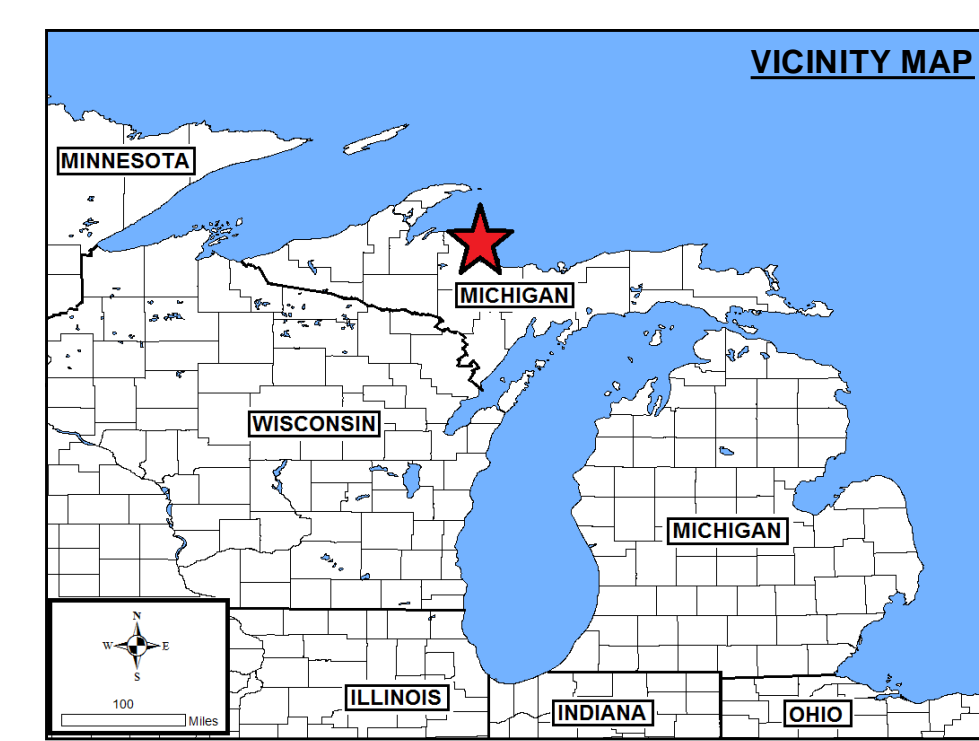
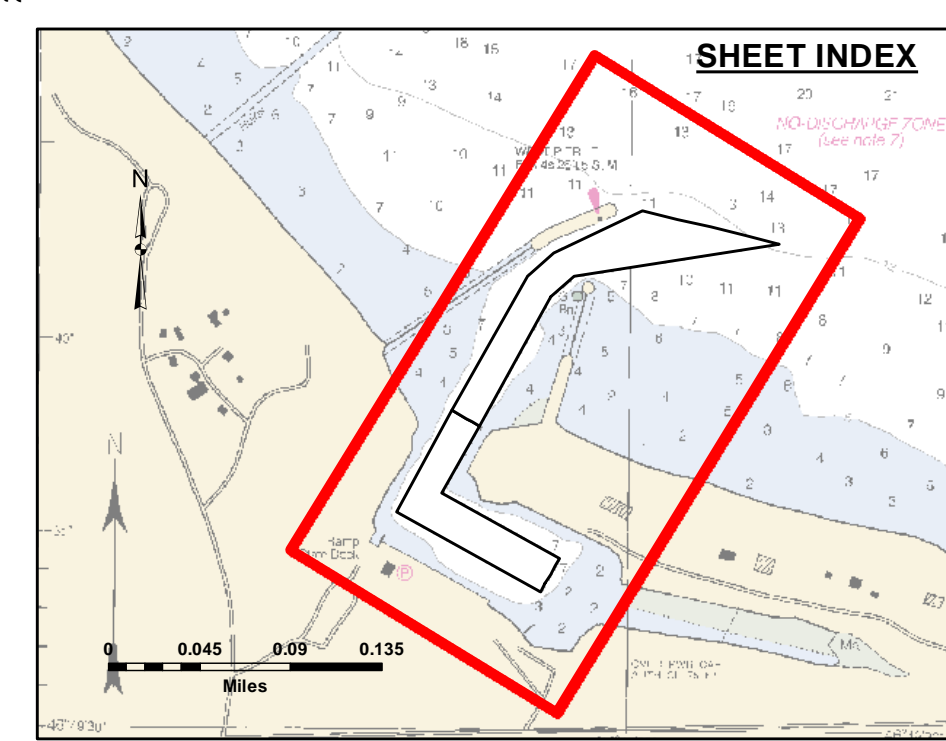


**DISCLAIMER:** The data represented by the results of data collection and processing for a specific US Army Corps of Engineers activity and includes the general existing conditions, as shown on this map, are not intended to be used for any purpose other than that for which they were collected. The user is responsible for the accuracy, reliability, usability, or suitability for any particular purpose of the data. The user is responsible for the accuracy, reliability, usability, or suitability for any particular purpose of the data. The user is responsible for the accuracy, reliability, usability, or suitability for any particular purpose of the data. The user is responsible for the accuracy, reliability, usability, or suitability for any particular purpose of the data.

U.S. ARMY CORPS OF ENGINEERS DETROIT DISTRICT		
Submitted:	Surveyed By:	
Recommended:	Plotted By:	
Approved:	Chief, Survey Section	
	Chief, Technical Services	

**Big Bay Harbor, MI**  
**Big Bay Harbor**  
**BG\_01\_BAY\_20230531\_CS**  
**31 May 2023**

**Sheet Reference Number**  
**1 of 1**

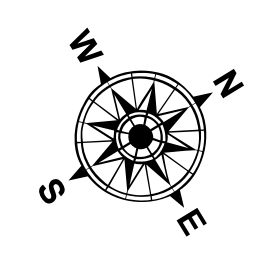


**LEGEND**

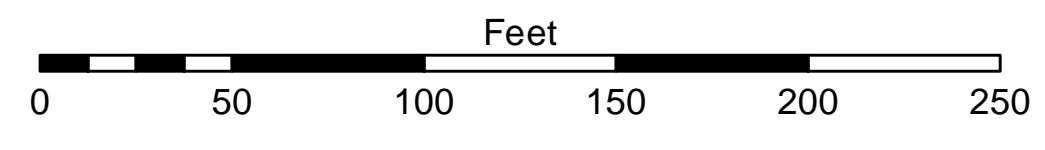
- ..... Cable Submarine
- - - Cable Overhead
- Placement Area
- ⊥ Beacon, General
- Contour Lines
- ▭ Channel\_Limits

**SOUNDING LEGEND**

- Red: LESS THAN PROJECT DEPTH
- Light Blue: PROJECT DEPTH
- Medium Blue: PROJECT DEPTH +1'
- Dark Blue: PROJECT DEPTH +2'
- Very Dark Blue: PROJECT DEPTH +3'
- Black: PROJECT DEPTH +4'
- Dark Purple: PROJECT DEPTH +5'



1 inch = 50 feet



- NOTES:**
- 1) THE INFORMATION DEPICTED ON THIS MAP REPRESENTS THE RESULTS OF SURVEYS MADE ON THE DATE INDICATED AND CAN ONLY BE CONSIDERED AS INDICATING THE GENERAL CONDITIONS PRESENT AT THAT TIME.
  - 2) SOUNDING DEPTHS ARE REFERENCED TO INTERNATIONAL GREAT LAKES DATUM 1985 (IGLD85) LOW WATER DATUM ELEVATION 601.1 FEET ABOVE MEAN WATER LEVEL AT RIMOUSKI, QUEBEC. WATER LEVEL READINGS WERE OBTAINED WITH RTK GPS VALUES. DEPTHS ARE MEASURED USING A TELEDYNE ECHOTRAC E20 PORTABLE SURVEY SOUNDER.
  - 3) HORIZONTAL POSITIONING IS DETERMINED USING THE REAL TIME KINEMATIC (RTK) GLOBAL NAVIGATION SATELLITE SYSTEM (GNSS). CORRECTIONS ARE FROM A BASE STATION LOCATED AT USACE CONTROL POINT 2000. THE GPS RECEIVERS ARE MANUFACTURED BY TRIMBLE, MODEL SPS751 AND R10.
  - 4) THE GRID COORDINATE SYSTEM SHOWN IS REFERENCED TO THE MICHIGAN STATE PLANE COORDINATE SYSTEM, LAMBERT PROJECTION, NORTH ZONE (2111), NORTH AMERICAN DATUM 1983 (NAD 83), US SURVEY FOOT.
  - 5) THE PROJECT DEPTHS FOR THIS AREA ARE 10.0' AND 12.0'.
  - 6) IMAGERY SOURCED : ESRI