



**DISCLAIMER:** The United States Government furnishes these data and the recipient accepts and uses them with the express understanding that the data are not to be used for any purpose other than that for which they were provided. The recipient may not transfer these data to others without also transferring the Disclaimer.

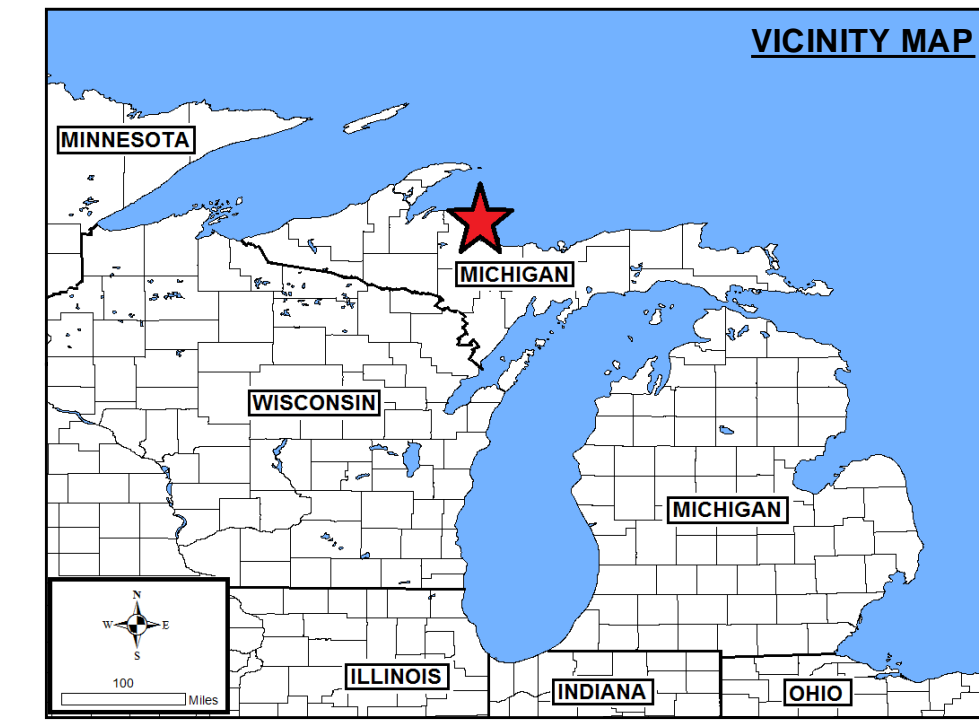
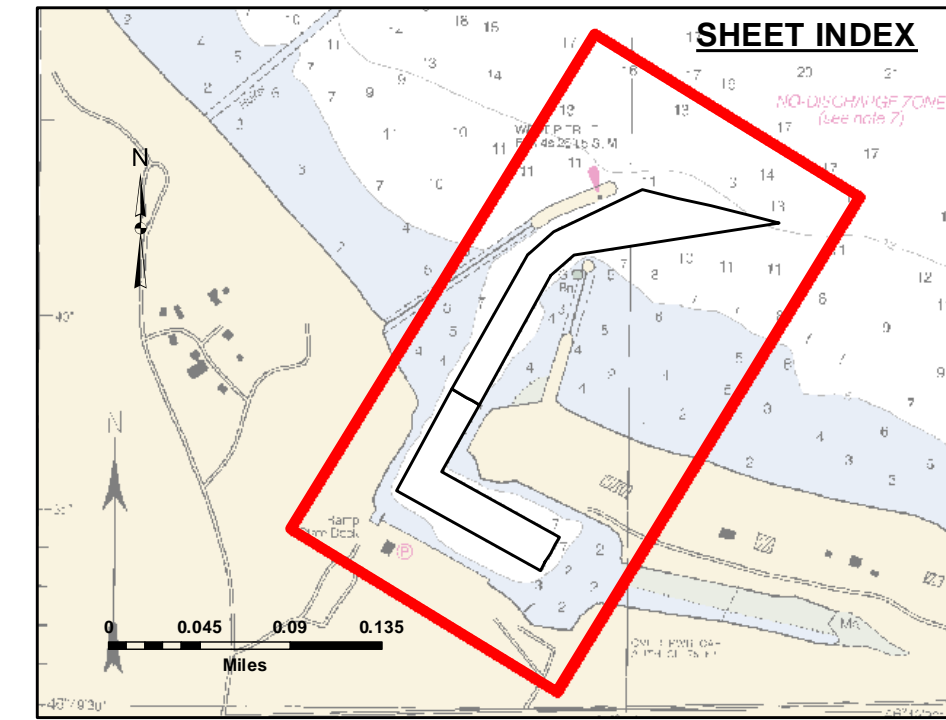
**Access Constraints:** The United States Government furnishes these data and the recipient accepts and uses them with the express understanding that the data are not to be used for any purpose other than that for which they were provided. The recipient may not transfer these data to others without also transferring the Disclaimer.

**Reliability, Usability, or Availability:** The United States Government does not warrant the accuracy, completeness, or reliability, usability, or availability of the data for any purpose other than that for which they were provided. The recipient may not transfer these data to others without also transferring the Disclaimer.

U.S. ARMY CORPS OF ENGINEERS DETROIT DISTRICT		
Submitted:	Surveyed By:	
Recommended:	Plotted By:	
Approved:	Checked By:	
	Chief, Survey Section	
	Chief, Technical Services	

**Big Bay Harbor, MI**  
**Big Bay Harbor**  
**BG\_01\_BAY\_20201030\_CS**  
**30 October 2020**

**Sheet Reference Number**  
**1 of 1**

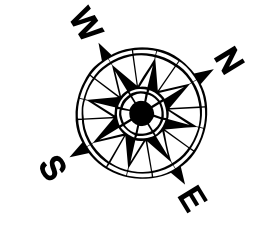


**LEGEND**

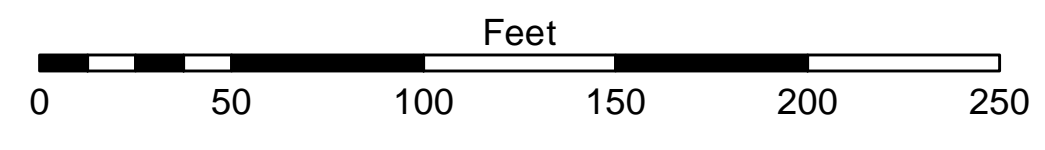
- ..... Cable Submarine
- - - Cable Overhead
- Placement Area
- ⌊ Beacon, General
- Contour Lines
- ▭ Channel Limits

**SOUNDING LEGEND**

- LESS THAN PROJECT DEPTH
- PROJECT DEPTH
- PROJECT DEPTH +1'
- PROJECT DEPTH +2'
- PROJECT DEPTH +3'
- PROJECT DEPTH +4'
- PROJECT DEPTH +5'



1 inch = 50 feet



**NOTES:**

- 1) THE INFORMATION DEPICTED ON THIS MAP REPRESENTS THE RESULTS OF SURVEYS MADE ON THE DATE INDICATED AND CAN ONLY BE CONSIDERED AS INDICATING THE GENERAL CONDITIONS PRESENT AT THAT TIME.
- 2) SOUNDING DEPTHS ARE REFERENCED TO INTERNATIONAL GREAT LAKES DATUM 1985 (IGLD85) LOW WATER DATUM ELEVATION 60.1 FEET ABOVE MEAN WATER LEVEL AT FIMOUSKI QUEBEC. WATER LEVEL READINGS WERE OBTAINED WITH RTK GPS VALUES. DEPTHS ARE MEASURED USING A ROSS LABS 825C PORTABLE SURVEY SOUNDER.
- 3) HORIZONTAL POSITIONING IS DETERMINED USING THE REAL TIME KINEMATIC (RTK) GLOBAL NAVIGATION SATELLITE SYSTEM (GNSS). CORRECTIONS ARE FROM A BASE STATION LOCATED AT USACE CONTROL POINT 2000. THE GPS RECEIVERS ARE MANUFACTURED BY TRIMBLE, MODELS SPAT51 AND R10.
- 4) THE GRID COORDINATE SYSTEM SHOWN IS REFERENCED TO THE MICHIGAN STATE PLANE COORDINATE SYSTEM, LAMBERT PROJECTION, NORTH ZONE (211), NORTH AMERICAN DATUM 1983 (NAD 83), US SURVEY FOOT.
- 5) THE PROJECT DEPTHS FOR THIS AREA ARE 10.0' AND 12.0'.
- 6) IMAGERY SOURCED : ESRI