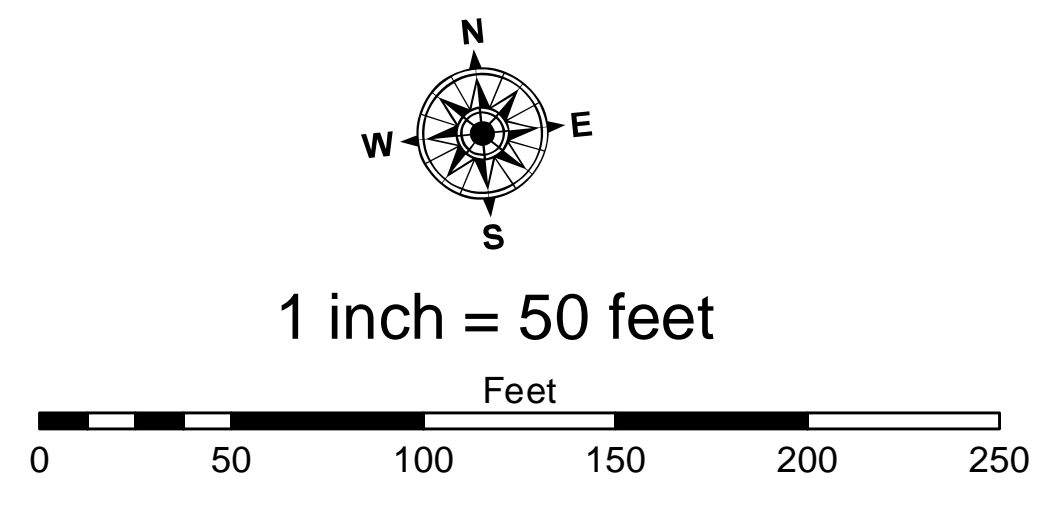


- LEGEND**
- Cable Submarine
 - - - Cable Overhead
 - ▭ Channel Limits
 - ⊥ Beacon, General
 - Contour Lines

- SOUNDING LEGEND**
- LESS THAN PROJECT DEPTH
 - PROJECT DEPTH
 - PROJECT DEPTH +1'
 - PROJECT DEPTH +2'
 - PROJECT DEPTH +3'
 - PROJECT DEPTH +4'
 - PROJECT DEPTH +5'



NOTES: THE INFORMATION DEPICTED ON THIS MAP REPRESENTS THE RESULTS OF THE SURVEYS MADE ON THE DATES INDICATED AND CAN ONLY BE CONSIDERED AS INDICATING THE GENERAL CONDITIONS EXISTING AT THAT TIME.

ALL DEPTHS AND PROJECT DEPTHS ARE REFERRED TO LOW WATER DATUM ELEVATION 577.5 FT. I.G.L.D. 1985.

GRIDS SHOWN ARE BASED ON THE NATIONAL GEODETIC SURVEY PROJECTION TABLES, STATE OF MICHIGAN, CENTRAL ZONE (2112), LAMBERT PROJECTION, 1983 NORTH AMERICAN DATUM, US SURVEY FOOT.

POSITIONING METHOD: APPLANIX POS MV WMARINESTAR GNSS OR VRS RTK MOTION COMPENSATION: APPLANIX POS MV MRU
EQUIPMENT: MULTIBEAM-F2 SONIC 2024; SINGLEBEAM-ODOM CV 300

VERTICAL WATER LEVEL READINGS WERE TAKEN FROM A PAINT MARK ON ANGLE IRON MOUNT FOR A WOODEN POST NEAR BOAT LAUNCH LABELED 'TBM POST'

2010 AERIAL PHOTOGRAPHY DATA SOURCE: USGS

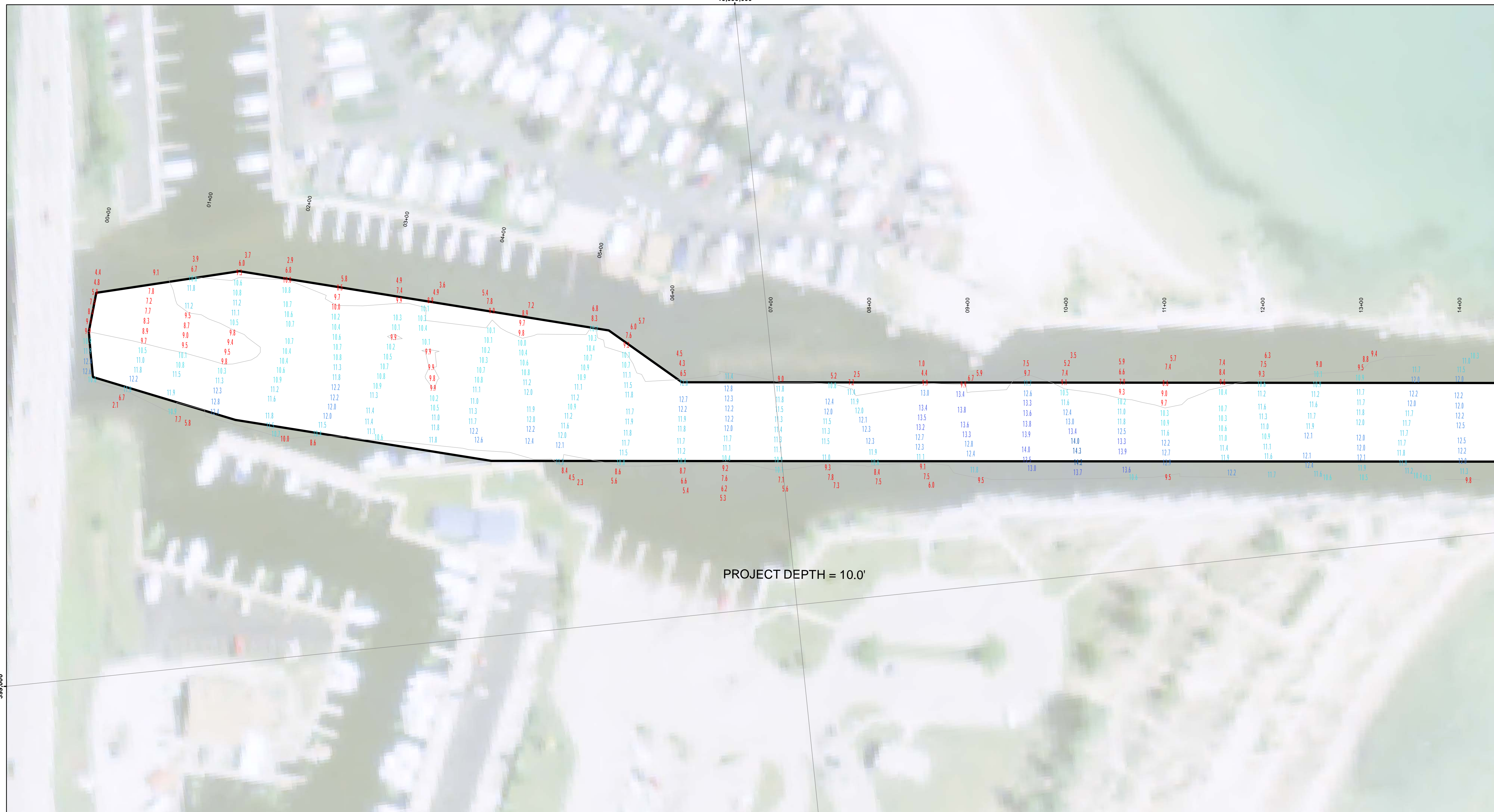


DISCLAIMER: The United States Government furnishes these data and the recipient accepts and uses them with the express understanding that the United States Government makes no warranty, expressed, or implied concerning the accuracy, completeness, reliability, usability, or suitability for any particular purpose of the data. The United States Government shall not be liable for any use of the data for other than its intended purpose. The recipient may not transfer these data to others without also transferring this disclaimer.

U.S. ARMY CORPS OF ENGINEERS DETROIT DISTRICT		
Submitted:	Surveyed By:	
Recommended:	Plotted By:	
Approved:	Chief, Survey Section	
	Chief, Technical Services	

Ausable Harbor, MI
Ausable Harbor
AU_01_SBL_20230718_CS
18 July 2023

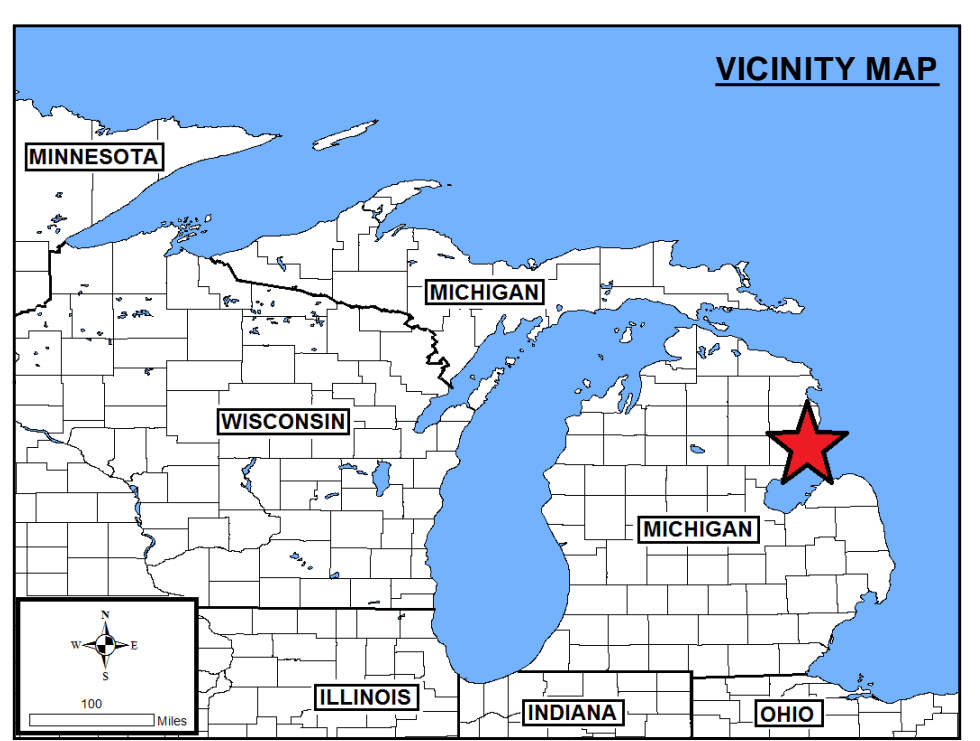
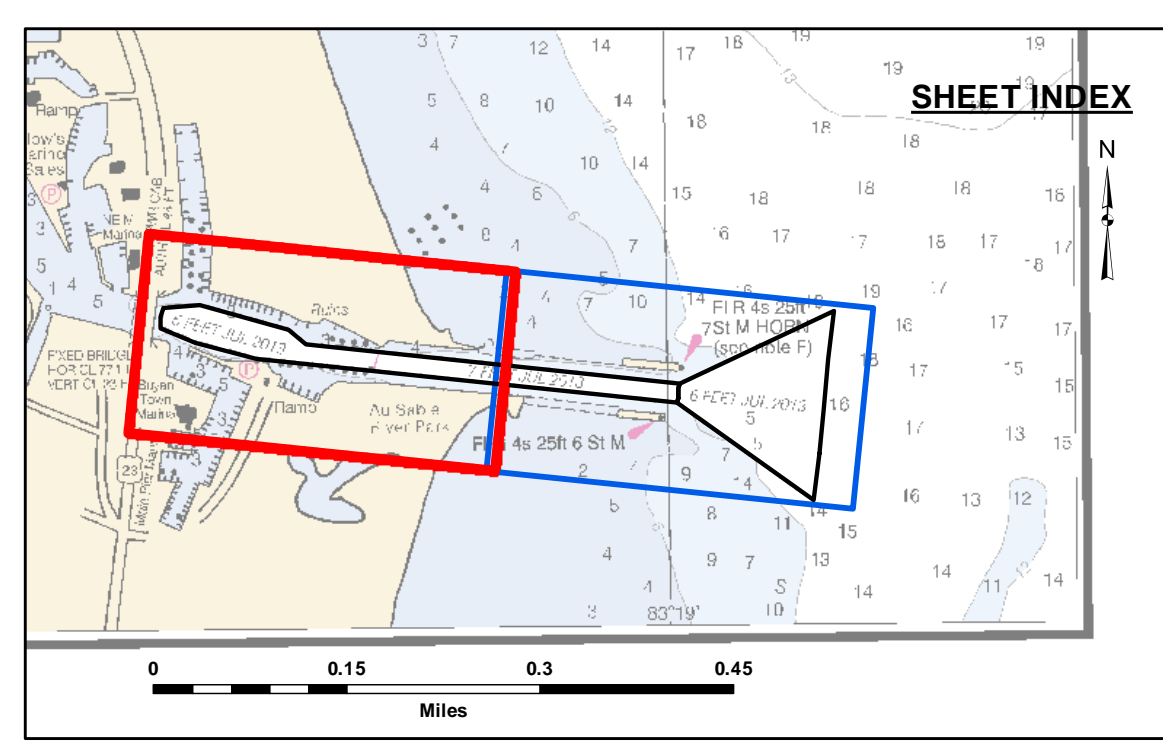
Sheet Reference Number
1 of 2



DISCLAIMER: The data represents the results of data collection/processing for a specific US Army Corps of Engineers activity and indicates the general existing conditions. The user is responsible for the accuracy, completeness, and reliability of the data for other than its intended purpose. The user is responsible for the accuracy, completeness, and reliability of the data for other than its intended purpose. The user is responsible for the accuracy, completeness, and reliability of the data for other than its intended purpose. The user is responsible for the accuracy, completeness, and reliability of the data for other than its intended purpose.

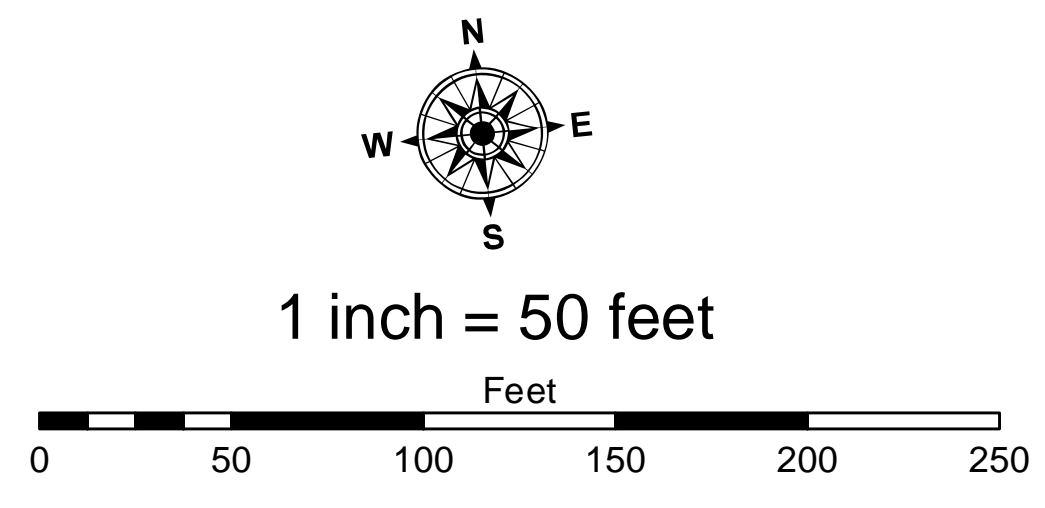
U.S. ARMY CORPS OF ENGINEERS DETROIT DISTRICT		
Submitted By:	Surveyed By:	
Recommended By:	Plotted By:	
Approved By:	Checked By:	

AuSable Harbor, MI
AuSable Harbor
AU_01_SBL_20230718_CS
18 July 2023



- LEGEND**
- Cable Submarine
 - - - Cable Overhead
 - ▭ Channel Limits
 - ⊥ Beacon, General
 - Contour Lines

- SOUNDING LEGEND**
- LESS THAN PROJECT DEPTH
 - PROJECT DEPTH
 - PROJECT DEPTH +1'
 - PROJECT DEPTH +2'
 - PROJECT DEPTH +3'
 - PROJECT DEPTH +4'
 - PROJECT DEPTH +5'



NOTES: THE INFORMATION DEPICTED ON THIS MAP REPRESENTS THE RESULTS OF THE SURVEYS MADE ON THE DATES INDICATED AND CAN ONLY BE CONSIDERED AS INDICATING THE GENERAL CONDITIONS EXISTING AT THAT TIME.

ALL DEPTHS AND PROJECT DEPTHS ARE REFERRED TO LOW WATER DATUM ELEVATION 577.5 FT. I.G.L.D. 1985.

GRIDS SHOWN ARE BASED ON THE NATIONAL GEODETIC SURVEY PROJECTION TABLES, STATE OF MICHIGAN, CENTRAL ZONE (2112), LAMBERT PROJECTION, 1983 NORTH AMERICAN DATUM, US SURVEY FOOT.

POSITIONING METHOD: APPLANIX POS M/V MARINESTAR GNSS OR VRS RTK MOTION COMPENSATION: APPLANIX POS M/V MRU EQUIPMENT: MULTIBEAM-F2 SONIC 2024; SINGLEBEAM-ODOM CV 300

VERTICAL WATER LEVEL READINGS WERE TAKEN FROM A PAINT MARK ON ANGLE IRON MOUNT FOR A WOODEN POST NEAR BOAT LAUNCH LABELED 'TBM POST'

2010 AERIAL PHOTOGRAPHY DATA SOURCE: USGS

Sheet Reference Number
2 of 2