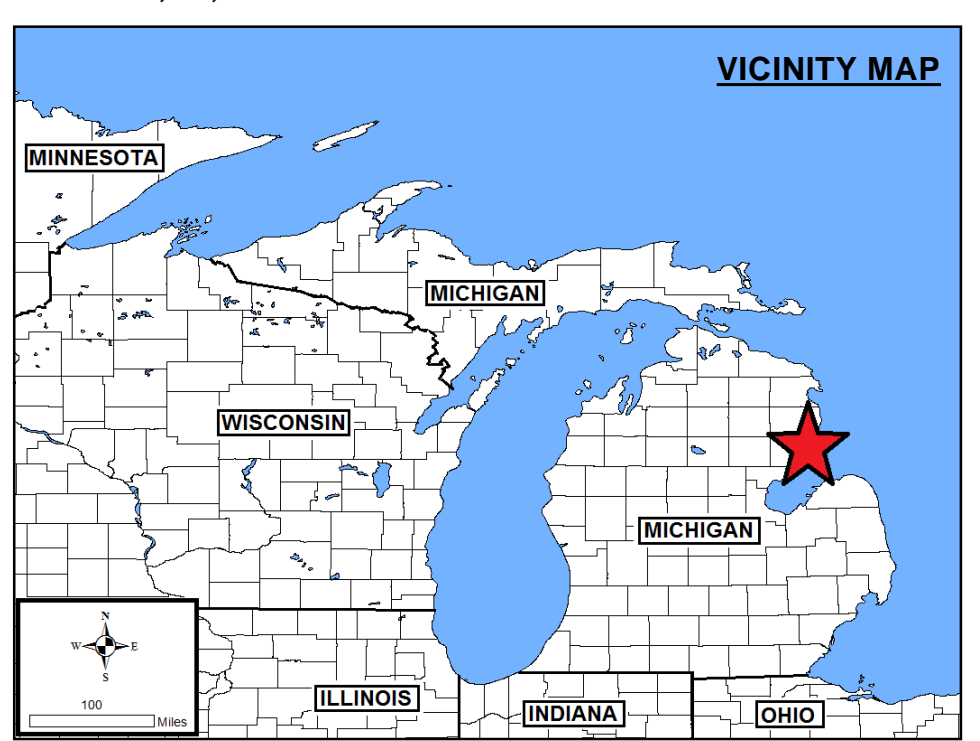
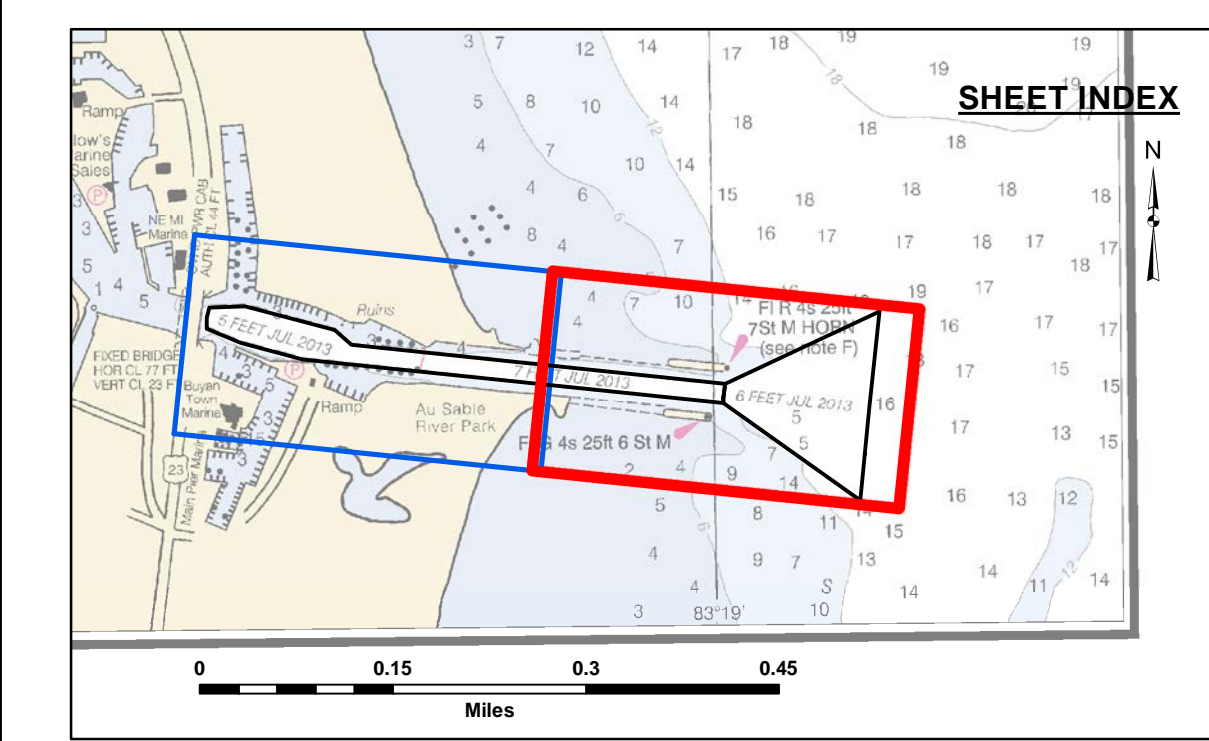
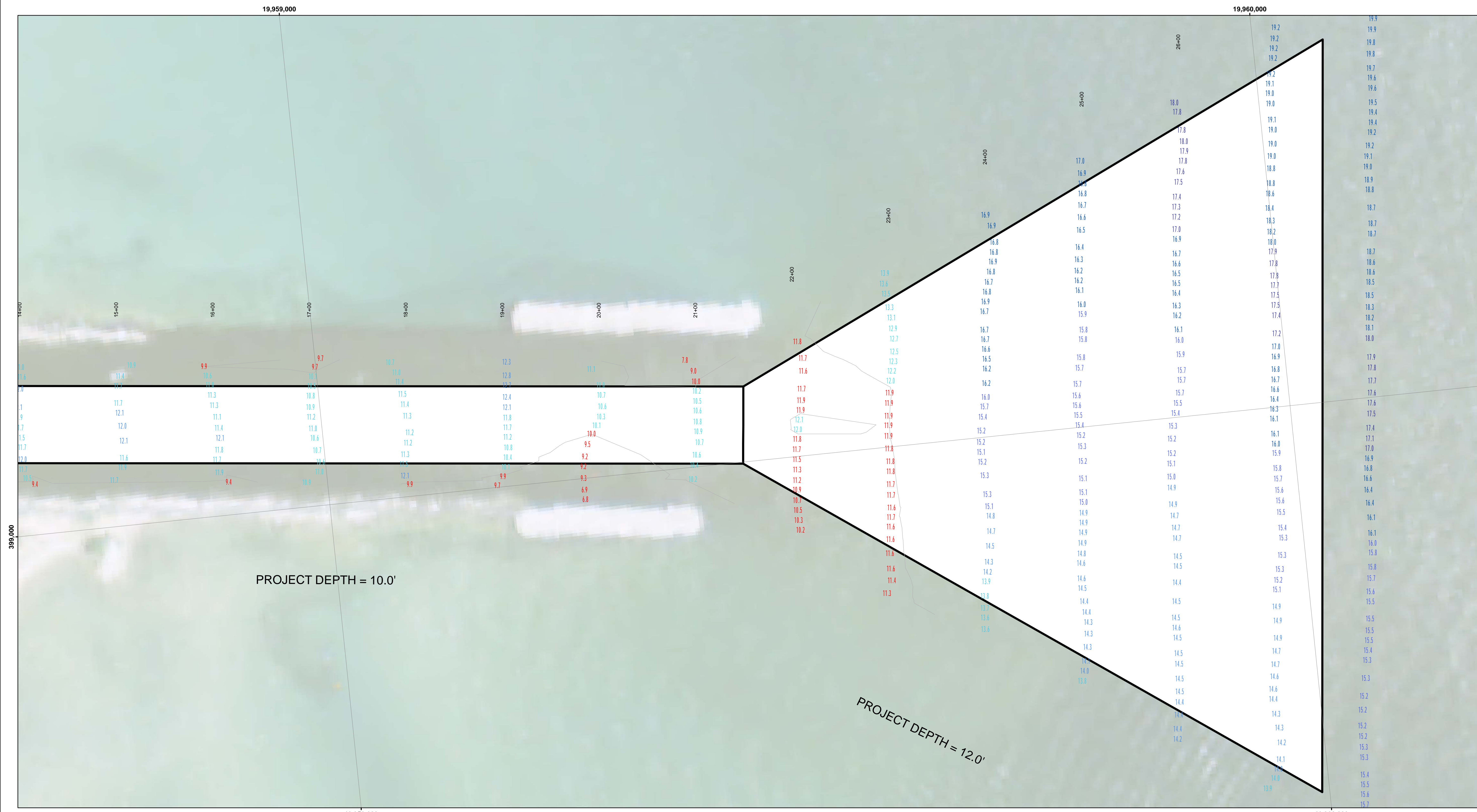




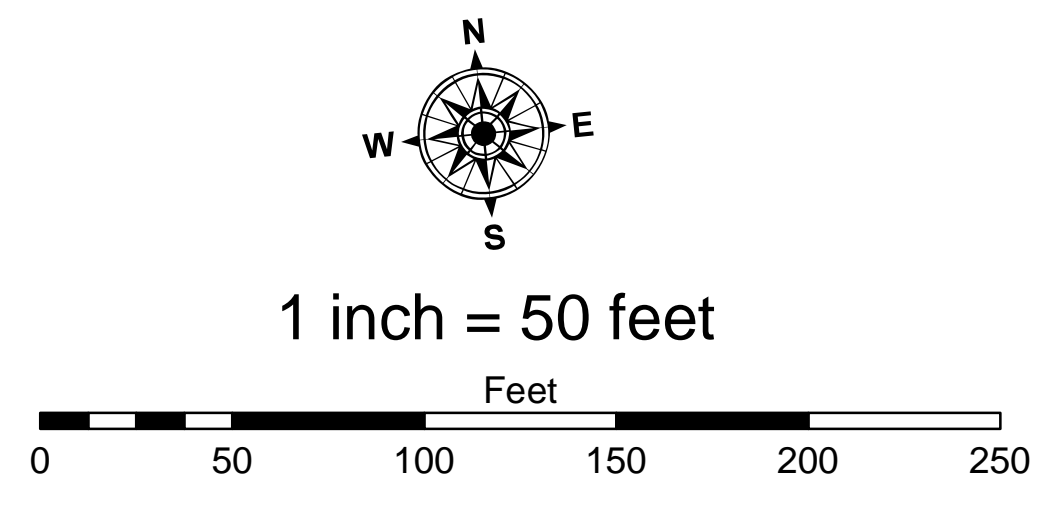
**Disclaimer:** The data represented by the results of data collection and processing for a specific US Army Corps of Engineers activity and includes the general existing conditions. The user is responsible for the results of any of the application of the data for other than its intended purpose.

**Access Constraints:** The United States Government furnishes these data and the recipient accepts and uses them with the express understanding that the data are not to be used for any purpose other than that for which they were provided. The recipient may not transfer these data to others without also transferring this Disclaimer.



- LEGEND**
- ..... Cable Submarine
  - - - Cable Overhead
  - ▭ Channel Limits
  - ⊥ Beacon, General
  - Contour Lines

- SOUNDING LEGEND**
- LESS THAN PROJECT DEPTH
  - PROJECT DEPTH
  - PROJECT DEPTH +1'
  - PROJECT DEPTH +2'
  - PROJECT DEPTH +3'
  - PROJECT DEPTH +4'
  - PROJECT DEPTH +5'



**NOTES:** THE INFORMATION DEPICTED ON THIS MAP REPRESENTS THE RESULTS OF THE SURVEYS MADE ON THE DATES INDICATED AND CAN ONLY BE CONSIDERED AS INDICATING THE GENERAL CONDITIONS EXISTING AT THAT TIME.

ALL DEPTHS AND PROJECT DEPTHS ARE REFERRED TO LOW WATER DATUM ELEVATION 577.5 FT. I.G.L.D. 1985.

GRIDS SHOWN ARE BASED ON THE NATIONAL GEODETIC SURVEY PROJECTION TABLES, STATE OF MICHIGAN, CENTRAL ZONE (2112), LAMBERT PROJECTION, 1983 NORTH AMERICAN DATUM, US SURVEY FOOT.

POSITIONING METHOD: APPLANIX POS MV WMARINESTAR GNSS OR VRS RTK MOTION COMPENSATION: APPLANIX POS MV MRU EQUIPMENT: MULTIBEAM-R2 SONIC 2024; SINGLEBEAM-ODOM CV 300

VERTICAL WATER LEVEL READINGS WERE TAKEN FROM A PAINT MARK ON ANGLE IRON MOUNT FOR A WOODEN POST NEAR BOAT LAUNCH LABELED "TBM POST"

2010 AERIAL PHOTOGRAPHY DATA SOURCE: USGS

**U.S. ARMY CORPS OF ENGINEERS  
DETROIT DISTRICT**

Submitted:	Surveyed By:
Recommended:	Plotted By:
Approved:	Checked By:

Chief, Survey Section  
Chief, Technical Services

**Ausable Harbor, MI**  
**Ausable Harbor**  
**AU\_01\_SBL\_20220518\_CS**  
**18 May 2022**

**Sheet Reference Number**  
**1 of 2**



Disclaimer: The data represents the results of data collection... The user is responsible for the results of any of the application of the data for other than its intended purpose.

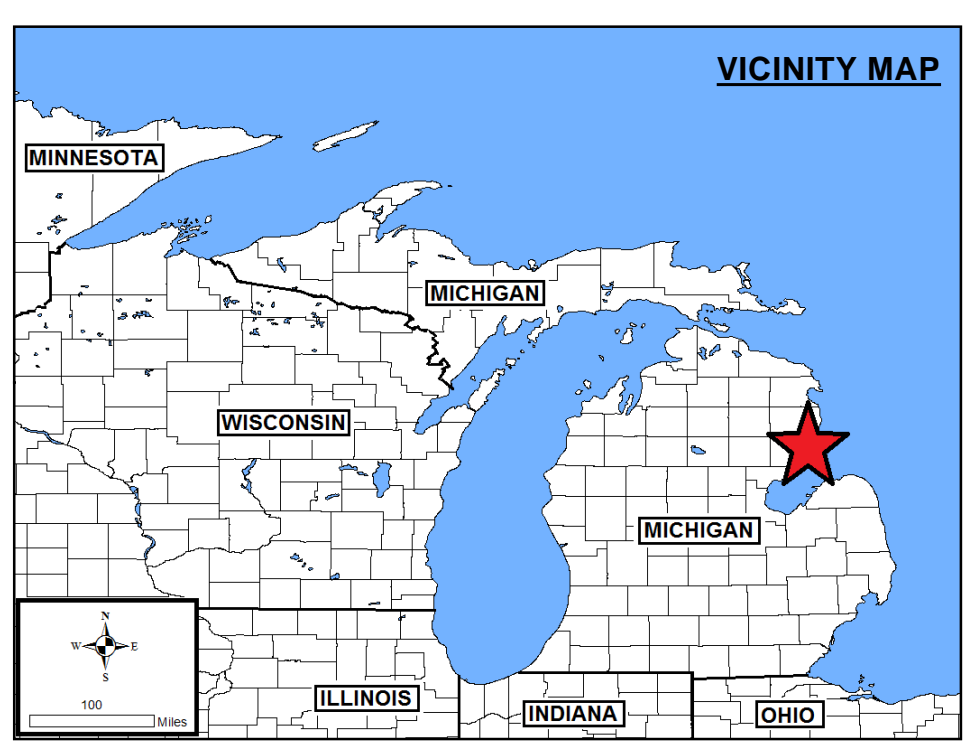
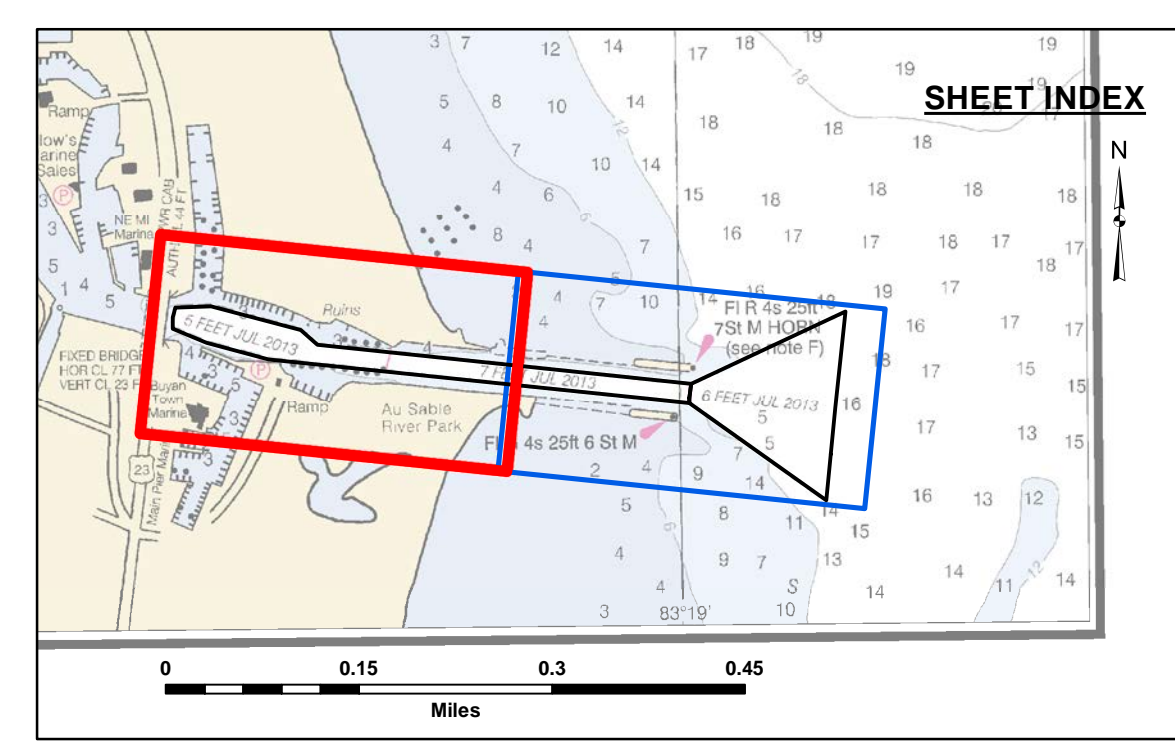


389,000

389,000

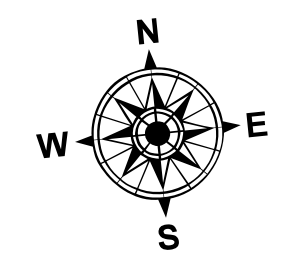
PROJECT DEPTH = 10.0'

19,958,000

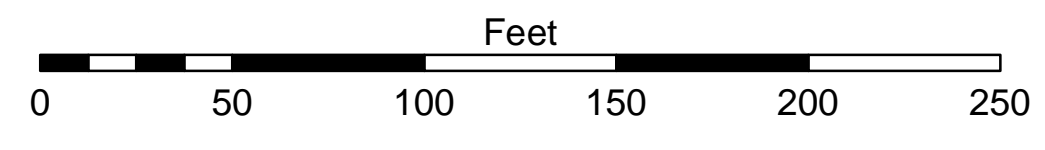


- LEGEND
- - - Cable Submarine
- - - Cable Overhead
Channel Limits
Beacon, General
Contour Lines

- SOUNDING LEGEND
LESS THAN PROJECT DEPTH
PROJECT DEPTH
PROJECT DEPTH +1'
PROJECT DEPTH +2'
PROJECT DEPTH +3'
PROJECT DEPTH +4'
PROJECT DEPTH +5'



1 inch = 50 feet



NOTES: THE INFORMATION DEPICTED ON THIS MAP REPRESENTS THE RESULTS OF THE SURVEYS MADE ON THE DATES INDICATED AND CAN ONLY BE CONSIDERED AS INDICATING THE GENERAL CONDITIONS EXISTING AT THAT TIME. ALL DEPTHS AND PROJECT DEPTHS ARE REFERRED TO LOW WATER DATUM ELEVATION 577.5 FT. I.G.L.D. 1985. GRIDS SHOWN ARE BASED ON THE NATIONAL GEODETIC SURVEY PROJECTION TABLES, STATE OF MICHIGAN, CENTRAL ZONE (2112), LAMBERT PROJECTION, 1983 NORTH AMERICAN DATUM, US SURVEY FOOT. POSITIONING METHOD: APPLANIX POS MV WMARINESTAR GNSS OR VRS RTK MOTION COMPENSATION: APPLANIX POS MV MRU EQUIPMENT: MULTIBEAM-R2 SONIC 2024; SINGLEBEAM-ODOM CV 300 VERTICAL WATER LEVEL READINGS WERE TAKEN FROM A PAINT MARK ON ANGLE IRON MOUNT FOR A WOODEN POST NEAR BOAT LAUNCH LABELED "TBM POST" 2010 AERIAL PHOTOGRAPHY DATA SOURCE: USGS

Table with columns for Submitted, Recommended, and Approved, and rows for Surveyed By, Plotted By, and Checked By.

Ausable Harbor, MI
Ausable Harbor
AU\_01\_SBL\_20220518\_CS
18 May 2022

Sheet Reference Number
2 of 2