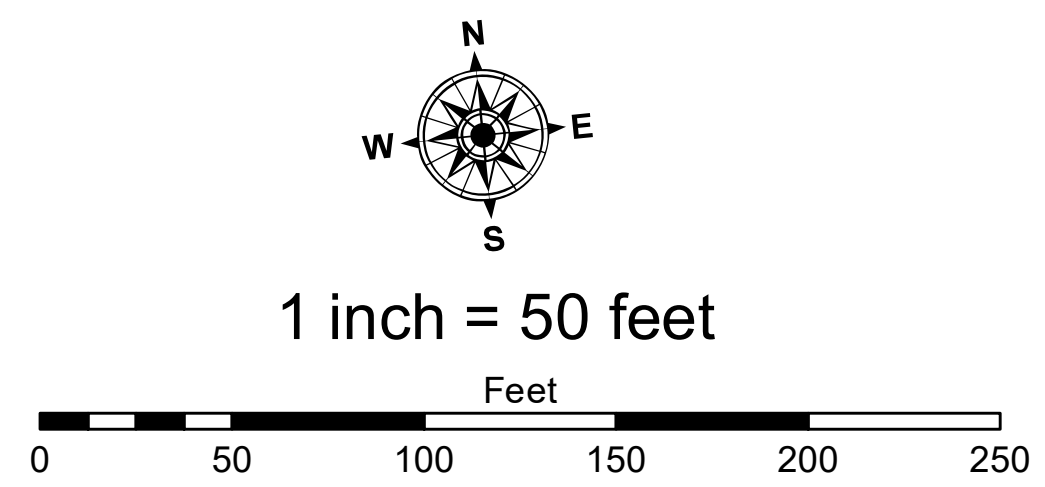


LEGEND

- Cable Submarine
- - - Cable Overhead
- ▭ Channel Limits
- ⊥ Beacon, General
- Contour Lines

SOUNDING LEGEND

- LESS THAN PROJECT DEPTH
- PROJECT DEPTH
- PROJECT DEPTH + 1'
- PROJECT DEPTH + 2'
- PROJECT DEPTH + 3'
- PROJECT DEPTH + 4'
- PROJECT DEPTH + 5'



NOTES:

THE INFORMATION DEPICTED ON THIS MAP REPRESENTS THE RESULTS OF THE SURVEYS MADE ON THE DATES INDICATED AND CAN ONLY BE CONSIDERED AS INDICATING THE GENERAL CONDITIONS EXISTING AT THAT TIME.

ALL DEPTHS AND PROJECT DEPTHS ARE REFERRED TO LOW WATER DATUM ELEVATION 577.5 FT. ABOVE MEAN WATER LEVEL, I.G.L.D. 1985.

GRIDS SHOWN ARE BASED ON THE NATIONAL GEODETIC SURVEY PROJECTION TABLES, STATE OF MICHIGAN, CENTRAL ZONE (2112), LAMBERT PROJECTION, 1983 NORTH AMERICAN DATUM, US SURVEY FOOT.

PROJECT DEPTH = 9.0'

POSITIONING METHOD: APPLANIX POS M/V W/DGPS CORRECTIONS
 MOTION COMPENSATION: APPLANIX OCEAN MASTER POS M/V
 EQUIPMENT: MULTIBEAM-R2 SONIC 2024, SINGLEBEAM-ODOM CV300

VERTICAL WATER LEVEL READINGS WERE TAKEN FROM A PAINT MARK ON ANGLE IRON MOUNT FOR A WOODEN POST NEAR BOAT LAUNCH LABELED 'TBM POST'

2010 AERIAL PHOTOGRAPHY DATA SOURCE: USGS

** SHOAILEST SOUNDING PER QUARTER PER REACH.



DISCLAIMER: The data represents the results of data collection/processing for a specific US Army Corps of Engineers activity and indicates the general existing conditions. The user is responsible for the accuracy, completeness, and reliability of the data for other than its intended purpose. The user is responsible for the accuracy, completeness, and reliability of the data for other than its intended purpose.

ACCESS CONSTRAINTS: The United States Government furnishes these data and the recipient accepts and uses them with the express understanding that they are not to be distributed, reproduced, expressed, or implied concerning the accuracy, completeness, reliability, usability, or suitability for any particular purpose of the user. These data belong to the Government. Therefore the recipient may not transfer these data to others without transferring the disclaimer.

U.S. ARMY CORPS OF ENGINEERS
DETROIT DISTRICT

Submitted By:	Surveyed By:
Recommended By: Chief, Survey Section	Plotted By:
Approved By:	Checked By:

Ausable Harbor, MI
 Ausable Harbor
 AU_01_SBL_20211013_CS
 13 October 2021

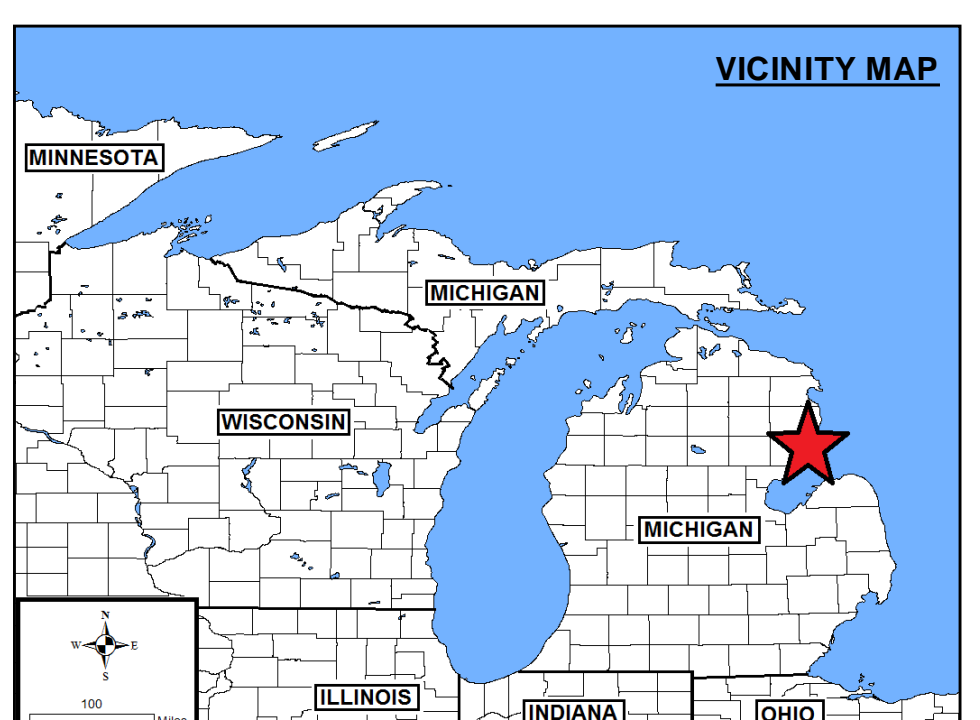
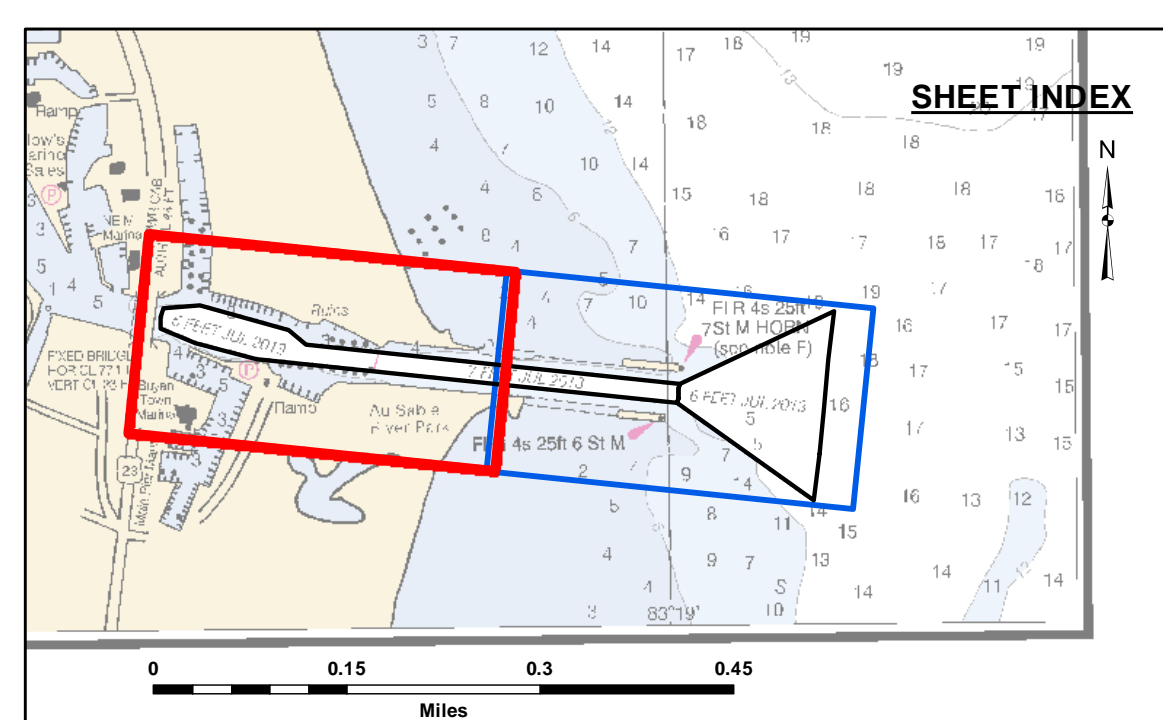
Sheet Reference Number
 1 of 2



Disclaimer: The data represents the results of data collection/processing for a specific US Army Corps of Engineers activity and indicates the general existing conditions, accuracy, or implied concerning the accuracy, completeness, readability, usability, or suitability for any particular purpose of the user. These data belong to the Government. Therefore the recipient may not transfer these data to others without also transferring the Disclaimer.

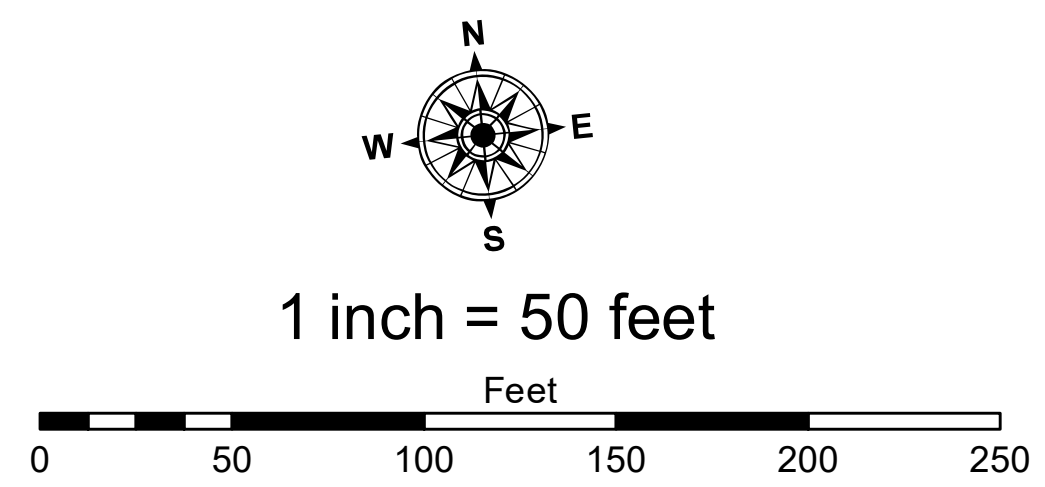
U.S. ARMY CORPS OF ENGINEERS DETROIT DISTRICT		
Submitted:	Surveyed By:	
Recommended:	Plotted By:	
Approved:	Chief, Survey Section	
	Chief, Technical Services	

Ausable Harbor, MI
Ausable Harbor
AU_01_SBL_20211013_CS
13 October 2021



- LEGEND**
- Cable Submarine
 - - - Cable Overhead
 - ▭ Channel Limits
 - ⊥ Beacon, General
 - Contour Lines

- SOUNDING LEGEND**
- LESS THAN PROJECT DEPTH
 - PROJECT DEPTH
 - PROJECT DEPTH +1'
 - PROJECT DEPTH +2'
 - PROJECT DEPTH +3'
 - PROJECT DEPTH +4'
 - PROJECT DEPTH +5'



NOTES:

THE INFORMATION DEPICTED ON THIS MAP REPRESENTS THE RESULTS OF THE SURVEYS MADE ON THE DATES INDICATED AND CAN ONLY BE CONSIDERED AS INDICATING THE GENERAL CONDITIONS EXISTING AT THAT TIME.

ALL DEPTHS AND PROJECT DEPTHS ARE REFERRED TO LOW WATER DATUM ELEVATION 577.5 FT. ABOVE MEAN WATER LEVEL, I.G.L.D. 1985.

GRIDS SHOWN ARE BASED ON THE NATIONAL GEODETIC SURVEY PROJECTION TABLES, STATE OF MICHIGAN, CENTRAL ZONE (2112), LAMBERT PROJECTION, 1983 NORTH AMERICAN DATUM, US SURVEY FOOT.

PROJECT DEPTH = 9.0'

POSITIONING METHOD: APPLANIX POS M/V W/DGPS CORRECTIONS
 MOTION COMPENSATION: APPLANIX OCEAN MASTER POS M/V
 EQUIPMENT: MULTIBEAM-R2 SONIC 2024; SINGLEBEAM-ODOM CV300

VERTICAL WATER LEVEL READINGS WERE TAKEN FROM A PAINT MARK ON ANGLE IRON MOUNT FOR A WOODEN POST NEAR BOAT LAUNCH LABELED "TBM POST"

2010 AERIAL PHOTOGRAPHY DATA SOURCE: USGS

** SHOALEST SOUNDING PER QUARTER PER REACH.

Sheet Reference Number
2 of 2