

- LEGEND**
- Cable Submarine
 - Cable Overhead
 - Channel Limits
 - Beacon, General
 - Contour Lines

- SOUNDING LEGEND**
- LESS THAN PROJECT DEPTH
 - PROJECT DEPTH
 - PROJECT DEPTH +1'
 - PROJECT DEPTH +2'
 - PROJECT DEPTH +3'
 - PROJECT DEPTH +4'
 - PROJECT DEPTH +5'



1 inch = 100 feet



NOTES: THE INFORMATION DEPICTED ON THIS MAP REPRESENTS THE RESULTS OF THE SURVEYS MADE ON THE DATES INDICATED AND CAN ONLY BE CONSIDERED AS INDICATING THE GENERAL CONDITIONS EXISTING AT THAT TIME.

ALL DEPTHS AND PROJECT DEPTHS ARE REFERRED TO LOW WATER DATUM ELEVATION 577.5 FT. ABOVE MEAN WATER LEVEL, I.G.L.D. 1985.

GRIDS SHOWN ARE BASED ON THE NATIONAL GEODETIC SURVEY PROJECTION TABLES, STATE OF MICHIGAN, CENTRAL ZONE (2112), LAMBERT PROJECTION, 1983 NORTH AMERICAN DATUM, US SURVEY FOOT.

PROJECT DEPTHS = 21.0', 18.5', AND TURNING BASIN 15.0' (AS NOTED)

POSITION SYSTEM APPLANIX POS MV4 W/VRS-RTK OR MARINESTAR G2+
SONIC SOUNDER ODOM CV-300
TRANSDUCER 200 KHZ WITH 4.0 DEGREE BEAM ANGLE

WATER LEVEL ELEVATIONS (GAGE) OBTAINED DURING THE SURVEY WERE FROM THE NOAA GAGE LOCATED IN ALEPNA.

2010 AERIAL PHOTOGRAPHY DATA SOURCE: USGS



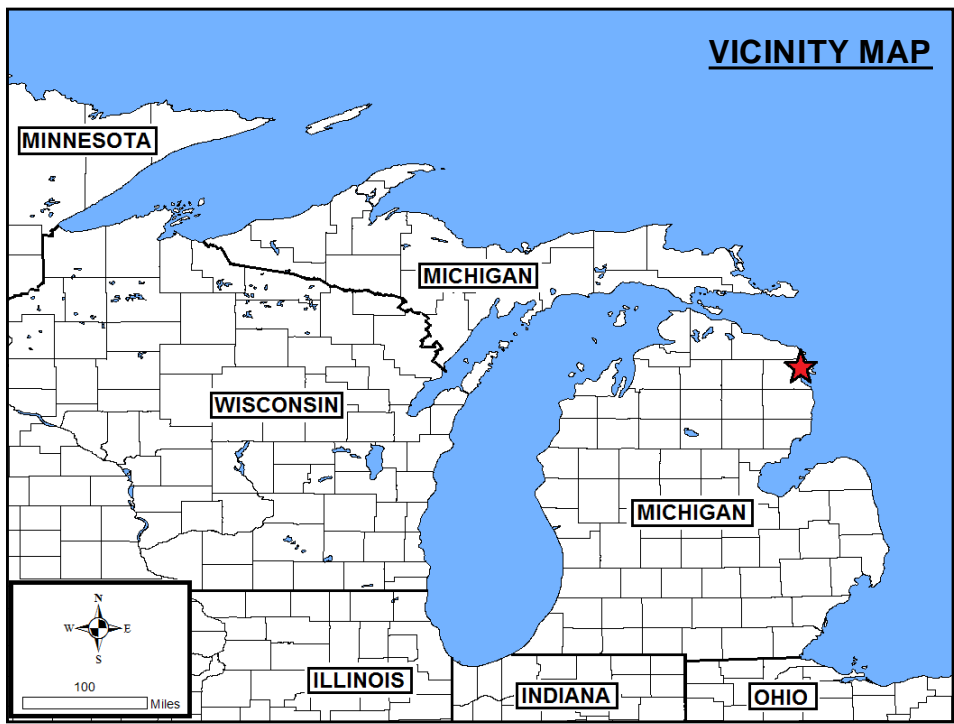
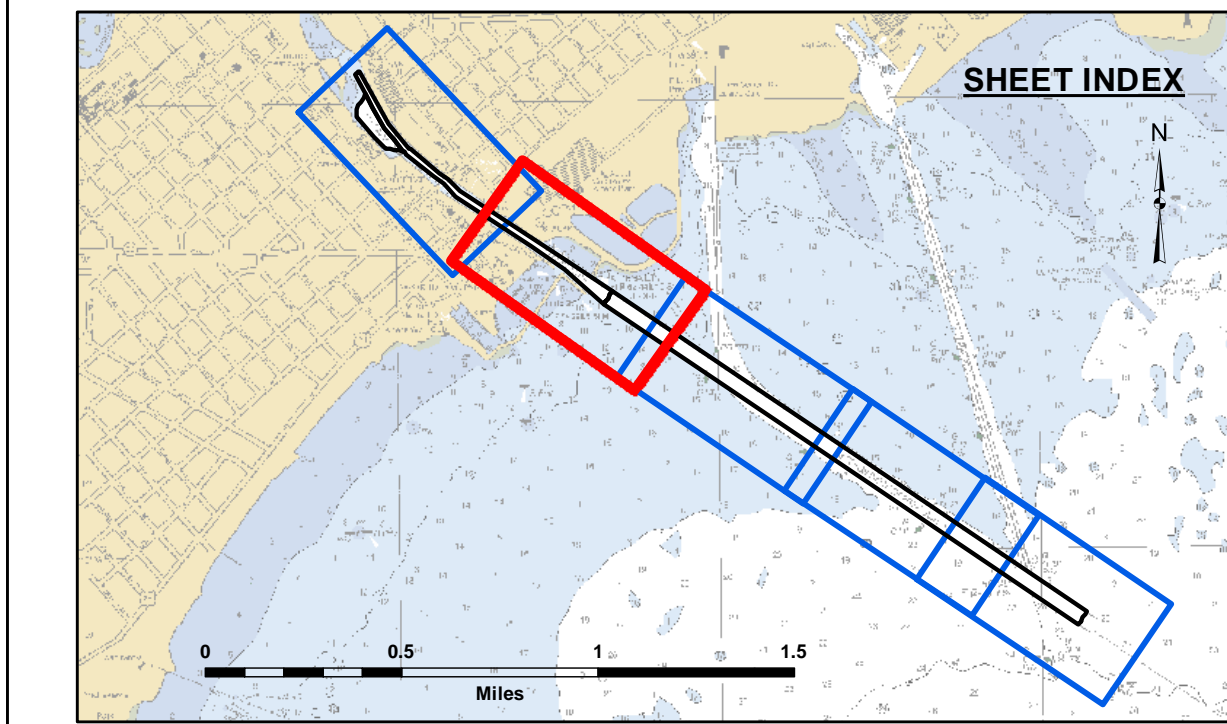
The data on this map represents the results of data collection and processing for a specific US Army Corps of Engineers activity and indicates the general existing conditions. It is not intended to be used for any other purpose, accuracy, or specifications. The user is responsible for the results of any of the application of the data for other than its intended purpose.

DISCLAIMER: The United States Government furnishes these data and the recipient accepts and uses them with the express understanding that the data are not to be used for any purpose other than that for which they were provided. The recipient may not transfer these data to others without also transferring this Disclaimer.

U.S. ARMY CORPS OF ENGINEERS DETROIT DISTRICT		
Submitted:	Surveyed By:	
Recommended:	Filed By:	
Approved:	Chief, Survey Section	
	Chief, Technical Services	

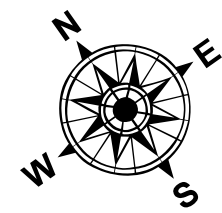
Alpena Harbor, MI
Alpena Harbor
AP_01_ALP_20230919_CS
19 September 2023

Sheet
Reference
Number
1 of 5

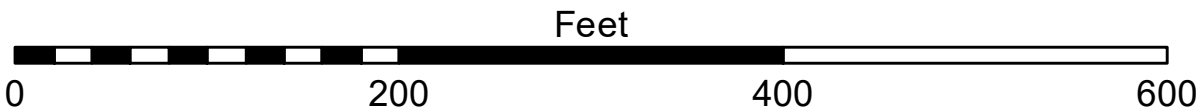


- LEGEND**
- Cable Submarine
 - Cable Overhead
 - Channel Limits
 - Beacon, General
 - Contour Lines

- SOUNDING LEGEND**
- LESS THAN PROJECT DEPTH
 - PROJECT DEPTH
 - PROJECT DEPTH +1'
 - PROJECT DEPTH +2'
 - PROJECT DEPTH +3'
 - PROJECT DEPTH +4'
 - PROJECT DEPTH +5'



1 inch = 100 feet



NOTES: THE INFORMATION DEPICTED ON THIS MAP REPRESENTS THE RESULTS OF THE SURVEYS MADE ON THE DATES INDICATED AND CAN ONLY BE CONSIDERED AS INDICATING THE GENERAL CONDITIONS EXISTING AT THAT TIME.

ALL DEPTHS AND PROJECT DEPTHS ARE REFERRED TO LOW WATER DATUM ELEVATION 577.5 FT. ABOVE MEAN WATER LEVEL, I.G.L.D. 1985.

GRIDS SHOWN ARE BASED ON THE NATIONAL GEODETIC SURVEY PROJECTION TABLES, STATE OF MICHIGAN, CENTRAL ZONE (2112), LAMBERT PROJECTION, 1983 NORTH AMERICAN DATUM, US SURVEY FOOT.

PROJECT DEPTHS = 21.0', 18.5', AND TURNING BASIN 15.0' (AS NOTED)

POSITION SYSTEM APPLANIX POS MV4 W/VRS-RTK OR MARINESTAR G2+
SONIC SOUNDER ODOM CV-300
TRANSDUCER 200 KHZ WITH 4.0 DEGREE BEAM ANGLE

WATER LEVEL ELEVATIONS (GAGE) OBTAINED DURING THE SURVEY WERE FROM THE NOAA GAGE LOCATED IN ALEPNA.

2010 AERIAL PHOTOGRAPHY DATA SOURCE: USGS



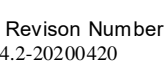
The data is liability. The data represents the results of data collection and is not a guarantee of accuracy. The user is responsible for the accuracy of the data. The user is responsible for the results of any of the application of the data for other than its intended purpose.

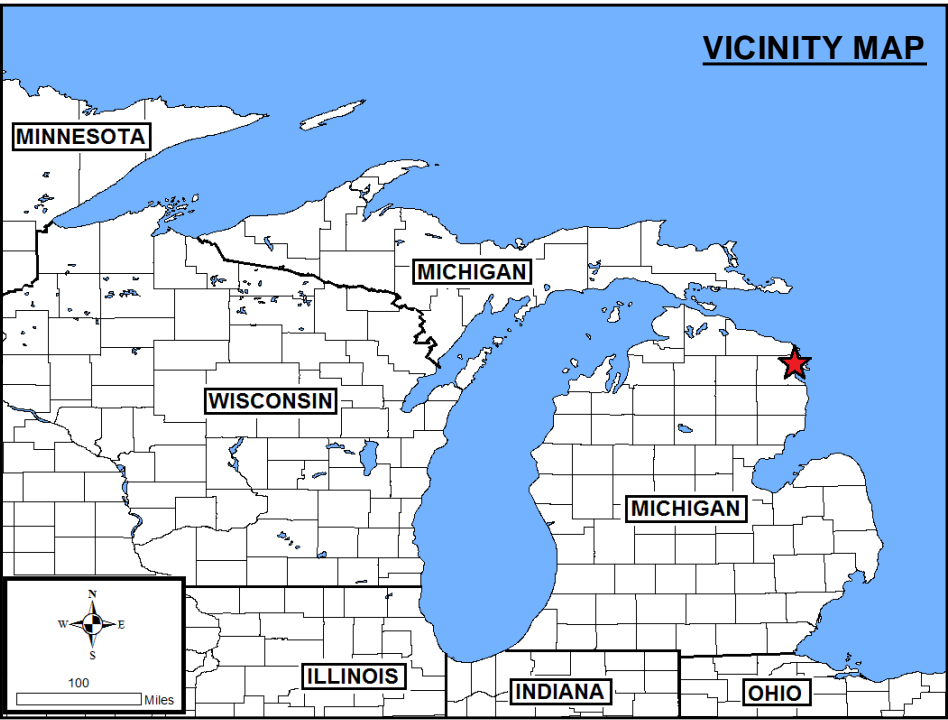
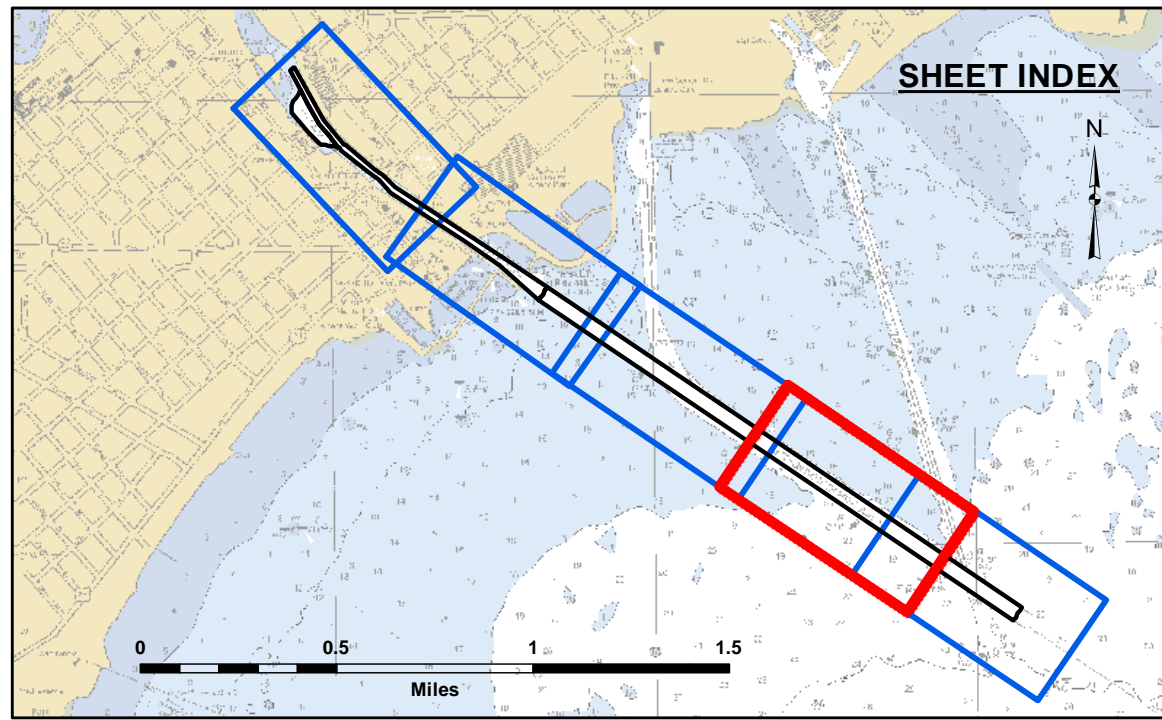
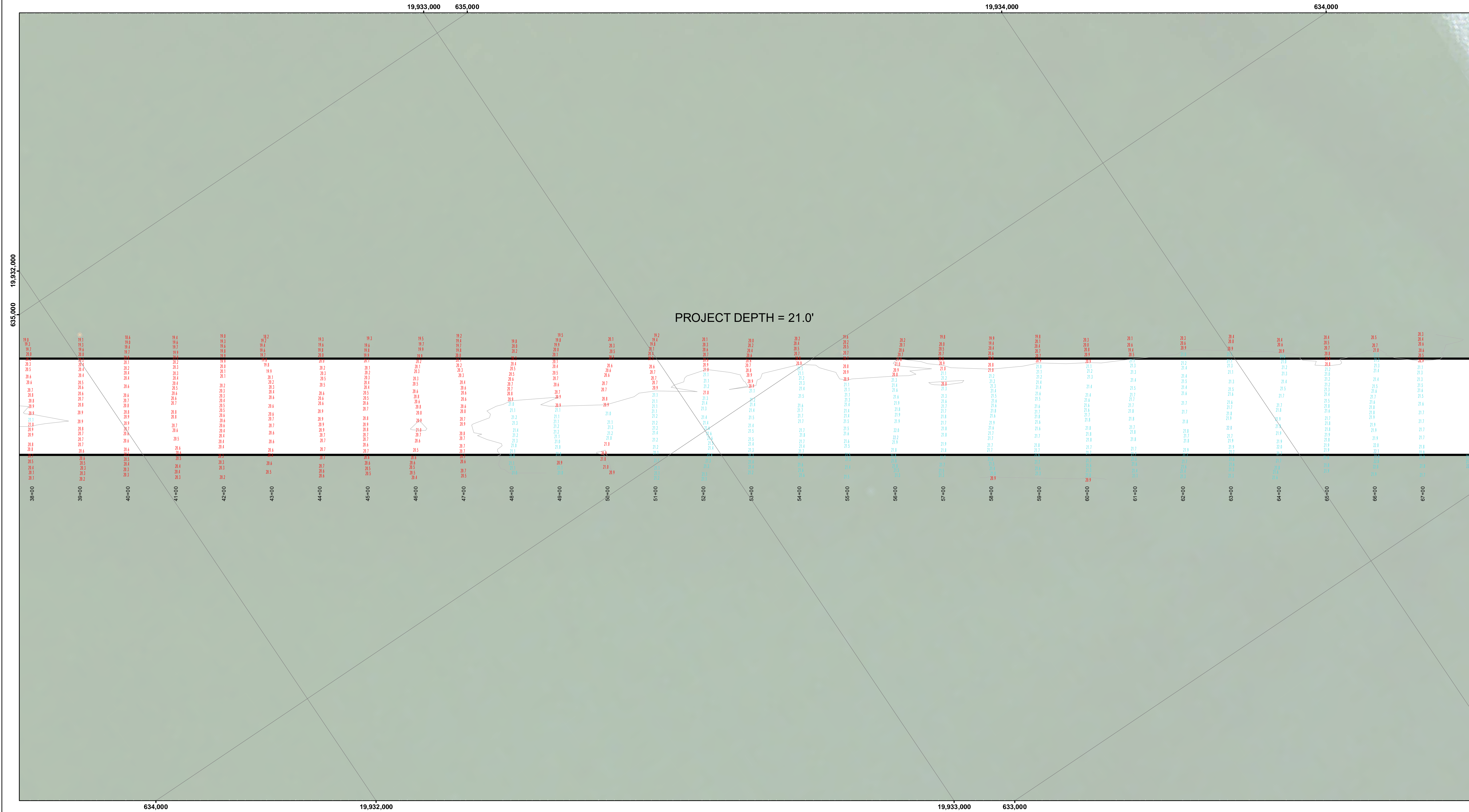
Access Constraints: The United States Government furnishes these data and the recipient accepts and uses them with the express understanding that the data are not to be used for any purpose other than that for which they were provided. The user is responsible for the accuracy, completeness, readability, usability or suitability for any particular purpose of the data. The user is responsible for the results of any use of the data under no liability whatsoever to any person by reason of any use made thereof. These data belong to the Government. Therefore the recipient may not transfer these data to others without also transferring the Disclaimer.

U.S. ARMY CORPS OF ENGINEERS DETROIT DISTRICT	
Submitted: _____	Surveyed By: _____
Recommended: _____	Plotted By: _____
Approved: _____	Checked By: _____
Chief, Technical Services	

Alpena Harbor, MI
Alpena Harbor
AP_01_ALP_20230919_CS
19 September 2023

Sheet
Reference
Number
2 of 5





LEGEND

- Cable Submarine
- Cable Overhead
- Channel Limits
- Beacon, General
- Contour Lines

SOUNDING LEGEND

- LESS THAN PROJECT DEPTH
- PROJECT DEPTH
- PROJECT DEPTH +1'
- PROJECT DEPTH +2'
- PROJECT DEPTH +3'
- PROJECT DEPTH +4'
- PROJECT DEPTH +5'

1 inch = 100 feet

Feet

0 200 400 600

NOTES: THE INFORMATION DEPICTED ON THIS MAP REPRESENTS THE RESULTS OF THE SURVEYS MADE ON THE DATES INDICATED AND CAN ONLY BE CONSIDERED AS INDICATING THE GENERAL CONDITIONS EXISTING AT THAT TIME.

ALL DEPTHS AND PROJECT DEPTHS ARE REFERRED TO LOW WATER DATUM ELEVATION 577.5 FT. ABOVE MEAN WATER LEVEL, 1.G.L.D. 1985.

GRIDS SHOWN ARE BASED ON THE NATIONAL GEODETIC SURVEY PROJECTION TABLES, STATE OF MICHIGAN, CENTRAL ZONE (2112), LAMBERT PROJECTION, 1983 NORTH AMERICAN DATUM, US SURVEY FOOT.

PROJECT DEPTHS = 21.0', 18.5', AND TURNING BASIN 15.0' (AS NOTED)

POSITION SYSTEM APPLANIX POS MV4 W/VRS-RTK OR MARINESTAR G2+
SONIC SOUNDER ODOM CV-300
TRANSDUCER 200 KHZ WITH 4.0 DEGREE BEAM ANGLE

WATER LEVEL ELEVATIONS (GAGE) OBTAINED DURING THE SURVEY WERE FROM THE NOAA GAGE LOCATED IN ALEPNA.

2010 AERIAL PHOTOGRAPHY DATA SOURCE: USGS


**US Army Corps
of Engineers**
District: CELRE

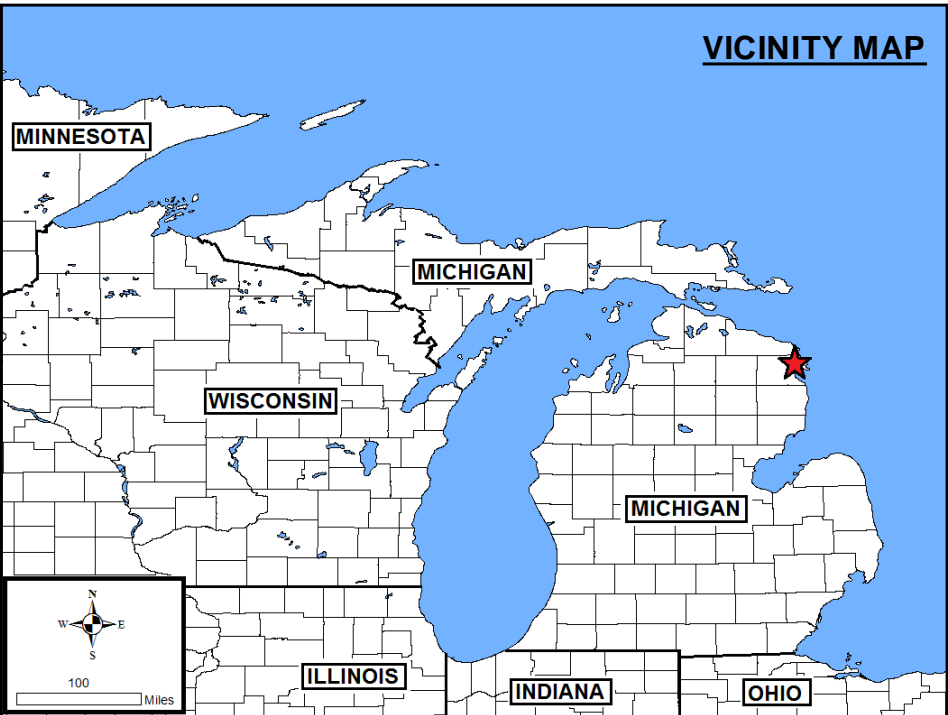
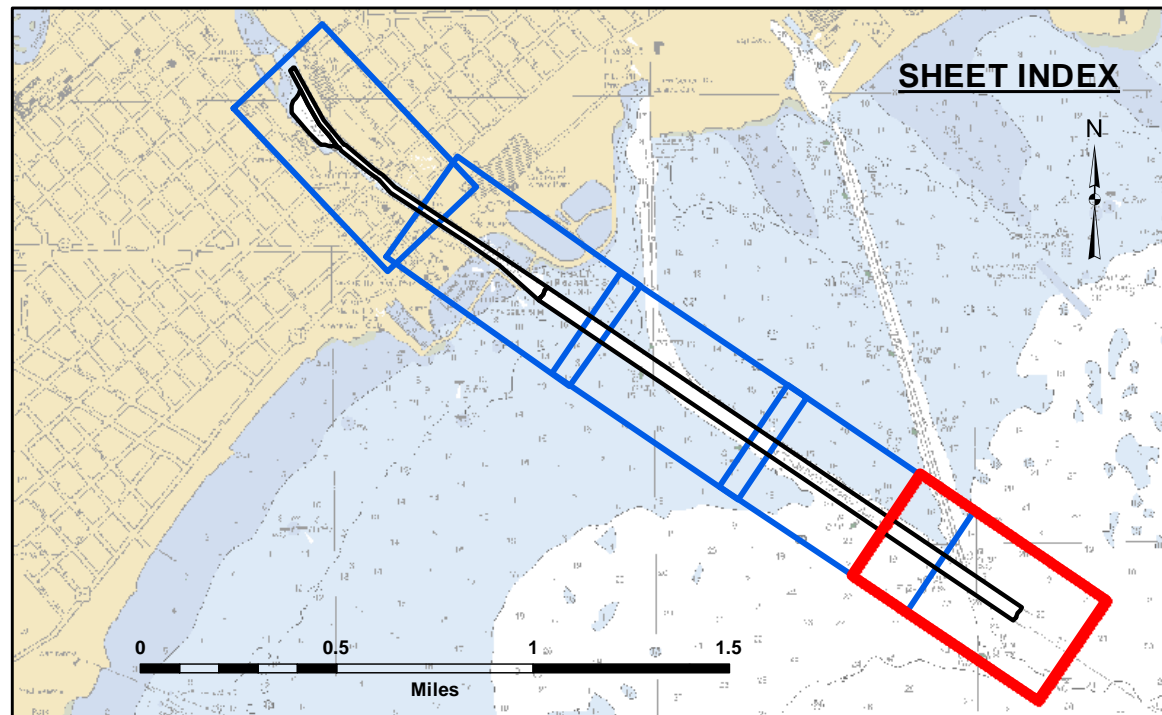
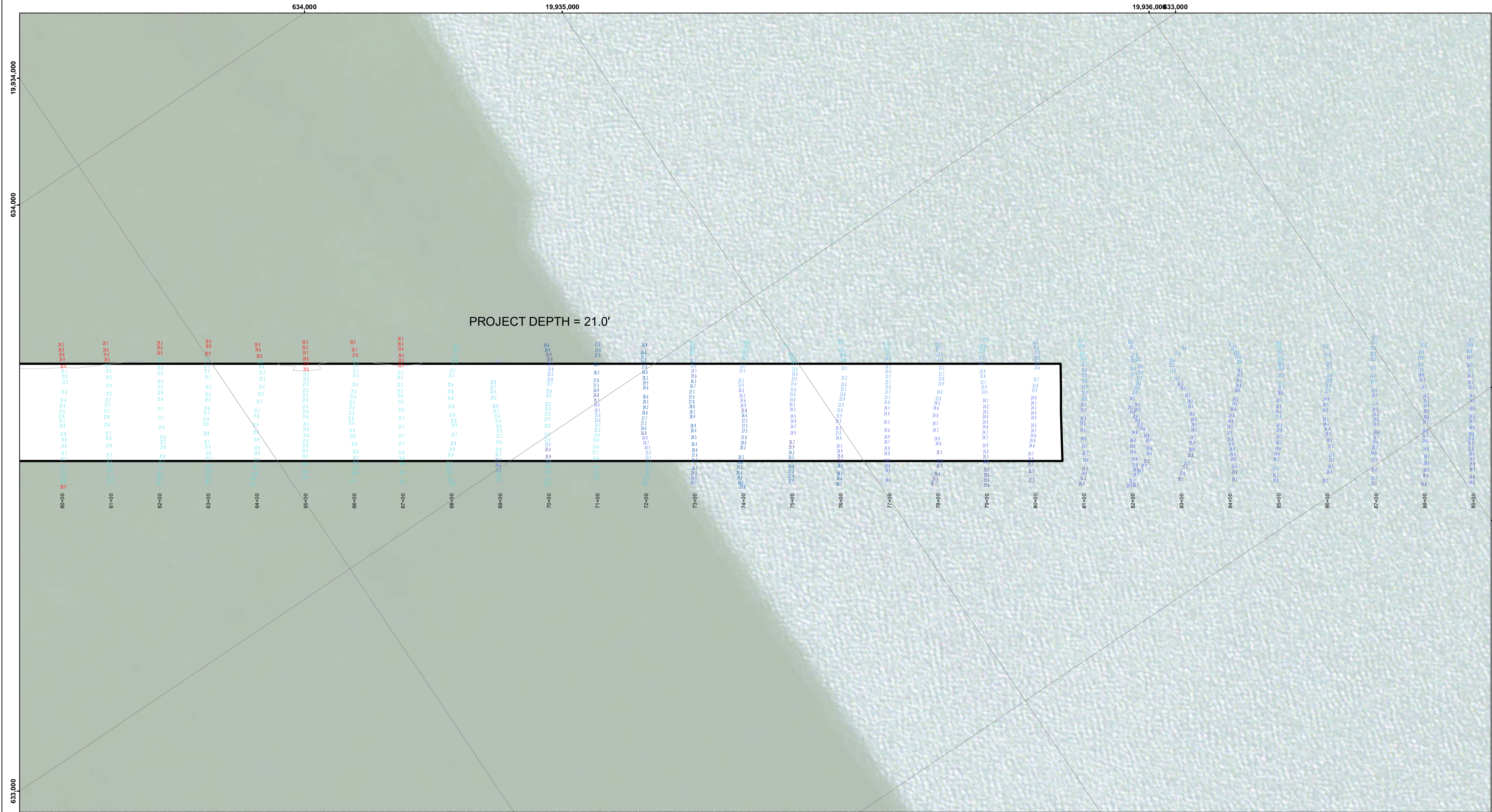
The data on this map represents the results of data collection and processing for a specific US Army Corps of Engineers activity and indicates the general existing conditions. It is not intended to be used for any other purpose, accuracy, or specifications. The user is responsible for the results of any of the application of the data for other than its intended purpose.

DISCLAIMER: The United States Government furnishes these data and the recipient accepts and uses them with the express understanding that the data are not to be used for any purpose other than that for which they were provided, and that the recipient may not transfer these data to others without transferring this Disclaimer.

U.S. ARMY CORPS OF ENGINEERS DETROIT DISTRICT	
Submitted: _____	Surveyed By: _____
Recommended: _____	Plotted By: _____
Approved: _____	Checked By: _____

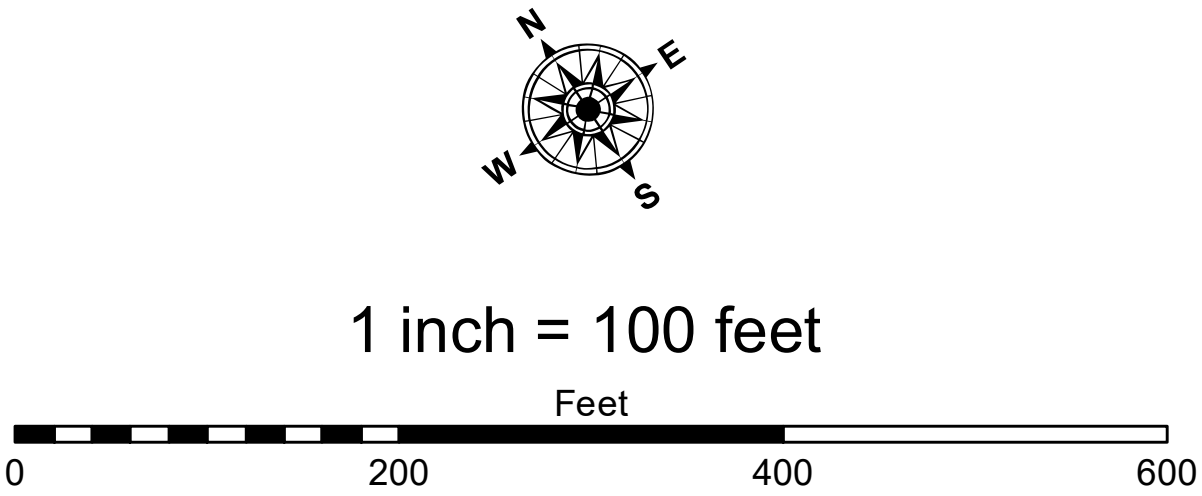
Alpena Harbor, MI
Alpena Harbor
AP_01_ALP_20230919_CS
19 September 2023

**Sheet
Reference
Number**
4 of 5



- LEGEND**
- Cable Submarine
 - Cable Overhead
 - ▭ Channel Limits
 - ┆ Beacon, General
 - Contour Lines

- SOUNDING LEGEND**
- LESS THAN PROJECT DEPTH
 - PROJECT DEPTH
 - PROJECT DEPTH +1'
 - PROJECT DEPTH +2'
 - PROJECT DEPTH +3'
 - PROJECT DEPTH +4'
 - PROJECT DEPTH +5'



NOTES: THE INFORMATION DEPICTED ON THIS MAP REPRESENTS THE RESULTS OF THE SURVEYS MADE ON THE DATES INDICATED AND CAN ONLY BE CONSIDERED AS INDICATING THE GENERAL CONDITIONS EXISTING AT THAT TIME.

ALL DEPTHS AND PROJECT DEPTHS ARE REFERRED TO LOW WATER DATUM ELEVATION 577.5 FT. ABOVE MEAN WATER LEVEL, I.G.L.D. 1985.

GRIDS SHOWN ARE BASED ON THE NATIONAL GEODETIC SURVEY PROJECTION TABLES, STATE OF MICHIGAN, CENTRAL ZONE (2112), LAMBERT PROJECTION, 1983 NORTH AMERICAN DATUM, US SURVEY FOOT.

PROJECT DEPTHS = 21.0', 18.5', AND TURNING BASIN 15.0' (AS NOTED)

POSITION SYSTEM APPLANIX POS MV4 W/VRS-RTK OR MARINESTAR G2+
SONIC SOUNDER ODOM CV-300
TRANSUDGER 200 KHZ WITH 4.0 DEGREE BEAM ANGLE

WATER LEVEL ELEVATIONS (GAGE) OBTAINED DURING THE SURVEY WERE FROM THE NOAA GAGE LOCATED IN ALEPNA.

2010 AERIAL PHOTOGRAPHY DATA SOURCE: USGS



The data is liability. The data represents the results of data collection and is not a guarantee of accuracy. The data is for informational purposes only and is not to be used for any other purpose. The user is responsible for the results of any application of the data for other than its intended purpose.

Access Constraints: The United States Government furnishes these data and the recipient accepts and uses them with the express understanding that the data are not to be used for any other purpose, expressed, or implied concerning the accuracy, completeness, readability, usability or suitability for any particular purpose of the recipient. The recipient agrees to indemnify the United States Government from and against all claims, damages, losses, and expenses, including reasonable attorneys' fees, incurred by the United States Government as a result of the recipient's use of the data for any purpose other than that for which the data were provided. These data belong to the Government. The recipient may not transfer these data to others without also transferring this Disclaimer.

U.S. ARMY CORPS OF ENGINEERS DETROIT DISTRICT	
Submitted: _____	Surveyed By: _____
Recommended: _____	Plotted By: _____
Approved: _____	Checked By: _____
Chief, Survey Section	
Chief, Technical Services	

Alpena Harbor, MI
Alpena Harbor
AP_01_ALP_20230919_CS
19 September 2023

Sheet
Reference
Number
5 of 5