

- LEGEND**
- Cable Submarine
 - Cable Overhead
 - ▮ Channel Limits
 - └ Beacon, General
 - Contour Lines

- SOUNDING LEGEND**
- LESS THAN PROJECT DEPTH
 - PROJECT DEPTH
 - PROJECT DEPTH +1'
 - PROJECT DEPTH +2'
 - PROJECT DEPTH +3'
 - PROJECT DEPTH +4'
 - PROJECT DEPTH +5'



1 inch = 100 feet



NOTES: THE INFORMATION DEPICTED ON THIS MAP REPRESENTS THE RESULTS OF THE SURVEYS MADE ON THE DATES INDICATED AND CAN ONLY BE CONSIDERED AS INDICATING THE GENERAL CONDITIONS EXISTING AT THAT TIME.

ALL DEPTHS AND PROJECT DEPTHS ARE REFERRED TO LOW WATER DATUM ELEVATION 577.5 FT. ABOVE MEAN WATER LEVEL, I.G.L.D. 1985.

GRIDS SHOWN ARE BASED ON THE NATIONAL GEODETIC SURVEY PROJECTION TABLES, STATE OF MICHIGAN, CENTRAL ZONE (2112), LAMBERT PROJECTION, 1983 NORTH AMERICAN DATUM, US SURVEY FOOT.

PROJECT DEPTHS = 21.0', 18.5', AND TURNING BASIN 15.0' (AS NOTED)

POSITION SYSTEM APPLANIX POS MV4 W/VRS-RTK OR MARINESTAR G2+
SONIC SOUNDER ODOM CV-300
TRANSDUCER 200 KHZ WITH 4.0 DEGREE BEAM ANGLE

WATER LEVEL ELEVATIONS (GAGE) OBTAINED DURING THE SURVEY WERE FROM THE NOAA GAGE LOCATED IN ALEPNA.

2010 AERIAL PHOTOGRAPHY DATA SOURCE: USGS



DISCLAIMER: The data represents the results of data collection and processing for a specific US Army Corps of Engineers activity and indicates the general existing conditions. The user is responsible for the results and accuracy of the data for other than its intended purpose. The user is responsible for the results and accuracy of the data for other than its intended purpose.

ACCESS: The United States Government furnishes these data and the recipient accepts and uses them with the express understanding that the data are not to be used for any purpose other than that for which they were provided, and that the data are not to be used for any purpose other than that for which they were provided.

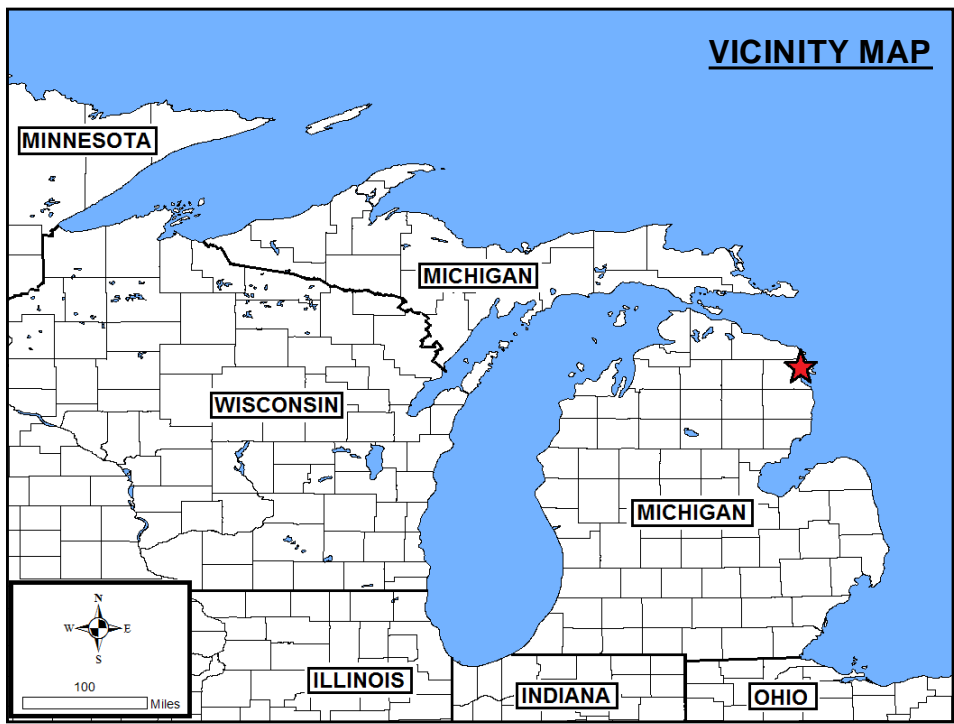
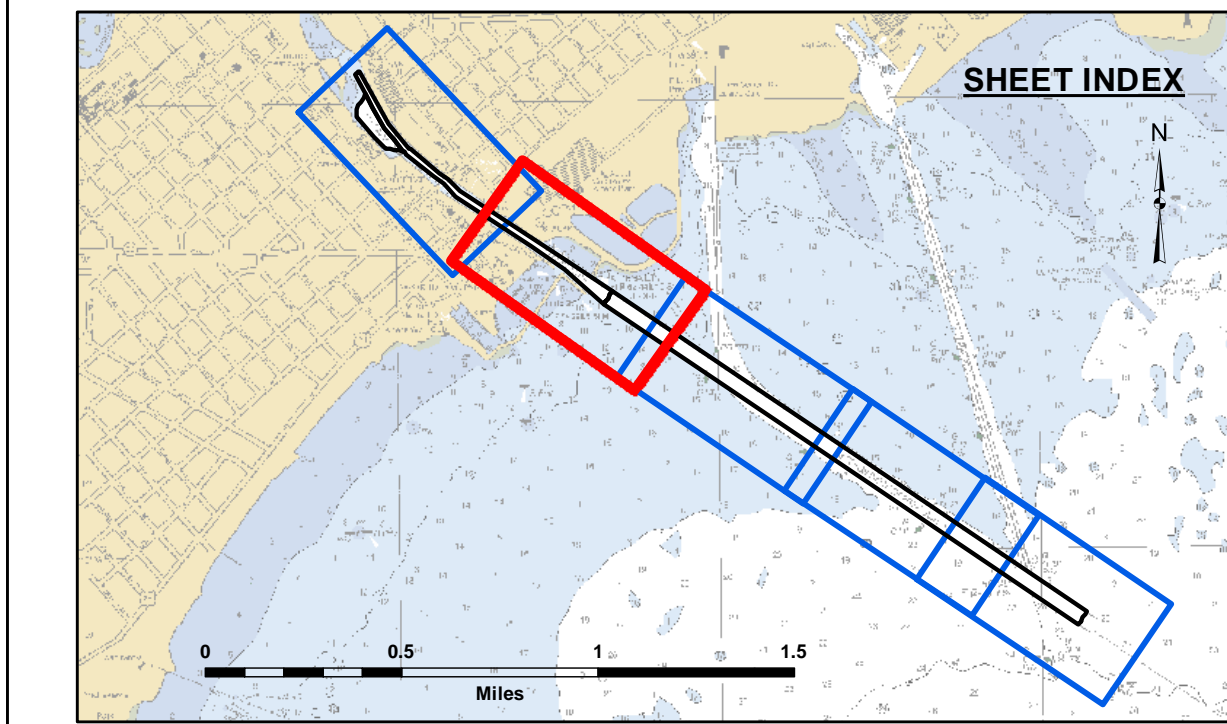
RECOMMENDATION: The United States Government does not make any recommendation or warranty, expressed or implied, concerning the accuracy, completeness, or reliability of the data for any purpose other than that for which they were provided. The user is responsible for the results and accuracy of the data for other than its intended purpose.

APPROVAL: These data belong to the Government. Therefore, the recipient may not transfer these data to others without also transferring this Disclaimer.

U.S. ARMY CORPS OF ENGINEERS DETROIT DISTRICT		
Submitted:	Surveyed By:	
Recommended:	Plotted By:	
Approved:	Checked By:	

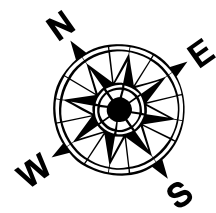
Alpena Harbor, MI
Alpena Harbor
AP_01_ALP_20200924_CS
24 September 2020

Sheet
Reference
Number
1 of 5



- LEGEND**
- Cable Submarine
 - Cable Overhead
 - Channel Limits
 - Beacon, General
 - Contour Lines

- SOUNDING LEGEND**
- LESS THAN PROJECT DEPTH
 - PROJECT DEPTH
 - PROJECT DEPTH +1'
 - PROJECT DEPTH +2'
 - PROJECT DEPTH +3'
 - PROJECT DEPTH +4'
 - PROJECT DEPTH +5'



1 inch = 100 feet



NOTES: THE INFORMATION DEPICTED ON THIS MAP REPRESENTS THE RESULTS OF THE SURVEYS MADE ON THE DATES INDICATED AND CAN ONLY BE CONSIDERED AS INDICATING THE GENERAL CONDITIONS EXISTING AT THAT TIME.

ALL DEPTHS AND PROJECT DEPTHS ARE REFERRED TO LOW WATER DATUM ELEVATION 577.5 FT. ABOVE MEAN WATER LEVEL, I.G.L.D. 1985.

GRIDS SHOWN ARE BASED ON THE NATIONAL GEODETIC SURVEY PROJECTION TABLES, STATE OF MICHIGAN, CENTRAL ZONE (2112), LAMBERT PROJECTION, 1983 NORTH AMERICAN DATUM, US SURVEY FOOT.

PROJECT DEPTHS = 21.0', 18.5', AND TURNING BASIN 15.0' (AS NOTED)

POSITION SYSTEM APPLANIX POS MV4 W/VRS-RTK OR MARINESTAR G2+
SONIC SOUNDER ODOM CV-300
TRANSDUCER 200 KHZ WITH 4.0 DEGREE BEAM ANGLE

WATER LEVEL ELEVATIONS (GAGE) OBTAINED DURING THE SURVEY WERE FROM THE NOAA GAGE LOCATED IN ALEPNA.

2010 AERIAL PHOTOGRAPHY DATA SOURCE: USGS



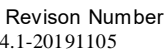
DISCLAIMER: The data represented by the results of data collection is provided for a specific purpose and is not intended for any other purpose. The user is responsible for the results of any application of the data for other than its intended purpose.

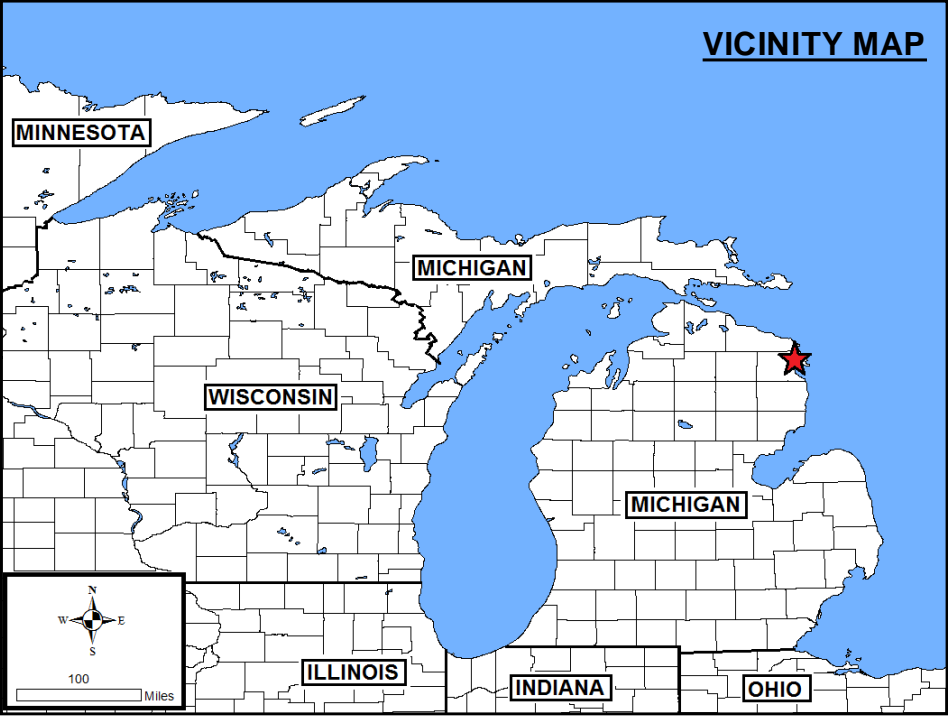
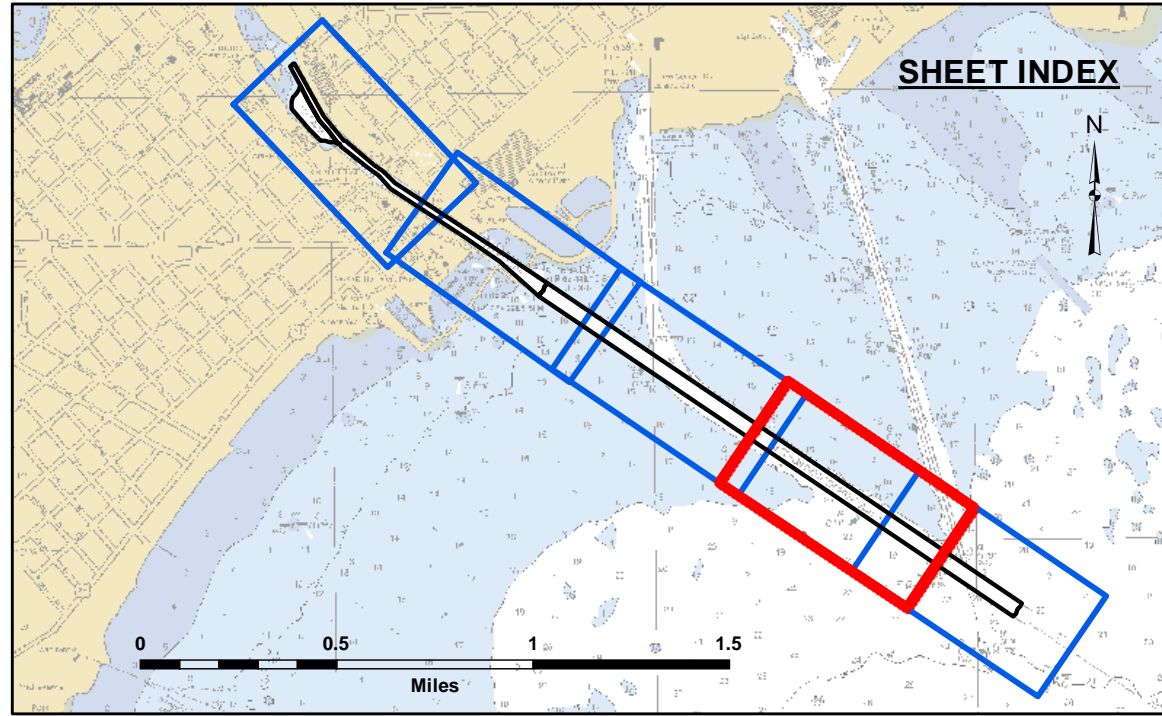
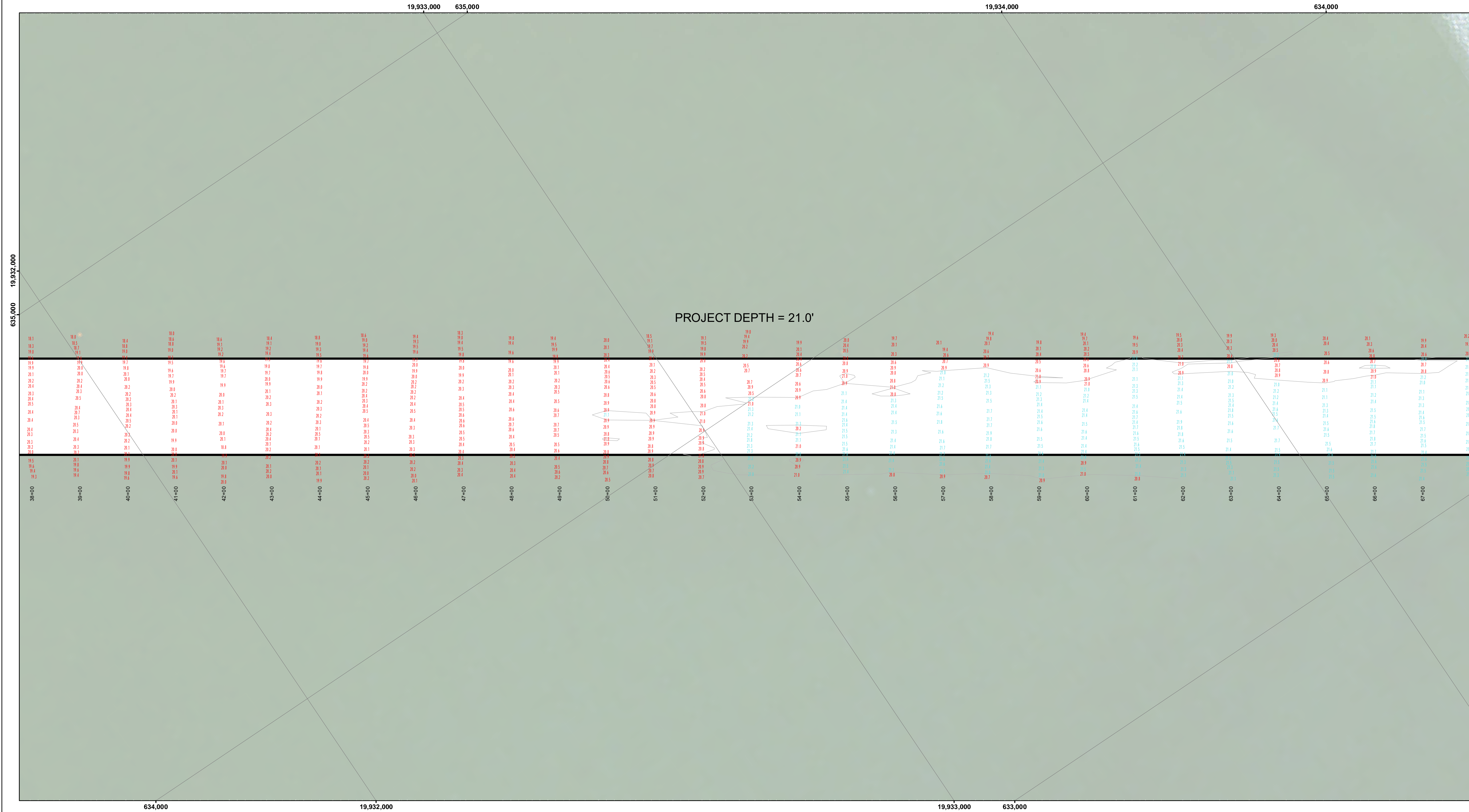
DISCLAIMER: The United States Government furnishes these data and the recipient accepts and uses them with the express understanding that the data are not to be used for any purpose other than that for which they were provided. The user is responsible for the results of any application of the data for other than its intended purpose.

U.S. ARMY CORPS OF ENGINEERS DETROIT DISTRICT	
Submitted:	Surveyed By:
Recommended:	Plotted By:
Approved:	Checked By:

Alpena Harbor, MI
Alpena Harbor
AP_01_ALP_20200924_CS
24 September 2020

Sheet
Reference
Number
2 of 5





LEGEND

- Cable Submarine
- Cable Overhead
- Channel Limits
- Beacon, General
- Contour Lines

SOUNDING LEGEND

- LESS THAN PROJECT DEPTH
- PROJECT DEPTH
- PROJECT DEPTH +1'
- PROJECT DEPTH +2'
- PROJECT DEPTH +3'
- PROJECT DEPTH +4'
- PROJECT DEPTH +5'

1 inch = 100 feet

Feet

0 200 400 600

NOTES: THE INFORMATION DEPICTED ON THIS MAP REPRESENTS THE RESULTS OF THE SURVEYS MADE ON THE DATES INDICATED AND CAN ONLY BE CONSIDERED AS INDICATING THE GENERAL CONDITIONS EXISTING AT THAT TIME.

ALL DEPTHS AND PROJECT DEPTHS ARE REFERRED TO LOW WATER DATUM ELEVATION 577.5 FT. ABOVE MEAN WATER LEVEL, 1 G.L.D. 1985.

GRIDS SHOWN ARE BASED ON THE NATIONAL GEODETIC SURVEY PROJECTION TABLES, STATE OF MICHIGAN, CENTRAL ZONE (2112), LAMBERT PROJECTION, 1983 NORTH AMERICAN DATUM, US SURVEY FOOT.

PROJECT DEPTHS = 21.0', 18.5', AND TURNING BASIN 15.0' (AS NOTED)

POSITION SYSTEM APPLANIX POS MV4 W/VRS-RTK OR MARINESTAR G2+
SONIC SOUNDER ODOM CV-300
TRANSDUCER 200 KHZ WITH 4.0 DEGREE BEAM ANGLE

WATER LEVEL ELEVATIONS (GAGE) OBTAINED DURING THE SURVEY WERE FROM THE NOAA GAGE LOCATED IN ALEPNA.

2010 AERIAL PHOTOGRAPHY DATA SOURCE: USGS


US Army Corps of Engineers
District: CELRE

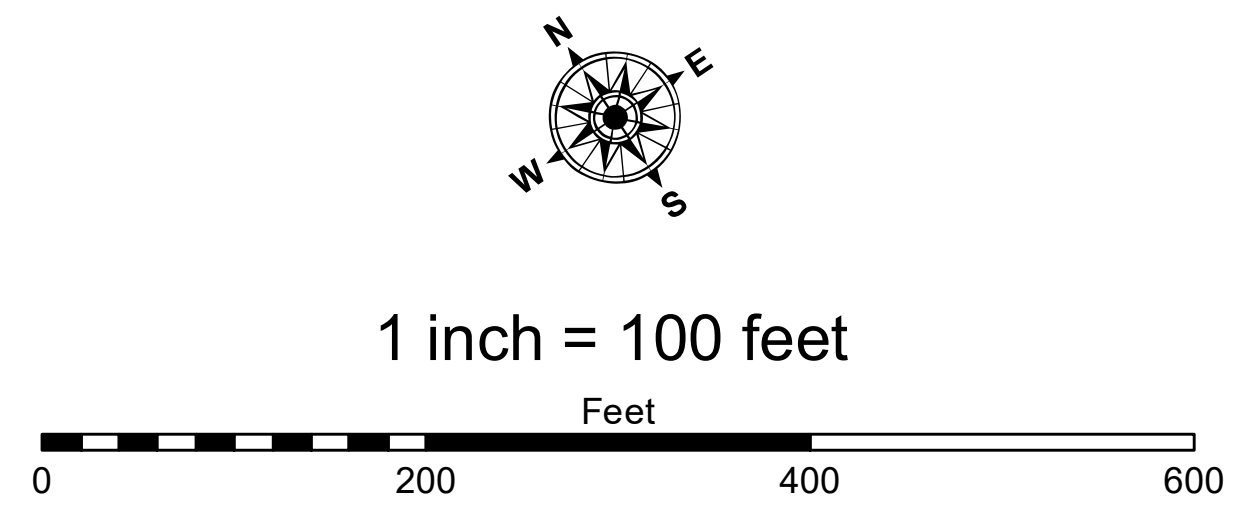
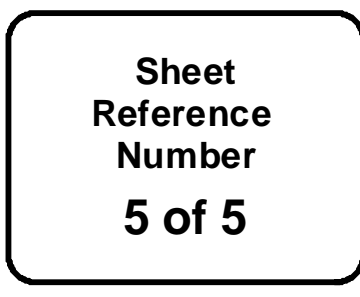
The data on this map represents the results of data collection and processing for a specific US Army Corps of Engineers activity and indicates the general existing conditions. It is not intended to be used for any other purpose, accuracy, or specifications. The user is responsible for the results of any of the application of the data for other than its intended purpose.

Accession: The United States Government furnishes these data and the recipient accepts and uses them with the express understanding that the data are not to be used for any other purpose, expressed, or implied concerning the accuracy, completeness, readability, utility, or suitability for any particular purpose of the recipient. The data are not to be used for any other purpose, expressed, or implied concerning the accuracy, completeness, readability, utility, or suitability for any particular purpose of the recipient. These data belong to the Government. The recipient may not transfer these data to others without also transferring this Disclaimer.

U.S. ARMY CORPS OF ENGINEERS DETROIT DISTRICT	
Submitted By: _____	Surveyed By: _____
Recommended By: Chief, Survey Section	Plotted By: _____
Approved By: _____	Checked By: _____

Alpena Harbor, MI
Alpena Harbor
AP_01_ALP_20200924_CS
24 September 2020

Sheet Reference Number
4 of 5



NOTES: THE INFORMATION DEPICTED ON THIS MAP REPRESENTS THE RESULTS OF THE SURVEYS MADE ON THE DATES INDICATED AND CAN ONLY BE CONSIDERED AS INDICATING THE GENERAL CONDITIONS EXISTING AT THAT TIME.

ALL DEPTHS AND PROJECT DEPTHS ARE REFERRED TO LOW WATER DATUM ELEVATION 577.5 FT. ABOVE MEAN WATER LEVEL, I.G.L.D. 1985.

GRIDS SHOWN ARE BASED ON THE NATIONAL GEODETIC SURVEY PROJECTION TABLES, STATE OF MICHIGAN, CENTRAL ZONE (2112), LAMBERT PROJECTION, 1983 NORTH AMERICAN DATUM, US SURVEY FOOT.

PROJECT DEPTHS = 21.0', 18.5', AND TURNING BASIN 15.0' (AS NOTED)

POSITION SYSTEM	APPLANIX POS MV4 WIVRS-RTK OR MARINESTAR G2+
SONIC SOUNDER	ODOM CV-300
TRANSDUCER	200 KHZ WITH 4.0 DEGREE BEAM ANGLE

WATER LEVEL ELEVATIONS (GAGE) OBTAINED DURING THE SURVEY WERE FROM THE NOAA GAGE LOCATED IN ALEPNA.

2010 AERIAL PHOTOGRAPHY DATA SOURCE: USGS