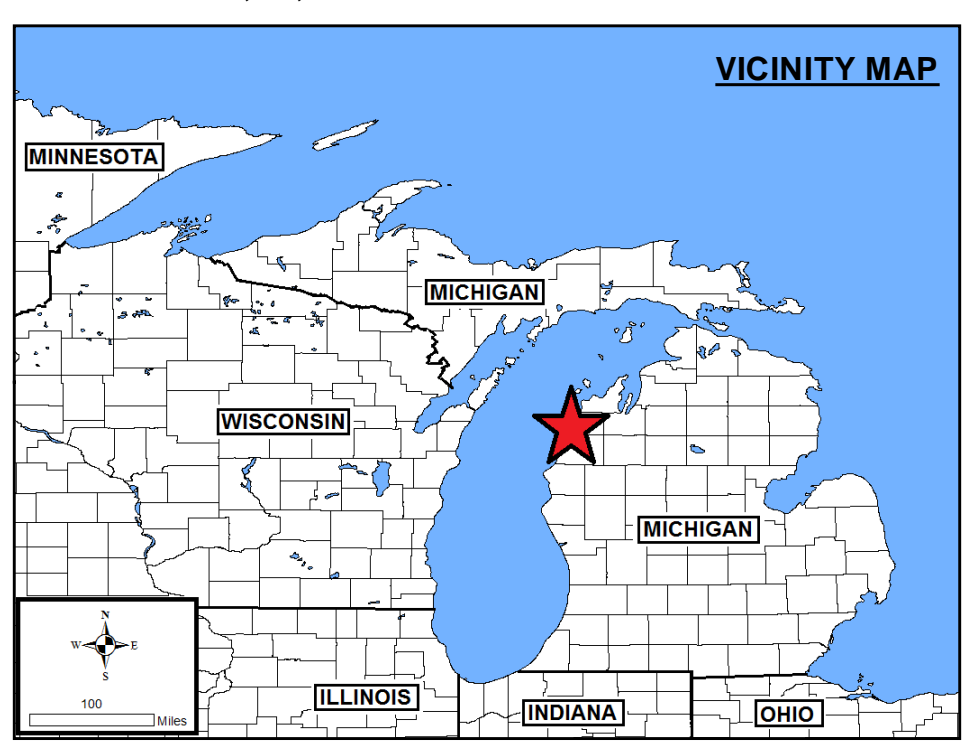
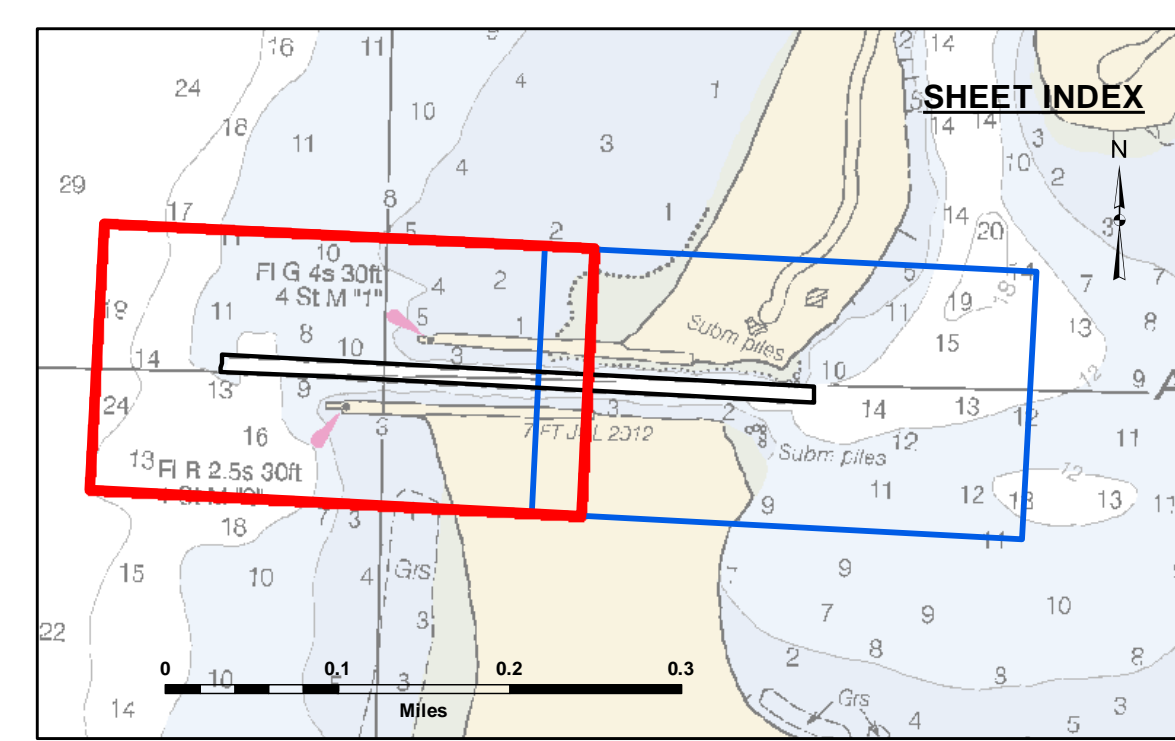




431,000

431,000

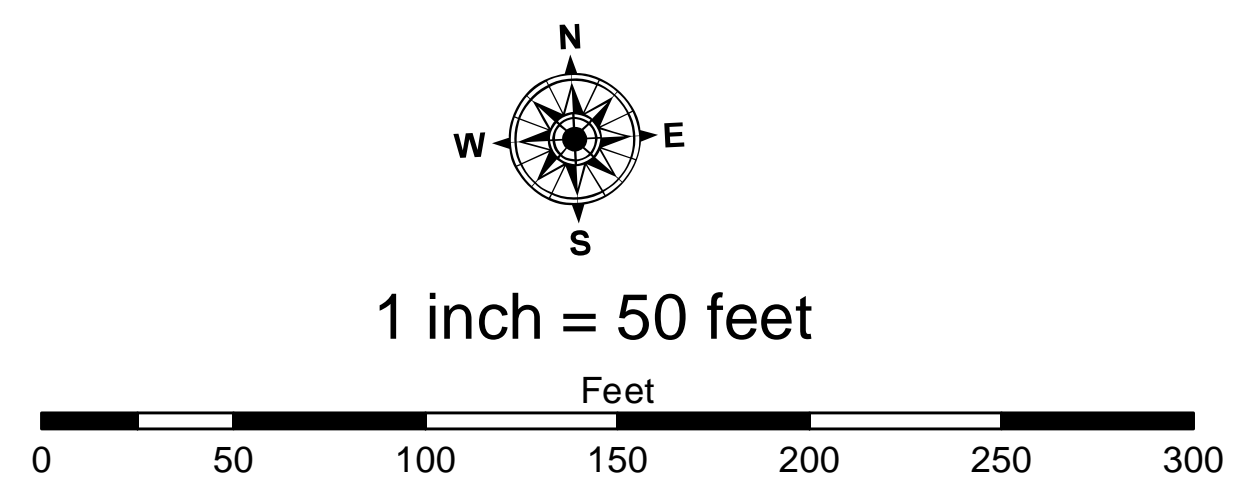


LEGEND

- Cable Submarine
- Cable Overhead
- ▭ Channel Limits
- ⊥ Beacon, General
- Contour Lines

SOUNDING LEGEND

- LESS THAN PROJECT DEPTH
- PROJECT DEPTH
- PROJECT DEPTH +1'
- PROJECT DEPTH +2'
- PROJECT DEPTH +3'
- PROJECT DEPTH +4'
- PROJECT DEPTH +5'



NOTES:

1. THE SOUNDINGS INDICATED HEREON ARE GENERALIZED DEPTHS AND ARE NOT REPRESENTATIVE OF THE FULL DATASET. THE SOUNDINGS REPRESENT THE MINIMUM DEPTH FOUND WITHIN THE 10 FOOT BY 10 FOOT AREA CENTERED ON THE TEXT. THIS MAP SHOULD NOT BE USED FOR CHANNEL CLEARANCE OR VOLUME COMPUTATIONS. MINIMUM DEPTH DATA IS PRODUCED FOR STRIKE/SOAL REMOVAL OPERATIONS AND NOTICES TO NAVIGATION INTERESTS.
2. GRID SYSTEM BASED ON LAMBERT PROJECTION, MICHIGAN STATE PLANE COORDINATE SYSTEM, CENTRAL ZONE (2113) 1983 NORTH AMERICAN DATUM, U.S. FOOT. WATER LEVEL READINGS ARE FROM A GAGE MARK LOCATED ON A STEEL PILING IN ARCADIA HARBOR, MI.
3. THE INFORMATION DEPICTED ON THIS MAP REPRESENTS THE RESULTS OF SURVEYS MADE ON DATES INDICATED AND CAN ONLY BE CONSIDERED AS INDICATING THE GENERAL CONDITIONS PRESENT AT THE TIME.
4. POSITIONING METHOD: MARINESTAR G2+ EQUIPMENT: R2SONIC 2024 MULTIBEAM ECHOSOUNDER SOFTWARE: HYPACK 2022 VESSEL: LAUNCH 3058
5. UNLESS OTHERWISE NOTED PROJECT DEPTH IS 9 FEET BELOW LWD

2010 AERIAL PHOTOGRAPHY DATA SOURCE: USGS

U.S. ARMY CORPS OF ENGINEERS
DETROIT DISTRICT

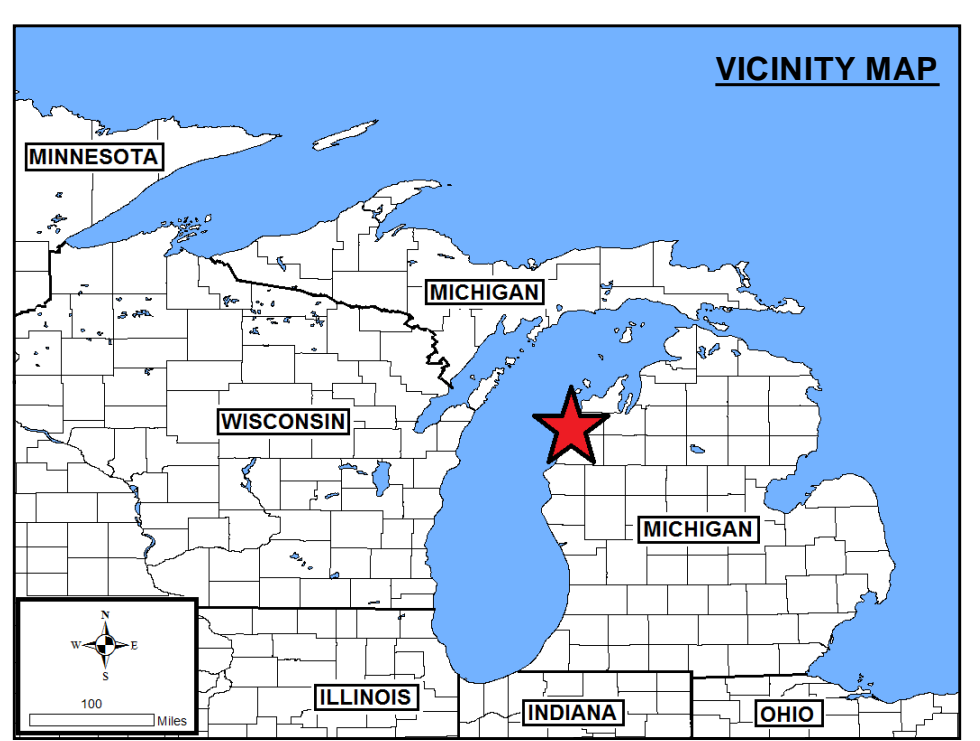
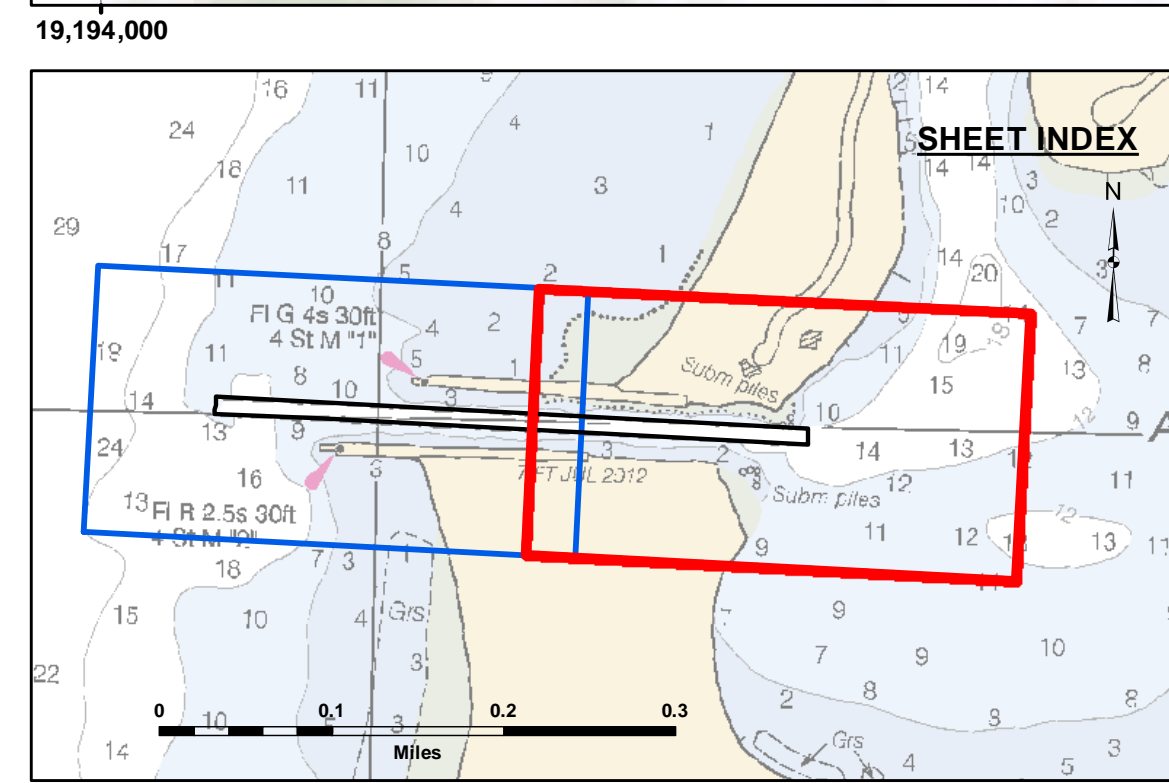
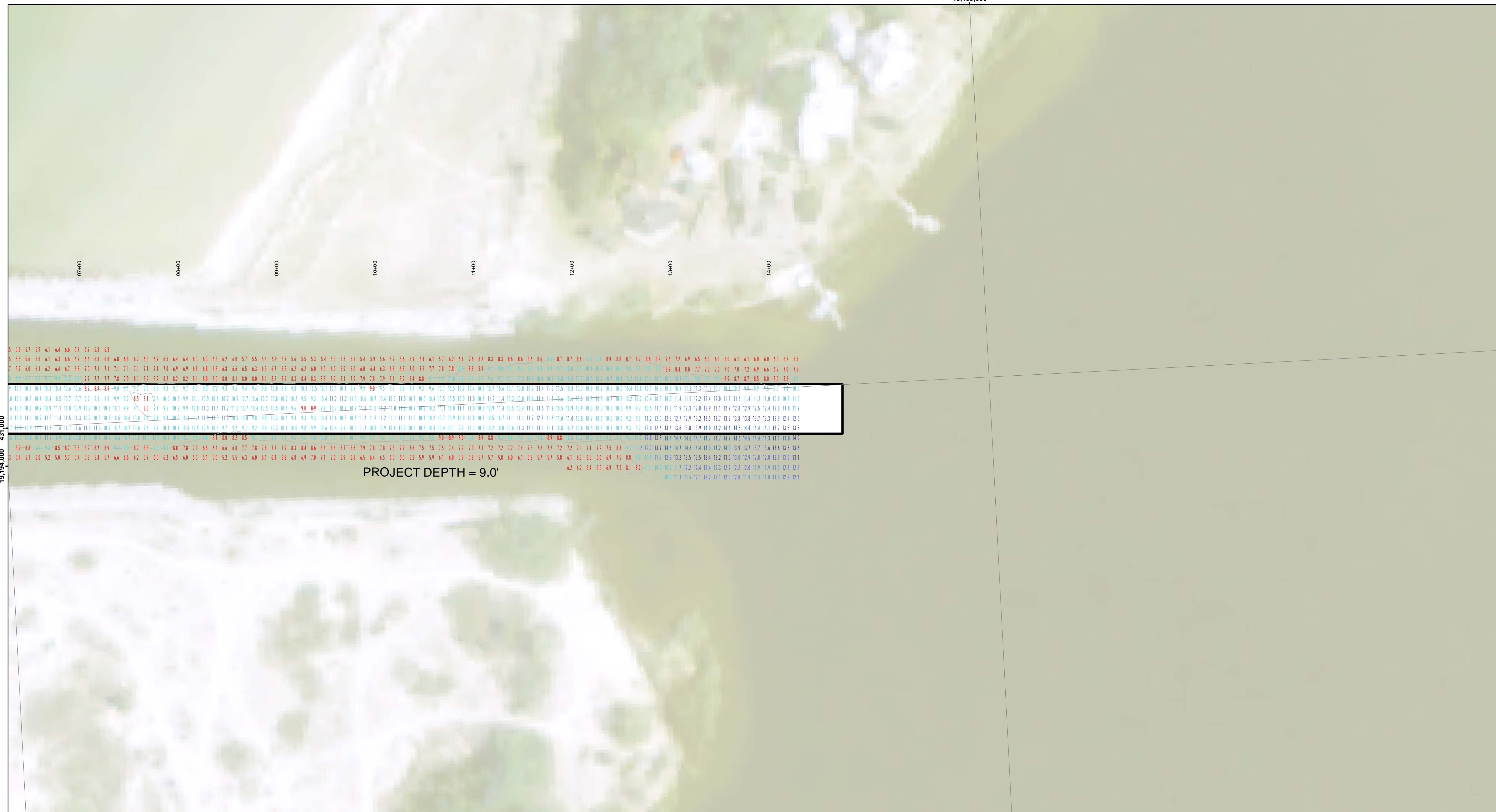
Submitted By:	Surveyed By:
Recommended By: Chief, Survey Station	Plotted By:
Approved By: Chief, Technical Services	Checked By:

Arcadia Harbor, MI
Arcadia Harbor
AC_01_DIA_20230706_AD
06 July 2023

Sheet Reference Number
1 of 2

DISCLAIMER: The United States Government furnishes these data and the recipient accepts and uses them with the express understanding that the data are not to be used for any purpose other than that for which they were provided. The United States Government makes no warranty, expressed or implied, concerning the accuracy, completeness, reliability, or availability of any data furnished hereunder. The United States Government shall not be liable for any damages, including but not limited to, direct, indirect, or consequential damages, arising out of the use of the data. The recipient shall indemnify and hold the United States Government harmless from and against all claims, damages, and expenses, including reasonable attorneys' fees, which may be asserted against or incurred by the United States Government as a result of the use of the data. The recipient shall also indemnify and hold the United States Government harmless from and against all claims, damages, and expenses, including reasonable attorneys' fees, which may be asserted against or incurred by the recipient as a result of the use of the data.



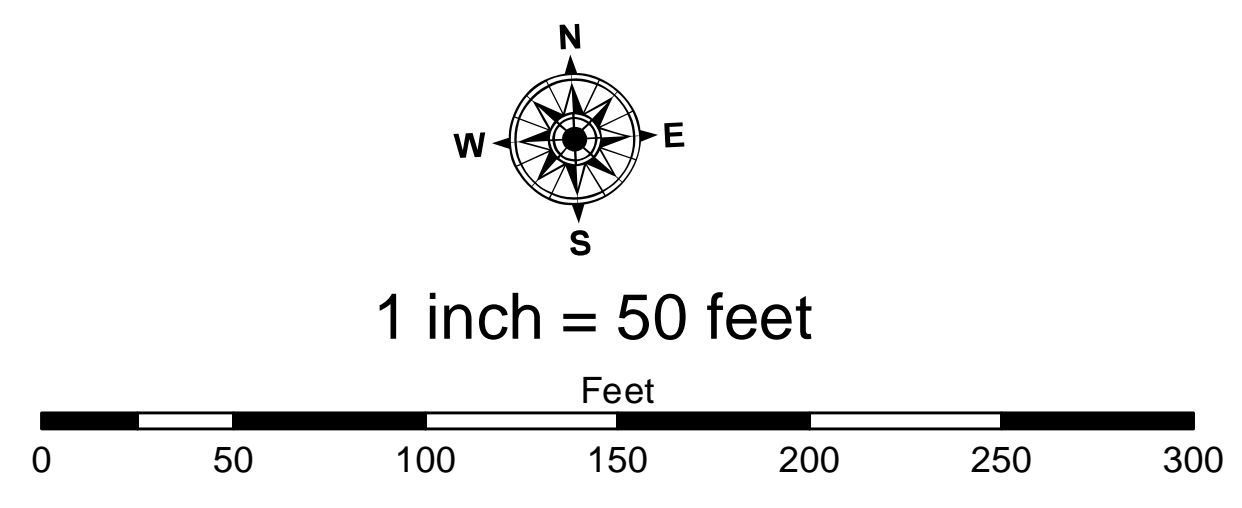


LEGEND

- Cable Submarine
- Cable Overhead
- ▭ Channel Limits
- ⊥ Beacon, General
- Contour Lines

SOUNDING LEGEND

- LESS THAN PROJECT DEPTH
- PROJECT DEPTH
- PROJECT DEPTH +1'
- PROJECT DEPTH +2'
- PROJECT DEPTH +3'
- PROJECT DEPTH +4'
- PROJECT DEPTH +5'



NOTES:

1. THE SOUNDINGS INDICATED HEREON ARE GENERALIZED DEPTHS AND ARE NOT REPRESENTATIVE OF THE FULL DATASET. THE SOUNDINGS REPRESENT THE MINIMUM DEPTH FOUND WITHIN THE 10 FOOT BY 10 FOOT AREA CENTERED ON THE TEXT. THIS MAP SHOULD NOT BE USED FOR CHANNEL CLEARANCE OR VOLUME COMPUTATIONS. MINIMUM DEPTH DATA IS PRODUCED FOR STRIKE/SHOAL REMOVAL OPERATIONS AND NOTICES TO NAVIGATION INTERESTS.
2. GRID SYSTEM BASED ON LAMBERT PROJECTION, MICHIGAN STATE PLANE COORDINATE SYSTEM, CENTRAL ZONE (2113) 1983 NORTH AMERICAN DATUM, U.S. FOOT. WATER LEVEL READINGS ARE FROM A GAGE MARK LOCATED ON A STEEL PILING IN ARCADIA HARBOR, MI.
3. THE INFORMATION DEPICTED ON THIS MAP REPRESENTS THE RESULTS OF SURVEYS MADE ON DATES INDICATED AND CAN ONLY BE CONSIDERED AS INDICATING THE GENERAL CONDITIONS PRESENT AT THE TIME.
4. POSITIONING METHOD: MARINESTAR G2+
EQUIPMENT: R2SONIC 2024 MULTIBEAM ECHOSOUNDER
SOFTWARE: HYPACK 2022
VESSEL: LAUNCH 3058
5. UNLESS OTHERWISE NOTED PROJECT DEPTH IS 9 FEET BELOW LWD

2010 AERIAL PHOTOGRAPHY DATA SOURCE: USGS



DISCLAIMER: The data represents the results of data collection/processing for a specific US Army Corps of Engineers activity and indicates the general existing conditions. It is not intended to be used for any purpose other than that for which it was collected. The user is responsible for the accuracy, completeness, and reliability of the data for other than its intended purpose. The user is responsible for the accuracy, completeness, and reliability of the data for other than its intended purpose. These data belong to the Government. Therefore, the recipient may not transfer, disseminate, or otherwise use these data without also transferring the Disclaimer.

U.S. ARMY CORPS OF ENGINEERS
DETROIT DISTRICT

Submitted By:	Surveyed By:
Recommended By: Chief, Survey Station	Plotted By:
Approved:	Checked By: Chief, Technical Services

Arcadia Harbor, MI
Arcadia Harbor
AC_01_DIA_20230706_AD
06 July 2023

Sheet Reference Number
2 of 2